

BIOPHILATELY

OFFICIAL JOURNAL OF THE BIOLOGY UNIT OF ATA
 JUNE 2025 VOLUME 74 NUMBER 2

Chamois: Part 1



IN THIS ISSUE

	NEW ISSUES	ARTICLES:
From the Editor's Desk.....	68	Botany – Christopher E. Dahle.....86
President's Message.....	69	Fungi – Paul A. Mistretta.....93
Secretary's Corner.....	69	Mammalia – Michael Prince.....99
News of Note.....	70	Ornithology – Glenn G. Mertz.....102
Endangered Species.....	90	Ichthyology – Harvey Robbins.....124
Goldau Nature Reserve.....	101	Invertebrates – Peter J. Voice.....127
Ornithology Commentary.....	113	Entomology – D. Wright & J. Reis....131
Turtle & Tortoise Meters.....	114	Paleontology – Michael Kogan.....135
Ballot.....	139	
		Chamois on Stamps Part 1 by Peter Voice.....71
		Postmarks of the FDCs of the Underwater Flora and Fauna Issues– Europa Stamps Edition: Part 4 by Peter Voice.....78
		Caveat Emptor (Part 17): 2014-2015 by Paul Mistretta.....94
		New Plants in the Philatelic Herbarium – Christopher Dahle.....91
		New Birds in the Philatelic Aviary – Charles E Braun.....115

BIOPHILATELY**Editor**

Christopher E. Dahle
1650 Koehler Dr NW #240, Cedar Rapids, IA 52405
chris-dahle@biophilately.org
Associate Editors

Christopher E. Dahle *Botany*

Dr. Paul A. Mistretta *Fungi*
4148 Commodore Dr., Atlanta, GA 30341
paulmistretta70@gmail.com

Michael J. Prince *Mammalia*
7 Station Rd, Whitchurch, Hampshire RG28 7EP UK
Michael.Prince@bushinternet.com

Glenn G. Mertz *Ornithology*
625 N. Lafayette St, Allentown, PA 18104
gmertz43@gmail.com

Charles E. Braun *New Birds*
4202 Exum Drive, West Columbia, SC 29169
charlesebraun@gmail.com

Dick Roman *Herpetology*
Dick.Roman@SbcGlobal.Net

Harvey Robbins *Ichthyology*
ihrobbins@sympatico.ca

Peter Voice *Invertebrate Zoology*
petervoi@yahoo.com

Donald P. Wright, Jr. *Entomology*
8301 Old Sauk Rd, Apt 175, Middleton, WI 53562
don.aa2f@verizon.net

Michael Kogan *Paleontology*
Munich, Germany
admin@paleophilatelie.eu

Koenraad Bracke *Arachnology*
kobra22@telenet.be

BIOLOGY UNIT OF ATA

Laurie J. Ryan **President**
4134 Wenbrook Dr, Sharonville, OH 45241
doxiemom7@gmail.com

Glenn G. Mertz **Vice-President**
625 N. Lafayette St., Allentown, PA 18104
gmertz43@gmail.com

Christopher E. Dahle **Secretary/Treasurer**
1650 Koehler Dr NW #240, Cedar Rapids, IA 52405
chris-dahle@biophilately.org

Directors

John Pereira (Massachusetts)
Michael Kogan (Germany)
Donald P. Wright, Jr. (Wisconsin)
Dick Roman (Missouri)

Publisher**Librarian**

Mark Reineke
925 Boychuk Drive, Saskatoon, SK S7H 4L6 Canada
mikadoate@sasktel.net

Website

www.biophilately.org

The Biology Unit, founded in 1951, is a study unit of the American Topical Association dedicated to the international cooperative study of biological postage stamps and related material.

Electronic versions of back copies of Biophilately are available on our website, or from the Librarian on request. Please contact the individual associate editors if you have queries about the content of their columns.

Send membership enquiries and change of address notices to the secretary, Chris Dahle, (319) 364-4999, address above. See the following page for dues rates.

Copyright 2025. All rights reserved. The views expressed in the articles and other contributions are those of the authors and do not necessarily reflect the views of the officers or other members of the Biology Unit.

The purpose of this journal is to provide members with informative articles dealing with biological topics and to publish listings covering the new **zoological** and **botanical** issues of the world, identified and classified to the best of our ability.

Please send letters, comments on the journal, articles, or new material to the editor (data above). The editor will handle requests for issues from the current year. Contact the librarian (address above) for copies of all other issues.

The term Scott and Scott Catalogue numbers are trademarks of Amos Media., dba Scott Publishing Company.

PLEASE NOTE: Material for the next issue should be in the hands of the editor by 15 August 2025.



FROM THE EDITOR'S DESK

Chris Dahle, BU 1269

There is still time to pre-register for the Great American Stamp Show in Schaumburg, Illinois in August. Pre-registering gets you into the show with less hassle. They'll have your name tag printed for you and ready to go. As usual the Biology Unit will hold its annual meeting in conjunction with the National Topical Stamp Show, which is collaborating with the APS and the AFDCS to put on the show.

Peter Voice has been writing more articles for us. This time part 1 of his treatment of the Chamois is featured on our cover. His final article on the 2024 Europa Underwater Flora & Fauna appears in this issue. Paul Mistretta's coverage of illegal Mushroom stamps continues. The dates he covers are catching up to the present.

I must apologize to the collectors of fishes and to Harvey Robbins. He sent me a column for the March issue, and I did not include it. I'm not sure what happened, because I do remember formatting it. For some reason it was deleted.

In April I was at the Philatelic Show in Boxborough, Massachusetts over the Easter weekend. It turns out that is not such a good time to schedule a stamp show. Many of the dealers did not return on Sunday. I left before the show closed to catch my flight, but I got the impression that the show would close earlier than scheduled on Sunday afternoon.

I know that the outcome of an election is a foregone conclusion when there is only a single candidate for each position. But by voting you are at least affirming the leadership of our organization. If anyone else would like to volunteer for a leadership position in the Unit, please let a member of the Board know.

In the Secretary's Corner there is a list of members who are in arrears for their dues. Please have a look, and if your name is there, please send payment. Payment can be made using a check drawn on a U.S. bank, or using PayPal by sending to dues@biophilately.org.

Chris

DUES RATES (US\$)

On-line membership \$20

ADVERTISING RATES

Full page insertion \$25

Half page insertion \$15

Quarter page insertion \$10

Please see the Biology Unit web site (www.biophilately.org) for membership applications. Several payment options are available. Send applications and payments payable to the Biology Unit of ATA to Chris Dahle, 1650 Koehler Dr NW #240, Cedar Rapids, IA 52405

PRESIDENT'S MESSAGE



The garden is in bloom at last. It is uplifting to see the bright colors through the gloomy rain. The peonies were gorgeous until the heavy rains beat them down. Luckily the daylilies around them will bloom shortly. I love tall bearded iris. They were going full force earlier last month, but are now finished blooming. I miss looking out and seeing their beauty. The hummingbirds are back and such a joy to watch. Besides the feeders I have out, they love the penstemon and clematis. I look forward to the passion flowers blooming for them later on. I think this is the first year that the cicadas have not totally freaked me out. I still freak a little when they land in my hair or hit me in the face. Cicadas are actually very intriguing animals. And they are everywhere these days. My neighbor's dog thinks they are delicious, eating every one she can get – until one buzzed in her mouth. Now she is more cautious.

My axolotl, Smaug, is so big now. I am in the process of setting up a larger aquarium for him. It will have larger stones and caves for him to explore and hide in. This will give him something new to do as well. In the old tank I will be setting it up for a species of freshwater gobies, *Rhinogobius Zhoui*. They are one of five goby species new to the store. The species is native to Taiwan, and found in high flowing streams. This makes five new aquariums I have set up since starting to work at the store!

The freshwater stingrays are still at the store. I guess they are now our pets. They let me hand feed them their chunks of shrimp these days. The customers get a kick out of watching them eat. The saltwater side is still a work in progress. There are more fish now, as the owner found a better supplier. The snowflake eel is so cute. He comes out of his cave, stretches his head up to the surface and waits to be fed. I am working up to hand feeding him as well. I really enjoy my job; I play with fish and get paid for it!

A lot of new stamps are being issued this year. I have found two new hedgehog stamps so far. One from Great Britain and one from Alderney. The Alderney set depicts the blond hedgehog, which is found only on this island. They are not albino, but a color mutation of the European hedgehog.

We are gearing up for the Great American Stamp Show in Schaumburg, IL. As before, we will have our general meeting to share ideas and criticisms. If there is something you want to discuss, but are unable to attend, please contact Chris or me with your ideas. We will present it at the meeting on Saturday, August 16th at 10am for you. Have a great summer.

Laurie

SECRETARY'S CORNER

Welcome new members:

Rob Oliver #1924 of Leiden, Netherlands, collects all biological categories.

Alan Godfrey #1925 of Alcester, Warwickshire, UK

The following members have not paid dues since 2023, or prior to that. Please remit your \$20 dues to continue your membership. See the December or March issues for payment options.

Bracke	Dinnel	Gerner	Jones	O'Neill	Ryan	Todd
Bylsma	Drago	Gilman,	Lavery	Parker	Schindwolf	Van Laere
Chapman	Eichler	Grimstad	Mirando	Reif	Shively	Vaughn
Das	Franco	Herbert	Mistretta	Reis	Tan	Wongpakdee Workman.

News of Note**Annual Meeting of the Biology Unit**

The Annual Meeting of the Biology Unit will be on August 16, 10:00a.m. in the Epiphany Room at the Great American Stamp Show.



The Great American Stamp Show 2025

WHEN:

August 14-17, 2025

Thurs. - Sat. 10 a.m. - 6 p.m. • Sun. 10 a.m. - 4 p.m.

LOCATION:Renaissance Schaumburg Convention Center
1551 North Thoreau Dr., Schaumburg, IL 60173**COST:**

Admission is FREE!

Pre-registration is recommended to help you save time and avoid on-site registration lines.

[Online Pre-registration](#) will close July 31.Co-hosted by the American Philatelic Society, the American Topical Association
and the American First Day Cover Society

Chamois on stamps – Part 1

**Peter Voice, Faculty Teaching Specialist,
Department of Geological and Environmental Sciences, Western Michigan University,
BU1891**

Introduction

On September 27, 2024, Slovenia issued a lovely set of 3 stamps and 1 miniature sheet with 1 stamp of an animal found in the Steiner Alps, a portion of the Alps in Austria, Slovenia, and Croatia. I was struck by the elegance of both the animals and the stamps and decided to take a philatelic side journey to explore these animals in more detail and wanted to share this journey with all of you. Part 1 will briefly discuss the biology, geographic range and habit, and taxonomy of Chamois. In Part 2 (in a future issue of Biophilately), we will look at the Slovenia 2024 issue as well as the other stamps that depict Chamois.

What are Chamois?

Linnaeus defined the species *Capra rupicapra* in 1758 in the 10th edition of the *Systema Naturae*. Garsault, a French botanist and zoologist later moved the chamois into a new genus, *Rupicapra* in 1764. This species now encompasses the subspecies of the northern chamois (Corlatti et al. 2022a).

Northern chamois are small – adult males are approximately 30 inches tall and 50 inches long, females are slightly smaller. In terms of mass, males range up to 132 pounds, while females range up to 100 pounds – though the few studies that track mass through the year show that males tend to put on weight prior to the rut (Garel et al. 2009) likely due to male-male competition for mates. After the rut, males tend to lose significant weight and are closer in mass to females. Both males and females exhibit ebony horns – in both cases, sharply curving towards the back of the animal. Their horns are similar in size, with males having slightly longer horns. These animals start growing their horns at 2 months and the horns are continuously grown through the life of the animal – with periodic pauses of growth during the winter months (November to March) which can be used to estimate the age of the animal based on the growth annuli within the horns – by counting horn rings.

Northern chamois juveniles have milk teeth which are replaced with a permanent set of teeth at approximately 2 years old (Pérez-Barbería and Mutuberría, 1996). Mammals are often characterized by their tooth formulas – which list the number of incisors, canines, premolars, and molars on one half of each jaw. Corlatti et al. (2022a) lists the tooth formula for the upper jaw as 0 0 3 3 and the lower jaw as 3 1 3 3. Their upper jaws do not have incisors or canines, while the incisors are prominent at the front of the lower jaw. In the cheeks are the broad, large premolars and molars.

During the year, the color of the fur changes – typically, they are reddish brown in summer. The winter coat develops in August or September leaving the animal's fur dark brown to black by November. These animals start molting in March and exhibit their summer coat by June. Northern chamois are characterized by white patches of fur on the sides of their head with broad black stripes stretching from the eye to the muzzle. The winter coat is thick with longer guard hair and dense down hair (Corlatti et al. 2022a).

Corlatti et al. (2022a) describe their adaptations for life at high altitude, low oxygen environments. Northern chamois have large lungs and hearts. Amazingly, they have an incredible number of red blood cells – Corlatti et al. cite 10 million cells per milliliter with a variant of hemoglobin that they judge as more efficient at oxygen-binding than similar compounds in ruminants living at lower altitudes. Their stomachs are adapted for seasonal changes in diet – with these animals being browsers during the spring and summer months and switching to grazing during the winter months.

Northern chamois have an approximately 6-month gestation period – usually giving birth to their kids in

May to late June. Kids grow rapidly over the first 2 years, starting with a mass of around 5 to 6 pounds. Adult females continue growing to approximately 3.5 years old, while males continue to grow until 5.5 years old. Females start reproducing at approximately 3 years old and breeding is most successful in females aged 4 to 7 years. Corlatti et al. (2022a) notes that males are more likely to successfully reproduce in non-hunted populations at older ages (usually 6 years old or older), while younger males are successful in hunted populations where older males may be culled during hunting. Census results suggest that at birth the ratio of males to females is 1:1, while adult populations are slightly biased towards females (1:1.2).

In terms of behavior, northern chamois exhibit seasonal migrations from higher altitudes in the summer (treeline to 3000 m) to lower altitudes in winter. At higher altitudes, they tend to prefer alpine meadows on the southern and eastern facing slopes (where solar insolation reduces the amount of snow). During most of the year, northern chamois focus on “graminoid” plants – grasses and grass-like plants for their diet but add significant conifer material during the winter months.

Depending on the density of resources, females and kids will clump together into groupings up to 100 individuals – though primarily are found as mother-kid pairs and small groups. Kids live with their mothers for the first year. Young males tend to clump into small groups, while older adult males tend to be solitary animals. Mixed groups of males and females do gather in the Fall probably due to the breeding season and may continue into the winter months due to foraging in places with sufficient food.

The southern chamois, *Rupicapra pyrenaica* was defined by Bonaparte in 1845. They are similar in size to the northern chamois though are usually slenderer. They also exhibit seasonal variation in coat color – with a thinner reddish coat with short hair during the summer, and thicker, dark brown coats during the winter.

They have the same tooth formulas (Pérez-Barbería and Mutuberría, 1996) – 0 0 3 3 upper jaw and 3 1 3 3 lower jaw and erupt their permanent teeth near the end of their second year. Kids start growing horns at two months – usually in August of the year. Yearlings exhibit horns shorter than their ears. While adults have longer horns, that are again used to estimate the age by counting annual horn rings. Sexual dimorphism is weak in southern chamois – with again males being heavier during the rut and bearing slightly more curved horns. Their physiology is similar to northern chamois with the same adaptations for higher altitude life. They also have similar reproductive styles to the northern chamois. So how do they differ from northern chamois? – well the primary evidence is from comparison of genetic sequences which separates the southern chamois subspecies from the northern chamois subspecies – in the next section, we will look at the geographic distribution of the subspecies.

Where do chamois live?

Modern chamois are found in mountainous enclaves (Figure 1) across Europe which are then reflected on the stamps issued by various European countries. The populations of this species have become isolated since the last ice age – such that several subspecies have been defined. Massani and Lovari (1988) list 10 subspecies – with three grouped as *Rupicapra pyrenaica* and seven in *Rupicapra rupicapra*. Conservation efforts including bans on hunting most Chamois subspecies and reintroduction of individuals into their subspecies’ former ranges have spurred population growth in most Chamois subspecies as reflected by the more recent, larger population numbers in Table 1.

Table 1: The geographic range of the chamois, *Rupicapra pyrenaica* (Southern chamois) and *Rupicapra rupicapra* (Northern chamois). The population numbers from 1988 are from Masani and Lovari (1988). More recent population numbers are from Wikipedia and other sources. *R. p. ornata* 2024 numbers come from: <https://www.gransassolagapark.it/page.php?id=372>. *R. p. cartusiana* numbers from <https://www.wilddocu.de/chartreuse-chamois-rupicapra-rupicapra-cartusiana/> - though the webpage notes that some of the conservation efforts included introducing Alpine chamois to region which may have caused some hybridization. *R. r. tatica* 2012 statistics are from a circabc report for the European

Commission. *R.r. carpatica* 2006 statistics are from <https://www.wilddocu.de/carpathian-chamois-rupicapra-rupicapra-carpatica/>. The Balkan subspecies data is summarized from Papaioannou and Kati, 2007 who report data from several studies done in the 1990s from different parts of the Balkans. The Caucasian chamois have experienced declines due to hunting since the Masani and Loveri (1988) summary – values reported are from: <https://www.wilddocu.de/caucasian-chamois-rupicapra-rupicapra-caucasica/>. Information about Anatolian chamois is hard to come by; Corlatti et al. (2022a) provide estimates of approximately 600 individuals living in northeastern Turkey and southwestern Georgia.

Subspecies	Number of Individuals	Range
<i>Rupicapra pyrenaica pyrenaica</i>	25,000 (1988), approximately 50,000 (2022)	Pyrenees – France-Spain (Andorra) border region
<i>Rupicapra pyrenaica parva</i>	6000 (1988), 17400 (2007-2008)	Cantabrian Mountains – northwestern Spain
<i>Rupicapra pyrenaica ornata</i>	350 (1988), 600-700 (2024)	Apennines, Italy
<i>Rupicapra rupicapra cartusiana</i>	100 (1988), 2000 (2006)	Chartreuse Massif – western French Alps
<i>Rupicapra rupicapra rupicapra</i>	450,000 (1988)	Alps
<i>Rupicapra rupicapra tatrica</i>	900 (1988), 1300 (2012)	Tatra Mountains (Slovakia and Poland)
<i>Rupicapra rupicapra carpatica</i>	2,500 (1988), 6,800 (2006)	Carpathian Mountains, Romania
<i>Rupicapra rupicapra balcanica</i>	25,000 (1988), 14,550 (1990s)	Mountainous areas of the Balkans (Slovenia, Croatia, Bosnia Herzegovina, Northern Macedonia, Kosovo, Montenegro, Serbia, Albania, and Greece)
<i>Rupicapra rupicapra caucasica</i>	13,000 (1988), 9000 (2019)	Greater Caucasus – Russia, northern Georgia, Azerbaijan
<i>Rupicapra rupicapra asiatica</i>	Status unknown (1988), ~800 (2022)	Anatolia – Turkey and southern Georgia

Who are chamois related to?

Chamois are part of the family Bovidae – a large group that includes cows, goats, sheep, antelopes and a number of other animals (Figure 2). They are ruminants, mammals that use foregut fermentation to assist in digestion of the plants that they eat. Ruminants use the aid of microbes to breakdown the plant matter they eat – this process is done in the foregut, or rumen, the first chamber in their stomachs. They further process their food by regurgitating it and chewing on the cud before swallowing it for a second round of digestion in the hindgut portion of the stomach. This process helps the animals digest tough starches like cellulose. They are also ungulates – hooved mammals. Hooved mammals are classified on the number of toes – bovids are even-toed ungulates, which are classified as artiodactyls. In addition to the bovids, artiodactyls include a variety of modern animals such as pigs, peccaries, deer, hippopotamuses, giraffes, deer, camels and llamas, as well as some extinct groups. The cetaceans (whales, dolphins, and their relatives) also have artiodactyl roots – as early pakicetids and ambulocetids were quadrupedal ancestors of these groups that lived semi-aquatic lives in the rivers and coastal regions of Pakistan during the Eocene some 50 million years ago.



Figure 1: Modern range map for *Rupicapra rupicapra* – green pattern on map of central and southern Europe shows approximate abundance of chamois. The Pyreneean and Apennine chamois do not show up on the map due to their small numbers. Starting in the upper left and moving clockwise, the stamps depicted include Germany 1966 #B413, Poland 1954 #662, Slovakia 1940 #48, Romania 2016 #5839, Bosnia & Herzegovina (Serb administration) 2006 #285, Serbia 2005 #278d, Albania 1962 #639, Andorra (French Administration) 1979 #267, Spain 1971 #1684, and Liechtenstein 1947 #223. Background map is from https://www.ultimateungulate.com/Artiodactyla/Rupicapra_rupicapra.html

There are 137 recognized modern species within the family organized into 45 genera. Even more species and genera are recognized from the fossil record (Bibi, 2007). The bovids are traditionally classified into tribes (Hassanin and Douzery, 1999) which include:

- 1) Bovini – cattle-like bovids
- 2) Boselaphini – nilgai and four-horned antelopes
- 3) Tragelaphini – spiral-horned antelopes
- 4) Cephalophini – duikers
- 5) Hippotragini – horse-like antelopes
- 6) Reduncini – waterbucks
- 7) Alcelaphini – hartebeests
- 8) Antilopini – gazelles
- 9) Neotragini – dwarf antelopes
- 10) Caprini – sheep and goats
- 11) Ovibovini – muskox and takin
- 12) Rupricaprini – chamois

Three additional tribes are recognized but their relationships with other bovids are uncertain – the Aepycerotini (impalas), the Peleini (vaal rheboks), and Saignini (saiga and chiru). Hassanin and Douzery (1999) use gene sequencing of mitochondrial cytochrome b genes from 51 extant bovid species to determine taxonomic relationships between different bovid tribes. Their study suggests that Bovidae can be split into two major groupings – the subfamily Bovinae which includes the cattle, buffalo, nilgai, and spiral-horned antelopes, and the subfamily Antilopinae which includes all other bovids. They also recognize that the Bovidae is monophyletic – that all bovids share a common ancestor.

Fossil bovids are common elements in Miocene and younger faunas in Africa and Eurasia (Bibi et al. 2009) and from near the end of the Miocene in North America (Martin and Mead, 2022). With a range of ecological niches filled by bovids, their fossils are important lines of evidence for reconstructing habitats of fossil assemblages. Bibi (2009) and Bibi et al. (2007) note the utility of molar morphology for inferring diets of bovines – noting that the earliest bovids had simple teeth, little enamel plication (folding) and sharp-wearing cusps and are interpreted as forest-dwelling browsers. Grazing bovids tend to have more complicated molars with complicated, plicated enamel for grinding grasses and likely reflect a move into more open grasslands as the world cooled and grasslands proliferated in the later Miocene and Pliocene. DeGusta and Vrba (2003) use a discriminant analysis of the shape of the astragalus (one of the ankle bones) of various bovids to show that the morphology of the astragalus appears to correlate with environment that the animal lives in – with broader, larger astragali characterizing bovids living on plains or in densely covered areas, and thinner, more gracile astragali characterizing bovids living in forests.

Phylogenetic studies generally place the genus *Rupicapra* in close proximity to the caprine and the ovibovine tribes on tree diagrams as a larger grouping of goats, sheep, musk oxen and related species (see Figure 2). The rupicapriini are rare as fossils – as sadly, the environments they live in are subject to much weathering and erosion – which not only strips sediment from the mountains but would also break down organic remains. Masini and Lovari (1988) also note that differences in behavior likely explain the lack of rupicapriini remains in Pleistocene hominid midden pits and other sites – unlike caprinids (goats, ibex), chamois tend to run when threatened whereas the ibex prefers to climb steep slopes to avoid predation (perhaps making them more susceptible for hunting using propelled objects such as spears). The rupicapriini have a fossil record stretching back to the Early Pliocene (approximately 5 million years ago) with examples from North America – *Neotragocerus* from the Snake River Valley, Oregon (Harington, 1971; Martin and Mead, 2022), *Myotragus* from the Balearic Islands, and *Nesogoral* from Sardinia (Masini and Lovari, 1988). Masini and Lovari cite that the earliest examples of the genus *Rupicapra* come from Middle Pleistocene sediments from Arago Cave in southern France, a cave inhabited by Tautavel man (Rivals et al. 2004). These hominids are members of *Homo erectus*. *Rupicapra* is rare in the skeletal remains in the cave – other caprinids were much more common elements of the hominid meals.

Masini and Lovari (1988) list the occurrences of fossil *Rupicapra* known at the time they wrote their paper – most date from the Würm glaciation (the last of the Pleistocene glaciations – generally referred to as the Wisconsinan glaciation in the United States) which started approximately 115,000 years ago and ended at 11,700 years ago. The bulk of the fossils are isolated horn cores, though a few include horn cores with frontal bones or well-preserved skulls. Corlatti et al. (2022b) lament the poor record and lack of paleontological research on chamois – they note that chamois were present in eastern Europe by 800,000 years ago with *R. pyrenaica* fossils dating to 440,000 years ago in southern French Pyrenees – they agree with Masini and Lovari (1988) that the northern chamois did not extend their range south into the Pyrenees and Apennines allowing these ranges to serve as a refuge for the southern chamois subspecies.

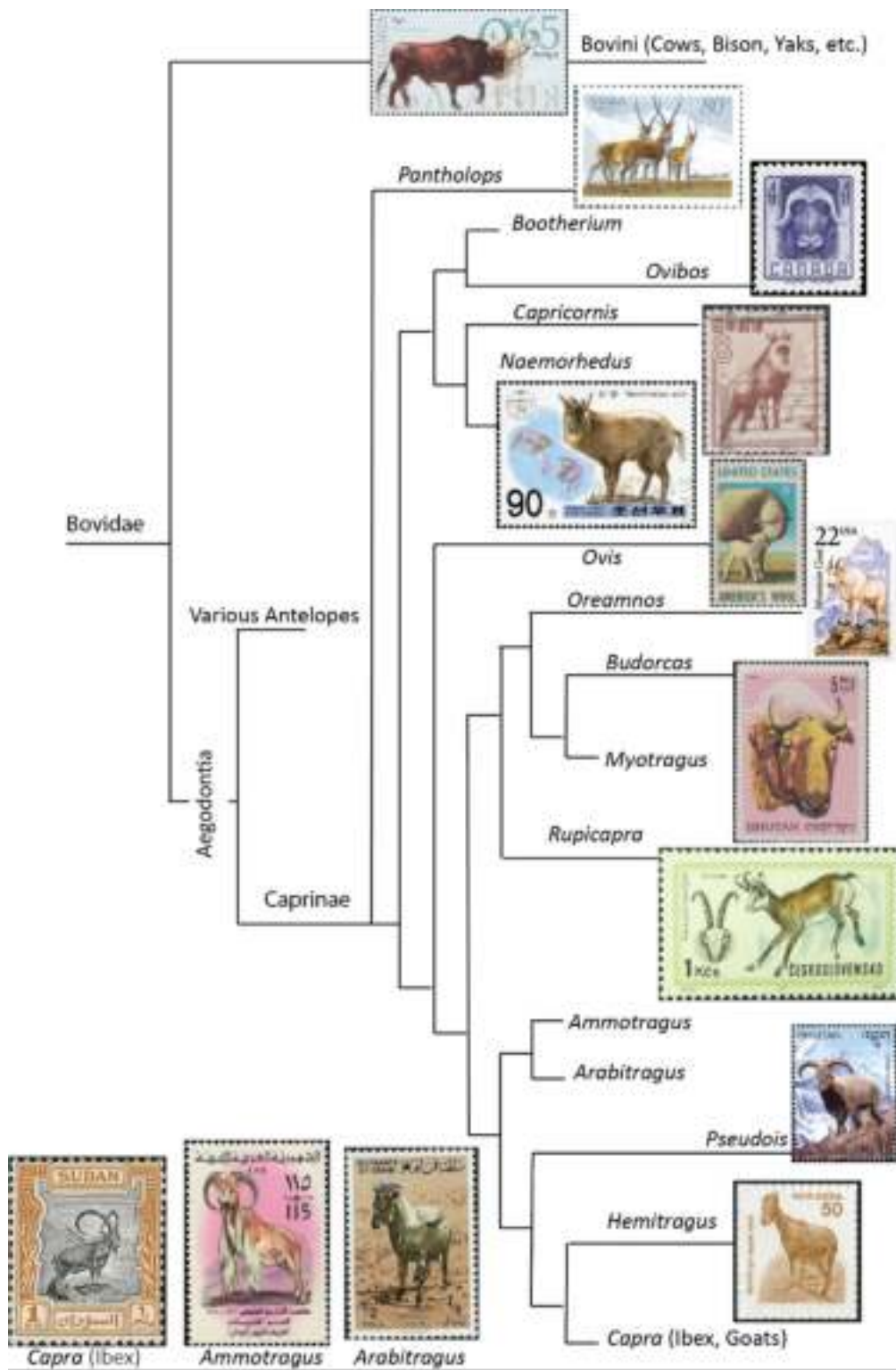


Figure 2: Phylogenetic tree of the Family Bovidae – the bulk of the branches shown are the subfamily Caprinae – the goats, sheep, and their relatives. In the descriptions below, each stamp lists the common name of the animal, the species name, country, year of publication, and Scott Catalog number. Stamps shown include (from the top of the diagram and moving down): Aurochs *Bos primigenius*, Bulgaria 2018 #5383 (note that this stamp is meant to represent the subfamily Bovinae and the multiple genera that belong to it); Tibetan Antelope or Chiru *Pantholops hodgsonii*, People's Republic of China 2003 #3287; Musk Ox *Ovibos moschatus*, Canada 1955 #352; Japanese Serow *Capricornis crispus*, Japan 1952 #588; Goral *Naemorhedus goral*, Democratic Republic of Korea 2001 #4167; Sheep *Ovis aries*, United States 1971 #1423; Mountain Goat *Oreamnos americanus*, United States 1988 #2323; Takin *Budorcas taxicolor*, Bhutan 1966 #67; Chamois *Rupicapra rupicapra*, Czechoslovakia 1971 #1763; Bhoral *Pseudois nayaur*, Bhutan 2014 #1491b; and Himalayan Tahr *Hemitragus jemlahicus*, India 2000 #1821. Lower left of diagram (adjacent to tree) from left to right: Nubian ibex *Capra nubiana*, Sudan 1951 #98; Barbary Sheep *Ammotragus lervia*, Libya 1976 #616; and Arabian Tahr *Arabitragus jayakari*, Oman 1982 #269. Note that the only genus of the subfamily Caprinae

that has not been depicted on a stamp yet is the extinct *Botherium* which has one species, *B. bombiformis*. This was a bovid from the middle to late Pleistocene of North America which is sometimes referred to as the woodland muskox or Harlan's muskox and is closely related to the living muskox.

References

- Bibi, F., 2009, Evolution, Systematics, and Paleoecology of Bovinae (Mammalia: Artiodactyla) from the Late Miocene to the Recent, Unpublished PhD Dissertation, Yale University, 469 p.
- Bibi, F., Bukhsianidze, M., Gentry, A.W., Geraads, D., Kostopoulos, D.S., and Vrba, E.S. 2009, The Fossil Record and Evolution of Bovidae: State of the Field, *Palaeontological Electronica*, 12(3): 10 p.
- CIRCABC European Commission report: [https://circabc.europa.eu/sd/a/ee8141ca-3f53-45e8-acbd-5525aa70f9e4/SK%20-%20Northern%20Chamois%20\(Rupicapra%20rupicapra%20atrica\)%20-%20Final.pdf](https://circabc.europa.eu/sd/a/ee8141ca-3f53-45e8-acbd-5525aa70f9e4/SK%20-%20Northern%20Chamois%20(Rupicapra%20rupicapra%20atrica)%20-%20Final.pdf)
- Corlatti, L., Herrero, J., Ferretti, F., Anderwald, P., Garcia-Gonzalez, R., Hammer, S.E., Nores, C., Rossi, L., and Lovari, S. 2022a, Northern Chamois *Rupicapra rupicapra* (Linnaeus, 1758) and Southern Chamois *Rupicapra pyrenaica* Bonaparte, 1845, In Corlatti, L. and Zachos, F.E. (Eds.) *Terrestrial Artiodactyla, Handbook of the Mammals of Europe*, Springer, p. 325-366.
- Corlatti, L., Iacolina, L., Safner, T., Apollonio, M., Buzan, E., Ferretti, F., Hammer, S.E., Herrero, J., Rossi, L., Serrano, E., Arnal, M.C., Brivio, F., Chirichella, R., Cotza, A., Cretanello, B., Espunyes, J., Fernandez de Luco, D., Friedrich, S., Gačić, D., Grassi, L., Grignolio, S., Hauffe, H.C., Kavčić, K., Kinser, A., Lioce, F., Malagnino, A., Miller, C., Peters, W., Pokorny, B., Reiner, R., Rezić, A., Stipoljev, S., Tešija, T., Yankov, Y., Zwijacz-Kozica, T., and Šprem, N. 2022b, Past, present and future of chamois science, *Wildlife Biology*, e01025, doi: 10.1002/wlb3.01025, 13 p.
- DeGusta, D. and Vrba, E. 2003, A method for inferring paleohabitats from the functional morphology of bovid astragali, *Journal of Archaeological Science*, 30: 1009-1022.
- Garel, M., Loison, A., Jullien, J.-M., Dubray, D., Maillard, D., and Gaillard, J.-M. 2009, Sex-specific Growth in Alpine Chamois, *Journal of Mammalogy*, 90(4):954-960.
- Harington, C.R. 1971. A Pleistocene mountain goat from British Columbia and comments on the dispersal history of *Oreamnos*. *Canadian Journal of Earth Sciences*, 8:1081-1093.
- Hassanin, A. and Douzery, E.J.P. 1999, The Tribal Radiation of the Family Bovidae (Artiodactyla) and the Evolution of the Mitochondrial Cytochrome b Gene, *Molecular Phylogenetics and Evolution* 13(2): 227-243.
- Linnaeus, 1758, *Systema Naturae*, 10th edition.
- Martin, J.E. and Mead, J.I. 2022, The earliest known North American bovid, *Neotragocerus*, *Journal of Vertebrate Paleontology*, 42(2): paper e2163176, 20 p.
- Masini, F. and Lovari, S. 1988, Phylogenetic Relationships, and Dispersal of the Chamois (*Rupicapra spp.*), *Quaternary Research*, 30: 339-349.
- Papaioannou, H.I. and Kati, V.I. 2007, Current status of the Balkan chamois (*Rupicapra rupicapra balcanica*) in Greece: Implications for conservation, *Belgian Journal of Zoology*, 137(1): 33-39.
- Pérez-Barbería, F.J. and Mutuberría, G. 1996, Teeth eruption pattern in Cantabrian chamois *Rupicapra pyrenaica parva*, *Acta Thetiologica* 41(2):217-221.
- Rivals, F., Kacimi, S., and Moutoussamy, J. 2004, Artiodactyls, favourite game of prehistoric hunters at the Caune de l'Argo Cave (Tautavel, France). Opportunistic or selective hunting strategies? *European Journal of Wildlife Research*, 50: 25-32.

https://www.ultimateungulate.com/Artiodactyla/Rupicapra_rupicapra.html

Postmarks of the FDCs of the Underwater Flora and Fauna Issues – Europa Stamps Edition, Part 4

Peter Voice BU#1891

This part of the series focuses on the postmarks used on the first day of issue of the Europa Underwater Flora and Fauna stamps. Brief descriptions of the postmarks will follow – most countries issued a single commemorative postmark, but others issued more than one. The postmarks will be presented in alphabetical order by country of issue.

The Åland Islands (Finland) issued two commemorative postmarks. The maximum card included a special cancellation showing a sketch of a Baltic Sea Mussel (*Macoma baltica*). The FDC included a cancellation with a sketch of the perch (*Perca fluviatilis*).

Both the Spanish and French Postal Administrations for the Principality of Andorra issued special cancellations for their Europa issues. The Spanish administration postmark is a sketch of the Pyrenean Triton (*Calotriton asper*) which was also highlighted on the stamp. Both the official maximum card and FDC used the same postmark for the French Postal Administration – which shows a sketch of a salmonid – likely one of the two species shown on the stamps.

The postmark used for the local issue of the Armenian Post of Nagorno-Karabakh includes a second sketch of the Wels Catfish (*Silurus glanis*) after the second issue in their set.

Armenia's postmark includes a sketch of a fish – I suspect it is the Sevan Trout (*Salmo ischchan gegarkun*) though it is not clear from the press release.

Austria Post used a sketch of the Green Lake (Grüner See) like the stamp on their FDC.

Azerbaijan used an interesting postmark for their issue. The main element is a coiled nautiloid-like shell with a small, stylized school of fish swimming away from the shell's opening.

It was difficult to find a decent image of Belgium's first day cover and associated postmark nor have I seen listings on Ebay or other Auction sites. The postmark has a sketch of the European Eel (*Anguilla anguilla*) next to seaweed.

All three Bosnian Postal Administrations issued stamps and associated postmarks for the Underwater Flora and Fauna theme. BH Posta's postmark is circular with the Europa logo in the center of the circle. Croatian Post Mostar postmark is a sketch of the green alga *Acetabularia acetabulum* which was also depicted one of the stamps issued. The final administration, the Republic of Srpska (Serb) Post also used a sketch of plant shown on the 1.95 BAM stamp. Both the stamp and postmark depict the Greater Bladderwort (*Utricularia vulgaris*). The Greater Bladderwort is arranged as the border of two sides of the postmark – the length of the stalk with inflorescences on the left, trailing to the bottom of the postmark.

Bulgaria Post issued a special postmark with a circular shape. Within the postmark are stylized waves. Google translate suggests that the text in the center reads European Flora and Fauna.

I have seen two variants of Croatia Post's commemorative postmark for their Underwater Flora and Fauna stamps. Both postmarks depict a sketch of the Noble Pen Shell (*Pleminita periska*). The second variant has a small color image of the Croatian Flag to the left of the sketch.

The postmark issued by Cyprus post for the Underwater Flora and Fauna issue is a sketch of an alga (?) with a bivalve and starfish.

The press release of the Czech Post describes the fish illustrated on the postmark as "Europe's largest fish, the catfish". I believe this is another example of the Wels Catfish (*Silurus glanis*).



Figure 1: Top row from left to right: Åland Islands FDC and Maximum Card postmarks, Andorra (French Postal Administration, and Andorra (Spanish Postal Administration). Second row from top: Armenian Post of Nagorno-Karabakh (local issue), Armenia, Austria. Third row from top: Azerbaijan, Belgium, Bosnia Herzegovina – BH Posta, Bosnia Herzegovina – Croatian Post Mostar. Bottom row: Bosnia Herzegovina – Republic of Srpska, Bulgaria, and both Croatian variants.

Denmark's PostNord used a sketch of what I think is the red algae, *Phycodrys rubens* on their postmark. This species was also depicted on one of the stamps in the set.

The commemorative postmark used by Estonia Post shows a sketch of the Zander (*Sander lucioperca*) which was also depicted on one of the stamps in the set. The sketch has a more dynamic pose than shown on the stamp.

The Faroe Islands Post used a photograph on the official FDC cachet and a sketch of the same gastropod on the postmark. I believe both are examples of the genus *Nerita*.

Finland commemorated the Moon Jellyfish (*Aurelia aurita*) on both the cachet and postmark for their Europa issue.

The commemorative postmark for France's Europa issue shows a variety of fish.

The German commemorative postmark surprisingly does include stylized sketches of animals – in this case on the left, a jellyfish, and at the top a whale. Around the margin of the postmark are stylized seaweeds and corals (?).



Figure 2. Top row from left to right: Cyprus, Czech Republic, Denmark, and Estonia. Second row from top: Faroe Islands, Finland, France, and Germany. Third row from top: both Gibraltar postmarks, Greece, and Greenland. Bottom row: Guernsey, Hungary, Ireland, and Isle of Man.

Gibraltar issued a postmark on the first day of issue that includes a sketch of the Loggerhead Sea Turtle (*Caretta caretta*). A second postmark was issued on the first day of issue of the Post and Go self-adhesive labels. The second postmark depicts the Killer Whale (*Orcinus orca*). Both postmarks are sketches of animals depicted on the stamps of the set.

I have yet to come across a FDC for the Republic of Georgia's Underwater Flora and Fauna issue – nor is there any information on <https://www.gpost.ge/>.

The commemorative postmark on Greek Underwater Flora and Fauna FDCs shows a pair of ram's horn squid (*Spirula spirula*).

Like Denmark, Greenland Post used a sketch of red algae on both a stamp and the commemorative postmark. Both the stamp and the postmark depict sketches of *Fimbrifolium dichotomum*.

Guernsey Post used a sketch of a jellyfish for their commemorative postmark. It is unclear to me which species is depicted.

Hungary Post's press release on WOPA+ describes the postmark as "a stylised composition of a catfish and aquatic plants". Presumably this is another example of the Wels Catfish as on the Czech postmark.

The postmark of Ireland's Europa contribution depicts the Compass Jellyfish (*Chrysaora hysoscella*) in a different pose than the sketch on the W-rate stamp in the set.

Isle of Man issued the Marine Mosaic stamps with one stamp denoted as their contribution to the Europa theme. The postmark consists of the text Marine Mosaics with the date of issue and Europa logo encircled by text stating First Day of Issue and Douglas, Isle of Man. Douglas is the capital of the Isle of Man.

Italy used sketches of a North Atlantic Swordfish (*Xiphias gladius*), the Loggerhead Sea Turtle (*Caretta caretta*), and a third fish that I cannot identify.

The commemorative postmark used for the Europa Underwater Flora and Fauna issue for Jersey used a sketch of a shell in the genus *Pecten*. Pectinids are more commonly referred to as scallops.

Kosovo used a sketch of a fish over algae in their commemorative postmark. The sketch looks like the Prussian Carp (*Carassius gibelio*) depicted on the €2.10 stamp. The Kosovo Post's press release does not have information on the postmark.

Both the official FDC cachet and postmark from Latvia depict the River Trout (*Salmo trutta fario*) which is also depicted on the €1.91 stamp from the issue. Each sketch has a different pose.

Like Latvia, Liechtenstein used stylized sketches of the organisms depicted on their stamps on their commemorative postmark. The circular postmark has seaweed of the genus *Potamogeton* on the right. The bottom of the postmark is a sketch of the Egli or European Perch (*Perca fluviatilis*).

Lithuania's commemorative postmark is a sketch of the Dwarf White Water Lily (*Nymphaea candida*), which was also shown on one of the stamps. The sketch focuses on the flower of the plant.

Luxembourg used a sketch of an ichthyosaur, a prehistoric marine reptile on their postmark. The postmark shows the head of the animal with jaws open. The E or domestic stamp in the set also depicts an ichthyosaur in a reconstructed life pose in a Mesozoic Sea.

Malta used a stylized sketch of a starfish probably the same species as shown on the €1.50 stamp which depicts *Hacelia attenuata*. On both sides of the starfish are stylized seaweeds.

The Moldovan postmark is a circular postmark with both faunal elements from the stamps reproduced as sketches. At the bottom of the postmark is the European Crayfish (*Astacus astacus*). At the top and facing in the opposite direction is the beluga or sturgeon (*Huso huso*).



Figure 3: Top row from left to right: Italy, Jersey, Kosovo, and Latvia. Second row from top: Liechtenstein, Lithuania, Luxembourg, and Malta. Third row from top: Moldova, Monaco, Montenegro, and the Netherlands. Bottom row: Northern Macedonia, Norway, Poland, and Portugal (Mainland Portugal, the Azores, and Madeira).

Monaco also used a sketch of the same species on both its stamp and postmark - in this case the common octopus (*Octopus vulgaris*).

The commemorative postmark on the FDC for Montenegro is a sketch of the Gold Coral (*Savalia savaglia*). A similar sketch to the postmark in yellow is the main element of the cachet on the FDC.

Netherlands Post has an incredibly detailed description of their Underwater Flora and Fauna stamps on WOPA+, which sadly lacks information on the postmark used to cancel the FDC. The postmark has a sketch of a bivalve with its valves open. The shape and ornamentation of the bivalve is suggestive of the mussel, *Mytilus edulis*.

Northern Macedonia used a sketch of the fairy shrimp (*Chirocephalus pelagonicus*) on their postmark. The pose is like the photograph of a fairy shrimp on their souvenir sheet.

Norway Post used a sketch of a fish next to kelp on their commemorative postmark – a sketch like the photograph on the souvenir sheet. It is not clear to me what fish species is shown – as the press release does not include any relevant information.

Poland's press releases do not have information about the postmark used for the Underwater Flora and Fauna issue. It appears to be a sketch of a flowering aquatic plant.

Mainland Portugal, the Azores, and Madeira used the same commemorative postmark on their FDCs. The cancellation has a stylized sketch of seaweed – likely kelp. The press release at WOPA and at CTT Correios de Portugal did not have information about what was depicted. Their Noticiário Filatélico No. 27 did list that the postmark would be used at five different locations including two locations in Lisbon, Porto (the second largest city in mainland Portugal), Ponto Delgada (the capital of the Azores), and Funchal (the capital of Madeira). The cities are listed in the lower left quadrant of the postmark. The postmark shown in Figure 3 is from the Loja CTT Restauradores location in the historic district of Lisbon.

Romania issued a commemorative postmark with a stylized fish to go along with their Underwater Flora and Fauna stamps. The striped pattern near the head of the fish is like both the Zander (shown on the 4L stamp) or the pike (shown on the cachet of the FDC). Romania issued a special philatelic folder with a block of the 2 stamps printed imperforate has the same postmark imprinted in gold foiling.

San Marino issued a commemorative postmark with a similar design to their €2.70 stamp which depicts a diving beetle of the species *Scarodytes ruffoi*.

Serbia's commemorative postmark was a simple circular cancellation with the Europa Logo and the text Underwater Flora and Fauna like the Bulgarian postmark.

Slovakia's issue highlighted the flora and fauna of the lakes of the Tatra Mountains. Their cancellation for the FDC shows a mountainous terrain to represent the Tatra Mountains.

Slovenia issued a circular postmark with the text surrounded by wavy lines – perhaps a representation of water waves.

The seagrass *Posidonia oceanica* was the highlight of both the stamp and postmark for Spain's Underwater Flora and Fauna stamps.

Sweden's Nord Post press releases did not have information on the postmark for the Underwater Flora and Fauna stamps. The postmark's central element is a sketch of a starfish.

Switzerland's commemorative postmark is one of the more unusual cancellations for the set. It is a circular postmark that looks like a porthole of a ship. The center of this window has the text honoring the first day of issue (in multiple languages), the date of issue, and the Europa logo. The wavy lines running across the window suggest waves.

The local issues from Transnistria used a cancellation on the FDC that depicts a sketch of seaweed with a fish. I was not able to find information about the cancellation. Also note that these stamps are not valid outside Transnistria – and any cover from Transnistria will also have Moldovan stamps or require postage due from the recipient.

The commemorative postmark used by Turkey includes a stylized underwater scene of fish and corals – with the water being somewhat turbulent as shown by the “bubbles”. PTT's press release mentions the postmark being available on the day of issue at the Turkish Postal Museum but does not provide a description of the postmark. Turkish Cyprus has a similar commemorative postmark.

A sketch of three fish graces the commemorative postmark used by the Ukraine Post on their first day

covers and maximum cards for their Europa issue. Their press releases and product descriptions do not include a description of which fish species is shown. There is less suggestion of ornamentation on these fish – and I am leaning towards an interpretation of these being females of the East Atlantic peacock wrasse (*Symphodus tinca*). One of the stamps depicts a male of the species.

The last country, the Vatican City, cancelled their FDCs with a commemorative postmark that depicts a sketch of the American turtle (*Trachemys scripta*), which is also shown on the €1.30 stamp.



Figure 4: Top row from left to right: Romania, San Marino, Serbia, and Slovakia. Second row from top: Slovenia, Spain, and Sweden. Third row from top: Switzerland, Transnistria, and Turkey. Bottom row: Turkish Cyprus, the Ukraine, and Vatican City.

Scott Listings of the Europa issues

Scott#	Denom	Common Name/Scientific Name	Family/Subfamily	Code
FINLAND				
2024 May 8				
1724		Horizontal pair	Set/2	
1724a	€2.50	Common eelgrass, <i>Zostera marina</i>	Zosteraceae	A
1724b	€2.50	<i>Macrolea pubipennis</i>	Chrysomelidae	A
Åland Islands				
2024 May 8				
484	€3.20	<i>Zostera marina</i> with shelly epibionts	Zosteraceae	A
HUNGARY				
2024 June 20 (Europa)				
4697a	1055fo	<i>Beluga, Huso huso</i>	Acipenseridae	A
4697b	1055fo	<i>Carp, Cyprinus carpio</i>	Cyprinidae	A
KOSOVO				
2024 May 9 (Fish)				
541	€1	<i>Ohrid gudgeon, Gobio ohridanus</i>	Gobionida	A
542	€2.10	<i>Prussian carp, Carassius gibelio</i>	Cyprinidae	A
543	€2	Carp (likely <i>Cyprinus carpio</i>)	Cyprinidae	A
NORWAY				
2024, May 31 (Europa)				
1992	31k	Fish and kelp*	Set/1 + SS Multiple	A
1993	31k	Seal and Jellyfish	Multiple	A

Notes

*Norway 1992 – Linns Scott New Listing Update notes that this issue was sold for 41k. 10k from the sale of each stamp went to the Nordia 2024 Philatelic Exhibition held in Langesund, Norway.



BOTANY

Editor

Christopher E. Dahle BU 1269



Scott #	Denom	Common Name	Botanical Name	Family	Code
BOLIVIA					
1543A	4b	Quinoa plants in field, <i>Chenopodium quinoa</i>	Quinoa type of 2012 [Vol 62(3) p157] with red handstamp	Amaranthaceae	Fr A
CHINA (TAIWAN)					
2024 October 9 (Taipei Tourist Attractions) Set/4					
4746	\$8	Zhuzihu Calla Lily Festival, <i>Zantedeschia aethiopica</i>		Araceae	Fl A
2025 January 15 (Hsinchu Tourist Sites) Set/4					
4760	\$12	Sinfong Mangrove Nature Reserve, <i>Kandelia obovata</i>		Rhizophoraceae	V A
		Black mangrove, <i>Avicennia marina</i>		Acanthaceae	V A
CHINA (People's Republic)					
2024 May 31 (Diplomatic relations with Malaysia 50y) Set/2					
5054	\$1.2	Pine tree, <i>Pinus hwangshanensi</i>		Pinaceae	T A
5055	\$1.2	Merbau tree, Borneo teak, <i>Intsia palembanica</i>		Fabaceae	T A
EGYPT					
2024 March (Flowers) Set/6					
2319		Sheet of 6			
2319a	£10	Carnations, <i>Dianthus caryophyllus</i>		Caryophyllaceae	Fl A MS
2319b	£10	Lotus, <i>Nelumbo nucifera</i>		Nelumbonaceae	Fl A MS
2319c	£10	Rose, <i>Rosa x hybrida</i>		Rosaceae	Fl A MS
2319e	£10	Jasmine, <i>Jasminum officinale</i>		Oleaceae	Fl A MS
2319f	£10	Water hyacinth, <i>Pontederia crassipes</i>		Pontederiaceae	Fl A MS
		Narcissus, <i>Narcissus tazetta</i>		Amaryllidaceae	Fl A MS
CZECH REPUBLIC					
2025 February 12 (Wallachian Open Air Museum) SS/1					
3987	82k	Roses, <i>Rosa sp.</i>		Rosaceae	Fl B SS Z
FAROE ISLANDS					
2024 June 24 (Four Seasons) Set/4					
858		Sheet of 4			
858a	23k	Buttercups, <i>Ranunculus sp.</i>		Ranunculaceae	Fl B
		Unidentified flowers			Fl B U
858b	23k	Clover, <i>Trifolium praetense</i>		Fabaceae	Fl B
		Dandelion, <i>Taraxacum officinale</i>		Asteraceae	Fl B
		Dryas, <i>Dryas sp.</i>		Rosaceae	Fl B
		Unidentified flowers			Fl B U
858c	23k	Unidentified flowers			Fl B U
		Unidentified leaves			V B U
858d	23k	Evergreen branch		Pinaceae	V B U
FINLAND					
2024 January 17 (Taste of Summer) Single					
1711	(€2.20)	Strawberry, <i>Fragaria ananassa</i>		Rosaceae	Fr A
2024 January 17 (Spring Dreams) Set/5					
1712	(€2.20)	Floral wreath			Fl A
1713	(€2.20)	Unidentified flowers			Fl A U

FINLAND (continued)

1714	(€2.20)	Dahlias, <i>Dahlia x hybrida</i>	Asteraceae	Fl A
1715	(€2.20)	Roses, <i>Rosa x hybrida</i>	Rosaceae	Fl A
1716	(€2.20)	Unidentified flowers		Fl A U
1716a		Booklet pane of 10, 2 each #1712-16		

2024 May 8 (Europa: Underwater Flora & Fauna) Set/2

1724 Pair

1724a	(€2.50)	Eelgrass, <i>Zostera marina</i>	Zosteraceae	V A
-------	---------	---------------------------------	-------------	-----

Åland **2024 May 8** (Europa: Underwater Flora & Fauna) Single

484	(€3.20)	Eelgrass and plankton, <i>Zostera marina</i>	Zosteraceae	V A
-----	---------	----------------------------------------------	-------------	-----

GHANA

2023 April 13 (Mount Kilimanjaro) SS/4

2993 15 ce Sheet of 4

2993b		Mount Kilimanjaro and tree, <i>Acacia sp.</i>	Fabaceae	T B
-------	--	-----------------------------------------------	----------	-----

2023 May 8 (Flowers) Set/4, SS/1

3005 Sheet of 5

3005a	14ce	Bougainvillea, <i>Bougainvillea spectabilis</i>	Nyctaginaceae	Fl A
-------	------	-------------------------------------------------	---------------	------

3005b	14ce	Hibiscus, <i>Hibiscus rosa-sinensis</i>	Malvaceae	Fl A
-------	------	-----------------------------------------	-----------	------

3005c	14ce	Orchid, <i>Phalaenopsis sp.</i>	Orchidaceae	Fl A
-------	------	---------------------------------	-------------	------

3005d	14ce	Deseret rose, <i>Adenium obesum</i>	Apocynaceae	Fl A
-------	------	-------------------------------------	-------------	------

3005e	14ce	Plumeria, <i>Plumeria rubra</i>	Apocynaceae	Fl A
-------	------	---------------------------------	-------------	------

3006	30ce	African daisy, <i>Gerbera sp.</i>	Asteraceae	Fl A
------	------	-----------------------------------	------------	------

GREAT BRITAIN **2024 April 16** (Commemorative Stamps of Great Britain 100y) Set/10, MS/10

4487	1st (£1.35)	#393 s-o-s Buttercup, <i>Ranunculus sp.</i>	Ranunculaceae	Fl B
------	-------------	---------------------------------------------	---------------	------

		#393 s--o-s English daisy, <i>Bellis perennis</i>	Asteraceae	Fl B
--	--	---------------------------------------------------	------------	------

4490	1st (£1.35)	#1168 s-o-s Gaillardia, <i>Gaillardia sp.</i>	Asteraceae	Fl B
------	-------------	-----------------------------------------------	------------	------

4492	1st (£1.35)	#2530 s-o-s Poppy, <i>Papaver rhoeas</i>	Papaveraceae	Fl B
------	-------------	------------------------------------------	--------------	------

4495 Sheet of 10 + 10 labels

4495d	1st (£1.35)	#393 s-o-s Buttercup, <i>Ranunculus sp.</i>	Ranunculaceae	Fl B
-------	-------------	---------------------------------------------	---------------	------

		#393 s--o-s English daisy, <i>Bellis perennis</i>	Asteraceae	Fl B
--	--	---------------------------------------------------	------------	------

4495f	1st (£1.35)	#1168 s-o-s Gaillardia, <i>Gaillardia sp.</i>	Asteraceae	Fl B
-------	-------------	-----------------------------------------------	------------	------

4495h	1st (£1.35)	#2530 s-o-s Poppy, <i>Papaver r hoeas</i>	Papaveraceae	Fl B
-------	-------------	-------------------------------------------	--------------	------

Wales & Monmouthshire

2024 November 14 (Definitives) Set/2

61	2nd	Leek, <i>Allium ampeloprasum</i>	Amaryllidaceae	V A
----	-----	----------------------------------	----------------	-----

GREENLAND

2025 January 31 (Flowers) Set/2

980	4k	Dwarf fireweed, <i>Epilobium (=Chamaenerion) latifolium</i>	Onagraceae	Fl A
-----	----	-------------------------------------------------------------	------------	------

981	19k	Lapland rosebay, <i>Rhododendron lapponicum</i>	Ericaceae	Fl A
-----	-----	-------------------------------------------------	-----------	------

JAPAN

2024 May 1 (Greetings) Set/3

4731	¥63	Taraji holly leaf, <i>Ilex latifolia</i>	Aquifoliaceae	V A
------	-----	------------------------------------------	---------------	-----

2024 May 15 (Happy Greetings) Set/15

4735 Sheet of 10, 2 each #4735a-e

4735a	¥84	Lily, <i>Lilium aurantum</i>	Liliaceae	Fl A
-------	-----	------------------------------	-----------	------

4735b	¥84	Forget-me-nots, <i>Myosotis scorpioides</i>	Boraginaceae	Fl A
-------	-----	---------------------------------------------	--------------	------

4735c	¥84	Lily-of-the-valley, <i>Convallaria majalis</i>	Asparagaceae	Fl A
-------	-----	------------------------------------------------	--------------	------

4735d	¥84	Violets, <i>Viola sp.</i>	Violaceae	Fl A
-------	-----	---------------------------	-----------	------

4735e	¥84	Daisies, <i>Leucanthemum vulgare</i>	Asteraceae	Fl A
-------	-----	--------------------------------------	------------	------

2024 May 22 (National Afforestation) Set/5

4737	¥84	Japanese red pine, <i>Pinus densiflora</i>	Pinaceae	V B
------	-----	--------------------------------------------	----------	-----

		Round leaf holly, <i>Ilex latifolia</i>	Aquifoliaceae	Fr B
--	--	-----------------------------------------	---------------	------

JAPAN (continued)

4738	¥84	Cherry blossoms and stylized trees, <i>Prunus serrulata</i>	Rosaceae	Fl B
4739	¥84	Hinoki Cypress, <i>Chamaecyparis obtusa</i>	Cupressaceae	V B
		Japanese witch-hazel, <i>Hamamelis japonica</i>	Hamamelidaceae	Fl B
4740	¥84	Japanese maple leaves and stylized trees, <i>Acer palamata</i>	Sapindaceae	V B
4741	¥84	Cherry blossoms, <i>Prunus serrulata</i>	Rosaceae	Fl B
		Japanese cedar, <i>Cryptomeria japonica</i>	Cupressaceae	V B
4741a		Vert strip of 5		

2024 June 5 (Summer Greetings) Set/10

4742		Sheet of 10		
4742b	¥63	Gourds, <i>Lagenaria siceraria</i>	Cucurbitaceae	Fr A
4742c	¥63	Morning glories, <i>Ipomoea purpurea</i>	Convolvulaceae	Fl A
4742d	¥63	Corn, <i>Zea mays</i>	Poaceae	Fr A
4743		Sheet of 10		
4743a	¥84	Sunflowers, <i>Helianthus annuus</i>	Asteraceae	Fl A
4743b	¥84	Morning glories, <i>Ipomoea purpurea</i>	Convolvulaceae	Fl A
4743c	¥84	Watermelon, <i>Citrullus lanatus</i>	Cucurbitaceae	Fr A

2024 June 19 (Redesign of Banknotes) Set/10

4744		Sheet of 10		
4744a	¥84	Cherry blossoms, <i>Prunus serrulata</i>	Rosaceae	Fl A
4744d	¥84	Pawlonia leaves and blossoms, <i>Pawlonia tomentosa</i>	Paulowniaceae	Fl V A
4744h	¥84	Cherry blossoms, <i>Prunus serrulata</i>	Rosaceae	Fl A

2024 September 2 (Definitives) Set/12

4750	¥22	Cherry leaves, <i>Prunus serrulata</i>	Rosaceae	V A
4754	¥85	Pine branches, <i>Pinus densiflora</i>	Pinaceae	V A
4755	¥85	Chrysanthemums, <i>Chrysanthemum millefolium</i>	Asteraceae	Fl A

KOREA (SOUTH)**2023 October 6 (Flowering Vegetable Plants) Set/2**

2662		Pair		
2662a	430w	Gourd, calabash, <i>Lagenaria siceraria</i>	Cucurbitaceae	Fl A
2662b	430w	Gomchwi, Fischer's ragwort, <i>Ligularia fischeri</i>	Asteraceae	Fl A

2024 July 25 (Paintings by Kim Whanaki) Set/4

2683a	430w	"Plum Blossoms in Jar", <i>Prunus domestica</i>	Rosaceae	Fl A
-------	------	-------------------------------------------------	----------	------

KOSOVO**2024 March 24 (Endemic Flowers) Set/4, no white frame**

534		Block of 4		
534a	30c	<i>Dianthus scardicus</i>	Caryophyllaceae	Fl A
534b	40c	<i>Aubrieta columnae ssp. croatica</i>	Brassicaceae	Fl A
534c	50c	Burnet, <i>Sanguisorba albanica</i>	Rosaceae	Fl A
534d	80c	Wulfenia, <i>Wulfenia carinthiaca</i>	Plantaginaceae	Fl A

Set/3 with white frames

535	30c	<i>Dianthus scardicus</i>	Caryophyllaceae	Fl A
536	40c	<i>Aubrieta columnae ssp. croatica</i>	Brassicaceae	Fl A
537	50c	Burnet, <i>Sanguisorba albanica</i>	Rosaceae	Fl A

2024 August 12 (Protected Trees) Set/3

550		Horiz strip of 3		
550a	80c	Oak, <i>Quercus robur</i>	Fagaceae	T A
550b	90c	Beech, <i>Fagus sylvatica</i>	Fagaceae	T A
550c	€1	Six oaks, <i>Quercus robur</i>	Fagaceae	T A

KYRGHIZ EXPRESS POST		2024 April 30 (Diplomatic Relations, 30 y)	Set/3	
198	150s	Ipe (Brazil), <i>Handroanthus chrysotrichus</i>	Bignoniaceae	Fl A
199	150s	Rafflesia (Indonesia), <i>Rafflesia arnoldii</i>	Rafflesiaceae	Fl A
200	150s	Linden (Czech Republic), <i>Tilia cordata</i>	Malvaceae	Fl A
LAOS		2024 May 22 (Orchids)	Set/4, 2xSS/2	
1993	11,000k	<i>Paphiopedilum rungsuriyanum</i>	Orchidaceae	Fl A
1994	33,000k	Laotian Butterfly-wing Paphiopedilum, <i>Paphiopedilum papiliolaoticum</i>	Orchidaceae	Fl A
1995	55,000k	Laotian Butterfly-wing Paphiopedilum, <i>Paphiopedilum papiliolaoticum</i>	Orchidaceae	Fl A
1995a	99,000k	Souvenir sheet of 2 #1994-95		Fl A SS Z
1996	77,000k	<i>Paphiopedilum rungsuriyanum</i>	Orchidaceae	Fl A
1996a	99,000k	Souvenir sheet of 2 #1993, #1996		Fl A SS Z
Unlisted		Souvenir sheet of 2 #1993, #1995		Fl A SS Z
Unlisted		Souvenir sheet of 2 #1994, #1996		Fl A SS Z
LIECHTENSTEIN		2024 November 4 (Illustrations of Plants from Old Natural Science Books)	Set/4	
1942	100rp	Mandrake, <i>Mandragora sp.</i>	Solanaceae	V A
1943	120rp	Medicinal herb		V A U
1944	190rp	Onion, <i>Allium cepa</i>	Amaryllidaceae	V A
1945	250rp	Medicinal Flowering plant		Fl A U
MALAYSIA		2024 May 31 (Diplomatic relations with China, 50y)	Set/2	
1965		Pair		
1965a	\$1.50	Borneo teak, <i>Intsia palembanica</i>	Fabaceae	T A
1965b	\$1.50	Greeting Pine, <i>Pinus hwangshanensis</i>	Pinaceae	T A
NEW CALEDONIA		2024 July 22 (Medicinal Plants)	Set/4	
1310		Sheet of 4		
1310a	230fr	Nono, <i>Morinda citrifolia</i>	Rubiaceae	Fr A MS
1310b	230fr	Corossol, soursop, <i>Annona muricata</i>	Annonaceae	Fr A MS
1310c	230fr	Faux-tabac, <i>Heliotropium arboreum</i>	Boraginaceae	V A MS
1310d	230fr	Hmitre, <i>Coleus forsteri</i>	Lamiaceae	V A MS
TUNISIA		2023 September 22 (Harissa)	Set/2	
1814-15		Making Harissa with peppers, <i>Capsicum annuum</i>	Solanaceae	Fr B
		2024 January 10 (Diplomatic relations with China, 50y)		Single
1824	4d	Olives on branch, <i>Olea europaea</i>	Oleaceae	Fr B
		2024 June 5 (Agricultural systems)	Set/3	
1833	750m	Oasis of Gafsa: Pomegranate, <i>Punica granata</i>	Punicaceae	Fr B
		Olives, <i>Olea europaea</i>	Oleaceae	Fr B
		Dates and palm trees, <i>Phoenix dactylifera</i>	Arecaceae	Fr T B
1834	2d	Garden of Jebba El Olia: figs, <i>Ficus carica</i>	Moraceae	Fr B
1835	3d	Ghar El Melh: tomatoes, <i>Lycopersicon esculentum</i>	Solanaceae	Fr B
UNITED ARAB EMIRATES		2022 December 2 (National Day)	Set/5	
1242	3d	Leaves and satellites, <i>Acacia sp.</i>	Fabaceae	V B
1245	3d	Flowers and Saturn		Fl B U
		2023 August 22 (Almonds)	Set/2, Die cut 11¼ x 11	
1256	3d	Almond tree and fruit, <i>Prunus amygdalus</i>	Rosaceae	Fr T A
UNITED STATES		2025 March 14 (Vibrant Leaves)	Set/5	
5966	(56c)	Aspen, <i>Populus tremuloides</i>	Salicaceae	V A
5967	(56c)	Sassafras, <i>Sassafras albidum</i>	Lauraceae	V A

UNITED STATES (continued)

5968	(56c)	Oak, <i>Quercus alba</i>	Fagaceae	V A
5969	(56c)	Maple, <i>Acer saccharinum</i>	Sapindaceae	V A
5970	(56c)	Sweetgum, <i>Liquidambar styraciflua</i>	Altingiaceae	V A
2025 March 14 (Vibrant Leaves)			Set/5, Coil stamps, die cut 9½ vert	
5971	(56c)	Aspen, <i>Populus tremuloides</i>	Salicaceae	V A
5972	(56c)	Sassafras, <i>Sassafras albidum</i>	Lauraceae	V A
5973	(56c)	Oak, <i>Quercus alba</i>	Fagaceae	V A
5974	(56c)	Maple, <i>Acer saccharinum</i>	Sapindaceae	V A
5975	(56c)	Sweetgum, <i>Liquidambar styraciflua</i>	Altingiaceae	V A
5975a		Strip of 5 #5971-75		

Endangered Species

On 25 April 2025 the United Nations Postal Administration continues its Endangered Species stamp series with the issuance of twelve stamps, three maximum cards, a limited-edition silk cover and the 2025 Endangered Species folder.

For over 30 years, UNPA has issued stamps in support of CITES (the Convention on International Trade in Endangered Species of Wild Fauna and Flora) to raise awareness of the multitude of benefits that conservation provides to people.

This year's United Nations Endangered Species stamps series celebrates a remarkable collection of animal and plant species, across various taxonomic groups and ecosystems, facing diverse wildlife conservation challenges.

The 2025 series also celebrates the thirtieth anniversary of the Agreement on the Conservation of African-Eurasian Migratory Waterbirds (AEWA), featuring the white-headed duck, the African penguin and the grey crowned crane, which are listed both in the CITES Appendices and the AEWA species list. This collaboration emphasizes the importance of multilateral environmental agreements working in complementarity with each other to achieve shared global biodiversity goals.

Source: <https://www.wopa-plus.com/en/stamps/product/&pid=101389&origin=tid-17>



New Plants in the Philatelic Herbarium

By Christopher E. Dahle, BU 1269

Paphiopedilum rungsuriyanum ORCHIDACEAE

Miniature lithophyte. Leaves tessellated. Flowers have red-purple veins on an oval petal, purple lip. Found in northern Laos

Laos Scott #1993, #1996. Issued on 22 May 2024 of Endemic Orchids. Issued in sheets and souvenir sheets of #1993 & #1996, #1993 & #1995 and #1994 & #1996. Designed by Theoksone Pathoumthong. Printed by offset with a print run of 50,000. Printed in Vietnam.



Paphiopedilum papiliolaoticum ORCHIDACEAE

Common name: Laotian Butterfly-wing Paphiopedilum

Small lithophyte. Leaves 4-5, light green, pendent, linear. Inflorescence 22-32 cm, with single flower, 12 cm. Petal white with purple spots, bract green, lip purple. Endemic to Laos.

Laos Scott #1994, #1995. Issued on 22 May 2024 of Endemic Orchids. Issued in sheets and souvenir sheets of #1994 & #1995, #1994 & #1996 and #1993 & #1995. Designed by Theoksone Pathoumthong. Printed by offset with a print run of 50,000. Printed in Vietnam.



Dianthus scardicus CARYOPHYLLACEAE

Synonyms: *Dianthus nitidus subsp. lakusicii*, *Dianthus scardicus var. incisus*
Perennial herb, forming loose cushion. Leaves 2-3 mm. Flowers single on 1.5-10 cm stem, 1.5 cm diameter, pink. Grows on stony slopes and mountain grasslands in western Balkans.

Kosovo Scott #534a, 535. Issued 24 March 2024, in a series of Endemic Flora. Printed in blocks of 4 with borderless images, and in sheets of stamps with white borders.



Aubrieta columnae ssp. croatica BRASSICACEAE

Perennial subshrub, evergreen. Flowers purple to violet, 11-18 mm diameter. Grows on rocks and scree in NW Balkan peninsula.

Kosovo Scott #534b, 536. Issued 24 March 2024, in a series of Endemic Flora. Printed in blocks of 4 with borderless images, and in sheets of stamps with white borders.



Intsia palembanica FABACEAE

Common names: Borneo teak, Malacca teak, merbau, Moluccan ironwood
Tree to 50 m, with buttresses to 7 m. Leaves pinnately compound, alternate, deciduous. Flowers white, turning pink in racemes at ends of branches. Native to coastal and lowland tropical rainforests in Southeast Asia, and islands of SW Pacific.

Malaysia Scott #1965a. Issued 31 May 2024 to commemorate 50 years of diplomatic relations with China, in pairs.





Pinus hwangshanensis PINACEAE

Common names: Greeting pine

Synonyms: *Pinus henryi* subsp. *averyanovii*, *P. hwangshanensis* subsp. *transfluminea*, *P. luchuensis* subsp. *hwangshanensis*, *P. luchuensis* subsp. *shenkanensis*, *P. luchuensis* var. *hwangshanensis*, *P. luchuensis* var. *shenkanensis*, *P. taiwanensis* subsp. *damingshanensis*, *P. taiwanensis* var. *damingshanensis*
Evergreen tree 15-25 m. Needles 2 per fascicle, 5-8 cm. Cones ovoid, 4-6.5 cm long, yellow-brown. Native to mountains of eastern China.

Malaysia Scott #1965b. Issued 31 May 2024 to commemorate 50 years of diplomatic relations with China, in pairs.



Heliotropium arboreum BORAGINACEAE

Common names: Faux tabac, velvetleaf soldierbush, tree heliotrope, veloutier, octopus bush

Synonyms: *Argusia argentea*, *Heliotropium foertherianum*, *Messerschmidia argentea*, *Tournefortia arborea*, *T. argentea*

Tree to 10 m. Leaves alternate, light green, silvery, elliptical to obovate.

Flowers in terminal clusters, small, white, 61 mm diameter. Found in coastal environments on sandy beaches and rocky coral outcrops. Found from east Africa and Indian Ocean to Pacific islands.

New Caledonia Scott #1310c. Issued 22 July 2024 in a minisheet of 4 featuring Medicinal Plants.

Zoey can't hardly wait for the next issue of **Biophilately!**



She always gets her stamps from

Stamp Smith
Topical Stamps
U.S. and Worldwide Stamps,
Covers and Postcards
We organize by topic!

1212 NE 96th Terrace - Kansas City, MO 64155
Tel: 816.734.4536
Email: stodale@umkc.edu



FUNGI

Editor

Paul A. Mistretta, BU 1681



Ed. Note: Occasionally in this section and also in the Herpetology section, we will note a species that is known to be poisonous or venomous by marking it with a ☠ symbol. One should not infer that other species that are not so marked are non-poisonous or non-venomous or safe to handle/eat.

New Issues

Scott #Denom.	Common name; Scientific name	Family name	Code
CANADA			
2024 November 4			
3466a P[99¢]	Gingerbread house with mushrooms in the yard		BS
3468 P[99¢]	Gingerbread house with mushrooms in the yard		BS
3468a [\$5.94]	Gingerbread house with mushrooms in the yard – bklt of 6		BS
FAROE ISLANDS			
2024 June 24			
858c 23kr	Fall; mushrooms, ram, northern fulmar, flowers & leaves		BU
858 92kr	MS - 1 of 4 different seasonal stamps		BU
GREAT BRITAIN			
Jersey			
2024 November 11			
2745 60p	2 ceramic <i>Amanita sp.</i> [<i>muscaria?</i>] as decorative elements in stamp commemorating Bûche de Noel from France as a traditional Christmas food		(M) (B)

**ANIMALS; DOGS & CATS; HORSES; INSECTS; BUGS BUTTERFLIES;
MALARIA; FLOWERS & PLANTS; ORCHIDS MUSHROOMS; MARINE
LIFE; FISH; TURTLES; REPTILES SHELLS; WHALES & SEALS;
BIRDS; MINERALS MIXED BIOLOGY TOPICS**

Write for the price list of your choice

EASTERN SHORE STAMP COMPANY

P.O. BOX 204, MIDDLETOWN, DE 19709

e-mail: essc@comcast.net

Phone: (302) 563-2174

Caveat Emptor (Part 17)

2014-2015

Paul A. Mistretta

Below find the 74 sets which I have identified as illegals which were issued in 2014 and 2015. Lots of money to the printers with no service provided...



Fig. 1



Fig. 2



Fig. 3



Fig. 4

Central African Rep - MS/4d & SS <M> MS - 900F ea SF, SS - 3000F (Fig. 1)

Central African Rep - MS/4 & SS <D> MS - 900F ea SF, SS - 3000F; <M> & scouts (Fig. 2)

Chad - MS/1of4d <D & E> 1000F; Alice in Wonderland & <M>(Fig. 3)

Chad - MS/1of4d <D & E> 1000F; Bambi & <M> (Fig. 4)



Fig. 5



Fig. 6



Fig. 7



Fig. 8



Fig. 9

Chad - MS/4d & MS/2d <M> all SF 1000F (Fig. 5)

Chad - 3MS/2d, SS, 6DS <M> MS & DS 700F ea SF, SS - 2000F (Fig. 6)

Congo, Rep. - MS/4d & SS <M & E> MS - 600F eaa SF, SS - 1200F (Fig. 7)

Djibouti - MS/3d & SS <M> MS - 300F ea SF, SS - 1200F (Fig. 8)

Gabon - SS 2500F; Fleming & <M> (Fig. 9)



Fig. 10



Fig. 11



Fig. 12



Fig. 13



Fig. 14

Guinea-Bissau - MS/4d & SS <M & E> MS - 850FCFA ea SF, SS - 2800FCFA (Fig. 10)

Guinea-Bissau - MS/4d & SS <M & E> MS - 850FCFA ea SF, SS - 2800FCFA (Fig. 11)

Guinea-Bissau - MS/4d & SS <M & E> MS - 850FCFA ea SF, SS - 2400FCFA (Fig. 12)

Guinea, Republic - MS/4d & SS <M & E> MS - 2 x 10000FG + 2 x 15000FG, SS - 40000FG (Fig. 13)

Guinea, Republic - MS/4d & SS <M & E> MS - 2 x 10000FG + 2 x 15000FG, SS - 40000FG (Fig. 14)



Fig. 15



Fig. 16



Fig. 17



Fig. 18



Fig. 19

Guinea, Republic - MS/43 & SS <M & E> MS - 15000FG ea SF, SS - 40000FG (Fig. 15)

Liberia - MS/1of4d <D> \$100 [MS - \$400]; Leprechaun & <M>(Fig. 16)

Madagascar, Rep of - MS/4d & SS <M & E> MS - 2000MGA ea SF, SS - 9000MGA (Fig. 17)

Maldive Islands - MS/4d & SS <M & E> MS - Rf22 ea SF, SS - Rf70 (Fig. 18)

Mali - 2MS/4d <M> 750F ea SF (Fig.19)



Fig. 20



Fig. 21



Fig. 22



Fig. 23



Fig. 24

Mali - MS/1of2d <M> 1000F [MS - 2000F]; Owl [1/2] & <M> (Fig. 20)

Mozambique - MS/4d & SS <M & E> MS - 46MT ea SF, SS - 175MT (Fig. 21)

Mozambique - MS/1of4d <D> 46MT [MS - 184MT]; <M> in Verne's center of the earth (Fig. 22)

Niger - MS/4d & SS <M & E> MS - 750F ea SF, 2500F (Fig. 23)

Niger - MS/4d & SS <M & E> MS - 750F ea SF, 2500F (Fig. 224)



Fig. 25



Fig. 26



Fig. 27



Fig. 28

Niger - MS/4d & SS <M & E> MS - 750F ea SF, 2500F (Fig. 25)

St. Thomas & Prince - MS/1of4d <D> 25000F [MS - 100000F]; Scout & basket of <M>s (Fig. 26)

St. Thomas & Prince - MS/4d & SS <M> MS - Db2500 ea SF, SS - Db96000 [Sc#2681 & 2682] (Fig. 27)

St. Thomas & Prince - MS/4d & SS <M> MS - Db2500 ea SF, SS - Db96000 [Sc#2769 & 2789] (Fig. 28)



Fig. 30



Fig. 31



Fig. 32

Togo - MS/4d & SS <M & E> MS - 750F ea SF, 2500F (Fig. 30)

Togo - MS/4d & SS <M & E> MS - 750F ea SF, 2500F (Fig. 31)

Togo - MS/4d & SS <M & E> MS - 750F ea SF, 2500F (Fig. 32)

2015



Fig. 33

Benin - MS/3, 1SS & 3DS <M> MS – 1200F ea SF, SS – 4000F & DS 1200F ea (Fig. 33)



Fig. 34

Benin - MS/4d & SS <M & E> MS – 500F ea SF, SS – 1000F (Fig. 34)



Fig. 35

Benin - MS/2d & SS <M> MS – 750F ea SF, SS – 2000F (Fig. 35)



Fig. 36

Benin - MS/1of3d & SS <1M & 1D> <M> – 600F, <D> – 1200F, SS – 3000F (Fig. 36)



Fig. 37

Burkina Faso - 2MS/4d & SS <M> 400F, 500F, 600F & 700F ea MS (Fig. 37)



Fig. 38

Central African Republic - MS/4d & SS <M> MS – 750F ea SF, SS - 2650F (Fig. 38)



Fig. 39

Central African Republic - MS/1of4d <I> 750F [MS – 3000F] (Fig. 39)



Fig. 40

Central African Republic - MS/4d & SS <M & E> MS/4d & SS <M> MS – 750F ea SF, SS - 2650F (Fig. 40)



Fig. 41

Central African Republic - SS <D> 2650F (Fig. 41)



Fig. 42

Central African Republic - MS/4d & SS <M & E> MS – 2650F ea SF, SS – 2650F (Fig. 42)



Fig. 43

Congo, Rep. - MS/4d <M> 1500F ea SF (Fig. 43)



Fig. 44

Djibouti - MS/2d <M> 150F ea SF (Fig. 44)



Fig. 45

Ghana - MS/6d & SS <M> MS – GH¢3.5 ea SF, SS – GH¢9 (Fig. 45)



Fig. 46

Guinea-Bissau - MS/4d & SS <M & E> MS – 800FCFA ea SF, SS – 2400FCFA (Fig. 46)



Fig. 47

Guinea-Bissau - MS/4d & SS <M & E> MS – 825FCFA ea SF, SS – 3300FCFA (Fig. 47)



Fig. 48

Guinea-Bissau - MS/4d & SS <M & E> MS – 900FCFA ea SF, SS – 3300F (Fig. 48)



Fig. 49

Guinea-Bissau - 15SS <D> 750F ea SS (Fig. 49)



Fig. 50

Guinea, Republic - MS/4d & SS <M & E> MS – 1000FG ea SF, SS – 35000FG (Fig. 50)



Fig. 51

Guinea, Republic - MS/4d & SS <M & E> MS – 1000FG ea SF, SS – 35000FG (Fig. 51)



Fig. 52

Madagascar - 3SS <M & E> 6000MGA ea (Fig. 52)



Fig. 53

Fig. 54

Fig. 55

Fig. 56

Fig. 57

Fig. 58

Madagascar – MS/3of4d <D> 2000MGA ea SF; very stylized <M> shaped objects consistent with the “Alice in Wonderland” S. Dali vignettes (Fig. 53)

Mali - MS/4d & SS <M & E> MS – 600F ea SF, SS – 2000F (Fig. 54)

Maldiv Islands - MS/4d & SS <D & E> MS – 22MVR ea SF, SS – 77MVR; owls & <M> (Fig. 55)

Mozambique – MS/1of4d 66MTI; Fleming & <M> (Fig. 56)

Mozambique – 15MS/0of4d, 15 SS & 60DS <E> MS& DS – 46MT ea SF, SS – 175MT ea; This grouping has vignettes of various animals with varied upper frame wording identifying the animal featured in the 4 SFs in the sheet. Extremely small <M>s were added to the bottom selvedge, presumably to sell this massive issue to collectors of mushrooms on stamps. The <M>s are so small that they add nothing to the aesthetic of the designs. (Fig. 57)

Mozambique – MS/4d & SS <M> MS - 66MT ea SF, SF – 175MT (Fig. 58)



Fig. 59

Fig. 60

Fig. 61

Fig. 62

Fig. 63

Niger – MS/4d & SS <D & E> MS – 825F ea SF, SS – 3000F; <M> & insects (Fig.59)

Niger – se-ten MS/4d & SS <M D & E> MS – 825F ea SF, SS – 3000F; 2 SFs & SS - <D> as <M> & Scouts (Fig. 60)

Niger - MS/4d & SS <M & E> M – 825F ea SF, SS – 3000F (Fig. 61)

Sierra Leone – MS/4d & SS <M> MS - Le5500 ea SF, SS - Le220000 [Sc#3402 & 3422] (Fig. 62)

Sierra Leone – 4MS/0of4d & 4SS [at least] <E> MS – Le6000 ea SF, SS – LE24000; “World of Birds” w <M> @ LL [Sc#3465, 3482, ?, 3485, 3499 & 3502 at least] (Fig. 63)



Fig. 64

Fig. 65

Fig. 66

Fig. 67

Fig. 68

Sierra Leone – MS/4d & SS Le6500 ea SF; Fleming & <M> [Sc#3558 & 3572] (Fig. 64)

Sierra Leone – SS <E> LE26000; Scout issue, <M> added in selv [Sc# (Fig. 3582)] (Fig. 65)

Sierra Leone – SS <E> Le24000; Scout picking <M>s [Sc#3651] (Fig. 66)

Sierra Leone – MS/4d & SS <M> MS - \$12 ea SF, SS - \$40 [Sc#1820 & 1840] (Fig. 67)

Solomon Islands – MS/4d & SS <M> MS - \$12 ea SF, SS - \$40 [Sc#1894 & 1914] (Fig. 68)



Fig. 69



Fig. 70



Fig. 71



Fig. 72

St. Thomas & Prince – MS/4d & SS <M> MS – Db31000 ea SF, SS - Db96000 (Fig. 69)

St. Thomas & Prince – 6MS/0of4d <E> Db76000 ea MS; “[animal name] em foresta tropical” & <M> as minor element in selv [Sc#2877, 2978, 2887,2890, 2891, 2892, 2893, 2911 & 2920 (at least)] (Fig. 70)

St. Thomas & Prince – MS/4d & SS <M> Db19000 ea SF, SS - Db86000; <M> item in Fig. 70 set (Fig. 71)

St. Thomas & Prince – MS/1of4d & SS <D & E> Db31000 [MS – Db124000]; Scouts & <M> [Sc#2920 & 2940] (Fig. 72)



Fig. 73



Fig. 74



Fig. 75



Fig. 76

Togo - MS/4d & SS <M & E> MS – 750F ea SF, SS – 2500f (Fig. 73)

Togo - MS/4d & SS/2d <M & E> MS – 950F ea SF, SS – 1500f ea SF (Fig. 74)

Togo – SS/0of4d <E> MS - 1800F; Birds with<M> in selv (Fig. 75)

Togo – MS/1of4d & SS <D> all SFs 950F; Scout & <M> (Fig. 76)



MAMMALIA

Editor
Michael Prince, LM 68



New Issues

Scott #Denom.	Common name; Scientific name	Family name	Code
AUSTRALIA			
2024 December 9 (Canberra Stamp Show – sheet wih #5809-11)			
5811c 3 x \$1.50	Koala, <i>Phascolarctos cinereus</i>	Phascolarctidae	
2024 September 2 (Film Animals)			
5816 \$1.50	Eastern Grey Kangaroo, <i>Macropus giganteus</i>	Macropodidae	
5820 \$1.50	Domestic Pig, <i>Sus scrofa</i>	Suidae	
FAROE ISLANDS			
2024 June 24 (Four Seasons)			
858a 23k	Domestic Sheep, <i>Ovis aries</i>	Bovidae	
858d 23k	Mountain Hare, <i>Lepus timidus</i>	Leporidae	
FINLAND			
2024 May 8 (100th Running of Royal Finnhorse Races)			
1723a (€2.50)	Domestic Horse, <i>Equus caballus</i>	Equidae	
1723b (€2.50)	Domestic Horse, <i>Equus caballus</i>	Equidae	
GHANA			
2023 February 28 (Mammals)			
2967a-d 4 x 15ce	Common Chimpanzee, <i>Pan troglodytes</i>	Hominidae	
2968 30ce	Common Chimpanzee, <i>Pan troglodytes</i>	Hominidae	
2969a-d 4 x 12ce	Diana Monkey, <i>Cercopithecus diana</i>	Cercopithecidae	
2970 30ce	Diana Monkey, <i>Cercopithecus diana</i>	Cercopithecidae	
2971a-d 4 x 15ce	Leopard, <i>Panthera pardus</i>	Felidae	
2972 30ce	Leopard, <i>Panthera pardus</i>	Felidae	
2973a-d 4 x 15ce	Serval, <i>Leptailurus serval</i>	Felidae	
2974 30ce	Serval, <i>Leptailurus serval</i>	Felidae	
2023 March 13 (Mammals)			
2985a-d 4 x 15ce	Lion, <i>Panthera leo</i>	Felidae	
2986 30ce	Lion, <i>Panthera leo</i>	Felidae	
2987a-d 4 x 12ce	Caracal, <i>Caracal caracal</i>	Felidae	
2988 30ce	Caracal, <i>Caracal caracal</i>	Felidae	
2023 April 13 (Mount Kilimanjaro, Tanzania)			
2993a 15ce	Giraffe, <i>Giraffa camelopardalis</i>	Giraffidae	
2993c 15ce	African Elephant, <i>Loxodonta africana</i>	Elephantidae	
2994 30ce	Giraffe, <i>Giraffa camelopardalis</i>	Giraffidae	
2023 April 13 (Mammals)			
2995a-d 4 x 15ce	Patas Monkey, <i>Erythrocebus patas</i>	Cercopithecidae	
2996 30ce	Patas Monkey, <i>Erythrocebus patas</i>	Cercopithecidae	
2997a-d 4 x 15ce	Olive Baboon, <i>Papio anubis</i>	Cercopithecidae	
2998 30ce	Olive Baboon, <i>Papio anubis</i>	Cercopithecidae	
2023 June 2 (Mammals)			
3016a 14ce	Thomson's Gazelle, <i>Eudorcas thomsonii</i>	Bovidae	
3016b 14ce	Dama Gazelle, <i>Nanger dama ruficollis</i>	Bovidae	
3016c 14ce	Sommerring's Gazelle, <i>Nanger soemmerringii</i>	Bovidae	
3016d 14ce	Cuvier's Gazelle, <i>Gazella cuvieri</i>	Bovidae	
3016e 14ce	Rhim Gazelle, <i>Gazella leptoceros</i>	Bovidae	

GHANA (continued)

3017a	15ce	Mountain Gazelle, <i>Gazella gazella</i>	Bovidae
3017b	15ce	Goitered Gazelle, <i>Gazella subgutturosa</i>	Bovidae
3018a	14ce	Hippopotamus, <i>Hippopotamus amphibius</i>	Hippopotamidae
3018b	14ce	Pygmy Hippopotamus, <i>Hexaprotodon liberiensis</i>	Hippopotamidae
3018c	14ce	Hippopotamus, <i>Hippopotamus amphibius</i>	Hippopotamidae
3018d	14ce	Pygmy Hippopotamus, <i>Hexaprotodon liberiensis</i>	Hippopotamidae
3018e	14ce	Hippopotamus, <i>Hippopotamus amphibius</i>	Hippopotamidae
3019a	15ce	Hippopotamus, <i>Hippopotamus amphibius</i>	Hippopotamidae
3019b	15ce	Pygmy Hippopotamus, <i>Hexaprotodon liberiensis</i>	Hippopotamidae
3020a-e	5 x 14ce	Honey Badger, <i>Mellivora capensis</i>	Mustelidae
3021a-b	2 x 15ce	Honey Badger, <i>Mellivora capensis</i>	Mustelidae

2023 July 10 (Mammals)

3022a-d	4 x 15ce	Red River Hog, <i>Potamochoerus porcus</i>	Suidae
3023	30ce	Red River Hog, <i>Potamochoerus porcus</i>	Suidae

GREAT BRITAIN**2024 June 6 (Dog Breeds)**

4505	2nd (85p)	Dalmatian, <i>Canis lupus familiaris</i>	Canidae
4506	2nd (85p)	Jack Russell Terrier, <i>Canis lupus familiaris</i>	Canidae
4507	2nd (85p)	Labrador Retriever, <i>Canis lupus familiaris</i>	Canidae
4508	2nd (85p)	Border Collie, <i>Canis lupus familiaris</i>	Canidae
4509	2nd (85p)	Whippet, <i>Canis lupus familiaris</i>	Canidae
4510	1st (£1.35)	Siberian Husky, <i>Canis lupus familiaris</i>	Canidae
4511	1st (£1.35)	Chihuahua, <i>Canis lupus familiaris</i>	Canidae
4512	1st (£1.35)	Cocker Spaniel, <i>Canis lupus familiaris</i>	Canidae
4513	1st (£1.35)	Pembroke Welsh Corgi, <i>Canis lupus familiaris</i>	Canidae
4514	1st (£1.35)	Pug, <i>Canis lupus familiaris</i>	Canidae
4515a-e	2nd (85p)	Sheet of 10 values – #4503-09	
4515f-j	1st (£1.35)	Sheet of 10 values – #4510-14	

Jersey**2024 October 3 (Jersey Cow)**

2738	60p	Jersey Cow, <i>Bos taurus taurus</i>	Bovidae
2743	£2.95	Jersey Cow, <i>Bos taurus taurus</i>	Bovidae
2744	£5.00	Jersey Cow, <i>Bos taurus taurus</i>	Bovidae

GRENADA**2023 December 28**

4477a-f	Values \$1, \$2, \$3, \$4, \$5, \$6.	Giant Panda, <i>Ailuropoda melanoleuca</i>	Ursidae
4478a-b	Values \$7, \$8.	Giant Panda, <i>Ailuropoda melanoleuca</i>	Ursidae

HUNGARY**2024 June 20 (Hunting Dogs)**

4696a	230fo	Smooth-haired vizsla, <i>Canis lupus familiaris</i>	Canidae
4696b	230fo	Wire-haired Hungarian Vizsla, <i>Canis lupus familiaris</i>	Canidae
4696c	230fo + 75fo	Transylvanian Hound, <i>Canis lupus familiaris</i>	Canidae
4696d	230fo + 75fo	Hungarian Greyhound, <i>Canis lupus familiaris</i>	Canidae

NORWAY**2024 May 31 (Seal and Jellyfish)**

1993	(31k)	Harbour Seal, <i>Phoca vitulina</i>	Phocidae
------	-------	-------------------------------------	----------

SLOVENIA**2024 September 27 (Chamois)**

1601	(A €1.84)	Chamois, <i>Rupicapra rupicapra</i>	Bovidae
1602	(B €1.12)	Chamois, <i>Rupicapra rupicapra</i>	Bovidae
1603	(C €1.69)	Chamois, <i>Rupicapra rupicapra</i>	Bovidae
1604	(D €1.96)	Chamois, <i>Rupicapra rupicapra</i>	Bovidae

S. GEORGIA & S. SANDWICH ISLANDS		2024 September 30 (Stromness Whaling Station)	
694	£1.55	Antarctic Fur Seal, <i>Arctocephalus gazella</i>	Otariidae
		2024 October 30 (Protected Areas)	
704	£1.40	Antarctic Fur Seal, <i>Arctocephalus gazella</i>	Otariidae
URUGUAY		2024 September 10 (Diplomatic Relations: Uruguay and South Korea)	
2824a	35p	Jaguar, <i>Panther onca</i>	Felidae
2824b	90p	Tiger, <i>Panthera tigris</i>	Felidae

100 Years Goldau Nature Reserve and Wildlife Park

Fatal myth

The bearded vulture became extinct in the Alps and was lost for a long time, all because of a misconception. But following the release of birds hatched in zoos into the wild, it is now back although still endangered.

Killer of lambs and child predator this imposing bird of prey, with a wingspan of up to three metres, long suffered from a bad reputation. In game law dating from 1875, the bearded vulture was even categorized as a harmful species hunting and killing it was rewarded with a bounty. When this majestic bird then also ran out of sources of food, it became extinct in the Alps at the beginning of the 20th century.



Tragic misunderstanding

The bearded vulture's bad image is based on a false assumption: "Although you may sometimes see it with fur in its beak, it feeds exclusively on carrion. It actually doesn't kill live animals," explains Katrina Wenger, Director of Goldau Nature Reserve and Wildlife Park, which plays a leading role in breeding these animals. As a scavenger, it also has an important function: "Because it gets rid of animal remains, it ensures that pathogens don't spread."

Successful return to the wild

For around 100 years, the bearded vulture was lost to Switzerland, until a project to reintroduce it in 1978 brought a turnaround: to date, 260 bearded vultures hatched in zoos and breeding centers have been released, 12 of which come from Goldau Nature Reserve and Wildlife Park. In 2024, 24 birds bred in the wild in Switzerland. There are now enough birds living in Switzerland again for the animals to survive without human help. "Because bearded vultures are not fully grown until they are five to seven years old, and because each pair raises only one of its young every year, the population reproduces very slowly. Collisions with suspended cables and wires are also a problem for the animals during the breeding season," explains Wenger.

100th anniversary

Goldau Nature Reserve and Wildlife Park was founded in the landslide area around Goldau in 1925. It houses around 100 native and European wild animal species in near natural and animal friendly conditions. Managed scientifically, the park makes an important contribution towards species protection, nature conservation, education and research.

Designer and animal observer

Melanie Suter grew up near the park. As a child, she spent many afternoons there with her family: "We knew exactly where to go to watch the birds or entice the squirrels out." During her visits, she learned at an early age that bearded vultures are not hunters: "There were mountain hares in the same enclosure. We were told that they're safe from the bearded vulture because it only feeds on carrion." Designing the stamp gave the freelance illustrator an even more detailed look at the bird: "On closer inspection, I was fascinated by its beautiful plumage it's like a work of art."

Source: <https://www.wopa-plus.com/en/stamps/product/&pgid=101383>



ORNITHOLOGY

Editor

Glenn G. Mertz, BU 1455



Corrections/Updates

DJIOUTII, V73(4), page 224

Correction: On “New Birds in the Philatelic Aviary” the Chestnut-headed Tesia has the family of Cettidae—Correct of Scotocercidae.

MICRONESIA, V42(1), page 42.

Correction: A bird listed as a Common Cicadabird, with the scientific name of *Coracina tenuirostris insperatum*, a ssp; this was elevated to full bird status of Pohnpei Cicadabird, *Edolisoma insperatum*, family of Campehagidae, which adds to the number of birds that I keep track of in my spreadsheet.

PALAU, V33(1), page 27.

Update: In October, 2024 a stamp issued 3/16/1990, was listed as *Coracina tenuirostris monaca*, a ssp. With October, 2024 Updates and Changes, this subspecies was updated to a full status bird of Palau Cicadabird, with the scientific name of *Edolisoma monacha*, still in the family of Campehagidae. Another bird on a stamp increases the number of full birds on a stamp.

SAMOA, V39(4), page 182.

Update: In a set of ten stamps, issued by Samoa on 7/10/1967, one stamp was listed as a Purple Swamphen, *Porphyrio porphyrio*, in the family of Rallidae. In one of the many Updates & Changes prior to 2019, one ssp, *melanotis*, was updated to a full bird status as an Australian Swamphen, *Porphyrio melanotis*. The Scott stamp number was 743. In my copy of Clements I added it to the book, and my Spreadsheet I added the full bird species and also listed as on a stamp. Kjell Sharning went through his listing of birds listed as a Purple Stamphen, and found seven he had to list as an Australian Swamphen.

SINGAPORE. V73(3), page 157

Correction: Sc#2168, was issued 7/1/2022, not on 7/11/2022. Sc#2167 should be the same date.

VIETNAM, NORTH, V23(1), page 10.

Update: In a set of six stamps, issued 10/12/1972, a ssp, of *poliocephalus* was updated as a Gray-headed Swamphen, *Porphyrio poliocephalus*.

New Issues

Scott#	Denom	Common Name/Scientific Name	Family/Subfamily	Code
CAMBODIA				
2024 September 9 (Native Birds of Cambodia)				
2684	1,000r	Black-headed Bulbul, <i>Microtarius melanocephalos</i>	Set/4	A*
2685	2,000r	Blue-winged Pitta, <i>Pitta moluccensis</i>	Pycnonotidae	
2686	2,500r	Cambodian Laughingthrush, <i>Garrulax ferrarius</i>	Pittidae	
2687	3,000r	Racket-tailed Treepie, <i>Crysirine temia</i>	Leiotherichidae	
2688	6,500r	Asian Green Bee-eater, <i>Merops orientalis</i>	Corvidae	
			Meropidae	

CENTRAL AFRICAN REPUBLIC		2024 March 1 (Extinct Birds)	Set/4, SS/1	A*
N/A	1,000fr †Passenger Pigeon, <i>Ectopistes migratorius</i>		Columbidae	
	Label, featuring an extinct bird, no name			
N/A	1,000fr †Hesperornis, <i>Hesperornis regalis</i>		Hesperornithidae	
N/A	1,000fr †Phorusrhacos, <i>Phorusrhacos longissimus</i>		Phorusrhacidae	
	Label, featuring an extinct bird, no name			
N/A	1,000fr †Dodo, <i>Raphus cucullatus</i>		Columbidae	
N/A	3,600fr SS †Mascarene Parrot, <i>Mascarinus mascarinus</i>		Psittacidae	
In margin	†Great Auk, <i>Pinguinus impennis</i>		Alcidae	
		2024 March 1 (Birds on the Red List)	Set/4, SS/1	A*
N/A	1,000fr Semper's Warbler, <i>Leucopezia semperi</i>		Parulidae	
	Label w/bird O'ahu Alauhio, <i>Paroreomyza maculata</i>			
	(This would be a "New Bird in the Aviary" but this is not shown on a stamp)			
N/A	1,000fr Mountain Quail, <i>Ophrysia superciliosa</i>		Phasianidae	
	(Also known as Himalayan Quail)			
N/A	1,000fr Maui Nukupu'u, <i>Hemignathus affinis</i>	V74(2)	Fringillidae	
	Label w/bird †New Caledonian Lorikeet, <i>Vini diadema</i>			
N/A	1,000fr Turquoise-throated Puffleg, <i>Eriocnemis godini</i>		Trochilidae	
N/A	3,600fr SS †Glaucous Macaw, <i>Anodorhynchus glaucos</i>	V74(2)	Psittacidae	
In margin	†Jamaican Petrel, <i>Pterodroma caribbaea</i> (LL)		Procellariidae	
	(Related to Black-capped Petrel)			
	†South island Kokako, <i>Callaeas cinereus</i> (circa 1967) (RS) Callaeidae			
	(also new but not on a stamp, so will not be in "New Birds in the Aviary")			
		2024 March 1 (Owls)	Set/4, SS/1	A*
N/A	1,000fr Eurasian Eagle-Owl, <i>Bubo bubo</i>		Strigidae	
	Label w/bird, no name			
N/A	1,000fr Barn Owl, <i>Tyto alba</i>		Tytonidae	
N/A	1,000fr Barred Owl, <i>Strix varia</i>		Strigidae	
	Label, w/bird, no name			
N/A	1,000fr Boreal Owl, <i>Aegolius funereus</i>		Strigidae	
N/A	3,600fr SS Northern Saw-Whet Owl, <i>Aegolius acadicus</i>		Strigidae	
	(Also in margin on (RS))			
		2024 March 1 (Parrots)	SEt/4, SS/1	A*
	Label, w/bird Blue-Crowned Racquet-tail, <i>Prioniturus discurus</i>			
N/A	1,000fr Yellow-crested Cockatoo, <i>Cacatua sulphurea</i>		Cacatuidae	
N/A	1,000fr Dusky Parrot, <i>Pionus fuscus</i>		Psittacidae	
N/A	1,000fr Monk Parakeet, <i>Myiopsitta monachus</i>		Psittacidae	
N/A	1,000fr Seychelles Parrot, <i>Coracopsis barklyi</i>		Psittaculidae	
	Label, w/bird Long-tailed Parakeet, <i>Palaeornis malaccensis</i>			
N/A	3,600fr SS Eastern Rosella, <i>Platycercus eximius</i>		Psittaculidae	
In margin	Papuan Eclectus, <i>Eclectus polychloros</i> (LL)		Psittaculidae	
	Peach-fronted Parakeet, <i>Eupsittula aurea</i> (RS)			
		2024 March 1 (Birds of Africa)	Set/4, SS/1	A*
N/A	1,000fr Spur-winged Goose, <i>Plectropterus gambensis</i>		Anatidae	
	Label w/bird and name Egyptian Goose, <i>Alopochen aegyptiaca</i>			
N/A	1,000fr Four-banded Sandgrouse, <i>Pterocles quadricinctus</i>		Pteroclididae	
N/A	1,000fr Western Plantain-eater, <i>Crinifer piscator</i>		Musophagidae	
	Label w/bird & name Eurasian Spoonbill, <i>Platalea leucorodia</i>			
In margin	Ruppell's Griffon, <i>Gyps rueppelli</i> (RS)		Accipitridae	

CENTRAL AFRICAN REPUBLIC (Continued)**2024 March 1** (Birds of the family of Trochilidae) Set/4, SS/1 A*

- N/A 1,000fr Bronze-tailed plumeleeter, *Chalybura urochrysis* (♂) Trochilidae
 Label, w/bird & name Violet-capped Woodnymph, *Thalurania glaucopis* Trochilidae
 N/A 1,000fr Stamp has *Glaucis fraseri* of a painting by John Gould that does not depict a bird with this scientific name in any listed species in Ornithology.
 N/A 1,000fr Same species as the first listing but this features a female Label, w/bird Same unidentified as *Glaucis fraseri*.
 N/A 1,000fr White-bellied Emerald, *Chlorestes candida* Trochilidae
 N/A 3,600fr SS Middle-sized Hermit *Phaethornis intermedius* Trochilidae
 Another of John Gould's paintings. None of the thirty plus species listed as in the Hermit genus, nor subspecies has this name of Middle-sized Hermit. He listed it as a Middle-sized Hermit or the Green Hermit.
 In margin White-Bellied Mountain-Gem, *Lampornis hemileucus* Trochilidae
 White-tipped Siclebill, *Eutoxeres aquila* Trochilidae

COLOMBIA **2024 June 28** (Independence Bicentenary of Colombia) Set/12 A*

- 1648a 5000p Ruby-throated Hummingbird, *Archilochus colubris* Trochilidae
 1648b 5000p Military Macaw, *Ara militaris* Psittacidae
 1648c 5000p Cauca Guan, *Penelope perspicax* Cracidae
 1648d 5000p Santa Marta Parakeet, *Pyrrhura viridicata* Psittacidae
 1648e 5000p Scarlet-fronted Parakeet, *Psittacara wagler* V74(1) Psittacidae
 1648f 5000p Green-crowned Brilliant, *Heliodoxa jacula* Trochilidae
 1648g 5000p Humboldt Penguin, *Sphenicus humboldti* Spheniscidae
 1648h 5000p Rufous-crested Coquette, *Lophornis delattrei* Trochilidae
 1649i 5000p Cozumel Emerald, *Cyananthus forficatus* Trochilidae
 1648j 5000p Andean Condor, *Vultur gryphus* Cathartidae
 1648k 5000p Orange-winged Amazon, *Amazona amazonica* Psittacidae
 1648l 5000p Golden-Crowned Tanager, *Iridosornis rufivertex* Thraupidae

FALKLAND ISLANDS **2024 October 3** (Penguins) Set/4 A*

- C26 (78p) Macaroni Penguin, *Eudyptes chrysolophus* (Postcard) Spheniscidae
 C27 (78p) Same species (Postcard) Spheniscidae
 C28 (84p) Same species (Letter) Spheniscidae
 C29 (£1.48) Same species (Packet) Spheniscidae

FAROE ISLANDS **2024 June 24** (Four Seasons) Set/4 B*

- 858a 23kr Eurasian Oystercatcher, *Haematopus ostralegus* Haematopodidae
 858b 23kr Northern Gannet, *Morus bassanus* Sulidae
 Atlantic Puffin, *Fratercula arctica* Alcidae
 858c 23kr Black-legged Kittiwake, *Rissa tridactyla* Laridae
 858d 23kr Domesticated Duck Anatidae

GRENADA **2007 June 25** (International Polar Year) Set/6, SS/1 A*

This is an issue I missed due to catching up when I became the author in 2006.

- 3647a \$2.00 King Penguin, *Aptenodytes patagonicus* Spheniscidae
 (upper head of adult penguin w/raised head)
 3647b \$2.00 Same species of three King Penguins in distance Spheniscidae
 3647c \$2.00 Same species of an adult, head lowered Spheniscidae
 3647d \$2.00 Same species, juvenile with ball Spheniscidae
 3647e \$2.00 Same species, with wings raised Spheniscidae
 3647f \$2.00 Same species, juvenile with head raised Spheniscidae
 3648 \$6.00 King Penguin, *Aptenodytes patagonicus*, on skis Spheniscidae

GUINEA

		2024 October 2 (Birds of China) Set/4		A*
N/A	15,000fr	Brown Wood-Owl, <i>Strix leptogrammica</i>	Strigidae	
N/A	15,000fr	Chinese Sparrowhawk, <i>Tachyspiza soloensis</i>	Accipitridae	
N/A	15,000fr	Mandarin Duck, <i>Aix galericulata</i>	Anatidae	
N/A	15,000fr	Himalayan Griffon, <i>Gyps himalayensis</i>	Accipitridae	
		2024 March 7 (Penguins)		A*
N/A	12,000fr	Adelie Penguin, <i>Pygoscelis adeliae</i> (Adult & chick)	Spheniscidae	
N/A	12,000fr	Same species, two adults	Spheniscidae	
N/A	12,000fr	Razorbill, <i>Alca Torda</i>	Alcidae	
N/A	12,000fr	Southern Rockhopper Penguin, <i>Eudyptes chrysocome</i>	Spheniscidae	
N/A	12,000fr	Adelie Penguin, <i>Pygoscelis adeliae</i>	Spheniscidae	
		2024 March 7 (Parrots)		A*
N/A	12,000fr	Blue-and-yellow Macaw, <i>Ara ararauna</i>	Psittacidae	
N/A	12,000fr	Glossy Black-Cockatoo, <i>Calyptorhynchus lathami</i>	Cacatuidae	
N/A	12,000fr	Turquoise-fronted Amazon, <i>Amazona aestiva</i>	Psittacidae	
N/A	12,000fr	Cuban Amazon, <i>Amazona leucocephala</i> (RS)	Psittacidae	
		Sun Parakeet, <i>Aratinga solstitialis</i> (LS)	Psittacidae	
In margin	Same species, two perching on branch		Psittacidae	
		2024 March 7 (Owls)		A*
N/A	12,000fr	Barn Owl, <i>Tyto alba</i>	Tytonidae	
N/A	12,000fr	Little Owl, <i>Athene noctua</i>	Strigidae	
N/A	12,000fr	Spotted Eagle-Owl, <i>Bubo africanus</i>	Strigidae	
N/A	12,000fr	Tawny Owl, <i>Strix aluco</i>	Strigidae	
N/A	12,000fr	Great Gray Owl, <i>Bubo virginianus</i>	Strigidae	
		2024 March 7 Pigeons)		A*
N/A	8,500fr	Spotted Dove, <i>Spilopelia chinensis</i>	Columbidae	
N/A	8,500fr	Domesticated Pigeon, <i>Columba livia</i>	Columbidae	
N/A	8,500fr	Domesticated Pigeon, <i>Columba livia</i>	Columbidae	
N/A	8,500fr	Pink-necked Green-Pigeon, <i>Treron vernans</i>	Columbidae	
N/A	8,500fr	Pink-necked Green-Pigeon, <i>Treron vernans</i>	Columbidae	
N/A	8,500fr	Green Imperial Pigeon, <i>Ducula aenea</i>	Columbidae	
		2024 March 7 (Lighthouses & Birds)		A*
N/A	8,500fr	Black-browed Albatross, <i>Thalassarche melanophris</i>	Diomedidae	
N/A	8,500fr	White-tailed Tropicbird, <i>Phaethon lepturus</i>	Phaethontidae	
N/A	8,500fr	Northern Royal Albatross, <i>Diomedea sanfordi</i>	Diomedidae	
N/A	52,000fr SS#1	Great Shearwater, <i>Ardenna gravis</i>	Procellariidae	
N/A	52,000fr SS#2	Northern Gannet, <i>Morus bassanus</i>	Sulidae	
In margin	Same species		Sulidae	
		2024 March 7 (Owls)		A*
N/A	8,500fr	Great Horned Owl, <i>Bubo virginianus</i>	Strigidae	
N/A	8,500fr	Eurasian Eagle-Owl, <i>Bubo bubo</i>	Strigidae	
N/A	8,500fr	Long-eared Owl, <i>Asio otus</i>	Strigidae	
N/A	8,500fr	Tawny Owl, <i>Strix aluco</i>	Strigidae	
N/A	8,500fr	Spectacled Owl, <i>Pulsatrix perspicillata</i>	Strigidae	
N/A	8,500fr	Northern Saw-Whet Owl, <i>Aegolius acadicus</i>	Strigidae	
N/A	52,000fr SS#1	Spotted Owl, <i>Strix occidentalis</i>	Strigidae	
In margin	Northern Hawk-Owl, <i>Surnia ulula</i>		Strigidae	
N/A	52,000fr SS#2	Snowy Owl, <i>Bubo scandiacus</i>	Strigidae	
In margin	Barn Owl, <i>Tyto alba</i>		Tytonidae	

GUINEA (continued)

			2024 March 7 (Parrots)	Set/6, 2xSS	A*
N/A	8,500fr	Blue-and-yellow Macaw, <i>Ara ararauna</i>		Psittacidae	
N/A	8,500fr	Rainbow Lorikeet, <i>Trichoglossus moluccanus</i>		Psittaculidae	
N/A	8,500fr	Scarlet Macaw, <i>Ara macao</i>		Psittacidae	
N/A	8,500fr	Sulphur-crested Cockatoo, <i>Cacatua galerita</i>		Cacatuidae	
N/A	8,500fr	Same species		Cacatuidae	
N/A	8,500fr	Gray Parrot, <i>Psittacus erithacus</i>		Psittacidae	
N/A	52,000fr SS#1	Collared Lory, <i>Vini solitaria</i>		Psittaculidae	
In margin		Sulphur-crested Cockatoo, <i>Cacatua galerita</i>		Cacatuidae	
N/A	52,000fr SS#2	Ground Parrot, <i>Pezoporus wallicus</i>		Psittaculidae	
In margin		Scarlet Macaw, <i>Ara macao</i>		Psittacidae	
			2024 March 7 (Pigeons)	Set/6, 2xSS	A*
N/A	8,500fr	Yellow-eyed Pigeon, <i>Columba eversmanni</i>		Columbidae	
N/A	8,500fr	Barred Cuckoo-Dove, <i>Macropygia unchall</i>		Columbidae	
N/A	8,500fr	Laughing Dove, <i>Spilopelia senegalensis cambayensis</i> (ssp)		Columbidae	
N/A	8,500fr	Nicobar Pigeon, <i>Caloenas nicobarica</i>		Columbidae	
N/A	8,500fr	Pied Imperial Pigeon, <i>Ducula bicolor</i>		Columbidae	
N/A	8,500fr	Spotted Dove, <i>Spilopelia chinensis tigrine</i> (ssp)		Columbidae	
N/A	52,000fr SS#1	Asian Emerald Dove, <i>Chalcophaps indica</i>		Columbidae	
In margin		Laughing Dove, <i>Spilopelia senegalensis cambayensis</i> (LL)		Columbidae	
		Thick-billed Green-Pigeon, <i>Treron curvirostra</i>		Columbidae	
N/A	52,000fr SS#2	Yellow-footed Green-Pigeon, <i>Treron phoenicopterus</i>		Columbidae	
In margin		Common Wood-Pigeon, <i>Columba palumbus</i> (RS)		Columbidae	
		Nicobar Pigeon, <i>Caloenas nicobarica</i> (LL)		Columbidae	
			2024 March 7 (Kingfishers)	Set/6, 2xSS	A*
N/A	8,500fr	Dwarf Kingfisher, <i>Ispidina picta</i>		Alcedinidae	
N/A	8,500fr	Blyth's Kingfisher, <i>Alcedo hercules</i>		Alcedinidae	
N/A	8,500fr	Biak Paradise-kingfisher, <i>Tanysiptera riedelii</i> V74(2)		Alcedinidae	
N/A	8,500fr	Common Paradise-Kingfisher, <i>Tanysiptera galatea</i>		Alcedinidae	
N/A	8,500fr	Ultramarine Kingfisher, <i>Todiramphus leucopygius</i>		Alcedinidae	
N/A	8,500fr	Forest Kingfisher, <i>Todiramphus macleayii</i>		Alcedinidae	
N/A	52,000fr SS#1	Javan Kingfisher, <i>Halcyon cyanoventris</i>		Alcedinidae	
N/A	52,000fr SS#2	Blue-eared Kingfisher, <i>Alcedo meninting</i>		Alcedinidae	
			GUINEA-BISSAU	2023 December 22 (Birds)	Set/12, 12xSS
N/A	600fr	Cinereous Owl, <i>Strix sartorii</i> V73(4)		Strigidae	A*
N/A	2000fr SS	Same species		Strigidae	
In margin		Great Gray Owl, <i>Strix nebulosa</i>		Strigidae	
N/A	600fr	Blue-eared Kingfisher, <i>Alcedo meninting</i>		Alcedinidae	
N/A	2000fr SS	Same species on stamp and in the margin		Alcedinidae	
N/A	600fr	Velvet-Purple Coronet, <i>Boissonneaura jardini</i>		Trochilidae	
N/A	2000fr SS	Same species (Stamp has Genus of <i>Panopites</i>)		Trochilidae	
In margin		Scissor-tailed Hummingbird, <i>Hylonympa macrocerca</i>		Trochilidae	
N/A	600fr	Trumpeter Hornbill, <i>Bycanistes bucinator</i>		Bucerotidae	
N/A	2000fr SS	Same species on stamp		Bucerotidae	
In margin		Knobbed Hornbill, <i>Rhyticeros cassidix</i>		Bucerotidae	
N/A	600fr	Chestnut-headed Bee-eater, <i>Merops leschenaulti</i>		Meropidae	
N/A	2000fr SS	Same species on stamp		Meropidae	
In margin		Blue-cheeked Bee-eater, <i>Merops persicus</i>		Meropidae	

GUINEA-BISSAU (continued)

N/A	600fr	European Roller, <i>Coracias garrulus</i>	Coraciidae		
N/A	2000fr SS	Same species and in margin	Coraciidae		
N/A	600fr	Philippine Eagle, <i>Pithecophaga jefferyi</i>	Accipitridae		
N/A	2000fr SS	Same species on stamp	Accipitridae		
In margin		Ayres's Hawk-Eagle, <i>Hieraaetus ayresii</i>	Accipitridae		
N/A	600fr	Chestnut-eared Aracari, <i>Pteroglossus castanotis</i>	Ramphastidae		
N/A	2000fr SS	Same species on stamp	Ramphastidae		
In margin		Channel-billed Toucan, <i>Ramphastos vitellinus</i>	Ramphastidae		
N/A	600fr	Stephanie's Astrapia, <i>Astrapia stephaniae</i>	Paradisaeidae		
N/A	2000fr SS	Same species on stamp	Paradisaeidae		
In margin		Black Sicklebill, <i>Epimachus fastosus</i>	Paradisaeidae		
N/A	600fr	Turkey Vulture, <i>Cathartes aura</i>	Accipitridae		
N/A	2000fr SS	Same specie on stamp	Accipitridae		
In margin		Cinereous Vulture, <i>Aegyptius monachus</i>	Accipitridae		
N/A	600fr	Fulvous Whistling-Duck, <i>Dendrocygna bicolor</i>	Anatidae		
N/A	2000fr SS	Same species on stamp	Anatidae		
In margin		Lesser Whistling-Duck, <i>Dendrocygna javanica</i>	Anatidae		
N/A	600fr	Lesser Black-backed Gull, <i>Larus fuscus</i>	Laridae		
N/A	2000fr SS	Same species on stamp	Laridae		
In margin		Black-legged Kittiwake, <i>Rissa tridactyla</i>	Laridae		
2023 December 22 (Raptors)			Set/6		A*
N/A	600fr	White-backed Vulture, <i>Gyps africanus</i>	Accipitridae		
N/A	600fr	Red Kite, <i>Milvus milvus</i>	Accipitridae		
N/A	600fr	Yellow-billed Kite, <i>Milvus migrans aegyptius</i> (A ssp of Black Kite)	Accipitridae		
(IOC listed this as full species - why Clements has yet to upgrade to this full species status. It appears IOC and Clements/BirdLife fail to agree puzzled me more than how this and many other examples don't make sense)					
N/A	600fr	Marsh Owl, <i>Asio capensis</i>	Strigidae		
N/A	600fr	Long-crested Eagle, <i>Lophaetus occipitalis</i>	Accipitridae		
N/A	600fr	Bateleur, <i>Terathopius ecaudatus</i>	Accipitridae		
2023 December 22 (Owls)			Set/6		A*
N/A	600fr	Eastern Screech-Owl, <i>Megascops asio</i>	Strigidae		
N/A	600fr	Great Gray Owl, <i>Strix nebulosa</i>	Strigidae		
N/A	600fr	Mountain Scops-Owl, <i>Otus spilocephalus</i>	Strigidae		
N/A	600fr	Sooty Owl, <i>Tyto tenebricosa</i>	Tytonidae		
N/A	600fr	Snowy Owl, <i>Bubo scandiacus</i>	Strigidae		
N/A	600fr	Spectacled Owl, <i>Pulsatrix perspicillata</i>	Strigidae		
2024 December 22 (Birds and their eggs)			Set/8		A*
N/A	600fr	Common Chaffinch, <i>Fringilla coelebs</i>	Fringillidae		
N/A	600fr	Eurasian Curlew, <i>Numenius arquata</i>	Scolopacidae		
N/A	600fr	Eurasian Kestrel, <i>Falco tinnunculus</i>	Falconidae		
N/A	600fr	Common Gull, <i>Larus canus canua</i> (ssp)	Laridae		
N/A	600fr	Common Murra, <i>Uria aalge albionis</i> (ssp) (ssp previously on Guinea-Bissau on 8/11/2023)	Alcidae		
N/A	600fr	Northern Lapwing, <i>Vanellus vanellus</i>	Charadriidae		
N/A	600fr	Yellowhammer, <i>Emberiza citrinella</i>	Emberizidae		
N/A	600fr	Phainopepla, <i>Phainopepla nitens</i> (Previously shown on a SS of Guinea-Bissau 3/15/2013)	Ptilonotidae	V74(2)	

GUINEA-BISSAU (continued)

		2023 December 22 (Birds in Art)		Set/8	A*
N/A	450fr	White-tufted Sunbeam, <i>Aglaeactis castelnaudii</i>	Trochilidae		
N/A	450fr	Black-crested Titmouse, <i>Baeolophus atricristatus</i> (new)	Paridae		
N/A	450fr	Ring-necked Pheasant, <i>Phasianus colchicus</i>	Phasianidae		
N/A	450fr	European Starling, <i>Sturnis vulgaris</i> (LS)	Sturnidae		
		Lesser Spotted Woodpecker, <i>Dryobates minor</i> (RS)	Picidae		
N/A	450fr	American Bittern, <i>Botaurus lentiginosus</i> (LS)	Ardeidae		
		†Columbian Grebe, <i>Podiceps andinus</i> (RS) V74(2)	Podicipedidae		
N/A	450fr	Common Crane, <i>Grus grus</i> (LS)	Gruidae		
		Black-crowned Night-Heron, <i>Nycticorax nycticorax</i>	Ardeidae		
N/A	450fr	Southern Cassowary, <i>Casuarius casuarius</i> (LS)	Casuariidae		
		Barbary Partridge, <i>Alectoris barbara</i> (RS)	Phasianidae		
N/A	450fr	Long-tailed Duck, <i>Clangula hyemalis</i> (LS)	Anatidae		
		Black Guillemot, <i>Cephus grylle</i> (RS)	Alcidae		
		2023 December 22 (Owls)		Set/8	A*
N/A	450fr	Northern Hawk-Owl, <i>Surnia ulula</i>	Strigidae		
		(Stamp has species name of <i>funereus</i> – not listed by Clements Checklist – it is another scientific name for the Northern Hawk-Owl)			
N/A	450fr	Great Horned Owl, <i>Bubo virginianus</i>	Strigidae		
N/A	450fr	Barn Owl, <i>Tyto alba</i>	Tytonidae		
N/A	450fr	Great Horned Owl, <i>Bubo virginianus</i> (LS)	Strigidae		
		Long-eared Owl, <i>Asio otus</i> (RS)	Strigidae		
N/A	450fr	Barred Owl, <i>Strix varia</i>	Strigidae		
N/A	450fr	Little Owl, <i>Athene noctua</i>	Strigidae		
N/A	450fr	Northern Hawk-Owl, <i>Surnia ulula</i>	Strigidae		
		(See comments for first listing regarding <i>funereus</i>)			
N/A	450fr	Northern Saw-Whet Owl, <i>Aegolius acadicus</i>	Strigidae		
		2024 March 28 (European Birds)		Set/3, 2xSS	A*
N/A	1200fr	Gray Heron, <i>Ardea cinerea</i>	Ardeidae		
N/A	1200fr	Hooded Crow, <i>Corvus cornix</i>	Corvidae		
N/A	1200fr	Eurasian Goshawk, <i>Astur gentilis</i>	Accipitridae		
		(Genus name of <i>Astur</i> was recently changed from <i>Accipiter</i>)			
In margin		Common Merganser, <i>Mergus merganser</i> (M&F)	Anatidae		
N/A	3600fr SS#1	Hooded Grebe, <i>Podiceps auritus</i>	Podicipedidae		
In margin		Northern Lapwing, <i>Vanellus vanellus</i>	Charadriidae		
N/A	3600fr SS#2	Tundra Swan, <i>Cygnus columbianus</i>	Anatidae		
In margin		Dalmatian Pelican, <i>Pelecanus crispus</i>	Pelecanidae		
		2024 March 28 (Asian Birds)		Set/3, 2xSS	A*
N/A	1200fr	Chestnut-eared Bunting, <i>Emberiza fucata</i>	Emberizidae		
N/A	1200fr	Azure-breasted Pitta, <i>Pitta steerii</i>	Pittidae		
N/A	1200fr	Red-headed Bullfinch, <i>Pyrrhula erythrocephala</i> V74(2)	Fringillidae		
In margin		Yellow-billed Blue-Magpie, <i>Urocissa flavirostris</i>	Corvidae		
N/A	3600fr SS#1	Black-crowned Pitta, <i>Erythropitta ussheri</i> V74(2)	Pittidae		
In margin		Black-rumped Magpie, <i>Pica bottanensis</i>	Corvidae		
N/A	3600fr SS#2	Red-billed Blue-Magpie, <i>Urocissa erythrorhyncha</i>	Corvidae		
In margin		Indian Pitta, <i>Pitta brachyura</i>	Corvidae		
		2024 March 28 (Owls)		Set/3, 2xSS	A*
N/A	1200fr	Tawny Owl, <i>Strix aluco</i>	Strigidae		
N/A	1200fr	Boreal Owl, <i>Aegolius funereus</i>	Strigidae		

GUINEA-BISSAU (continued)

N/A	1200fr	Little Owl, <i>Athene noctua</i>	Strigidae	
N/A	3600fr SS#1	Western Barn Owl, <i>Tyto alba guttata</i> (ssp)	Tytonidae	
In margin		Eastern Screech-Owl, <i>Megascops asio</i>	Strigidae	
N/A	3600fr SS#2	Ural Owl, <i>Strix uralensis</i>	Strigidae	
In margin		Western Barn Owl, <i>Tyto alba guttata</i> (ssp)	Tytonidae	
		2024 March 28 (Cranes)	Set/3, 2xSS	A*
N/A	1200fr	Brolga, <i>Antigone rubricunda</i>	Gruidae	
N/A	1200fr	Sandhill Crane, <i>Antigone canadensis</i>	Gruidae	
N/A	1200fr	Blue Crane, <i>Anthropoides paradiseus</i>	Gruidae	
N/A	3600fr SS#1	Hooded Crane, <i>Grus monacha</i>	Gruidae	
N/A	3600fr SS#2	Wattled Crane, <i>Bugerus carunculatus</i>	Gruidae	
		LIBERIA		
		2024 January 5 (Pheasants)	Set/3, 2xSS	A*
N/A	\$400	Blood Pheasant, <i>Ithaginis cruentus</i>	Phasianidae	
N/A	\$400	Bulwer's Pheasant, <i>Lophura bulweri</i>	Phasianidae	
N/A	\$400	Cabot's Tragopan, <i>Tragopan caboti</i>	Phasianidae	
In margin		Western Tragopan, <i>Tragopan melanocephalus</i>	Phasianidae	
N/A	\$1200 SS#1	Copper Pheasant, <i>Symaticus soemmerringii scintillans</i> (ssp)	Phasianidae	
In margin		Blue-eared Pheasant, <i>Crossoptilon auritum</i> (above stamp)	Phasianidae	
N/A	\$1200 SS#2	Cheer Pheasant, <i>Catreus wallichii</i>	Phasianidae	
In margin		Temminck's Tragopan, <i>Tragopan temminckii</i> (over stamp)	Phasianidae	
		2024 January 5 (Ducks)	Set/3, 2xSS	A*
N/A	\$400	Northern Shoveler, <i>Spatula clypeata</i>	Anatidae	
N/A	\$400	Common Goldeneye, <i>Bucephala clangula</i>	Anatidae	
N/A	\$400	Tufted Duck, <i>Aythya fuligula</i>	Anatidae	
In margin		Greater Scaup, <i>Aythya marila</i> (UL)	Anatidae	
		Western Duck, <i>Fuligula dispar</i> (LL)	Anatidae	
		(Also known as <i>Anas dispar</i>)		
N/A	\$1200 SS#1	Ruddy Shelduck, <i>Tadorna ferruginea</i>	Anatidae	
In margin		Common Shelduck, <i>Tadorna tadorna</i>	Anatidae	
N/A	\$1200 SS#2	Common Shelduck, <i>Tadorna tadorna</i>	Anatidae	
In margin		Mallard, <i>Anas platyrhynchos</i>	Anatidae	
		2024 January 5 (Tropical birds-Pittas)	Set/3, 2xSS	A*
N/A	\$400	Ivory-breasted Pitta, <i>Pitta maxima</i> V 74(2)	Pittidae	
N/A	\$400	Eared Pitta, <i>Hydrornis phayrei</i> V74(2)	Pittidae	
N/A	\$400	Blue-rumped Pitta, <i>Hydrornis soror</i> V74(2)	Pittidae	
In margin		Western Hooded Pitta, <i>Pitta sordida cucullata</i> (ssp)	Pittidae	
		(Previously shown on a St. Thomas issue of SS of 10/15/2021) and on a Guinea-Bissau stamp)		
N/A	\$1200 SS#1	South Moluccan Pitta, <i>Erythropitta rubrinucha</i> V74(2)	Pittidae	
In margin		Sulawesi Pitta, <i>Erythropitta celebensis</i>	Pittidae	
		(now in a ssp group)		
N/A	\$1200 SS#2	Whiskered Pitta, <i>Erythropitta kochi</i>	Pittidae	
In margin		Blue-winged Pitta, <i>Pitta moluccensis</i>	Pittidae	
		2024 January 5 (Vultures)	Set/3, 2xSS	A*
N/A	\$400	Bearded Vulture, <i>Gypaetus barbatus</i>	Accipitridae	
		(Nickname is Lammergeier)		
N/A	\$400	Cinereous Vulture, <i>Aegypius monachus</i>	Accipitridae	
N/A	\$400	Lesser Yellow-headed Vulture, <i>Cathartes burrovianus</i>	Cathartidae	

LIBERIA (continued)

N/A	\$1200 SS#1	Bearded Vulture, <i>Gypaetus barbatus</i>	Accipitridae	
In margin		California Condor, <i>Gymnogyps californianus</i>	Cathartidae	
N/A	\$1200 SS#2	Bearded Vulture, <i>Gypaetus barbatus</i>	Accipitridae	
In margin		Same species	Accipitridae	
2024 January 5 (Penguins)				
N/A	\$400	Gentoo Penguin, <i>Pygoscelis papua</i>	Spheniscidae	A*
N/A	\$400	Adelie Penguin, <i>Pygoscelis adeliae</i>	Spheniscidae	
N/A	\$400	Little Penguin, <i>Eudyptula minor</i>	Spheniscidae	
N/A	\$1200 SS#1	Macaroni Penguin, <i>Eudyptes chrysolophus</i>	Spheniscidae	
N/A	\$1200 SS#2	King Penguin, <i>Aptenodytes patagonicus</i>	Spheniscidae	
In margin		Same species	Spheniscidae	
2024 January 5 (Woodpeckers)				
N/A	\$400	Northern Flicker, <i>Colaptes auratus</i>	Picidae	A*
N/A	\$400	White-bellied Woodpecker, <i>Dryocopus javensis richardsi</i> (ssp)	Picidae	
N/A	\$400	Lesser Spotted Woodpecker, <i>Dryobates minor</i>	Picidae	
N/A	\$1200 SS#1	Stripe-cheeked Woodpecker, <i>Piculus collopterus</i> V74(2)	Picidae	
In margin		White-winged Woodpecker, <i>Dendrocopos leucopterus</i> (♂ & ♀)	Picidae	
N/A	\$1200 SS#2	Eurasian Wryneck, <i>Jynx torquilla</i>	Picidae	
In margin		White-backed Woodpecker, <i>Dendrocopos leucotus</i>	Picidae	
(Sheet has <i>Picus leuconotus</i> , which was original species name, but was recently changed)				

LITHUANIA**2022 September 16** Single A*1206 €0.85 Eurasian Hoopoe, *Upupa epops* Upupidae**SIERRA LEONE****2024 February 12 (Seabirds)** Set/6, 2xSS A*

N/A	23Le	Razorbill, <i>Alca torda</i>	Alcidae	
N/A	23Le	Black-legged Kittiwake, <i>Rissa tridactyla</i>	Laridae	
N/A	23Le	Dovekie, <i>Alle alle</i>	Alcidae	
N/A	23Le	Thick-billed Murre, <i>Uria lomvia</i>	Alcidae	
N/A	23Le	Atlantic Puffin, <i>Fratercula arctica</i>	Alcidae	
N/A	23Le	†Great Auk, <i>Pinguinus impennis</i>	Alcidae	
N/A	135Le SS#1	†Great Auk, <i>Pinguinus impennis</i>	Alcidae	
N/A	135Le SS#2	Razorbill, <i>Alca torda</i>	Alcidae	

2024 February 12 (Tropical Birds) Set/6, 2xSS A*

N/A	23Le	White-bearded Manakin, <i>Manacus manacus</i> V74/(2)	Pipridae	
N/A	23Le	Rufous-browed Peppershrike, <i>Cyclarhis gujanensis</i>	Vireonidae	
N/A	23Le	Blue-winged Mountain-Tanager, <i>Anisognathus somptuosus</i>	Thraupidae	
N/A	23Le	Swallow-winged Puffbird, <i>Chelidoptera tenebrosa</i>	Bucconidae	
N/A	23Le	Helmeted Manakin, <i>Chiroxiphia galeata</i>	Pipridae	
N/A	23Le	Black-backed Tanager, <i>Stilpnia peruviana</i>	Thraupidae	
N/A	135Le SS #1	Spotted Puffbird, <i>Bucco tamatia</i>	Bucconidae	
In margin		Kinglet Manakin, <i>Machaeropterus regulus</i>	Pipridae	
(The male on UR, female LR- previously shown on a 1982 Gaunay issue)				
		Surucua Trogon, <i>Trogon surrucura</i> (LS)	Trogonidae	
N/A	135Le SS#2	Long-billed Wren, <i>Cantorchilus longirostre</i> V74(2)	Troglodytidae	
In margin		Masked Crimson Tanager, <i>Ramphocelus nigrogularis</i>	Thraupidae (RS)	

2024 February 12 (Woodpeckers) Set/6, 2xSS A*

N/A	23Le	Helmeted Woodpecker, <i>Celeus galeatus</i>	Picidae	
N/A	23Le	Syrian Woodpecker, <i>Dendrocopos syriacus</i>	Picidae	
N/A	23Le	Acorn Woodpecker, <i>Melanerpes formicivorus</i>	Picidae	

SIERRA LEONE (continued)

N/A	23Le	Lesser Spotted Woodpecker, <i>Dryobates minor</i>	Picidae	
N/A	23Le	White-backed Woodpecker, <i>Dendrocopos leucotos</i>	Picidae	
N/A	23Le	Iberian Green Woodpecker, <i>Picus sharpei</i> V74(2)	Picidae	
N/A	135Le SS#1	Lesser Spotted Woodpecker, <i>Dryobates minor</i>	Picidae	
N/A	135Le SS#2	Crimson Winged Woodpecker, <i>Picus puniceus</i> V74(2)	Picidae	
		2024 February 12 (Kingfishers)	Set/6, 2xSS	A*
N/A	23Le	Brown-headed Paradise-Kingfisher, <i>Tanysiptera danae</i>	Alcedinidae	
N/A	23Le	Melanesian Kingfisher, <i>Todiramphus tristrami</i>	Alcedinidae	
N/A	23Le	Blue-black Kingfisher, <i>Todiramphus nigrocyaneus</i> V74(2)	Alcedinidae	
N/A	23Le	Red-breasted Paradise-Kingfisher, <i>Tanysiptera nympha</i> V74(2)	Alcedinidae	
N/A	23Le	Common Kingfisher, <i>Alcedo atthis</i>	Alcedinidae	
N/A	23Le	Rufous-bellied Kookaburra, <i>Dacelo gaudichaud</i>	Alcedinidae	
N/A	135Le SS#1	Belted Kingfisher, <i>Megaceryle alcyon</i>	Alcedinidae	
N/A	135Le SS#2	Red-breasted Paradise-Kingfisher, <i>Tanysiptera nympha</i>	Alcedinidae	
		2024 February 12 (Tits)	Set/6, 2xSS	A*
N/A	23Le	African Blue Tit, <i>Cyanistes teneriffae</i>	Paridae	
N/A	23Le	Great Tit, <i>Parus major</i> (UR)	Paridae	
		Marsh Tit, <i>Poecile palustris</i> (LL)	Paridae	
N/A	23Le	Crested Tit, <i>Lophophanes cristatus</i>	Paridae	
N/A	23Le	Coal Tit, <i>Periparus ater atlas</i> (ssp)	Paridae	
N/A	23Le	African Blue Tit, <i>Cyanistes teneriffae</i>	Paridae	
N/A	23Le	Great Tit, <i>Parus major</i>	Paridae	
N/A	135Le SS#1	Turkestan Tit, <i>Parus major bokharensis</i> (ssp)	Paridae	
		(Lumped in with Great Tit)		
N/A	135Le SS#2	African Blue Tit, <i>Cyanistes teneriffae</i>	Paridae	
		2024 February 12 (Fruits & Birds)	Set/6, 2xSS	A*
N/A	23Le	Crested Finchbill, <i>Spizixos canifrons</i> V74(2)	Pycnonotidae	
N/A	23Le	Chestnut Thrush, <i>Turdus rubrocanus</i> V74(2)	Turdidae	
N/A	23Le	Spotted Laughingthrush, <i>Ianthocincla ocellata</i>	Leiothrichidae	
		(Previously shown in margin on a Guinea-Bissau on 12/20/2022)		
N/A	23Le	Dusky Thrush, <i>Turdus eunomus</i>	Turdidae	
N/A	23Le	Rufous-vented Laughingthrush, <i>Pterorhinus gularis</i> V74(2)	Leiothrichidae	
N/A	23Le	Striped Laughingthrush, <i>Trochalopteron virgatum</i> V74(2)	Leiothrichidae	
N/A	135Le SS#2	Chestnut-bellied Rock-thrush, <i>Monticola rufiventris</i> V74(2)	Turdidae	
In margin		Spotted Laughingthrush, <i>Ianthocincla ocellata</i>	Leiothrichidae	
N/A	135Le SS#1	Rusty Laughingthrush, <i>Pterorhinus poecilorhynchus</i>	Leiothrichidae	
In margin		Dusky thrush, <i>Turdus eunomus</i>	Turdidae	
TOGO		2024 April 25 (Owls)	Set/4, 2xSS	A*
N/A	1,000fr	Long-eared Owl, <i>Asio otus</i>	Strigidae	
N/A	1,000fr	Pacific Pygmy-Owl, <i>Glaucidium californicum</i>	Strigidae	
N/A	1,000fr	Great Horned Owl, <i>Bubo virginianus</i>	Strigidae	
N/A	1,000fr	Snowy Owl, <i>Bubo scandiacus</i>	Strigidae	
In margin		Tawny Owl, <i>Strix aluco</i>	Strigidae	
N/A	3,600 SS#1	Same species	Strigidae	
N/A	3,600 SS#2	Little Owl, <i>Athene noctua</i>	Strigidae	
		2024 April 25 (Lorikeets & Lories)	Set/4, 2xSS	A*
N/A	1,000fr	Red-collared Lorikeet, <i>Trichoglossus rubritorquis</i>	Psittaculidae	
N/A	1,000fr	Violet-necked Lory, <i>Trichoglossus squamatus</i>	Psittaculidae	

TOGO (continued)

N/A	1,000fr	Scaly-breasted Lorikeet, <i>Trichoglossus chlorolepidotus</i>	Psittaculidae	
N/A	1,000fr	Olive-headed Lorikeet, <i>Trichoglossus euteles</i>	Psittaculidae	
N/A	3,600fr	SS#1 Palm Lorikeet, <i>Vini palmarum</i>	Psittaculidae	
In margin		Red-chinned Lorikeet, <i>Vini rubrigularis</i>	Psittaculidae	
N/A	3,600fr	SS#2 Sunset Lorikeet, <i>Trichoglossus forsteni</i>	Psittaculidae	
		(Chuck Braun says it's a ssp, but it was elevated to full status species)		
In margin		Red-and-blue Lory, <i>Trichoglossus histrio challenger</i> (ssp)	V74(2) Psittaculidae	
		Red-and-blue Lory, <i>Trichoglossus histrio histrio</i> (ssp)	V74(2) Psittaculidae	
		2024 April 25 (Kingfishers)	Set/4,2xSS	A*
N/A	1,000fr	Yellow-billed Kingfisher, <i>Syma torotoro</i>	Alcedinidae	
N/A	1,000fr	Little Paradise-Kingfisher, <i>Tanysepta hydrocharis</i>	V74(2) Alcedinidae	
N/A	1,000fr	Azure Kingfisher, <i>Ceyx azureus</i> (UL)	Alcedinidae	
		Half-collared Kingfisher, <i>Alcedo semitorquata</i> (LR)	Alcedinidae	
N/A	1,000fr	Small Blue Kingfisher, <i>Alcedo caeruleascens</i>	Alcedinidae	
In margin		Malachite Kingfisher, <i>Corythornis cristatus thomensis</i> (ssp)	Alcedinidae (UR)	
N/A	3,600fr	SS#1 Azure Kingfisher, <i>Ceyx azureus</i>	Alcedinidae	
In margin		Sacred Kingfisher, <i>Todiramphus sanctus</i> (LL)	Alcedinidae	
		Red-backed Kingfisher, <i>Todiramphus pyrrhopygius</i> (UR)	Alcedinidae	
		Little Kingfisher, <i>Halcyon smyrnensis</i> (RS)	Alcedinidae	
N/A	3,600fr	SS#2 Belted Kingfisher, <i>Megaceryle alcyon</i>	Alcedinidae	
In margin		White-throated Kingfisher, <i>Halcyon smyrnensis</i> (RS)	Alcedinidae	
		2024 April 25 (Pelicans)	Set/4, 2xSS	A*
N/A	1,000fr	Brown Pelican, <i>Pelecanus occidentalis</i>	Pelecanidae	
N/A	1,000fr	Great White Pelican, <i>Pelecanus onocrotalus</i>	Pelecanidae	
N/A	1,000fr	Peruvian Pelican, <i>Pelecanus thagus</i>	Pelecanidae	
N/A	1,000fr	American White Pelican, <i>Pelecanus erythrorhynchus</i>	Pelecanidae	
N/A	3,600fr	SS#1 Australian Pelican, <i>Pelecanus conspicillatus</i>	Pelecanidae	
N/A	3,600fr	SS#2 Dalmatian Pelican, <i>Pelecanus crispus</i>	Pelecanidae	
		2024 April 25 (Eagles)	Set/6	A*
N/A	600fr	Lesser Spotted Eagle, <i>Clanga pomarina</i>	Accipitridae	
N/A	600fr	Golden Eagle, <i>Aquila chrysaetos</i>	Accipitridae	
N/A	600fr	Tawny Eagle, <i>Aquila rapax</i>	Accipitridae	
N/A	600fr	Golden Eagle, <i>Aquila chrysaetos</i>	Accipitridae	
N/A	600fr	Tawny Eagle, <i>Aquila rapax</i>	Accipitridae	
N/A	600fr	Steppe Eagle, <i>Aquila nipalensis</i>	Accipitridae	
		2024 April 25 (Owls)	Set/6	A*
N/A	600fr	Great Gray Owl, <i>Strix nebulosa</i>	Strigidae	
N/A	600fr	Barn Owl, <i>Tyto alba</i>	Tytonidae	
N/A	600fr	Snowy Owl, <i>Bubo scandiacus</i>	Strigidae	
N/A	600fr	Barn Owl, <i>Tyto alba</i>	Tytonidae	
N/A	600fr	Snowy Owl, <i>Bubo scandiacus</i>	Strigidae	
N/A	600fr	No ID. Scientific name on stamp is for Elkorn Coral Strigidae species	Strigidae	
		2024 April 25 (Owls)	Set/6	A*
N/A	600fr	Spotted Eagle-Owl, <i>Bubo africanus</i>	Strigidae	
N/A	600fr	Barn Owl, <i>Tyto alba</i>	Tytonidae	
N/A	600fr	Little Owl, <i>Athene noctua</i>	Strigidae	
N/A	600fr	Long-eared Owl, <i>Asio otus</i>	Strigidae	
N/A	600fr	Snowy Owl, <i>Bubo scandiacus</i>	Strigidae	
N/A	600fr	Great Horned Owl, <i>Bubo virginianus</i>	Strigidae	

Commentary by Ornithology Author Glenn Mertz

This is an opinion by Glenn G. Mertz, who has authored Ornithology since late 2005. Upon taking over this position, I had continued the listing of all birds on stamps that the prior author and authors before had reported by country.

It has come to the point that some countries will no longer be listed by this author, mainly all countries that fall under the name of Stamperija. They produce stamps for many countries, to the very point that the issues are very excessive and a good number probably not even used in country. A good number of these countries have not assigned Scott number to these countries, because of many reasons, which has been explained to me by the New Issue Editor, Martin Frankevicz.

My process before starting to write my article is to download a copy of all the newer issues I want to get into the current quarter. The reason is to have all the most recent issues so that should a Scott number having not been assigned I at least have a copy to watch for numbers to be assigned so that I don't miss them when going through the newer monthly Linn's Stamp News, which, is where they will be listed. Scott Publishing lists number on a six monthly procedure to capture all 180 plus countries over a period of six months. So I may be holding a good number of photo copies waiting for those countries to be listing again. When writing my article I prefer to list the assigned Scott number for readers of my column to know what the number is.

For those countries that have issued stamps but do not get a Scott number, for reasons, as Martin Frankevicz, New Issues Editor had renumbered many times. For these issues that I report on quarterly, I list, in place of a Scott number, the letters N/A – not available.

Here are the countries that have not been assigned a number, the number of Photo-copies I'm holding and the time period that no number have been assigned

1. Central African Republic –264 photo-copies, period 3/1/2024 back to 12/20/2011
2. Chad—75 photo-copies, period 4/20/2023 back to 9/23/2011.
3. Comoros Islands—46 photo-copies, period /28/2011 to 8/28/2009 (I'm not sur that they even issue postage stamps any more)
4. Congo Dem. Rep.—31 photo-copies, period 7/30/2013 back to 7/3/1999 (I'm not sure that they even issue postage stamps any more)
5. Djibouti—71 photo-copies, period 12/22/23 back to 1/24/2022 (Scott has periodically updated their listings of numbers as reported to then from their postal administrations.)
6. N. Korea—15 photo-copies, period 8/13/2017 back to 10/12/2014
7. Guinea—294 photo-copies, period 3/7/2024 back to 11/6/2006
8. Guinea-Bissau—309 photo-copies, period 3/28/2024 back to 4/1/2001
9. Liberia-Photo-copies, period 1/5/2024 back to 11/30/2020
10. Maldive Islands—62 photo-copies, period 10/1/2021 back to 6/10/2018
11. Mozambique—177 photo-copies, period 4/5/2022 back to 11/28/2013
12. Sierra Leone—119 photo-copies, period 12/15/2023 back to 4/25/2018
13. St. Thomas—49 photo-copies, period 12/30/2021 back to 2/14/2019
14. Togo---Did not bother to count photo-copies—it is easily a ream of 500 sheets, period 4/25/2024 back to 3/20/2013

These are the countries that I and Chuck Braun, of New Birds in the Aviary, have tried to keep abreast of regarding new issues.

My current article this month consisted of mostly the countries of Central African Rep., Guinea, Guinea-Bissau, Liberia, Sierra Leone and Togo, and very few other countries postal issues.

Therefore, with this outpouring of my frustration, I will no longer be listing any stamps printed by Stamperija. If any bird stamp collectors really collect these countries or any other the other countries they issue stamps but I don't list, I'd like to hear from you.

Facts, be, there are two countries have already discontinued issuing stamps. With cell phone, computers with email connections, who needs stamps. My two boys returned albums and stamps that I gave to them to start a hobby of stamp collecting. They both told me it was a boring hobby and they had other interests and gave everything back to me.

Kjell Scharning's website, stopped listing issues by Stamperija at least five or six years ago. Flight, in Great Britain also discontinues their listings about three years ago. Most major stamp dealers don't purchase them. Too expensive and they get very little request for them. Go to the website for Bombay Stamp Company and look at any of the countries Stamperija stocks and you will find very little stock or any listing by them by Bombay Stamp Company.

Glenn. G. Mertz

Turtles and Tortoises on Meters

Miriam Congedo of Italy contacted Dick Roman, our Herpetology Editor recently. She is cataloging turtle meters and is asking for assistance in finding uncataloged items. Some of the items she has found are shown here.

Her web site is located at <http://turtlemeterstamp.altervista.org>. Entries are listed by country on the home page. The site has not had any new entries added to it for several years.



LETTRE



New Birds in the Philatelic Aviary

By Charles E. Braun, BU 1364

New Birds

White-winged Scoter has been split into three species:

- Stejneger's Scoter, *Melanitta stejnegeri*, not yet on a stamp;
- Velvet Scoter, *Melanitta fusca*, previously reported on issues from Aland (1987), Sweden (1993), Finland (2017) and Saint Vincent & Genadines (2022) and
- White-winged Scoter, *Melanitta deglandi*, see below.

WHITE-WINGED SCOTER, *Melanitta deglandi* Anatidae

Ivory Coast, 1985, C96, 350fr

Length: 20 to 23 inches, sexes similar, migratory. Dark, with a dark bill and white wing patches.

Habitat: Breeds in freshwater ponds in tundra; winters on sea coasts.

Range: Breeds from Alaska to Hudson Bay; winters on the Pacific coast from Alaska to Baja California and on the US Atlantic coast.

Reference: del Hoyo, J., A. Elliott and J. Sargatal, Eds. Handbook of the Birds of the World, Volume 1.



SICKLE-WINGED GUAN, *Chamaepetes goudotii* Cracidae

Colombia, 2025, not yet cataloged, 5000p

Length: 20 to 26 inches, sexes alike. Resident. Black, with a bright chestnut belly, pale blue facial skin and red eyes.

Habitat: Humid forest and forest borders.

Range: Columbia to central Peru

Reference: del Hoyo, J., A. Elliott and J. Sargatal, Eds. Handbook of the Birds of the World, Volume 2.



Red Grouse, *Lagopus scoticus* has been split from Willow Grouse. It was written up for a 2022 issue from Niger.

Crested Argus has been split into Vietnamese Crested Argus and Malaysian Crested Argus.

VIETNAMESE CRESTED ARGUS, *Rheinardia ocellata* Phasianidae

Vietnam, 1979, 1015. 60xu

Length: Male 78 to 114 inches female 62 to 70 inches, sexes similar. White-spotted brown, with a short crest and a black crown, patterned head and white chin and throat.

Habitat: Lowland and montane forest.

Range: Central Vietnam and eastern Laos..

Reference: del Hoyo, J., A. Elliott and J. Sargatal, Eds. Handbook of the Birds of the World, Volume 2.



MALAYSIAN CRESTED ARGUS. *Rheinardia nigrescens* Phasianidae

Malaysia, 1989. 412, \$1

Length: Male 6.2 to 7.8 feet, female 30 inches, resident. The male (bird on the right) is white-spotted dark brown with a brownish bill and long white crest; the female (bird on the left) is barred-and-marbled brown.

Habitat: Lower forest.

Range: Central peninsular Malaysia.

Reference: del Hoyo, J., A. Elliott and J. Sargatal, Eds. Handbook of the Birds of the World, Volume 2.



**COLOMBIAN GREBE, *Podiceps andinus*** Podicipedidae

Guinea-Bissau. 2023. not yet cataloged, 450fr Extinct about 2017

Length: 13 inches, sexes alike, resident. Chestnut-brown above and whitish below, with a rufous face, neck, breast and flanks.

Habitat: Fresh water wetlands.

Range: North-central Colombia.

Reference: del Hoyo, J., A. Elliott and J. Sargatal, Eds. Handbook of the Birds of the World, Volume 1.

**HUMBOLDT'S SAPPHIRE, *Hylocharis humboldtii*** Trochilidae

Colombia, 2025, not yet cataloged, 5000p

Length: 4 inches, resident. The male is green, with a blue forehead, dark wings and white undertail; the female has a white throat and breast.

Habitat: Coastal mangroves and adjacent areas.

Range: Southwestern Panama to northwestern Ecuador

Reference: del Hoyo, J., A. Elliott and J. Sargatal, Eds. Handbook of the Birds of the World, Volume 5.

**BOGOTA SUNANGEL, *Heliangelus zusii*** Trochilidae

Columbia, 2025, not yet cataloged, 5000p Known from a single 1909 specimen.

Length: 7 inches, sexes alike, resident. Bright purple, with black wings and a bright green chin and crown.

Habitat: Mountains.

Range: Columbian Andes.

Reference: Birdlife International, 2007.

Eastern Cattle Egret, *Bubulcus coromanda* has been split from *Bubulcus ibis* (now Western Cattle Egret) and includes issues from North Vietnam (see below), Russia (1976), Kampuchea (1984), Palau (1991, 2002), Japan (1997), Portugal (2005) and Hong Kong (2005).

**EASTERN CATTLE EGRET, *Bubulcus coromanda*** Ardeidae

North Vietnam, 1972, 671, 30xu

Length: 20 to 22 inches, sexes alike, resident. White, with a reddish buff head to upper breast and back.

Habitat: Open areas, swamps and rice fields.

Range: Southern and eastern Asia to Australia and New Zealand,

Reference: del Hoyo, J., A. Elliott and J. Sargatal, Eds. Handbook of the Birds of the World, Volume 1.

**MOUNTAIN VELVETBREAST, *Lafresnaya lafresnayi*** Trochilidae

Guinea, 2023, not yet cataloged, 8500fr

Length: 5 inches, resident. The male (upper bird) is green, with a black belly and a black-tipped whitish tail; the female (lower bird) is green-spotted buff below.

Habitat: Borders of humid mountain forest and shrubby slopes.

Range: Western Venezuela to central Peru.

Reference: del Hoyo, J., A. Elliott and J. Sargatal, Eds. Handbook of the Birds of the World, Volume 5.



MELANESIAN KINGFISHER, *Todiramphus tristrami* Alcedinidae

Sierra Leone, 2024, not yet cataloged, 135Le

Length: 9 to 10 inches, sexes similar, resident. Blue above and rufous below, with a blue crown, rufous loreal spot, black mask and pale neck.

Habitat: Open areas, swamps and rice fields. Coastal areas.

Range: New Britain.

Reference: del Hoyo, J., A. Elliott and J. Sargatal, Eds. Handbook of the Birds of the World, Volume 6



RED-BREASTED PARADISE KINGFISHER, *Tanysiptera nympha*

Alcedinae

Sierra Leone, 2024, not yet cataloged. 135Le and 23Le

Length: 12 to 14 inches, sexes similar, resident. Blue-black above and pink-red rump and below, with blue wings and a long white-tipped blue tail.

Habitat: Lowland forest, tall secondary growth and mangroves

Range: New Guinea

Reference: del Hoyo, J., A. Elliott and J. Sargatal, Eds. Handbook of the Birds of the World, Volume 7



CRIMSON-WINGED WOODPECKER, *Picus puniceus* Picidae

Sierra Leone, 2024, not yet cataloged, 135Le

Length: 10 inches, resident. The male (shown on the stamp) is green, with a crimson-red crown, wings and malar stripe, yellow nape and blackish-brown uppertail. The female lacks the malar stripe.

Habitat: Forest. forest edges, secondary growth and plantations.

Range: Southern Myanmar to Sumatra and Borneo.

Reference: del Hoyo, J., A. Elliott and J. Sargatal, Eds. Handbook of the Birds of the World, Volume 7.



IBERIAN GREEN WOODPECKER, *Picus sharpei* Picidae

Sierra Leone, 2024, not yet cataloged, 135Le

Length: 12 to 13 inches, sexes similar resident. Dark brown, with a dusky bill and rosy-gray skin around the eyes.

Habitat: Forest edges, clearings, parks, orchards and residential areas.

Range: Pyrenees, Spain and Portugal.

Reference: del Hoyo, J., A. Elliott and J. Sargatal, Eds. Handbook of the Birds of the World, Volume 7.



RED-AND-BLUE LORY, *Trichoglossus histrio histrio*

Psittaculidae Subspecies

Togo, 2024, not yet cataloged, 3600fr Lower left surrounds

Length: 12 inches, sexes alike, resident. Red, with purplish-blue cap eye to mantle, broad breastband and tail.

Habitat: Breeds in forest; feeds in open areas.

Range: Sangihe, Siau and Ruang islands, Indonesia.

Reference: del Hoyo, J., A. Elliott and J. Sargatal, Eds. Handbook of the Birds of the World, Volume 4

RED-AND-BLUE LORY, *Trichoglossus histrio challengeri* Psittaculidae Subspecies

Togo, 2024, not yet cataloged, 3600fr Center surrounds

Length: 12 inches, sexes alike, resident. Red, with purplish-blue cap, eye mantle, narrow breastband and tail.

Habitat: Breeds in forest; feeds in open areas.

Range: Miangas Island, Indonesia.

Reference: del Hoyo, J., A. Elliott and J. Sargatal, Eds. Handbook of the Birds of the World, Volume 4

**SUNSET LORIKEET, *Trichoglossus forsteni*** Psittaculidae Subspecies

Togo, 2024, not yet cataloged, 3600fr

Length: 10 to 12 inches, sexes alike, resident Green above and red below, with a dark brown head, yellow nuchal collar and a dark green belly,

Habitat: Lowland forest and woodland.

Range: Sumbawa, Indonesia.

Reference: del Hoyo, J., A. Elliott and J. Sargatal, Eds. Handbook of the Birds of the World, Volume 4

**PALM LORIKEET, *Vini palmarum*** Psittaculidae

Togo, 2024. not yet cataloged, 3600fr

Length: 6 to 7 inches. sexes similar, resident. Green, with a red patch around a red bill and a yellow-tipped tail.

Habitat: Forest.

Range: Vanuatu.

Reference: del Hoyo, J., A. Elliott and J. Sargatal, Eds. Handbook of the Birds of the World, Volume 4

**RED-CHINNED LORIKEET, *Vini rubrigularis*** Psittaculidae

Togo, 2024, not yet cataloged, 3600fr Surrounds

Length: 7 inches, sexes alike, resident. Green, with a red patch around a red bill.

Habitat: Forest canopy.

Range: New Britain.

Reference: del Hoyo, J., A. Elliott and J. Sargatal, Eds. Handbook of the Birds of the World, Volume 4

**SAFFRON-HEADED PARROT, *Pionopsitta pyrilia*** Psittacidae

Colombia, 2024, not yet cataloged, 5000p

Length: 10 inches, sexes alike, resident. Green above and olive below, with a yellow head and shoulders. and a bare white orbital ring.

Habitat: Humid forest and tall second growth.

Range: Eastern Panama to northwestern Venezuela.

Reference: del Hoyo, J., A. Elliott and J. Sargatal, Eds. Handbook of the Birds of the World, Volume 4.



**BLACK-CROWNED PITTA, *Erythropitta ussheri*** Pittidae

Guinea-Bissau, 2024, not yet cataloged, 3600fr

Length: 6 inches, sexes alike, resident. Glossy black above and red below, with a purple-black upper breast.

Habitat: Forest.

Range: Northern Borneo.

Reference: del Hoyo, J., A. Elliott and J. Sargatal, Eds. Handbook of the Birds of the World, Volume 8.

**WHITE-BEARDED MANAKIN. *Manacus manacus*** Pipridae

Sierra Leone, 2024, not yet cataloged, 23Le

Length: 4 inches, resident. The male (shown on the stamp) is whitish, with a black crown, wings and tail; the female is pale gray, with olive crown, wings and tail.

Habitat: Forest edges, low shrubby forest and secondary woodland

Range: Northern Colombia to Ecuador, eastern Brazil and northeastern Argentina.

Reference: del Hoyo, J., A. Elliott and J. Sargatal, Eds. Handbook of the Birds of the World, Volume 9.

**KINGLET MANAKIN, *Machaeropterus regulus*** Pipridae

Sierra Leone, 2024, not yet cataloged, 135Le Surrounds

Length: 4 inches, resident. The male is olive above and streaky whitish below, with a red cap; the female lacks the red and the streaks.

Habitat: Humid lowland forest.

Range: Coastal southeastern Brazil.

Reference: del Hoyo, J., A. Elliott and J. Sargatal, Eds. Handbook of the Birds of the World, Volume 9.

**RACQUET-TAILED TREEPIE. *Crypsirina temia*** Corvidae

Cambodia, 2024. not yet cataloged, 3000r

Length: 13 inches, sexes similar, resident. All-dark, with a long spatulate-tipped tail.

Habitat: Lowland open forest and mixed secondary growth.

Range: Southern Myanmar to extreme southern China and Vietnam, and Java and Bali.

Reference: del Hoyo, J., A. Elliott and J. Sargatal, Eds. Handbook of the Birds of the World, Volume 14.

**BLACK-RUMPED MAGPIE, *Pica bottenensis*** Corvidae

Guinea-Bissau, 2024, not yet cataloged, 3600fr Right surrounds

Length: 18 to 20 inches, sexes alike, resident. Black, with a white lower breast, belly, and wing patch.

Habitat: Open country.

Range: West-central China and central Bhutan,

Reference: del Hoyo, J., A. Elliott and J. Sargatal, Eds. Handbook of the Birds of the World, Volume 12.

AFRICAN BLUE TIT, *Cyanistes teneriffae* Paridae

Sierra Leone, 2024, not yet cataloged, 23Le

Length: 4 to 5 inches, sexes alike, resident. Gray-blue above and yellow below, with a white-bordered deep glossy blue crown and black-edged white cheeks.

Habitat: Woodland, scrub, parks and gardens.

Range: Canary Islands, Morocco and Tunisia.

Reference: del Hoyo, J., A. Elliott and J. Sargatal, Eds. Handbook of the Birds of the World, Volume 14.



Western Subalpine Warbler has been split from Subalpine Warbler.

WESTERN SUBALPINE WARBLER, *Curruca iberiae* Sylviidae

Spain, 1985, 2458, 6p

Length: 5 inches, sexes similar, migratory. Bluish gray above and orangy red-brown below.

Habitat: Open country.

Range: Breeds from Portugal to western Italy and Morocco to Libya; winters in sub-Saharan Africa.

Reference: del Hoyo, J., A. Elliott and J. Sargatal, Eds. Handbook of the Birds of the World, Volume 11.

**CRESTED FINCHBILL, *Spizixos canifrons*** Pycnonotidae

Sierra Leone, 2024, not yet cataloged, 23Le

Length: 8 to 9 inches, sexes similar, resident. Olive-green above and yellowish olive-green below, with a black crest and face, and pale gray forehead, chin and throat.

Habitat: Forest, montane scrub secondary growth and overgrown clearings.

Range: Northeastern India to southern China, northwestern Vietnam and northwestern Thailand.

Reference: del Hoyo, J., A. Elliott and J. Sargatal, Eds. Handbook of the Birds of the World, Volume 10.

**BLACK-HEADED BULBUL, *Microtarsus melanocephalos*** Pycnonotidae

Cambodia, 2024, not yet cataloged, 1000r

Length: 6 to 7 inches, sexes alike, resident. Olive-yellow, with a black head and broad black tailband.

Habitat: Forest, clearings and waterways.

Range: Eastern Bangladesh to Vietnam, Java and the western Philippines.

Reference: del Hoyo, J., A. Elliott and J. Sargatal, Eds. Handbook of the Birds of the World, Volume 10.

**RUSTY LAUGHINGTHRUSH, *Pterorhinus poecilorhynchus*** Leiotrichidae

Sierra Leone, 2024, not yet cataloged, 23Le

Length: 11 inches, sexes alike, resident. Ochraceous rufous-brown above and upper breast and smoky gray below.

Habitat: Forest.

Range: Taiwan.

Reference: del Hoyo, J., A. Elliott and J. Sargatal, Eds. Handbook of the Birds of the World, Volume 12.





RUFOUS-VENTED LAUGHINGTHRUSH, *Pterorhinus gularis*

Leiotrichidae

Sierra Leone, 2024, not yet cataloged, 23Le

Length: 8 to 10 inches, sexes alike, resident. Rusty-brown above yellow below, with a gray crown, black mask and gray flanks.

Habitat: Forest and secondary growth.

Range: Southeastern Bhutan to northern Vietnam.

Reference: del Hoyo, J., A. Elliott and J. Sargatal, Eds. Handbook of the Birds of the World, Volume 12.



CAMBODIAN LAUGHINGTHRUSH, *Garrulax ferrarius* Leiotrichidae

Cambodia, 2024, not yet cataloged, 2500r

Length: 11 to 12 inches, sexes similar, resident. Gray, with a chocolate-brown head and throat, brownish wings a pale spot behind the eyes and a white neck patch.

Habitat: Broadleaf evergreen forest.

Range: Southwestern Cambodia.

Reference: del Hoyo, J., A. Elliott and J. Sargatal, Eds. Handbook of the Birds of the World, Volume 12.



STRIPED LAUGHINGTHRUSH, *Trochalopterus virgatum*

Leiotrichidae

Sierra Leone, 2024, not yet cataloged 23Le

Length: 8 inches, sexes alike, resident, White-streaked brown above and rufous-buff below, with a buffy-white face and a streaky chestnut throat and upper breast.

Habitat: Thick scrub, fern and grass.

Range: Extreme northeastern India.

Reference: del Hoyo, J., A. Elliott and J. Sargatal, Eds. Handbook of the Birds of the World, Volume 12.



LONG-BILLED WREN, *Cantorcilus longirostris* Troglodytidae

Sierra Leone, 2024, not yet cataloged, 135Le

Length: 8 inches, sexes similar, resident. Brown above and buff below, with whitish superciliary, dark brown eyestripe and mottled cheeks.

Habitat: Secondary forest, forest edges and shrubby clearings.

Range: Eastern Brazil.

Reference: del Hoyo, J., A. Elliott and J. Sargatal, Eds. Handbook of the Birds of the World, Volume 10.

White-breasted Thrasher has been split into two species; Martinique Thrasher and St. Lucia Thrasher



MARTINIQUE THRASHER, *Ramphocinclus brachyurus* Mimidae

Grenada, 1996, 2579f. \$1.50

Length: 8 to 9 inches, sexes similar, resident. Dark brown above and white below, with a brown vent.

Habitat: Dry areas

Range: Martinique, central Antilles.

Reference: del Hoyo, J., A. Elliott and J. Sargatal, Eds. Handbook of the Birds of the World, Volume 10.

ST. LUCIA THRASHER, *Ramphocinclus sanctaluciae* Mimidae

St. Lucia, 1976, 398. \$1

Length: 8 to 9 inches, sexes similar, resident. Dark brown above and white below.

Habitat: Dry areas.

Range: St. Lucia, south-central Antilles.

Reference: del Hoyo, J., A. Elliott and J. Sargatal, Eds. Handbook of the Birds of the World, Volume 10

**KAROO THRUSH, *Turdus smithi*** Turdidae

Namibia, 2025, not yet cataloged, Zone A

Length: 8 to 10 inches, sexes similar, resident. Grayish brown above and dull orange below, with a finely streaked throat and an olive-gray breast.

Habitat: Highlands.

Range: Southern Namibia, southeastern Botswana and northern South Africa,

Reference: del Hoyo, J., A. Elliott and J. Sargatal, Eds. Handbook of the Birds of the World, Volume 10.



Dusky Thrush has been split into Naumann's Thrush (issues from Japan 2000 and Dominica, 2006) and Dusky Thrush (see below).

NAUMANN'S THRUSH, *Turdus naumanni* Turdidae

Japan, 2000, 2703i, ¥80

Length: 8 to 10 inches, migratory. The male (shown on the stamp) is gray-brown above and orange-rufous below with an orange rufous superciliary and a pale rufous tail; the female has a buffy throat and superciliary and a brown tail.

Habitat: Breeds in fringes of tundra; winters in lowland floodplain, scrub oak and stubble fields.

Range: Breeds in central Siberia, winters from extreme southeastern Russia to eastern China, Korea and Japan.

Reference: del Hoyo, J., A. Elliott and J. Sargatal, Eds. Handbook of the Birds of the World, Volume 1

**DUSKY THRUSH, *Turdus eunomus*** Turdidae

Sierra Leone, 2024, not yet cataloged, 23Le and 135Le

Length: 9 to 10 inches, similar, migratory. Rufous-scalloped blackish above and blackish-scalloped whitish below, with a black-and-white head and throat.

Habitat: breeds in tundra areas; winters in hillside scrub and semi-open areas.

Range: Breeds in northern Siberia. Winters from northeastern India to Japan

Reference: del Hoyo, J., A. Elliott and J. Sargatal, Eds. Handbook of the Birds of the World, Volume 10.

**SHORT-TOED ROCK-THRUSH, *Monticola brevipes*** Turdidae

Namibia, 2025, not yet cataloged, Postcard rate

Length: 7 inches, resident. The male (shown on the stamp) is gray above and orange-brown below, with a blackish face patch. the female lacks the face patch and has a speckled whitish throat.

Habitat: Dry mountainous areas,

Range: Western Angola to central South Africa.

Reference: del Hoyo, J., A. Elliott and J. Sargatal, Eds. Handbook of the Birds of the World, Volume 10





CHESTNUT-BELLIED ROCK-THRUSH, *Monticola rufiventris* Turdidae
Sierra Leone, 2024, not yet cataloged, 135Le

Length: 8 inches. resident. The male (shown on the stamp) is blue-gray above and deep chestnut below, with a blackish face; the female is gray-brown above and slate-gray-scalloped white below. With a whitish-buff eyering and circular ring around the ear.

Habitat: Forest, forest edges and bushes.

Range: Pakistan to southern China and northern Vietnam.

Reference: del Hoyo, J., A. Elliott and J. Sargatal, Eds. Handbook of the Birds of the World, Volume 10.

RED-HEADED BULLFINCH, *Pyrrhula erythrocephala* Fringillidae
Guinea-Bissau, 2024; not yet cataloged, 1200fr

Length: 7 inches, resident. The male (shown on the stamp) is pale gray above and orange below, with a black face and wings; the female is gray, with a black face and wings and a brownish crown and nape.

Habitat: Forest.

Range: Southeastern Kashmir to southwestern China.

Reference: del Hoyo, J., A. Elliott and J. Sargatal, Eds. Handbook of the Birds of the World, Volume 15.



TAWNY-CRESTED TANAGER, *Tachyphonus delatrii* Thraupidae
Colombia, 2025, not yet cataloged, 5000p

Length: 5 inches, resident. The male (shown on the stamp) is glossy black, with a yellowish crest; the female is dull dark olive-brown above, paler below, with a grayish brown head

Habitat: Forest, forest borders, second growth and shrubby cut-over areas.

Range: Eastern Honduras to northwestern Ecuador.

Reference: del Hoyo, J., A. Elliott and J. Sargatal, Eds. Handbook of the Birds of the World, Volume 16.





Ichthyology

by Harvey Robbins, BU#1897



Scott#	Denom	Common name/Scientific Name	Family/subfamily	Code
ANDORRA (French)				
2024 May 10 (Europa-Underwater flora and fauna) Single				
883	€1.96	Brown trout, <i>Salmo trutta</i> (head only) (LR)	Salmonidae	S
		Rainbow trout, <i>Oncorhynchus mykiss</i> (c)	Salmonidae	S
		Adjacent label shows another brown trout		
ARMENIA				
2024 June 12 (Europa-Underwater flora and fauna) SS/1				
1426	500d	Sevan trout, <i>Salmo ischchan</i> (L) around pupil of fish's eye	Salmonidae	B
		Sevan khramulya, Transcaucasian carp, <i>Capoeta sevangi</i> (UR)	Cyprinidae	B
		Stylized fish head with stamp as eye		U Z
AUSTRALIA				
2024 March 12 (Exotic cuisines) Set/4, SS/4, Bklt Pa SA of 10/4				
5728	\$1.20	Fish (2) in display of Mediterranean cuisine		U
5732	\$1.20	as above (SA)		U
2024 March 28 (Marine emblems of Australian states) Set/3, SS3/1, SA Bklt Pa 10/1				
5736	\$1.50	Leafy seadragon, <i>Phycodurus eques</i> (South Australia)	Syngnathidae	A
5737	\$3	Eastern blue groper, <i>Achoerodus viridis</i> (New South Wales)	Labridae	A
5738	\$4.50	Barrier Reef clownfish, <i>Amphiprion akindynos</i> (Queensland)	Pomacentridae	A
5739 (SA)	\$1.50	Leafy seadragon, <i>Phycodurus eques</i> (South Australia)	Syngnathidae	A
2024 July 1 (Marine emblems of Australian states) Set/3, SS3/1, SA Bklt Pa 5/3				
5781	\$2.85	Barramundi, <i>Lates calcarifer</i> (Northern Territory)	Latidae	A
5782	\$3.30	Leafy seadragon, <i>Phycodurus eques</i> (Victoria)	Syngnathidae	A
5783	\$4.55	Whale shark, <i>Rhincodon typus</i> (Western Australia)	Rhincodontidae	A
5784 (SA)	\$2.85	Barramundi, <i>Lates calcarifer</i> (Northern Territory)	Latidae	A
5785 (SA)	\$3.30	Leafy seadragon, <i>Phycodurus eques</i> (Victoria)	Syngnathidae	A
5786 (SA)	\$4.55	Whale shark, <i>Rhincodon typus</i> (Western Australia)	Rhincodontidae	A
AZERBAIJAN				
2024 May 13 (Europa-Underwater flora and fauna) Set/2, SS/1				
1407	0.5m	Humphead wrasse, <i>Cheilinus undulatus</i>	Labridae	A
1409	1.5m (SS)	Tiny stylized fish above/below blue whale		S U
		Stylized fish in selvage (several species)		Z U
BELGIUM				
2024 April 2 (Europa-Underwater flora and fauna) SS/2				
3031 SS/2		Basking shark, <i>Cetorhinus maximus</i> (UR)	Cetorhinidae	S Z
		Angelshark, <i>Squatina squatina</i> (L)	Squatinae	S Z
		European sea sturgeon, <i>Acipenser sturio</i> (C)	Acipenseridae	S Z
		Common skate, <i>Dipturus batis</i> (LL)	Rajidae	S Z
		Transparent goby, <i>Aphia minuta</i> (L)	Gobiidae	S Z
		Seahorse, <i>Hippocampus sp.</i> (L)	Syngnathidae	S Z
		Fifteen spined stickleback, <i>Spinachia spinachia</i> (L)	Gasterosteidae	S Z
3031a (€7.98)		Spiny dogfish, <i>Squalus acanthias</i>	Squalidae	A
3031b (€7.98)		European eel, <i>Anguilla anguilla</i>	Anguillidae	A

BOSNIA & HERZEGOVINA (Croat Admin.) 2024 April 6 (Intl Day of Sport for Develop. & Peace)			
481	130m	Man and boy fishing with poles and reels	R
BOSNIA & HERZEGOVINA (Serb Admin.) 2023 November 23 (Banknotes & coins) HS/3			
710c	1.10m	Banknote shaped like fish (origami) and coin	S
CHINA (PEOPLES REPUBLIC) 2023 September 9 (Folk Art kites) Set/4			
4993	\$1.20	Goggle eye goldfish kite	S
CHINA (Taiwan) 2024 July 4 (Family leisure activities-Series 2) Bl/6			
4733a	\$8	Family looking at open album with several fish stamps (Stamp collecting)	U
CZECH REPUBLIC 2023 September 6 (Flora and fauna of Podyji Nat'l Park) MS/4 & labels			
3942a-d		Brown trout, <i>Salmo trutta</i> (LR)	Salmonidae Z
		Bullhead, <i>Cottus gobio</i> (LR)	Cottidae Z
2024 May 7 (Europa- Underwater flora and fauna) Single			
3965	44k	European perch, <i>Perca fluviatilis</i> (L)	Percidae A
		Northern pike, <i>Esox lucius</i> (R)	Esocidae A
FALKLAND ISLANDS 2023 November 3 (Development Corporation 40y) Set/5			
1367	80p	Fishing trawler	R
2023 December 19 (Government Air Service, 75y) Set/4			
1371	80p	VP-FBO, Fishery Patrol airplane	R
FRANCE 2024 February 9 (The color of animals) Bklt/12			
6595	€1.29	Parrotfish scales (closeup)	Labridae R
2024 May 10 (Europa-Underwater flora & fauna) Single			
6630	€1.96	Devil fish, <i>Mobula mobular</i> (T)	Myliobatidae B
		Cuckoo wrasse, <i>Labrus mixtus</i> (LL)	Labridae B
		Wreckfish, <i>Polyprion americanus</i> (UR)	Polyprionidae B
		Mediterranean moray, <i>Muraena helena</i> (R)	Muraenidae B
		Annular seabream, <i>Diplodus annularis</i> (LC)	Sparidae B
FRENCH SOUTHERN & ANTARCTIC TERRITORIES 2024 January 2 (Fish) Single			
709	€1.16	Tristan rainbow wrasse, <i>Suezichthys ornatus</i>	Labridae A
2024 January 2 (Rescue of survivors from Princess of Wales, 200y) Single			
713	€2.32	Tail of fish emerging from water at shipwreck	R
2024 January 2 (Fish) Pair			
716a	€0.58	Long-fingered icefish, <i>Cryodraco antarcticus</i> (juvenile facing left)	Channichthyidae A
716b	€0.58	Same species (adult facing right)	Channichthyidae A
2024 January 2 (Proteker Program to install coastal sea floor observatory) MS/2			
719a	€1.16	Stylized fish being scanned by diver	S
2024 January 2 (Adelie Land marine life) MS/2			
720b	€1.65	Blunt scalyhead, <i>Trematomus eulepidotus</i>	Nototheniidae A
GREAT BRITAIN			
Guernsey 2024 May 14 (Europa-Underwater flora & fauna) Set/6			
1770	£1.68	Cuckoo wrasse, <i>Labrus mixtus</i> (part male & part female)	Labridae A
Isle of Man 2024 March 7 (Mosaics of fish by Kimmie McHarrie) Set/6			
2360	85p	Atlantic herring, <i>Clupea harengus</i>	Clupeidae S
2361	£1.28	Atlantic cod, <i>Gadus morhua</i>	Gadidae S
2362	£1.51	Atlantic mackerel, <i>Scomber scombrus</i>	Scombridae S
2363	£1.82	Red gurnard, <i>Chelidonichthys cuculus</i>	Triglidae S
2364	£2.31	Atlantic salmon, <i>Salmo salar</i>	Salmonidae S
2365	£2.72	John Dory, <i>Zeus faber</i>	Zeidae S

Isle of Man (continued)**2024 May 13** (Peel Traditional Boat Weekends, 25y, posters) Set/62386 £1.60 Basking shark, *Cetorhinus maximus* (shown beneath sailboats) Cetorhinidae B**IRELAND****2022 September 1** (Urban art) Bklt Pa /4

2370 (€1.25) Stylized fish (L & R lower corners) in 'The Norman Way' by Holly Pereira S

JAPAN**2024 Mar 6** (My journey #9-Shikoku) MS10/24721i ¥63 Tuna (bonito), *Katsuwonus pelamis*, steaks with sauce Scombridae R**LIECHTENSTEIN****2024 June 3** (Europa-Underwater Flora and Fauna) Pair1930b 190rp European perch, *Perca fluviatilis* Percidae A**MARSHALL ISLANDS****2023 January 6** (Mandarinfish) MS6/1 and SS/11401a \$2 Mandarinfish, *Synchiropus splendidus* (floating looking right) Callionymidae A

1401b \$2 Same species (floating looking left) Callionymidae A

1401c \$2 Same species (head/belly view) Callionymidae A

1401d \$2 Same species (on coral looking right) Callionymidae A

1401e \$2 Same species (turning right) Callionymidae A

1401f \$2 Same species (on bottom looking right) Callionymidae A

1402 \$8 Mandarinfish, *Synchiropus splendidus* Callionymidae A**MOLDOVA****2024 April 19** (Europa-Underwater Flora & Fauna) Set/21220 12L Beluga, *Huso huso* Acipenseridae A**NORFOLK ISLAND****2024 June 11** (Fishing) Set/2 & SS2/11186 \$1.50 Yellowtail amberjack, *Seriola lalandi* & shoreline angler Carangidae B1187 \$3.00 Trumpet emperor, *Lethrinus miniatus* & deep-water angler Lethrinidae B**SINGAPORE****2021 March 2021**, November 2022 & July 2024 (Zodiac signs) Set/12 & SS

2209 \$1.50 Two stylized fish representing Pisces (November 22) S

UNITED NATIONS**New York****2024 April 26** (Endangered species) Set/41334 \$1.55 Giant guitarfish, *Rhynchobatus djiddensis* Rhinidae A**Geneva****2024 April 26** (Endangered species) Set/4742 1.90fr Itaituba River stingray, *Potamotrygon albimaculata* Potamotrygonidae A745 1.90fr Shortfin mako shark, *Isurus oxyrinchus* Lamnidae A**Vienna****2024 April 26** (Endangered species) Set/4719 €1.50 Scalloped hammerhead shark, *Sphyrna lewini* Sphyrnidae A



INVERTEBRATES

Editor

Peter Voice, BU1891



This list compiles every marine invertebrate and select freshwater and terrestrial invertebrates (snails, land crabs, etc.) published in the Linn's Stamp News Updates from the March 2025 to the May 2025 issue.

New Listings

Scott#	Denom	Common Name/Scientific Name	Family/Subfamily	Code
CHINA (PEOPLE'S REPUBLIC) 2024 April 18 (Chengjiang Fossils*) Set/3				
5036	\$1.20	<i>Microdictyon</i> Fossil	Eoconchariidae	A
5037	\$1.20	<i>Cricosomia jinningensis</i> and <i>Inquicus fellatus</i>	See notes	A
3057a	Vertical Pair #5036-5037 + 2 labels			
5038	\$1.20	<i>Fuxianhuia</i>	Fuxianhuiidae	A
5038a	Vertical pair #5037-5038 + 2 labels			
COCOS ISLANDS 2024 October 8 (Hermit Crabs) Set/3				
429	\$1.50	Red Hermit Crab, <i>Coenobita perlatus</i>	Coenobitidae	A
429a	Perf. 14 x 14¾			
430	\$1.50	Tawny Hermit Crab, <i>Coenobita rugosus</i>	Coenobitidae	A
430a	Perf. 14 x 14¾			
431	\$1.50	Purple Hermit Crab, <i>Coenobita brevimanus</i>	Coenobitidae	A
431a	Perf 14 x 14¾			
431b	Souvenir sheet of 3, #429a-431a			
GERMANY 2024 (Message in a Bottle Type of 2022) Set/1				
3413	20c	Stamp-like Coral and Fish	Stylized	S
GHANA 2023 May 8 (Invertebrates) Set/4 + 1 SS				
3003a	15ce	Giant Clam, <i>Tridacna gigas</i>	Cardiidae	A
3003b	15ce	Coconut Crab, <i>Birgus latro</i>	Coenobitidae	A
3003c	15ce	Triton's Trumpet, <i>Charonia tritonis</i>	Charoniidae	A
3003d	15ce	Small Giant Clam, <i>Tridacna maxima</i>	Cardiidae	A
3004	30ce	Giant African Snail, <i>Achatina fulica</i> **	Achatinidae	A
JAPAN 2024, May 15				
4734d	¥63	Shell and pearl (stylized scallop)	Pectinidae	S
2024 September 2				
4749	¥16	Shells	Various	S

Notes

*People's Republic of China #5036-5037 are prehistoric marine invertebrates found in the Chengjiang Deposits dating to the Early Cambrian of China. *Microdictyon* is classified as a panarthropod – an animal closely related to modern arthropods but with an unusual body plan. #5037 shows two species of worms – *Cricosomia jinningensis* is the large worm that takes up the bulk of the center of the stamp. It is a paleoscolecid worm. Several smaller worms are shown attached to the body of the larger *C. jinningensis* – these smaller worms are individuals of the species *Inquicus fellatus* – which is interpreted as living

attached to the larger worm using suction in a symbiotic life mode. Close examination of the image will show that the individuals of *I. fellatus* have a shape like a bowling pin. #5038 shows *Fuxianhuia*, another early arthropod. This set was released in sheets with 4 of each stamp and 12 labels running down the center of the sheet in 2 columns. The labels in the sheet form a scene of the Early Cambrian seafloor at Chengjiang with a variety of arthropods (including trilobites and anomalocarids), various worms, jellyfish, sponges, eocrinoids, etc. Note that this issue was also described in Michael Kogan's paleophilately column.

**Ghana 3004 – the stamp labels this Giant African Snail as *Achatina fulica*. This species appears to have been reclassified as *Lissachatina fulica*. Several different species are collectively called Giant African Land Snails also including *Achatina achatina* and *Archachatina marginata*.



Cocos Islands 2024 431b



Germany 3414



Ghana 2023 Invertebrates Issue – 3003a-d and 3004

Japan 2024 – 4734d and 4749



Upcoming issues of interest:

On February 3, 2025, the Åland Islands issued a set of 4 franking labels showing “Treasures of the Sea”. Stylistically, these labels look similar to their Europa issue from last year. Two of the labels show marine invertebrates – the blue mussel (*Mytilus edulis*) and the jellyfish (*Aurelia aurita*). The other two labels show the alga, Bladderwrack (*Fucus vesiculosus*) and the three-spined stickleback (*Gasterosteus*



aculeatus). The official first day cover has a cachet showing a clump of bladderwrack with a three-spined stickleback, while the postmark shows a stylized sketch of the jellyfish *Aurelia aurita*.

On February 10, 2025, Sint Maarten issued a mini-sheet with 10 stamps of tropical shells. Additional shells are shown in the selvage of the sheet.

On March 11, Great Britain issued a set featuring Garden Wildlife. One of the 1st class stamps in the set shows a Garden Snail. The set includes 9 other animals



including amphibians (Smooth Newt and Common Frog), Birds (Robin, Blackbird, and Blue Tit), insects (Buff-tailed Bumblebee), and Mammals (Hedgehog, Fox, and Badger).

Also on March 11, Australia issued a set of three stamps showing Egg Cowries – snails of the Family Ovulidae. The three species shown were photographed by Brian R. Mayes in the waters of Nelson Bay, New South Wales. These animals anchor themselves to soft corals and sea fans with their foot – and use their radula (a specialized mouthpart) to feed on their hosts. You will note the colorful appearance of these animals on the stamps – this is not the true color of the shells but instead the colorful mantle of the snails. The mantle is the organ that secretes the shell and in Ovulids wraps around the shell. The shells are generally white or pink in color. The color pattern of the mantle is used as



camouflage. The three species shown include the Platypus Egg Cowrie (*Cuspidovolvula platysia*) on a gorgonian (*Guaigorgia* sp.), the Tiger Egg Cowrie (*Cuspidovolvula tigris*) on a gorgonian (*Euplexaura* sp.), and the Nebulous

Egg Cowrie (*Testudovolvula nebula*) on a soft coral (*Dendronephthya australis*).

Source: <https://australiapostcollectables.com.au/stamp-issues/living-seashells-egg-cowries>.

Australia's Cocos (Keeling) Islands will issue on May 20, a set of stamps showing corals from the coral reefs of these atolls. Like the egg cowrie stamps, these are photographs reproduced on stamps – all were taken by Karen Willshaw. The ten stamps include:

- \$1.50 Red soft coral *Scleronephthya* sp.
- 20c Hard coral *Acropora* cf. *arcuate* [sic *arcuata*]
- 20c Orange soft coral, Order Malacalcyonacea *Scleronephthya* sp.
- \$1.50 Purple hard plate coral *Fungia* cf. *scutaria*
- 20c Yellow soft leather coral *Lobophytum* sp.
- \$1.50 Hard Cauliflower coral *Pocillopora* cf. *verruose*
- \$1.50 Pink, hard, lobed brain coral *Lobophyllia* cf. *hemprichi*
- 20c Soft tree coral *Dendronephthya* sp.
- \$1.50 Hard coral *Montipora* sp.
- 20c Yellow soft tree coral *Dendronephthya* sp.

The picture quality of the previews was poor – so images will be posted in a later column.

Source: <https://australiapostcollectables.com.au/stamp-issues/corals-of-cocos-keeling-islands>. and https://australiapostcollectables.com.au/content/dam/auspost_corp_microsites/collectables/stamp-bulletin/2025/stamp-bulletin-395/2025-stamp-bulletin-395.pdf.



ENTOMOLOGY

Editors

Don Wright BU 243
and Jose Reis BU 1889



New Listings

Scott#	Denom	Common Name/Scientific Name	Family/Subfamily	Code
ANTIGUA & BARBUDA				
2024 December 12 (Stylized INSECTS)				
a, \$2.		Stylized LADYBIRD BEETLE	Coccinellidae	A
b, \$3.		Stylized FLY	Diptera	A
c, \$4.		Stylized BEE	Apidae	A
d, \$5.		Stylized INSECT	Insecta	A
e, \$6.		Stylized DRAGONFLY	Odonata	A
\$14.		BUTTERFLY	Lepidoptera	B
		Margin: About 30 stylized INSECTS	Insecta	Z
ARMENIA				
2024 December 30				
c, 500d.		Oriental Hornet, <i>Vespa orientalis</i> L.	VES, Vespinae	A
BELARUS				
2024				
a, M rate.		Burying Beetle, <i>Nicrophorus vespillo</i> L.	SIL, Nicrophorinae	B
b, M rate.		<i>Ampedus sanguineus</i> L.	ELA, Elaterinae	B
c, M rate.		Violet Oil Beetle, <i>Meloe violaceus</i> L.	MEL, Meloinae	B
d, M rate.		Green Looper, <i>Chrysodeixis eriosoma</i> Dbldy	NOC, Plusiinae	B
e, M rate.		Common Scorpionfly, <i>Panorpa communis</i> L.	PAN, Panorpinae	B
CARIBBEAN NETHERLANDS - ST. EUSTATIUS				
2025 March 31				
a, 1st.		Caribbean Blue, <i>Cyclargus thomasi</i> Clench	LYC, Polyommatae	A
b, 1st.		Painted Lady, <i>Nymphalis cardui</i> L.	NYM, Nymphalinae	A
c, 1st.		Manuel's Skipper, <i>Polygonus savigny</i> Latreille	HES, Pyrginae	A
d, 1st.		Longtail Skipper, <i>Urbanus proteus</i> L. & UL margin	HES, Pyrginae	A
e, 1st.		Cloudless Sulfur, <i>Phoebis sennae</i> L. & with larva	PIE, Coliadinae	A
g, 1st.		Tropical Buckeye, <i>Junonia evarete</i> Cramer	NYM, Nymphalinae	A
h, 1st.		Banded Yellow, <i>Eurema elathea elathea</i> Cramer	PIE, Coliadinae	A
i, 1st.		Scarce Hairstreak, <i>Strymon istapa</i> Reakirt	LYC, Theclinae	A
j, 1st.		Florida Leafwing, <i>Anaea troglodyta</i> Fabr.	NYM, Charaxinae	A
FINLAND				
2025				
5x1st.		4 Stylized BUTTERFLIES with croquet players	Lepidoptera	B
GREAT BRITAIN				
2023 July 13				
4396, 2nd.		Beautiful Demoiselle, <i>Calopteryx virgo</i> L.	CAL, Calopterinae	A
4399, 1st.		Common Mayfly, <i>Ephemera danica</i> Mueller	EPH, Ephemerinae	A
2024 (Garden Wildlife)				
1st.		Buff-Tailed Bumblebee, <i>Bombus terrestris</i> L.	API, Apinae	B
Isle of Man				
2024 September 16 (Flora)				
£1.60.		<i>Bombus</i> sp., BUMBLEBEE, on a flower	API, Apinae	B
Jersey				
2024 October 3				
£1.65.		Western Honeybee, <i>Apis mellifera</i> L., on a flower	API, Apinae	B

LESOTHO	2023 January 31 (Correction)		
M8. 11-Spot Ladybird, <i>Coccinella undecimpunctata</i> L.,		COC, Coccinellinae	A
MYANMAR	2025 March 19		
200k. Red Lacewing, <i>Cethosia biblis</i> Drury		NYM, Heliconiinae	A
At LR: Monarch, <i>Danaus plexippus</i> L.		NYM, Danainae	B
NETHERLANDS	2024 November 16 (Underwater World)		
a,e. 1st. Great Diving Beetle, <i>Dytiscus marginalis</i> L.		DYT, Dytiscinae	A
c. 1st. Mosquito larva		Culicidae	A
NEW ZEALAND	2025 March 7 (Native Pollinators)		
a, \$3.60. Native Bee, <i>Leioproctus pango</i> Donovan		COLL, Colletinae	A
b, \$4.90. Flower Longhorn, <i>Zorion guttigerum</i> Westwood		CER, Cerambycinae	A
POLAND	2024 February 21		
a, 3.90zł. Atlas Moth, <i>Attacus atlas</i> L.		SAT, Saturniinae	A
b, 3.90zł. <i>Zaretis itys</i> Cramer		NYM, Charaxinae	A
c, 3.90zł. Orange Oakleaf, <i>Kallima inachus</i> Doyere		NYM, Nymphalinae	A
d, 3.90zł. Cape York Birdwing, <i>Troides priamus</i> L.		PAP, Papilioninae	A
RUSSIA	2024 April 27		
b, 70r. Splay-foot Carpenter Bee, <i>Xylocopa valga</i> Gerstaecker		API, Xylocopinae	A
	2025 April 30		
a, 24r. Schrenck's Emperor, <i>Mimathyma schrenckii</i> Menetries		NYM, Apaturinae	A
b, 24r. Dragon Swallowtail, <i>Sericinus montela</i> Gray		PAP, Parnassiinae	A
c, 24r. <i>Luehdorfia puziloi</i> Erschoff		PAP, Parnassiinae	A
d, 24r. Mencia Swallowtail Moth, <i>Epicopeia mencia</i> Moore		EPIC, Epicopeiinae	A
SINT MAARTEN	2025 May 12 (Butterflies)	Set/10	
a, 305c. Polydamas Swallowtail, <i>Battus polydamas</i> L.		PAP, Papilioninae	A
b, 305c. Indian Leaf Wing, <i>Kallima paralekta</i> Horsfield		NYM, Nymphalinae	A
c, 175c. Silver-Band Hairstreak, <i>Chlorostymon simaethis</i> Drury		LYC, Theclinae	A
d, 175c. Painted Lady, <i>Vanessa cardui</i> L.		NYM, Nymphalinae	A
e, 175c. Gulf Fritillary, <i>Dione vanillae</i> L.		NYM, Heliconiinae	A
f, 175c. Tropical White, <i>Appias drusilla</i> Cramer		PIE, Pierinae	A
g, 305c. Gray Ministreak, <i>Ministrymon azia</i> Hewitson		LYC, Theclinae	A
h, 305c. Tropical Buckeye, <i>Junonia genoveva</i> Cramer		NYM, Nymphalinae	A
i, 305c. White Peacock, <i>Anartia jatrophae</i> Johansson		NYM, Nymphalinae	A
j, 305c. Great Southern White, <i>Ascia monuste</i> L.		PIE, Pierinae	A
SLOVENIA	2024 November 22 (Human Senses)		
€2.98. Stylized BUTTERFLY silhouette. 2 more in UL margin		Lepidoptera	B
SWITZERLAND	2024		
120c. Stylized BUTTERFLY on a hand		Lepidoptera	B
TONGO PEOPLES REPUBLIQUE			
Non-existing country used to issue illegitimate topical stamps.			
WALLIS & FUTUNA	2025 January 31		
135fr. Coconut Stick Insect, <i>Graeffea crouanii</i> Le Guillou		PHAS, Platycraninae	A
ZIMBABWE	2023		
a, \$2. Amber Phantom, <i>Haetera piera</i> L. & in R margin		NYM, Satyrinae	A
b, \$2. Crimson Rose, <i>Atrophaneura hector</i> L.		PAP, Papilioninae	A
c&d, \$2. BUTTERFLIES. Also in UL, UR & LR margins		Lepidoptera	A

BEYOND THE CATALOGS:

Stamps not recognized by standard catalogs and many are of doubtful validity.

Stamperija Issues: For further details, contact editor Don at: aa2f@arrl.net

- Central Africa, CA-22,0817b, 2022, Ants
- Central Africa, CA-23,0834b2, 2023. Butterflies
- Chad, TCH-23,0100a&b, 2023. Insects
- Chad, TCH-23,0116a&b, 2023. Insects
- Djibouti, DJB-23,0100b1, 2023. Moths
- Djibouti, DJB-23,0420a, 2023. Butterflies
- Djibouti, DJB-24,0114b, 2024. Darwin & Beetles
- Djibouti, DJB-24,0120a, 2024. Insects
- Djibouti, DJB-24,0162a, 2024. Bees in bird's beaks
- Djibouti, DJB-24,0169a&b1-2, 2024. Hercules Moth
- Djibouti, DJB-24,0170a, b1&2, 2024. Bulldog Ants
- Djibouti, DJB-24,0172a-af, 2024. Butterflies
- Djibouti, DJB-24,0173a-af, 2024. Bees
- Djibouti, DJB-24,0175a,b2, 2024. Dinosaur with Bee & Giant Dragonfly
- Djibouti, DJB-24,0206d1-4, 2024. Butterflies
- Djibouti, DJB-24,0207a, 2024, s/t of 6. Butterflies
- Djibouti, DJB-24,0***, 2024, s/t of 10. Butterflies
- Guinea, GU-24,01108d, 2024. Butterfly
- Guinea, GU-24,01145a, 2024, s/t of 6. Bees
- Guinea, GU-24,01147a,b1&2, 2024. s/t of 6. Beetles
- Guinea-Bissau, GB-23,0100a, 2023. Beetles
- Guinea-Bissau, GB-23,0141a, 2023. Beetles
- Guinea-Bissau, GB-23,0200a, 2023, Insects
- Guinea-Bissau, GB-23,0228b2, 2023. Insects
- Guinea-Bissau, GB-23,0813a, 2023. Insects
- Guinea-Bissau, GB-23,0834a, 2023. Insects
- Guinea-Bissau, GB-23,0836a, 2023. Insects
- Guinea-Bissau, GB-23,0868a, 2023. Butterflies
- Guinea-Bissau, GB-23,****, 2023. Honeybees
- Guinea-Bissau, GB-24,0145a, b1&2, 2024. Lepidoptera
- Guinea-Bissau, GB-24,0147b1&2, 2024. Bees
- Guinea-Bissau, GB-24,0148a,b1, 2024. Margin: Flies
- Guinea-Bissau, GB-24,0153a, b1&2, 2024. Insects
- Guinea-Bissau, GB-24,0154a, 2024. Lepidoptera
- Guinea-Bissau, GB-24,0155a, b1&2, 2024. Insects
- Guinea-Bissau, GB-24,****, 2024. Insects
- Guinea-Bissau, GB-23,****, 2023. Honeybees
- Guinea Rep., GU-23,0215b, 2023. Wasps
- Guinea Rep., GU-24,01144a,b1&2, 2024. Butterflies
- Guinea Rep., GU-24,01150a,2024. Butterflies
- Liberia, LIB-23,0120a, 2023. Beetles
- Liberia, LIB-23,0218a, 2023. Butterflies
- Liberia, LIB-24,0175a, 2024. Beetles
- Liberia, LIB-24,0186a, 2024. Butterflies
- Liberia, LIB-24,0189b, 2024. Beetles

Niger, NIG-23,0125a, 2023. Butterflies
Niger, NIG-23,0324a&b, 2023. Butterflies
Sierra Leone, SRL-23,0137b2, 2023. Insects
Sierra Leone, SRL-23,0138b1, 2023. Lepidoptera
Sierra Leone, SRL-23,0313b, 2023. Insects
Sierra Leone, SRL-23,0314a, 2023. Moths
Sierra Leone, SRL-23,0455a, 2023. Butterfly
Sierra Leone, SRL-23,0515b, 2023. Flies
Sierra Leone, SRL-23,0647a, 2023. Insects
Sierra Leone, SRL-23,0648a,b, 2023. Scorpionflies
Sierra Leone, SRL-24,01052b1, 2024. Extinct Dragonfly
Sierra Leone, SRL-24,01060b1, 2024. Beetles
Sierra Leone, SRL-24,01061a,b1, 2024. Lepidoptera
Sierra Leone, SRL-24,01062a,b1, 2024. Horseflies
Sierra Leone, SRL-24,01070a,b1&2, 2024. Beetles
Sierra Leone, SRL-24,01071b,b1, 2024. Insects
Togo, TG-23,0116a, 2023. Butterflies
Togo, TG-23,0117a&b, 2023. Siricid wood wasps
Togo, TG-23,0118a, 2023. Insects
Togo, TG-23,0219a&b, 2023. Insects
Togo, TG23,0320a&b, 2023. Beetles
Togo, TG-23,0322b, 2023. Insects
Togo, TG-23,0336a&b, 2023, Carabid beetles
Togo, TG-23,0337a&b, 2023. Wasps
Togo, TG-23,0500a, 2023. S/T of 3. Insects
Togo, TG-24,01075a&b, 2024. Butterflies
Togo, TG-24,01078a, 2024. Butterflies
Togo, TG-24,01079a,b2, 2024. Bees
Togo, TG-24,01080a,b1&2, 2024. Insects
Togo, TG-24,01083a, 2024. Butterflies
Togo, TG-24,01084a, 2024. Butterflies



PALEONTOLOGY

Editor

Michael Kogan, BU 1863



Scott Numbers assigned to the previously reported stamps

China "Chengjiang Fossil Sites"

reported in Vol. 73(2), got the Scott number: 5036-5038 Scott Update March 2025

Kyrgyzstan (KEP) " Prehistoric animals of Kyrgyzstan"

reported in Vol. 73(2), got the Scott number: 184-186 Scott Update May 2025

More details: https://www.paleophilatelie.eu/description/stamps/kyrgyzstan_2024.html

New Issues

GREAT BRITAIN: Jersey

2025 05 05 "Europa: Archaeological Discoveries"

One of the six stamps show a skull of a mammoth.

£3.00 - Mammoth Bones

More details: [https://](https://www.paleophilatelie.eu/description/stamps/jersey_2025.html)

www.paleophilatelie.eu/description/stamps/jersey_2025.html



GIBRALTAR 2025 05 08 "Europa: Archaeological Discoveries - Neanderthal "

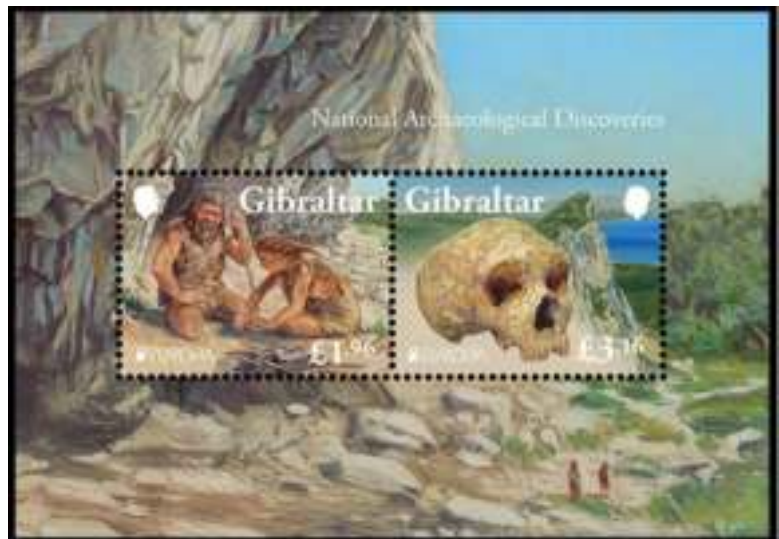
£1.96 - Reconstructions of Neanderthal

£3.16 - Neanderthal skull

These stamps issued in the Mini-Sheets of 6 and the Souvenir-Sheet of 2

More details: [https://](https://www.paleophilatelie.eu/description/stamps/gibraltar_2025.html)

www.paleophilatelie.eu/description/stamps/gibraltar_2025.html



SAN MARINO 2025 02 11 "Europe - National Archaeological Discoveries"

€2.45 - *Titanocetus sammarinensis*

More details: https://www.paleophilatelie.eu/description/stamps/san_marino_2025.html



Note:

In March 2025, the Post Authority of France announced the issue of their Europa stamp, featuring a sauropod dinosaur. In the following month, the Sauropod stamp of France was replaced, as inappropriate to the Archaeological Discoveries topic. Although 720,000 copies have already been printed, they will not be released. A new design, illustrating a recent archaeological discovery (a vase), was issued instead.

Other Stamps to consider

GERMANY 2025 05 09 “National Archaeological Finds: UNESCO World Heritage: Caves and Ice Age Art of the Swabian Alb” S/S 1 €0.95 – many Ice Age art figures on the stamp and on the selvage. More details: https://www.paleophilatelie.eu/description/stamps/others/germany_2025.html



MONACO 2025 05 09 “Europa 2025 - National Archaeological Discoveries” €2.10 – the Observatory Cave and various artefacts. More details: https://www.paleophilatelie.eu/description/stamps/others/monaco_2025.html

SPAIN 2025 03 27 “Altamira Research Center Museum”

€1.85 – strip of a stamp and a label – one of the cave paintings from the Altamira cave shown on the stamp.

TUNISIA 2024 18 12 “City of sciences in Tunis”

0.75d and 3.0d – various buildings of the city

Stylized dinosaur and ammonite are shown on the cachet of the official FDC



The City of Sciences in Tunisia opened its doors in 1992 as a monument to Tunisia's scientific culture and a dynamic space for anyone interested in scientific discovery. The City is built on six hectares surrounding a historical and archaeological site. It welcomes at least 200,000 visitors annually to participate in a variety of events, interactive exhibits, and educational workshops. Several dinosaur casts are displayed in and out of the "Life and Humanity" Hall, which explores the history of life on Earth and human evolution.

More details: https://www.paleophilatelie.eu/description/stamps/others/tunisia_2024.html

---- Stamps of Stamperija ----

Note: Since 2012 the agency issues too many stamps per year on behalf of a dozen of their clients for every possible popular topic, prehistoric animals. In most of the cases these stamps have no relation to the issuing country. Reconstructions of the prehistoric animals are often not accurate.

These stamps are not recommended for serious collectors and are undesired at serious philatelic exhibits.

- DJIBOUTI 2024 05 03 "Dinosaurs" S/S 1 x4
2024 05 24 "Extinct species" M/S 4 , S/S 1 x2
- GUINEA 2024 03 07 "Prehistoric water animals" M/S , S/S 1 x2
"Prehistoric reptiles" M/S 6 , S/S 1 x2
"Prehistoric humans" M/S 6 , S/S 1 x2
"Dinosaurs" M/S 6 , S/S 1 x2
- GUINEA-BISSAU 2024 03 28 "Dinosaurs" M/S 6 x2
"Prehistoric water animals" M/S 8
"Dinosaurs" M/S 3 , S/S 1 x2
"Prehistoric reptiles" M/S 3 , S/S 1 x2
- SIERRA LEONE 2024 02 12 "Dinosaurs" M/S 5, M/S 6, S/S 1 x2
"Prehistoric water animals" M/S 6 , S/S 1 x2
"Prehistoric reptiles" M/S 6 , S/S 1 x2
"Fauna of the Carboniferous Period" M/S 6 , S/S 1 x2

Postmarks

INDIA 2025 02 12 "Marine Fossils"



Future issues

- 03.09.2025 Poland - "Dinosaurs" - set of 3 stamps (postponed from 2023).
- 03.11.2025 Taiwan – "Dinosaurius" – Souvenir-Sheet
- ?? .12.2025 Peru - "Prehistoric Animals".
- ?? .2025 Kyrgyzstan - "Prehistoric fauna of Kyrgyzstan".

Notes:

If you know about any recent or feature Paleontology related stamp not listed above, please send a short message to our Associated Editor Mr. Michael Kogan admin@paleophilatelie.eu or per post to the magazine, address is on the beginning of the magazine.

Images and description of all stamps, postal stationeries and postmarks mentioned above can be seen on the following website : <http://www.paleophilatelie.eu/year/2024.html> and <http://www.paleophilatelie.eu/year/2025.html>

<https://www.paleophilatelie.eu> is the most comprehensive resource about Paleontology and Paleoanthropology in Philately, the place where Paleontology and Paleoanthropology meets Philately.

Currently this website shows images of over 1000 stamp sets and over 1600 postmarks, as well as some other philatelic materials from almost 200 countries and territories. The website contains many hundreds of articles related to this topic and many examples of philatelic exhibits



2025 Biology Unit Ballot

The following are candidates for officers of the Biology Unit of the ATA. They will serve two-year terms. Please mark your ballot and return it to the address below, or fill in the boxes electronically and print and mail, or email the completed form to chris-dahle@biophilately.org.

For President: Laurie Ryan	<input type="checkbox"/>
Write-in	<input type="text"/>
For Vice President: Glenn Mertz	<input type="checkbox"/>
Write-in	<input type="text"/>
For Secretary: Chris Dahle	<input type="checkbox"/>
Write-in	<input type="text"/>
For Directors (Vote for 4):	
Michael Kogan	<input type="checkbox"/>
john Pereira	<input type="checkbox"/>
Dick Roman	<input type="checkbox"/>
Don Wright	<input type="checkbox"/>
Write-in	<input type="text"/>
	<input type="text"/>
	<input type="text"/>
	<input type="text"/>
	<input type="text"/>

Chris Dahle
1650 Koehler Dr NW, Unit 240
Cedar Rapids, IA 52405