

# BIOPHILATELY

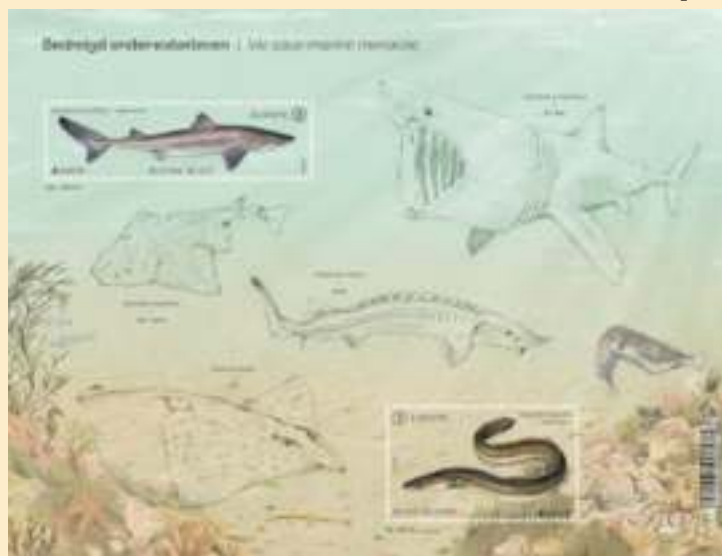
OFFICIAL JOURNAL OF THE BIOLOGY UNIT OF ATA  
JUNE 2024 VOLUME 73 NUMBER 2



Under Water



Europa 2024



## IN THIS ISSUE

From the Editor's Desk.....	53
President's Message.....	54
Secretary's Corner.....	54
News of Note.....	55
Sweden's National Flower.....	66
Swiss Natural Patterns.....	77
Australian Ground Parrots.....	91

### NEW ISSUES

Botany – Christopher E. Dahle.....	67
Fungi – Paul A. Mistretta.....	77
Mammalia – Michael Prince.....	82
Ornithology – Glenn G. Mertz.....	84
Invertebrates – Peter J. Voice.....	97
Entomology – D. Wright & J. Reis.....	99
Paleontology – Michael Kogan.....	103

### ARTICLES:

Upcoming Issues of Interest – Europa Stamps Edition: Part 1 by Peter Voice.....	57
The Largest Butterfly on the Planet by Vladimir Kachan.....	54
Caveat Emptor (Part 13): 2008-2009 by Paul Mistretta.....	78
New Plants in the Philatelic Herbarium – Christopher Dahle.....	75
New Birds in the Philatelic Aviary – Charles E Braun.....	92

**BIOPHILATELY****Editor**

Christopher E. Dahle  
1401 Linmar Dr NE, Cedar Rapids, IA 52402  
chris-dahle@biophilately.org

**Associate Editors**

Christopher E. Dahle *Botany*

Dr. Paul A. Mistretta *Fungi*  
4148 Commodore Dr., Atlanta, GA 30341  
paulmistretta70@gmail.com

Michael J. Prince *Mammalia*  
7 Station Rd, Whitchurch, Hampshire RG28 7EP UK  
Michael.Prince@bushinternet.com

Glenn G. Mertz *Ornithology*  
625 N. Lafayette St, Allentown, PA 18104  
gmertz43@gmail.com

Charles E. Braun *New Birds*  
4202 Exum Drive, West Columbia, SC 29169  
charlesebraun@gmail.com

Dick Roman *Herpetology*  
Dick.Roman@SbcGlobal.Net

Harvey Robbins *Ichthyology*  
ihrobbins@sympatico.ca

Peter Voice *Invertebrate Zoology*  
petervoi@yahoo.com

Donald P. Wright, Jr. *Entomology*  
8301 Old Sauk Rd, Apt 175, Middleton, WI 53562  
don.aa2f@verizon.net

Michael Kogan *Paleontology*  
Munich, Germany  
admin@paleophilatelie.eu

Vacant *Microbiology*

**BIOLOGY UNIT OF ATA**

Laurie J. Ryan **President**  
4134 Wenbrook Dr, Sharonville, OH 45241  
doxiemom7@gmail.com

Glenn G. Mertz **Vice-President**  
625 N. Lafayette St., Allentown, PA 18104  
gmertz43@gmail.com

Christopher E. Dahle **Secretary/Treasurer**  
1401 Linmar Dr. NE, Cedar Rapids, IA 52402  
chris-dahle@biophilately.org

**Directors**

John Pereira (Massachusetts)  
Michael Kogan (Germany)  
Donald P. Wright, Jr. (Wisconsin)  
Dick Roman (Missouri)

**Publisher****Librarian**

Mark Reineke  
925 Boychuk Drive, Saskatoon, SK S7H 4L6 Canada  
mikadoate@sasktel.net

**Website**

**www.biophilately.org**

The Biology Unit, founded in 1951, is a study unit of the American Topical Association dedicated to the international cooperative study of biological postage stamps and related material.

Electronic versions of back copies of Biophilately are available on our website, or from the Librarian on request. Please contact the individual associate editors if you have queries about the content of their columns.

Send membership enquiries and change of address notices to the secretary, Chris Dahle, (319) 364-4999, address above. See the following page for dues rates.

Copyright 2022. All rights reserved. The views expressed in the articles and other contributions are those of the authors and do not necessarily reflect the views of the officers or other members of the Biology Unit.

The purpose of this journal is to provide members with informative articles dealing with biological topics and to publish listings covering the new **zoological** and **botanical** issues of the world, identified and classified to the best of our ability.

Please send letters, comments on the journal, articles, or new material to the editor (data above). The editor will handle requests for issues from the current year. Contact the librarian (address above) for copies of all other issues.

The term Scott and Scott Catalogue numbers are trademarks of Amos Media., dba Scott Publishing Company.

**PLEASE NOTE: Material for the next issue should be in the hands of the editor by 15 August 2024.**



## FROM THE EDITOR'S DESK

Chris Dahle, BU 1269

The annual meeting of the Biology Unit is coming up. It will be held at the Great American Stamp Show in Hartford in August. Please come. And please help the ATA by signing up to volunteer at the ATA booth. The Biology meeting will be on Saturday morning. More information can be found in the News section and the Secretary's Corner. The ATA is also planning a celebration of its 75th anniversary. The Biology Unit was one of the first Study Units, so its 75th is coming up in a couple of years.

The theme for the 2024 Europa stamps is "Underwater Fauna and Flora." What a wonderful addition to the focus of our Study Unit! Peter Voice has put together descriptions of some of the issues released to date. More will be forthcoming over the course of the year, as other postal administrations provide their contributions. Sometimes there is a single stamp, as in the case of Poland. But in general, a pair is issued, and some postal authorities will even release six or eight stamps. Peter has graciously allowed the Europa Study Unit to use the article for their publication.

I am using another article on butterflies from Vladimir Kachan again in this issue. Michael Kogan and Peter Voice have been wonderful supplying articles for publication. If anyone else has a manuscript they would like to see in print, please send it to me.

For several months I have been receiving email updates from Tom Fortunato, the public relations chair for Boston 2026. This is an international show held once every 10 years, and in 2026 it coincides with the 250th anniversary of the founding of the United States. It is going to be a BIG deal! Many of you are probably aware that philatelic societies large and small across the country, including the ATA, have already made financial contributions to make the show a success. There is a link on the News page to the show's web site.

*Chris*

### DUES RATES (US\$)

On-line membership \$20

### ADVERTISING RATES

Full page insertion \$25

Half page insertion \$15

Quarter page insertion \$10

Please see the Biology Unit web site ([www.biophilately.org](http://www.biophilately.org)) for membership applications. Several payment options are available. Send applications and payments payable to the Biology Unit of ATA to Chris Dahle, 1401 Linmar Dr NE, Cedar Rapids, IA 52402



### **PRESIDENT'S MESSAGE**

I hope this issue finds you all doing well. Today is such a beautiful sunny day. We have to enjoy the sunny days, as they are so rare this Spring. I put together a few hanging baskets of annuals to place around the garden. The ground is still too wet for me to do much digging. The late spring flowers are in full bloom. The iris are spectacular this year. Also blooming are peonies, clematis, penstemon, salvias, and roses. I just love the color they all bring to the yard. Many more are getting ready to bloom. But also prolific are the weeds! One in particular is all over, but the bees are crazy for the little flowers. I may have to leave a few plants for them. We need to do all we can to promote and protect the bee populations.

The two puffer fish are getting along wonderfully. I moved the to a slightly larger tank and they are adjusting to their new surroundings. Both have found their own little cubby hole to hang out in. I love watching them fight over snails, it is like watching two kids fight over a toy or the last piece of some food. Have you ever made an impulse buy and then thought "What the heck did I just do. What was I thinking?" Well, I sure did in March at the Aquarium Society's last auction. I am now the owner of a very cute Axolotl. They are one of the few amphibian species not on an endangered list. Unlike other amphibians, axolotls never lose their external gills. Other species will go through metamorphosis to become adults, the gills are absorbed as lungs develop internally. I love watching him explore the rocks and caves in his tank. I placed a small bowl in the aquarium for food. He is learning that it is where dinner is placed. Oh, my niece named him Smaug as she thought he looked like a dragon. There are a number of axolotl stamps available. So far I have found five of them, the hunt is on!

Have a safe, fun summer.

Laurie

### **SECRETARY'S CORNER**

Closed Album: Norma McCumber was the Vice President of the Biology Unit in 1997-98 and President 1998-2002. Notice of her death appeared in the American Philatelist in April 2024.

### **ANNUAL MEETING**

The Biology Unit of the American Topical Association will convene for its annual meeting at the Great American Stamp Show on Saturday, August 17 at 10:00 a.m. in Room 24 of the Connecticut Convention Center, 100 Columbus Blvd, Hartford, CT.

**News of Note****GREAT AMERICAN STAMP SHOW, August 15-18, 2024**

Connecticut Convention Center, Hall AB, 100 Columbus Blvd., Hartford, CT 06103

In case you do not receive email from the ATA, here is the announcement from May 10:

Be sure to preregister for the show here to save time when you arrive. Preregistration closes July 31st. The three show hotel blocks are sold out. (This will be a big show!) There might be rooms available at The Capitol Hotel, 440 Asylum St, Hartford. Call 1-959-888-3000. Don't delay!

**Please Help at the ATA Booth**

The ATA booth is a busy place at the Great American Stamp Show. Will you share some of your time to volunteer at the booth to greet visitors and tell them about ATA services and memberships? It's fun to chat with topical collectors and share our enthusiasm for topical stamps and ATA.

[Register online](#) and indicate the shifts you would be willing to work. When we get closer to the show, a schedule will be sent out to all who registered. Thank you for your help!

The American Topical Association also provides a booth for our study units at the show. Study units are invited and encouraged to take time working in the booth to meet people and recruit new members for your organizations.

To make this possible, we must have the booth manned 80% of the show. Please sign up for shifts and encourage others in your groups to sign up as well (even if they are not ATA members).

**GASS Sponsorships**

We have many fun activities and giveaways planned for the show this special year. We have many generous members who show their support each year by becoming show sponsors. You may see the list of sponsors and sponsorship opportunities on our website. Thank you for your generous support!

**ATA's Annual Meeting and Birthday Celebration!**

[You are invited to join us for a celebration of ATA's 75th birthday!](#)

Friday, August 16, 2024 at 2:00 pm at the Convention Center in Hartford, CT

There will be giveaways and treats, so we need to have an idea of how many will be attending. Please, register online so we have enough goodies for everyone!

We are very excited to have you at our birthday party. A good number have already registered. Make sure to get your name on the list!

We look forward to seeing you there!

**President's Reception**

[Please join us for the ATA President's Reception!](#)

Friday, August 16, 2024 6:30 p.m. EDT  
Cost \$70. Deadline to register is August 1, 2024.

Peppercorn's Grill is the setting for this year's President's Reception. The event space is located at 357 Main Street in Hartford. We'll meet in the lobby of the Marriott at 6 p.m. and walk together (1/2 mile), or you can share a cab.

We'll kick off the evening with conversation and a cash bar. Dinner will be served shortly after. Entree choices and registration are on the ATA web site.



## EXPOFILABRAS 2024 (Virtual Philatelic Exhibition)

The "Paleophilatelie" website was awarded a GOLD Medal (10 of 10 points) and a Special Award at EXPOFILABRAS 2024 - Virtual Philatelic Exhibition, organized by the Brazilian Philatelic Federation.

The main objective of EXPOFILABRAS 2024 was to promote Philately via the Internet and to encourage/train new philatelists, the exhibition being a fraternization between philatelists and the general public, with a didactic and cultural nature.

The exhibition contained 155 participants from 33 countries, with 249 exhibitions, among collections in 3 categories/classes: general collections, philatelic literature and websites. According to the organizers, during the show, over 6,700 unique visitors accessed over 15,000 pages of the exhibition.

This is much more as it was reported by organizers of the Great American Stamp Show 2023 (GASS23). The GASS23, in Ohio, US was visited by approximately 2,500 attendees.

The unique feature of the exhibit was public/popular voting on the internet.

Over 6.000 were received from the visitors of the exhibition. The vote was open between April 6th and April 25th, the vote results and the Palmares were published on May 1st 2024. All exhibits will stay on-line indefinitely.

In their feedback, about the "Paleophilatelie" website, the jury wrote:

*A benchmark website by which others are judged. This is THE reference site for the topical collector in this field. Content meets purpose 100%. Hard to find fault...*

### Boston 2026 Bulletin #1 Available

Bulletin #1 for Boston 2026 World Expo has just been released in digital format and is available for viewing and downloading at [Boston2026.org](https://Boston2026.org).

This first of two expected bulletins contains over 50 pages introducing readers to the composition of the one-a-decade U.S. international exhibition through the people and organizations making it possible.

Boston 2026 World Expo takes place May 23-30, 2026, at the Boston Convention & Exhibition Center. Full show details may be found at [Boston2026.org](https://Boston2026.org) and on Twitter and Facebook. Sign up to be added to the Boston 2026 email list and receive updates when available.



## Upcoming Issues of Interest – Europa Stamps Edition: Part 1

Peter Voice

The Europa 2024 common theme is Underwater Flora and Fauna. This is a joint program between the European nations to issue stamps highlighting a specific theme each year. The program started in 1956 and has grown from 6 countries to over 50 countries participating. This year's theme, Underwater Flora and Fauna explores the organisms living in the waterways of Europe including both marine settings and freshwater streams and ponds. Many of the issues are based on underwater photographs of the animals and plants in their natural environments, others are more stylized artwork.

Images were taken from WOPA.com, <https://europa-stamps.blogspot.com>, or from the Postal Services of the individual countries.

To kick off the series, the island of Jersey issued the first set on January 8th with a set of 8 stamps and a souvenir sheet with 2 stamps. Not only the first to be issued, but also the first to be recognized with formal Scott Catalog numbers – Jersey 2652-2659. This set includes the Snakelocks Anemone (*Anemnia viridis*) [60p], the alga Bladder Wrack (*Fucus vesiculosus*) [98p], the common limpet (*Patella vulgate*) [98p], the Compass Jellyfish (*Chrysaora hysocella*) [£1.65], the Flat Periwinkle (*Littorina obtusata*) [£2.15], the Sea Lettuce (*Ulva lactuca*) [£2.95], the Carrageen (*Chondrus crispus*) [£3.75], and the Great Scallop (*Pecten maximus*) [£4.85]. All the species shown live in the Channel along the bays of the island of Jersey. Most are animals that live attached to rocky substrates in shallow water. The Souvenir sheet (SC 2566a) includes the Bladder Wrack and Flat Periwinkle stamps – which are the two stamps in this set that bear the Europa logo.



The Isle of Man issued a stamp on March 7th highlighting the Atlantic Cod (*Gadus morhua*) [£1.28], an important commercial fish. The North Sea hosts the largest population of cod in the Northern Atlantic and is fished by the European Union, British, and Norwegian fleets. The stamp chosen as the Europa submission is part of a larger set of 6 stamps, highlighting the artwork of Kimmy McHarrie. McHarrie creates mosaics, in this case selecting fish found in Manx waters to recreate in her art. The other issues highlight herring [85p], red gurnard [£1.82], mackerel [£1.51], john dory [2.72], and salmon [£2.31]. Her mural of a basking shark is on display at Ronaldsway Airport!



Basking Shark Mural source: <https://www.scubadivermag.com/fish-stamps-celebrate-ioms-marine-diversity/>.

Each stamp in the set was issued in 10 stamp sheetlets. The presentation pack highlights the Basking Shark mural.

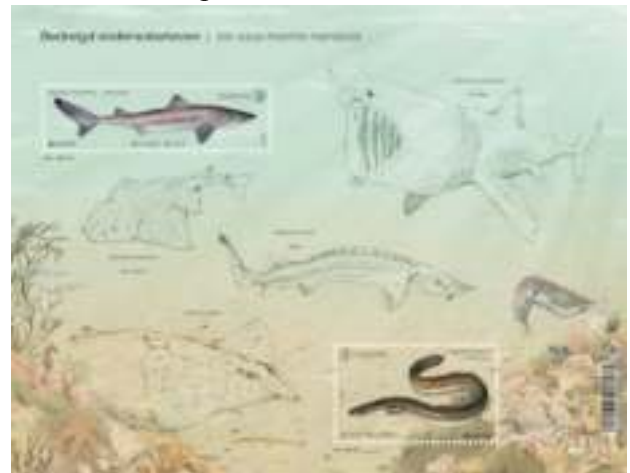
On March 19th, San Marino issued a pair of stamps highlighting freshwater animals and algae found in ponds on the Italian Peninsula. The first stamp [1.30€] shows a diving beetle of the species *Scarodytes ruffoi* and in the background the charophyte, the Common Stonewort (*Chara vulgaris*). The second stamp [2.70€] shows a juvenile of the Italian Crested Newt (*Triturus carnifex*). Juvenile Italian Crested Newts prefer deeper water in ponds where they hunt prey including other species of newts. Each stamp was issued in sheets of 12 stamps.



beetle of the species *Scarodytes ruffoi* and in the background the charophyte, the Common Stonewort (*Chara vulgaris*). The second stamp [2.70€] shows a juvenile of the Italian Crested Newt (*Triturus carnifex*). Juvenile Italian Crested Newts prefer deeper water in ponds where they hunt prey including other species of newts. Each stamp was issued in sheets of 12 stamps.



Belgium's Europa stamps were issued on April 2nd and include 2 stamps in a souvenir sheet. The first stamp shows a spiny dogfish (*Squalus acanthias*), while the second shows a European Eel (*Anguilla anguilla*). The selva of the souvenir sheet shows sketches of a variety of labeled fish including the Basking Shark (*Cetorhinus maximus*), the European Sea Sturgeon (*Acipenser sturio*), the Angelshark (*Squatina squatina*), and the Common or Blue Skate (*Dipturus batis*). Other faunal elements are not labeled but include a sea horse, cuttlefish, smaller fish, various seaweeds, and a small sea spider. Both stamps are denominated for 3rd Class mail for Europe.



As part of the Europa – Underwater Flora and Fauna Series, Bosnia and Herzegovina (Croat Post) issued a set on April 5th that highlighted the Date Shell or

Date Mussel, *Lithophaga lithophaga* and the green alga *Acetabularia acetabulum*. Both stamps are denominated as 3.50 BAM. The stamps were issued in sheets of 8 stamps – 4 of each design. The sheet includes 2 vignettes that show a line drawing of *A. acetabulum*.



Moldova issued a set that includes the European Crayfish

(*Astacus astacus*) [5MDL] on April 19th. The second stamp in the set is the beluga or Sturgeon, *Huso huso* [12 MDL]. This set

was released in two formats including 1) mini-sheets of 10 stamps for each design, and 2) booklets of 8 stamps – with 4 stamps each arranged as separate blocks. The selva of the booklets shows similar artwork to the stamps.





Romania issued their Europa stamps on April 24th. Both issues highlight fish found in the drainages into the Baltic Basin (and present across large portions of Eurasia). The stamps include the largest of the perches, the Zander (*Sander lucioperca*) which has a pikelike appearance which has led to its other common name, the pikeperch [4 RON]. The other fish shown is the Wels Catfish (*Silurus glanis*) [25

RON]. Both are prized gamefish – and have had their ranges extended artificially to provide game stocks.

Romania issued the following products for these stamps:

- 1) Two souvenir sheets with blocks of 4 stamps (2 of each) – they differ in the ordering of the 2 stamps and the color of the text on the selvage.
- 2) Each stamp was issued in a mini-sheet of 5 stamps with a vignette in the upper right position of the sheet.
- 3) Each stamp was issued in sheets of 32 stamps with vignettes in each corner of the sheet.
- 4) A limited souvenir sheet in a philatelic folder. The pair of stamps are imperforate. Only 281 copies were published. The first day postmark was imprinted in gold foil on the sheet.

The cachet of the official FDC shows the Northern Pike (*Esox lucius*).

Gibraltar issued their Europa stamps on April 25th. They used the opportunity to highlight animals found in the Northern Atlantic and the Straits of Gibraltar and include the Killer Whale (*Orcinus orca*) [£3.16] and the Loggerhead Sea Turtle (*Caretta caretta*) [£1.96]. Gibraltar released these stamps as a souvenir sheet with both stamps. In addition, each stamp was released in a mini-sheet with 6 stamps. In addition, Gibraltar released FDCs of the pair of stamps and of the souvenir sheet, Maxi-cards, and a presentation pack.



Poland also issued their Europa stamp on the 25th of April. The stamp [4.90ZŁ] was issued in sheets of 12 where the stamps are organized tête-bêche. The stamp shows the Common barbel (*Barbus barbus*), a sport fish found in streams across northern Europe. The issue highlights environmental degradation and the accumulation of heavy metals in barbel tissues.

Sweden issued a set of three stamps in a souvenir sheet that include the Harbor Porpoise (*Phocoena phocoena*), the charophyte algae *Chara tomentosa*, and the Common Jellyfish (*Aurelia aurita*) on April 25th. All three stamps are denominated 36 KR. Note that the Harbor Porpoise stamp is the only one bearing the Europa logo.



The Armenian Post of Nagorno-Karabakh issued a pair of stamps on April 26th. While this entity is not recognized by the Universal Postal Union, it does prepare Europa stamps. Unlike most



of the previous submissions, these stamps were more stylized artworks instead of realistic photographs. The first stamp shows green algae, which they label as “Dinophyta”. Following Romania, they also highlight the Wels Catfish (*Silurus glanis*) which is also found in the drainages of the Caspian Basin. Three mini-sheets of 10 stamps were issued for this set – 1 mini-sheet for each design, and a third mini-sheet with 5 stamps of each design.

Latvia released a pair of stamps on April 26th, highlighting freshwater species found across northern Europe and European Russia. The Slender Naiad or Nodding Water nymph (*Najas flexilis*) [€1.88] is found in northern Europe as well as in water bodies across the northern US and Canada. It is less common in Europe where it is considered rare in large portions of its range (and even protected by the Berne Convention). Lake Siveri in Latvia is one of the places where it is most abundant in Europe! The other stamp shows a drawing of the River Trout (*Salmo trutta fario*) [€1.91]. Each stamp was issued in mini-sheets of 10 stamps organized tête-bêche.



Lithuania released a pair of stamps on April 26th in honor of the European Crayfish and the Dwarf White Water Lily. The European Crayfish (*Astacus astacus*) is an endangered species in Lithuania, though it common in other portions of Europe. Like the European Crayfish, the Dwarf White Water Lily (*Nymphaea candida*) is found in freshwater settings in Latvia – usually in stagnant or slow-flowing waters. Both stamps are denominated €1.70. Each stamp was issued in a mini-sheet of 10 stamps.



Slovakia also issued a stamp on April 26th. This stamp [€2.10] and the official FDC highlight the fauna and flora of the lakes of the Tatra Mountains. The stamp shows an Alpine Bullhead (*Cottus poecilopus*). The cachet of the official FDC has a sketch of the narrow leaf bur-reed (*Sparganium angustifolium*), a member of the cat-tail family. The stamp was released in two formats – sheets of 8 stamps (gummed) and booklets of 6 stamps (self-adhesive).

Germany issued one of the more unusual contributions to the



Europa theme this year on May 2nd – in that it does not actually show any specific floral and faunal elements of the German waterbodies on the stamp [€0.85]. This product was sold in sheets of 10 stamps tête-bêche.

Switzerland issued a set on May 2nd. Each stamp shows a snapshot of the fauna and flora of one water body. In the image below, the stamp on the left shows a scene from Lake Thun, with the freshwater whitefish, *Coregonus alpinus*, a charophyte algae, and a pair of *Anodonta*, freshwater mussels. The





other stamp shows a scene from the Doubs River and includes the fish, Rhone Streber (*Zingel asper*), the European freshwater crayfish (*Austropotamobius pallipes*), and the common water moss (*Fontinalis antipyretica*). Both stamps are denominated 1.20 CHF. The stamps were released in sheets of 16 with the stamps se-tenant.

Like Germany, Austria will issue another unusual stamp [€1.20] showing an underwater photograph from the Green Lake (Grüner See) near Tragöß-St. Katharein. The lake is a karst lake in the Austrian Alps famous for its emerald green waters. The stamp will be released on May 4. They appear to have been released in sheets of 50 stamps.



On May 6th, Cyprus Post will release a pair of stamps for the Europa theme. These two stamps are more generalized – and Cyprus Post's press release does not provide much information about the issues. One issue shows green algae [€0.34], while the other shows a close up view of a sea anemone [€0.64]. The cachet of the official FDC shows a starfish, green algae, and a sea horse, while the postmark also highlights marine animals. Cyprus will issue these stamps in 2 formats: each stamp will be

released in a mini-sheet of 8 stamps and a booklet of 8 stamps (4 of each – lacking perforations on one side).



The Turkish Post of the Turkish Republic of Northern Cyprus issued their Europa stamps on May 6th. Like Armenian Post of Nagorno-Karabakh, Northern Cyprus is not recognized by the Universal Postal Union. Not much information on this pair of stamps has been released yet by the Turkish Post of Cyprus. Both stamps are denominated 17 TRY. The set was issued as a mini-sheet of 8 stamps (4 of each stamp) and the stamps are arranged tête-bêche. A variety of fish, corals, and octopie are shown on the pair of stamps.

The Czech Republic will issue an attractive stamp on May 7th showing a mix of animals from Czech ponds. The prominent faunal element is a pike on the right. On the left is a perch. Above the perch are a pair of northern crested newts, *Triturus cristatus*. Below the perch, is the narrow-clawed crayfish (*Astacus leptodactylus*). Below the pike's head is the great diving beetle, *Dytiscus marginalis*. In the lower right of the image are the bivalve the swan mussel (*Anodonta cygnea*) and the gastropod, the great ramshorn (*Planorbis* *corneus*). This stamp is an E rate stamp, good for economy mailing to Europe (versus D for domestic service and Z for the rest of the world). This set will be released as mini-sheets of 6 stamps.



Also on May 7th, Monaco will issue a stamp highlighting the Common Octopus (*Octopus vulgaris*) [€1.96]. Note in the background are a variety of corals and algae on the seafloor. This issue will be released as mini-sheets of 10 stamps.





On May 8th, the Åland Islands will issue a stamp in honor of the Eelgrass (*Zostera marina*), a type of sea grass common in meadows on the Baltic seafloor. The stamp also highlights some of the small fauna that live on the blades of the eelgrass. Åland Post lists the following species shown on the stamps and on the gutter strip of the sheet: the Baltic isopod (*Idoeta balthica*), the gastropod river nerite (*Theodoxus fluviatilis*), the gastropod Mud Snail (*Hydrobia sp.*), a caridean shrimp (*Crangon crangon*), a polychaete bristle worm (*Nereis diversicolor*), the soft-shell clam (*Mya arenaria*), the lagoon cockle (*Cerastoderma glaucum*), and the blue mussel (*Mytilus edulis*). Sheets are arranged in rows of 5 stamps with a gutter separating the upper 15 from the lower 15 stamps. The gutter strip has sketches of many of the faunal elements living on the blades of Eelgrass. Åland Post also released an official FDC with a sketch of the perch (*Perca fluviatilis*). The official maxi-card shows a photograph of a bed of eelgrass in shallow water and is canceled with a postmark showing the Baltic Sea mussel (*Macoma baltica*).



Finland will also issue a pair of stamps on May 8th – with one stamp showing a meadow of eelgrass and a second stamp showing the leaf beetle, *Macroplea pubipennis*. The stamp is denominated for Europa. *M. pubipennis* is an endemic species to the Gulf of Finland. These stamps will be released in sheets of 10



stamps with 5 stamps of each design.



Croatia will issue a set that includes the Noble Pen Shell or Fan Mussel (*Pecten periska*) on May 9th. The other stamp in the set shows the sea grass *Poisodon oceanica*. Sea grass meadows are common in the Mediterranean Sea and are important habitats for a variety of epibionts – animals and protists (including foraminifers) that live on the blades of grass. Both stamps are denominated €2.20

and will be released in sheets of 16 stamps with 8 of each design.

France will issue a stamp [€1.96] on May 10th showing an underwater scene in a reef that includes a mix of corals, sea fans, and sponges. In the water above are multiple fish species, and a portion of an octopus in the upper left. France will release this issue in sheets of 15 stamps.



The Netherlands will issue their Europa stamp on May 13th. Their issue



showcases the freshwater fish, the European Bitterling (*Rhodeus amarus*). They are small fish generally found in shallow waters across much of Europe as far east as the Neva River of Russia. One oddity of this fish is that it used to be used as a pregnancy indicator – urine from a pregnant woman injected into the female European Bitterling cause the fish's ovipositor to protrude (source: [www.fishbase.us](http://www.fishbase.us)). The stamp will be released in mini-sheets of 6 stamps and is denominated as International 1 value (€1.75).

On May 14th, Guernsey will issue its submission to the Europa Underwater Fauna & Flora theme with an attractive set of 6 stamps focused primarily on marine invertebrates. This batch will include the bivalve Ormer (*Haliotis tuberculata*) [65p], crawfish (*Palinurus elephas*) [88p], Yellow Cluster Anemone (*Parazoanthus axinellae*) [£1.20], a sea fan (*Eunicella verrucosa*) [£1.36], the fish Cuckoo Wrasse (*Labrus mixtus*) [£1.68], and the Red Starfish (*Fromia milleporella*) [£1.74]. A separate minisheet with the yellow cluster anemone and sea fan stamps will also be issued – these 2 stamps are the only stamps in the set with the Europa logo. All 6 stamps will be released as individual sheets of 10



stamps. The official FDC cachet includes an illustration of a sea urchin – the minisheet also uses the same cachet.

On May 15th, Luxembourg will release a pair of stamps in the Underwater Fauna and Flora theme. This batch is unusual in that Luxembourg decided to highlight prehistoric animals that swam the shallow seas that covered Luxembourg during the Mesozoic. The plesiosaur stamp also depicts coiled

ammonoids in the foreground. The ichthyosaur stamp has a swarm of squid-like belemnites swimming under the ichthyosaur. Both stamps are rated for 50 g – with the Ichthyosaur stamp being for domestic use and the plesiosaur stamp for mailing to Europe. These stamps will be released as mini-sheets of 10 stamps.

Other upcoming issues do not have any information released yet, but we have the following to look forward to:



April 26th - Bosnia and Herzegovina's Serb Post – 2 stamps.

May 7th – Serbia – 2 stamps.

May 9th – Andorra (Spanish Post) – 1 stamp; Bosnia and Herzegovina (Bosniak Post); Estonia – 2 stamps; Italy – 2 stamps; Montenegro – 1 stamp and 1 souvenir sheet; North Macedonia – 1 stamp and 1 souvenir sheet; Spain – 1 stamp.

May 11th – Andorra (French Post) – 1 stamp.

May 13th – Azerbaijan.

May 16th – Denmark – 1 souvenir sheet with 3 stamps.

May 26th – Greenland – 2 stamps.

May 27th – Faroe Islands – 2 stamps.

May 31st – Norway – 1 stamp; Slovenia – 2 stamps.

June 3rd – Liechtenstein.

June 6th – Ireland – 2 stamps.

It also likely that Kosovo and Vatican City will issue stamps.



## The largest butterfly on the planet

Vladimir Kachan

Butterflies are amongst the most captivating and attractive flying creatures on the planet. The rainforests of Papua New Guinea are home to some of the most spectacular butterflies on Earth including the glorious Ornithoptera Birdwings. Birdwings are named for their wing shape and size, and birdlike appearance in-flight.

Sitting between the Solomon Sea and the Owen Stanley Ranges is Oro Province of Papua New Guinea or Northern Province as it is still officially called. Oro remains one of PNG's hidden gems, despite it boasting some of the country's most incredible biodiversity. If the landscapes of Oro are deemed impressive then the wildlife can only be described as exceptional. There is one flittering creature in particular that Oro is exceptionally proud to call its own – the Queen Alexandra's birdwing butterfly. This impressive insect has a wingspan of up to 30cm, which makes it the world's biggest butterfly. Not only is this butterfly impressive in size but also in colour. Females sport velvety black wings with splashes of cream and a yellow abdomen while the males, which are about one third smaller than females, make up for their smaller size with incredible iridescent gold, turquoise, green and black wings (Figure 1).



Figure 1 - Original hand-painted artwork with butterfly Queen Alexandra's Birdwing used for the design of the 1997 UN-Geneva stamp issue



Figure 2 – Stamp of Papua New Guinea 2005 Scott #1192, with yellow Queen Alexandra birdwing butterfly, representing wildlife, decorates the flag of Oro Province.

The range of this species is entirely restricted to the Oro province of Papua New Guinea. This has led to the species was chosen as the emblem for the Northern, or Oro, Provincial Government's flag in 1977 which features a female Queen Alexandra's butterfly (Figure 2).

The Queen Alexandra's Birdwing is a magnificent sight in the forests of Papua New Guinea. Famous for its ability to grow up to 11 inches in wingspan, this magnificent creature also has an enthralling historical foundation. Sometime in 1906, the British butterfly hunter Albert Stewart Meek disembarks from an old pearler named **Hekla** on the north-east coast of New Guinea. He had commission from Lionel Walter Rothschild, 2nd Baron Rothschild, heir to the

Rothschild fortune and a zoologist, to explore the Pacific for capturing exotic butterflies and moths to



add to the baron's natural history collection. Meek has high hopes of claiming discoveries in a wilderness still largely unexplored by Europeans. Setting up camp in the ranges on the Mambare River he sees an enormous and unfamiliar butterfly. She's flying so high he brings her down with a shotgun armed with special ammunition. She's brown with pale yellow markings, her wingspan measuring almost eight inches. But then things are not going so well and he retreats to Queensland for a spell. A year later he returns, pulling up in Oro Bay, about twenty miles from where he shot the female butterfly. Then, somewhere near Popondetta, the present-day capital of Oro Province, Meek stumbles into the butterfly's garden. He captures males splashed with iridescent turquoise and blue (Figure 3), and more females, some measuring eleven inches wingtip to wingtip. The butterfly specimens are dispatched to Rothschild, who names the species Queen Alexandra's birdwing, *Ornithoptera alexandrae*, in honour of the wife of King Edward VII of England.

*Ornithoptera alexandrae* is one of the largest day butterflies of the planet, the wingspan of a female can reach 31 cm, a body length of 8 cm and a body mass of up to 12 grams, all enormous measurements for a butterfly (Figure 4). Males are smaller than females and have wingspan up to 20 cm, but its long, narrow wings are reminiscent of a swallow's, as they shimmer



Figure 4 – Female of *Ornithoptera alexandrae* butterfly on the stamp of Papua New Guinea 1988 Scott #698.

in the sunlight like iridescent sequins. Butterflies fly at an altitude of 30 meters and females lay their eggs on the leaves of the high tropical liana of the aristolohy. Their caterpillars are toxic, owing to the plants they consume, and are not commonly eaten in their natural habitat. The butterflies retain this toxicity through adulthood. The Birdwing butterfly *Ornithoptera alexandrae* is considered the rarest butterfly in the world, with reference to its immense size and rarity in real life and is a miracle of nature (Figure 5).

More than a century later, one of the world's rarest species has become the most endangered. In Oro Province, its last frontier, the density of this butterfly has shrunk to only 10 per square kilometre. They are now handful in number, but what's causing the



Figure 5 – Male of *Ornithoptera alexandrae* butterfly on the stamp of Papua New Guinea 1988, Scott #699.



Figure 3 - Artist's drawing and normal stamp 1975 of Papua New Guinea, Scott #415, with male *Ornithoptera alexandrae*.

species to dwindle? Sadly, as demand for palm oil, coffee and cocoa increase in the region, their natural rainforest habitats are being destroyed, leaving the Queen Alexandra birdwing critically endangered. Queen Alexandra's have lost much of their range across Oro province's coastal plain and are now condensed into a small stronghold

on a remote plateau called Managalas. All Birdwings fall under the Convention on International Trade in Endangered Species of Wild Fauna and Flora (CITES) trading legislation, with Queen Alexandra's Birdwing (*Ornithoptera alexandrae*) being one of only three insect species listed in the 'most endangered' category as assigned by The International Union for Conservation of Nature (IUCN). As they are threatened with extinction, CITES prohibits international commercial trade in specimens of these species.

Often measuring more than a foot across, the Queen Alexandra's Birdwing is not just the world's largest butterfly. With its riot of greens, blues and golds, it is a dazzling testimony to the artistic genius of nature. It is so large that it flies with the speed and agility of a bird (Figure 6). The Queen Alexandra's Birdwing is the most majestic and wonderful butterfly in the world.

The Author is ready to help for philatelists in creating of philatelic exhibits on butterflies and moths. His address: Vladimir Kachan, street Kulibina 9-49, Minsk-52, BY-220052, Republic of Belarus, E-mail: vladimirkachan@mail.ru



(Figure 6 - Papua New Guinea 1988 Stamp Pack with flying Queen Alexandra Birdwing butterfly.

### Sweden's national flower

In 2021, the small bluebell was chosen as our national flower. In a booklet with 10 motifs, we present the ten flowers that made it to the final.

The bluebell also adorns a coil stamp. This year's Europa theme is "Stories and Myths". What better way to send an international greeting than floral magic in the Midsummer night?



**Booklet 10 stamps:** 10 motifs, domestic letters

**Coil 100 stamps/coil:** 1 motif, domestic letters

**Coil 100 stamps/coil:** 1 motif, SEK 26

**Illustration booklet stamps:** Anneli Frisk

**Illustration coil stamps:** Anna Handell

**Typography:** Henrik Karlsson

**Colors:** 4 colors

**Paper:** Self-adhesive

<https://www.postnord.se/en/about-us/about-stamps/the-stamp-year-2024/2022/>



## BOTANY

Editor

Christopher E. Dahle BU 1269



Scott #	Denom	Common Name	Botanical Name	Family	Code
<b>ARUBA</b>					
702	220c	Cacti	2023 July 14 (Stylized Sunsets)	Set/4 Cactaceae	V B S U
<b>BOLIVIA</b>					
1455A	1b	Quinoa, <i>Chenopodium quinoa</i>	2018 (Grains Type of 2011 w/red handstamp)	Set/4 Amaranthaceae	Fl Fr A
1456A	2b	Amaranthus, <i>Amaranthus sp.</i>		Amaranthaceae	Fl Fr A
1467A	2.50b	Cañihua, <i>Chenopodium pallidicaule</i>		Amaranthaceae	Fl Fr A
1458A	5b	Andean lupin, tarwi, <i>Lupinus mutabilis</i>		Fabaceae	Fl Fr A
<b>CANADA</b>					
3413		Sheet of 2	2024 March 1 (Flowers)	Set/2; perf 13x13 1/4	
3413a	P (92c)	Butterfly weed, <i>Asclepias tuberosa</i>		Apocynaceae	Fl A SS Z
3413b	P (92c)	Spotted beebalm, <i>Monarda punctata</i>		Lamiaceae	Fl A SS Z
		SA, coil, die cut 8 1/4			
3414	P (92c)	Spotted beebalm, <i>Monarda punctata</i>		Lamiaceae	Fl A
3415	P (92c)	Butterfly weed, <i>Asclepias tuberosa</i>		Apocynaceae	Fl A
3415a		Horiz pair			
		Booklet die cut 13 1/2			
3416	P (92c)	Butterfly weed, <i>Asclepias tuberosa</i>		Apocynaceae	Fl A
3417	P (92c)	Spotted beebalm, <i>Monarda punctata</i>		Lamiaceae	Fl A
3417a		Booklet pane of 10, 5 each #3416-17			
<b>CAPE VERDE</b>					
1038	50e	<i>Acacia caboverdeana</i>	2023 June 13 (Baia do Inferno & Monte Angra Natural Parks)	Set/3 Fabaceae	T A
<b>CYPRUS</b>					
1394	75c	Roses, <i>Rosa x hybrida</i>	2023 July 10 (Aargos Rose Festival)	Single Rosaceae	Fl A
<b>DOMINICAN REPUBLIC</b>					
1750	75p	Hand holding ears of wheat, <i>Triticum aestivum</i>	2023 April 18 (FAO 75y)	Single Poaceae	Fr B
<b>FAROE ISLANDS</b>					
840	21k	White water lily, <i>Nymphaea alba</i>	2023 October 23 (Post Europ 30y)	Single Nymphaeaceae	Fl A
<b>FINLAND</b>					
1684		Horiz pair	2023 January 18 (Language of Flowers)	Seet/2	
1684a	(€2.10)	Persian buttercups, <i>Ranunculus asiaticus</i>		Ranunculaceae	Fl A
		Tulips, <i>Tulipa x hybrida</i>		Liliaceae	Fl A
1684b	(€2.10)	Persian buttercups, <i>Ranunculus asiaticus</i>		Ranunculaceae	Fl A
		Columbines, <i>Aquilegia vulgaris</i>		Ranunculaceae	Fl A
<b>Åland</b>					
471	(€2.80)	Peace symbol & stylized flowers	2023 May 9 (Europa)	Set/2	Fl B S



**GREAT BRITAIN**

<b>Jersey</b>		<b>2024 January 8</b> (Europa: Underwater Flora & Fauna)		Set/2, SS/2
2653	98p	Bladder wrack, <i>Fucus vesiculosus</i>	Fucaceae	V A
2656a		Souvenir sheet of #2653, 2656		
2657	£2.95	Sea lettuce and algae, <i>Ulva lactuca</i>	Ulvaceae	V A
2658	£3.75	Carrageen, Irish moss, <i>Chondrus crispus</i>	Rhodophyceae	V A
<b>Isle of Man</b>		<b>2023 February 17</b> (Manx Wildlife Trust 50y)		Set/10
2278		Horiz strip of 5		
2278d	80p	Sundew, <i>Drosera rotundifolia</i>	Droseraceae	V A
2278e	80p	Skullcap, <i>Scutellaria galericulata</i>	Lamiaceae	Fl A
2280		SA Booklet pane of 10		
2280a	80p	Sundew, <i>Drosera rotundifolia</i>	Droseraceae	V A
2280e	80p	Skullcap, <i>Scutellaria galericulata</i>	Lamiaceae	Fl A
<b>GREECE</b>		<b>2023 January 26</b> (Sustainable Development)		Set/3
3005	€2	Smokestack, barcode, stylized plants		V B S
<b>GUYANA</b>		<b>2022 December 22</b> (Diplomatic relations with Cuba 50y)		Set/4
4718		Sheet of 4		
4718a	\$800	Giant waterlily, <i>Victoria amazonica</i>	Nymphaeaceae	Fl A
4718b	\$400	White ginger, <i>Hedychium coronarium</i>	Zingiberaceae	Fl A
		<b>2022 December 30</b> (Cactus flowers)		Set/6, SS/1
4723		Sheet of 6		
4723a	\$300	Spider cactus, <i>Gymnocalycium horstii</i>	Cactaceae	Fl A MS
4723b	\$300	Rosy pincushion cactus, <i>Mammillaria zeilmanniana</i>	Cactaceae	Fl A MS
4723c	\$300	Peanut cactus, <i>Chamaecereus silvestrii</i>	Cactaceae	Fl A MS
4723d	\$300	Starfish cactus, <i>Stapelia grandiflora</i>	Apocynaceae	Fl A MS
4723e	\$300	Schlosser cactus, <i>Parodia erubescens</i> (= <i>Notocactus schlosseri</i> )	Cactaceae	Fl A MS
4723f	\$300	Calico cactus, <i>Echinocereus engelmannii</i>	Cactaceae	Fl A MS
4724	\$800	Monk's hood cactus, <i>Astrophytum ornatum</i>	Cactaceae	Fl A SS
<b>HONG KONG</b>		<b>2022 August 18</b> (Fruit)		Set/6, SS/1
2249	\$2	Oranges, <i>Citrus sinensis</i>	Rutaceae	Fr A
2250	\$2.60	Watermelons, <i>Citrullus lanatus</i>	Cucurbitaceae	Fr A
2251	\$3.40	Guavas, <i>Psidium guajava</i>	Myrtaceae	Fr A
2252	\$3.70	Lychees, <i>Litchi chinensis</i>	Sapindaceae	Fr A
2253	\$4.90	Bananas, <i>Musa x paradisiaca</i>	Musaceae	Fr A
2254	\$5	Papayas, <i>Carica papaya</i>	Caricaceae	Fr A
2255	\$10	All of the above		
		<b>2023 February 14</b> (Trees)		Set/4, SS/4
2289	\$2.20	Yellow pui, <i>Handroanthus chrysanthus</i>	Bignoniaceae	Fl T A
2290	\$4	Jacaranda, <i>Jacaranda mimosifolia</i>	Bignoniaceae	Fl T A
2291	\$5.40	Bald cypress, <i>Taxodium distichum</i>	Cupressaceae	T A
2292	\$5.50	Bell-flower cherry, <i>Prunus campanulata</i>	Rosaceae	Fl T A
2292a		Souvenir sheet of 4, #2289-92		
		<b>2023 September 21</b> (Vegetables)		Set/6, SS/1
2332	\$2.20	Carrots, <i>Daucus carota</i>	Apiaceae	V A
2333	\$2.80	Corn, <i>Zea mays</i>	Poaceae	Fr A
2334	\$3.70	Radishes, <i>Raphanus raphanistrum subsp. sativus</i>	Brassicaceae	V A
2335	\$4	Chinese cabbage, <i>Brassica rapa</i>	Brassicaceae	V A
2336	\$5.40	Sweet potatoes, <i>Ipomoea batatas</i>	Convolvulaceae	V A

**HONG KONG (continued)**

2337	\$5.50	Chinese white caabbage, <i>Brassica rapa</i>	Brassicaceae	V A
2338	\$10	Beetroot, <i>Beta vulgaris</i>	Chenopodiaceae	V A SS Z
		Eggplants, <i>Solanum melongena</i>	Solanaceae	Fr A SS Z
		Tomatoes, <i>Lycopersicon esculentum</i>	Solanaceae	Fr A SS
		Carrots, <i>Daucus carota</i>	Apiaceae	V A SS Z
		Lettuce, <i>Lactuca sativa</i>	Asteraceae	V A SS
		Cauliflower, <i>Brassica oleracea</i>	Brassicaceae	Fl A SS Z

**ITALY****2023 July 29** (Italian Academy of Cuisine, 70 y) Single

3967	(€1.25)	Wheat, <i>Triticum vulgare</i>	Poaceae	Fr A
		Corn, <i>Zea mays</i>	Poaceae	Fr A
		Rosemary, <i>Rosmarinum officinalis</i>	Lamiaceae	V A
		Tomatoes, <i>Lycopersicon esculentum</i>	Solanaceae	Fr A

**JAPAN****2023 January 18** (Record of Nature Series No. 3) Set/10

4647		Sheet of 10		
4647a	¥84	Strawberry, <i>Fragaria ananassa</i>	Rosaceae	Fl Fr A
4647b	¥84	Loquats, <i>Eriobotrya japonica</i>	Rosaceae	Fr A
4647c	¥84	Grapefruit, <i>Citrus x paradisi</i>	Rutaceae	Fr A
4647d	¥84	Apricots, <i>Prunus persica</i>	Rosaceae	Fr A
4647e	¥84	Kumquats, <i>Citrus japonica</i>	Rutaceae	Fr A
4647f	¥84	Wasabi, <i>Eutrema japonica</i>	Brassicaceae	V A
4647g	¥84	Carrot, <i>Daucus carota</i>	Apiaceae	V A
4647h	¥84	Peas, <i>Pisum sativum</i>	Fabaceae	Fr A
4647i	¥84	Butterbur, <i>Petasites japonicus</i>	Asteraceae	V A
4647j	¥84	Radishes, <i>Raphanus raphanistrum subsp. sativus</i>	Brassicaceae	V A

**2023 February 8** (Greetings: Spring) Set/12

4648		Sheet of 10, 5x #4648a, 4648b, #4648c, #4648d, #4648e, #4648f		
4648a	¥63	Cherry blossoms, <i>Prunus serrulata</i>	Rosaceae	Fl A MS
4648b	¥64	Sweet peas, <i>Lathyrus odoratus</i>	Fabaceae	Fl A MS
4648c	¥65	Ranunculus, <i>Ranunculus asiaticus</i>	Ranunculaceae	Fl A MS
4648d	¥66	Carnation, <i>Dianthus caryophyllus</i>	Caryophyllaceae	Fl A MS
4648e	¥67	Tulips, <i>Tulipa x hybrida</i>	Liliaceae	Fl A MS
4648f	¥68	Roses, <i>Rosa x hybrida</i>	Rosaceae	Fl A MS
4649		Sheet of 10, 5x #4649a, 4649b, #4649c, #4649d, #4649e, #4649f		
4649a	¥84	Mimosas, <i>Acacia dealbata</i>	Fabaceae	Fl A MS
4649b	¥85	Rapeseed flowers, <i>Brassica napus</i>	Brassicaceae	Fl A MS
4649c	¥86	Dandelions, <i>Taraxacum officinalis</i>	Asteraceae	Fl A MS
4649d	¥87	Freesia, <i>Freesia x hybrida</i>	Iridaceae	Fl A MS
4649e	¥88	Mimosas, <i>Acacia sp.</i>	Fabaceae	Fl A MS
4649f	¥89	Violas, <i>Viola tricolor</i>	Violaceae	Fl A MS

**2023 February 22** (Natural Landscapes Series No. 2) Set/10

4651		Sheet of 10		
4651b	¥84	Cherry tree, <i>Prunus serrulata</i>	Rosaceae	T A MS
4651c	¥84	Cherry blossoms, <i>Prunus serrulata</i>	Rosaceae	T A MS
4651e	¥84	Phlox at Hitsujiyama Park, <i>Phlox subulata</i>	Polemoniaceae	T A MS
4651f	¥84	Rapeseed flowers near Naka River, <i>Brassica napus</i>	Brassicaceae	T A MS

**2023 March 3** (Edo Series 3) Set/20

4652		Sheet of 10		
4652j	¥63	Potted morning glories, <i>Ipomoea purpurea</i>	Convolvulaceae	Fl A MS

**JAPAN (continued)**

4653	Sheet of 10			
4653g ¥84	Pine tree, branches bound to form circle, <i>Pinus sp.</i>	Pinaceae	T A MS	
<b>2023 March 3</b> (My Travel Series No. 8) Set/20				
4655	Sheet of 10			
4655f ¥63	Apple, <i>Malus x domestica</i>	Rosaceae	Fr A MS	
<b>2023 April 5</b> (Flowers of Hospitality Series No. 20) Set/10				
4657	Sheet of 10			
4657a ¥63	Carnations, <i>Dianthus caryophyllus</i>	Caryophyllaceae	Fl A MS	
4657b ¥63	Lily tree blossoms, <i>Magnolia denudata</i>	Magnoliaceae	Fl A MS	
4657c ¥63	Roses, <i>Rosa x hybrida</i>	Rosaceae	Fl A MS	
4657d ¥63	Portulaca, <i>Portulaca grandiflora</i>	Portulacaceae	Fl A MS	
4657e ¥63	Japanese iris, <i>Iris japonica</i>	Iridaceae	Fl A MS	
4658	Sheet of 10			
4658a ¥84	Carnations, <i>Dianthus caryophyllus</i>	Caryophyllaceae	Fl A MS	
4658b ¥84	Lilies, <i>Lilium candidum</i>	Liliaceae	Fl A MS	
4658c ¥84	Chinese peonies, <i>Paeonia lactiflora</i>	Paeoniaceae	Fl A MS	
4658d ¥84	Hydrangeas, <i>Hydrangea macrophylla</i>	Hydrangeaceae	Fl A MS	
4658e ¥84	Water lilies, <i>Nymphaea alba</i>	Nymphaeaceae	Fl A MS	
<b>2023 April 12</b> (Happy Greetings) Set/6				
4659	Sheet of 10 5 each #4659a, #4659b	Stylized flowers	Fl B S MS	
4660	Sheet of 10 5 each #4660a, #4660b	Stylized olive branches, <i>Olea europaea</i>	Oleaceae V B S MS	
4661	Sheet of 10 5 each #4661a, #4661b	Stylized birds & Flowers	Fl B S MS	
<b>2023 May 10</b> (G7 Summit, Hiroshima) Set/5				
4668	Sheet of 10, 2 each #4668a-e	<i>Nerium oleander</i>	Apocynaceae	Fl B S MS Z
4668a ¥84	Rice scoop, maple leaves, <i>Acer japonicum</i>	Sapindaceae	V B MS	
4668c ¥84	Camphor tree, leaves, <i>Cinnamomum camphora</i>	Lauraceae	T B MS	
4668e ¥84	Itsikushsima Shrine Torii, maple leaves, <i>Acer japonicum</i>	Sapindaceae	V B MS	
<b>2023 May 17</b> (Natural Landscapes Series No.3) Set/10				
1669	Sheet of 10			
4669c ¥84	Sunflower Park, Yanagawa, <i>Helianthus annuus</i>	Asteraceae	Fl A MS	
4669d ¥84	Bamboo Forest, Arashiyama, <i>Phyllostachys edulis</i>	Poaceae	V A MS	
4669h ¥84	Shirogane-aoi pond, tree trunks		T A U MS	
<b>2023 May 24</b> (National Land Afforestation) Set/5				
4670 ¥84	Japanese red pine, <i>Pinus densiflora</i>	Pinaceae	V A MS	
	Japanese dogwood, <i>Cornus kousa</i>	Cornaceae	Fl A MS	
4671 ¥84	Japanese red pine, <i>Pinus densiflora</i>	Pinaceae	V A MS	
	Japanese emperor oak, <i>Quercus dentata</i>	Fagaceae	V A MS	
	Amur honeysuckle, <i>Lonicera maackii</i>	Caprifoliaceae	Fl A MS	
4672 ¥84	Japanese bay leaves, <i>Machilus thunbergii</i>	Lauraceae	V A MS	
	Ussurian pear, <i>Pyrus ussuriensis</i>	Rosaceae	Fr A MS	
4673 ¥84	Cherry blossoms, <i>Prunus serrulata</i>	Rosaceae	Fl A MS	
	Camellias, <i>Camellia japonica</i>	Theaceae	Fl A MS	
4674 ¥84	Japanese elm, <i>Zelkova serrata</i>	Ulmaceae	V A MS	
	Japanese roses, <i>Rosa rugosa</i>	Rosaceae	Fl A MS	
4674a	Vert strip of 5			
<b>2023 June 6</b> (Summer Greetings) Set/20				
4675	Sheet of 10	Morning glory, <i>Ipomoea purpurea</i>	Convolvulaceae	Fl A MS Z
4675c ¥63	Loofah gourds, <i>Luffa acutangula</i>	Cucurbitaceae	Fr A MS	
4676	Sheet of 10	Maple leaves, <i>Acer japonicum</i>	Sapindaceae	V A MS Z



**JAPAN (continued)**

		Tomato, <i>Lycopersicon esculentum</i>	Solanaceae	Fr A MS Z
		Pepper, <i>Capsicum annuum</i>	Solanaceae	Fr A MS Z
		Cucumber, <i>Cucumis sativus</i>	Cucurbitaceae	Fr A MS Z
4676a	¥84	Sunflowers, <i>Helianthus annuus</i>	Asteraceae	Fl A MS
4676i	¥84	Watermelon, <i>Citrullus lanatus</i>	Cucurbitaceae	Fr A MS
<b>2023 July 7 (World Art Day) Set/20</b>				
4682		Sheet of 10		
4682b	¥63	Cherry blossoms, <i>Prunus serrulata</i>	Rosaceae	Fl A MS
4682e	¥63	Chrysanthemums, <i>Chrysanthemum millefolium</i>	Asteraceae	Fl A MS
4683		Sheet of 10		
4683b	¥84	Cherry blossoms, <i>Prunus serrulata</i>	Rosaceae	Fl A MS
4683e	¥84	Chrysanthemums, <i>Chrysanthemum millefolium</i>	Asteraceae	Fl A MS
<b>2023 July 7 (Autumn Greetings) Set/20</b>				
4684		Sheet of 10		
4684b	¥63	Maple leaves, <i>Acer sp.</i>	Sapindaceae	V A MS
4684c	¥63	Tree and hills		T B U MS
4684d	¥63	Pampas grass, <i>Miscanthus sinensis</i>	Poaceae	V A MS
4684f	¥63	Ginkgo trees, <i>Ginkgo biloba</i>	Ginkgoaceae	T A MS
4684h	¥63	Forest in autumn		T B U MS
4685		Sheet of 10		
4685b	¥84	Ginkgo leaves, <i>Ginkgo biloba</i>	Ginkgoaceae	V A MS
4685d	¥84	Fallen leaves		V A U MS
4685e	¥84	Cosmos flowers, <i>Cosmos bipinnatus</i>	Asteraceae	Fl A MS
4685f	¥84	Trees in autumn		T A U MS
<b>2023 September 6 (Special National Sports Festival) Set/10</b>				
4688		Sheet of 10		
4688j	¥84	Jomon Sugi cedar tree, <i>Cryptomeria japonica</i>	Cupressaceae	T A MS
<b>2023 September 9 (Greetings) Set/30</b>				
4692	Sheet of 10	Stylized flowers		Fl B S MS
4693	Sheet of 10	Stylized flowers		Fl B S MS
4694	Sheet of 10	Stylized flowers		Fl B S MS
<b>2023 September 9 (Flower Colors) Set/10</b>				
4696		Sheet of 10		
4696a	¥63	Rose, <i>Rosa x hybrida</i>	Rosaceae	Fl A MS
4696b	¥63	Hypericum, <i>Hypericum perforatum</i>	Hypericaceae	Fr A MS
4696c	¥63	Wintersweet, <i>Chimonanthus praecox</i>	Calycanthaceae	Fl A MS
4696d	¥63	Cymbidium orchids, <i>Cymbidium sp.</i>	Orchidaceae	Fl A MS
4696e	¥63	Chrysanthemum, <i>Chrysanthemum millefolium</i>	Asteraceae	Fl A MS
4697		Sheet of 10		
4697a	¥84	Rose, <i>Rosa x hybrida</i>	Rosaceae	Fl A MS
4697b	¥84	Hypericum, <i>Hypericum perforatum</i>	Hypericaceae	Fl A MS
4697c	¥84	Wintersweet, <i>Chimonanthus praecox</i>	Calycanthaceae	Fl A MS
4697d	¥84	Cymbidium orchids, <i>Cymbidium sp.</i>	Orchidaceae	Fl A MS
4697e	¥84	Chrysanthemums, <i>Chrysanthemum millefolium</i>	Asteraceae	Fl A MS
<b>2023 December 13 (Regional Foods) Set/20</b>				
4705		Sheet of 10		
4705a	¥63	Pineapple, <i>Ananas comosus</i>	Bromeliaceae	Fr A MS
		Bananas, <i>Musa x paradisiaca</i>	Musaceae	Fr A MS

**JAPAN (continued)**

	Dragon fruit, <i>Selenicereus undatus</i>	Cactaceae	Fr A MS
	Mango, <i>Mangifera indica</i>	Anacardiaceae	Fr A MS
<b>2024 February 7 (Greetings) Set/20</b>			
4719	Sheet of 10		
4719a ¥63	Cherry blossoms, <i>Prunus serrulata</i>	Rosaceae	Fl A MS
4719b ¥63	Rapeseed flowers, <i>Raphanus raphanistrum subsp. sativus</i>	Brassicaceae	Fl A MS
4719c ¥63	White clover, <i>Trifolium repens</i>	Fabaceae	Fl A MS
4719d ¥63	Astragalus, <i>Astragalus sinicus</i>	Fabaceae	Fl A MS
4719e ¥63	Horsetails, <i>Equisetum japonicum</i>	Equisetaceae	V A MS
4720	Sheet of 10		
4720a ¥84	Dandelions, <i>Taraxacum officinalis</i>	Asteraceae	Fl A MS
4720b ¥84	Violets, <i>Viola sp.</i>	Violaceae	Fl A MS
4720c ¥84	Cherry blossoms, <i>Prunus serrulata</i>	Rosaceae	Fl A MS
4720d ¥84	Flaccid anemones, <i>Anemonastrum flaccidum</i>	Ranunculaceae	Fl A MS
4720e ¥84	Primroses, <i>Primula japonica</i>	Primulaceae	Fl A MS

**LIECHTENSTEIN****2023 September 4 (St. Hildegard of Bingen)**

Set/2

1907	230rp	Stylized medicinal plants	V A U S
------	-------	---------------------------	---------

**LITHUANIA****2023 July 7 (Vytautas Maganus University Botanical Gardens, 100y)**

SS/4

1221		Souvenir sheet of 4	
1221d €1.80		Greenhouse & Flowers	Fl B U

**2023 August 24 (Protected Flowers from Red Book)** Set/2

1224 €1.40	Broad-leaved marsh orchid, <i>Dactylorhiza majalis</i>	Orchidaceae	Fl A
1225 €1.40	Eastern pasqueflower, <i>Pulsatilla patens</i>	Ranunculaceae	Fl A

**LUXEMBOURG****2023 November 14 (Orchids)**

Set/4

B546 €1+10c	Marsh orchid, <i>Anacamptis pyramidalis</i>	Orchidaceae	Fl A
B547 €1.40+15c	Man orchid, <i>Orchis anthropophora</i>	Orchidaceae	Fl A
B548 €1.75+15c	Lizard orchid, <i>Himantoglossum hircinum</i>	Orchidaceae	Fl A
B549 €2+30c	Fragrant orchid, <i>Gymnadenia conopsea</i>	Orchidaceae	Fl A

**MACEDONIA****2023 November 29 (Flora)**

Set/4

972	10d	<i>Alchemilla peristerica</i>	Rosaceae	Fl A
973	20d	<i>Sempervivum ciliosum subsp. octopodes</i> (= <i>S. octopodes</i> )	Crassulaceae	Fl A
974	30d	<i>Crocus pelistericus</i>	Iridaceae	Fl A
975	101d	Mis-named <i>Festuca pelisterica</i>	Poaceae	Fl A
		Should be <i>Festuca peristereae</i> ?	Poaceae	Fl A

**MALAYSIA****2022 September 5** Type of 2020 embossed with gold logo, see Vol.71(1)p.90

1870a \$8	Yellow Meranti tree, <i>Shorea faguetiana</i>	Dipterocarpaceae	T A SS Z
-----------	---	------------------	----------

**2022 August 4** (Durian type of 2021 inscribed MAHA 2022 Agricultural Exhibition, see Vol.71(1))

1906A \$5	Raja kinyit, <i>Durio zibethinus</i> 'Raja kunyit'	Malvaceae	Fr A SS
-----------	--	-----------	---------

**2022 August 4** (Edible Flowers type of 2021 inscribed MAHA 2022 Agricultural Exhibition, see Vol.72)

1906B \$5	Torch ginger, <i>Etlingera elatior</i>	Zingiberaceae	Fl A SS Z
-----------	--	---------------	-----------

**2023 May 18 (Research Institutes)** Set/3

1931	30c	Forestry Research Intitute	T B S
1933	\$1.30	Malaysia Palm Oil Board, <i>Elaeis guineensis</i>	Fr A

**2023 July 27 (Oldest *Neobalanocarpus* in Malaysia)** Set/2

1936	Horiz pair		
1936a \$1.50	Trunk and canopy, <i>Neobalanocarpus heimii</i>	Dipterocarpaceae	T A
1936b \$1.50	Base, leaves, flowers, seeds, <i>Neobalanocarpus heimii</i>	Dipterocarpaceae	Fl Fr T A

<b>MOLDOVA</b>		<b>2023 June 20</b> (Garden Flowers)	Set/3	
1178	50b	Chrysanthemum, <i>Chrysanthemum millefolium</i>	Asteraceae	Fl A
1179	3.30L	Dahlia, <i>Dahlia x hybrida</i>	Asteraceae	Fl A
1180	10.30L	Gladiolus, <i>Gladiolus x hortulanus</i>	Iridaceae	Fl A
<b>MONACO</b>		<b>2023 September 4</b> (Intl. Flower Festival)	Single	
3157	€1	Unidentified flowers		Fl A U
<b>MONGOLIA</b>		<b>2022 December 28</b> (Red Book flora & Fauna)	Set/8	
3026		Sheet of 4		
3026a	1000t	Peony and bird, <i>Paeonia lactiflora</i>	Paeoniaceae	Fl B MS
3026b	1000t	Flower & camel, <i>Chesneya macrantha</i> (= <i>Spongiocarpella grubovii</i> )	Fabaceae	Fl B MS
3026c	1000t	Plant and fish, <i>Acorus calamus</i>	Acoraceae	V B MS
3026d	1000t	Flower and lizard, <i>Chesneya mongolica</i>	Fabaceae	Fl B MS
3027		Sheet of 4		
3027a	3000t	Orchid and moose, <i>Cypripedium macranthos</i>	Orchidaceae	Fl B MS
3027b	3000t	Sundew and salamander, <i>Drosera anglica</i>	Droseraceae	Fl B MS
3027c	3000t	Flower and bird, <i>Swertia banzragczii</i>	Gentianaceae	Fl B MS
3027d	3000t	Desert hyacinth and jerboa, <i>Cistanche deserticola</i>	Orobanchaceae	Fl B MS
<b>NORWAY</b>		<b>2023 October 7</b>	Set/2	
1970	(21k)	Spruce logs for animal feed, <i>Picea abies</i>	Pinaceae	V A
1971a		Booklet pane of 10, 5 each #1970-71		
1971b		Horiz pair #1970-71		
<b>PENRHYN</b>		<b>2023 August 16</b> (Bird type of 2018)	Set/4, White frames	
655	\$20	Birds and water lilies, <i>Nymphaea sp.</i>	Nymphaeaceae	Fl B
		Set/4, 2x SS/1 without white frames		
657		Block of 4		
657c	\$20	Birds and waterlilies, <i>Nymphaea sp.</i>	Nymphaeaceae	Fl B
657f		Souvenir sheet of 1 #657c		
<b>QATAR</b>		<b>2023 March 15</b> (Stylized flowers)	Set/9	
1181		Sheet of 9		Fl B S
<b>SPAIN</b>		<b>2023 October 6</b> (Botanist)	Single	
4727	€1	Antonio José Cavanilles		
<b>SWEDEN</b>		<b>2022 April 28</b> (Europa)	Set/2	
2887	26k	Bluebell, <i>Campanula rotundifolia</i>	Campanulaceae	Fl A
2888	(13k)	Bluebell, <i>Campanula rotundifolia</i>	Campanulaceae	Fl A
		<b>2022 April 28</b> (Flowers of Sweden)	Set/10	
2889		Booklet pane of 10		
2889a	(13k)	Bluebell, <i>Campanula rotundifolia</i>	Campanulaceae	Fl A
2889b	(13k)	Viola, <i>Viola tricolor</i>	Violaceae	Fl A
2889c	(13k)	Coltsfoot, <i>Tussilago farfara</i>	Asteraceae	Fl A
2889d	(13k)	Arctic starflower, <i>Lysimachia europaea</i>	Primulaceae	Fl A
2889e	(13k)	Wild strawberry, <i>Fragaria vesca</i>	Rosaceae	Fl A
2889f	(13k)	Ligonberry, <i>Vaccinium vitis-idea</i>	Ericaceae	Fl A
2889g	(13k)	Twinflower, <i>Linnaea borealis</i>	Caprifoliaceae	Fl A
2889h	(13k)	Clover, <i>Trifolium pratense</i>	Fabaceae	Fl A
2889i	(13k)	Crane flower, <i>Geranium sylvaticum</i>	Geraniaceae	Fl A
2889j	(13k)	Blueberry, <i>Vaccinium myrtillus</i>	Ericaceae	Fl A



**SWEDEN (continued)****2022 November 3** (Winter Magic) Set/5

2895 Vert. strip of 5

2895d (13k) Snow covered flower, *Angelica archangelica* Apiaceae Fl A**UNITED STATES****2024 March 16** (Garden Delights) Set/45845 (68c) Humming bird & sunflower, *Helianthus annuus* Asteraceae Fl B5846 (68c) Hummingbird & spotted touch-me-not, *Impatiens capensis* Balsaminaceae Fl B5847 (68c) Hummingbird & zinnia, *Zinnia elegans* Asteraceae Fl B5848 (68c) Hummingbird & cigar flowers, *Cuphea ignea* Lythraceae Fl B

5848a Block of 4

5848b Booklet pane of 20

**ANIMALS; DOGS & CATS; HORSES; INSECTS; BUGS BUTTERFLIES;  
 MALARIA; FLOWERS & PLANTS; ORCHIDS MUSHROOMS; MARINE  
 LIFE; FISH; TURTLES; REPTILES SHELLS; WHALES & SEALS;  
 BIRDS; MINERALS MIXED BIOLOGY TOPICS**

**Write for the price list of your choice**

**EASTERN SHORE STAMP COMPANY**

P.O. BOX 204, MIDDLETOWN, DE 19709

e-mail: [essc@comcast.net](mailto:essc@comcast.net)

Phone: (302) 563-2174

## New Plants in the Philatelic Herbarium

By Christopher E. Dahle, BU 1269

### ***Parodia erubescens*** CACTACEAE

Common name: Schlosser cactus

Synonyms: *Echinocactus erubescens*, *Notocactus erubescens*, *N. erubescens* f. *schlosseri*, *N. schlosseri*, *Ritterocactus erubescens*

Terrestrial solitary, spherical succulent to 20 cm tall, 11 cm diameter with 22 ribs. Spines dense, short, stiff, erect, copper colored. Flowers yellow, 5 cm, in late spring. Native to eastern South America, in Argentina, Peru, Bolivia, Brazil, Colombia, and Uruguay.

Guyana Scott #4723e. Issued 30 December 2022 in a minisheet of 6, along with a souvenir sheet.



### ***Echinocereus engelmannii*** CACTACEAE

Common names: Calico cactus, Strawberry hedgehog cactus

Synonyms: *Cereus engelmannii*, *Echinocereus engelmannii* var. *engelmannii*, *Pilocereus engelmannii*

Terrestrial succulent, up to 20 cylindrical stems with 10 ribs, to 65 cm tall and 4-9 cm diameter. Radial spines short to 2 cm, white. Central spines 2-7, twisted, to 7.5 cm. Flowers magenta 9 cm diameter, late May. Fruit pink and dry when ripe. Found 0- 2,400 m in southwestern U.S. and Mexico in Mojave and Sonora deserts.

Guyana Scott #4723f. Issued 30 December 2022 in a minisheet of 6, along with a souvenir sheet.



### ***Astrophytum ornatum*** CACTACEAE

Common name: Monk's hood cactus, bishop's cap cactus, star cactus

Synonyms: 23

Terrestrial cylindrical to columnar succulent, single stem with 5-10 ribs, to 1.2 m tall and 30 cm diameter. Areoles have 5-11 radial spines, 2 cm brown to gray. Stems covered with bands of white woolly scales to protect from sun. Flowers yellowish white, 7.5 cm all summer. Native to central plateau of Mexico, 800-2,000 m, in semidesert xerophile scrub on limestone cliffs.

Guyana Scott #4724 Issued 30 December 2022 in a minisheet of 6, along with a souvenir sheet.

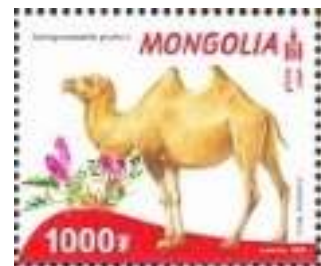


### ***Chesneya macrantha*** FABACEAE

Synonyms: *Chesneya potaninii*, *C. spinosa*, *Chesniella macrantha*, *Oxytropis grubovii*, *Spongiocarpella grubovii*, *S. potaninii*, *S. spinosa*

Plants cushionlike. Stems 5-10 cm. Leaves 2-4 cm, 7-9 foliate. Flowers solitary, purple. Grows on dry slopes in China and Mongolia.

Mongolia Scott #3026b. Issued 22 December 2022 in a set of 2 sheets of four stamps titled Animals and Plants of the Mongolian Red Book.



### ***Chesneya mongolica*** FABACEAE

Synonym: *Chesniella mongolica*

Perennial, stems prostrate. Leaves 15-20 mm, 5-7 foliate. Flowers solitary, purple, in August. Grows in gravelly areas of Mongolia.

Mongolia Scott #3026d. Issued 22 December 2022 in a set of 2 sheets of four stamps titled Animals and Plants of the Mongolian Red Book.





***Swertia banzragczii* GENTIANACEAE**

Perennial growing from a rhizome. Leaves alternate. Flowers numerous, yellow-green with violet dots. Wet meadows and creek banks in high mountains. Endemic to Altai Mountains in China and Mongolia. Mongolia Scott #3027c. Issued 22 December 2022 in a set of 2 sheets of four stamps titled Animals and Plants of the Mongolian Red Book



***Cistanche deserticola* OROBANCHACEAE**

Common name: Desert hyacinth, desert broomrape  
Synonym: *Cistanche deserticola* var. *flabellata*  
Herb, 0.4-1.6 m, thick fleshy stem. Holoparasite, lacking chlorophyll. Obtains nutrients from black saxaul (*Haloxylon ammodendron*) and white saxaul (*Haloxylon persicum*). Flowers yellow. Used in traditional Chinese medicine. Native to deserts of China and Mongolia.

Mongolia Scott #3027d. Issued 22 December 2022 in a set of 2 sheets of four stamps titled Animals and Plants of the Mongolian Red Book



***Alchemilla peristerica* ROSACEAE**

Perennial herbaceous plant. Basal leaves, palmately lobed. Flowers yellow or greenish, small. Found in moist habitats on the Balkan Peninsula.

Macedonia Scott #372. Issued 25 November 2023 in a set of 4 depicting flora. Printed by offset lithography.



***Crocus pelistericus* IRIDACEAE**

Cormous perennial. Lanceolate leaves, 3-4, no white stripe. Flowers 6-8 cm, deep purple, with glossy petals, white throat, persisting through summer. Found in alpine tussock grass above 1,900 m, in moist soil or near running water, from Eastern Albania to Northern Greece

Macedonia Scott #974. Issued 25 November 2023 in a set of 4 depicting flora. Printed by offset lithography.



***Festuca peristerea* POACEAE**

The name on the stamp is *Festuca pelisterica*. This is not a recognized name. The editor believes it is in error.

*Festuca peristerea* is a perennial forming dense clumps. Leaf sheaths are persistent. Leaves filiform. Inflorescence a panicle, 7-9 cm. It is found in high mountain vegetation in southeastern Europe and the Balkan Peninsula.

Macedonia Scott #975. Issued 25 November 2023 in a set of 4 depicting flora. Printed by offset lithography.



***Lonicera maackii* CAPRIFOLIACEAE**

Common name: Amur honeysuckle

Synonyms: *Caprifolium maackii*, *Lonicera maackii* f. *podocarpa*, *L. Maackii* var. *maackii*, *Xylosteon maackii*

Deciduous shrub to 5 m. Leaves lanceolate-ovate 3.5-8.5 cm, purplish when young. Flowers paired on peduncles, corolla white turning yellow, 15-20 mm, bilabiate. Native to eastern and southeastern Asia. Introduced to Europe and North America.

Japan Scott #1671. Issued 24 May 2023 for National Land Afforestation in Iwate Prefecture. Printed by offset lithography, se-tenant, in a sheet of 10 with 5 designs, Yuji Kusuda designer.





# FUNGI

Editor

Paul A. Mistretta, BU 1681



*Ed. Note: Occasionally in this section and also in the Herpetology section, we will note a species that is known to be poisonous or venomous by marking it with a ☠ symbol. One should not infer that other species that are not so marked are non-poisonous or non-venomous or safe to handle/eat.*

Scott #	Denom.	Common name; Scientific name	Family name	Code
<b>GREAT BRITAIN</b>				
<b>Isle of Man</b>		<b>2023 February 17</b>		M
2279d	£1.14	Fly agaric, <i>Amanita muscaria</i>	Amanitaceae	A
Issued in a strip of 5 different stamps [Sc# 2279a-e]				
2280i	£1.14	Fly agaric, <i>Amanita muscaria</i> [same as Sc#2279d]	Amanitaceae	A
Booklet pane/10 different stamps [Sc#2280 as 1 each of Sc#2278a-e & 2279a-e.].				
<b>JAPAN</b>		<b>2023 February 17 (Autumn)</b>		sM
4685	Sheet of 10			
4685a	¥84	Chipmunk & unidentified mushroom	----	B

## New Swiss Definitive Series: Natural Patterns

The new “Natural patterns” definitive stamps invite you to observe nature. Nature as an artist – that’s the concept behind the new definitive stamps. The tiny images pay tribute to the wonders of Swiss nature, whose magical beauty can only be fully appreciated close-up. An icicle in a stream, a butterfly’s wing, a goat’s beard’s seedhead, marble’s tinted veins or a spider’s web: nature abounds with works of art – you just have to look closely and, of course, protect it.



## Caveat Emptor (Part 13)

### 2008-2009

Paul A. Mistretta

Continuing our jaunt through the fantasyland of illegal mushroom related ‘stamps’, while Russian locals are still common, this installment continues the shift towards actual countries’ names on illegal issues. Remember that, even if not specified below, virtually all of the sets listed below occur perforated and imperforated.

#### 2008



Fig. 1



Fig. 2



Fig. 3



Fig. 4

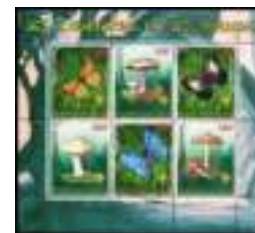


Fig. 5

**Azerbaijan** – 1 SS/3d <M> 90q as 20, 30 & 40q (Fig. 1)

**Azerbaijan** – 8SF <M> 2 x 20q, 30q, 2 x 40q, 50q, 60q & 70q (Fig. 2)

**Bashkortostan (as Bashkiria)** – 11MS/5d ea & 55DS 9[r] ea SF [45[r] ea MS] (Fig. 3)

**Benin** – 3SS/1of2d & 3IS/1of2d 800f ea SF; <M> & orchid ea pr (Fig. 4)

**Congo, Republic** - MS/3of6d & 3IM/3of6d <M> 3000f as 2 x 300f, 2 x 500 & 2 x 700f; <M> + butterflies (Fig. 5)



Fig. 6



Fig. 7



Fig. 8



Fig. 9



Fig. 10

**Congo, Republic** - 3MS/1of2d & 3IM/1of2d <M> 300f in MS 800f ea; <M> + birds (Fig. 6)

**Guinea-Bissau** ("5 Aug 2008") - MS/4d, SS & 4DS <M> 500f ea SF; <M> & insect (Fig. 7)

**Guinea, Equatorial** - 8SS & 8IS <D & E> 7e ea; UNICEF - Disney & fairy tales (Fig. 8)

**Guinea, Republic** ("10 Mar 2008") - MS/6d & 2SS <D> 5000f ea SF; <M> + Albert Schweitzer (Fig. 9)

**Guinea, Republic** ("15 Dec 2008") – 2MS/1of6d & SS <D E> 5000fg ea SF in MS & 2500fg SS; "Flora of China" (Fig. 10)



Fig. 11



Fig. 12



Fig. 13



Fig. 14

**Kalmykia** – 15MS/4d <M> 3MS – 1, 2, 3 & 5[r], 3MS – 10, 15, 20 & 25[r], 3MS – 15[r] ea SF, 3MS 30, 35, 40 & 45[r] & 3MS – 50, 60, 70 & 90[r] (Note: only 2 of the 4x15[r] MS have been confirmed)

**Karelia** – 3SS & 3IS <D> 1 x 10[r] & 2 x 12.5[r]; <M> stamps-on-SS & IS (Fig. 12)

**Karelia** – 3MS/4d, 3IM/4d & 12DS & 12ID <E> 2MS/IS x 92r & 1 MS/IS x 200r; Owls in flight - <M> in selv only & completely unrelated to vignettes of SF (Fig. 13)

**Karelia** – 2IM/4d & 4IS <M> MS - 3.5[r], 5.5[r], 7.75[r] 9.00[r] & SS - 12.50[r] (Fig. 14)





Fig. 15



Fig. 16

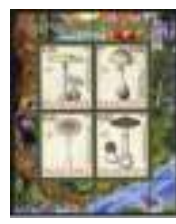


Fig. 17



Fig. 18



Fig. 19



Fig. 20

**Karelia** - 4MS/9d <M> (9.75[r] ea SF (Fig. 15)

**Karelia** - 2MS/9d & 2IM/9d <M> SF ea 3.5[r] (Fig. 16)

**Malawi** - 4MS/4d & 4IM/4d <M> 150k ea SF (Fig. 17)

**Malawi** - 2MS/2of4d & 2IM/2of4d <M> 150k ea SF; <M> & owls (Fig. 18)

**Malawi** - 1MS/6d <M> 3SF x 150k & 3SF x 250K; poisonous <M>s (Fig. 19)

**Marij El, Republic of** - 12MS/4d <M> ea MS 1 ea 7/- + 3/-, 9/50 + 3/-, 12/- + 3/- & 16/- + 3/- [r] (Fig. 20)



Fig. 21



Fig. 22



Fig. 23

**Mordovia** - IS/36d <L> ea SF 9[r] (Fig. 21)

**Russia** - 2SS & 2IS <M & E> 23[r]; possibly more SS/IS in this issue (Fig. 22)

**St Thomas & Prince** - MS/9d & SS <D> SFs 10000db ea, SS 95000db; <M>s & orchids (Fig. 23)

## 2009



Fig. 24



Fig. 25



Fig. 26



Fig. 27



Fig. 28

**Altai** - 6SS & 6IS <M or E> 50[r] ea (Fig. 24)

**Bashkortostan, Republic of** - 3IM/8d <M> ea SI 9.75[r]; Prob exists as MS/8d (Fig. 25)

**Bashkortostan, Republic of** - 9IS <M> 9.75[r] ea; prob also as SS (Fig. 26)

**Bashkortostan, Republic of** (as Bashkiria) - 2MS/2of4d, 2MS/4of8d & 12DS <M> ea SF 10[r]; all appear to also exist imperf. (Fig. 27)

**Bashkortostan, Republic of** (as Bashkiria) - 2SS & 4DS <M> ea 70[r] (Fig. 28)



Fig. 29



Fig. 30



Fig. 31



Fig. 32

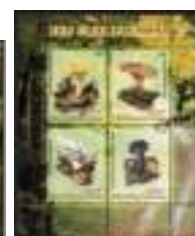


Fig. 33



Fig. 34

**Bashkortostan, Republic of** - 7SH/10 <E> ea SH 230[r]; 22 spp. of <M>s in selv. of SHs of butterfly stamps (pairs of 5 diff spp. ea SH); selv. of all 7 SHs are identical; there may be additional SH not seen. (Fig. 29)

**Bashkortostan, Republic of** (as Bashkiria) - 1MS/2of9d & 2DS 1<M> & 1<L> ea SF 9[r]; Also has 1SF of a coral which mimics a *Clavaria*-like <M> and another, a moss, which vignette mimics a *Parmelia*-like lichen (Fig. 30)

**Bashkortostan, Republic of** - SS <D> 23[r] (Fig. 31)



**Benin** - 2MS/2of4d; 2IS/2of4d; 4DS/1; 4DI/1 <M> SF 500f ea ; <M> + butterflies (Fig. 32)

**Congo, Republic of** - MS/4d <M> & SS <D& E> SF in MS 100f, 300f, 500f & 800f, SF in SS 1500f<M> & N. Mandella; perf & imperf (Fig. 33)

**Congo, Republic of** - 2MS/2of4d; perf & imperf; <M> + bonsai (Fig. 34)



Fig. 35

Fig. 36

Fig. 37

Fig. 38

Fig. 39

Fig. 40

Fig. 41

**Congo, Republic of** - 2MS/2of4d; perf & imperf; <M> + minerals (Fig. 35)

**Congo, Republic of** - 2MS/2of4d; perf & imperf; <M> + orchids (Fig. 36)

**Congo, Republic of** - 2MS/2of4d; perf & imperf; <M> + owls (Fig. 37)

**Congo, Republic of** - 2MS/2of4d; perf & imperf; <M> + butterflies (Fig. 38)

**Djibouti** - 4SS/2d <M & E> ea SS 1 x 200f & 1 x 200f; perf & imperf (Fig. 39)

**Djibouti** - 2MS/4d <M & E> ea MS 1 ea 100f, 200f, 300f & 400f; perf & imperf (Fig. 40)

**Guinea-Bissau** - MS/5d, SS & 5DS <M> MS 450fcfa, 550fcfa, 2 x 800fcfa & 100fcfa, SS 3500fcfa; perf & imperf (Fig. 41)



Fig. 42

Fig. 43

Fig. 44

Fig. 45

**Guinea, Republic** - MS/6d&SS & 6DS/1 <M & E> ea SF in MS 5000fg, SF in SS 29000fg; <M>-stamps on stamps (Fig. 42)

**Ivory Coast** - MS/9d <M> 3 x 150fcfa, 3 x 300fcfa & 3 x 400fcfa (Fig. 43)

**Karelia** - 4IM/10d <M> all SF 10[r]; perf & imperf; Owlsnwith <M> in selv (Fig. 44)

**Karelia** - 4IS <D> SI in IS 11[r] 12.5[r] & 2 x 15[r]; stamps-on-stamps – may be 2 “issues” 11[r] SS labeled “40 years of the first mushroom issue”, the other 3 SSs are labeled “44 years...” (Fig. 45)



Fig. 46 Fig. 47 Fig. 48 Fig. 49 Fig. 50 Fig. 51

**Marij El, Republic of** - 12MS/4d <M> ea MS 9/- + 4/-[r], 13/- + 4/-[r], 16/- + 4/-[r] & 23/- + 4/-[r] (Fig. 46)

**Marij El, Republic of** - 4SS & 4DS <E> ea 70[r]; owls with <M> in selv (Fig. 47)

**Mordovia** - 3IM/6d & 18DS M & E> ea SI 23[r]; 17/18 species of vignettes are reproduced in the selv of ea IM; selv identical among the three; 12/18 identically reproduced in SV of the DS (Fig. 48)

**Mordovia** - 4IM/6d & 1IM/5d <L> ea SI 23[r]; 17/29 species of vignettes are reproduced in the selv of ea IM; selvidentical among the five (Fig. 49)

**Northern Territories** - MS/8d <M> 2 x 200[r], 2 x 270[r], 2 x 320[r] & 2 x 500[r] (Fig. 50)

**Russia** - 3IS/2d & 1IM/8d <M> ea SI 10[p] (Fig. 51)



Fig. 52



Fig. 53



Fig. 54



Fig. 55



Fig. 56

**Russia** – SH=IS/10of20d <M> ea SI 10r; <M> & beetles (Fig. 52)

**Rwanda** - MS/7of14d+label <M> 2 x 200f, 4 x 300f & 1000f; perf & imperf; butterflies & <M>s (Fig. 53)

**Rwanda** - MS/6of12d <M> 2 x 400f, 2 x 500f & 2 x 750f; perf & imperf; <M> & bonsai (Fig. 54)

**St. Thomas & Prince** – SS <D? & E?> 100000db; gastronomy [not sure about this one; SS may have <M>s (probably black olives) on pizza in selv, and <M>s at lower edge of dinner plate, but my food preference may be showing – may be olives] (Fig. 55)

**St. Thomas & Prince** - MS/4d & SS & 4DS <D & E> SF in MS ea 13000db, SS 100000db; <M>& Scouts(Fig. 56)



Fig. 57



Fig. 58



Fig. 59



Fig. 59a

**St. Thomas & Prince** - MS/4d & SS & 4DS <D & E> SF in MS ea 25000db, SS 100000db; <M> & orchids(Fig. 57)

**Tatarstan** - MS/6d <M> ea SF 7[r] (Fig. 58)

**Yakutia** – 5MS/8d <P & M> & 5MS/4d <M> MS/8-1 – 5[r], 2x 10r, 2x15r, 2x20r & 25r, MS/8-2 – 25r, 2x 40r, 2x 35r, 2x 40r 45r, MS/8-3 – 45r, 2x 50r, 2x55r,2x 60r , 65r, MS/8-4 – 65r, 2x 70r, 2x 75r, 2x 80r, 85r, MS/8-5 – 85r, 2x 90r, 2x 95r, 2x 100r, 150r; MS/4 – 4x 1r, 4x 2r, 4x 3r, 4x 4r, 4x 5r; format duplicated series issued in 2010 (Figs. 59 & 59a)



# MAMMALIA

**Editor**  
**Michael Prince, LM 68**



## New Issues

Scott#	Denom	Common Name/Scientific Name	Family/Subfamily	Code
<b>AUSTRIA</b>				
		<b>2023 April 15</b> (Sheep Breed)	Single	
3056	100c	Jezersko-Solcava Sheep, <i>Ovis aries</i>	Bovidae	
<b>CAPE VERDE</b>				
		<b>2023 June 13</b> (Baia do Inferno and Monte Angra Natural Park) Set/3		
1039	60e	Common Bottlenose Dolphin, <i>Tursiops truncatus</i>	Delphinidae	
<b>CHINA</b>				
		<b>2021 December 4</b> (Protected Animals)	Set/8	
4857		Sheet of 8		
4857d	\$1.20	Chinese Pangolin, <i>Manis pentadactyla</i>	Manidae	
4857e	\$1.20	Hainan Gibbon, <i>Nomascus hainanus</i>	Hylobatidae NEW	
4857g	\$1.20	Indo-Pacific Humpbacked Dolphin, <i>Sousa chinensis</i>	Delphinidae	
		<b>2022 January 5</b> (New Year 2022 – Year of the Tiger)	Set/2, 2xSS/6	
4861	\$1.20	Tiger, <i>Panthera tigris</i>	Felidae	
4816a		Souvenir sheet of 6		
4862	\$1.20	Tiger, <i>Panthera tigris</i>	Felidae	
4862a		Souvenir sheet of 6		
4862b		Booklet pane of 4		
4862c		Booklet pane of 8		
		<b>2022 November 5</b> (National Parks and their Animals)	Set/5	
4937	\$1.20	Tibetan Antelope, <i>Antholops hodgsonii</i>	Bovidae	
		Yak, <i>Bos grunniens</i>	Bovidae	
4938	\$1.20	Giant Panda, <i>Ailuropoda melanoleuca</i>	Ursidae	
		Red Panda, <i>Ailurus fulgens</i>	Ailuridae	
		Golden Snub-nosed Monkey, <i>Rhinopithecus roxellana</i>	Cercopithecidae	
4939	\$1.20	Tiger, <i>Panthera tigris</i>	Felidae	
		Leopard, <i>Panthera pardus</i>	Felidae	
		Sika Deer, <i>Cervus nippon</i>	Cervidae	
4940	\$1.20	Mongolian Gazelle, <i>Procapra gutturosa</i>	Bovidae	
		Black Crested Gibbon, <i>Nomascus concolor</i>	Hylobatidae	
<b>FINLAND</b>				
		<b>2023 January 18</b> (Booklet Stamps – Fauna) Set/5		
1685	(€2.10)	Domestic Cat, <i>Felis catus</i>	Felidae	
1687	(€2.10)	Eurasian Red Squirrel, <i>Sciurus vulgaris</i>	Sciuridae	
1688	(€2.10)	Domestic Dog, <i>Canis lupus familiaris</i>	Canidae	
1689	(€2.10)	Red Deer, <i>Cervus elaphus</i>	Cervidae	
		Domestic White Rabbit, <i>Oryctolagus cuniculus</i>	Leporidae	
1689e		Booklet pane of 10		
<b>FRENCH SOUTHERN &amp; ANTARCTIC TERRITORIES</b>				
		<b>2023 June 24</b> (Fauna) Set/3		
705		Horiz strip of 3		
705a	58c	Southern Elephant Seal, <i>Mirounga leonina</i>	Phocidae	
705b	58c	Southern Elephant Seal, <i>Mirounga leonina</i>	Phocidae	
705c	€1.16	Southern Elephant Seal, <i>Mirounga leonina</i>	Phocidae	
		<b>2023 November 8</b> (Exploration of Kerguelin Island Centenary) Single		
707	€2.32	Southern Elephant Seal, <i>Mirounga leonina</i>	Phocidae	



**GREAT BRITAIN****Isle of Man****2023 February 17** (Manx Wildlife Trust, 50y) Set/10

2278 Horiz strip of 5

2278b 80p Western European Hedgehog, *Erinaceus europaeus* Erinaceidae**2023 October 26** (Wildlife in Winter) Set/62330 £1.00 Longhorn Sheep, *Ovis aries* Bovidae2331 £1.28 Mountain Hare, *Lepus timidus* Leporidae2333 £2.31 Manx Cat, *Felis cattus* Felidae2334 £2.72 Grey Seal, *Halichoerus grypus* Phocidae**GREECE****2023 April 4** (World Stray Animals Day) Set/23008 (90c) Domestic Cat, *Felis cattus* Felidae3009 (€3.40) Domestic Dog, *Canis lupus familiaris* Canidae**GUYANA****2022 July 4** (Pygmy Marmoset) Set/6, SS/1

4707 Sheet of 6

4707a-f \$200 Pygmy Marmoset, *Cebuella pygmaea* Cebidae4705 \$800 Pygmy Marmoset, *Cebuella pygmaea* Cebidae**2022 July 4** (Bush Dog) Set/4, SS/1

4708 Sheet of 4

4708a-d \$400 Bush Dog, *Speothos vanaticus* Canidae4709 \$800 Bush Dog, *Speothos venaticus* Canidae**LITHUANIA****2023 September 29** (Dog) Single1228 €1.50 Lithuanian Hound, *Canis lupus familiaris* Canidae**LUXEMBOURG****2023 October 10** (Lion's Head) Single1623 900c Lion, *Panthera leo* Felidae**MOLDOVA****2023 May 30** (Animals in Chisinau Zoo) Set/4, SS/11172 3.30L Llama, *Lama glama* Camelidae**MONACO****2023 September 4** (International Cat Show) Single3158 €1.80 Bengal Cat, *Felis cattus* Felidae**SWEDEN****2023 August 25** (Cats) Set/7

2892 Pair

2892a 26k Domestic Cats – Cornelius & Bengt, *Felis cattus* Felidae2892b 26k Domestic Cats – Hera, Fili, & Valiant, *Felis cattus* Felidae

2893 Vert strip of 5

2893a 13k Domestic Cats – Bengt, *Felis cattus* Felidae2893b 13k Domestic Cats – Cornelius, *Felis cattus* Felidae2893c 13k Domestic Cats – Fili, *Felis cattus* Felidae2893d 13k Domestic Cats – Heras, *Felis cattus* Felidae2892e 13f Domestic Cats – Valiant, *Felis cattus* Felidae**2023 April 27** (2020 Olympic Equestrian Team Horses & Riders) Set/5

2906 Vert strip of 5

2906b-e (15k) Domestic Horse, *Equus caballus* Equidae

2906f Booklet pane of 10



## ORNITHOLOGY

Editor

Glenn G. Mertz, BU 1455



### Corrections/Updates

CHINA (TAIWAN), V49(2), page 118

Correction: This stamp is listed as a Black-headed Mountain-Finch, *Leucosticte brandi*. But is a Mongolian Finch, *Buccanetes mongolicus*, per Kjell Sharning in Norway.

CHINA (TAIWAN), V49(1), page 45

Correction: Originally listed as a Blue-winged Parrotlet, *Forpus xanthropterus* in family of Psittacidae, but the Blue-winged is showing a hint of blue wing; Correct name of this species is Golden-winged Parakeet, *Brotogeris chrysoptera*, as it has gold (or yellow) in the primaries. Blue-winged was later changed to the English name of cobalt-rumped Parrotlet

ECUADOR, V50(1), page 64

Correction: Bird was listed as a Rufous-naped Brush-Finch, *Atlapetes rufincha*. Name should be Bolivan Brushfinch, same scientific name.

GHANA, V47(2), page 87

Correction: Listed as a Red-legged Cormorant, *Phalacrocorax gaimardi* (Genus subsequently to *Poikilocarbo*); it was listed that the species was incorrectly named, but in fact the bird name on the stamp incorrectly listed as a Roseate Tern.

GUINEA, V49(2), page 98

Correction: Stamp listed as a Short-tailed Babbler, *Malacocincla malacensis*, The bird is an Abbott's Babbler, *Malaccensis abbotti*; the bird was on a SS, Sc#1587. This is per Kjell Sharning in Norway.

GUYANA, V43(1), page 22

Correction: The bird was listed as a Green Parakeet, *Aratinga holochlora*, value \$15.30, Sc#2655, but the correct bird is an Orange-chinned Parakeet, *Brotogeris jugularis*, in the family of Psittacidae. To date, no Green Parakeet has shown up on a stamp.

HUNGARY, V49(2), page 118

Correction: The stamp listed is a Rock Bunting, *Emberiza cai* in the family of Emberizidae, but the stamp photo is of an Aquatic Warbler, *Acrocephalus paludicola*.

LAOS, V45(3), page 157

Correction: White-vented Mynah, *Acridotheres grandis* was listed, but on Kjell's Sharning's Website "Theme on Birds" he has the bird listed as a Javan Myna, *Acridotheres javanicus*, which is also the name listed on the stamp, but is also known as White-vented Myna, but the descriptions in Google match both birds. To me only one bird should be listed. Viewing both birds in the "The Complete Birds Of The World" every species illustrated, I would agree the bird in question on the stamp is the Javan Myna. It has the yellow circle around the eye, where the White-vented does not.

PALAU, V44(4), page 178

Correction: A prior editor, listed a stamp by Palau Islands, as a Uniform Swiftlet, *Collocalia vanikorensis*, Sc#336c, but noted name of “Island Swiftlet” was printed on the stamp. Without a scientific name on a stamp; the stamp features two birds, for Palau Airmail, each carrying a letter in its beak. Kjell Sharning website, listed these as Caroline Islands Swiftlet, *Aerodramus inquietus*, in an issue by Micronesia on 11/18/1991. This stamp, shown by Micronesia, has the two birds in flight listing Island Swiftlet, no scientific name on the stamp, but Kjell listed these also as *Aerodramus inquietus*. In neither issue were the birds listed as a Uniform Swiftlet.

SIERRA LEONE, V49(3&4), page 186/

Update: Malabar Parakeet, *Psittacula columboides*, family of Psittaculidae is also known as Blue-winged Parakeet. There are often difference between what name gets use by The International Ornithological Congress World Bird List versus the names used by the Clements Checklist of Birds of the World. I wish that these two listings and also Birdpex would get together to hash out what should be the final name.

SOLOMON ISLANDS, V50(1), page 63

Correction: The bird listed, Long-tailed Starling, *Mino kreffti*, should be Long-tailed Myna, with same scientific name. The Long-tailed Starling, *Aplonis magna* has not yet appeared on a stamp.

Author’s Comments—in performing my function in authoring the subject of Ornithology, I see a fair amount of incorrect English names or scientific names. In addition, wrong bird names can be misidentified and this can happen by artists not being able to see every bird in all different poses or settings to capture the full true identity, and even by photographers in all settings and lighting. This not meant to reflect negatively on artists or photographers, unless you have unlimited time to wait for the bird to move or change position for them to have a more fuller view. Some birds are just not very cooperative or very shy.

### New Issues

Scott#	Denom	Common Name/Scientific Name	Family/Subfamily	Code
<b>CENTRAL AFRICAN REP.</b>		<b>2023 July 1 (Sun Birds)</b>	Set/3, SS/1	A*
N/A	1200fr	Garden Sunbird, <i>Cinnyris jugularis</i>	Nectariniidae	
N/A	1200fr	Purple-rumped Sunbird, <i>Leptocoma zeylonica</i>	Nectariniidae	
N/A	1200fr	Fire-tailed Sunbird, <i>Aethopyga ignicauda</i>	Nectariniidae	
N/A	3600fr	SS Crimson Sunbird, <i>Aethopyga siparaja</i>	Nectariniidae	
In margin		Loten’s Sunbird, <i>Cinnyris lotenius</i> (RS)	Nectariniidae	
		Palestine Sunbird, <i>Cinnyris osea</i>	Nectariniidae	
<b>CHAD</b>		<b>2023 April 20 (Sea shells and birds)</b>	Set/3, SS/1	A*
N/A	1200f	Lesser Frigatebird, <i>Fregata ariel</i>	Fregatidae	
N/A	1200f	Red-footed Booby, <i>Sula sula rubripes</i> (ssp)	Sulidae	
N/A	1200f	Roseate Tern, <i>Sterna dougallii gracilis</i> (ssp)	Laridae	
In margin		Great Cormorant, <i>Phalacrocorax carbo</i> (RS)	Phalacrocoracidae	
N/A	3600f	SS William’s Storm-Petrel, <i>Oceanites oceanicus</i>	Oceanitidae	
In margin		Masked Booby, <i>Sula dactylatra</i> (RS)	Sulidae	
		<b>2023 April 20 (Meteorites and Dinosaurs)</b>	Set/3, SS/1	A*
N/A	1200f	† Pterodactylus, <i>Pterodactylus antiquus</i> (Called a Winged Finger)	†Pterodactylidae	
In margin		† Pteranodon, <i>Pteranodon longiceps</i> (RS)	†Pteranodontidae	
N/A	3600f	SS Same as above		



**CHAD (continued)**

<b>2023 April 20 (Owls)</b>			Set/3, SS/1	A*
N/A	1200f	Great Horned Owl, <i>Bubo virginianus</i>	Strigidae	
N/A	1200f	Indian Scops-Owl, <i>Otus bakkamoena</i>	Strigidae	
N/A	1200f	Great Gray Owl, <i>Strix nebulosa</i>	Strigidae	
In margin		Eastern Screech-Owl, <i>Megascops asio</i>	Strigidae	
N/A	3600f	SS Barn Owl, <i>Tyto alba</i>	Tytonidae	
In margin		Eurasian Eagle-Owl, <i>Bubo bubo</i>	Strigidae	
<b>2023 April 20 (Water Birds)</b>			Set/3, SS/1	A*
N/A	1200f	Eared Grebe, <i>Podiceps nigricollis</i>	Podicipedidae	
N/A	1200f	White-headed Duck, <i>Oxyura leucocephala</i>	Anatidae	
N/A	1200f	Red-throated Loon, <i>Gavia stellata</i>	Gaviidae	
In margin		Little Bittern, <i>Ixobrychus minutus</i> (RS)	Ardeidae	
N/A	3600f	SS Taiga Bean-Goose, <i>Anser fabalis</i>	Anatidae	
In margin		Common Eider, <i>Somateria mollissima</i>	Anatidae	
<b>2023 April 20 (Trochilidae species)</b>			Set/3, SS/1	A*
N/A	1200f	Green-tailed Emerald, <i>Chlorostilbon alice</i>	Trochilidae	
N/A	1200f	Puerto Rican Emerald, <i>Riccordia maugaeus</i>	Trochilidae	
N/A	1200f	Blue-chested Hummingbird, <i>Polyerata amabilis</i>	Trochilidae V73(2)	
In margin		Dusky Hummingbird, <i>Phaeoptila sordida</i>	Trochilidae	
N/A	3600f	SS White-chested Emerald, <i>Chrysuronia brevirostris</i> (Also in margin (LL))	Trochilidae	
		Ecuadorian Piedtail, <i>Phlogophilus hemileucurus</i>	Trochilidae (UR)	
<b>2023 April 20 (Birds of Chad)</b>			Set/8	A*
N/A	1500fr	Secretary-bird, <i>Sagittarius serpentarius</i>	Sagittariidae	
N/A	1500fr	European Turtle-Dove, <i>Streptopelia turtur</i>	Columbidae	
N//A	1500fr	Black Stork, <i>Ciconia nigra</i>	Ciconiidae	
N/A	1500fr	Marsh Owl, <i>Asio capensis</i>	Strigidae	
N/A	1500fr	Eurasian Teal, <i>Anas crecca</i> (now a ssp)	Anatidae	
N/A	1500fr	Lesser Flamingo, <i>Phoeniconaias minor</i>	Phoenicopteridae	
N/A	1500fr	Common Ostrich, <i>Struthio camelus</i>	Struthionidae	
N/A	1500fr	Black Crowned-Crane, <i>Balearica pavonine</i>	Gruidae	
<b>CAPE VERDE 2023 October 13 (Baia do Inferno &amp; Monte Angra National Park)</b>			Set/3	A*
1037	40e	Cape Verde Storm-Petrel, <i>Hydrobates jabejabe</i>	Hydrobatidae V73(1)	
<b>DJIBOUTI 2023 August 1 (Birds of Prey)</b>			Set/5	A*
N/A	200fd	Bateleur, <i>Terathopius ecaudatus</i>	Accipitridae	
N/A	200fd	Osprey, <i>Pandion haliaetus</i>	Pandionidae	
N/A	200fd	Steppe Eagle, <i>Aquila nipalensis</i>	Accipitridae	
N/A	200fd	Long-crested Eagle, <i>Lophaelus occipitalis</i>	Accipitridae	
N/A	200fd	Gray Falcon, <i>Falco hypoleucos</i>	Falconidae	
<b>2023 August 1 (Owls)</b>			Set/5	A*
N/A	200fd	Barn Owl, <i>Tyto alba</i>	Tytonidae	
N/A	200fd	Eurasian Eagle-Owl, <i>Bubo bubo sibiricus</i> (ssp)	Strigidae	
N/A	200fd	Eurasian Pygmy-Owl, <i>Glaucidium passerinum</i>	Strigidae	
N/A	200fd	Snowy Owl, <i>Bubo scandiacus</i>	Strigidae	
N/A	200fd	Boreal Owl, <i>Aegolius funereus</i>	Strigidae	
<b>FINLAND 2023 January 18 (Important Friends, Valentine's Day)</b>			Set/5	A*
1686	(€2.10)	Mute Swan, <i>Cygnus olor</i>	Anatidae	

**Åland** **2023 March 15** Single A\*  
 468 (€2.10) Parrot Crossbill, *Loxia pytyopsittacus* Fringillidae  
 (Previously shown on a Guinea stamp on 4/30/2021)

**FRANCE** **2023 April 21** (Ptg by Eva Gonzales) Single C\*  
 6415 €2.32 House Sparrow, *Passer domesticus* Passeridae

**GIBRALTAR** **2022 November 2** (Twelve Days of Christmas) Set/6 A\*  
 1843 30p Red-legged Partridge, *Alectoris rufa* Phasianidae  
 1848 £4 A goose not identified Anatidae  
 1849 Sheet of 6  
 1849a 30p Mute Swan, *Cygnus olor* Anatidae

**GREAT BRITAIN**

**Isle of Man** **2023 February 17** (Manx Wildlife Trust 50y) Set/5 A\*

2278 Horiz strip of 5  
 2278a 80p Little Tern, *Sternula albifrons* Laridae  
 2279 Sheet of 5  
 2279e 80p Red-billed Chough, *Pyrrhocorax pyrrhocorax* Corvidae  
**2023 September 1** ("Birds of Prey" by Jeremy Paul) Set/6 A\*  
 2323 80p Eurasian Kestrel, *Falco tinnunculus* Falconidae  
 2324 £1.28 Peregrine Falcon, *Falco peregrinus* Falconidae  
 2325 £1.28 Eurasian Buzzard, *Buteo buteo* Accipitridae  
 2326 £1.51 Merlin, *Falco columbarius* Falconidae  
 2327 £2.31 Eurasian Sparrowhawk, *Accipiter nisus* Accipitridae  
 2328 £2.72 Northern Harrier, *Circus cyaneus* Accipitridae  
**2023 October 26** (Wildlife in Winter) Set/6 A\*  
 2329 80p European Robin, *Erithacus rubecula* Muscicapidae  
 2332 £1.51 Atlantic Puffin, *Fratercula arctica* Alcidae

**GREENLAND** **2023 October 10** Single A\*  
 937 13k European Golden-Plover, *Pluvialis apricaria* Charadriidae

**GUINEA** **2023 September 23** (Lighthouses and birds) Set/5 A\*  
 N/A 12,000fr Northern Cardinal, *Cardinalis cardinalis* Cardinalidae  
 N/A 12,000fr Common Chaffinch, *Fringilla coelebs* Fringillidae  
 N/A 12,000fr Ruby-throated Hummingbird, *Archilochus colubris* Trochilidae  
 N/A 12,000fr White-bellied Green-Pigeon, *Treron sieboldii* Columbidae  
 N/A 12,000fr Dunnock, *Prunella modularis* Prunellidae  
 N/A 52,000fr SS California Quail, *Callipepla californica* Odontophoridae  
 In margin Common Wood-Pigeon, *Columba palumbus* (LL) Columbidae  
 Bald Eagle, *Haliaeetus leucocephalus* Accipitridae

**GUINEA-BISSAU** **2023 May 22** (Cactus & birds) Set/4, SS/1 A\*  
 N/A 1,000fr Eurasian Bullfinch, *Pyrrhula pyrrhula* Fringillidae  
 N/A 1,000fr Kashmir Nutcracker, *Nucifraga multipunctata* Corvidae V73(2)  
 N/A 1,000fr Orange Bullfinch, *Pyrrhula aurantiaca* Fringillidae V73(2)  
 N/A 1,000fr Spectacled Finch, *Callacanthus burtoni* Fringillidae V73(2)  
 N/A 3,600fr SS Black-headed Mountain-Finch, *Leucosticte brandti haematopygia* (ssp) Fringillidae  
 In margin Yellow-billed Blue-Magpie, *Urocissa flavirostris* Corvidae (UL)  
 Blue-headed Pitta, *Hydrornis baudii* (LR) Pittidae  
**2023 August 11** (Birds and eggs) Set/6 A\*  
 N/A 500fr Common Chaffinch, *Fringilla coelebs* Fringillidae

**GUINEA-BISSAU (continued)**

N/A	500fr	Northern Lapwing, <i>Vanellus vanellus</i>	Charadriidae
N/A	500fr	Eurasian Curlew, <i>Numenius arquata</i>	Scolopacidae
N/A	500fr	Eurasian Kestrel, <i>Falco tinnunculus</i>	Falconidae
N/A	500fr	Common Gull, <i>Larus canus canus</i> (ssp)	Laridae
N/A	500fr	Common Murre, <i>Uria aalge albionis</i> (ssp)	Alcidae

<b>GUYANA</b>	<b>2022 November 18</b>	(Keel-billed Toucan)	Sete/4, SS/1	A*
4714a-f \$300	Keel-billed Toucan, <i>Ramphastos sulfuratus</i>	Ramphastidae		
4715 \$800 SS	Same species	Ramphastidae		

	<b>2022 November 18</b>	(Short-eared Owl)	Set/4, SS/1	A*
4716a-d \$400	Short-eared Owl, <i>Asio flammeus</i>	Strigidae		
4717 \$800 SS	Same species	Strigidae		

	<b>2022 December 22</b>	(Diplomatic Relations with Cuba, 50y)	Set/4	A*
4718c \$400	Hoatzin, <i>Opisthocomus hoazin</i> (Guyana)	Opisthocomidae		
4718d \$400	Cuban Trogon, <i>Priotelus temnurus</i> (Cuba)	Trogonidae		

<b>MOLDOVA</b>	<b>2023 May 30</b>	(Chisinau Zoo)	Set/4, SS/1	A*
1173	7L Blue-and-yellow Macaw, <i>Ara ararauna</i>	Psittacidae		
1175	13.60L Emu, <i>Dromaius novaehollandiae</i>	Casuariidae		
1176	12L SS Black Swan, <i>Cygnus atratus</i>	Anatidae		

<b>PENRHYN (COOK ISLAND)</b>	<b>2022 August 18</b>	(2022 Birdpex)	SS/1	A*
651 \$8.50	White-fronted Tern, <i>Sterna striata</i>	Laridae		
	<b>2023 August 16</b>	(Type of 2018, with and without white frames)	Set/4, SS/1	A*
653 \$5.00	Striated Heron, <i>Butorides striata</i> (white frame)	Ardeidae		
657a \$5.00	Same species, no white frame	Ardeidae		
654 \$17.50	Same species, (white frame)	Ardeidae		
657b \$17.50	Same species, no white frame	Ardeidae		
655 \$20.60	Same species, (white frame)	Ardeidae		
657c \$20.60	Same species, no white frame	Ardeidae		
656 \$25.00	Same species, (white frame)	Ardeidae		
657d \$25.00	Same species, no white frame	Ardeidae		
657e	SS of 1 of 657b			
657f	SS of 1 of 657c			
658	SS of \$5.00 stamp			

<b>SLOVAKIA</b>	<b>2023 October 2</b>	(Slovak Post 30y)	SS/1	A*
942 €3	Rock Dove, <i>Columba livia</i>	Columba		

<b>SIERRA LEONE</b>	<b>2023 August 11</b>	(Taiwan Blue Magpie/Chinese Plum)	Set/4, 2xSS/1	A*
N/A 35Le	Taiwan Blue-Magpie, <i>Urocissa caerulea</i> (featuring the upper body)	Corvidae		
N/A 35Le	Same species, bird in flight	Corvidae		
N/A 135Le	SS Same species, full bird sitting on branch of plum tree	Corvidae		

<b>TOGO</b>	<b>2023 June 28</b>	(Bee-eaters)	Set/4, SS/1	A*
N/A 1,000fr	White-fronted Bee-eater, <i>Merops bullockoides</i>	Meropidae		
N/A 1,000fr	Blue-bearded Bee-eater, <i>Nyctyornis athertoni</i>	Meropidae		
N/A 1,000fr	Red-bearded Bee-eater, <i>Nyctyornis amictus</i>	Meropidae		
N/A 1,000fr	Northern Carmine Bee-eater, <i>Merops nubicus</i>	Meropidae		
N/A 3,600fr	SS Rainbow Bee-eater, <i>Merops ornatus</i>	Meropidae		



**TOGO (continued)**

<b>2023 June 28 (Owls)</b>		Set/4, SS/1	A*
N/A	1,000fr Australian Masked-Owl, <i>Tyto novaehollandiae kimberli</i> (ssp)	Tytonidae	
N/A	1,000fr Eurasian Scops-Owl, <i>Otus scops</i>	Strigidae	
N/A	1,000fr Barn Owl, <i>Tyto alba javanica</i> (ssp)	Tytonidae V73(2)	
(Chuck Braun has it listed as an Eastern Barn Owl but still listed as a ssp by Clements Checklist)			
N/A	1,000fr Barred Owl, <i>Strix varia</i>	Strigidae	
N/A	3,600fr SS Australian Masked-Owl, <i>Tyto novaehollandiae melvillensis</i> (ssp)	Tytonidae	
In margin	Barn Owl, <i>Tyto alba</i>	Tytonidae	
<b>2023 June 28 (Extinct Birds)</b>		Set/4, SS/1	A*
N/A	1,000fr †New Zealand Giant Penguin, <i>Pachydyptes ponderosus</i>	Spheniscidae V73(2)	
N/A	1,000fr †Bachman's Warbler, <i>Vermivora bachmanii</i>	Parulidae	
N/A	1,000fr †Tasmanian Emu, <i>Dromaius novaehollandiae diemenensis</i>	Casuariidae	
N/A	1,000fr †Dodo, <i>Raphus cucullatus</i>	Columbidae	
N/A	3,600fr SS †Great Auk, <i>Pinguinus impennis</i>	Alcidae	
In margin	†New Zealand Giant Penguin, <i>Pachydyptes ponderosus</i>	(UR) Spheniscidae	
	†Passenger Pigeon, <i>Ectopistes migratorius</i> (Bot)	Columbidae	
<b>2023 June 28 (Raptors)</b>		Set/4, SS/1	A*
N/A	1,000fr African Cuckoo-Hawk, <i>Aviceda cuculoides</i>	Accipitridae	
N/A	1,000fr Crested Serpent-Eagle, <i>Spilornis cheela</i>	Accipitridae	
N/A	1,000fr Vinous-breasted Sparrowhawk, <i>Accipiter rhodogaster</i>	Accipitridae V73(2)	
N/A	1,000fr Sulawesi Goshawk, <i>Accipiter griseiceps</i>	Accipitridae V73(2)	
(Previously shown in the margin on a Niger sheet of 8/15/2022)			
N/A	3,600fr SS Eleonora's Falcon, <i>Falco eleonora</i>	Falconidae	
<b>2023 June 28 (Lighthouses and Seabirds)</b>		Set/4, SS/1	A*
N/A	1,000fr Common Gull, <i>Larus canus</i>	Laridae	
N/A	1,000fr Northern Gannet, <i>Morus bassanus</i>	Sulidae	
N/A	1,000fr Gull-billed Tern, <i>Gelochelidon nilotica</i>	Laridae	
N/A	3,600fr SS Western Gull, <i>Larus occidentalis</i>	Laridae	
In margin	Brown Pelican, <i>Pelecanus occidentalis</i> (UR)	Pelecanidae	
	Brown Booby, <i>Sula leucogaster</i>	Sulidae	
<b>2023 June 28 (Flamingos)</b>		Set/9	A*
N/A	500fr Greater Flamingo, <i>Phoenicopterus roseus</i> (also stamp #6)	Phoenicopteridae	
N/A	500fr Lesser Flamingo, <i>Phoeniconaias minor</i> (also stamp #7)	Phoenicopteridae	
N/A	500fr Greater Flamingo, <i>Phoenicopterus roseus</i> (also stamp #8)	Phoenicopteridae	
N/A	500fr American Flamingo, <i>Phoenicopterus ruber</i> (also stamp #9)	Phoenicopteridae	
N/A	500fr Lesser Flamingo, <i>Phoeniconaias minor</i> (this is stamp #5)	Phoenicopteridae	
<b>2023 June 28 (Eagles)</b>		Set/9	A*
N/A	500fr Long-crested Eagle, <i>Lophaetus occipitalis</i> (LS)	Accipitridae	
	Tawny Eagle, <i>Aquila rapax rapax</i> (also stamp #6) (RS)	Accipitridae	
N/A	500fr Short-toed Snake-Eagle, <i>Circaetus gallicus</i> (also stamp #7)	Accipitridae	
N/A	500fr African Hawk-Eagle, <i>Aquila spilogaster</i> (also stamp #8)	Accipitridae	
N/A	500fr Brown Snake-Eagle, <i>Circaetus cinereus</i> (also stamp #9)	Accipitridae	
N/A	500fr SS Egyptian Goose, <i>Alopochen aegyptiaca</i> (LS)	Anatidae	
	Martial Eagle, <i>Polemaetus bellicosus</i> (LS) (this is stamp #5)	Accipitridae	
<b>2023 June 28 (Hornbills)</b>		Set/9	A*
N/A	500fr African Gray Hornbill, <i>Lophoceros nasutus</i> (also stamp #6)	Bucerotidae	
N/A	500fr Black-casqued Hornbill, <i>Ceratogymna atrat</i> (also stamp #7)	Bucerotidae	
N/A	500fr Piping Hornbill, <i>Bycanistes fistulator</i> (also stamp #8)	Bucerotidae	
N/A	500fr Black-and-white Casqued Hornbill, <i>Bycanistes subcylindricus</i> (also stamp #9)	Bucerotidae	

**TOGO (continued)**

N/A	500fr	Northern Red-billed Hornbill, <i>Tockus erythrorhynchus</i> (this is stamp #5)	Bucerotidae	
		<b>2023 June 28</b> (Indigo Birds) Set/9		A*
N/A	500fr	Jambandu Indigobird, <i>Vidua raricola</i> (also on stamp #6)	Viduidae	
N/A	500fr	Cameron Indigobird, <i>Vidua camerunensis</i> (also on stamp #7)	Viduidae	
N/A	500fr	Quailfinch Indigobird, <i>Vidua nigeriae</i> (also on stamp #8)	Viduidae	
N/A	500fr	Baka Indigobird, <i>Vidua larvaticola</i> (also on stamp #9)	Viduidae	
N/A	500fr	Wilson's Indigobird, <i>Vidua wilsoni</i> (this is stamp #5)	Viduidae	
		<b>2023 June 28</b> (Owls) Set/5		A*
N/A	500fr	Eurasian Scops-Owl, <i>Otus scops</i> (LS)	Strigidae	
		Northern White-faced Owl, <i>Ptilopsis leucotis</i> (RS) (also on stamp #6)	Strigidae	
N/A	500fr	African Wood-Owl, <i>Strix woodfordii</i> (also on stamp #7)	Strigidae	
N/A	500fr	Barn Owl, <i>Tyto alba</i> (also on stamp #8)	Tytonidae	
N/A	500fr	Eurasian Scops-Owl, <i>Otus scops</i> (also on stamp #9)	Strigidae	
N/A	500fr	Eurasian Scops-Owl, <i>Otus scops</i> (LS)	Strigidae	
		Pel's Fishing Owl, <i>Scotopelia peli</i> (this is stamp #5)	Strigidae	
		<b>2023 June 28</b> (Flying Prehistoric reptiles) Set/9		A*
N/A	500fr	†Sordes, <i>Sordes pilosus</i> (LS)	†Rhamphorhynchidae	
		†Thalassodromeus, <i>Thalassodromeus sethi</i> (RS) (also on stamp #6)	†Thalassodromidae	
		(The species name, Seth's, means Sea-Runner, Seth being the Egyptian God of Storms & Chaos.		
		Also had the largest skull of any Pterosaur)		
N/A	500fr	†Quetzalcoatlus, <i>Quetzalcoatlus northropi</i> (LS)	†Azhdarchidae	
		†Pteranodon, <i>Pteranodon longiceps</i> (RS) (also on stamp #7)	†Pteranodontidae	
N/A	500fr	†Rhamphornychus, <i>Rhamphorhynchus longicaudus</i>	†Rhamphorhynchidae	
		†Quetzalcoatlus, <i>Quetzalcoatlus northropi</i> (RS) (also on stamp #8)	†Azhdarchidae	
N/A	500fr	†Pterodaustro, <i>Pterodaustro guinazui</i> (LS)	†Ctenochasmatidae	
		†Rhamphornychus, <i>Rhamphorhynchus longicaudus</i> (RS) (also on stamp #9)	†Rhamphorhynchidae	
N/A	500fr	†Pterandon, <i>Pterandon longiceps</i> (LS & RS) (this is stamp #5)	†Pteranodontidae	
		<b>2023 June 28</b> (Pigeons and doves) Set/12		A*
N/A	500fr	Bruce's Green-Pigeon, <i>Treron waalia</i> (also on stamp #6)	Columbidae	
N/A	500fr	Laughing Dove, <i>Spilopelia senegalensis</i> (also on stamp #7)	Columbidae	
		Stamp also has genus of <i>Streptopelia</i> .		
N/A	500fr	African Green-Pigeon, <i>Treron calvus</i> (also on stamp #8)	Columbidae	
N/A	500fr	Blue-headed Wood-Dove, <i>Turtur brehmeri</i> (also on stamp #9)	Columbidae	
N/A	500fr	European Turtle-Dove, <i>Streptopelia turtur</i> (this is stamp #5)	Columbidae	
		<b>2023 June 28</b> (Owls) Set/9		A*
N/A	500fr	Northern Saw-whet Owl, <i>Aegolius acadicus</i> (also on stamp #6)	Strigidae	
N/A	500fr	Barred Owl, <i>Strix varia</i> (also on stamp #7)	Strigidae	
N/A	500fr	Spotted Owl, <i>Strix occidentalis lucida</i> (ssp) (also on stamp #8)	Strigidae	
N/A	500fr	Koepcke's Screech-Owl, <i>Megascops koepckeae</i> (also on stamp #9)	Strigidae	
N/A	500fr	Barn Owl, <i>Tyto alba</i> (this is stamp #5)	Tytonidae	
		<b>2023 June 28</b> (Bee-eaters) Set/9		A*
N/A	500fr	Swallow-tailed Bee-eater, <i>Merops hirundineus</i> (also on stamp #6)	Meropidae	
N/A	500fr	Northern Carmine Bee-eater, <i>Merops nubicus</i> (also on stamp #7)	Meropidae	
N/A	500fr	Black Bee-eater, <i>Merops gularis</i> (also on stamp #8)	Meropidae	
N/A	500fr	Rosey Bee-eater, <i>Merops malimbicus</i> (also on stamp #9)	Meropidae	
N/A	500fr	Little Bee-eater, <i>Merops pusillus</i> (this is stamp #5)	Meropidae	
		<b>2023 June 28</b> (Kingfishers) Set/9		A*
N/A	500fr	Pied Kingfisher, <i>Ceryle rudis</i> (also on stamp #6)	Alcedinidae	
N/A	500fr	African Pgymy-Kingfisher, <i>Ispidina picta</i> (also on stamp #7)	Alcedinidae	

**TOGO (continued)**

N/A	500fr	Giant Kingfisher, <i>Megaceryle maxima</i> (also on stamp #8)	Alcedinidae
N/A	500fr	Gray-headed Kingfisher, <i>Halcyon leucocephala</i> (also on stamp #9)	Alcedinidae
N/A	500fr	Malachite Kingfisher, <i>Corythornis cristatus</i> (this on stamp #5) also has genus of <i>Alcedo</i>	Alcedinidae

**2023 June 28** (Predators)

Set/9

A\*

N/A	500fr	Red-tailed Hawk, <i>Buteo jamaicensis</i>	Accipitridae
-----	-------	---	--------------

**2023 June 28** (Endangered Species of Africa) Set/9 A\*

N/A	500fr	African Penguin, <i>Spheniscus demersus</i>	Spheniscidae
-----	-------	---	--------------

**Australian Ground Parrots**

Australia is renowned for its diverse avifauna, being home to around 800 bird species. This includes around 55 extant species of parrots (Order Psittaciformes, Family Psittaculidae). These colourful, cacophonous birds are conspicuous and showy exemplars of our native birdlife. Two physical attributes characterise them, setting them apart from other bird species: a broad downturned beak and zygodactylous feet (two forward-facing toes and two backward facing).

Parrots typically spend much time in the tree canopy. These primarily vegetarian birds crack seeds and nuts with their powerful beaks and most depend on mature trees with established hollows for nesting. But there are exceptions to this. Of the five terrestrial parrot species that occur worldwide, three of these are endemic to Australia: the Night Parrot, Western Ground Parrot and Eastern Ground Parrot; the other two are endemic to New Zealand (Kea and Antipodes Parakeet). Unlike most other parrot species and as their name suggests, ground parrots spend much of their time on the ground, where they build shallow nests of loosely knit sticks in low-lying thicket.

While the three species may be ground-dwelling, they are nevertheless reasonably strong fliers, though generally they run to avoid danger rather than fly. If they are flushed out of hiding, they may fly low for a distance and then drop back into the dense habitat. Their terrestrial behaviour and precise habitat requirements aggravate the parlous state of all three species.

***Pezoporus occidentalis***

The Night Parrot measures 22–24 cm in length and, compared with the other two ground parrots, is thickset and stocky, with a short tail and large head. It is green-black flecked, though more yellow than its kin, particularly on its lower face and belly. There is little physical difference between the male and female individuals.

***Pezoporus flaviventris***

The Western Ground Parrot, also known as Kyloring by the Ngoongar people, is a beautiful slender, grass-green parrot measuring 28–30 cm in length. It has a dark-flecked back and yellow-and-dark-barred breast and abdomen, with yellow bars extending along the length of its long green tail feathers. It has a yellow bar on each wing and orange-red band above its beak. Adults of both sexes are alike.

***Pezoporus wallicus***

The Eastern Ground Parrot is very similar to its western counterpart in both size and plumage, though its yellow is a little brighter; in fact, the Western Ground Parrot was once considered a subspecies of the Eastern Ground Parrot. While it too inhabits coastal heathlands and associated open marshy areas with low-growing foliage, it has an alternative common name of Swamp Parrot. In Tasmania, it is also associated with areas of button grass.





## New Birds in the Philatelic Aviary

By Charles E. Braun, BU 1364

### New Birds



#### **LITTLE TINAMOU, *Crypturellus soui*** Tinamidae

Colombia, 2024, not yet cataloged, 2000p

Length: 9 to 10 inches, sexes alike, resident, brown, paler below, with a blackish head, nape, and neck.

Habitat: Forest, overgrown clearings, thickets and plantations.

Range: Southern Bolivia and northern Brazil.

Reference: del Hoyo, J., A. Elliott and J. Sargatal, Eds. Handbook of the Birds of the World, Volume 1.



#### **CHESTNUT WOOD-QUAIL, *Odontophorus hyperythrus*** Odontophoridae

Colombia, 2024, not yet cataloged, 2000p

Length: 10 to 11 inches, resident. The male (shown on the stamp) is brown above and rufous below; the female has a dark gray lower breast and belly.

Habitat: Forest and forest borders Colombia.

Reference: del Hoyo, J., A. Elliott and J. Sargatal, Eds. Handbook of the Birds of the World, Volume 2.



#### **BLUE-CHESTED HUMMINGBIRD, *Polyerata amabilis*** Trochilidae

Chad, 2023, not yet cataloged, 1200fr

Length: 3 to 4 inches, resident, the male (shown on the stamp) is green, with a bluish-tinged glittering crown and malar area and a violet-blue chest patch; the female has a green crown.

Habitat: Forest edges, open woodland, thickets, plantations and gardens.

Range: Northeastern Nicaragua to southern Ecuador.

Reference: del Hoyo, J., A. Elliott and J. Sargatal, Eds. Handbook of the Birds of the World, Volume 5.



#### **SOUTH ISLAND OYSTERCATCHER, *Hematopus finschi*** Haematopidae

Extinct about 1915

Aitutaki, 8/18/2022, not yet cataloged,

Length: 18 inches, sexes alike, resident. Black, with a white belly and wing patch and an orange bill.

Habitat: Breeds on riverine shingled banks and fields; winters on seacoasts.

Range: South Island; winters also to the North Island, New Zealand'

Reference: del Hoyo, J., A. Elliott and J. Sargatal, Eds. Handbook of the Birds of the World, Volume 3.



#### **NEW ZEALAND GIANT PENGUIN, *Pachydyptes ponderosus***

Spheniscidae

Togo, 2023, not yet cataloged, 1000fr and 3600fr surrounds

Extinct 34 million B.C.

Length: 5 feet, sexes alike, resident. Dark above and whitish below.

Range: New Zealand.

Reference: Stonehouse, B. Science 189, 1975.

**SULAWESI GOSHAWK, *Accipiter griseiceps*** Accipitridae

Togo, 2023, not yet cataloged, 1000fr

Length: 13 to 15 inches, sexes alike, resident. Brown above and dark-streaked white below, with a gray head.

Habitat: Forest interiors, mangroves and wooded savanna.

Range: Sulawesi and nearby islands, Indonesia.

Reference: del Hoyo, J., A. Elliott and J. Sargatal, Eds. Handbook of the Birds of the World, Volume 2.

**VINOUS-BREASTED SPARROWHAWK, *Accipiter rhodogaster***

Accipitridae

Togo, 2023, not yet cataloged, 1000fr

Length: 11 to 13 inches, sexes alike, resident. Leaden gray above and vinous red below, with gray thighs.

Range: Sulawesi.

Habitat: Forest, mangroves and wooded cultivated areas.

Range: Sulawesi and nearby islands, Indonesia.

Reference: del Hoyo, J., A. Elliott and J. Sargatal, Eds. Handbook of the Birds of the World, Volume 5.

**RED-HEADED TROGON, *Harpactes erythrocephalus*** Trogonidae

Niger, 2021, not yet cataloged, 800fr

Length: 12 to 14 inches, resident. The male (shown on the stamp) is crimson, with a blue bill, purplish-blue eye-ring, rufescent-brown wings and uppertail, brown-and white undertail and a white breastline; the female has a brown breast.

Habitat: Forest.

Range: Northern Myanmar to southern China, Laos and Sumatra.

Reference: del Hoyo, J., A. Elliott and J. Sargatal, Eds. Handbook of the Birds of the World, Volume 6.

**AZURE KINGFISHER, *Ceyx azureus affinis*** Alcedinidae

Sierra Leone, 2023, not yet cataloged, 104Le Subspecies Left surrounds

Length: 7 inches, sexes alike, resident. Bright blue above and rufous below, with a reddish-tipped bill and white throat and neck patch.

Habitat: Wetlands.

Range: Morotai, Halmahera and Bacan, Indonesia

Reference: del Hoyo, J., A. Elliott and J. Sargatal, Eds. Handbook of the Birds of the World, Volume 6

**AZURE KINGFISHER, *Ceyx azureus ruficollaris*** Alcedinidae

Sierra Leone, 2023, not yet cataloged, 104Le subspecies, left surrounds

Length: 7 inches, sexes alike, resident. Rich blue above and rufous below, with a white throat and neck patch.

Habitat: Wetlands.

Range: Northern Australia.

Reference: del Hoyo, J., A. Elliott and J. Sargatal, Eds. Handbook of the Birds of the World, Volume 5





†**PRIMOBUCCO**, *Primobucco mcgrewi* †Primobucconidae

Niger, 2023, not yet cataloged, 3600fr Extinct around 50 million years ago  
Length: 12 inches, sexes alike, resident. Brightly colored Roller-like bird, with a large head.

Habitat: Leaf litter.

Range: Central United States.

Reference: D. T. Ksepka and Clarke, J. A. Journal of Vertebrate Paleontology, 30: 215, 2010.



**MOUSTACHED PUFFBIRD**, *Malacopiila mysticalis* Bucconidae

Colombia, 2024, not yet cataloged, 2000p

Length: 8 to 9 inches, sexes alike, resident, Brown above and pale rufous below, with a dark-streaked white belly and a dark-bordered white moustache.

Habitat: Undergrowth.

Range: Andes of Colombia and northern Venezuela.

Reference: del Hoyo, J., A. Elliott and J. Sargatal, Eds. Handbook of the Birds of the World, Volume 6



**NIGHT PARROT**, *Pezoporus occidentalis* Psittaculidae

Australia, 2/13/2024, not yet cataloged, \$1.20

Length: 9 inches, sexes alike, resident. Mottled dull green, with a yellow belly and undertail.

Habitat: Spinifex, on stony ridges and rocky breakaways.

Range: Western and central Australia.

Reference: del Hoyo, J., A. Elliott and J. Sargatal, Eds. Handbook of the Birds of the World, Volume 3.



**AUSTRALIAN MASKED- OWL**, *Tyto novaehollandiae kimberli* Tytonidae Subspecies

Togo, 2023, not yet cataloged, 1000fr

Length: 13 to 25 inches, sexes similar, resident, White-spotted brown above and black-spotted rufous below, with a whitish facial disc.

Habitat: Tall open forest.

Range: Northern Australia.

Reference: del Hoyo, J., A. Elliott and J. Sargatal, Eds. Handbook of the Birds of the World, Volume 5.



**EASTERN BARN-OWL**, *Tyto javanica* Tytonidae Subspecies

Togo, 2023, not yet cataloged, 1000fr

Length: 12 to 16 inches, sexes similar, resident. Golden-buff above and finely streaked pale below, with a heart-shaped facial disc.

Habitat: Open lowlands.

Range: Malay peninsula to Lesser Sumdas, Indonesia.

Reference: del Hoyo, J., A. Elliott and J. Sargatal, Eds. Handbook of the Birds of the World, Volume 5.



**GRAY-BREASTED MOUNTAIN-TOUCAN, *Andihena hupoglauca*** Ramphastidae

Colombia, 2024, not yet cataloged, 2000p

Length: 18 to 19 inches, sexes alike, resident. Brown above and blue-gray below, with a red, black and yellow bill, blackish crown, pale blue collar, green wings and a bright yellow rump.

Habitat: Wet, temperate mountain forest.

Range: Central Colombia to eastern Peru.

Reference: del Hoyo, J., A. Elliott and J. Sargatal, Eds. Handbook of the Birds of the World, Volume 7.

**SPOT-BREASTED WOODPECKER, *Colaptes punctigula*** Picidae

Colombia, 2024, not yet cataloged, 2000p

Length: 7 to 8 inches, resident. The male (shown on the stamp) is blackish-barred bronze-green above and black-spotted yellow-olive below, with a white face and a red nape and malar stripe; the female has a dark malar stripe.

Habitat: Forest, woodland and open areas,

Range: Colombia to Bolivia and Brazil.

Reference: del Hoyo, J., A. Elliott and J. Sargatal, Eds. Handbook of the Birds of the World, Volume 6.

**KASHMIR NUTCRACKER, *Nucifraga multipunctata*** Corvidae

Guinea-Bissau, 2023, not yet cataloged, 1000fr

Length: 14 inches, sexes alike, resident. White-streak-spotted blackish gray-brown, with a dark brown crown, wings and tail.

Habitat: Forest.

Range: Eastern Afghanistan to northwestern India.

Reference: del Hoyo, J., A. Elliott and J. Sargatal, Eds. Handbook of the Birds of the World, Volume 14.

**BLACK-HEADED MOUNTAIN-FINCH, *Leucosticte brandti haematopygia*** Fringillidae Subspecies

Guinea-Bissau, 2023, not yet cataloged, 3600fr

Length: 6 to 8 inches, sexes alike, resident. Gray, with a dark crown and face.

Habitat: Highlands.

Range: Northeastern Kazakhstan to China, northern Pakistan, Nepal and northern India.

Reference: del Hoyo, J., A. Elliott and J. Sargatal, Eds. Handbook of the Birds of the World, Volume 15.

**ORANGE BULLFINCH, *Pyrhura aurantiaca*** Fringillidae

Guinea-Bissau, 2023, not yet cataloged, 1000fr

Length: 6 inches, resident. The male (bird on the right) is orange, with a black face and black-and-white wings; the female (bird on the left) has a gray nape to upper back.

Habitat: Highland fir and pine.

Range: Northern Pakistan and northwestern India,

Reference: del Hoyo, J., A. Elliott and J. Sargatal, Eds. Handbook of the Birds of the World, Volume 15.





**SPECTACLED FINCH, *Callacanthis burtoni*** Fringillidae

Guinea-Bissau, 2023, not yet cataloged, 1000fr

Length: 7 inches, resident. The male (shown on the stamp) is grayish-olive above and brownish below, with a dark-bordered scarlet face; the female is dusky brown with a yellow face.

Habitat: Forest.

Range: Northwestern Pakistan to northeastern India.

Reference: del Hoyo, J., A. Elliott and J. Sargatal, Eds. Handbook of the Birds of the World, Volume 15.



**BERYL-SPANGLED TANAGER, *Tangara nigroviridis*** Thraupidae

Colombia, 2024, not yet cataloged, 2000p

Length: 5 inches, sexes alike, resident. Dark-bordered spangled white breast with a black face and upper back and blue wings.

Habitat: Humid wet montane forest, forest edges and overgrown pastures.

Range: Northwestern Venezuela to Bolivia.

Reference: del Hoyo, J., A. Elliott and J. Sargatal, Eds. Handbook of the Birds of the World, Volume 16.

Zoey can't hardly wait for the  
next issue of Biophilately!



She always gets her stamps from

**Stamp Smith**

**Topical Stamps**

U.S. and Worldwide Stamps,

Covers and Postcards

**We organize by topic!**

1212 NE 96th Terrace- Kansas City, MO 64155

Tel: 816.734.4536

Email: [smidale@umkc.edu](mailto:smidale@umkc.edu)



## INVERTEBRATES

Editor

Peter Voice, BU1863



This list compiles every marine invertebrate and select freshwater and terrestrial invertebrates (snails, land crabs, etc.) published in the Linn's Stamp News Updates from the February 2024 to the April 2024 issue.

### New Listings

Scott#	Denom	Common Name/Scientific Name	Family/Subfamily	Code
<b>AITUTAKI</b>				
<b>2023 February 10 (Giant Clam) Set/1SS</b>				
751	\$9.50	Giant Clam, <i>Tridacna</i> sp.	Cardiidae	A
<b>BRITISH INDIAN OCEAN TERRITORY* 2019 December 4 (Crabs) Set/5</b>				
516	60p	Strawberry Hermit Crab, <i>Coenobita perlatus</i>	Coenobitidae	A
517	60p	Horned Ghost Crab, <i>Ocypode ceratophthalmus</i>	Ocypodidae	A
518	£1.50	Mottled Lightfoot Crab, <i>Grapsus albolineatus</i>	Grapsidae	A
519	£1.50	Land Crab	Indeterminate	A
520	£5.00	Coconut Crab, <i>Birgus latro</i>	Coenobitidae	A
<b>COOK ISLANDS</b>				
<b>2023 October 4 (Seashells) Set/4</b>				
1767a	\$4.00	Conch	Strombidae?	A
1767b	\$4.00	Nautilus	Nautilidae	A
1767c	\$4.00	Murex	Muricidae	A
1767d	\$4.00	Murex	Muricidae	A
<b>2023 October 10 (Marine Life) Set/4</b>				
1768a	\$4.00	Hermit Crab	Indeterminate	A
1768b-d	\$4.00	various views of reef fish with coral reef in the background	Indeterminate	A
<b>ISLE OF MAN</b>				
<b>2023 February 17 (Manx Wildlife Trust 50y)** Set/10</b>				
2278c	80p	Ammonite	Indeterminate	A
2279b	£1.14	Nudibranch	Indeterminate	A
<b>JERSEY</b>				
<b>2024 January 8 (Underwater Flora and Fauna)*** Set/8 +SS</b>				
2652	60p	Snakelocks Anemone, <i>Anemonia viridis</i>	Actiniidae	A
2653	98p	Bladder Wrack, <i>Fucus vesiculosus</i>	Fucaceae	A
2654	98p	Common Limpet, <i>Patella vulgata</i>	Patellidae	A
2655	£1.65	Compass Jellyfish, <i>Chrysaora hysoscella</i>	Pelagiidae	A
2656	£2.15	Flat Periwinkles, <i>Littorina obtusata</i>	Littorinidae	A
2657	£2.95	Sea Lettuce, <i>Ulva lactuca</i> and various rockpool algae	Ulvaceae	A
2658	£3.75	Carrageen, <i>Chondrus crispus</i>	Gigartinaceae	A
2659	£4.85	Great Scallop, <i>Pecten maximus</i>	Pectinida	A

### Notes

\*British Indian Ocean Territory – Note that BIOT stamps are no longer registered by the Universal Postal Union. SC# 519 is just listed as “land crab” on the stamp and in the press releases issued by the BIOT Post. Searching “British Indian Ocean Territory Land Crab” with Google brings up mostly links related to the large Coconut Crabs. One result suggested that Land Crabs of the species *Cardisoma carnifex* are present on Diego Garcia – but are not similar enough to the one shown on the stamp to



make a positive identification. The cachet on the official FDC shows the same image of the Strawberry Hermit Crab used on SC#516 and the postmark also shows a stylized hermit crab that is likely the Strawberry Hermit Crab.

\*\*Isle of Man 2278a-e and 2279a-e highlight animals, plants, and fungi from the Isle of Man. 2278c and 2279b were the only stamps in the issue that portray marine invertebrates. Also, note that 2279b shows a fossil ammonite that has been co-listed in Michael Kogan's paleontological issues column.

\*\*\*Jersey 2566a is a souvenir sheet with issues 2653 and 2656. Note that 2653, 2657, and 2658 are not marine invertebrates.

### Issues of Related Interest:

Albania Sc# 3074a-d Underwater Archaeology (2023, October 26) depict a variety of ancient pottery resting on the seafloor. Several stamps show marine life surrounding the pottery including a starfish, sea grass, etc.

Cook Islands Sc# 1750a-d Stop Ocean Plastics Pollution (2023, February 20) depict stylized images of a whale, dolphin, sea turtle, and crab.



A selection of the new issues. A.) Aitutaki 751, B.) Cook Islands 1767a-d, C.) British Indian Ocean Territory 516-520, D.) Isle of Man 2279b, E.) Jersey 2652-2659, F.) Albania 3074a-d.



## ENTOMOLOGY

### Editors

Don Wright BU 243  
and Jose Reis BU 1889



### New Listings

Scott#	Denom	Common Name/Scientific Name	Family/Subfamily	Code
<b>ARUBA</b>				
		<b>2023 February 1</b>		
320c	Western Honeybee, <i>Apis mellifera</i> L.		API, Apinae	B
<b>ASCENSION</b>				
		<b>2024 April 24</b>		
50p	<i>Indiophocus mendeli</i> Lienhard		Psocidae, Psocinae	A
55p	<i>Erechthias grayi</i> Davis & Mendel		TIN, Erechthiinae	A
65p	Spider <i>Garypus</i> sp.		Arachnidae	A
£1.60	<i>Discophallus ascension</i> Gorochov		Mogoplistidae, Mogoplistinae	A
<b>AUSTRIA</b>				
		<b>2024 March 2</b>		
120c	Black Pit Beetle, <i>Carabus nodulosus</i> Creutzer		CAR, Carabinae	A
<b>BOSNIA &amp; HERZEGOVINA</b>				
		<b>2022 November 1</b>		
a-d, 4x1.80m.	Western Honeybee, <i>Apis mellifera</i> L.		API, Apinae	A
<b>BOSNIA &amp; HERZEGOVINA - Serb Admin. 2023 December 4</b>				
a, 1.10m	European Rhinoceros Beetle, <i>Oryctes nasicornis</i> L., ♂		SCA, Dynastinae	A
b, 1.10m	Alpine Longhorn, <i>Rosalia alpina</i> L.		CER, Cerambycinae	A
c, 1.10m	Giant Capricorn, <i>Cerambyx cerdo</i> L.		CER, Cerambycinae	A
d, 1.10m	Beech Longhorn, <i>Morimus asper funerius</i> Mulsant		CER, Lamiinae	A
<b>BOTSWANA</b>				
		<b>2022 December 8</b>		
2,7,9,10p.	HAWKMOTH, in margin of baobab tree s/t		Sphingidae	Z
		<b>2024 February 29</b> (Butterflies of the Great Thirstland)		
1p	African Migrant, <i>Catopsilia florella</i> Fabr.		PIE, Coliadinae	A
8p	African Monarch, <i>Danaus chrysippus</i> L.		NYM, Danainae	A
10p	Spotted Joker, <i>Byblia ilithyia</i> Drury		NYM, Biblidinae	A
20p	Painted Lady, <i>Vanessa cardui cardui</i> L.		NYM, Nymphalinae	A
10p & 20p above, s/t of 2.	Margin: butterflies puddling:			
	African Migrant, <i>Catopsilia florella</i> Fabr., yellow=♀ greenish=♂		PIE, Coliadinae	Z
	Pea Blue, <i>Lampides boeticus</i> L.		LYC, Polyommatae	Z
	African Orange Tip, <i>Colotis evenina evenina</i> Wallengren		PIE, Pierinae	Z
	Yellow Pansy, <i>Junonia hierta cebrene</i> Trimen		NYM, Nymphalinae	Z
<b>CZECH REPUBLIC</b>				
		<b>2024 May 7</b>		
E (44k)	Great Diving Beetle, <i>Dytiscus marginalis</i> L.		DYT, Dytiscinae	A
<b>DENMARK</b>				
		<b>2011</b> (Nirbuha's Arabian Expedition)		
1537a 8k	SCARAB BEETLE		Scarabaeidae	B
<b>FAROE ISLANDS</b>				
		<b>2023 August 10</b>		
100k	A MOTH? or BUTTERFLY, by rock cairn.		Lepidoptera	C
<b>FINLAND</b>				
		<b>2024 May 8</b> (Europa)		
€1.15	<i>Macrolea pubipennis</i> Reuter		CHR, Donaciinae	A

**FRANCE****2024 February 12**

4x€1.29 Flowers

Margin: Peacock, *Nymphalis io* L.

NYM, Nymphalinae Z

**GHANA****2023**a, 12ce Garden Acraea, *Acraea horta* L.

NYM, Heliconiinae A

b, 12ce Round-winged Orange Tip, *Colotis euippe* L., ♀

PIE, Pierinae A

c, 12ce Blue Pansy, *Junonia orithya* L.

NYM, Nymphalinae A

d, 12ce Yellow Pansy, *Junonia hierta* Fabr.

NYM, Nymphalinae A

e, 12ce African Common White, *Belenois creona* Cramer

PIE, Pierinae A

Margin L-R: 1,3,5: Butterfly silhouettes

NYM, Heliconiinae Z

2,4: *Danaus* sp. silhouettes

NYM, Danainae Z

a, 15ce Citrus Swallowtail, *Papilio demodocus* Esper

PAP, Papilioninae A

b, 15ce Mimic, *Hypolimnas misippus* L.

NYM, Nymphalinae A

20ce Blue-Spot Commodore, *Precis westermanni* Westwood

NYM, Nymphalinae A

**GREAT BRITAIN****2024 April 15** (100 Years of Commemorative Stamps)j, 1st Painted Lady, *Vanessa cardui* L. With Queen

NYM, Nymphalinae B

**Isle of Man****2024 March 7**85p, £1.28, 2x£1.60, £2.31, £3.21. W. Honeybee, *Apis mellifera* L.

API, Apinae A

**2024 April 3**EU Rate. Garden Tiger Moth, *Arctia caja* L.

ARC, Arctiinae A

**HUNGARY****2024 February 20** (Easter)

Domestic Rate. Stylized SWALLOWTAIL BUTTERFLY

PAP, Papilioninae B

**KOREA, SOUTH****2023**2x430w Western Honeybee, *Apis mellifera* L.

API, Apinae A

**KYRGYZSTAN****2024 April 30**50s Matriarchal Katydid, *Saga pedo* Pallas

TET, Saginae A

75s Galathea Tiger Beetle, *Cephalota galathea* Thieme

CAR, Cicindelinae A

150s Kuznetsov's Longicorn Wasp, *Masaris longicornis* Kuznezov

MAS, Masarinae A

300s Southern Swallowtail, *Papilio alexanor* Esper

PAP, Papilioninae A

300s Kirgizobia Longicorn Beetle, *Kirgizobia bohnei* Danilevsky

CER, Lepturinae A

**LIBERIA****2023** (Stamperija LIB-23,0119b1)\$800, LL: *Heliocopris midas* Fabr.,

SCA, Scarabaeinae

UL&UR: *Mylabris variabilis* Pallas,

MEL, Meloinae

LR: *Scarabaeus sanctus* Fabr.,

SCA, Scarabaeinae

Margin UL&LR: *Truxalis nasuta* L.,

ACR, Acridinae

L: *Tortricidia pallida* Herrich-Schaeffer,

LIM, Limacodidae

UR: 3 INSECTS

**LIECHTENSTEIN****2024 March 4** (2009 issue surcharged)100rp on 130rp Marbled White, *Melanargia galathea* L.

NYM, Satyrinae A

120rp on 200rp Spotted Darter, *Sympetrum depressiusculum* Selys,

LIB, Sympetrinae A

250rp on 110rp Alpine Silver Ant, *Formica selysi* Bondroit

FOR, Formicinae A

**MYANMAR****2024 February 1**200k Golden Birdwing, *Troides aeacus thomsonii* Bates

PAP, Papilioninae A

**2024 April 10**200k Old World Swallowtail, *Papilio machaon* L.

PAP, Papilioninae A

Margin: Monarch, *Danaus plexippus* L.

NYM, Danainae Z



**NETHERLANDS****2024 February 12**

- a, €1.09 Little Yellow, *Eurema lisa* Boisduvl & Leconte  
 b, €1.09 Hanno Blue, *Hemiargus hanno* Stoll  
 c, €1.09 Mimic, *Hypolimnas misippus* L.  
 d, €1.09 Monarch, *Danaus plexippus* L.  
 e, €1.09 Fiery Skipper, *Hylephila phyleus* Drury  
 f, €1.09 White Peacock, *Anartia jatrophae* Johansson  
 g, €1.09 Variable Cracker, *Hamadryas feronia* L.  
 h, €1.09 Disjunct Scrub-Hairstreak, *Strymon bubastus* Stoll  
 i, €1.09 Great Southern White, *Ascia monuste* L.  
 j, €1.09 Gulf Fritillary, *Agraulis vanillae* L.

Margin UL: Fiery Skipper, *Hylephila phyleus* Drury

LL: BUTTERFLY

UR: Variable Cracker, *Hamadryas feronia* L.R: Monarch, *Danaus plexippus* L.,

PIE, Coliadinae A  
 LYC, Polyommatainae A  
 NYM, Nymphalinae A  
 NYM, Danainae A  
 HES, Hesperinae A  
 NYM, Nymphalinae A  
 NYM, Biblidinae A  
 LYC, Theclinae A  
 PIE, Pierinae A  
 NYM, Heliconiinae A  
 HES, Hesperinae Z  
 Lepidoptera Z  
 NYM, Biblidinae Z  
 NYM, Danainae Z

**2024 March 20**

- a. Cinnamon Bug, *Corizus hyoscyami* L.  
 b. *Megachile willughbiella* Kirby  
 c. Dark Crimson Underwing, *Catocala sponsa* L.  
 d. Eyed Ladybird Beetle, *Anatis ocellata* L.  
 e. Rosemary Beetle, *Chrysolina americana* L.  
 f. *Meliscaeva cinctella* Zetterstedt  
 g. Green Shield Bug, *Palomena prasina* L.  
 h. Dark Whiteface, *Leucorrhina albifrons* Burmeister  
 i. European Stag Beetle, *Lucanus cervus* L.  
 j. Yellow Meadow Ant, *Lasius flavus* Fabr.

RHO, Rhopalinae A  
 MEGA, Megachilinae A  
 EREB, Erebininae A  
 COC, Coccinellinae A  
 CHR, Chrysomelinae A  
 SYR, Syrphinae A  
 PEN, Pentatominae A  
 LIB, Leucorrhiniinae A  
 LUC, Lucaninae A  
 FOR, Formicinae A

**2024 April 22** (Nature's Designs)

- h. African Monarch, *Danaus chrysippus* L.

NYM, Danainae A

**POLAND****2024 February 21**

- a&g, 2.90zl Atlas Moth, *Attacus atlas* L.  
 b&h, 2.90zl Skeletonized Leafwing, *Zaretis itys* Cramer  
 c&e, 2.90zl Orange Leafwing, *Kallima inachus* Boisduval  
 d&f, 2.90zl Green Birdwing, *Troides priamus* L.

SAT, Saturniinae A  
 NYM, Charaxinae A  
 NYM, Nymphalinae A  
 PAP, Papilionidae A

**2024 March 27**

- c, 3.90zl African Monarch, *Danaus chrysippus* L., with balloon

NYM, Danainae C

**2024 April 26**

- a, 4.90zl 7-Spotted Ladybird, *Coccinella septempunctata* L.  
 b, 4.90zl Migrant Hawker, *Aeschna mixta* Latreille

COC, Coccinellinae A  
 AES, Aeschninae A

**PORTUGAL****Azores****2023**

- c. Citrine Forktail, *Ischnura hastata* Say, ♀

COE, Ischnurinae A

**2023 August 14**

- €1.05. Azorean Large White, *Pieris brassicae azorensis* Rebel

PIE, Pierinae A

**ST. MARTIN****2022 May** (The Friendly Island)

- a,b,c. 8x95c. Many tiny stylized BUTTERFLY silhouettes

Lepidoptera C

**SAN MARINO****2024 March 19**

- €1.30, *Scarodytes ruffoi* Franciscolo

DYT, Hydroporinae A

**SLOVAKIA****2023 June 30**

- a, €2.70 Western Honeybee, *Apis mellifera* L., 2 bees API, Apinae A  
 b, €2.70 Western Honeybee, *Apis mellifera* L., Only 1 bee API, Apinae A  
 S/T of 3 each of above with 7 more BEES in s/t margin

**SWEDEN****2023** (Joy of Harvest)

- Brev. Red Admiral, *Vanessa atalanta* L. NYM, Nymphalinae B

**2023**

- b, 3x1k Fritillary BUTTERFLY. Also in margin NYM, Heliconiinae BZ

**SWITZERLAND****2024 March 7** (Swiss micro nature)

- 120c Old World Swallowtail, *Papilio machaon* L., ♀ Wing close up PAP, Papilioninae A

**TAJIKISTAN****2021**

- a, 5s 2 Cats playing with a BEETLE Coleoptera C  
 b, 5.20 2 cats watching *Danaus* sp. NYM, Danainae C  
 d, 5s Cats & BUTTERFLY Pieridae C

**UNITED STATES****2024**

- 64c on #4462 Monarch, *Danaus plexippus* L. NYM, Danainae A  
 65c on #4603 Baltimore Checkerspot, *Euphydryas phaeton* Drury NYM, Nymphalinae A  
 66c on #4736 Spicebush Swallowtail, *Papilio troilus* L. PAP, Papilioninae A  
 70c on #4859 Great Spangled Fritillary, *Speyeria cybele* Fabr. NYM, Heliconiinae A  
 Sur on #4999 Eastern Tiger Swallowtail, *Papilio glaucus* L. PAP, Papilioninae A  
 Sur on #5136 Eastern Tailed Blue, *Cupido comyntas* Godart LYC, Polyommatainae A  
 Sur on #5346 California Dogface, *Zerene cesonia* Boisduval PIE, Coliadinae A  
 Sur on #5568 Colorado Hairstreak, *Hypaurotis crysalus* Edwards LYC, Theclinae A

**BEYOND THE CATALOGS:**

Stamps not recognized by standard catalogs and many are of doubtful validity.

If you wish further details on the following entries, contact Don at: aa2f@arrl.net

**CENTRAL AFRICAN REP.** 2022. (Stamperija CA-22\*\*\*\*a-d), Bees & Wasps, s/t of 4

**GUINEA-BISSAU.** 2022-. (Stamperija GB-220117a,b). Moths, s/t of 3, S/S of 1  
 2022-11-30. (Stamperija GB-220316a,b1). Beetles, s/t of 4, S/S of 1  
 2022-10-09. (Stamperija GB-220317b2), Mosquitoes, s/s of 1

**LIBERIA.** 2023. Stamperija LIB-230119b1, \$800. Insects, s/s of 1

**TOGO.** 2023-02-24. Stamperija TG-230103a, 3x1200fr. Insects, s/t of 3  
 2023-02-24. Stamperija TG-230103b, 3600fr. Insects, s/s of 1  
 2023. (Stamperija TG-23\*\*\*\*), 100-1050fr. 37 Butterflies, s/t of 16  
 2023. (Stamperija TG-23\*\*\*\*). 3x1200fr. Wasps. Also in margin



## PALEONTOLOGY

Editor

Michael Kogan, BU 1863



### Scott Numbers assigned to the previously reported stamps

**HONG KONG 2022 11 15** "Dinosaurs", reported in Vol. 71(4), got the Scott number: 2262-2267  
Scott Update April 2024

More details: [https://www.paleophilatelie.eu/description/stamps/hong\\_kong\\_2022.html](https://www.paleophilatelie.eu/description/stamps/hong_kong_2022.html)

**MEXICO 2023 07 17** "Prehistoric Dimensions", reported in Vol. 73(1), got the Scott number: 3299a-c, d, Scott Update May 2024

More details: [https://www.paleophilatelie.eu/description/stamps/mexico\\_2023.html](https://www.paleophilatelie.eu/description/stamps/mexico_2023.html)

**MONGOLIA 2023 12 21** "Ice Age Animals", reported in Vol. 72(3), got the Scott number: 3057a-d, Scott Update May 2024

More details: [https://www.paleophilatelie.eu/description/stamps/mongolia\\_2023.html](https://www.paleophilatelie.eu/description/stamps/mongolia_2023.html)

**SPAIN 2023 04 19** "JUVENIA, Teruel, Dinosaurs - Aragosaurus ischiaticus", reported in Vol. 72(2), got the Scott number: 4684, Scott Update May 2024

More details: [https://www.paleophilatelie.eu/description/stamps/spain\\_2023\\_dino.html](https://www.paleophilatelie.eu/description/stamps/spain_2023_dino.html)

### New Issues

**BOLIVIA 2018** "Dinosaurs" overprinted

Dinosaur stamps from 2012 were overprinted with red mark with the text "Agencia Boliviana de Correos". According to Bolivian Philately website <http://filateliabolivia.com>, In 2018, Bolivian Post Authority liquidated the company who produced postage stamps of Bolivia between 1993 and 2017 - "la Empresa de Correos de Bolivia" (ECOBOL). To prevent new, illegal, prints or use



of the stamps which left in the stock of ECOBOL, the stamps in the stock of Bolivian Post were overprinted between May and June 2018, with small red mark "Agencia Boliviana de Correos". The mark was made in several sizes between 9.9mm and 10.8mm.

The Scott numbers: 1503A - 1506A (the same numbers as original stamps, but with "A" character).

The numbers were assigned in Scott Updates of October 2013, December 2023 and February 2024. More details about original stamps from 2012 are here:

[https://www.paleophilatelie.eu/description/stamps/bolivia\\_2012.html](https://www.paleophilatelie.eu/description/stamps/bolivia_2012.html)

**CHINA 2024 04 18** "Chengjiang Fossils"

1.20 *Microdictyon sinicum*

1.20 *Cricocosmia jinningensis*

1.20 *Fuxianhuia*





**KYRGYZSTAN 2024 04 30 "Prehistoric animals of Kyrgyzstan"**

KGS 50 - *Sharovipteryx mirabilis*

KGS 150 - Stegosaur

KGS 300 - *Ferganasaurus verzilini*

More details: [https://www.paleophilatelie.eu/description/stamps/kyrgyzstan\\_2024.html](https://www.paleophilatelie.eu/description/stamps/kyrgyzstan_2024.html)

**LUXEMBOURG 2024 05 14**

"EUROPA: Underwater Fauna & Flora"

L50g Ichthyosaur

E50g *Plesiosaurus*



**GREAT BRITAIN 2024 03 12 "The Age of the Dinosaurs"**

First Class - *Tyrannosaurus*

£2 - *Stegosaurus*

First Class - *Triceratops*

£2 - *Diplodocus*

First Class - *Coloborhynchus*

£2 - *Megalosaurus*

First Class - *Iguanodon*

£2 - *Cryptoclidus*



First Class - Mary Anning: portrait

First Class - Ichthyosaur *Communis*

First Class - *Dapedium politum*

First Class - Plesiosaur *Macrocephalus*

\* First Class rate was equivalent to £1.25 at the time of issue.

\* £2 is the international economy rate for letters up to 100 grams.



#### ---- Stamps of Stamperija ----

Note: Since 2012 the agency issues too many stamps per year on behalf of a dozen of their clients for every possible popular topic, prehistoric animals. In most of the cases these stamps have no relation to the issuing country. Reconstructions of the prehistoric animals are often not accurate.

These stamps are not recommended for serious collectors and are undesired at serious philatelic exhibits.

**BURUNDI 2023 11 09** "Dinosaurs" M/S 4 (reprint from 2013)

**CENTRAL AFRICAN REPUBLIC 2023 07 05**

"Dinosaurs" M/S 3, S/S 1

"Extinct mammals" M/S 3, S/S 1

**GUINEA 2023 09 05**

"Prehistoric humans" M/S 5, S/S 1

"Meteorites" M/S 5, S/S 1 (dinosaurs depicted on some stamps and selvages of S/S)

**GUINEA-BISSAU 2023 05 22**

"Fossils" M/S 4, S/S 1

"Prehistoric water animals" M/S 4, S/S 1

"Extinct mammals" M/S 4, S/S 1

**LIBERIA 2023 06 30**

"Fossils" M/S 6, S/S 1

"Prehistoric water animals" M/S 6, S/S 1

"Flying dinosaurs" [\*1] M/S 6, S/S 1

"Extinct birds" M/S 6, S/S 1

**2023 10 09** "200th anniversary of Alfred Russell Wallace" M/S 4, S/S 1 x2

**NIGER 2023 04 20**

"Extinct species" M/S 4, S/S 1

"Dinosaurs" M/S 4, S/S 1

**SIERRA LEONE 2023 08 11**

"Extinct species" M/S 6

**TOGO 2023 12 20**

"215th anniversary of Charles Darwin" M/S 3, S/S 1

**2023 06 28**

"Fossils" M/S 4, S/S 1

"Dinosaurs" M/S 4, S/S 1

"Flying dinosaurs" [\*1] M/S 4, S/S 1

#### Personalized stamps

**NETHERLANDS 2023 06 13** "Prehistoric animals (IV)" M/S 5 x3

*Tranotocetus marecermanicum* - the large sieved whale,

*Trogontherium cuvieri* - the giant beaver

*Bison priscus* - the steppe bison







**KYRGYZSTAN 2024 04 30 "Prehistoric animals of Kyrgyzstan" - FDC**

**LUXEMBOURG 2024 05 14 "EUROPA: Underwater Fauna & Flora" - FDC**



**GREAT BRITAIN 2024 03 12  
"The Age of the Dinosaurs" - FDC**



**UK, Kimmeridge 2024 04 05**

Addition postmark related to  
"The Age of the Dinosaurs"  
stamps issue



### Future Issues

- 8.05.2024 Moldova - "National Museum of Ethnography and Natural History" - fossils of the cave bear (*Ursus spelaeus*)
- 21.06.2024 France - "50 years - Discovery of Lucy" - the Lucy or Dink'inesh, is a collection of several hundred pieces of fossilized bone comprising 40 percent of the skeleton of a female of the hominin species *Australopithecus afarensis*. It was discovered in 1974 in Ethiopia.
- 16.09.2024 Poland - "Dinosaurs" - set of 3 stamps
- ???.2024 France - "The Chauvet cave - Ardèche". The decorated cave of Pont d'Arc, Chauvet-Pont d'Arc cave or simply Chauvet a cave, discovered in 1994, is a Paleolithic decorated cave located in the territory of the commune of Vallon-Pont-d'Arc (southern Ardèche, France ).
- Q4 2024 Peru - "Fossils of Peru: *Perucetus colossus*"
- ?.2025 Germany - "National Archaeological Finds: UNESCO World Heritage: Caves and Ice Age Art of the Swabian Alb". One stamp will be released in the multi-year set "UNESCO World Heritage". Perhaps there will be a cave painting of prehistoric animals or art objects depicting prehistoric man or prehistoric animals depicted on the stamp.

### Notes:

[\*1] Flying dinosaurs is wrong term, as dinosaurs per definition are terrestrial animals. The flying reptiles called Pterosaurs. Flying dinosaurs is not a correct term to apply to the animals shown on these stamps. The animals pictured are pterosaurs. Pterosaurs are a group of flying reptiles in the Archosauria. Reptiles in the archosaurs include crocodiles, dinosaurs, and pterosaurs.

If you know about any recent or feature Paleontology related stamp not listed above, please send a short message to our Associated Editor Mr. Michael Kogan [admin@paleophilatelie.eu](mailto:admin@paleophilatelie.eu) or per post to the magazine, address is on the beginning of the magazine.

Images and description of all stamps, postal stationeries and postmarks mentioned above can be seen on the following website: <http://www.paleophilatelie.eu/year/2023.html> and <http://www.paleophilatelie.eu/year/2024.html>



<https://www.paleophilatelie.eu> is the most comprehensive resource about Paleontology and Paleoanthropology in Philately, the place where Paleontology and Paleoanthropology meets Philately. Currently this website shows images of over 1000 stamp sets and over 1600 postmarks, as well as some other philatelic materials from almost 200 countries and territories. The website contains many hundreds of articles related to this topic and many examples of philatelic exhibits.