

BIOPHILATELY

OFFICIAL JOURNAL OF THE BIOLOGY UNIT OF ATA

JUNE 2015

VOLUME 64, NUMBER 2

To “Error” is Human



Vic Eichler

Amphibian Contributions

More Inside >>



IN THIS ISSUE

From the Editor’s Desk	83
President’s Message	84
Secretary-Treasurer’s Corner	85
News of Note.....	86
Glossary.....	138

NEW ISSUES:

Botany – Christopher E. Dahle	93
Fungi – Paul A. Mistretta	102
Mammalia – Michael Prince.....	103
Ornithology – Glenn G. Mertz.....	105
Invertebrates – Ian Hunter	115
Entomology – Donald Wright, Jr.....	119
Paleontology – Michael Kogan	131

ARTICLES & ILLUSTRATIONS:

Amphibian Contributions to Science – Dr. Vic Eichler	87
World of Butterflies & Moths Part 4– Vladimir Kachan	89
New Birds in the Philatelic Aviary – Charles E. Braun	111
New Zealand Color Missing Errors – Jack R. Congrove	130
Biology Reference Websites.....	135

BIOPHILATELY**Editor**

Jack R. Congrove
P.O. Box 33092, Fort Lewis, WA 98433, USA
jackcongrove@comcast.net

Publisher

Richard Roman
Dick.Roman@SbcGlobal.Net

Associate Editors

Christopher E. Dahle *Botany*
1401 Linmar Dr. NE, Cedar Rapids, IA 52402
chris-dahle@fastermac.net

Dr. Paul A. Mistretta *Fungi*
4148 Commodore Dr., Atlanta, GA 30341
paulmistretta70@gmail.com

Michael J. Prince *Mammalia*
"Dorset," Grove Road, Ash Vale, Aldershot, Hants. U.K.
Michael.Prince@bushinternet.com

Glenn G. Mertz *Ornithology*
625 N. Lafayette St., Allentown, PA 18104
ggmertz@juno.com

Charles E. Braun *New Birds*
7 Winthrop Drive, Aiken, SC 29803
charlesebraun@gmail.com

Kris P. Lindstrom *Ichthyology*
P.O. Box 51008, Pacific Grove, CA 93950
kplenviro2@sti.net

Ian Hunter *Invertebrate Zoology*
77 Edgevalley Way NW, Calgary, AB
T3A 4X7, Canada
ighunter@shaw.ca

Donald P. Wright, Jr. *Entomology*
84 Woosamonsa Rd., Pennington, NJ 08534
don.aa2f@verizon.net

Michael Kogan *Paleontology*
Munich, Germany
admin@paleophilatelie.eu

BIOLOGY UNIT OF ATA

Alan J. Hanks **President**
34 Seaton Drive, Aurora, ON Canada L4G 2K1

Laurence E. Davidson **Vice-President**
P.O. Box 154, Tobermory, ON Canada N0H 2R0

Christopher E. Dahle **Secretary/Treasurer**
1401 Linmar Dr. NE, Cedar Rapids, IA 52402

Directors

Jack R. Congrove (Washington)
John Pereira (Massachusetts)
Dr. Frederick C. Skvara (New Jersey)
Donald P. Wright, Jr. (New Jersey)

Publicity Director

William Cochran
9/30 William Street, Castlemaine, Victoria
3450 Australia
enquiries@philatelicdatabase.com

Librarian

Mark Reineke
925 Boychuk Drive, Saskatoon, SK
S7H 4L6 Canada
mikadoate@sasktel.net

Website

www.biophilately.org

The Biology Unit, founded in 1951, is a study unit of the American Topical Association dedicated to the international cooperative study of biological postage stamps and related material.

Back copies of *Biophilately* are available from the Librarian. Copies of separate articles are available at a charge six cents per page. Please contact the individual associate editors if you have queries about the content of their columns.

Send membership enquiries and change of address notices to the Secretary, Chris Dahle, (319) 364-4999. See the following page for dues rates.

The purpose of this journal is to provide members with informative articles dealing with biological topics and to publish listings covering the new **zoological** and **botanical** issues of the world, identified and classified to the best of our ability.

Please send letters, comments on the journal, articles, or new material to the Editor (data above). The Publisher will handle requests for issues from the current year. Contact the Librarian (address above) for copies of all other issues.

NOTE: Please provide a self-addressed envelope with the necessary return postage (or International Reply Coupons, if available) for all enquiries requiring an answer.

The term Scott and Scott Catalogue numbers are trademarks of Amos Philatelics, Inc., dba Scott Publishing Company.

PLEASE NOTE: Material for the next issue should be in the hands of the Editor before 15 August 2015.

FROM THE EDITOR'S DESK

Another busy philatelic spring has kept my calendar full. As I write this, I just returned from the Pacific International Philatelic Exhibition (PIPEX) in Portland, Oregon. This is one of the American Philatelic Society's World Series of Philately shows, and despite its name it is a national level show. It gets its international appellation because it is sponsored by the Northwest Federation of Stamp Clubs, which includes groups not only from Alaska, Washington, Oregon, and Idaho, but also from British Columbia and Alberta, Canada.

I served as the American Topical Association ambassador at PIPEX and along with other assistants, we signed up four new ATA members.

One other hat I have been wearing is that of co-chairman of the National Topical Stamp Show that will be held this year in the Portland area from 31 July to 2 August. The other co-chairman is Orlando Trier from the Oregon Stamp Society. See the news story about the NTSS on page 86. At PIPEX, we managed to recruit two additional dealers for the NTSS bourse. So, I can say PIPEX was a successful event from the ATA perspective.

In addition to my ATA duties, I have been deeply involved in organizing another national level stamp exhibition in Seattle. As you may recall from the announcement in the last edition, SEAPEX has been approved as the newest WSP exhibition by the APS. We have great plans for a terrific show. We already have more dealers committed than previous years and the applications for philatelic exhibits are arriving with increased frequency.

This year our theme celebrates the 75th anniversary of the Tacoma Narrows Bridge, which famously collapsed four months after it opened in 1940. We will have several bridge-themed events and displays as well as many interesting presentations and seminars. I cordially invite all of you to visit our show, which will be held 11-13 September at the Tukwila Community Center near the SeaTac International Airport. See our website at www.seapexshow.org.

This edition of the journal includes no Ichthyology or Herpetology columns. I am still looking for an associate editor for Herpetology. Some of the new issues listings are quite lengthy. The biology topic is currently the most prevalent one for new issues. Only celebrities on stamps come close to challenging it.

This edition concludes the four-part article on butterflies and moths by Vladimir Kachan. There is also an interesting article by Dr. Vic Eichler dealing with the contribution amphibians have made to the advancement of science.

I would like to see articles on subjects from our other departments. I am quite certain that every one of our members has a story about a subject on a stamp or group of stamps in their collections. Please write a few paragraphs about it and send them to me. Do not worry about formatting or grammar. I will take care of all that as editor. I just need your words.

Summer is nearing and this is the time of the year that many stamp collectors turn their attention to other activities, but it is also the season that hosts the most stamp shows. In addition to the NTSS, the APS StampShow will be held in Grand Rapids, Michigan, from 20–23 August.

I wish all of our members a safe and pleasant summer.

Jack R. Congrove

DUES RATES (US\$)

Regular membership (US & Canada)	\$20
Overseas membership	\$25
Overseas airmail (add)	\$10
On-line membership	\$15

ADVERTISING RATES

Full page insertion	\$20
Half page insertion	\$10
Quarter page insertion	\$5

Please see the Biology Unit website (www.biophilately.org) for membership applications. Several payment options are available. Send applications and payments payable to the Biology Unit of ATA to: Chris Dahle, 1401 Linmar Drive NE, Cedar Rapids, IA 52402

PRESIDENT'S MESSAGE

[*Ed. Note: Our readers will have to get along with a substitute message from your editor in place of the usual President's Message.*]

Our illustrious President planned to attend the Rocky Mountain Stamp Show in Denver where they were hosting an all-Africa gathering of collectors. Alan is an advanced collector of Rhodesia. Perhaps he became so excited about his trip that he overlooked the reminder to send me his quarterly message that usually fills this space.

In any case, the deadline has been reached and I have not received his cheerful input, and I have been unable to contact him by any means.

So, I will fill in for him and remind our members about the upcoming National Topical Stamp Show in Clackamas, Oregon, where the Biology Unit will be the featured study unit, which I am sure is something that he would have mentioned.

We all hope to hear from him in the next edition.



Flora & Fauna

New issues  FDCs and Stamps

www.fauna-stamps.com

 **Philately Company s.r.o.**
Radouňova 2681/24, 155 00, Prague, Czech Republic
E-mail: info@fauna-stamps.com / Telefon: + (420) 773 133 955

SECRETARY-TREASURER'S CORNER

If you have not yet paid your membership dues for 2015, please send them as soon as possible to the Secretary-Treasurer, Chris Dahle at: 1401 Linmar Dr. NE, Cedar Rapids, IA 52402.

TREASURER REPORT

The Unit treasury has a healthy quantity of assets. However, this year our expenditures greatly exceeded our income. This was due in part to our donation of \$1,286.42 to the ATA to pay costs associated with the publication of the *Insects of Stamps* handbook (HB164) by Donald Wright, one of our members.

You may not be aware, but the ATA is operating under a very tight budget and they do not have a lot of money to fund all the things they would like to accomplish.

Despite this one-time expenditure, our expenses involving printing and postage alone exceeded the amount of our income. There are two ways that each of the members can help to move our net from the red to the black.

One way is to add a donation when you send in your dues. We would also like to remind those who are life members that they can also continue to contribute. One method that provides an advantage for those members who must make mandatory withdrawals from IRAs or retirement plans is to make a direct transfer to the Unit treasury.

Another way to help is to take electronic delivery of the Unit journal instead of receiving a printed copy by mail. Not only will this reduce our costs for printing and postage, but it will also enable you to get a copy of each edition as soon as it is published.

Thanks to the following members who provided donations this year: Adler, Applebaum, Arias, Bono, Brunt, Burch, Clark, Congrove, Douglas, Eichler, Eyster, Freytag, Greve, Grimstad, Hamilton, Hamman, Hanks, Harrison, Herrmann, Herzog, Kavalecs, Mauney, Mirando, Moravec, Nystuen, Prince, Reineke, Setterberg, Sheppard, Stragnell, Svoboda, Vaughn, Wongpakdee, Yagi.

Assets:	
Checking	\$17,569.96
Total	\$17,569.96
Expenses:	
Credit card fees to ATA	\$9.75
PayPal charges	\$13.58
Domain name	\$14.95
Website Charges	\$101.49
Post Office box rental	\$76.00
Postage Canada	\$94.02
Postage Foreign	\$444.60
Postage U.S.	\$753.20
Printing	\$1,320.05
Supplies	\$100.11
Sales tax	\$93.44
Handbook publishing	\$1,286.42
Total	\$4,307.61
Income:	
Dues	\$1,329.00
Donations	\$475.00
Reprints and publications	\$30.00
Total	\$1,834.00

NEW MEMBERS

There are no new members to report for this period. Let this be a call for each of you to go and recruit someone. The Biology topic is immensely popular. It is likely that someone in your local club is a collector of something related to zoology or botany. Sign them up.

REINSTATEMENT

Welcome back.

949 Tim Phipps, Sittingbourne, Kent, England

shells (6), insects (7)

NEWS OF NOTE

NATIONAL TOPICAL STAMP SHOW

Your editor is serving as co-chairman for the National Topical Stamp Show that will be held 31 July through 2 August 2015, in Clackamas, Oregon, a suburb of Portland. The other co-chairman is Orlando (Orlie) Trier. We are finalizing our preparations to make this a fabulous exhibition. This is the annual national level exhibition sponsored by the American Topical Association (ATA). I believe it is the largest topical stamp show in the world.

The show will take place in the Monarch Hotel, which is the same venue that hosted NTSS in 2008. The hotel has been renovated since that time and it is offering special show room rates starting at \$99 plus tax. These rates are only good until 29 June 2015, so you need to make your reservations now. See the NTSS website at <http://www.americantopicalassn.org/ntss/ntss2015.shtml>, for information and links to the hotel reservations.

Although this show focuses on topical collecting, the more than 20 dealers that will be on hand stock the entire range of philatelic materials and supplies. If you have a friend who is not a topical collector, bring them along.

In addition to the dealer bourse that also includes several cachet makers, the show will feature an all-thematic philatelic exhibition. There will also be a judged Study Unit Literature Competition in which our own journal, *Biophilately*, will be entered.

Unlike most other national level stamp shows, NTSS also offers several very special events. On Thursday before the show opens, the ATA will offer a Portland City Tour. This tour is sponsored by Orlie Trier. It begins with lunch at the McMenemy's Kennedy School followed by a stop at the Northwest Philatelic Library and a tour of the Pittock Mansion. The final stop will be at Powell's City of Books, the largest new and used book store in the world. See the NTSS website indicated above for more details.

On Monday following the show, the ATA will offer a full day tour to Mount Saint Helens National Volcanic Monument. This spectacular site is on the bucket list of many people. See a full description of this tour at the NTSS website indicated above.

The President's Reception will take place on Friday evening at the Old Spaghetti Factory across the street from the Monarch Hotel. This event is a chance to socialize and enjoy good food with other topical collectors.

On Saturday, the ATA will present its awards banquet at the Monarch Hotel. Following a buffet dinner, the Distinguished Topical Philatelist for 2015 will be introduced and exhibition awards will be presented. This year the DTP is our own Donald Wright, Associate Editor for the Entomology column. The Biology Study Unit has contributed \$1000 from our treasury to sponsor this event. Again, see the NTSS website for full details.

It is entirely appropriate that this year's DTP is a member of the Biology Unit because our Unit is the featured study unit at NTSS 2015. I strongly urge all of our Unit members to attend the show this year to help celebrate this recognition. The Biology Unit will hold its annual meeting at NTSS on Saturday, 1 August at 10:00 AM.

You can register for the show in advance on the NTSS website. I expect Unit members will all get a snazzy ribbon to wear. These shows offer a great opportunity to meet and socialize with other collectors who share your collecting interests and to shop with dealers who specialize in topical materials. There are presentations and other events that will be of interest to everyone.



AMPHIBIAN CONTRIBUTIONS TO SCIENCE

Dr. Vic Eichler, BU1850

Demonstration of Nerve Conduction and Muscle Contraction

The Italian physician Luigi Galvani (1737-1798) discovered what he called “animal electricity”—a clue to the relationship between living tissue and electricity—using a frog whose leg muscle would twitch when touched with a charged metal knife. This led to the first understanding of how nerves conduct electrical impulses causing muscles to contract.

On 1 February 2000, the Maldives Islands issued a stamp as part of a sheet of 17 commemorating the millennium and showing images of Galvani overlain by a frog, crediting both the scientist and the animal subject that proved so valuable to his findings.



Galvani & Frog
Maldives Islands Sc#2421q

Creation of the First Electric Storage Battery



Volta
Italy Sc#191

Another Italian, Alessandro Volta (1745-1827), expanded on the work of Galvani. Volta, with a background in chemistry and physics, used Galvani’s studies with frogs to show that the current of “animal electricity” that had Galvani described came from the action of chemicals in the frog’s leg muscle.

These findings led to the discovery of the principles of the battery that stores electrical energy. How many things do you own that use a battery? Think of your car, flashlight, wristwatch, iPhone, camera, or hundreds of other things where you live or work.

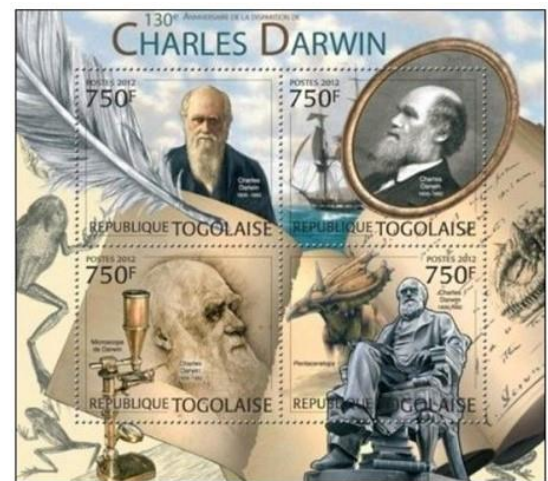
In 1927, Italy issued a set of four stamps (Sc#188–91) with denominations 20c, 50c, 60c, and 1.25 lira to commemorate the centenary of Volta’s death.

Formulation of Evolutionary Theory

Charles Darwin (1809-1882) abandoned intended careers first in the ministry, and then in medicine, to become one of the foremost English naturalists. During his five year voyage on the HMS *Beagle*, he studied geology, paleontology, and invertebrate and vertebrate biology.

He was able to document what he later called the process of “Natural Selection” that indicates that life forms gradually change in succeeding generations from common ancestors to support characteristics that enable life forms to succeed as the environment changes. This explanation is a universal tenet in modern sciences.

Many countries have issued stamps honoring Darwin and his contribution to modern scientific thought. On 11 October 2012, Togo issued a MS of four and SS of one to commemorate the 130th anniversary of Darwin’s death containing images of frogs.



Charles Darwin
Togo Mi#4523–26

Human Genome Project

In an effort to begin identifying areas of the human genetic material that may be altered to prevent disease or illnesses, an international team of researchers launched an effort to map all the genes on human chromosomes. The project was completed in 2003.

From the very beginning of DNA studies, frogs have been involved. On 10 May 2000, Palau issued four MS of five stamps and two SS of one for medical advances. One MS stamp shows the intimate relationship of frogs and the DNA double helix structure.



Human Genome Project
Palau Sc#560e

Cutaneous Breathing Aquatic Frog



Lake Titicaca Frog
Peru Sc#1516d

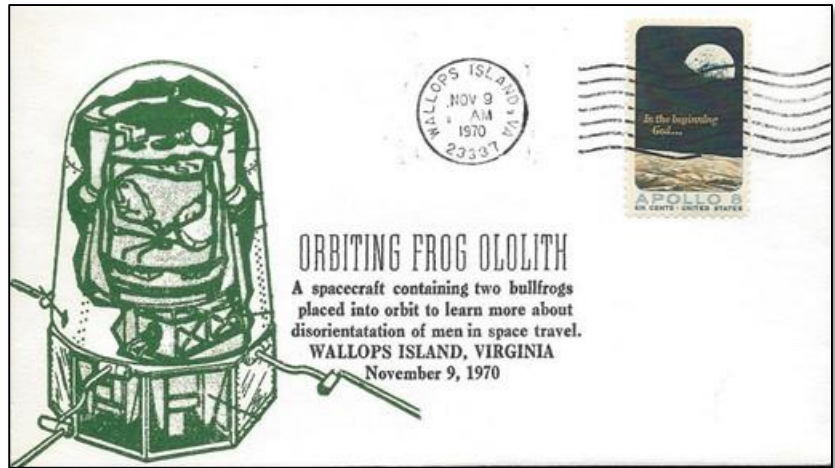
Jacques Cousteau (1910-1997) was a French underwater explorer, researcher, conservationist, and inventor of the Self-Contained Underwater Breathing Apparatus (SCUBA). In 1973 he explored Lake Titicaca, a mountain lake located between Peru and Bolivia in an unsuccessful search for Inca treasure.

What he did find instead was a colony of thousands of huge frogs with skin so loose and baggy that their size was even exaggerated. With very tiny lungs, the frogs depend on cutaneous respiration, using the extended folds of skin as a secondary respiratory tissue.

On 2 May 2006, Peru issued a block of four stamps with label to commemorate the fauna of Lake Titicaca. One stamp shows the famous Lake Titicaca Frog (*Telmatoibius culeus*).

Frogs in Space

In 1970, at the dawning of extended space exploration, there was a need to understand how the granules (called otoliths) in the inner ears of vertebrates upon which our orientation on earth depends, are affected by the weightless environment of space. This was an important consideration for NASA scientists because of planned extended space flights.



Two large bullfrogs were sent aloft in a rocket and their responses to weightlessness and acceleration were studied via implanted electrodes. Findings from this project contributed to the California-based Vestibular Research Facility that assists in preparing astronauts for future flights without becoming disoriented. A cacheted first-day cover illustrating the experimental design is shown above.

20th Century Advances in Science and Medicine

Frogs have been so important in basic medical research that almost ten percent of all Nobel Prizes in Medicine and Physiology have utilized frogs. Most recently at this writing, the 2012 award by the Nobel Prize committee selected two investigators “for the discovery that mature cells (of frogs) can be reprogrammed to become pluripotent.”

This research is a step toward discovering the nature of stem cells. In recognition of the great advances made in basic science and medicine, Palau issued a MS of five stamps on this subject.



Advances in Science & Medicine
Palau Sc#560

TRAVELING INTO THE WORLD OF BUTTERFLIES AND MOTHS: PART IV

Vladimir Kachan, Belarus

[Ed. Note: This article is the last in a four-part series on the study and science of Lepidoptera by Vladimir Kachan from Belarus. Readers can contact the author via email at: vladimirkachan@mail.ru, or post at: P.O. Box-36, BY-220089, Minsk-89, Republic of Belarus.]

4. Significance of Butterflies and Moths in Nature

USEFUL BUTTERFLIES AND MOTHS

A great quantity of butterflies are either neutral or useful and they must be protected. Butterflies play an important role in raising the productivity of agricultural plants, fruit plantations, meadows, and pastures, by being their pollinators. Every plant species has its own pollinator that is adapted to the biology of their flowering.

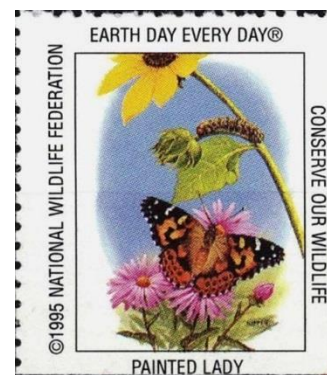


Cactoblastis cactorum
Ascension Island Sc#692

Most active pollinators are the butterflies of family Papilionidae. Some species of butterflies and moths whose caterpillars feed exclusively on weeds, are used as a biological control agent.

The use of the Cactus Moth (*Cactoblastis cactorum*) is widely known. Its caterpillars live on *Opuntia* cacti. In Australia, for eradicating the cacti, the moth was honored with a monument.

Other cases of weed eradication involve the mass reproduction of the Painted Lady butterfly (*Vanessa cardui*). There are butterflies that consume coca plants, the leaves of which are used to prepare narcotics.



Vanessa cardui
NWF label

From prehistoric times, man has been producing beautiful textiles made of natural silk from chrysalises of the Silkworm Moth caterpillars (*Bombyx mori*). At first silk was only produced in China. According to legend, the empress Leizu “discovered” silk four thousand years ago. She had tea in the garden, and a cocoon of a silkworm fell in her cup by chance. Trying to take it away by silk thread, she got the first thread, having unwound the chrysalis.



Bombyx mori
Brazil Sc#1669
larva with cocoon

Silk fiber, from which chrysalises are composed, is the main material for silk producing in textile industry. One gets from 300 to 1000 meters of silk thread, sometimes even up to 4000 meters.

From the chrysalis of the Chinese Tussah Moth (*Antheraea pernyi*) they get light golden tussah silk, an excellent hard-wearing fabric. The textile industry uses chrysalises of the Ailanthus Silkmoth (*Samia cynthia*) as well.

The caterpillars and chrysalises of some species of moths are used in cookery by many peoples, especially those of Africa, South America, and Australia.

Recently silkworm caterpillars been used by biology technology specialists in Japan for industrial production of interferon—a preparation against viruses.

The unique wing designs of some butterflies are used by artists to create new fabric designs. The wings of some tropical butterflies are used in jeweler’s art.



Samia cynthia
N. Korea, 1965 issue
preliminary artwork

HARMFUL BUTTERFLIES AND MOTHS



Tineidae
FSAT, 1972 Sc#51

There are a considerable number of pests of agriculture plants and forests among butterflies and moths. The moths of family Tineidae damage clothing and agricultural crops. Moths of the Pyralidae family do harm in food storehouses by enmeshing food in a net of fiber.

The caterpillars of the Pieridae butterfly family (*Pieris rapae* and *Pieris brassicae*) destroy garden plants. The caterpillars of the Magpie Moth (*Abraxas grossulariata*) of Geometridae family damage the buds, leaves, and flowers of apple, pear, cherry, and quince trees.

Lackey Moths (*Malacosoma neustria*) are a pest of fruit gardens, especially of apple-trees and also of oak groves. The caterpillars of this moth damage the leaves all fruit species, making large web nests.



Pieris brassicae
Switzerland Sc#B261



Smerinthus ocellatus
Hungary, 1969 Sc#1967

The caterpillars of the Eyed Hawk-Moth (*Smerinthus ocellatus*) damage apple-trees, eating around the leaves in fruit arbors and young gardens. The caterpillars of the Giant Peacock Moth (*Saturnia pyri*) damage the leaves of plum, cherry, apricot, pear, apple, and walnut-trees.

The caterpillars of the Large Tortoiseshell butterfly (*Nymphalis polychloros*) eat the leaves of pear, cherry, and elm trees. The Black-veined White butterfly (*Aporia*

crataegi) does great harm to gardens and forests. Its caterpillars damage the leaves of fruit trees.

The caterpillars of Garden Tiger Moth (*Arctia caja*), Cream-spot Tiger Moth (*Arctia villica*), Small Emperor Moth (*Saturnia pavonia*), and the Silver-washed Fritillary butterfly (*Argynnis paphia*) feed on the leaves of raspberries, strawberries, and other garden plants.



Arctia caja
Ireland, 1994 Sc#931



Aporia crataegi
Romania postal card, 1956

The Nun Moth (*Lymantria monacha*) is a pest of pine forests. Its caterpillars feed on needles. The Gypsy Moth (*Lymantria dispar*) is one of the most widespread pests of forests and fruit gardens. It can be found almost all over the world. The caterpillars of that moth do harm to more than 300 different species of plants.



Lymantria dispar
Romania, 1964 Sc#1619

The caterpillars of the moth families Cossidae and Tortricidae live in the roots, branches, and trunks of leaf-bearing trees, where they make long passages, resulting in killing the trees.



Cossidae
Mongolia, 1974 Sc#756



Tortricidae
Norfolk Island, 1989 Sc#451



Hepialidae
Faroe Islands, 1993 Sc#257

The caterpillars of the moth family Hepialidae harm the trunks and roots of trees and cultivated grass plants. The caterpillars of the Mourning Cloak butterfly (*Nymphalis antiopa*) are dangerous for poplar, birch, willow, and aspen.

PROTECTION OF BUTTERFLIES

Under the conditions of industrial and technological development, the biosphere gets polluted. The dynamic balance between nature and human society becomes disturbed. Biological conditions for existence of the wide and varied animal world are getting worse, and among those affected are many different butterflies. The reduction of habitat and the quantity of butterflies occurs because of building and road construction, the felling of trees, grubbing out and ploughing up of forests, and draining marshes.

That is why the main way to save butterflies is regional protection of their habitation, which can include nature reserves of a common profile and a specialized network of small protected territories. Microreserves serve not only to protect species from disappearance, but help increase the number of insect pollinators.



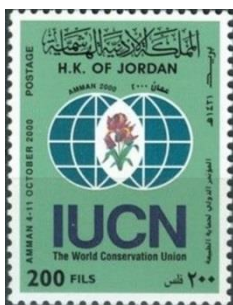
Daisetsuzan National Park
Japan 1940 Sc#304

For example, rare butterflies are protected in Daisetsuzan National Park in Japan, Gunung Mulu National Park in Malaysia, Iguaçu National Park in Brazil, Mercantour National Park in France, Abuko National Park in Gambia, and Kedrovaya Pad Nature Reserve in Russia.

Among international organizations considering the problems of nature protection, the International Union for Conservation of Nature Resources (IUCN), formed in October 1948,

plays a leading role. Nowadays IUCN unites governmental and social organizations of 160 countries. Its main duty became the protection of nature and the natural riches of the globe.

The practical activity of IUCN is aimed at carrying out nature protection programs as a source of scientific and cultural riches and as a necessary basis for further economic and social development of mankind. The supreme organ of IUCN is the General Assembly consisting of delegates from the member states. It considers the proposals of a broad nature protection scheme, on which resolutions are adopted. General Assemblies are held periodically in different countries of the world. The IUCN fulfills its mission through six permanent commissions.



IUCN promotion
Jordan Sc#1712



Erebia aethiopella
Mercantour National Park
Monaco 1984 Sc#1428

The Species Survival Commission, whose members are well-known scientists from almost every country, in the early 1960s concluded that it was necessary to issue a "Red Data List." This Red List includes information about all rare, disappearing, and threatened species. Red is the color of a danger. The first volume of the Red List was published in 1963.

As the study of the wild world became more profound, the number of species included in Red List had to be increased, and to our disappointment there are not many examples of removing species from Red List as a result of human care. IUCN published the last new volume of Red Data List in 2012. It lists rare and disappearing species of butterflies and moths from all over the world.

In 1961, in the Swiss city of Morges, the World Wildlife Fund (WWF) was formed. WWF has its sections in 30 countries. It is a voluntary fund raising organization whose main tasks are financing of nature protection measures developed by IUCN and promoting publicity to persuade governments to take measures on saving of nature riches.

In due course, they began to form regional Red Books in many countries. Red Books or Red Lists, including state and regional lists, dealing with butterfly protection are in Australia, New Zealand, Papua New Guinea, Japan, Canada, USA, India, Austria, Belgium, Bulgaria, Great Britain, Hungary, Spain, Luxemburg, Poland, Finland, France, Germany, Czech Republic, Slovakia, Switzerland, Russia, and Belarus.



Butterfly species on the Red List
Burundi, 2012 Sc#1125



Ornithoptera alexandrae
Papua, 1988 Sc#698
with WWF panda logo

One of the most important links of butterfly conservation must be an active and wide popularization of entomological knowledge, promoting a new attitude of the population towards insects, and appreciation of their beauty. The variety and coloration of wings compare butterflies to the most beautiful creatures on Earth.

A wide variety of philatelic materials allow creation of topical philatelic exhibits. On the basis of this information, in 1990, the author created a philatelic exhibit, "World of Butterflies and Moths," awarded a Large Vermeil medal at the World Philatelic Exhibition PORTUGAL-2010 and PHILANIPPON-2011.

I hope this article will help popularize entomological knowledge. I can always help in creation of a butterfly or insect philatelic exhibit. (I have many duplicates in this theme.) Please contact me either by e-mail or post at the addresses listed above.



BOTANY

Editor

Christopher E. Dahle, BU1269

New Listings



Scott#	Denom	Common Name/Scientific Name	Family/Subfamily	Code
ANDORRA (Spanish) 2014 September 15 (Int. Year Family Farming)				
403	92c	Seedling		V B U
ARMENIA 2014 September 23 (Flora & Fauna)				
1010	230d	<i>Dianthus gabrielianae</i>	Caryophyllaceae	Fl A
ARUBA 2014 September 26 (Fruit)				
442a	175c	Watermelon, <i>Citrullus lanatus</i>	Cucurbitaceae	Fr A MS
442b	175c	Papaya, <i>Carica papaya</i>	Caricaceae	Fr A MS
442c	175c	Mango, <i>Mangifera indica</i>	Anacardiaceae	Fr A MS
442d	175c	Soursop, <i>Annona muricata</i>	Annonaceae	Fr A MS
442e	175c	Banana, <i>Musa x paradisiaca</i>	Musaceae	Fr A MS
442f	175c	Cantaloupe, <i>Cucumis melo</i>	Cucurbitaceae	Fr A MS
442g	175c	Cashew, <i>Anacardium orientale</i>	Anacardiaceae	Fr A MS
442h	175c	Pomegranate, <i>Punica granatum</i>	Punicaceae	Fr A MS
BULGARIA 2014 October 25 (Flora & Fauna of Kupena Nature Reserve)				
4696d	1L	Pine cone, <i>Pinus</i> sp.	Pinaceae	Fr A SS Z
CHINA (Taiwan) 2014 November 14 (Flowers in Vases)				
4202	\$5	Peonies, <i>Paeonia officinalis</i>	Paeoniaceae	Fl A
4203	\$5	Lotuses, <i>Nelumbo nucifera</i>	Nelumbonaceae	Fl A
4204	\$10	Chrysanthemums, <i>Chrysanthemum</i> sp.	Asteraceae	Fl A
4205	\$25	Camellias, <i>Camellia japonica</i>	Theaceae	Fl A
CUBA 2014 March 20 (Alejandro Robaina Pereda, Tobacco Grower)				
5491	10c	Tobacco seedling, <i>Nicotiana tabacum</i>	Solanaceae	V B
5492	15c	Growers in field, <i>Nicotiana tabacum</i>	Solanaceae	V B
5493	30c	Tobacco leaves and cigar equipment, <i>Nicotiana tabacum</i>	Solanaceae	V B
2014 April 14 (Diplomatic Relations with Antigua Barbuda, 20th anniv.)				
5501	65c	Royal Palm, <i>Roystonea regia</i>	Arecaceae	T A
		Whitewood, <i>Bucida buceras</i>	Bignoniaceae	T A
CZECH REPUBLIC 2014 September 3 (Flora & Fauna of the Beskid Mountains)				
3613		February Daphne, <i>Daphne mezereum</i>	Thymelaeaceae	Fl B MS Z
		European Silver Fir, <i>Abies alba</i>	Pinaceae	T B MS Z
		Snowdrop, <i>Galanthus nivalis</i>	Amaryllidaceae	Fl B MS Z
		<i>Corydalis cava</i>	Papaveraceae	Fl B MS Z
		<i>Crocus heuffelianus</i>	Iridaceae	Fl B MS Z
DOMINICAN REPUBLIC 2014 May 21 (World Museum Day)				
1553a	50p	Bridge in Japanese Garden		V B U
1553b	50p	Path in Japanese Garden		V B U

DOMINICAN REPUBLIC (cont) 2014 August 27 (Flowers)

1559a	20p	<i>Salcedoa mirabaliarum</i>	Asteraceae	Fl A
1559b	20p	<i>Ekmanianthe longiflora</i>	Bignoniaceae	Fl A
1559c	20p	Guanito del Lago, <i>Coccothrinax jimenezii</i>	Arecaceae	T A
1559d	20p	<i>Rhytidophyllum daisy anum</i>	Gesneriaceae	Fl A

FRANCE 2014 November 6 (Sale of Cornflowers by WWI Veterans, 80th anniv.)

4726	€1.10	Cornflower, <i>Centaurea cyanus</i>	Asteraceae	Fl A S
------	-------	-------------------------------------	------------	--------

FRENCH POLYNESIA 2014 November 6 (Tiaré Flower)

1135	2fr	Tiaré, <i>Gardenia taitensis</i>	Rubiaceae	Fl A
------	-----	----------------------------------	-----------	------

GAMBIA 2014 May 12 (National Flower of South Korea)

3575	30d	Rose of Sharon, <i>Hibiscus syriacus</i>	Malvaceae	Fl A
------	-----	--	-----------	------

2014 September 5 (National Parks of Africa)

3604b	45d	Kiang West, Gambia; Wetland vegetation		V B U MS
3606b	75d	Serengeti, Tanzania; Acacia, <i>Acacia tortilis</i>	Fabaceae	T A SS

GHANA 2014 March 19 (Flowers of Africa)

2778a	3.50ce	Yellow Disa, <i>Disa chrysostachya</i>	Orchidaceae	Fl A MS
2778b	3.50ce	Blue Disa, <i>Disa graminifolia</i>	Orchidaceae	Fl A MS
2778c	3.50ce	Flame Lily, <i>Gloriosa superba</i>	Colchicaceae	Fl A MS
2778d	3.50ce	Sugarbush Protea, <i>Protea caffra</i>	Proteaceae	Fl A MS
2778e	3.50ce	Drip Disa, <i>Disa longicornu</i>	Orchidaceae	Fl A MS
2778f	3.50ce	Drip Disa, <i>Disa longicornu</i>	Orchidaceae	Fl A MS
2778g	3.50ce	Soprano Lilac African Spoon Daisy, <i>Osteospermum</i>	Asteraceae	Fl A MS
2779a	4ce	Wood Iris, <i>Dietes bicolor</i>	Iridaceae	Fl A MS
2779b	4ce	Red Disa, <i>Disa uniflora</i>	Orchidaceae	Fl A MS
2779c	4ce	Common Sugarbush, <i>Protea repens</i>	Proteaceae	Fl A MS
2779d	4ce	Aloe, <i>Aloe arborescens</i>	Xanthorrhoeaceae	Fl A MS
2779e	4ce	Ice Plant	Aizoaceae	Fl A MS

2014 March 19 (Orchids of Africa)

2780a	4ce	Butterfly Orchid, <i>Psychopsis papilio</i>	Orchidaceae	Fl A MS
2780b	4ce	Butterfly Orchid, <i>Psychopsis papilio</i>	Orchidaceae	Fl A MS
2780c	4ce	Butterfly Orchid, <i>Psychopsis papilio</i>	Orchidaceae	Fl A MS
2780d	4ce	Butterfly Orchid, <i>Psychopsis papilio</i>	Orchidaceae	Fl A MS
2781a	4ce	<i>Phalaenopsis</i>	Orchidaceae	Fl A MS
2781b	4ce	<i>Cymbidium</i>	Orchidaceae	Fl A MS
2781c	4ce	Early-Purple Orchid, <i>Orchis mascula</i>	Orchidaceae	Fl A MS
2781d	4ce	Disa Riette, <i>Disa Riette</i>	Orchidaceae	Fl A MS
2782	12ce	<i>Phalaenopsis</i>	Orchidaceae	Fl A MS
2783	12ce	Butterfly Orchid, <i>Psychopsis papilio</i>	Orchidaceae	Fl A SS

2014 March 19 (Paintings by Qi Baishi)

2800b	2.75ce	"Loquats in a Basket," <i>Eriobotrya japonica</i>	Rosaceae	Fr A MS
2801a	2.75ce	"Pomegranates," <i>Punica granatum</i>	Punicaceae	Fr A MS
2801b	2.75ce	"Mynahs and Amaranthus," <i>Amaranthus</i> sp.	Chenopodiaceae	Fl A MS
2801c	2.75ce	"Begonias and Rock," <i>Begonia</i> sp.	Begoniaceae	Fl A MS
2802a	4.50ce	"Lotus and Mandarin Ducks," <i>Nelumbo nucifera</i>	Nelumbonaceae	Fl A MS
2802b	4.50ce	"Magpie and Plum Blossoms," <i>Prunus</i> sp.	Rosaceae	Fl A MS

GIBRALTAR 2015 February 8 (World War I Centenary)

1498–1503		Small poppies on each stamp, <i>Papaver rhoeas</i>	Papaveraceae	Fl B
-----------	--	--	--------------	------

GREAT BRITAIN (Guernsey)		2014 November 11 (World War I Centenary)	
1275-80	Small poppies on all stamps, <i>Papaver rhoeas</i>	Papaveraceae	Fl B
GREAT BRITAIN (Isle of Man)		2015 January 2 (World War I Centenary Type of 2014)	
1698-1703	Small poppies on all stamps, <i>Papaver rhoeas</i>	Papaveraceae	Fl B
GRENADA GRENADINES		2014 October 24 (Orchids of the Caribbean)	
2906a	\$3.25 <i>Cattleya mossiae</i>	Orchidaceae	Fl A MS
2906b	\$3.25 <i>Cattleya mossiae</i>	Orchidaceae	Fl A MS
2906c	\$3.25 <i>Cattleya mossiae</i>	Orchidaceae	Fl A MS
2906d	\$3.25 <i>Cattleya mossiae</i>	Orchidaceae	Fl A MS
2907a	\$3.25 <i>Cattleya mossiae</i>	Orchidaceae	Fl A MS
2907b	\$3.25 <i>Cattleya mossiae</i>	Orchidaceae	Fl A MS
2907c	\$3.25 <i>Cattleya mossiae</i>	Orchidaceae	Fl A MS
2907d	\$3.25 <i>Cattleya mossiae</i>	Orchidaceae	Fl A MS
2908	\$5 <i>Cattleya mossiae</i>	Orchidaceae	Fl A SS
2909	\$5 <i>Cattleya mossiae</i>	Orchidaceae	Fl A SS
2014 November 3 (Fruits & Vegetables)			
2912a	\$3.25 European Pears, <i>Pyrus communis</i>	Rosaceae	Fl A MS
2912b	\$3.25 Peaches, <i>Prunus persica</i>	Rosaceae	Fl A MS
2912c	\$3.25 Bananas, <i>Musa x paradisiaca</i>	Musaceae	Fl A MS
2912d	\$3.25 Apricot, <i>Prunus armeniaca</i>	Rosaceae	Fl A MS
2912e	\$3.25 Apples, <i>Malus domestica</i>	Rosaceae	Fl A MS
2913a	\$3.25 Eggplant, <i>Solanum melongena</i>	Solanaceae	Fl A MS
2913b	\$3.25 Garlic, <i>Allium sativum</i>	Amaryllidaceae	Fl A MS
2913c	\$3.25 Bell Pepper, <i>Capsicum annuum</i>	Solanaceae	Fl A MS
2913d	\$3.25 Avocado, <i>Persea americana</i>	Lauraceae	Fl A MS
2913e	\$3.25 Tomato, <i>Solanum lycopersicum</i>	Solanaceae	Fl A MS
2914	\$10 Strawberries, <i>Fragaria ananassa</i>	Rosaceae	Fl A SS
2915	\$10 Mango, <i>Mangifera indica</i>	Anacardiaceae	Fl A SS
GUYANA		2014 May 12 (Garden Flowers of South Korea)	
4319a	\$200 Rhododendron, <i>Rhododendron ponticum</i>	Ericaceae	Fl A MS
4319b	\$200 Tawny Daylily, <i>Hemerocallis fulva</i>	Xanthorrhoeaceae	Fl A MS
4319c	\$200 Hydrangea, <i>Hydrangea macrophylla</i>	Hydrangeaceae	Fl A MS
4319d	\$200 Camellia, <i>Camellia japonica</i>	Theaceae	Fl A MS
4319e	\$200 Magnolia, <i>Magnolia liliiflora</i>	Magnoliaceae	Fl A MS
4319f	\$200 Daylily, <i>Hemerocallis x hybrida</i>	Xanthorrhoeaceae	Fl A MS
4320	\$800 Lily-of-the-Valley, <i>Convallaria majalis</i>	Asparagaceae	Fl A SS
2014 September 4 (Mei Lanfang birth 125th anniv.)			
4357a	\$200 Ptg: Birds and flowers		Fl B U
4357b	\$200 Ptg: Tree branch with buds and flowers, <i>Prunus mume</i>	Rosaceae	Fl A
4357d	\$200 Ptg: Flowers in vase		Fl A U
4357e	\$200 Ptg: Leaves and flowers in vase		Fl V B U
2014 September 15 (Paintings by Zang Daqian)			
4359b	\$200 Peony, <i>Paeonia</i> sp.	Paeoniaceae	Fl A MS
4359c	\$200 Lotus, <i>Nelumbo nucifera</i>	Nelumbonaceae	Fl A MS
INDONESIA		2014 November 5 (Flora & Fauna)	
2395b	3000r <i>Tacca leontopetaloides</i>	Dioscoreaceae	V A

IRAN		2013 March 5 (Arbor Day)		
3084	3000r	U/I Tree		T B U
		2013 March 25 (Global Celebration of Nowruz [New Year])		
3086	15000r	U/I flowers		FI B S SS Z
IRELAND		2014 July 21 (Rose type of 2014) (die cut 13¼×13)		
2039	68c	Rose, <i>Rosa x hybrida</i>	Rosaceae	FI A
ISRAEL		2014 April 8 (50th anniv. Maleh Yehuda Regional Council)		
2009	3.10s	Grapes, <i>Vitis vinifera</i>	Vitaceae	Fr A
		2014 June 5 (Friendship between Israel and Thailand, 60th anniv.)		
2020	3.10s	Pomegranates, <i>Punica granatum</i>	Punicaceae	Fr A
		Mangosteens, <i>Garcinia x mangostana</i>	Clusiaceae	Fr A
		2014 December 16 (Friendship between Israel and Ecuador)		
2038	5s	<i>Ophrys fuciflora</i>	Orchidaceae	FI A
		<i>Dracula simia</i>	Orchidaceae	FI A
		2015 February 10 (Winter Flowers)		
2051	1.80s	<i>Anthemis leucanthemifolia</i>	Asteraceae	FI A
2052	2.10s	Alkanet or Dyers' Bugloss, <i>Alkanna tinctoria</i>	Boraginaceae	FI A
2053	2.70s	Poppy Anemone, <i>Anemone coronaria</i>	Ranunculaceae	FI A
JAPAN		2014 January 16 (Greetings – Spring)		
3644e	50¥	Roses, <i>Rosa x hybrida</i>	Rosaceae	FI A
3645a	80¥	Cherry blossoms, <i>Prunus serrulata</i>	Rosaceae	FI A
3645c	80¥	Roses, <i>Rosa x hybrida</i>	Rosaceae	FI A
3645d	80¥	Tulips, <i>Tulipa x hybrida</i>	Liliaceae	FI B
3645e	80¥	Daisies, <i>Leucanthemum vulgare</i>	Asteraceae	FI B
		2014 February 16 (Diplomatic Relations with Switzerland 150th anniv.)		
3646b	80¥	Cherry blossoms, <i>Prunus serrulata</i>	Rosaceae	FI B MS
3646e	80¥	Vineyard, <i>Vitis vinifera</i>	Vitaceae	FI B MS
3646h	80¥	Narcissus, <i>Narcissus pseudonarcissus</i>	Amaryllidaceae	FI B MS
		2014 March 3 (Definitives)		
3648	52¥	Cherry blossoms, <i>Prunus serrulata</i>	Rosaceae	FI A
3649	82¥	Plum blossoms, <i>Prunus mume</i>	Rosaceae	FI A
3650	92¥	Violets, <i>Viola</i> sp.	Violaceae	FI A
3651	205¥	Cedar Tree, <i>Cryptomeria japonica</i>	Cupressaceae	T A
3653	310¥	Stylized flowers, Rishiri Island		FI S
3654	52¥	Condolence flowers		FI S
		2014 April 3 (Hospitality Flowers)		
3661	52¥	Daisy, <i>Argyranthemum frutescens</i>	Asteraceae	FI A
		Sweet Pea, <i>Lathyrus odoratus</i>	Fabaceae	FI A
3662	52¥	Lily, <i>Lilium auratum</i>	Liliaceae	FI A
3663	52¥	Cherry blossoms, <i>Prunus serrulata</i>	Rosaceae	FI A
3664	52¥	Water Lily, <i>Nymphaea</i> sp.	Nymphaeaceae	FI A
3665	82¥	Poppies, <i>Papaver rhoeas</i>	Papaveraceae	FI A
		Ranunculus, <i>Ranunculus</i> sp.	Ranunculaceae	FI A
3666	82¥	Peony, <i>Paeonia lactiflora</i>	Paeoniaceae	FI A
3667	82¥	Roses, <i>Rosa</i> sp.	Rosaceae	FI A
3668	82¥	Magnolias, <i>Magnolia</i> sp.	Magnoliaceae	FI A

JAPAN (continued)**2014 May 14** (Yamagata Local Autonomy)

3678a	82¥	Cherries, <i>Prunus avium</i>	Rosaceae	Fr B MS
3678c	82¥	Cherry blossoms, <i>Prunus serrulata</i>	Rosaceae	Fl A MS

2014 May 10 (National Afforestation)

3686a	52¥	Didier's Tulip, <i>Tulipa gesneriana</i>	Liliaceae	Fl A MS
3686b	52¥	Willow-leafed Magnolia, <i>Magnolia salicifolia</i>	Magnoliaceae	Fl A MS
3686c	52¥	Japanese Bigleaf Magnolia, <i>Magnolia obovata</i>	Magnoliaceae	Fl A MS
3686d	52¥	Katakuri, <i>Erythronium japonicum</i>	Liliaceae	Fl A MS
3686e	52¥	Japanese Beech, <i>Fagus crenata</i>	Fagaceae	V A MS
3686f	52¥	Snow Camellia, <i>Camellia rusticana</i>	Theaceae	Fl A MS
3686g	52¥	Maple leaves, <i>Acer mono</i>	Sapindaceae	Fl A MS
3686h	52¥	<i>Primula farinosa</i> ssp. <i>modesta</i>	Ranunculaceae	Fl A MS
3686i	52¥	Paperwhite, <i>Narcissus tazetta</i>	Amaryllidaceae	Fl A MS
3686j	52¥	Azalea, <i>Rhododendron</i> sp.	Ericaceae	Fl A MS

2014 June 4 (Fruits & Vegetables)

3692a	52¥	Cherries, <i>Prunus avium</i>	Rosaceae	Fr A
3692b	53¥	Bell Peppers, <i>Capsicum annuum</i>	Solanaceae	Fr A
3692c	54¥	Japanese Plums, <i>Prunus salicina</i>	Rosaceae	Fr A
3692d	55¥	Corn, <i>Zea mays</i>	Poaceae	Fr A
3692e	56¥	Watermelon, <i>Citrullus lanatus</i>	Cucurbitaceae	Fr A
3693a	82¥	Tomato, <i>Solanum lycopersicum</i>	Solanaceae	Fr A
3693b	82¥	Japanese Apricots, <i>Prunus mume</i>	Rosaceae	Fr A
3693c	82¥	Eggplants, <i>Solanum melongena</i>	Solanaceae	Fr A
3693d	82¥	Cucumbers, <i>Cucumis sativus</i>	Cucurbitaceae	Fr A
3693e	82¥	Peach, <i>Prunus persica</i>	Rosaceae	Fr A

2014 June 10 (Mie Local Autonomy)

3694b	82¥	Japanese Iris, <i>Iris ensata</i>	Iridaceae	Fl A MS
-------	-----	-----------------------------------	-----------	---------

2014 June 26 (Mount Fuji World Heritage Site)

3697c	82¥	Framed by cherry blossoms, <i>Prunus serrulata</i>	Rosaceae	Fl B MS
3697d	82¥	with farm fields		V B U MS
3697e	82¥	with autumn leaves		V B U MS
3697i	82¥	with forest and waterfall		T B U MS

2014 July 23 (Letter Writing Day)

3704	52¥	Iris, <i>Iris laevigata</i>	Iridaceae	Fl A
3706	52¥	Stylized flowers		Fl S
3708	52¥	Birds in Plum tree, <i>Prunus mume</i>	Rosaceae	Fl B
3709	52¥	Raspberries, <i>Rubus</i> sp.	Rosaceae	Fr A
3710	52¥	Morning Glories, <i>Ipomoea nil</i>	Convolvulaceae	Fl A
3711	52¥	Gourds, <i>Trichosanthes pilosa</i>	Cucurbitaceae	Fr A
3713	52¥	Cherry blossoms and water wheels, <i>Prunus serrulata</i>	Rosaceae	Fl B
3715	82¥	Poppies, <i>Papaver rhoeas</i>	Papaveraceae	Fl A
3716	82¥	Grapevines, <i>Ampelopsis</i> sp.	Vitaceae	Fr V A
3717	82¥	Stylized flowers		Fl S
3718	82¥	Rape blossoms, <i>Brassica napus</i>	Brassicaceae	Fl A
3719	82¥	Loquats, <i>Eriobotrya japonica</i>	Rosaceae	Fr A
3720	82¥	Morning Glory and fan, <i>Ipomoea nil</i>	Convolvulaceae	Fl B
3721	82¥	Leaves with Acorns and Chestnuts,		Fr V A
3722	82¥	Pine trees, <i>Pinus</i> sp.	Pinaceae	T S
3723	82¥	Cherry blossoms, <i>Prunus serrulata</i>	Rosaceae	Fl S

JAPAN (continued)**2014 September 10** (Kagawa Local Autonomy)

3732e 82¥ Olives, *Olea europaea* Lauraceae Fr A MS

2014 September 12 (60th National Sports Festival)

3734b 82¥ Hydrangea, *Hydrangea macrophylla* Hydrangeaceae Fl A MS
 3734d 82¥ Rhododendron, *Rhododendron japonoheptamerum* Ericaceae Fl A MS
 3734f 82¥ Lily, *Lilium speciosum* Liliaceae Fl A MS
 3734h 82¥ Rhododendron, *Rhododendron kiusianum* Ericaceae Fl A MS
 3734j 82¥ Camellias, *Camellia japonica* Theaceae Fl A MS

2014 November 6 (Hospitality Flowers)

3765 52¥ Narcissus, *Narcissus tazetta* Amaryllidaceae Fl A
 3766 52¥ Plum blossoms, *Prunus mume* Rosaceae Fl A
 3767 52¥ *Adonis ramosa* Ranunculaceae Fl A
 3768 52¥ Cyclamen, *Cyclamen persicum* Primulaceae Fl A
 3769 82¥ Hoary Stock, *Matthiola incana* Brassicaceae Fl A
 3770 82¥ Camellia, *Camellia japonica* Theaceae Fl A
 3771 82¥ Ornamental Cabbage, *Brassica oleracea* Brassicaceae V A
 3772 82¥ Poinsettia, *Euphorbia pulcherrima* Euphorbiaceae Fl A

2014 November 26 (Ishikawa Local Autonomy)

3776b 82¥ Terraced rice fields, *Oryza sativa* Poaceae V A MS
 3776e 82¥ Fritillaria, *Fritillaria camtschaticensis* Liliaceae Fl A MS

2015 January 16 (Greetings – Spring 2015)

3785a 82¥ Cherry blossoms, *Prunus serrulata* Rosaceae Fl A
 3785b 82¥ Roses, *Rosa* sp. Rosaceae Fl A
 3785c 82¥ Pansies, *Viola x wittrockiana* Violaceae Fl A
 3785d 82¥ Carnations and girl, *Dianthus caryophyllus* Caryophyllaceae Fl A
 3785e 82¥ Stylized Daisies Fl S

2015 February 2 (Definitives)

3792 100¥ Japanese Primrose, *Primula sieboldii* Primulaceae Fl A
 3793 120¥ Japanese Wisteria, *Wisteria floribunda* Fabaceae Fl A
 3794 140¥ *Kerria japonica* Rosaceae Fl A

2015 February 23 (Fruits & Vegetables)

3800a 52¥ Cabbage, *Brassica oleracea* Brassicaceae V A
 3800b 52¥ Satsuma Orange, Tangerine, *Citrus reticulata* Rutaceae Fr A
 3800c 52¥ Peas, *Pisum sativum* Fabaceae Fr A
 3800d 52¥ Mango, *Mangifera indica* Anacardiaceae Fr A
 3800e 52¥ Onion, *Allium cepa* Amaryllidaceae V A
 3801a 82¥ Oranges, *Citrus sinensis* Rutaceae Fr A
 3801b 82¥ Asparagus, *Asparagus officinalis* Asparagaceae V A
 3801c 82¥ Strawberries, *Fragaria ananassa* Rosaceae Fr A
 3801d 82¥ Lettuce, *Lactuca sativa* Asteraceae V A
 3801e 82¥ Pineapple, *Ananas comosus* Bromeliaceae Fr A

JORDAN**2014 February 9** (Nature Reserves)

2166 20pi U/I flower Fl A U

KOREA (North)**2013 June 12** (Bees & Orchids)

5182–84 U/I Orchids Orchidaceae Fl B U

KOREA (North) (continued)		2013 September 25 (Scenic Views in Season)		
5206	30w	Mangyongdae in Spring		Fl B U
5207	50w	Ruinga Island in Summer		T A U
5208	70w	Moran Hill in Autumn		T A U
5209	110w	Ryongwan Pavilion in Winter		T A U
KOSOVO		2014 June 12 (Flowers)		
255	80c	Incorrectly inscribed "Liliaceae," <i>Hippeastrum hybrid</i>	Amaryllidaceae	Fl A
256	90c	<i>Gladiolus illyricus</i>	Iridaceae	Fl A
257	€1	<i>Tulipa kosovarica</i>	Liliaceae	Fl A
KYRGYZSTAN		2014 May 31 (Medicinal Plants)		
460	20s	Coltsfoot, <i>Tussilago farfara</i>	Asteraceae	Fl A
461	23s	<i>Ferula foetida</i>	Apiaceae	Fl A
462	35s	<i>Ziziphora clinopodioides</i>	Lamiaceae	Fl A
463	40s	<i>Helichrysum macarandicum</i>	Asteraceae	Fl A
LIBERIA		2014 January 2 (Yosemite National Park)		
2904c	\$70	Giant sequoia trees, <i>Sequoiadendron giganteum</i>	Cupressaceae	T A MS
		2014 June 23 (Orchids of Africa)		
2958a	\$100	<i>Disa racemosa</i>	Orchidaceae	Fl A MS
2958b	\$100	<i>Eulophia hians</i> var. <i>nutans</i> (= <i>E. nutans</i>)	Orchidaceae	Fl A MS
2958c	\$100	<i>Eulophia hians</i>	Orchidaceae	Fl A MS
2958d	\$100	<i>Eulophia ensata</i>	Orchidaceae	Fl A MS
2959a	\$100	<i>Satyrium erectum</i>	Orchidaceae	Fl A MS
2959b	\$100	<i>Satyrium coriifolium</i>	Orchidaceae	Fl A MS
2959c	\$100	<i>Eulophia angolensis</i> (= <i>buchananii</i>)	Orchidaceae	Fl A MS
2959d	\$100	<i>Disa uniflora</i> (= <i>grandiflora</i>)	Orchidaceae	Fl A MS
2960a	\$175	<i>Bonatea speciosa</i> (= <i>Habenaria bonatea</i>)	Orchidaceae	Fl A SS
2960b	\$175	<i>Polystachya pubescens</i>	Orchidaceae	Fl A SS
2961a	\$175	<i>Eulophia foliosa</i> (= <i>reichenbachiana</i>)	Orchidaceae	Fl A SS
2961b	\$175	<i>Disa uniflora</i>	Orchidaceae	Fl A SS
LIBYA		2014 February 24 (Vegetables)		
1786a	500d	Garlic, <i>Allium sativa</i>	Amaryllidaceae	V A MS
1786b	500d	Onions, <i>Allium cepa</i>	Amaryllidaceae	V A MS
1786c	500d	Tomatoes, <i>Solanum lycopersicum</i>	Solanaceae	Fr A MS
1786d	500d	Peppers, <i>Capsicum annuum</i>	Solanaceae	Fr A MS
1786e	500d	Eggplants, <i>Solanum melongena</i>	Solanaceae	Fr A MS
1786f	500d	Potatoes, <i>Solanum tuberosum</i>	Solanaceae	V A MS
LUXEMBOURG		2015 March 3 (Apples & Pears)		
1401a	(60c)	Triumph aus Luxemburg Apple, <i>Malus</i> Triumph aus Luxemburg	Rosaceae	Fr A MS
1401b	(60c)	Gute Graue Pears, <i>Pyrus</i> Gute Graue	Rosaceae	Fr A MS
1401c	(60c)	Luxemburger Renette Apples, <i>Malus</i> Luxemburger Renette	Rosaceae	Fr A MS
1401d	(60c)	Doppelte Philippsbirne Pears, <i>Pyrus</i> Doppelte Philippsbirne	Rosaceae	Fr A MS
1401e	(60c)	Jakob Lebel Apples, <i>Malus</i> Jakob Lebel	Rosaceae	Fr A MS
1401f	(60c)	Neue Poiteau Pears, <i>Pyrus</i> Neue Poiteau	Rosaceae	Fr A MS
1401g	(60c)	Porzenapfel Apples, <i>Malus</i> Porzeapfel	Rosaceae	Fr A MS
1401h	(60c)	Saint Remy Pears, <i>Pyrus</i> Saint Remy	Rosaceae	Fr A MS
1401i	(60c)	Eifeler Rambur Apples, <i>Malus</i> Eifeler Rambur	Rosaceae	Fr A MS
1401j	(60c)	Luxemburger Mostbirne Pears, <i>Pyrus</i> Luxemburger Mostbirne	Rosaceae	Fr A MS

MALAYSIA**2014 February 14 (Roses)**

1490	60c	<i>Rosa x hybrida</i>	Rosaceae	Fl A
1491	70c	<i>Rosa x hybrida</i>	Rosaceae	Fl A
1492	\$1.20	<i>Rosa x hybrida</i>	Rosaceae	Fl A
1493	\$5	<i>Rosa x hybrida</i>	Rosaceae	Fl A

2014 July 17 (Fruit)

1505	60c	Jackfruit, <i>Artocarpus heterophyllus</i>	Moraceae	Fr A
1506	80c	Durian, <i>Durio zibethinus</i>	Malvaceae	Fr A
1507	\$1.20	Melon, <i>Cucumis melo</i>	Cucurbitaceae	Fr A
1508	\$1.40	Carambola or Starfruit, <i>Averrhoa carambola</i>	Oxalidaceae	Fr A

MARSHALL ISLANDS**2015 February 14 (Berries)**

1104a	(49c)	Blueberries, <i>Vaccinium corymbosum</i>	Ericaceae	Fr A
1104b	(49c)	Raspberries, <i>Rubus idaeus</i>	Rosaceae	Fr A
1104c	(49c)	Blackberries, Raspberries, Strawberries, & Blueberries		Fr A
1104d	(49c)	Strawberries, <i>Fragaria ananassa</i>	Rosaceae	Fr A
1104e	(49c)	Blackberries, <i>Rubus</i> sp.	Rosaceae	Fr A

MICRONESIA**2014 July 9 (Fruit)**

1091a	75c	Strawberries, <i>Fragaria ananassa</i>	Rosaceae	Fr A MS
1091b	75c	Limes, <i>Citrus aurantifolia</i>	Rutaceae	Fr A MS
1091c	75c	Pears, <i>Pyrus communis</i>	Rosaceae	Fr A MS
1091d	75c	Red Currants, <i>Ribes rubrum</i>	Grossulariaceae	Fr A MS
1091e	75c	Blueberries, <i>Vaccinium corymbosum</i>	Ericaceae	Fr A MS
1091f	75c	Tomatoes, <i>Solanum lycopersicum</i>	Solanaceae	Fr A MS
1091g	75c	Grapes, <i>Vitis vinifera</i>	Vitaceae	Fr A MS
1091h	75c	Oranges, <i>Citrus sinensis</i>	Rutaceae	Fr A MS
1091i	75c	Guavas, <i>Psidium guajava</i>	Myrtaceae	Fr A MS

2014 September 15 (Paintings by Qi Baishi)

1103a	\$1.20	Flowers on branch		Fl B U MS
1103b	\$1.20	Flowers and cricket		Fl B U MS
1103c	\$1.20	Basket of fruit		Fl B U MS
1103d	\$1.20	Mushrooms and flowers		Fl B U MS
1104a	\$1.20	Flowers and beetle		Fl B U MS
1104b	\$1.20	Flowers and dragonfly		Fl B U MS
1104c	\$1.20	Flowers and dragonfly		Fl B U MS
1104d	\$1.20	Flowers and grasshopper		Fl B U MS
1105	\$4	Flowers, <i>Wisteria</i> ?	Fabaceae	Fl A SS

MONACO**2015 January 21**

2785	68c	Neptune Grass, <i>Posidonia oceanica</i>	Posidoniaceae	Fr V A
------	-----	--	---------------	--------

2015 February 5 (Intl Flower Arrangement Festival)

2790	€1.45	Flower arrangement		Fl A U
------	-------	--------------------	--	--------

MONTENEGRO**2014 May 23 (Crna Poda Forest)**

364	95c	Trees, <i>Pinus</i> sp.	Pinaceae	T A
-----	-----	-------------------------	----------	-----

MONTserrat**2014 June 24 (Vegetables)**

1345a	\$3	Lettuce, <i>Lactuca sativa</i>	Asteraceae	V A MS
1345b	\$3	Corn, <i>Zea mays</i>	Poaceae	Fr A MS
1345c	\$3	Eggplants, <i>Solanum melongena</i>	Solanaceae	Fr A MS
1345d	\$3	Sweet Potatoes, <i>Ipomoea batatas</i>	Convolvulaceae	V A MS

MONTSERRAT (continued)

1346a	\$3.50	Cauliflower, <i>Brassica oleracea</i>	Brassicaceae	Fl A MS
1346b	\$3.50	Carrots, <i>Daucus carota</i>	Apiaceae	V A MS

2014 August 6 (Paintings)

1347a	\$3.50	“Still Life Vase with Twelve Sunflowers,” <i>Helianthus annuus</i>	Asteraceae	Fl A MS
-------	--------	--	------------	---------

POLAND**2014 July 18**

4126	5z	Apple, <i>Malus domestica</i>	Rosaceae	Fr A
------	----	-------------------------------	----------	------

UNITED STATES**2015 February 14** (Vintage Flowers)

4959	(49c)	Rose, <i>Rosa</i> sp.	Rosaceae	Fl A
4960	70 c	Tulip, <i>Tulipa x hybrida</i>	Liliaceae	Fl A

2015 March 20 (Water Lilies)

4964	(49c)	<i>Nymphaea pubescens</i>	Nymphaeaceae	Fl A
4965	(49c)	<i>Nymphaea rubra</i>	Nymphaeaceae	Fl A
4966	(49c)	<i>Nymphaea caerulea</i>	Nymphaeaceae	Fl A
4967	(49c)	<i>Nymphaea alba</i>	Nymphaeaceae	Fl A

NEW COMMERCIAL PLANT

The Territorial Seed Company of Cottage Grove, Oregon, introduced a plant in 2014 that sprouts both tomatoes and potatoes. They aptly named it the “Ketchup ‘n’ Fries” plant.

Grafting (rather than genetic modification) splices the tomato onto the potato plant to create individual plants capable of harvests of 500 red cherry tomatoes and 4.5 pounds of potatoes each.

The grafted combination was a tremendous success when first introduced to home gardeners in the United Kingdom last year.

Tomatoes are members of the potato family and are therefore naturally compatible with potatoes. Each Ketchup ‘n’ Fries plant is hand-grafted to create this unique double cropping novelty.





FUNGI

Editor

Paul A. Mistretta, BU1681



New Listings

Scott#	Denom	Common Name/Scientific Name	Family	Code
ESTONIA 2014 September 11 (Mushroom)				
768	55c	Deadly Fibrecap (others), <i>Inocybe erubescens</i> ☠	Inocybaceae	A
JAPAN 2014 June 23 (Sanrio Cartoon Characters) (2ea MS of 10)				
3695g	52¥	Mushroom (cartoon) at base of tree (My Melody on swing)		S
3696g	82¥	Mushroom (cartoon) by mailbox (My Melody at mailbox)		S
LIBERIA 2014 April 2 (Mystical Creatures) (MS of 4 different)				
Listed in Linn's Stamp News as "leprechaun," but also as "mushroom" in its "By Topic" listing.				
2917b	\$100	Fly Agaric, <i>Amanita muscaria</i> ☠	Amanitaceae	B
MACEDONIA 2013 October 16 (Mushrooms) (Horiz strip 4)				
639a	10d	Satan's Bolete (others), <i>Boletus satanas</i> ☠	Boletaceae	A*
639b	20d	Salt-shaker Earthstar or Pepperpot, <i>Myriostoma coliforme</i>	Geastraceae	A*
639c	50d	Spring Orange Peel Fungus (others), <i>Caloscypha fulgens</i>	Caloscyphaceae	A*
639d	100d	Cobalt Crust or Velvet Blue Spread, <i>Terana caerulea</i>	Phanerochaetaceae	A*
MICRONESIA 2014 September 15 (Paintings by Qi Baishi) (MS of 4)				
1103d	\$1.20	Stylized in painting "Mushrooms and Flowers"		S
POLAND 2014 August 29 (Mushrooms) (MS of 4+4 labels)				
4132a	1.75z	Pixie Stool or Chanterelle, <i>Cantharellus cibarius</i>	Cantharellaceae	A*
	label	False Chanterelle; <i>Hygrophoropsis aurantiaca</i>	Hygrophoropsidaceae	A*
4132b	2.35z	Field Mushroom, or Pink Bottom, <i>Agaricus campestris</i>	Agaricaceae	A*
	label	Destroying Angel; <i>Amanita virosa</i> ☠	Amanitaceae	A*
4132c	3.75z	Edible Russula or Bare-toothed Russula, <i>Russula vesca</i>	Russulaceae	A*
	label	Sickener, <i>Russula emetica</i> ☠	Russulaceae	A*
4132d	4.20z	Penny Bun or Edible Bolete, <i>Boletus edulis</i>	Boletaceae	A*
	label	Bitter Bolete; <i>Tylopilus felleus</i>	Boletaceae	A*



MAMMALIA

Editor

Michael Prince, LM68



New Listings

Scott#	Denom	Common Name/Scientific Name	Family/Subfamily	Code
BOTSWANA 2011 December 18 (Wild Dogs) (Set of 4)				
926	2.60p	African Wild Dog, <i>Lycaon pictus</i>	Canidae	A*
927	4.10p	African Wild Dog, <i>Lycaon pictus</i>	Canidae	A*
928	5.50p	African Wild Dog, <i>Lycaon pictus</i>	Canidae	A*
929	6.10p	African Wild Dog, <i>Lycaon pictus</i>	Canidae	A*
BULGARIA 2014 October 25 (Tourist Attractions South Central Bulgaria) (MS of 4)				
4696d	1L	Alpine Chamois, <i>Rupicapra rupicapra</i>	Bovidae	A*
COSTA RICA 2014 August 22 (Endangered Cats Corcovado National Park) (SS of 2)				
662a	690C	Jaguarundi, <i>Puma yagouaroundi</i>	Felidae	A*
662b	1220C	Jaguar, <i>Panthera onca</i>	Felidae	A*
662	Margin	LL: Ocelot, <i>Leopardus pardalis</i>	Felidae	Z*
CZECH REPUBLIC 2014 September 3 (Flora & Fauna of the Beskid Mountains) (MS of 4)				
3613a	13k	Eurasian Badger, <i>Meles meles</i>	Mustelidae	A*
3613b	17k	Wild Cat, <i>Felis silvestris</i>	Felidae	A*
3613c	21k	Brown Bear, <i>Ursus arctos</i>	Ursidae	A*
3613d	25k	Grey Wolf, <i>Canis lupus</i>	Canidae	A*
	Label	Eurasian Lynx, <i>Lynx lynx</i>	Felidae	Z*
DENMARK 2015 January 2 (Wadden Sea National Park) (SS of 3 & Bklt pane 10)				
1705c	10k	Harbor Seal, <i>Phoca vitulina</i>	Phocidae	
1708	10k	Harbor Seal, <i>Phoca vitulina</i>	Phocidae	
GHANA 2014 March 19 (African Elephants) (2ea pairs & 2ea SS of 2)				
2784a	4ce	African Bush Elephant, <i>Loxodonta africana</i> (w/o tusks)	Elephantidae	A
2784b	4ce	African Bush Elephant, <i>Loxodonta africana</i> (with tusks)	Elephantidae	A
2785a	4ce	African Bush Elephant, <i>Loxodonta africana</i> (w/o tusks)	Elephantidae	A
2785b	4ce	African Bush Elephant, <i>Loxodonta africana</i> (with tusks)	Elephantidae	A
2786a	6ce	African Bush Elephant, <i>Loxodonta africana</i> (trunk raised)	Elephantidae	A
2786b	6ce	African Bush Elephant, <i>Loxodonta africana</i> (trunk dangling)	Elephantidae	A
2787a	6ce	African Bush Elephant, <i>Loxodonta africana</i> (w/o tusks)	Elephantidae	A
2787b	6ce	African Bush Elephant, <i>Loxodonta africana</i> (with tusks)	Elephantidae	A
2014 September 15 (Endangered Animals Africa) (2ea MS of 4/SS of 2)				
2808a	2.75ce	Addax, <i>Addax nasomaculatus</i>	Bovidae	A*
2808b	2.75ce	Bonobo, <i>Pan paniscus</i>	Hominidae	A*
2808d	2.75ce	Giraffe, <i>Giraffa camelopardalis</i>	Giraffidae	A*
2809a	2.75ce	Dorcas Gazelle, <i>Gazella dorcas</i>	Bovidae	A*
2809b	2.75ce	Eastern Gorilla, <i>Gorilla beringei</i>	Hominidae	A*
2809d	2.75ce	White Rhinoceros, <i>Ceratotherium simum</i>	Rhinocerotidae	A*
2810a	4.50ce	Mountain Zebra, <i>Equus zebra</i>	Equidae	A*
2810b	4.50ce	Verreaux's Sifaka, <i>Propithecus verreauxi</i>	Indriidae	A*
2811a	4.50ce	Cheetah, <i>Acinonyx jubatus</i>	Felidae	A*
2811b	4.50ce	African Forest Elephant, <i>Loxodonta cyclotis</i>	Elephantidae	A*

GREENLAND		2014 October 20 (Polar Bear & Map of Greenland)		
679	21.50k	Polar Bear, <i>Ursus maritimus</i>	Ursidae	A*
GUYANA		2014 April 2 (WWF) (2ea block of 4)		
4315a	\$180	Red-faced Spider Monkey, <i>Ateles paniscus</i> (sitting on branch)	Cebidae	A*
4315b	\$180	Red-faced Spider Monkey, <i>Ateles paniscus</i> (with young)	Cebidae	A*
4315c	\$180	Red-faced Spider Monkey, <i>Ateles paniscus</i> (climbing tree)	Cebidae	A*
4315d	\$180	Red-faced Spider Monkey, <i>Ateles paniscus</i> (eating)	Cebidae	A*
4316a	\$200	Red-faced Spider Monkey, <i>Ateles paniscus</i> (sitting on branch)	Cebidae	A*
4316b	\$200	Red-faced Spider Monkey, <i>Ateles paniscus</i> (with young)	Cebidae	A*
4316c	\$200	Red-faced Spider Monkey, <i>Ateles paniscus</i> (climbing tree)	Cebidae	A*
4316d	\$200	Red-faced Spider Monkey, <i>Ateles paniscus</i> (eating)	Cebidae	A*
		2014 July 1 (Wildlife) (Set of 20)		
4321	\$80	South American Tapir, <i>Tapirus terrestris</i>	Tapiridae	A*
4322	\$80	Common Squirrel Monkey, <i>Saimiri sciureus</i>	Sciuridae	A*
4323	\$80	Hoffman's Two-toed Sloth, <i>Choloepus hoffmanni</i>	Megalonychidae	A*
4324	\$80	Giant Anteater, <i>Myrmecophaga tridactyla</i>	Myrmecophagidae	A*
4325	\$80	Giant Otter, <i>Pteronura brasiliensis</i>	Mustelidae	A*
4326	\$80	Jaguar, <i>Panthera onca</i>	Felidae	A*
INDONESIA		2014 May 2 (WWF) (MS of 4)		
2385a	5000r	Leopard, <i>Panthera pardus</i> (head, denom UR)	Felidae	A*
2385b	5000r	Leopard, <i>Panthera pardus</i> (head, denom UL)	Felidae	A*
2385c	5000r	Leopard, <i>Panthera pardus</i> (entire animal, denom UR)	Felidae	A*
2385d	5000r	Leopard, <i>Panthera pardus</i> (entire animal, denom UL)	Felidae	A*
		2014 October 5 (Armed Forces) (Strip of 3)		
2394c	3000r	Leopard, <i>Panthera pardus</i> (and Leopard Tank)	Felidae	B
JAPAN		2014 March 3 (Definitives) (Set of 7)		
3647	2¥	Mountain Hare, <i>Lepus timidus</i>	Leporidae	A*
		2014 May 15 (Rare Wildlife in Japan) (Set of 5)		
3679	82¥	Amami Rabbit, <i>Pentalagus furnessi</i>	Leporidae	A*
		2014 September 19 (Heartwarming Animal Scenes) (2ea MS of 5)		
3735b	52¥	Spotted Seal, <i>Phoca largha</i>	Phocidae	A*
3735c	52¥	Malayan Tapir, <i>Tapirus indicus</i>	Tapiridae	A*
3735d	52¥	Giraffe, <i>Giraffa camelopardalis</i>	Giraffidae	A*
3735e	52¥	Sumatran Orangutan, <i>Pongo abelii</i>	Hominidae	A*
3736a	82¥	Koala, <i>Phascolarctos cinereus</i>	Phascolarctidae	A*
3736b	82¥	Giant Panda, <i>Ailuropoda melanoleuca</i>	Ursidae	A*
3736c	82¥	Capybara, <i>Hydrochaeris hydrochaeris</i>	Hydrochaeridae	A*
3736d	82¥	Lion, <i>Panthera leo</i>	Felidae	A*
3736e	82¥	Fennec Fox, <i>Vulpes zerda</i>	Canidae	A*
SOUTH SUDAN		2012 July 9 (Fauna & Coat of Arms) (Set of 6)		
6	£10	Nile Lechwe, <i>Kobus megaceros</i>	Bovidae	A*
7	£20	White-eared Kob, <i>Kobus kob</i>	Bovidae	A*



ORNITHOLOGY

Editor

Glenn G. Mertz, BU1455

Updates/Corrections



BANGLADESH – Vol. 62(1), p.18

Correction: Sc#800: Correct the spelling of the species name to *ichthyaetus*.

BAHAMAS – Vol. 61(4), pp.214–15

Correction: Sc#1355a should be Sc#1355, as this number applies to the stamp with white frames around the stamp.

BELARUS – Vol. 63(1), p.25

Correction: Sc#867 should be listed as Steller's Sea-Eagle, *Haliaeetus pelagicus*.

CUBA – Vol. 62(1), p.22

Correction: Sc#5235: The correct family listing for Resplendent Quetzal is Trogonidae, not Pelecanidae

GRENADA (Carriacou) – Vol. 63(2), p.105

Correction: Correct Sc#2646c to Sc#2846c.

ITALY – Vol. 63(3), p.182

Correction: Sc#3219 should be Sc#3219a and is in family of Phasianidae.

MARSHALL ISLANDS – Vol. 61(4), p.218

Correction: Correct Sc#1034j English name to Australasian Magpie

MOZAMBIQUE – Vol. 62(3), p.186

Correction: Sc#2662c incorrectly listed as Rupornis Hawk. Correct to Roadside Hawk, and genus of *Rupornis* not *Buteo*, as this was a recent genus name change.

MOZAMBIQUE – Vol. 62(1), pp.29–30

Correction: Sc#2604d, Sc#2604e, Sc#2604f, Sc#2605d, Sc#2605e, Sc#2605f, Sc#2606d, Sc#2606e, and Sc#2606f, should be values of 66m, not 16m.

NEW ZEALAND – Vol. 64(1), p.34

Correction: Sc#2546a & Sc#2546 should be genus of *Chroicocephalus*. It was incorrectly listed as *Chroicephalus*.

ST. THOMAS – Vol. 61(2), p.97

Update: Sc#1698a was listed as an unidentified species at time of write-up. While recently mounting my stamp issues into my albums (two-year backlog), I asked Chuck Braun, "New Birds in the Philatelic Aviary" author, to review this bird and see if he could identify it. Two stamps in this issue had the genus name of *Couroucon* used and the one was identified as a Collared Trogon, *Trogon collaris*, so I figured if Sc#1698a also had the name of *Couroucon*, it must be also be in the *Trogon* genus.

Chuck Braun replied that it could be a female White-tailed Trogon, *Trogon virides*, and Kjell Scharning came back with a probability of it being a Black-throated Trogon, *Trogon rufus*. Kjell made a note that it is based on a lithograph by Jean Theodore Descouritz, but Kjell finds it difficult to reconcile the colors in the stamp/lithograph with any trogon species in field guides. Because this species cannot be positively identified by either Chuck or Kjell, Sc#1698a will remain as unidentified.

SURINAM – Vol. 62(1), p.32

Correction: Sc#1422h correct denomination should be \$4.75.

SURINAM – Vol. 63(3), p.187

Correction: Sc#1461e species spelling should be *brachyura*, not *brachyuran*.

UNITED STATES – Vol. 63(3), p.188**Correction:** Genus spelling for Sc#4891 should be *Zonotrichia*.**New Issues**

Scott#	Denom	Common Name/Scientific Name	Family/Subfamily	Code
ARGENTINA		2014 March 25		C*
A SS with two stamps (Sc#2724a–b) for the 25th Reunion of Latin American Antarctic Program Administrators, Buenos Aires, with one stamp featuring a bird.				
2724b	\$6.00	Chinstrap Penguin, <i>Pygoscelis Antarctica</i>	Spheniscidae	
BRITISH ANTARCTIC TERR.		2014 November 19		A*
A set of five stamps for letter rate, inscribed “Airmail Letter,” and five self-adhesive coil stamps inscribed for “Airmail Postcard” rates, all showing penguins.				
C23	(75p)	Macaroni Penguin, <i>Eudyptes chrysolophus</i>	Spheniscidae	
C24	(75p)	Adelie Penguin, <i>Pygoscelis adeliae</i>	Spheniscidae	
C25	(75p)	Chinstrap Penguin, <i>Pygoscelis antarcticus</i>	Spheniscidae	
C26	(75p)	Gentoo Penguin, <i>Pygoscelis papua</i>	Spheniscidae	
C27	(75p)	Emperor Penguin, <i>Aptenodytes forsteri</i>	Spheniscidae	
C28	(65p)	Macaroni Penguin, <i>Eudyptes chrysolophus</i>	Spheniscidae	
C29	(65p)	Adelie Penguin, <i>Pygoscelis adeliae</i>	Spheniscidae	
C30	(65p)	Chinstrap Penguin, <i>Pygoscelis antarcticus</i>	Spheniscidae	
C31	(65p)	Gentoo Penguin, <i>Pygoscelis papua</i>	Spheniscidae	
C32	(65p)	Emperor Penguin, <i>Aptenodytes forsteri</i>	Spheniscidae	
C32a		Horiz strip of 5 (Sc#C28–32)		
		2014 November 19		A*
A set of four stamps (Sc#481–84) for Antarctic Marine Food Web, with one stamp featuring two bird species. A MS of nine se-tenant stamps (Sc#485a–i) was also issued, all 65p values, but this sheet has arrows showing the various fauna food relationship among the subjects on the nine stamps.				
483	£1	Emperor Penguin, <i>Aptenodytes forsteri</i>	Spheniscidae	
		Antarctic Tern, <i>Sterna vittata</i> (stamp shows no arrows)	Laridae	
485a	65p	Same birds as Sc#483, but this nine-stamp sheet has the arrows		
BULGARIA		2014 October 25		A*
A set of four se-tenant stamps of Song Birds and a SS of the four. Designer: Stefan Gruev. Offset.				
4692	30s	Bohemian Waxwing, <i>Bombycilla garrulus</i>	Bombycillidae	
4693	50s	Rufous-tailed Scrub-Robin, <i>Cercotrichas galactotes</i> (Cap. <i>Erythropygia</i>)	Muscicapidae	
4694	1.00	Black Lark, <i>Melanocorypha yeltoniensis</i>	Alaudidae	
4695	1.50	Icterine Warbler, <i>Hippolais icterina</i>	Acrocephalidae	
CHINA (People’s Republic)		2012 August 8		C*
A sheet of six stamps (Sc#4043a–f) of Chinese Song Poetry, with two stamps featuring birds.				
4043a	80f	Barn Swallow, <i>Hirundo rustica</i>	Hirundinidae	
4043c	\$1.20	Eurasian Magpie, <i>Pica pica</i>	Corvidae	
		2013 May 19		C*
A set of five stamps (Sc#4108–13) for Tourism/Beautiful China, with two stamps depicting birds as part of the design. Designers: Ma Lihang and Jiang Weijie. Gravure by Beijing Stamp Printing House.				
4110	\$1.20	Masked Booby, <i>Sula dactylatra</i>	Sulidae	
4111	\$1.20	Red-crowned Crane, <i>Grus japonensis</i>	Gruidae	

COCOS ISLANDS **2013 June 4** **A***

A set of five stamps (Sc#367–71) for 50th Anniversary of Cocos Islands Postage stamps, with one stamp featuring a bird.

371 \$2.00 Pacific Reef-Heron, *Egretta sacra* Ardeidae

COOK ISLAND **2013 May 31** **A***

A set of six horizontal format stamps (Sc#1453–58) with one stamp featuring birds.

1458 \$1.50 Whooping Crane, *Grus americana* Gruidae

CUBA **2013 March 12** **A***

A set of six stamp (Sc#5376–81) and a SS of pets, with two stamps featuring birds.

5376 5c Rock Pigeon, *Columba livia* Columbidae

5378 15c Cuban Parrot, *Amazona leucocephala* Psittacidae

2013 July 17 **A***

A set of six stamps and an imperf SS of birds issued for the World Philatelic Exhibition in Bangkok, Thailand.

5419 10c Siamese Fireback, *Lophura diardi* Phasianidae

5420 35c Gray Peacock-Pheasant, *Polyplectron bicalcaratum* Phasianidae

5421 40c Red-crowned Crane, *Grus japonensis* Gruidae

5422 50c Eurasian Magpie, *Pica pica* Corvidae

5423 65c Green Pheasant, *Phasianus versicolor* Phasianidae

5424 75c Saker Falcon, *Falco cherrug* Falconidae

5425 SS 1p Indian Peafowl, *Pavo cristatus* (imperf) Phasianidae

2014 July 1 **A***

A single stamp for the 40th Anniversary of Diplomatic Relations between Nigeria and Cuba.

5529 85c Cuban Trogon, *Priotelus temnurus* Trogonidae

Narina Trogon, *Apaloderma narina* Trogonidae

CZECH REPUBLIC **2013 September 4** **B***

A sheet of four stamps (Sc#3613a–d) and three labels for Flora and Fauna of the Beskid Mountains, with one stamp featuring a bird. Also, one label featuring two birds and two birds in the margins of the sheet.

3613d 25k Eurasian Nutcracker, *Nucifraga caryocatactes* Corvidae

label Eurasian Bullfinch, *Pyrrhula pyrrhula* Fringillidae

Ural Owl, *Strix uralensis* Strigidae

Margin Mid: Gray-faced Woodpecker, *Picus canus* Picidae

Top: White-backed Woodpecker, *Dendrocopos leucotos* Picidae

2014 November 5 **B***

Three stamps (Sc#3616–18) with one stamp of a painting by Salvador Dali (1904–1989), titled “Leda Atomica, 1949,” featuring a bird.

3618 37k Mute Swan, *Cygnus olor* Anatidae

DOMINICA **2011 June 1** **B***

A single stamp for National HIV and AIDS Response Program, with two parrots facing each other behind a heart for One Partner.

2761 90c Imperial Parrot, *Amazona imperialis* Psittacidae

FRANCE **2014 November 8** **A***

A single stamp of a bird for UNESCO.

2074 98c Hyacinth Macaw, *Anodorhynchus hyacinthinus* Psittacidae

GAMBIA **2014 September 15** **C***

A SS of two stamps (Sc#3606–07) for Parks of Africa, with one stamp featuring egrets around elephants.

3606 75d Cattle Egret, *Bubulcus ibis* Ardeidae

GERMANY **2014 February 6** **C***

A single stamp for the Lower Oder Valley Floodplain, features a bird in the lower left corner.

2770 60c White Stork, *Ciconia ciconia* Ciconiidae

GHANA **2014 September 15** **A***

Two sheets of four se-tenant stamps (Sc#2808a–d & 2809a–d) and two SS (Sc#2810–11) each with two stamps, but only the sheets of four have a stamp featuring a bird for Endangered Animals of Africa.

2808c \$2.75 Wattled Crane, *Grus carunculatus* Gruidae

2809c \$2.75 Jackass Penguin, *Spheniscus demersus* Spheniscidae

GRENADA **2014 November 3** **A***

Two sheets of four horizontal se-tenant stamps and two SS of two se-tenant stamps titled “Seagulls of the World.”

4011a \$3.25 Gray-hooded Gull, *Chroicocephalus cirrocephalus* Laridae

4011b \$3.25 Hartlaub’s Gull, *Chroicocephalus hartlaubii* Laridae

4011c \$3.25 Red-billed Gull, *Chroicocephalus scopulinus* Laridae

4011d \$3.25 Silver Gull, *Chroicocephalus novaehollandiae* Laridae

4012a \$3.25 Black-billed Gull, *Chroicocephalus bulleri* Laridae

4012b \$3.25 Andean Gull, *Chroicocephalus serranus* Laridae

4012c \$3.25 Brown-headed Gull, *Chroicocephalus brunnicephalus* Laridae

4012d \$3.25 Bonaparte’s Gull, *Chroicocephalus philadelphia* Laridae

4013a \$5.00 Black-headed Gull, *Chroicocephalus ridibundus* Laridae

4013b \$5.00 Slender-billed Gull, *Chroicocephalus genei* Laridae

4014a \$5.00 Brown-hooded Gull, *Chroicocephalus maculipennis* Laridae

4014b \$5.00 Andean Gull, *Chroicocephalus serranus* Laridae

GUINEA **2013 September 15** **A***

MS of three stamps of owls in a vertical se-tenant format.

a 15000fr Barred Owl, *Strix varia* Strigidae

b 20000fr Eurasian Eagle-Owl, *Bubo bubo* Strigidae

c 20000fr Snowy Owl, *Bubo scandiacus* Strigidae

SS 40000fr Greater Sooty Owl, *Tyto tenebricosa* Tytonidae

Margin UL: Oriental Bay Owl, *Phodilus badius* Tytonidae

UL: Greater Sooty Owl, *Tyto tenebricosa* Tytonidae

Top: Little Owl, *Athene noctua* Strigidae

UR: Eurasian Pygmy Owl, *Glaucidium passerinum* Strigidae

LL: Tawny Owl, *Strix aluco* Strigidae

LR: Rufous Owl, *Ninox rufa* Strigidae

GUYANA **2014 March 10** **A***

A sheet of four se-tenant stamps and a SS of two se-tenant stamps titled “Pink Flamingos.”

4303a \$200 Chilean Flamingo, *Phoenicopterus chilensis* (No legs visible) Phoenicopteridae

4303b \$200 Same bird (preening)

4303c \$200 Same bird (facing front)

4303d \$200 Same bird (facing right)

4304a \$400 Same bird (facing right)

4304b \$400 Same bird (facing left)

GUYANA (continued)**2014 July 1****A***

A sheet of 20 stamps (Sc#4321–40) for wildlife, with twelve stamps depicting birds.

4329	\$80	Red-billed Toucan, <i>Ramphastos tucanus</i>	Ramphastidae
4330	\$80	Yellow-crowned Parrot, <i>Amazona ochrocephala</i> (Cap. Amazon)	Psittacidae
4331	\$80	Purple Honeycreeper, <i>Cyanerpes caeruleus</i>	Thraupidae
4332	\$80	Scarlet Macaw, <i>Ara macao</i>	Psittacidae
4333	\$80	Guianan Cock-of-the-Rock, <i>Rupicola rupicola</i>	Cotingidae
4334	\$80	Scarlet Ibis, <i>Eudocimus ruber</i>	Threskiornithidae
4335	\$80	Black Curassow, <i>Crax alector</i>	Cracidae
4336	\$80	Harpy Eagle, <i>Harpia harpyja</i>	Accipitridae
4337	\$130	Purple Honeycreeper, <i>Cyanerpes caeruleus</i>	Thraupidae
4338	\$150	Red-billed Toucan, <i>Ramphastos tucanus</i>	Ramphastidae
4339	\$160	Scarlet Ibis, <i>Eudocimus ruber</i>	Threskiornithidae
4340	\$200	Black Curassow, <i>Crax alector</i>	Cracidae

2014 July 1**A***

A sheet of four se-tenant stamps (Sc#4345a–d) titled “Animals of South America,” with two stamps depicting birds, and two SS of one stamp.

4345a	\$300	Black Curassow, <i>Crax alector</i>	Cracidae
4345b	\$300	Gray-winged Trumpeter, <i>Psophia crepitans</i>	Psophiidae
4346	SS \$750	Yellow-crowned Parrot, <i>Amazona ochrocephala</i>	Psittacidae
4347	SS \$750	Toco Toucan, <i>Ramphastos toco</i>	Ramphastidae

INDONESIA**2014 June 5****A***

Two sheets of two stamps, one listed as a SS for World Environment Day, are titled “Environmental Care,” but only one stamp on each sheet features a bird. The design subjects are the same for each sheet.

2386a	3000r	Lesser Adjutant, <i>Leptoptilos javanicus</i>	Ciconiidae
2387a	5000r	Lesser Adjutant, <i>Leptoptilos javanicus</i>	Ciconiidae

2014 July 15**A***

A sheet of four se-tenant stamps of birds.

2388a	5000r	Milky Stork, <i>Mycteria cinerea</i>	Ciconiidae
2388b	5000r	Javan Plover, <i>Charadrius javanicus</i>	Charadriidae Vol. 63(3)
2388c	5000r	Blue-faced Rail, <i>Gymnocrex rosenbergii</i>	Rallidae Vol. 63(3)
2388d	5000r	White-shouldered Ibis, <i>Pseudibis davisoni</i>	Threskiornithidae

IRELAND**2014 July 21****A***

Two stamps for wildlife issued in s/a coil, but only one features a bird.

2040	68c	Black-legged Kittiwake, <i>Rissa tridactyla</i>	Laridae
------	-----	---	---------

JAPAN**2014 May 15****A***

A strip of five se-tenant stamps (Sc#3679–83) of Rare Wildlife in Japan, with one stamp featuring a bird.

3680	82¥	Rock Ptarmigan, <i>Lagopus muta</i>	Phasianidae
3683		Vert strip of 5 (Sc#3679–83)	

2014 June 26**C***

A sheet of ten se-tenant stamps (Sc#3697a–j) for Mount Fuji UNESCO World Heritage Site, with one stamp featuring a small bird on the tenth stamp in the lower right corner.

3697j	82¥	Mute Swan, <i>Cygnus olor</i>	Anatidae
-------	-----	-------------------------------	----------

JAPAN (continued) **2014 October 9** **B***
 Four stamps (Sc#3739–42) for International Letter Writing Week, with one stamp depicting a stylized bird species.

3739 70¥ Eurasian Tree Sparrow, *Passer montanus* Passeridae

JORDAN **2014 February 9** **A***
 Eight stamps of migratory birds imprinted with the date 2013.

2178 20pi Great White Pelican, *Pelecanus onocrotalus* Pelecanidae
 2179 20pi Gray Crowned-Crane, *Balearica regulorum* Gruidae
 2180 20pi Mallard, *Anas platyrhynchos* Anatidae
 2180 20pi Collared Flycatcher, *Ficedula albicollis* Muscicapidae
 2182 20pi Steppe Buzzard, *Buteo buteo vulpinus* Accipitridae
 (ssp. of Common Buzzard, *Buteo buteo*)
 2183 20pi Blackcap, *Sylvia atricapilla* Sylviidae
 2184 20pi European Bee-eater, *Merops apiaster* Meropidae
 2185 20pi Glossy Ibis, *Plegadis falcinellus* Threskiornithidae

KENYA **2012 June 22** **C***
 A set of three stamps (Sc#861–63) for Convention on International Trade in Endangered Species of Wild Fauna and Flora.

861 30sh Pink Cockatoo, *Lophochroa leadbeateri* Cacatuidae
 Great Hornbill, *Buceros bicornis* Bucerotidae

2013 December 13 **C***
 Four sheets of 25 se-tenant stamps (Sc#868a–y thru Sc#871a–y) each for 50th Anniversary of Independence, with one sheet (Sc#871) showing fauna containing four stamps with birds.

871e 110sh Yellow-billed Oxpecker, *Buphagus africanus* Buphagidae
 871q 110sh Lesser Flamingo, *Phoenicopterus minor* Phoenicopteridae
 871r 110sh Common Ostrich, *Struthio camelus* Struthionidae
 871t 110sh African Fish-Eagle, *Haliaeetus vocifer* Accipitridae

2013 December 20 **B***
 A SS for “50 Years of Diplomatic Relations Between Kenya and the P.R. of China,” with cranes in the background.

876 110sh Red-crowned Crane, *Grus japonensis* Gruidae

NEW CALEDONIA **2014 April 22** **C***
 A single stamp for North & East Zone UNESCO World Heritage Site.

1174 110fr Red-footed Booby, *Sula sula* Sulidae

2014 July **A***
 A single self-adhesive stamp type of 2009 of a Kagu. Also issued in a booklet pane of ten.

1076d (75fr) Kagu, *Rhynochetos jubatus* Rhynochetidae
 1076e Bklt pane 10 (Sc#1076d)

POLAND **2014 July 31** **A***
 A SS with a bee-eater stamp and the same bird in the margin of the SS.

4127 5.50z European Bee-eater, *Merops apiaster* Meropidae

NEW BIRDS IN THE PHILATELIC AVIARY

Charles E. Braun, BU1364

New Birds



BULWER'S PETREL, *Bulweria bulwerii* Procellariidae
Maldives, 2014 December 15, not yet cataloged, 70r

Length: 11 inches, sexes alike, disperses. Dark, with a pale bar on the upper wing.

Habitat: Breeds on barren offshore islands. Disperses to tropical and subtropical seas.

Range: Tropical and subtropical Atlantic, Pacific, and Indian Oceans

Reference: del Hoyo, J., A. Elliott, and J. Sargatal, Eds. *Handbook of the Birds of the World, Volume 1*.



ZIGZAG HERON, *Zebrilus undulatus* Ardeidae
St. Martin, 2015 January 14, not yet cataloged, 475c

Length: 11 to 13 inches, sexes alike, resident. Medium brown with dark barring.

Habitat: Wetlands in tropical evergreen forest.

Range: Eastern Colombia to central Brazil and northeastern Bolivia.

Reference: del Hoyo, J., A. Elliott, and J. Sargatal, Eds. *Handbook of the Birds of the World, Volume 1*.



SCALY-SIDED MERGANSER, *Mergus squamatus* Anatidae
South Korea, 2015 April 24, not yet cataloged, 2.50w.

Also on a joint issue Bolivia stamp. Previously on a Russian hunting stamp.

Length: 21 to 25 inches, migratory. The male (upper bird) has a blackish head, neck, and back, and white below with scaly sides and large white wing patches. The female (below) has a tan head, grayish back, and small wing patches.

Habitat: Breeds near fast-flowing water in forests. Winters in freshwater lakes and rivers.

Range: Breeds in southeastern Siberia, northeastern China, and Korea. Winters from coastal Siberia to China.

Reference: del Hoyo, J., A. Elliott, and J. Sargatal, Eds. *Handbook of the Birds of the World, Volume 1*.



DOUBLE-TOOTHED KITE, *Harpagus bidentatus* Accipitridae
Surinam, 2015 March 18, not yet cataloged, \$5.25

Length: 13 to 15 inches, sexes similar, resident. Blackish above and rufous below with a gray head and white throat.

Habitat: Tropical and subtropical forest and forest edges.

Range: Southern Mexico to eastern Bolivia and Brazil.

Reference: del Hoyo, J., A. Elliott, and J. Sargatal, Eds. *Handbook of the Birds of the World, Volume 2*.



PLUMBEOUS KITE, *Ictinia plumbea* Accipitridae
Surinam, 2015 March 18, not yet cataloged, \$7.25

Length: 14 to 15 inches, sexes alike, migratory. Blackish slate gray, pale gray head and below,

Habitat: Tropical and subtropical lowland forest and forest edges.

Range: Breeds from Mexico to Brazil. Winters from Colombia to northern Argentina.

Reference: del Hoyo, J., A. Elliott, and J. Sargatal, Eds. *Handbook of the Birds of the World, Volume 2.*



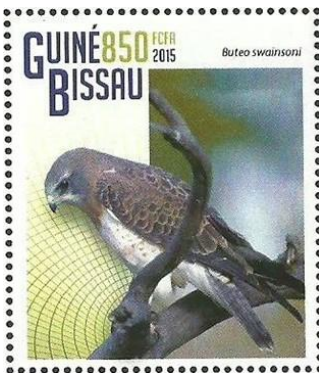
GREAT BLACK HAWK, *Buteogallus urubitinga* Accipitridae
Surinam, 2015 March 18, not yet cataloged, \$3.75

Length: 20 to 16 inches, sexes alike, resident. Black with white tail bands.

Habitat: Chaco, savanna, and forest.

Range: Mexico to northern Argentina.

Reference: del Hoyo, J., A. Elliott, and J. Sargatal, Eds. *Handbook of the Birds of the World, Volume 2.*



SWAINSON'S HAWK, *Buteo swainsoni* Accipitridae

Guinea-Bissau, 2015 January 15, 850fr. Previously in the margin of the U.S. Great Plains sheet.

Length: 19 to 22 inches, sexes alike, migratory. Brown with a white throat and a banded tail.

Habitat: Woodlands, prairies, and deserts.

Range: Breeds from Alaska to northern Mexico. Winters in southern Brazil and neighboring Argentina and Paraguay.

Reference: del Hoyo, J., A. Elliott, and J. Sargatal, Eds. *Handbook of the Birds of the World, Volume 2.*



RUFIOUS OWL *Ninox rufa* Strigidae

Solomon Islands, 2013 May 10, not yet cataloged, \$7

Length: 18 to 21 inches, sexes similar, resident. Dark rufous-brown above and finely barred white or rufous below with blackish facial discs.

Habitat: Forest, forest edges, mangroves, and wooded savanna.

Range: New Guinea and northern Australia.

Reference: del Hoyo, J., A. Elliott, and J. Sargatal, Eds. *Handbook of the Birds of the World, Volume 5.*



LESSER NIGHTHAWK, *Chordeiles acutipennis* Caprimulgidae
St. Martin, 2015 January 14, not yet cataloged, 200c.
Previously in the margin of a 2008 issue from Guatemala

Length: 8 to 9 inches, partially migratory. The male is speckled brownish with a white throat, wing patches, and outer-tail spots. The female (shown) lacks the tail spots.

Habitat: Open country and woodlands.

Range: Breeds from southwestern U.S. to northern Chile and Paraguay. U.S. birds winter in the tropics.

Reference: del Hoyo, J., A. Elliott, and J. Sargatal, Eds. *Handbook of the Birds of the World, Volume 5*.



COMMON POTOO, *Nyctibius griseus* Nyctibiidae
Surinam, 2015 March 18, not yet cataloged, \$6.25

Length: 13 to 15 inches, sexes alike, resident. Streaked brownish with a pale throat and banded tail.

Habitat: Open woodland.

Range: Costa Rica to Uruguay.

Reference: del Hoyo, J., A. Elliott, and J. Sargatal, Eds. *Handbook of the Birds of the World, Volume 5*.



SPECKLED HUMMINGBIRD, *Adelomyia melanogenys* Trochilidae
Guinea, 2015 March 20, not yet cataloged, 10000fr

Length: 3.5 inches, sexes alike, resident. Green above and speckled white or buff below with a black mask and a white stripe behind the eyes.

Habitat: Humid forest.

Range: Venezuela to northwestern Argentina.

Reference: del Hoyo, J., A. Elliott, and J. Sargatal, Eds. *Handbook of the Birds of the World, Volume 5*.



PURPLE-THROATED WOODSTAR, *Calliphlox mitchellii* Trochilidae
Niger, 2015 April 20, not yet cataloged, 825fr (LL)

Length: 2.6 to 3 inches, resident. The male (shown) is green with a purple throat and a white breast. The female is green with a white throat and breast and a rufous belly.

Habitat: Humid forest.

Range: Eastern Panama to western Ecuador.

Reference: del Hoyo, J., A. Elliott, and J. Sargatal, Eds. *Handbook of the Birds of the World, Volume 2*.



MOUNTAIN CARACARA, *Phalcoboenus megalopterus* Falconidae
Guinea, 2014 October 27, not yet cataloged, 15000fr

Length: 19 to 22 inches, sexes alike. Glossy black with a white belly and undertail.
Habitat: Treeless mountains.

Range: Northern Peru to central Chile.

Reference: del Hoyo, J., A. Elliott, and J. Sargatal, Eds. *Handbook of the Birds of the World, Volume 2*.



SLATY-BACKED FOREST-FALCON. *Micrastur mirandollei* Falconidae
Surinam, 2015 March 18, not yet cataloged, \$5.75

Length: 16 to 18 inches, sexes alike, resident. Slate-gray above and white below with a white collar and three tail bands.

Habitat: Lowland tropical rain forest.

Range: Costa Rica to Brazil.

Reference: del Hoyo, J., A. Elliott, and J. Sargatal, Eds. *Handbook of the Birds of the World, Volume 2*.



PALKACHUPA COTINGA, *Phibalura (flavirostris) boliviana* Cotingidae
Recent split from the Swallow-tailed Cotinga is not yet in Clements.
South Korea, 2015 April 24, not yet cataloged, 2.50w. Also on a joint issue Bolivia stamp.

Length: 9 inches, sexes similar, resident. Spotted olive and black above and pale yellow below with a yellow throat and scaly white neck.

Habitat: Forest borders and open areas with trees.

Range: Western Bolivia.

Reference: del Hoyo, J., A. Elliott, and J. Sargatal, Eds. *Handbook of the Birds of the World, Volume 9*.



SPLENDID ASTRAPIA, *Astrapia splendidissima* Paradisaeidae
United Nations (Vienna), 2015 April 16, not yet cataloged, 80c

Length: 15 to 16 inches, resident. The male (right) is dark above and lime-green below with a long dark-tipped white tail. The female (left) is drab blackish brown with a finely barred dusky brown and buff breast and belly and a dark tail with a white base.

Habitat: Montane forests and forest edges.

Range: West-central New Guinea.

Reference: del Hoyo, J., A. Elliott, and J. Sargatal, Eds. *Handbook of the Birds of the World, Volume 14*.

MARINE INVERTEBRATES

Editor

Ian Hunter, BU1619

New Listings



Scott#	Denom	Common Name/Scientific Name	Family/Subfamily	Code
CHRISTMAS ISLAND 2014 August 12 (Red Crab Migration) (Set of 2)				
530	70c	Red Crab, <i>Gecarcoidea natalis</i>	Gecarcinidae	A*
531	\$2.10	Red Crab, <i>Gecarcoidea natalis</i>	Gecarcinidae	A*
CURAÇAO 2014 October 16 (Caricatures of Marine Life) (Set of 5)				
205	100c	Turtle, starfish, shell		S B
206	119c	Fish, oyster with pearl		S B
207	177c	Octopus, snail		S B
209	500c	Crab, sea urchin, shells, starfish		S B
FRANCE 2014 January 4 (Items with Spirals) (s/a Bklt pane 12)				
4537	(66c)	Solarium Shell, <i>Solarium</i> sp.	Architectonicidae	A
4548a		Bklt pane 12 (Sc#4537–48)		
2014 January 20 (Signs of the Zodiac) (s/a Bklt pane of 12)				
4557	(61c)	Stylized Cancer the Crab		S
4565a		Bklt pane 12 (Sc#4554–65)		
2014 March 14 (Way of St. James) (MS of 4)				
4583	Margin	Shell as decoration in building		Z
2014 May 3 (Vacation) (s/a Bklt pane of 12)				
4609	(61c)	Stylized Snail with trailer for shell		S
4610	(61c)	Stylized Crab building sand castle		S
4613	(61c)	Stylized Lobster holding beach gear		S
4619	(61c)	Stylized Geese, tent, snails on picnic plate		S
4619a		Bklt pane 12 (Sc#4608–19)		
FRENCH SOUTHERN & ANTARCTIC TERR. 2015 January 1 (Marine Life)				
515	66c	Antarctic Krill, <i>Euphausia superba</i>	Euphausiidae	A*
GREENLAND 2014 June 11 (Contemporary Art) (Set of 3)				
676	24k	Shells in painting of snow hut		B*
GRENADA 2013 April 4 (History of Art) (MS of 3)				
3889		“The Birth of Venus,” by Sandro Botticelli showing Venus standing on a Shell		B
2013 October 16 (Seashells) (MS of 4 & SS of 1)				
3915a	\$3.25	<i>Phyllonotus brassica</i> (Cap: <i>Brassica phyllonotus</i>)	Muricidae	A*
3915b	\$3.25	Giant Lion’s Paw, <i>Nodipecten subnodosus</i> (Cap: <i>Lyropecten</i> s.)	Pectinidae	A*
3915c	\$3.25	Queen Conch, <i>Lobatus gigas</i>	Strombidae	A*
3915d	\$3.25	<i>Cymatium lotorium</i>	Ranellidae	A*
3916	SS \$9	Atlantic Triton, <i>Charonia variegata</i>	Ranellidae	A*
GRENADA GRENADINES 2013 November 28 (Pope Benedict XVI 85th Birthday) (MS of 4)				
2815d	\$3	Scallop, <i>Pecten jacobaeus</i> (on robe of Pope Benedict XVI)		C

GREAT BRITAIN (Guernsey)		2014 July 30 (Crustaceans) (Set of 6 & SS of 1)		
1260	41p	Chancre (brown crab), <i>Cancer pagurus</i>	Cancridae	A*
1261	54p	Lobster	Nephropidae	U A*
1262	55p	Velvet Swimming Crab, <i>Necora puber</i>	Portunidae	A*
1263	66p	Hermit Crab		U A*
1264	74p	Squat Lobster, <i>Galathea strigosa</i>	Galatheididae	A*
1265	83p	European Spider Crab, <i>Maja squinado</i>	Majidae	A*
1266	SS £3	Anemone Shrimp	Hippolytidae	U A*
KOREA (South)		2013 November 11 (Shell)		
2193A	390w	Triton Shell, <i>Charonia sauliae</i>	Ranellidae	A*
INDONESIA		2014 June 5 (Environmental Care) (Vert pair & SS of 2)		
2386b	3000r	Mud Crab, <i>Scylla serrata</i>	Portunidae	A*
2386		Vert pair (Sc#2386a–b)		
2387b	5000r	Mud Crab, <i>Scylla serrata</i>	Portunidae	A*
2387		SS of 2 (Sc#2387a–b)		
IRELAND		2014 July 21 (Wildlife) (Coil pair & 2ea Bklt pane 10)		
2041	68c	Green Crab, <i>Carcinus maenas</i>	Portunidae	A*
2041a		Vert pair (Sc#2040–41)		
2042	68c	Cushion Star, <i>Asterina gibbosa</i>	Asterinidae	A*
2042a		Bklt pane 10 (Sc#2042)		
2043	£1	Fireworks Anemone, <i>Pachycerianthus multiplicatus</i>	Cerianthidae	A*
2043a		Bklt pane 10 (Sc#2043)		
JAPAN		2014 June 3 (World Heritage Sites) (Horiz strip of 5)		
3690	82¥	Great Barrier Reef, Australia		A
		2014 July 7 (Constellations) (MS of 10)		
3698a	82¥	Cancer Crab in constellation		S
LUXEMBOURG		2014 September 23 (Children's Art) (Set of 2)		
1385	60c	Children's drawing of a garden showing two stylized Snails		S
MALAYSIA		2014 October 19 (Local Foods of Malaysia) (MS of 4)		
1513	\$1.40	Poon Choi including Shrimp		B
1513a		MS of 4 (Sc#1310–13)		B
MARSHALL ISLANDS		2014 June 16 (Shells) (Set of 2)		
1083	4c	Hawk Winged Conch, <i>Lobatus raninus</i>	Strombidae	A*
1084	\$19.99	Friiled Dogwinkle, <i>Nucella lamellosa</i>	Muricidae	A*
		2014 September 18 (Shells) (Set of 5)		
1090	\$5.75	Three Shells		U A*
1091	\$5.95	Five Shells		U A*
1092	\$6.10	Three Shells		U A*
1093	\$12.65	Three Shells		U A*
1094	\$17.90	Three Shells		U A*
MEXICO		2014 November 11 (Endemic Fauna of Mexico) (Set of 2)		
2904	13.50p	Brown Sea Cucumber, <i>Isostichopus fuscus</i>	Stichopodidae	A*
2905	15p	Red Sea Crab, <i>Danielum ixbauchac</i>	Pilumnidae	A*
		2014 November 24 (World Food Day) (Set of 2)		
2909	7p	Shrimp Boat and a hand holding a Shrimp		B*

MICRONESIA**2014 August 27** (Tropical Fish) (MS of 4 & 2ea SS of 2)

1094a	75c	Clownfish in Sea Anemone		B*
1094b	75c	Clownfish in Sea Anemone		B*
1094c	75c	Clownfish in Sea Anemone		B*
1094d	75c	Clownfish in Sea Anemone		B*
1096a	\$2	Clownfish in Sea Anemone		B*
1096b	\$2	Clownfish in Sea Anemone		B*
1097a	\$2	Clownfish in Sea Anemone		B*
1097b	\$2	Clownfish in Sea Anemone		B*

2014 September 15 (Seaglass) (SS of 1)

1101	Margin	LR: Stylized Octopus		S Z
------	--------	----------------------	--	-----

MOLDOVA**2014 September 30** (Fauna) (Set of 6 & SS of 6))

838	1.20L	Burgundy Snail, <i>Helix pomatia</i>	Helicinae	A*
842	3L	Freshwater Snail, <i>Viviparus viviparus</i>	Viviparidae	A*
843a		SS of 6 (Sc#838-43)		

MONACO**2015 February 25** (Jellyfish) (SS of 2)

2791a	€1	Floating Bell Jellyfish, <i>Phyllorhiza punctata</i>	Phyllorhiza	A*
2791b	€1	Mauve Stinger Jellyfish, <i>Pelagia noctiluca</i>	Pelagiidae	A*
2791	Margin	Top: Floating Bell Jellyfish, <i>Phyllorhiza punctata</i>	Phyllorhiza	Z*

NEW CALEDONIA**2014 April 22** (UNESCO World Heritage Site)

1174	110fr	Corals (with sea snake in North and East Coastal Zone)		B*
------	-------	--	--	----

2014 June 6 (Landscapes & Wildlife) (Set of 4)

1178	75fr	Koné Coral Reef		A
------	------	-----------------	--	---

SAMOA**2014 January 10** (Marine Life) (Set of 12)

1175	\$7	Bear Paw Clam, <i>Hippopus hippopus</i>	Tridacnidae	A
------	-----	---	-------------	---

**ANIMALS; DOGS & CATS; HORSES; INSECTS; BUGS
 BUTTERFLIES; MALARIA; FLOWERS & PLANTS; ORCHIDS
 MUSHROOMS; MARINE LIFE; FISH; TURTLES; REPTILES
 SHELLS; WHALES & SEALS; BIRDS; MINERALS
 MIXED BIOLOGY TOPICS**

Write for the price list of your choice

EASTERN SHORE STAMP COMPANY

P.O. BOX 241, SEAFORD, DE 19963

e-mail: essc@comcast.net Phone - Phone: (302) 629-2328

NEW ZEALAND NATIVE SEASHELLS

[Ed. Note: This article is from an official release by New Zealand Post.]

New Zealand's geological isolation and unique environment has allowed for thousands of fascinating endemic species to thrive. In this New Zealand Native Seashells stamp issue, New Zealand Post takes a look at just five species of seashells that live in the local waters.

The species featured on the stamps are Silver Paua (*Haliotis australis*), Scott's Murex (*Rolandiella scotti*), Golden Volute (*Provocator mirabilis*), Fan Shell (*Talochlamys gemmulata*) and Opal Top Shell (*Cantharidus opalus*). The fan shell and opal top shell hold a special place in New Zealand history. Each of these species is endemic to New Zealand waters. The scientific name is printed alongside their image.



The set of five stamps was issued nationwide on 6 May 2015.

Seashells are a familiar sight on New Zealand shorelines. More than 2,000 native seashell species thrive in local waters.

“This stamp issue follows on from our very popular New Zealand Native Ferns stamp issue,” said Simon Allison, Head of Stamps and Coins at New Zealand Post. “We were lucky enough to work with some real seashell experts and enthusiasts in bringing this issue together.

“Two of the shells that feature on the stamps hold a special place in New Zealand history. The fan shell that appears on the \$2.50 stamp was collected from the wreckage of the *Wahine* perfectly intact, which is remarkable as the shell is quite fragile. The opal top shell on the \$3.00 stamp was the first New Zealand animal to be scientifically recorded and illustrated.”

Included in the issue is a Limited Edition, containing further information on these gorgeous seashells. The Limited Edition contains exclusive products and has been produced in limited numbers. Each one is individually numbered and contains a booklet written by Kerry Walton, who is completing his Master of Science at Victoria University and has been doing research on shells and other mollusks in association with the Museum of New Zealand Te Papa Tongarewa for a number of years.





ENTOMOLOGY

Editor

Donald P. Wright, Jr., BU243
and José Reis



New Listings

Scott#	Denom	Common Name/Scientific Name	Family/Subfamily	Code
--------	-------	-----------------------------	------------------	------

[Assoc. Ed. Note: I have added José Reis in Angola to the authorship heading. He has sources to new listings, including pictures, before I see them in Scott and he is almost like the old Linn's Stamp News listings used to be. I have asked him what his sources are and he only says they are many and varied.]

BELGIUM

2015 May 11

a	2 local	Madagascar Flatid Leaf-Bug, <i>Phromnia rosea</i> (with nymphs)	Flatidae, Flatinae	
b	2 local	Lappet Moth, <i>Gastropacha quercifolia</i> L.	LAS, Gastropachinae	
c	2 local	Giant Leaf Insect, <i>Phyllium giganteum</i> Hausleithner	Phylliidae, Phylliinae	
d	2 local	DeHaan's Haaniella, <i>Haaniella dehaanii</i> Westwood	Heteropterygidae, Heteropteryginae	
e	2 local	Orchid Mantis, <i>Hymenopus coronatus</i> Olivier	HYM, Hymenopodinae	

BHUTAN

2014 December 17 (Butterflies of Bhutan) (MS of 4 & SS of 1)

a	25nu	Tigerbrown, <i>Orinoma damaris</i> Gray	NYM, Satyrinae	A*
b	25nu	Panther, <i>Neurosigma siva</i> Westwood	NYM, Limenitidinae	A*
c	25nu	Blue Duke, <i>Bassarona durga</i> Moore (Cap: <i>Euthalia durga</i>)	NYM, Limenitidinae	A*
d	25nu	Blue Pansy, <i>Junonia orithya</i> L.	NYM, Nymphalinae	A*
Margin		UL & UR: Stylized BUTTERFLY		S Z
		ML: U/I BUTTERFLY		U Z
		LL: Stylized BUTTERFLY wing		S Z
SS 80nu		Ludlow's Bhutan Swallowtail, <i>Bhutanitis ludlowi</i> Gabriel	PAP, Parnassiinae	A*
Margin		UL & UR: Stylized BUTTERFLY		S Z
		ML: <i>Pieris</i> sp.	PIE, Pierinae	U Z
		LL: Stylized BUTTERFLY wing		S Z

DOMINICAN REPUBLIC

2014 November 20 (Butterflies) (MS of 12) (Additional Data)

1565a	25p	Florida Leafwing, <i>Anaea troglodyta</i> Fabr.	NYM, Charaxinae	A*
1565b	25p	Godart's Peacock, <i>Anartia lytrea</i> Godart	NYM, Nymphalinae	A*
1565c	25p	Stillman's Skipper, <i>Burca stillmani</i> Bell & Comstock	HES, Pyrginae	A*
1565d	25p	Hispaniolan Skipper, <i>Burca hispaniolae</i> Bell & Comstock	HES, Pyrginae	A*
1565e	25p	Hispaniolan Bluewing, <i>Myscelia aracynthia</i> Dalman	NYM, Biblidinae	A*
1565f	25p	<i>Archimestra teleboas</i> Ménétries	NYM, Biblidinae	A*
1565g	25p	Hispaniolan Checkerspot, <i>Atlantea cryptadia</i> Sommer & Schwartz	NYM, Nymphalinae	A*
1565h	25p	Antillean Clearwing, <i>Greta diaphanus quisqueya</i> Fox	NYM, Danainae	A*
1565i	25p	Machaonides Swallowtail, <i>Papilio machaonides</i> Esper	PAP, Papilioninae	A*
1565j	25p	<i>Choranthus haitensis</i> Skinner	HES, Hesperinae	A*
1565k	25p	Hispaniolan Leafwing, <i>Memphis verticordia</i> Hübner	NYM, Charaxinae	A*
1565l	25p	Fiery Sulfur, <i>Eurema pyro</i> Godart	PIE, Coliadinae	A*

FRENCH SOUTHERN & ANTARCTIC TERR. 2015 January 1 (Set of 2)

520	66c	<i>Amalopteryx maritima</i> Eaton	Ephydridae, Ephydrinae	A
521	€2	<i>Ectemnorhinus vanhoefenianus</i> Enderlein	CUR, Entiminae	A

GAMBIA		2014 October 20 (Butterflies) (2ea MS of 4 & 2ea SS of 1) (New data)		
a	50d	Christmas Butterfly, <i>Papilio demodocus</i> Esper	PAP, Papilioninae	A*
b	50d	Angola White Lady, <i>Graphium angolanus</i> Goeze	PAP, Papilioninae	A*
c	50d	Plain Tiger, <i>Danaus chrysippus</i> L.	NYM, Danainae	A*
d	50d	Mocker Swallowtail, <i>Papilio dardanus</i> Brown	PAP, Papilioninae	A*
	SS 150d	Giant Blue Swallowtail, <i>Papilio zalmoxis</i> Hewitson	PAP, Papilioninae	A*
a	50d	African Map Butterfly, <i>Cyrestis camillus</i> Fabr.	NYM, Cyrestinae	A*
b	50d	Green-Banded Swallowtail, <i>Papilio nireus</i> L.	PAP, Papilioninae	A*
c	50d	Gold-Banded Forester, <i>Euphaedra neophron</i> Hopffer	NYM, Limenitidinae	A*
d	50d	African Caper White, <i>Belenois aurota</i> Fabr.	PIE, Pierinae	A*
	SS 150d	Blood-Red Cymothoe, <i>Cymothoe sangaris</i> Godart	NYM, Limenitidinae	A*
INDIA		2015 (National Philatelic Museum)		
	5r	Monarch, <i>Danaus plexippus</i> L. (with personalizable label)	NYM, Danainae	
	Margin	New Guinea Birdwing, <i>Troides priamus</i> L.	PAP, Papilioninae	
KOREA (South)		2014 February 28 (Characters from TV Series “Larva”) (MS of 10)		
2420a	300w	Stylized caterpillar (Red at microphone)		S
2420b	300w	Stylized caterpillar (Pink with flowers)		S
2420c	300w	Stylized caterpillar (Brown with dung ball)		S
2420d	300w	Stylized caterpillar (Black with boxing gloves)		S
2420e	300w	This is a cartoon bird		
2420f	390w	Stylized caterpillar (Yellow eating roll)		S
2420g	390w	Stylized caterpillar (Red & Yellow with open mouth)		S
2420h	390w	Stylized caterpillar (Red & Yellow with basketball)		S
2420i	400w	Stylized caterpillar (Red & Yellow with lollipop)		S
2420j	1930w	Stylized caterpillar (Yellow)		S
LAOS		2013 April 22 (Silk Processing) (Set of 4 & SS of 4)		
1864	2000k	Silkworm, <i>Bombyx mori</i> L. (boiling cocoons)	Bombycidae	B
1865	3000k	Silkworm, <i>Bombyx mori</i> L. (spinning silk)	Bombycidae	B
1866	4000k	Silkworm, <i>Bombyx mori</i> L. (collecting cocoons)	Bombycidae	B
1867	5000k	Silkworm, <i>Bombyx mori</i> L. (diet of mulberry leaves, no insect)	Bombycidae	R
1867a		SS of 4 (Sc#1864–67)		
LIBYA		2013 December 25 (2013 National Stamp Exhibition)		
1782	100d	UL: Old World Swallowtail, <i>Papilio machaon</i> L.	PAP, Papilioninae	B
		ML: Monarch, <i>Danaus plexippus</i> L.	NYM, Danainae	B
MACAO		2015 May 5 (Macao Wetlands) (Set of 4)		
d	5.50pa	Crimson Marsh Glider, <i>Trithemis aurora</i> Burmeister ♂	LIB, Trithemistinae	A*
MEXICO		2014 December 18 (20th Anniversary of NAFTA)		
2922	11.50p	Monarch, <i>Danaus plexippus</i> L.	NYM, Danainae	A*
MICRONESIA		2014 September 15 (Qi Baishi Paintings) (2ea MS of 4 & 2ea SS of 1)		
1103b	\$1.20	Flowers & Cricket	Gryllidae	S
	Margin	UR: Dragonfly	Odonata	S Z
1104a	\$1.20	Flowers & Beetle	Coleoptera	S
1104b	\$1.20	Flowers & Dragonfly	Odonata	S
1104c	\$1.20	Flowers & Dragonfly, different	Odonata	S
1104d	\$1.20	Flowers & Grasshopper	Acrididae	S
PALESTINIAN AUTHORITY		2014 (Bees)		
	300m	L: Western Honeybee, <i>Apis mellifera</i> L.	API, Apinae	
		R: Hoverfly, <i>Eupeodes corollae</i> Fabr. (<i>Syrphus</i> of some)	SYR, Syrphinae	

PHILIPPINES**2015 March 27** (Dragonflies of Philippines) (MS of 9 & SS of 1+label)

10p	Beautiful Demoiselle, <i>Calopteryx virgo meridionalis</i> Selys	CAL, Calopteryginae	A*
10p	Small Red Dragonfly, <i>Ceragrion tenellum</i> DeVillers	COE, Coenagrioninae	A*
10p	Golden-Ringed Dragonfly, <i>Cordulegaster boltonii</i> Donovan	CORD, Cordulegastrinae	A*
10p	Blue-Tailed Damselfly, <i>Ischnura elegans</i> Vander Linden	COE, Ischnurinae	A*
10p	White-Legged Damselfly, <i>Platycnemis pennipes</i> Pallas	Platycnemididae, Platycnemidinae	A*
10p	Emperor Dragonfly, <i>Anax imperator</i> Leach	AES, Aeshninae	A*
10p	Yellow Clubtail, <i>Gomphus simillimus</i> Selys	GOM, Gomphinae	A*
10p	Ruddy Darter, <i>Sympetrum sanguineum</i> Mueller	LIB, Sympetrinae	A*
10p	Halloween Pennant Dragonfly, <i>Celithemis eponina</i> Drury	LIB, Leucorrhininae	A*
SS 40p	Broad-Bodied Chaser, <i>Libellula depressa</i> L.	LIB, Libellulinae	A*
Margin	ML: Ruddy Darter, <i>Sympetrum sanguineum</i> Mueller	LIB, Sympetrinae	Z*
	UR: Blue-Tailed Damselfly, <i>Ischnura elegans</i> Vander Linden	COE, Ischnurinae	Z*
	MR: Yellow Clubtail, <i>Gomphus simillimus</i> Selys	GOM, Gomphinae	Z*

SINGAPORE**2015 April 18** (Lee Kong Chian Natural History Museum) (Set of 4)

70c	Giant Hawker, <i>Tetracanthagyna plagiata</i> Waterhouse	AES, Aeshninae	A
-----	--	----------------	---

UZBEKISTAN**2014 November 3**

500s on 1k	<i>Melitaea acraeina</i> Staudinger (Sc#2 surch & ovpt new date)	NYM, Nymphalinae	A*
------------	--	------------------	----

Insect Family Abbreviations

ACR	Acrididae	EUM	Eumenidae	PAS	Passalidae
AES	Aeshnidae	FOR	Formicidae	PHA	Phasmatidae
ANO	Anobiidae	FUL	Fulgoridae	PHY	Phylliidae
API	Apinae	GEO	Geometridae	PIE	Pieridae
ARC	Arctiidae	GRA	Gracillariidae	PLU	Plutellidae
BEL	Belostomatidae	GRY	Gryllidae	POM	Pompilidae
BLA	Blattidae	GRYA	Gryllacrididae	PSY	Psychodidae
BRA	Brahmaeidae	HAL	Halictidae	PTE	Pterophoridae
BRAC	Braconidae	HES	Hesperiidae	PYR	Pyalidae
BUP	Buprestidae	HYM	Hymenopodidae	RED	Reduviidae
CAL	Calopterygidae	ICH	Ichneumonidae	SAR	Sarcophagidae
CAR	Carabidae	LAM	Lampyridae	SAT	Saturniidae
CAS	Castniidae	LAS	Lasiocampidae	SCA	Scarabaeidae
CER	Cerambycidae	LIB	Libellulidae	SCO	Scoliidae
CHR	Chrysomelidae	LUC	Lucanidae	SES	Sesiidae
CHRY	Chrysopidae	LYC	Lycaenidae	SIL	Silphidae
CIC	Cicadellidae	LYG	Lygaeidae	SIR	Siricidae
CICA	Cicadidae	LYM	Lymantriidae	SPH	Sphingidae
COC	Coccinellidae	MAN	Mantidae	SPHE	Sphecidae
COE	Coenagrionidae	MEG	Meganeuridae (extinct)	STA	Staphylinidae
COR	Corydalidae	MEGA	Megachilidae	SYR	Syrphidae
CORD	Cordulegastridae	MEL	Meloidae	TAB	Tabanidae
CORE	Coreidae	MIR	Miridae	TEN	Tenebrionidae
CRA	Crabronidae	MUS	Muscidae	TEP	Tephritidae
CRAM	Crambidae	MYR	Myrmeleontidae	TET	Tettigoniidae
CUL	Culicidae	NOC	Noctuidae	TIP	Tipulidae
CUR	Curculionidae	NOL	Nolidae	TOR	Tortricidae
DER	Dermestidae	NOT	Notodontidae	TRI	Trichogrammatidae
DRO	Drosophilidae	NYM	Nymphalidae	URA	Uraniidae
DYT	Dytiscidae	OEC	Oecophoridae	VES	Vespidae
ELA	Elateridae	PAP	Papilionidae	ZYG	Zygaenidae

Beyond the Catalog

The following listings are for issues from Stamperija, Ltd., who are allowed by the countries listed to sell them directly to the public. Most, if not all, of these never reach the postal authorities of the countries concerned and will not be listed in most catalogs, although some occasionally are. I list them for those who may be interested in them, or for those who want to know if the philatelic community accepts them as valid postage stamps.

BURUNDI

2014 (Beetles & Flowers) (Stamperija)

a	1180fr	<i>Homoderus mellyi</i> Parry	LUC, Lucaninae
b	1180fr	Giant African Fruit Beetle, <i>Mecynorrhina polyphemus</i> Fabr.	SCA, Cetoniinae
c	1180fr	Giant Acacia Click Beetle, <i>Tetralobus flabellicornis</i> L.	ELA, Agrypninae
d	1180fr	U/I BEETLE	Coleoptera
Margin	UR:	<i>Homoderus mellyi</i> Parry	LUC, Lucaninae
	MR:	Ghost Mantis, <i>Phyllocrania paradoxa</i> Burmeister	HYM, Epaphroditinae
	LR:	Foam Locust, <i>Dictyophorus spumans</i> Thunberg	PYRG, Pyrgomorphae

CHAD

2012 September 3 (New data) (Stamperija) (MS of 4)

The whistle cricket is so named because shepherds dry it, remove the legs, and use it as a whistle.

c	500fr	Matabele Ant, <i>Megaponera analis</i> Latreille (Cap: <i>foetens</i>)	FOR, Ponerinae	A*
d	500fr	Whistle Cricket, <i>Eugaster spinulosa</i> L.	TET, Hetrodinae	A*

2013 April 18 (Scouts & Butterflies)(Stamperija)(2ea SS of 1 & SS of 2)

SS 550fr	Desert Locust, <i>Schistocerca gregaria</i> Forskål	ACR, Cyrtacanthacridinae	B*	
Margin	UL: Eastern Goliath Beetle, <i>Goliath orientalis meleagris</i> Sjöstedt	SCA, Cetoniinae	Z*	
	UR: Titan Beetle, <i>Titanus giganteus</i> L.	CER, Prioninae	Z*	
	MR: Mardi Gras Beetle, <i>Stephanocrates preussi</i> Kolbe	SCA, Cetoniinae	Z*	
	LR: <i>Rhynocoris bituberculatus</i> Stål	RED, Harpactorinae	Z*	
	Bot: <i>Cantharocnemis plicipennis</i> Fairmaire	CER, Prioninae	Z*	
SS 550fr	African Migrant, <i>Catopsilia florella</i> Fabr.	PIE, Coliadinae	B*	
Margin	UL: Vine Leaf Vagrant, <i>Eronia cleodora</i> Hübner	PIE, Pierinae	Z*	
	LL: Grass Jewel, <i>Chilades trochylus</i> Freyer	LYC, Polyommatae	Z*	
	Top: Golden Arab, <i>Colotis chrysonome</i> Klug	PIE, Pierinae	Z*	
	UR: Small Orange Tip, <i>Colotis evagore</i> Klug	PIE, Pierinae	Z*	
	LR: Pea Blue, <i>Lampides boeticus</i> L.	LYC, Polyommatae	Z*	
	Bot: Dark Grass Blue, Clover Blue, <i>Zizina antanossa</i> Mabille	LYC, Polyommatae	Z*	
a	550fr	African Migrant, <i>Catopsilia florella</i> Fabr.	PIE, Coliadinae	B*
b	550fr	Desert Locust, <i>Schistocerca gregaria</i> Forskål	ACR, Cyrtacanthacridinae	B*
Margin	UL: GRASSHOPPER (Cap: Criquet Oku)	Orthoptera	U Z*	
	Top: Black-Striped Hairtail, <i>Anthene amarah</i> Guérin-Méneville	LYC, Polyommatae	Z*	
	UR: <i>Xystrocera</i> sp.	CER, Cerambycinae	U Z*	
	Bot: <i>Platymeris horrida</i> Stål	RED, Reduviinae	Z*	
	LR: Same (on computer screen)		B Z	
	LL: Amethyst Blue, <i>Zizeeria knysna</i> Trimen	LYC, Polyommatae	Z*	

2013 (Butterflies I) (Stamperija) (MS of 4)

a	1000fr	Eastern Tiger Swallowtail, <i>Papilio glaucus</i> L.	PAP, Papilioninae	A*
b	1000fr	Pipevine Swallowtail, <i>Battus philenor</i> L.	PAP, Papilioninae	A*
c	1000fr	Common Morpho, <i>Morpho helenor peleides</i> Kollar	NYM, Morphinae	A*
d	1000fr	Blue Triangle, <i>Graphium sarpedon</i> L.	PAP, Papilioninae	A*

2013 (Butterflies II) (Stamperija) (MS of 4)

a	1000fr	Common Blue, <i>Polyommatus icarus</i> Rottemburg	LYC, Polyommatae	A*
b	1000fr	Monarch, <i>Danaus plexippus</i> L. ♂	NYM, Danainae	A*
c	1000fr	Flambeau, <i>Dryas iulia</i> Fabr.	NYM, Heliconiinae	A*
d	1000fr	Purple Emperor, <i>Apatura iris</i> L.	NYM, Apaturinae	A*

CONGO DEMOCRATIC REPUBLIC			
		2013 (Mushrooms) (8ea SS of 1) (Stamperija)	
	900fr	unk: Golden Pansy, <i>Junonia sophia</i> Fabr.	NYM, Nymphalinae Z
	900fr	unk: Foxy Charaxes, <i>Charaxes jasius</i> L.	NYM, Charaxinae Z
	900fr	unk: African Moon Moth, <i>Argema mimosae</i> Boisduval	SAT, Saturniinae Z
	900fr	unk: White-barred Charaxes, <i>Charaxes brutus natalensis</i> Staudinger	NYM, Charaxinae Z
	900fr	unk: <i>Macrotermes natalensis</i> Haviland (with mound)	Termitidae, Macrotermitinae Z
	900fr	unk: Savannah Charaxes, <i>Charaxes etesipe</i> Godart	NYM, Charaxinae Z
	900fr	MR: <i>Dorylus</i> sp.	FOR, Dorylinae Z*
	900fr	MR: Yellow Pansy, <i>Junonia hierta</i> Fabr.	NYM, Nymphalinae Z*
	4×900fr	MS of 4 (Mushrooms)	
	Margin	UL: Mocker Swallowtail, <i>Papilio dardanus</i> Brown	PAP, Papilioninae Z*
		UR: White-banded Swallowtail, <i>Papilio cynorta</i> Fabr.	PAP, Papilioninae Z*
	4×900fr	MS of 4 (Mushrooms)	
	Margin	UL: Red Imported Fire Ant, <i>Solenopsis invicta</i> Buren	FOR, Myrmicinae Z*
		Bot: Bush Scarlet, <i>Axiocerses amanga</i> Westwood	LYC, Theclinae Z*
CONGO PEOPLE'S REPUBLIC			
		2013 (Butterflies of the World I) (Stamperija) (MS of 4)	
a	750fr	Blue Tiger, <i>Tirumala limniace</i> Cramer	NYM, Danainae A*
b	750fr	New Guinea Birdwing, <i>Troides priamus</i> L.	PAP, Papilioninae A*
c	750fr	Western Tailed Blue, <i>Cupido amyntula</i> Boisduval	LYC, Polyommatae A*
d	750fr	<i>Oleria estella</i> Hewitson	NYM, Danainae A*
		2013 (Butterflies of the World II) (Stamperija) (MS of 4)	
a	750fr	Eastern Tiger Swallowtail, <i>Papilio glaucus</i> L. ♀	PAP, Papilioninae A*
b	750fr	Monarch, <i>Danaus plexippus</i> L. ♂	NYM, Danainae A*
c	750fr	Pipevine Swallowtail, <i>Battus philenor</i> L.	PAP, Papilioninae A*
d	750fr	<i>Zygaena</i> sp.	ZYG, Zygaeninae A*
		2013 (Butterflies of the World III) (Stamperija) (MS of 4)	
a	750fr	Mexican Blue Wing, Blue Wave, <i>Myscelia ethusa</i> Boisduval	NYM, Biblidinae A*
b	750fr	Old World Swallowtail, <i>Papilio machaon</i> L.	PAP, Papilioninae A*
c	750fr	Small Postman, <i>Heliconius erato</i> L.	NYM, Heliconiinae A*
d	750fr	Monarch, <i>Danaus plexippus</i> L.	NYM, Danainae A*
		2013 (Butterflies of the World IV) (Stamperija) (MS of 4)	
a	750fr	<i>Abraximorpha davidii</i> Mabilie	HES, Pyrginae A*
b	750fr	Caledonian Blue Swallowtail, <i>Papilio montrouzieri</i> Boisduval	PAP, Papilioninae A*
c	750fr	Common Morpho, <i>Morpho helenor peleides</i> Kollar	NYM, Morphinae A*
d	750fr	Blue Pansy, <i>Junonia orithya</i> L.	NYM, Nymphalinae A*
		2013 (Butterflies of the World V) (Stamperija) (MS of 4)	
a	750fr	New Guinea Birdwing, <i>Troides priamus</i> L.	PAP, Papilioninae A*
b	750fr	<i>Danaus</i> sp.	NYM, Danainae U A*
c	750fr	Mourning Cloak, <i>Nymphalis antiopa</i> L.	NYM, Nymphalinae A*
d	750fr	Red Admiral, <i>Vanessa atalanta</i> L.	NYM, Nymphalinae A*
		2013 (Butterflies of the World VI) (Stamperija) (MS of 4)	
a	750fr	<i>Danaus</i> sp.	NYM, Danainae U Z
b	750fr	U/I BUTTERFLY	U Z
c	750fr	Monarch, <i>Danaus plexippus</i> L.	NYM, Danainae Z
d	750fr	U/I BUTTERFLY	U Z

CONGO P. R. (continued)		2013 (Butterflies of the World VII) (Stamperija) (MS of 4)	
a	750fr U/I BUTTERFLY	Pieridae	U Z
b	750fr Monarch, <i>Danaus plexippus</i> L.	NYM, Danainae	Z
c	750fr U/I BUTTERFLY	NYM, Heliconiinae	U Z
d	750fr Eastern Tiger Swallowtail, <i>Papilio glaucus</i> L. ♂	PAP, Papilioninae	Z
		2014 (Bees) (Stamperija) (MS of 4 & SS of 1)	
a	600fr Red-Tailed Bumblebee, <i>Bombus lapidarius</i> L.	API, Apinae	A*
b	600fr <i>Andrena agilissima</i> Scopoli	Andrenidae, Andreninae	A*
c	600fr European Wool-Carder Bee, <i>Anthidium manicatum</i> L.	MEGA, Megachilinae	A*
d	600fr Green Sweat Bee, <i>Agapostemon texanus</i> Cresson	HAL, Halictinae	A*
	Margin LL: 9-Spotted Ladybird, <i>Coccinella novemnotata</i> Herbst	COC, Coccinellinae	Z*
	Bot: Western Honeybee, <i>Apis mellifera</i> L. (7ea with skep)	API, Apinae	Z*
	SS 1200fr Violet Carpenter Bee, <i>Xylocopa violacea</i> L.	API, Xylocopinae	A*
	Margin UL: 9-Spotted Ladybird, <i>Coccinella novemnotata</i> Herbst	COC, Coccinellinae	Z*
	LL, UR, & LR: Western Honeybee, <i>Apis mellifera</i> L.	API, Apinae	Z*
		2014 (Butterflies) (Stamperija) (MS of 4 & SS of 1)	
a	600fr Spanish Festoon, <i>Zerynthia rumina</i> L.	PAP, Parnassiinae	A*
b	600fr The Mosaic, <i>Colobura dirce</i> L.	NYM, Nymphalinae	A*
c	600fr Large Fairy Hairstreak, <i>Hypolycaena antifaunus</i> Westwood	LYC, Theclinae	A*
d	600fr <i>Chorinea amazon</i> Saunders	RIO, Riordininae	A*
	Margin UL & UR: Stylized BUTTERFLY		S Z
	ML & MR: Stylized MOTH		S Z
	Ctr: Stylized MOTH		S Z
	LL & LR: U/I MOTH		U Z
	SS 1200fr Cecropia Moth, <i>Hyalophora cecropia</i> L.	SAT, Saturniinae	A*
	Margin Top: Stylized MOTH		S Z
	Bot: Stylized MOTH		S Z
	LL & LR: U/I MOTH		U Z
GUINEA		2015 March 20 (Butterflies) (Stamperija) (MS of 4 & SS of 1)	
a	10000fr Orange Tip, <i>Anthocharis cardamines</i> L.	PIE, Pierinae	A*
b	10000fr Large Blue, <i>Maculinea arion</i> L.	LYC, Polyommatae	A*
c	15000fr Buckeye, <i>Junonia coenia</i> Hübner	NYM, Nymphalinae	A*
d	15000fr Gulf Fritillary, <i>Agraulis vanillae</i> L.	NYM, Heliconiinae	A*
	Margin UL: <i>Colias</i> sp. (small)	PIE, Coliadae	U Z*
	LL: Rusty-tipped Page, <i>Siproeta epaphus</i> Latreille	NYM, Nymphalinae	Z*
	LR: Old World Swallowtail, <i>Papilio machaon</i> L.	PAP, Papilioninae	Z*
	SS 40000fr L: Old World Swallowtail, <i>Papilio machaon</i> L.	PAP, Papilioninae	B*
	UR: Old World Swallowtail, <i>Papilio machaon</i> L. (larva)	PAP, Papilioninae	B*
	LR: Luna Moth, <i>Actias luna</i> L.	SAT, Saturniinae	B*
	Margin U/I BUTTERFLY	Lepidoptera	U Z*
GUINEA-BISSAU		2015 January 15 (Honeybees) (Stamperija) (MS of 4 & SS of 1)	
a	900fr Western Honeybee, <i>Apis mellifera</i> L. (on yellow flower)	API, Apinae	A*
b	900fr Western Honeybee, <i>Apis mellifera</i> L. (on white flower)	API, Apinae	A*
c	900fr Western Honeybee, <i>Apis mellifera</i> L. (on pink petal)	API, Apinae	A*
d	900fr Western Honeybee, <i>Apis mellifera</i> L. (in flight)	API, Apinae	A*
	SS 3300fr Same (also in margin with honeycomb)	API, Apinae	A*

GUINEA-BISSAU (continued) **2015 February 18** (Butterflies) (Stamperija) (MS of 4 & SS of 1)

a	900fr	Kaiser-I-Hind, <i>Teinopalpus imperialis</i> Hope	PAP, Papilioninae	A*
b	900fr	Top: Velutina Cracker, <i>Hamadryas velutina</i> Bates	NYM, Biblidinae	B*
		Bot: Red Cracker, <i>Hamadryas amphinome</i> L.	NYM, Biblidinae	B*
c	900fr	Owl Moth, <i>Brahmaea wallichii</i> Gray (with larva)	BRA, Brahmaeinae	A*
d	900fr	Top: Blue Mormon, <i>Papilio polymnestor</i> Cramer	PAP, Papilioninae	B*
		Bot: Red Mormon, <i>Papilio deiphobus rumanzovia</i> Eschscholtz	PAP, Papilioninae	B*
	Margin	UL: Cecropia Moth, <i>Hyalophora cecropia</i> L.	SAT, Saturniinae	Z*
		UR: Chinese Tussah Moth, <i>Antheraea pernyi</i> Guérin-Méneville	SAT, Saturniinae	Z*
	SS 2200fr	<i>Agrias claudina</i> Godart	NYM, Charaxinae	A*
	Margin	UL: Red Mormon, <i>Papilio deiphobus rumanzovia</i> Eschscholtz	PAP, Papilioninae	Z*
		UR: Atlas Moth, <i>Attacus atlas</i> L.	SAT, Saturniinae	Z*
		LL: Cecropia Moth, <i>Hyalophora cecropia</i> L.	SAT, Saturniinae	Z*

2015 March 24 (Bees & Flowers) (Stamperija) (MS of 4 & SS of 1)

a	800fr	Western Honeybee, <i>Apis mellifera</i> L. (with poppy)	API, Apinae	B
b	800fr	Western Honeybee, <i>Apis mellifera</i> L. (with chrysanthemum)	API, Apinae	B
c	800fr	Western Honeybee, <i>Apis mellifera</i> L. (with tufted lily)	API, Apinae	B
d	800fr	Western Honeybee, <i>Apis mellifera</i> L. (with daisy)	API, Apinae	B
	SS 2400fr	Same (with Swan River daisy) (also on flowers in margin)	API, Apinae	B

IVORY COAST**2014 March 10** (African Fauna-Butterflies)(Stamperija)(MS of 4 & SS of 1)

a	250fr	Shining Red Charaxes, <i>Charaxes zingha</i> Stoll	NYM, Charaxinae	A*
b	350fr	True Forester, <i>Euphaedra cyparissa</i> Cramer	NYM, Limenitidinae	A*
c	500fr	Imperial Blue Charaxes, <i>Charaxes imperialis</i> Butler	NYM, Charaxinae	A*
d	750fr	Western Emperor Swallowtail, <i>Papilio menestheus</i> Drury	PAP, Papilioninae	A*
	SS 2500fr	Cream-Banded Charaxes, <i>Charaxes hansali</i> Felder	NYM, Charaxinae	A*
Each stamp on the MS also issued in SS of 1 along with the large SS have the following in the margins:				
	Margin	UL: Angled Castor, <i>Ariadne ariadne</i> L.	NYM, Biblidinae	Z*
		ML: Shining Green Forester, <i>Bebearia barce</i> Doubleday	NYM, Limenitidinae	Z*
		LL: Blue-Spotted Charaxes, <i>Charaxes ameliae</i> Doumet	NYM, Charaxinae	Z*
		LR: Foxy Charaxes, <i>Charaxes jasius</i> L.	NYM, Charaxinae	Z*

MALI**2014** (Lepidopterists) (Stamperija) (6ea MS of 3 & 6ea SS of 1)

a	500fr	Common Map Butterfly, <i>Cyrestis thyodamas</i> Boisduval (Cap: <i>Jemadia hewitsonii</i>)	NYM, Cyrestinae	A*
b	500fr	<i>Chorinea amazon</i> Saunders	RIO, Riodininae	A*
c	1800fr	Walter Giesecking (1895-1956)		R
Margins show 26 Lepidoptera ordered down L, across top, down R				
		L: Scarlet Tiger Moth, <i>Callimorpha dominula</i> L.	ARC, Arctiinae	Z*
		L: U/I MOTH		U Z
		L: Adonis Blue, <i>Polyommatus bellargus</i> Rottemburg	LYC, Polyommatae	Z*
		L: Spanish Festoon, <i>Zerynthia rumina</i> L.	PAP, Parnassiinae	Z*
		L: <i>Callicore lyca</i> Doubleday	NYM, Biblidinae	Z*
		L: U/I BUTTERFLY		U Z
		L: Zebra, <i>Protographium marcellus</i> Cramer	PAP, Papilioninae	Z*
		L: Large Spotted Acraea, <i>Acraea zetes</i> L.	NYM, Heliconiinae	Z*
		L: <i>Semomesia croesus</i> Fabr.	RIO, Riodininae	Z*
		L: Eyed Hawkmoth, <i>Smerinthus ocellatus</i> L.	SPH, Smerinthinae	Z*
		L: Gold Drop Helicopsis, <i>Helicopsis cupido</i> L.	RIO, Riodininae	Z*
		T: Old World Swallowtail, <i>Papilio machaon</i> L. ♀	PAP, Papilioninae	Z*
		T: Provence Burnet Moth, <i>Zygaena occitanica</i> Villers	ZYG, Zygaeninae	Z*
		T: U/I BUTTERFLY		U Z
		T: <i>Evenus gabriela</i> Cramer	LYC, Theclinae	Z*

MALI (continued)

	T: Red Underwing, <i>Catocala nupta</i> L.	NOC, Catocalinae	Z*
	R: Peacock, <i>Nymphalis io</i> L.	NYM, Nymphalinae	Z*
	R: U/I BUTTERFLY		U Z
	R: Crimson-Speckled Moth, <i>Utetheisa pulchella</i> L.	ARC, Arctiinae	Z*
	R: Garden Tiger Moth, <i>Arctia caja</i> L.	ARC, Arctiinae	Z*
	R: Yellow Orange Tip, <i>Ixias pyrene</i> L.	PIE, Pierinae	Z*
	R: U/I BUTTERFLY		U Z
	R: White-Tailed Page, <i>Urania leilus</i> L.	URA, Uraniinae	Z*
	R: Common Jezebel, <i>Delias eucharis</i> Drury	PIE, Pierinae	Z*
	R: Green-Celled Cattleheart, <i>Parides childrenae</i> Gray ♂	PAP, Papilioninae	Z*
	R: U/I BUTTERFLY		U Z
SS 1800fr	Walter Giesecking (1895-1956)		R
Margins show 22	Lepidoptera (15 at L & 7 at R)		
	L: Old World Swallowtail, <i>Papilio machaon</i> L. ♀	PAP, Papilioninae	Z*
	L: Gold Drop Helicopsis, <i>Helicopsis cupido</i> L.	RIO, Riodininae	Z*
	L: U/I MOTH		U Z
	L: Apollo, <i>Parnassius apollo</i> L.	PAP, Parnassiinae	Z*
	L: Red Underwing, <i>Catocala nupta</i> L.	NOC, Catocalinae	Z*
	L: Provence Burnet Moth, <i>Zygaena occitanica</i> Villers	ZYG, Zygaeninae	Z*
	L: <i>Callicore lyca</i> Doubleday	NYM, Biblidinae	Z*
	L: U/I BUTTERFLY		U Z
	L: Verdant Hawkmoth, <i>Euchloron megaera</i> L.	SPH, Macroglossinae	Z*
	L: U/I BUTTERFLY		U Z
	L: Common Jezebel, <i>Delias eucharis</i> Drury	PIE, Pierinae	Z*
	L: Large Spotted Acraea, <i>Acraea zetes</i> L.	NYM, Heliconiinae	Z*
	L: New Guinea Birdwing, <i>Troides priamus</i> L.	PAP, Papilioninae	Z*
	L: <i>Bhutanitis thaidina</i> Blanchard	PAP, Parnassiinae	Z*
	L: <i>Semomesia croesus</i> Fabr.	RIO, Riodinidae	Z*
	R: African Moon Moth, <i>Argema mimosae</i> Boisduval	SAT, Saturniinae	Z*
	R: Peacock, <i>Nymphalis io</i> L.	NYM, Nymphalinae	Z*
	R: Red Underwing, <i>Catocala nupta</i> L.	NOC, Catocalinae	Z*
	R: Scarlet Tiger Moth, <i>Callimorpha dominula</i> L.	ARC, Arctiinae	Z*
	R: U/I BUTTERFLY		U Z
	R: Eyed Hawkmoth <i>Smerinthus ocellatus</i> L.	SPH, Smerinthinae	Z*
	R: Apollo, <i>Parnassius apollo</i> L.	PAP, Papilioninae	Z*
a	500fr Harmonia Mantle, <i>Caria rhacotis</i> Godman & Salvin	RIO, Riodininae	Z*
b	500fr <i>Trabala ganessa</i> Roepke ♀	LAS, Lasiocampinae	A*
c	1800fr Johann Nepomuk Cosmas Michael Denis (1729-1800)		R
Margin	Top: Apollo Metalmark, <i>Lyropteryx apollonia</i> Westwood (v)	RIO, Riodininae	Z*
	ML & MR: <i>Asterope degandii adamsi</i> Lathy	NYM, Biblidinae	Z*
	LL: Cecropia Moth, <i>Hyalophora cecropia</i> L.	SAT, Saturniinae	Z*
	UR: Cramer's 88, <i>Diaethria clymena</i> Cramer	NYM, Biblidinae	Z*
	LR: Owl Butterfly, <i>Caligo idomeneus</i> L.	NYM, Morphinae	Z*
SS 1800fr	Johann Nepomuk Cosmas Michael Denis (1729-1800)		R
Margin	Top: Cecropia Moth, <i>Hyalophora cecropia</i> L.	SAT, Saturniinae	Z*
	UL: Mourning Cloak, <i>Nymphalis antiopa</i> L.	NYM, Nymphalinae	Z*
	ML & MR: <i>Asterope degandii adamsi</i> Lathy	NYM, Biblidinae	Z*
	LL: Ornate Moth, <i>Utetheisa ornatrix</i> L.	ARC, Arctiinae	Z*
	UR & LR: Apollo Metalmark, <i>Lyropteryx apollonia</i> Westwood	RIO, Riodininae	Z*

MALI (continued)

a	500fr	<i>Jemadia hewitsonii</i> Mabille	HES, Pyrrhopyginae	A*
b	500fr	Red Anartia, <i>Anartia amathea</i> L.	NYM, Nymphalinae	A*
c	1800fr	Edouard Ménétries (1802-1861)		R
	Margin	UL&LR: Rajah Brooke's Birdwing, <i>Troides brookiana</i> Wallace	PAP, Papilioninae	Z*
		Top: Monarch, <i>Danaus plexippus</i> L. ♀	NYM, Danainae	Z*
		ML: Paradise Birdwing, <i>Troides paradisea</i> Staudinger	PAP, Papilioninae	Z*
SS	1800fr	Edouard Ménétries (1802-1861)		R
	Margin	UL & MR: Paradise Birdwing, <i>Troides paradisea</i> Staudinger	PAP, Papilioninae	Z*
		ML: Rajah Brooke's Birdwing, <i>Troides brookiana</i> Wallace	PAP, Papilioninae	Z*
		LL & LR: Monarch, <i>Danaus plexippus</i> L. ♀	NYM, Danainae	Z*
		UR: D'Urville's Birdwing, <i>Troides priamus urvillianus</i> Guérin-Ménéville	PAP, Papilioninae	
a	500fr	Tree Nymph, <i>Idea lynceus</i> Drury	NYM, Danainae	A*
b	500fr	<i>Dactyloceras lucina</i> Drury	BRA, Dactylocerinae	A*
c	1800fr	Camille Saint-Saens (1835-1921)		R
	Margin	Top-L: <i>Delias hallstromi</i> Sanford & Bennett	PIE, Pierinae	Z*
		ML: <i>Oleria tigilla</i> Weymer	NYM, Danainae	Z*
		Top-R: Owl Moth, <i>Brahmaea wallichii</i> Gray	BRA, Brahmaeinae	Z*
		MR: <i>Delias bornemanni</i> Ribbe	PIE, Pierinae	Z*
		LR: <i>Pseudoscada florula aureola</i> Bates	NYM, Danainae	Z*
SS	1800fr	Camille Saint-Saens (1835-1921)		R
	Margin	UL: Owl Moth, <i>Brahmaea wallichii</i> Gray	BRA, Brahmaeinae	Z*
		Top & MR: <i>Pseudoscada florula aureola</i> Bates	NYM, Danainae	Z*
		UR: <i>Oleria tigilla</i> Weymer	NYM, Danainae	Z*
		LR: Croesus Birdwing, <i>Troides croesus</i> Wallace	PAP, Papilioninae	Z*
a	500fr	Owl Moth, <i>Brahmaea wallichii</i> Gray	BRA, Brahmaeinae	A*
b	500fr	Postman, <i>Heliconius melpomene</i> L.	NYM, Heliconiinae	A*
c	1800fr	Vladimir Nabokov (1899-1977)		R
	Margin	Top: U/I BUTTERFLY	Nymphalidae	U Z
		UL: Owl Butterfly, <i>Caligo idomeneus</i> L.	NYM, Morphinae	Z*
		ML: <i>Pseudoscada florula aureola</i> Bates	NYM, Danainae	Z*
		LL: Painted or Vine Sphinx, <i>Eumorpha fasciatus</i> Sulzer	SPH, Macroglossinae	Z*
		UR: <i>Vanessula milca</i> Hewitson	NYM, Nymphalinae	Z*
		MR: Red Anartia, <i>Anartia amathea</i> L.	NYM, Nymphalinae	Z*
		LR: U/I MOTH		U Z
SS	1800fr	Vladimir Nabokov (1899-1977)		R
	Margin	UL: Blue Pansy, <i>Junonia oenone</i> L.	NYM, Nymphalinae	Z*
		UML: <i>Vanessula milca</i> Hewitson	NYM, Nymphalinae	Z*
		LML: Owl Butterfly, <i>Caligo idomeneus</i> L.	NYM, Morphinae	Z*
		LL: Banded Sphinx, <i>Eumorpha fasciatus</i> Sulzer	SPH, Macroglossinae	Z*
		Ctr & UR: <i>Pseudoscada florula aureola</i> Bates	NYM, Danainae	Z*
		UMR: Croesus Birdwing, <i>Troides croesus</i> Wallace	PAP, Papilioninae	Z*
		LMR: Red Anartia, <i>Anartia amathea</i> L.	NYM, Nymphalinae	Z*
		LR: U/I MOTH		U Z
a	500fr	<i>Semomesia capanea</i> Cramer	RIO, Riodinidae	A*
b	500fr	<i>Hyphilaria parthenis</i> Westwood	RIO, Riodininae	A*
c	1800fr	Jean-Baptiste Alphonse Déchauffour de Boisduval (1799-1879)		R
	Margins show 10 Lepidoptera ordered down L, across top, & down R			
		L: Peacock Pansy, <i>Junonia almana</i> L.	NYM, Nymphalinae	Z*
		L: <i>Automeris</i> sp.	SAT, Hemileucinae	Z*
		L: Cabbage White, <i>Pieris rapae</i> L.	PIE, Pierinae	Z*
		L: U/I BUTTERFLY		U Z

MALI (continued)

	T: U/I MOTH		U Z
	T: <i>Brahmaea christophi</i> Staudinger	BRA, Brahmaeinae	Z*
	T: Cabbage White, <i>Pieris rapae</i> L.	PIE, Pierinae	Z*
	R: Yellow Gorgon, <i>Meandrusa payeni</i> Boisduval	PAP, Papilioninae	Z*
	R: <i>Automeris</i> sp.	SAT, Hemileucinae	Z*
	R: Peacock, <i>Nymphalis io</i> L.	NYM, Nymphalinae	Z*
	SS 1800fr Jean-Baptiste Alphonse Déchauffour de Boisduval (1799-1879)		
	Margins show 13 Lepidoptera ordered down L & down R		
	L: U/I BUTTERFLY		U Z
	L: Same		U Z
	L: Cabbage White, <i>Pieris rapae</i> L.	PIE, Pierinae	Z*
	L: <i>Automeris</i> sp.	SAT, Hemileucinae	Z*
	L: <i>Brahmaea christophi</i> Staudinger	BRA, Brahmaeinae	Z*
	L: U/I MOTH		U Z
	L: Peacock, <i>Nymphalis io</i> L.	NYM, Nymphalinae	Z*
	R: <i>Automeris</i> sp.	SAT, Hemileucinae	Z*
	R: Like 1 & 2		U Z
	R: Peacock, <i>Nymphalis io</i> L.	NYM, Nymphalinae	Z*
	R: Cabbage White, <i>Pieris rapae</i> L.	PIE, Pierinae	Z*
	R: Yellow Gorgon, <i>Meandrusa payeni</i> Boisduval	PAP, Papilioninae	Z*
	R: Peacock Pansy, <i>Junonia almana</i> L.	NYM, Nymphalinae	Z*
	2014 (Stamperija) (2ea MS of 4)		
a	750fr Pearl-Bordered Fritillary, <i>Boloria euphrosyne</i> L.	NYM, Heliconiinae	A*
b	750fr Northern Brown Argus, <i>Aricia artaxerxes</i> Fabr.	LYC, Polyommatainae	A*
c	750fr Marsh Fritillary, <i>Euphydryas aurinia</i> Rottemburg	NYM, Heliconiinae	A*
d	750fr Adonis Blue, <i>Polyommatus bellargus</i> Rottemburg	LYC, Polyommatainae	A*
a	750fr Painted Lady, <i>Vanessa cardui</i> L.	NYM, Nymphalinae	A*
b	750fr Brown Hairstreak, <i>Thecla betulae</i> L.	LYC, Theclinae	A*
c	750fr Grizzled Skipper, <i>Pyrgus malvae</i> L.	HES, Pyrginae	A*
d	750fr Purple Emperor, <i>Apatura iris</i> L.	NYM, Apaturinae	A*
	2014 (Butterflies & Orchids) (Stamperija)		
a	1000fr Atlas Moth, <i>Attacus atlas</i> L.	SAT, Saturniinae	
	NIGER		
	2015 February 25 (Butterflies) (Stamperija) (MS of 4 & SS of 1)		
a	750fr Plain Tiger, <i>Danaus chrysippus</i> L.	NYM, Danainae	A*
b	750fr American Snout, <i>Libytheana carinenta</i> Cramer	NYM, Libytheinae	A*
c	750fr Clipper, <i>Parthenos sylvia</i> Cramer	NYM, Limenitidinae	A*
d	750fr Duke of Burgundy, <i>Hamearis lucina</i> L.	Riodinidae	A*
	Margin UR: U/I BUTTERFLY	PIE, Pierinae	U Z
	SS 2500fr Common Jezebel, <i>Delias eucharis</i> Drury	PIE, Pierinae	A*
	Margin UL: Striped Blue Crow, <i>Euploea mulciber</i> Cramer	NYM, Danainae	Z*
	LL: Cabbage White, <i>Pieris rapae</i> L. (Cap: <i>Cotias croceus</i>)	PIE, Pierinae	Z*
	UR: Monarch, <i>Danaus plexippus</i> L. (larva)	NYM, Danainae	Z*
	LR: Monarch, <i>Danaus plexippus</i> L. (adult) ♀	NYM, Danainae	Z*
	Top: U/I BUTTERFLY		U Z
	2015 February 25 (Orchids) (Stamperija)		
	SS 2500fr Monarch, <i>Danaus plexippus</i> L., in UL & UR margins	NYM, Danainae	
	2015 April 20 (Bees) (Stamperija)		
	4×825fr Western Honeybee, <i>Apis mellifera</i> L.	API, Apinae	
	SS 3000fr Same (also in margin)		

NIGER (continued)**2015 April 20 (Hummingbirds) (Stamperija)**

4×825fr Hummingbird (U/I BUTTERFLY in margin) Lepidoptera

2015 April 20 (Mushrooms & Insects) (Stamperija)

a 825fr Western Honey bee, *Apis mellifera* L. API, Apinae
 b 825fr U/I BUTTERFLY Lepidoptera
 c 825fr U/I BEETLE Coleoptera
 d 825fr U/I BUTTERFLY Lepidoptera
 3000fr Margin: Pipevine Swallowtail, *Battus philenor* L. PAP, Papilioninae

2015 April 20 (Butterflies) (Stamperija) (MS of 4 & SS of 1)

a 825fr Reverdin's Blue, *Plebejus argyrognomon* Bergsträsser LYC, Polyommatae A*
 b 825fr Orange Tip, *Anthocharis cardamines* L. (also in margin) PIE, Pierinae A*
 c 825fr Small Green Awlet, *Bibasis amara* Moore HES, Coeliadinae A*
 d 825fr Southern Festoon, *Zerynthia polyxena* Denis & Schiffermüller PAP, Parnassiinae A*
 SS 3000fr Amanda's Blue, *Polyommatus amandus* Schneider LYC, Polyommatae A*
 Margin UR: Puss Moth, *Cerura vinula* L. (larva) NOT, Stauropinae Z*
 LR: Large Tree Nymph, *Idea leuconoe* Erichson NYM, Danainae Z*

ST. THOMAS & PRINCE ISLANDS 2015 March 16 (Taipei 2015) (Stamperija)

a 15000d Common Fivering, *Ypthima baldus* Fabr. NYM, Satyrinae A*
 b 15000d Indian Awlking, *Choraspes benjamini* Guérin-Ménéville HES, Coeliadinae A*
 c 15000d *Daimio tethys* Ménétries HES, Pyrginae A*
 d 15000d Painted Lady, *Vanessa cardui* L. NYM, Nymphalinae A*
 MS of 4 is cut to shape of & shows *Vanessa cardui* L. NYM, Nymphalinae Z*
 SS 38000d Old World Swallowtail, *Papilio machaon* L. ♀ PAP, Papilioninae A*
 SS is cut to shape of & shows *Papilio machaon* L. PAP, Papilioninae Z*

SOLOMON ISLANDS**2014 November 28 (Butterflies) (Stamperija) (MS of 4 & SS of 1)**

a \$7 Postman, *Heliconius melpomene* L. NYM, Heliconiinae A*
 b \$7 Southern Dogface, *Zerene cesonia* Stoll PIE, Coliadinae A*
 c \$7 Viceroy, *Limenitis archippus* Cramer NYM, Limenitidinae A*
 d \$7 Garden Tiger Moth, *Arctia caja* L. ARC, Arctiinae A*
 Margin 2ea Eastern Tiger Swallowtail, *Papilio glaucus* L. PAP, Papilioninae Z*
 SS \$35 Blue Morpho, *Morpho menelaus* L. NYM, Morphinae A*
 Margin Saturn, *Zeuxidia amethystus* Butler ♂ NYM, Morphinae Z*

Here is the annual report on insect new issues. In calendar 2014, we had about an average number of new stamps, many fewer than in 2013. Locals and known illegal issues are not included. The 19-year total is 8738.

1996	~400 stamps	2004	~270 stamps	2012	297 stamps
1997	~595 stamps	2005	~340 stamps	2013	471 stamps
1998	~625 stamps	2006	~315 stamps	2014	314 stamps
1999	~665 stamps	2007	~310 stamps		
2000	~825 stamps	2008	~185 stamps		
2001	~955 stamps	2009	~235 stamps		
2002	~610 stamps	2010	~265 stamps		
2003	~455 stamps	2011	~275 stamps		
Unlisted (Stamperija)					
2013	321 stamps	2014	331 stamps		

NEW ZEALAND COLOR MISSING ERRORS

Jack R. Congrove, BU1424

[Ed. Note: Because this article is about missing colors, if you are reading the black and white print edition of the journal, you may want to view the color version of this article that you will find on the Biology Unit website, <http://www.biophilately.org>.]

On 2 September 1970, New Zealand issued a set of six low value definitive stamps depicting butterflies and moths (Sc#438–43) with the following denominations: ½c, 1c, 2c, 2½c, 3c, and 4c. The three lower denominations were designed by Enid Hunter and the three higher denominations were designed by Eileen Mayo.

All were printed by Harrison and Sons in England in sheets of 200 on chalk surface paper with multiple NZ and star watermark. They were perforated 13½×13. The 1c, 3c, and 4c stamps also exist with the watermark sideways.

On 7 September 1973, the 1c, 2c, 3c, and 4c stamps were reissued on unwatermarked paper (Sc#533–37).

During production, the 1c, 2c, and 4c stamps ended up with missing colors and some of these fluttered into the hands of the public. That missing colors occurred is not surprising since the photogravure printing for each of these stamps required multiple colors, five of them in the case of the 4c stamp.

The Scott Catalogue does not list all of these missing color errors, but the Stanley Gibbons Catalogue does. This article will focus only on the 4c stamp because it has the most varieties (see the cover). It depicts a Puriri Moth (*Charagia virescens*) found exclusively on the North Island. Its larvae are a pest of wineberry, manuka, kamahi, puriri, and other trees.



Normal copy
Sc#443/537



Dark Green omitted
Sc#443a/SG1011e

This stamp was printed with orange-yellow, light green, blue, purple-brown, and dark green colors. The most common instance of missing color is the dark green used to print the wing veins of the moth. It is possible to find this stamp for under \$100. In fact, I have in my collection a used copy on cover. This error occurred on both the watermarked and unwatermarked stamps. The other errors exist only on unwatermarked versions.

The remaining color missing errors catalog for several hundred dollars, if you can even find them. I am still searching for some. The most striking example is the purple-brown omitted stamp. Its conspicuous appearance makes me wonder how it ever got released.



Purple-Brown omitted
SG1011b

An example of a missing color error exists for each of the five colors used for this stamp, but curiously there are no examples where two or more colors are missing.



Orange-Yellow omitted
SG1011c



Blue omitted
SG1011d

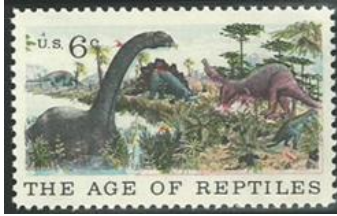


Light Green omitted
SG1011f



Dark Green inverted
SG1011a

There also exists a stamp with all five colors, but the dark green color is inverted. It is only found on the booklet pane of 3+3 labels (Sc#533a). There are also many examples of color shifts that, although not errors, result in eye-catching items.



PALEONTOLOGY

Editor

Michael Kogan, BU1863

New Listings



Scott#	Denom	Common Name/Scientific Name	Family	Code
ARGENTINA 2015 March 9 (Argentina in Antarctica)				
	\$6	<i>Antarctopelta oliveroi</i>	†Nodosauridae	A
CANADA 2015 April 13 (Dinosaurs of Canada) (MS of 5 & Bklt pane 10)				
The booklet stamps have the holography, but not the embossing, which makes them detectably different.				
	(85c)	<i>Tylosaurus peminensis</i> (not a dinosaur, but a mosasaur)	Mosasauridae	A
	(85c)	<i>Chasmosaurus belli</i>	†Ceratopsidae	A
	(85c)	<i>Tyrannosaurus rex</i>	†Tyrannosauridae	A
	(85c)	<i>Ornithomimus edmontonicus</i>	†Ornithomimidae	A
	(85c)	<i>Euoplocephalus tutus</i>	†Ankylosauridae	A
GUINEA 2015 March 20 (Flying Dinosaurs) (MS of 4 & SS of 1) [1]				
Note: Flying Dinosaurs is a wrong term as per definition dinosaurs are terrestrial reptiles. Moreover, the depicted creatures look like dragons from an Avatar film.				
a	10000fr	<i>Dimorphodon macronyx</i>	†Dimorphodontidae	A
b	10000fr	<i>Sordes pilosus</i>	Clade: †Breviquartossa	A
c	15000fr	<i>Anurognathus ammoni</i>	†Anurognathidae	A
d	15000fr	<i>Cearadactylus atrox</i>	†Cearadactylidae	A
	Margin	Top: Silhouettes apparently of the depicted species		U Z
	SS 40000fr	Top: <i>Tapejara wellnhoferi</i>	†Tapejaridae	A
		Bot: <i>Peteinosaurus zambellii</i>	†Dimorphodontidae?	A
	Margin	UL & Bot: <i>Quetzalcoatlus northropi</i>	†Azhdarchidae	Z
		UR: <i>Tapejara wellnhoferi</i>	†Tapejaridae	Z
		LL: <i>Rahonavis ostromi</i>	†Dromaeosauridae	Z
GUINEA BISSAU 2015 February 2 (Dinosaurs) (MS of 4 & SS of 1) [1]				
a	900fr	<i>Brachiosaurus altithorax</i>	†Brachiosauridae	A
b	900fr	<i>Edmontonia rugosidens</i>	†Nodosauridae	A
c	900fr	<i>Centrosaurus apertus</i>	†Ceratopsidae	A
d	900fr	<i>Monolophosaurus jiangi</i>	Clade: Tetanurae	A
	Margin	UL: <i>Sordes pilosus</i>	Clade: †Breviquartossa	Z
		UR: <i>Triceratops horridus</i>	†Ceratopsidae	Z
	SS 3000fr	<i>Pachycephalosaurus wyomingensis</i>	†Pachycephalosauridae	A
	Margin	UL: <i>Rhamphorhynchus muensteri</i>	†Rhamphorhynchidae	Z
		Bot: <i>Kentrosaurus aethiopicus</i>	†Stegosauridae	Z
2015 March 25 (Prehistoric Humans/Mammoths)(MS of 4 & SS of 1)[1]				
a	800fr	<i>Homo habilis</i>	Hominidae	B
		Mammoths, <i>Mammuthus primigenius</i>	Elephantidae	B
b	800fr	Mammoths, <i>Mammuthus primigenius</i>	Elephantidae	A
c	800fr	<i>Homo erectus</i>	Hominidae	A
d	800fr	<i>Homo habilis</i>	Hominidae	B
		Mammoth, <i>Mammuthus primigenius</i>	Elephantidae	B

GUINEA BISSAU (continued)

SS 2400fr	<i>Homo habilis</i>	Hominidae	A
Margin	LL: <i>Homo neanderthalensis</i>	Hominidae	Z
	LR: <i>Homo neanderthalensis</i> (skull)	Hominidae	Z
	UR: Mastodons, <i>Mammut americanum</i>	†Mammutidae	Z

LATVIA**2015 February 20** (Latvian Museum of Natural History)

Fossil and reconstruction of a prehistoric Devonian placoderm fish.

71c	<i>Asterolepis ornata</i>	†Asterolepididae	A
-----	---------------------------	------------------	---

MARSHALL ISLANDS**2015 January 15** (Dinosaur Bones)

These stamps were planned for issue on 15.01.2015, but appeared in official online store at the beginning of March. First time seen in Internet auction at the end of February. Actual issue date is in doubt.

34c	<i>Triceratops</i> (skeleton)	†Ceratopsidae	A
34c	<i>Stegosaurus</i> (skeleton)	†Stegosauridae	A
34c	<i>Protoceratops</i> (skeleton)	†Protoceratopsidae	A
34c	<i>Tyrannosaurus</i> (skeleton)	†Tyrannosauridae	A

NEVIS**2015 January 21** (Prehistoric Mammals) (2ea MS of 4 & SS of 1) [1]

Each sheet has unidentified animals in the background on the margins.

a	\$3.25	<i>Daeodon</i>	†Entelodontidae	A
b	\$3.25	<i>Pseudaelurus</i>	Felidae	A
c	\$3.25	<i>Stenomylus</i>	Camelidae	A
d	\$3.25	<i>Amebelodon</i>	†Gomphotheriidae	A
	SS \$10	Saber-toothed Cat	Felidae	U A
a	\$3.25	<i>Megacerops</i>	†Brontotheriidae	A
b	\$3.25	<i>Synthetoceras</i>	†Protoceratidae	A
c	\$3.25	<i>Merychys</i>	†Merycoidodontidae	A
d	\$3.25	<i>Prosthennops</i>	Tayassuidae	A
	SS \$10	Woolly Mammoth, <i>Mammuthus primigenius</i>	Elephantidae	A

NIGER**2015 February 25** (Dinosaurs) (MS of 4 & SS of 1) [1]

a	750fr	<i>Parasaurolophus</i>	†Hadrosauridae	A
b	750fr	<i>Triceratops</i>	†Ceratopsidae	A
c	750fr	<i>Tyrannosaurus</i>	†Tyrannosauridae	A
d	750fr	<i>Dilophosaurus</i>	Clade: Neotheropoda	A
	SS 2500fr	<i>Parasaurolophus</i>	†Hadrosauridae	A
Margin		UL: <i>Tyrannosaurus rex</i>	†Tyrannosauridae	Z
		LL: <i>Gorgosaurus libratus</i>	†Tyrannosauridae	Z
		R: <i>Eoraptor lunensis</i>	Order: Saurischia	Z

2015 March 20 (Extinct Animals) (MS of 4 & SS of 1) [1]

a	825fr	Mammoth, <i>Mammuthus primigenius</i>	Elephantidae	A
Margin		Ctr: <i>Smilodon populator</i>	Felidae	Z
	SS 3000fr	UL & LR: Irish Elk, <i>Megaloceros giganteus</i>	Cervidae	Z

2015 April 20 (Prehistoric Marine Animals) (MS of 4 & SS of 1) [1]

a	825fr	<i>Mosasaurus hoffmannii</i>	†Mosasauridae	A
b	825fr	<i>Tylosaurus proriger</i>	†Mosasauridae	A
c	825fr	<i>Liopleurodon ferox</i>	†Pliosauridae	A
d	825fr	<i>Carcharodon megalodon</i> (also in margin of SS)	†Otodontidae	A
	SS 3000fr	<i>Kronosaurus queenslandicus</i>	†Pliosauridae	A
Margin		UL: <i>Pterodactylus antiquus</i>	†Pterodactylidae	Z

PORTUGAL**2015 May 4** (Dinosaurs) (3 ATM/Frama labels)

Each label can have up to seven predefined values: 45c, 60c, 62c, 72c, 80c, and 55c & €2.35 with “Correio Azul” (priority mail) text

(v)	<i>Torvosaurus gurneyi</i>	†Megalosauridae	A
(v)	<i>Ceratosaurus</i>	†Ceratosauridae	A
(v)	<i>Allosaurus europaeus</i>	†Allosauridae	A

RUSSIA**2015 February 10** (Lena Pillars) (SS of 1)

50r	Lena Pillars fossil discovery site		R
-----	------------------------------------	--	---

SINGAPORE**2015 April 18** (Lee Kong Chian Natural History Museum) (Set of 4)

(30c)	U/I Sauropod skeleton		U
-------	-----------------------	--	---

SPAIN**2015 May 4** (Dinosaurs)

Very expensive 3D cartoon like stamps.

€2	<i>Triceratops</i>	†Ceratopsidae	A
€2	<i>Titanosaurus</i>	†Titanosauridae	A
€2	<i>Diplodocus</i>	†Diplodocidae	A
€2	<i>Ankylosaurus</i>	†Ankylosauridae	A

SWITZERLAND**2015 March 5** (Ammonite) (SS of 1)

2fr	Ammonite, <i>Colombiceras</i> (fossil and reconstruction)	Ammonoidea	A
-----	---	------------	---

TOGO**2015 April 22** (Dinosaurs) (MS of 4 & SS of 1) [1]

a	750fr	<i>Camarasaurus</i>	†Camarasauridae	A
b	750fr	<i>Gastonia burgei</i>	†Nodosauridae	A
c	750fr	<i>Stegosaurus</i>	†Stegosauridae	A
d	750fr	<i>Carnotaurus sastrei</i>	†Abelisauridae	A
	Margin	LL: <i>Brachiosaurus</i>	†Brachiosauridae	Z
		UL: <i>Dsungaripterus weii</i>	†Dsungaripteridae	Z
	SS 2500fr	<i>Tyrannosaurus rex</i>	†Tyrannosauridae	A
	Margin	<i>Triceratops</i>	†Ceratopsidae	Z
		<i>Pteranodon</i>	†Pteranodontidae	Z

Personalized Stamps**FRANCE****2014 December 9** (Saturnin Garimond-Paleontologist) (Priority Letter)

	<i>Torvosaurus?</i> (with Garimond portrait)	†Megalosauridae	B
--	--	-----------------	---

SLOVENIA**2014 June 21** (Geopark Idria) (Domestic letter rate)

A	<i>Triadomegalodon idrianus</i>	†Megalodontidae	
---	---------------------------------	-----------------	--

Local Stamps

The stamps in this section are issued by unrecognized territories and can be used for internal mail only. According to FIP regulations, issues of countries not recognized by the Universal Postal Union are not allowed to be used at exhibitions organized or sponsored by FIP. The FIP recommends collectors avoid these stamps in their collections.

TRANSNISTRIA**2015 March 3** (Archaeology of Transnistria)

Transnistria (also called Trans-Dniestr or Transdnistria) is a breakaway state located mostly on a strip of land between the River Dniester and the eastern Moldovan border with Ukraine. It declared independence in 1990, but is unrecognized by any United Nations member state. Transnistria is designated by the Republic of Moldova as the Transnistria autonomous territorial unit with special legal status. The first Transnistria stamp appeared on December 31, 1993. Since then it has typically issued between three and five different series of stamps per year. The name is given only in Cyrillic, as “ПОЧТА ПМР” (POST OF PMR, with PMR standing for Pridnestrovian Moldavian Republic). The stamps of Transnistria are valid only for domestic service within Transnistria. International mail and mail to the rest of Moldova requires Moldovan stamps.

Palaeolithic History stamps of 1996 overprinted "Archaeology of Transnistria" (in Cyrillic) in metallic gold and silver. The set consists of five stamps depicting the life of Palaeolithic humans and objects found during archaeological excavations in Transnistria near the village Rashkov and in a grotto near the village Vyhvatintsy. The pair of Д stamps make a composite picture.

А	Siliceous scraper, people making siliceous instruments	R
Б	Object from antler, picking a fruits	R
В	Siliceous scraper, work up a skin	R
Д	Siliceous edge, hunting	R
Д	Bone edge, hunting	R

TRANSNISTRIA **2015 March 28** (Archaeology of Transnistria)

Self-adhesive, imperforate Palaeolithic Animals stamps of 2005 overprinted "Archaeology of Transnistria" (in Cyrillic) in metallic gold and silver.

А	Elephant	R
Б	Deer	R
Д	Rhinoceros	R
К	Lion	R
Г	Zebra	R

Postmarks

AUSTRALIA **2014 November 28 (?)**

Muttaborrasaurus fossil

Future Issues

2015.09.17 Belgium: s/a booklet with 10 dinosaur stamps

2015.05.05 Cuba: Dinosaurs

Notes:

[1] Commercial issue: Stamps issued only for sale to collectors, not used for postal purpose. Stamps of countries that issued excessive or too expensive stamps. Not recommended for serious collectors.

Images and detailed description of all stamps mentioned above can be seen on the following website:
<http://www.paleophilatelie.eu/year/current.html>.

BIOLOGY REFERENCE WEBSITES

This section contains a listing of web links to on-line references relating to biology topics on stamps and general philatelic information. We are providing this information to assist members in research and not to endorse the sites listed in any way. If readers know of, or use other useful sites, please send the links to your editor and we will include them in future editions. New entries since the last publication are indicated with an asterisk (*).

STAMP ISSUES

Catawiki. Listings and illustrations of stamps for sale by topic for every theme from A to Z.

<http://www.catawiki.com/catalog/stamps/100283-themes-topics>

Cyber Stamps. On-line postage stamp catalogue of worldwide topical issues.

<http://www.cyberstamps.com>

Delcampe. Worldwide listings and illustrations of stamps for sale.

<http://stamps.delcampe.net/page/category/cat,-1,language,E.html>

Neofila. Modern issues from Russia, Eastern Europe, and Baltic States. Also includes some African countries.

<http://www.neofila.com/>

Stamp Collection. On-line postage stamp catalogue of worldwide issues. Includes production information.

<http://colnect.com/en/stamps/countries>

Stamperija. Listings and illustrations of thematic issues from countries located in Africa, Asia, and Oceania produced by Stamperija, Ltd., under contract to several postal administrations. Requires login.

<http://www.stamperija.eu/index.php>

Stamp World. Listings and illustrations of issues from all countries by year. Includes production information. Requires login.

<http://www.stampworld.com/en/maps/Europe/>

Stanley Gibbons. Searchable on-line stamp catalogue from Stanley Gibbons.

<http://www.allworldstamps.com/>

Zillions of Stamps. Worldwide listings and illustrations of stamps for sale.

<http://www.zillionsofstamps.com/>

GENERAL

Collect 4 All. Listings of stamps for sale by country and theme. Includes spectrum of animal stamps.

<http://www.collect4all.com/>

Fauna-Stamps. Listings of stamps for sale (mainly new issues) on all sorts of biological themes including Cats, Dogs, Horses, Birds, Butterflies, Paleontology, Flora, and WWF animal stamps.

<http://www.fauna-stamps.com/>

Tree of Life Web Project. Worldwide collaborative effort to map the genome of every organism on earth and to establish their relationships to one another.

<http://www.tolweb.org/tree>

Zip Code Zoo. Links to taxonomic identification for all areas of biology including both zoology and botany.

<http://zipcodezoo.com/>

BOTANY

Fungal Biodiversity Center. Dutch site under the Royal Netherlands Academy of Science and Arts dealing with the taxonomy and evolution of fungi. Includes searchable taxonomic databases.

<http://www.cbs.knaw.nl/>

Garden Guides. Replacement site for *www.botany.com*. All kinds of information about plants including cultivation. Listings by common name or scientific name. Grouped by plant types.

<http://www.gardenguides.com/>

International Association for Plant Taxonomy. Links for the standard international codes on taxonomy and nomenclature for algae, fungi, and plants.

<http://www.iapt-taxon.org/nomen/main.php>

Lichens of North America. Many photos of lichens and links to related sites.

<http://www.lichen.com/>

ENTOMOLOGY:

Antbase. On-line databases maintained by the American Museum of Natural History and Ohio State University listing all the ant species of the world.

<http://www.antbase.org/index.htm>

Australian National Insect Collection. Listings of Common and Scientific Names, systematic listing, and author abbreviations.

<http://www.ces.csiro.au/aicn/intro.htm>

Cerambycidae. Species listing and illustrations of Cerambycidae of the West Palearctic Region organized by subfamily and tribe.

<http://www.cerambyx.uochb.cz/>

Cercopoidea Organised On Line. Taxonomic database operated under the auspices of *Université Pierre-et-Marie-Curie* in Paris and dedicated to the insects Cercopoidea, which belong to the Hemiptera order.

<http://rameau.snv.jussieu.fr/cool/index.php>

Entomological Data Information System. Internet links to many worldwide websites dealing with biology and ecology, especially Lepidoptera.

<http://www.insects-online.de/linkfram.htm>

FUNET. Finnish university share network site containing updated taxonomic listings for insects, especially Lepidoptera. It also has limited listings for mammals, birds, and plants.

<http://www.nic.funet.fi/pub/sci/bio/life/intro.html>

International Odonata Research Institute. Information about dragonflies and damselflies, including listings by geographical area, taxonomy, and links to related sites.

<http://www.iodonata.net/>

Natural History Museum. British site containing Lepidoptera generic names and type species listings.

<http://www.nhm.ac.uk/research-curation/research/projects/butmoth/>

Odonata Society. German site containing listings of Odonata species found in Europe (in German).

<http://www.libellula.org/>

World Bee Genera. UC Riverside site containing listing of all bee generic names and synonyms by family and subfamily current as of September 2007.

<http://cache.ucr.edu/~heraty/beepage.html>

HERPETOLOGY:

AmphibiaWeb. Provides access to information on amphibian declines, conservation, natural history, and taxonomy. Includes an on-line database of species and links to many related sites.

<http://amphibiaweb.org/index.html>

The Reptile Database. Uetz, P. (Ed.). Taxonomic database that provides basic information about all living reptile species, such as turtles, snakes, lizards, and crocodiles, as well as tuataras and amphisbaenians, but does not include dinosaurs.

<http://reptile-database.reptarium.cz/>

World-Wide List of Turtles and Tortoises on Stamps. This on-line listing was produced by Donald N. Riemer, a former member of the Biology Unit and contributor to this journal, who passed away in June 2012. The site contains a checklist of stamps by country along with appendixes listing labels, cinderellas, turtle look-alike stamps, and post offices with “turtle” or “tortoise” in their name.

<http://www.personal.psu.edu/crr2/turtstmp/>

ICHTHYOLOGY

FishBase. A searchable database developed at the WorldFish Center in Taiwan in collaboration with the Food and Agriculture Organization of the United Nations. Contains all you ever wanted to know about fishes.

http://fishbase.sinica.edu.tw/home_tw.htm

MAMMALS

Feline Philately Homepage. All sorts of cat stamps, postmarks, and related articles.

<http://www.catstamps.org/>

Mammal Species of the World. On-line database of worldwide mammal species hosted by the Smithsonian Museum of Natural History.

<http://www.vertebrates.si.edu/msw/mswcfapp/msw/index.cfm>

ORNITHOLOGY

Birds of the World. All sorts of bird stamps by country and species, including new issues.

<http://www.bird-stamps.org/>

Birds on Stamps. Listings of local, unofficial, and cinderella issues featuring birds—last updated in 2007.

<http://www.birdstamp.com/>

Theme Birds on Stamps. All sorts of bird stamps by country and species, including new issues.

<http://www.birdtheme.org/>

PALEONTOLOGY:

Dinosaur Illustrations. Galleries of dinosaur illustrations by species. Includes links to paleontology stamp sites and other related sites.

<http://www.search4dinosaurs.com/>

Paleophilatelie. Catalogue of Paleontology related philatelic items, such as paleontologists, fossils, prehistoric animals, dinosaurs, early man, and museums on official post stamps, envelopes, and post cards. Contains links to related news items and sites.

<http://www.paleophilatelie.eu/index.html>

GLOSSARY OF TERMS

This section lists the definitions of acronyms, abbreviations, and code letters used throughout this journal. This listing does not include abbreviations used for the name of a taxonomic author, or commonly used symbols.

Checklist Codes:

Br	Branch	A	Subject is the primary design element
Fl	Flowers (with or without other plant parts)	B	Subject is only part of the main design
Fr	Fruit (including seeds, nuts, grains, etc.)	C	Subject is a minor representation
FrV	Grain head with sheaf or stalk	G	Subject is a generalized depiction
L	Lichen	R	Related subject (e.g., scientist, equipment)
M	Mushroom or fungus	S	Subject is a stylized or symbolic depiction
T	Trees (without flowers or fruit)	U	Subject is unidentified or unidentifiable
V	Various (vines, vegetables, roots, leaves, etc.)	X	Subject is a lookalike (e.g., mushroom cloud)
Wr	Wreath	Z	Subject is in the margin or selva
Wr*	Head wreath (or chaplet)	*	Subject depicted in natural colors

Acronyms and Abbreviations:

AAPE	American Association of Philatelic Exhibitors	ovpt	overprinted
anniv	anniversary	perf	perforated
APC	American Philatelic Center (Bellefonte, PA)	photo	photogravure
APS	American Philatelic Society	ptg	painting or artwork
ATA	American Topical Association	R	right position indicator
bkl	booklet	s/a	self-adhesive
Cap	captioned	Sc#	Scott Catalogue number
CTO	canceled to order	s-o-s	stamp on stamp
CTR	center position indicator	sp.	species
DS	deluxe sheet	SS	souvenir sheet
Ed.	Editor	ssp.	sub-species
Expo	Exposition	s/t	se-tenant
horiz	horizontal orientation	surch	surcharged
imperf	imperfurate	UL	upper left position indicator
Intl.	International	unwmk	un-watermarked
L	left position indicator	UPU	Universal Postal Union
litho	lithography	UR	upper right position indicator
LL	lower left position indicator	US	United States
LR	lower right position indicator	USPOD	United States Post Office Department
mm	millimeter	USPS	United States Postal Service
MS	miniature sheet	var.	variety
ML	middle left position indicator	vert	vertical orientation
MR	middle right position indicator	Vol	Volume
N/A	not applicable (or not available)	wmk	watermarked
nd	non-denominated	WWF	World Wildlife Federation
NTSS	National Topical Stamp Show	Yv#	Yvert & Tellier Catalog number
NWF	National Wildlife Federation		