

BIOPHILATELY

OFFICIAL JOURNAL OF THE BIOLOGY UNIT OF ATA

SEPTEMBER 2014

VOLUME 63, NUMBER 3

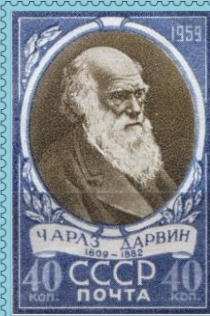
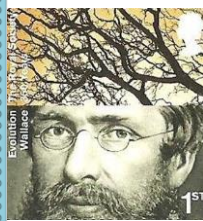
“If it’s your job to eat a frog, it’s best to do it first thing in the morning.” —Mark Twain



Vladimir Kachan

World of Butterflies and Moths

More Inside >>



IN THIS ISSUE

From the Editor’s Desk	141
President’s Message	142
Secretary-Treasurer’s Corner	143
Dropped/New Members	144
Letters.....	145
Editors Biographies	145
News of Note.....	146
Closed Albums	149
Glossary.....	202

NEW ISSUES:

Botany – Christopher E. Dahle	161
Fungi – Paul A. Mistretta	172
Mammalia – Michael Prince.....	175
Ornithology – Glenn G. Mertz.....	181
Entomology – Donald Wright, Jr.....	193

ARTICLES & ILLUSTRATIONS:

Amphibian Subjects – Vic Eichler.....	150
NTSS 2014 Report – Jack Congrove	153
World of Butterflies and Moths – Victor Kachan	157
New Plant Ident – Stumpenhaus	171
New Birds in the Philatelic Aviary – Charles E. Braun	189
Biology Reference Websites	200
Membership Listing 2014	203

BIOPHILATELY**Editor**

Jack R. Congrove
P.O. Box 33092, Fort Lewis, WA 98433, USA
jackcongrove@comcast.net

Publisher

Richard Roman
Dick.Roman@SbcGlobal.Net

Associate Editors

Christopher E. Dahle *Botany*
1401 Linmar Dr. NE, Cedar Rapids, IA 52402
chris-dahle@fastermac.net

Dr. Paul A. Mistretta *Fungi*
4148 Commodore Dr., Atlanta, GA 30341
paulmistretta70@gmail.com

Michael J. Prince *Mammalia*
"Dorset," Grove Road, Ash Vale, Aldershot, Hants. U.K.
Michael.Prince@bushinternet.com

Glenn G. Mertz *Ornithology*
625 N. Lafayette St., Allentown, PA 18104
ggmertz@juno.com

Charles E. Braun *New Birds*
7 Winthrop Drive, Aiken, SC 29803
ChuckBraun@aol.com

Kris P. Lindstrom *Ichthyology*
P.O. Box 51008, Pacific Grove, CA 93950
kplind@redshift.com

Ian Hunter *Invertebrate Zoology*
228 7th Ave NE, Calgary, AB Canada T2E 0M7
ighunter@shaw.ca

Donald P. Wright, Jr. *Entomology*
84 Woosamonsa Rd., Pennington, NJ 08534
don.aa2f@verizon.net

Dr. Hans-Peter Schultze *Paleontology*
2001 Vermont, Lawrence, KS 66046
hp1937@ku.edu

BIOLOGY UNIT OF ATA

Alan J. Hanks **President**
34 Seaton Drive, Aurora, ON Canada L4G 2K1

Laurence E. Davidson **Vice-President**
P.O. Box 154, Tobermory, ON Canada N0H 2R0

Christopher E. Dahle **Secretary/Treasurer**
1401 Linmar Dr. NE, Cedar Rapids, IA 52402

Directors

Jack R. Congrove (Washington)
John Pereira (Massachusetts)
Dr. Frederick C. Skvara (New Jersey)
Donald P. Wright, Jr. (New Jersey)

Publicity Director

William Cochran
9/30 William Street, Castlemaine, Victoria
3450 Australia
enquiries@philatelicdatabase.com

Librarian

Mark Reineke
925 Boychuk Drive, Saskatoon, SK Canada S7H 4L6
mikadoate@sasktel.net

Website

www.biophilately.org

The Biology Unit, founded in 1951, is a study unit of the American Topical Association dedicated to the international cooperative study of biological postage stamps and related material.

Back copies of *Biophilately* are available from the Librarian. Copies of separate articles are available at a charge six cents per page. Please contact the individual associate editors if you have queries about the content of their columns.

Send membership enquiries and change of address notices to the Secretary, Chris Dahle, (319) 364-4999. See the following page for dues rates.

The purpose of this journal is to provide members with informative articles dealing with biological topics and to publish listings covering the new **zoological** and **botanical** issues of the world, identified and classified to the best of our ability.

Please send letters, comments on the journal, articles, or new material to the Editor (data above). The Publisher will handle requests for issues from the current year. Contact the Librarian (address above) for copies of all other issues.

NOTE: Please provide a self-addressed envelope with the necessary return postage (or International Reply Coupons, if available) for all enquiries requiring an answer.

The term Scott and Scott Catalogue numbers are trademarks of Amos Philatelics, Inc., dba Scott Publishing Company.

PLEASE NOTE: Material for the next issue should be in the hands of the Editor before 15 November 2014.

FROM THE EDITOR'S DESK

Note there are some changes in the address information for some editors and officers listed on page ii.

Effective at the annual Unit meeting, Lois Herrmann resigned as Unit Director. President Hanks has appointed Mr. John Pereira of Massachusetts (BU1813) as acting Director to fill this vacant position pending a vote by the membership in accordance with Article 4, Section 3a of the Unit Constitution. Accordingly, attached with this edition of the journal you will find a mail-in ballot to enter your vote. Please mark your selection and return the ballot to the Unit Secretary, Chris Dahle, 1401 Linmar Dr. NE, Cedar Rapids, IA 52402, to arrive no later than 15 November 2014.

This issue is without four of our regular New Issues columns. I am still looking for an associate editor to take over the Herpetology column. I was unable to produce it for this issue because I have been busy with preparations for the upcoming SEAPEX show. Dr. Schultze informs me that he had so few new issues for the Paleontology column that he is saving them for inclusion in the next edition. I am unsure about the Ichthyology and Invertebrate columns as I have not received responses from those editors.

In the Secretary-Treasurer's section, you will find a listing of members that we have dropped from the roll for various reasons during the past year. You will also see that we have acquired three new members. Despite the loss of several members, our membership has been increasing over the past two years. Please make it a point to promote the Biology Unit to your local clubs and to other collectors you meet. There is nowhere else collectors interested in the Biology topic can find in a single place, the information we publish in *Biophilately*.

This issue has a few more articles than usual. Partially this is due to the absent regular columns, but also it is an effort to increase the quantity of editorial content and non-checklist information. We recently entered the journal in the ATA Unit publications literature exhibition at NTSS 2014 where it received a Silver award (see page 146). This is gratifying, but as editor I would like to incorporate some of the jury's suggestions for improving our publication and we have always been cited for having many checklists in lieu of more variety since even before I became editor.

This edition begins a four-part article by Vladimir Kachan from Belarus on the world of butterflies and moths. We also have another article from Dr. Vic Eichler on amphibian subjects by well-known authors. In addition, there are two articles about happenings at the National Topical Stamp Show this past June in St. Louis.

I am sad to report the passing of three of our Life Members (see page 149).

Finally, for those of you who can attend, I would like to include a personal plug for our upcoming SEAPEX stamp show, which will be held in Seattle 12–14 September. We will have more than 20 dealers, 144 frames of exhibits, a first day of sale ceremony for the Fort McHenry stamp, and many chapter meetings and presentations. Admission and parking is free. Please come and visit us here in The Great Northwest.

Jack Congrove

DUES RATES (US\$)

Regular membership (US & Canada)	\$20
Overseas membership	\$25
Overseas airmail (add)	\$10
On-line membership	\$15

ADVERTISING RATES

Full page insertion	\$20
Half page insertion	\$10
Quarter page insertion	\$5

Please see the Biology Unit website (www.biophilately.org) for membership applications. Several payment options are available. Send applications and payments payable to the Biology Unit of ATA to: Chris Dahle, 1401 Linmar Drive NE, Cedar Rapids, IA 52402

PRESIDENT'S MESSAGE

Greetings from Ontario! Well, another ATA show has come and gone and, as usual, it was most enjoyable. Since I no longer fly, I drove down to St. Louis, deciding to take two days, as trips in the car seem to get shorter with advancing years. Detroit is a good crossing point to reach Highway 75 heading south, and as I drove through the Ontario countryside, I was struck by the enormous quantity of wind turbines for the electrical grid that could be seen, but only on the south side of the highway until I was close to the border. In my view, they are an ugly addition to the scenery, but they seem to be universal! I ran into a huge thunderstorm south of Toledo and had thoughts on the recent reports of tornados, but the storm cleared after a while. On the following day, Highway 70 was relatively clear all the way to St. Louis. The show hotel was very close to the airport, but was quite comfortable with large rooms and I spent some time helping put up exhibits, which I try to do at every show.

Friday was spent helping out at the ATA table, meeting and greeting old friends and answering questions about ATA. Vera Felts does a superb job as Executive Director and spends most of her time at the show helping potential new members. I took down a large quantity of stamps on and off paper that I had accumulated over the past year to donate to the youth programme and they were happy to get them. Saturday of course brought the Biology Unit meeting at 10 AM and there was a pretty good turnout this year, which you can read about in Chris Dahle's report. There were quite a number of exhibits with a biological connection: "The African Coelacanth," by Susan B. Jones; "A Celebration of the Cockroach," by Jean C. Stout; "Exploring the Evolution of Plants," by Chris Dahle; "The Olive," by Vincent de Luca" and "The Donkey," by Bob Mather. There were also four biology related single frames.

The President's Reception on Friday and the Banquet on Saturday were well attended and most enjoyable. Strangely, the judges "Feedback Forum" on Saturday was not very well attended—most unusual! For those members that have never attended an ATA show, I can heartily recommend putting it on your calendar for 2015 and I hope to see many of you there!

Until next time...

Alan J. Hanks

**Flora &
Fauna**



New issues 🐾 FDCs and Stamps

www.fauna-stamps.com



Philately Company s.r.o.
 Radouňova 2681/24, 155 00, Prague, Czech Republic
 E-mail: info@fauna-stamps.com / Telefon: + (420) 773 133 955

SECRETARY-TREASURER'S CORNER

BIOLOGY UNIT ANNUAL MEETING

There was a crowd of 13 members and three guests at the Biology Unit's annual meeting held at the National Topical Stamp Show in St. Louis on Saturday, 28 June 2014, at 10:00 AM. President Alan Hanks called the meeting to order and welcomed all attendees. Jack Congrove had prepared 25-year membership certificates for Mary Pomfret and Paul Freytag. As they were not in attendance, Secretary Chris Dahle was asked to mail them out.

The Secretary reported that there are currently 145 members. Membership forms have been supplied to ATA ambassadors for recruiting at shows. Fred Skvara, working as an ATA ambassador, has been getting extra copies of *Biophilately* to give to prospective members. Editor Jack Congrove, has entered *Biophilately* in all three literature contests during the past year, as well as the in-house ATA literature contest, which was held for the first time at this show. The ATA contest was suggested by Fred Skvara to provide a way for ATA members to see what the various study units are publishing. There used to be a table at the ATA's show where the journals were displayed.

Alan Hanks noted that in the early days many articles in *Biophilately* were submitted by academics, which rarely happens now. Discussion followed about how a literature contest should be structured, with the ATA coming up with criteria that are different from the APS Manual of Judging, mainly because the journal needs to be fun and interesting to members. ATA Board members in attendance said they would bring this up at the Monday morning review of the show.

Dick Roman noted that the new database is on line and is a wonderful resource that Biology collectors should use.

Jack Congrove noted that in compiling the Unit history he found many comments about articles in the journal that were not pertinent. He had a solution for that, which applies to today as it did back then. Let this be an invitation to write your own article!

There was a question about which philatelic libraries are getting *Biophilately*. Jack said the journals submitted for competition are donated to APRL and the Rocky Mountain Philatelic Library. Chris noted that the Postal History Foundation's Peggy Slusser Library is the only one that has a membership in the Biology Unit. It was suggested that the Unit send complimentary copies to all philatelic libraries.

Jack Congrove made a motion that the Biology Unit sponsor the publication of the next Insects Handbook, edited by Don Wright. The cost will be around \$1200. The motion passed unanimously.

Eight of the members at the meeting had an exhibit on the floor at this show. In all, there were 14 exhibits with a Biology connection, which made for stiff competition for the Biology Unit award. Dawn Hamman thanked members of the Unit who have helped her find material for her exhibits. Van Siegling, seeing all the different Biology exhibits, wondered if we could arrange to have an exhibit for each level of the food chain, making sure they were mounted in the correct order. It was noted that thematic exhibits often get downgraded at WSP shows, in spite of restructuring the judging criteria. European judges who evaluate thematic exhibits are expected to have exhibited thematically. This is not the case in the U.S.

Dick Roman thanked the editors for all the work they do for each issue of the journal. Barbara Herbert also commended the editors for their assistance.

Lois Herrmann wondered if more notice could be given for overseas exhibitions like Birdpex. The editor noted that the notice was posted in *Biophilately* as soon as it was available.

Having taken up the entire allotted hour, the meeting was adjourned at 11:00 AM.

Attendees: Bruce Anderson (visitor-IL), Jack Congrove (WA), Larry Davidson (ON), Chris Dahle (IA), Janice Erbach (visitor-KY), Dawn Hamman (FL), Alan Hanks (ON), Jeff Hayward (NY), Barbara Herbert (CA), Lois Herrmann (NM), Susan Jones (IL), Jeff Loush (visitor-KS), Dick Roman (MO), Laurie Ryan (OH), Van Siegling (OH), and Fred Skvara (NJ).



Biology Unit Annual Meeting, St Louis, June 2014

L-R: Van Siegling, Janice Erbach, Larry Davidson, Dawn Hamman, Bruce Anderson (obscured), Dick Roman, Laurie Ryan, Lois Herrmann, Barbara Herbert, Fred Skvara, Susan Jones, Jeff Loush

DROPPED MEMBERS

1806	Barclay Brown, Santa Cruz, CA	1829	Nicholas Richter, Lake Forest, CA
1336	Jose I.R. Collado, Chico, CA	1828	Richard W. Shevlin, New York, NY
1814	Beth Collins, Cottonwood, MN	1816	Gayle Snider, Oklahoma City, OK
1594	Dr. Charles V. Covell, Gainesville, FL	1649	Peg M. Spaete, Stevens Point, WI
1811	Daniel K. Farmer, Attica, MI	1722	Raymond J. Sullivan, Wauwatosa, WI
636	George Griffenhagen, Woodbridge, VA	1826	Steven W. Winegardner, Washington, DC
1523	Mary Pomfret, Hamilton, ON		

NEW MEMBERS

The Biology Unit welcomes the following new members:

1858	Michael Vincent, Oxford, OH	botany (2)
1859	Rebecca Mohr, Manchester, TN	invertebrates, cacti, fungi (2, 7, 9)
1860	Asher B. Davis, Northhampton, MA	reptiles, amphibians (4)

LETTERS

Here is an idea from our Publisher. We would like to get feedback from all members.

“I’ve been helping Vera Felts re: the checklist database. I find there are many listed stamps that have vertebrates, but are not in my database. This may be because I did not start 62 years ago, or missed some issues, or did not care about fish at some time. At any rate, I am likely to update my database from the checklists.

“I’m wondering if that list, sorted by country or by taxonomy might be interesting to our readers. In the other direction, I have biologicals that are missing in the database of checklist, and may help supplement their list. I’m sure our members and certainly our editors have information to supplement the checklists.

“At any rate, I’d like to discuss this situation with you and possibly with the editors at NTSS. Email could start the conversation and get us both thinking.” —Dick Roman

I think it would take up a lot of space in our regular issue. Perhaps we could publish such lists as separate documents or post them on the website. With regard to the ATA checklists, Executive Director, Vera Felts, is looking for people to help with proofreading and verifying the entries. Our members probably are the resident experts, so if you would like to help, please contact Vera (americantopical@msn.com). —Ed.

EDITOR BIOGRAPHIES

This section completes our series of biographical information about our Officers and Editors that we began in the Volume 62, Number 1. The Officers and Editors are all volunteers who devote a considerable amount of time and talent, not to mention.

Dick Roman

[Ed. Note: Dick Roman joined the Biology Unit in 1978. He became our Publisher in 2011. The Publisher’s duties include reproducing the hard copies of the master electronic file for mailing to our members who want a printed version. He must then prepare them for mailing and mail them to the members. This is a laborious job and the Governing Board greatly appreciates his effort.]

Dick has been a stamp collector since age eight, starting with worldwide at the time when that seemed possible. Over the years, he sold his worldwide material one continent at a time. A semi-postal collection captured his attention for several years, then it also was sold.

In the 1970s, he joined APS and ATA and, most importantly, the Biology Unit when mammals became his primary collection. Work as a database consultant interfered with his philatelic pursuits. After retiring, his interest expanded to Birds, Mammals, Reptiles, and Amphibians. He says he flirts with fish as well. He keeps a database of all binomial names for Birds and Mammals. His album pages contain either one genus or, for popular species a single species. He says that none of his collecting would be possible without the editors and contributors to Biophilately.

“When the position of Publisher opened up, I thought I would be one of many applicants. Luckily for me, I was the only one. I’ve enjoyed getting to know the editors and other members.

“The officers of the club are encouraging us all to exhibit. When it happens, the exhibit will include display items, especially my photographs of species that also grace my albums.”

(continued on page 203)

NEWS OF NOTE

BIOPHILATELY LITERATURE AWARD

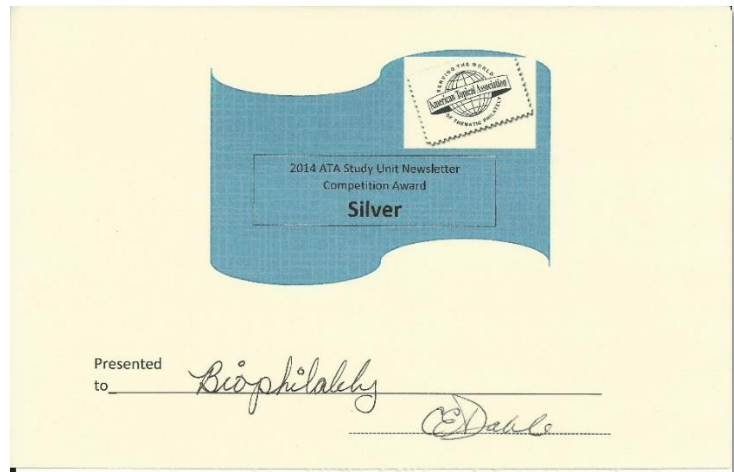
This year for the first time, the American Topical Association held a Study Unit Literature contest in conjunction with the National Topical Stamp Show. Only three other shows in this country currently hold philatelic literature exhibitions. They are the APS StampShow, CHICAGOPEX, and NAPEX. This new contest gives topical groups a chance to show their publications and get constructive feedback for improvement.

The idea for this contest was from our own Fred Skvara, who until this year was a member of the ATA Board of Directors. Sixteen of the 52 ATA study units submitted their newsletters or journals for judging. The publications were organized into three groups by membership size of each unit: Large (more than 200 members), Medium (50–200 members), and Small (fewer than 50 members). *Biophilately* competed in the Medium category.

Chris Dahle, who is an accredited philatelic judge, served as the Chief Judge. (Naturally he had to recuse himself when it came to evaluating our own journal.) The other members of the jury were Bruce Johnson, former Director of Units for the ATA, and Wayne Youngblood, noted philatelic author and Editor of *Topical Time*.

The quality of the entries was very high with all earning at least a Silver-Bronze award. *Biophilately* garnered a Silver medal. Three received Gold awards: *Ice Cap News* (American Society of Polar Philatelists), *The New Cartophilatelist* (Cartophilatelic Society), and *Enophilatelica* (Wine on Stamps Study Unit).

Judging this year was based on the rules for Literature exhibits provided by the American Philatelic Society. There was a lot of discussion among the study unit editors and members that these rules are not suited for the type of topical publications produced by the ATA study units. As a result, the ATA is planning to revise these rules for future contests.



The positive response to this first-time competition ensure that there will be more of these events at future shows.

NEW CHECKLIST

In the last issue, we reported on the new ATA topical checklist database. The ATA uses this database that contains almost 400,000 entries on stamps and almost 600,000 topical listings to produce tailored lists available to members. This project is the result of the work by Karen Cartier, with technical assistance from her son, Michael.

The checklists, available in a spreadsheet format or printed, include the country, date of issue, Scott number, denomination, and a description of the stamp subject. They are invaluable to topical collectors in researching and acquiring stamps. In some cases, meter stamps, postmarks, postal stationery and other items are included. The ATA will regularly update the lists, and members have the option to receive annual updates.

The latest iteration of the Checklist dATAbase contains a brand new checklist on Biologists. It is the only list added during the last month. It currently contains 2545 items. Below is an example of some of the A country listings. Note, many of the descriptions are very complete and contain a lot of information that would be helpful to members of the Biology Unit.

Checklists are available to ATA members at a nominal price. Cost is a penny per item on the checklist—with mini-lists for 50 cents and maxi-lists of more than 5,000 items for \$50.

Country	Year Mon Day	Denom	Scott	Description
Aegean Islands, Italian	1932	1.25l	26	Carlo Giuseppe Guglielmo Botta (1766-1837), Biologist, Medicine, Poet
Aegean Islands, Italian	1932	100l	C14	"Notebooks" by Leonardo da Vinci (1452-1519) Biologist, Anatomist
Afars and Issas	1972 Oct 05	20fr	C70	Louis Pasteur (1822-1895) - Pasteurization Process; Glassware, Mortar, Crystals, Biologist, Bacteriology
Afars and Issas	1972 Oct 05	100fr	C71	Jean-Marie Camille Guerin (1872-1961), Biologist, Veterinarian, Bacteriology, Leon Charles Albert Calmette (1863-1933), Biologist
Afars and Issas	1973 May 09	8fr	C83	Nicolaus Copernicus (1473-1543), Telescope, Biologist, Medicine
Afars and Issas	1973 Oct 12	10fr	C85	Edward Jenner (1749-1823), Mason, Physician, Discoverer of Vaccination, Biologist, Medicine, Bacteriology
Afars and Issas	1973 Oct 12	49fr	C87	Robert Koch (1843-1910); Tuberculosis Bacillus; Biologist, Bacteriology, Nobel Medicine (1905)
Afars and Issas	1973 Oct 12	85fr	C90	Andre-Marie Ampere (1775-1836), Biologist, Botanist
Afars and Issas	1975 Jul 24	150fr	C92	Andre-Marie Ampere (1775-1836), Biologist, Botanist
Afghanistan	1951 Nov 04	35p-125p	390-91	Ibn Sina Avicenna (980-1037), Doctor and Philosopher, Biologist, Surgeon, Astronomer; 20th Anniv. Of Founding of the National Graduate School of Medicine
Afghanistan	1982 Nov 24	7af	1018	Robert Koch (1843-1910), Biologist, Bacteriology, Physician; Tuberculosis Bacillus; Nobel Medicine Centenary
Afghanistan	1952 Jul 12	Various	B1-2	1000th Anniv. of Birth of Ibn Sina Avicenna (980-1037), Biologist, Surgeon and Philosopher, Astronomer, o/p with Anniv. Of Birth of Avicenna

AMPHIBIAN HANDBOOK

A new ATA Handbook is in the works by Unit member Dr. Vic Eichler (BU1850) that will list amphibians on stamps of the world. The listing will include entries for almost 1300 stamps from 192 different countries. The author also has images of more than 90 percent of the items.

Dr. Eichler is requesting help from Unit members willing to assist in getting Scott catalog numbers for some of the individual stamps because he does not have access to the latest Scott Catalogues at his local library. Any member who can assist him will receive credit in the publication. Please contact him at: 10867 Dutch Settlement Rd, Three Rivers, MI 49093, or by email at vic33@frontier.com.

Vic also collects coins with frog images on them, and he tells me that there are about three dozen countries that have issued such coins including the USA. On the back of our 2012 US quarter in the National Park series recognizing El Yunque Forest Park in Puerto Rico there is a small coqui frog, which is prevalent throughout the island and a symbol of the territory.

One of his favorite frog coins, though, is from Fiji. If you are interested in obtaining a listing of these coins, please contact Vic at the address listed above.



NEW INSECT HANDBOOK

Our own Don Wright, who is the Associate Editor for Entomology and also a member of the Unit Board of Directors, has just completed work on the fourth ATA handbook on Insects (HB164).

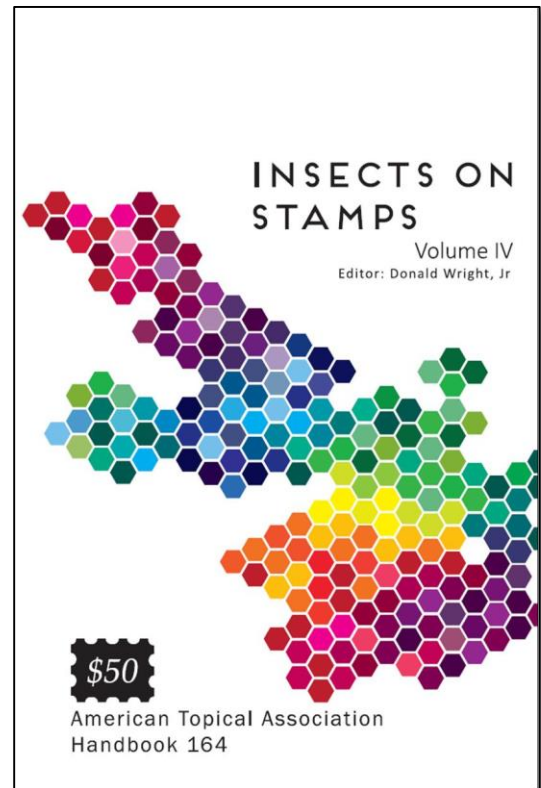
Volume 4 of *Insects on Stamps of the World* (2003–13) is expected to become available at the APS show in Hartford, Connecticut on 21 August. This ATA volume will list stamps by country of issue and by taxonomic order.

The ever increasing quantity of “stamps” from organizations like Stamperija, Ltd. and other non-governmental organizations has resulted in such non-catalog items being listed separately in this volume.

Additionally, ATA will be making available a compact disk containing all four volumes of the Insect handbooks merged into one. The advantage of this is that corrections, additions, and updated taxonomic changes to all previous volumes (1893–2013) will be included in one place. The disk will be searchable, as well, making it easier to find all information in one place. Volume 4 and the CD are available from the ATA.

At its annual meeting, the members of the Biology Unit voted unanimously to sponsor the publication of this handbook as a contribution to the ATA.

The attractive cover design is by Amanda Morgenstern.



TOPICAL TIME DIGITAL ARCHIVE

The American Topical Association (ATA) has released a complete digital archive of all *Topical Time* issues from 1949 through 2013. It contains 382 issues of the thematic journal, totaling about 34,272 pages, in electronically searchable Portable Document Format (PDF) files. The Archive is housed in a 16-gigabyte wafer-style flash drive the size of a credit card. It plugs into Universal Service Bus (USB) ports on both Windows and Apple devices.



Topical Time Digital Archive

Topical collectors seem delighted with the comprehensive searchable index supplied with the Archive. The index has been prepared and refined during the last two years and is supplied in three different formats. There is ample space on the Archive flash drive to hold hundreds more issues of *Topical Time*. Archive users are downloading current and future *Topical Time* issues from the ATA website at www.americantopicalassn.org. Purchasers of the *Topical Time* Archive will have access to FlippingBook versions of every issue on a website.

ATA members contributing to the development of the *Topical Time* Archive are Myron Molnau (team chair), Dorothy C. Smith (indexer), Chris Steenerson and Todd Ronnei.

The comprehensive digital archive of *Topical Time* is available from the ATA Office for \$99 postpaid. Payment may be by check to ATA, PO Box 8, Carterville, IL 62918-0008, or PayPal to americantopical@msn.com. Call 618-985-5100 for more information or to pay by credit card.

CLOSED ALBUMS**IN MEMORIAM: DONA M. (EVANS) JAQUET (LM39)**

It has just come to our notice that a long-time member of the Biology Unit has passed away. Dona Jaquet was a Life Member of the Unit. She joined the Biology Study Unit in 1970, and served as the Unit Secretary between 1975 and 1978. Dona was an avid philatelist who began as a young girl and who collected a wide variety of biological topics including reptiles, birds, insects, mammals, and marine life. She had a special interest in botany. She contributed articles for *Biophilately* on State Trees and State Flowers. She was a member of the Caterpillar Stamp Club in Washington, Illinois, for which she also served as Secretary.

Dona was born on September 5, 1926, in Peoria, Illinois. She married Wallace R. Jaquet in 1946 and they had a son and a daughter. She died on April 3, 2012 in Peoria. Her husband survived her, but he also passed away earlier this year. Also surviving are her two children, five grandchildren, and 11 great-grandchildren.

IN MEMORIAM: JOSHUA MARION MORSE III (LM52)

During the update of our membership roster for this edition, we discovered the passing of another Life Member of the Biology Unit. Professor Joshua Morse III joined the Unit in 1978. He collected birds on stamps.

Professor Morse was born on March 7, 1923, in Poplarville, Mississippi. His college education at the University of Mississippi was interrupted by service as a U.S. Army officer during WWII. After the war, he received a law degree and subsequently joined the faculty at Ole Miss. He became Dean of the law school in 1964. As dean, he admitted the school's first black students. In 1969, he was appointed as the Dean of Florida State University College of Law where he served until 1980. Josh was active in law reform and served as U.S. delegate to the World Peace Through Law Conference as well as other international legal organizations. In 1973, he received a commission in the U.S. Navy Judge Advocate General Corps and ultimately retired with the rank of Captain. He was the author of many articles on international and maritime law.

Josh died on September 14, 2012. He is survived by his wife of 66 years, Nell Hartzog Morse, a son, two daughters, and six grandchildren.

IN MEMORIAM: HAROLD E. WALKER (LM38)

After the posting of the last edition of *Biophilately*, we received notice from his wife, Diana, of the passing of Harold E. Walker from Earley, Berkshire, England. He joined the Unit in 1969.

We have no further details.

AMPHIBIAN SUBJECTS OF FAMOUS WRITERS APPEARING ON STAMPS

Vic Eichler, BU1850

Many authors of the 19th and 20th Centuries became well known through their writings that featured frogs and toads in a prominent role. A number of the amphibian subjects of these writers, have been featured on postage stamps of many countries.

Jean de La Fontaine (1621-1695) was one of the most famous poets of 17th Century France. He was especially loved for his many collections of fables, several of which included situations with frogs. The 300th anniversary of his death in 1995 was noted with a series of stamps (Sc#2486-91) illustrating animals (including a frog) from his fables.



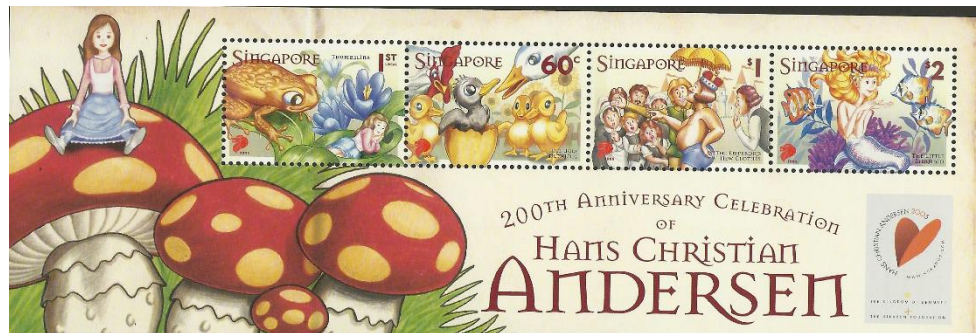
La Fontaine Fable
France Sc#2487



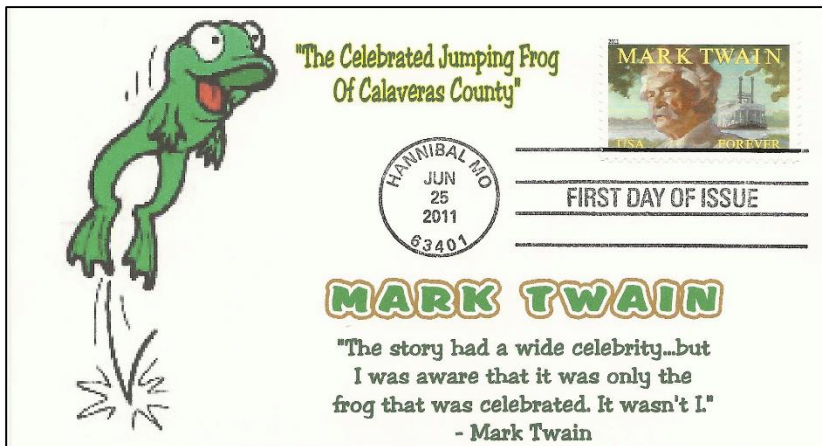
"The Frog Prince"
Ajman OTS#1269

One of the most famous fairy tales published by the German brothers, **Jacob (1785-1863)** and **Wilhelm (1786-1859) Grimm** is their story "The Frog Prince." In 1971, the kingdom of Ajman—one of the seven entities that make up the United Arab Emirates—issued one stamp in a series of six devoted to this beloved Grimm Fairy Tale.

The tales of Danish writer **Hans Christian Andersen (1805-1875)** have been translated into plays, ballets, films, and television specials. One of his most beloved stories is that of "Thumbelina," a tiny child who was born within a flower. For the 200th anniversary of his birth in 2005, Singapore released a mini-sheet of four stamps that included a 1st value stamp illustrating a toad in the story who approaches the little child.



"The Frog Prince"
Singapore Sc#1133a



A number of countries have honored American writer **Samuel L. Clemens (1835-1910)** who wrote using the pen name Mark Twain. It is not widely known that his short story titled, "The Celebrated Jumping Frog of Calaveras County," published in 1867, was the first publication that brought Mark Twain to national prominence. A 2011 USA First Day of Issue cover honors this author and his story.

A stamp issued at Christmas 1980, honors a frog made famous by the popular Colombian poet **Rafael Pombo (1833-1912)**. This Colombian stamp shows Rin Rin in stylish fashion and his companion the mouse as they go about their adventures in the children's story book published in 1901 titled, "*El renacuajo paseador* (The Tripping Tadpole)."

Story Illustration
Colombia Sc#C693

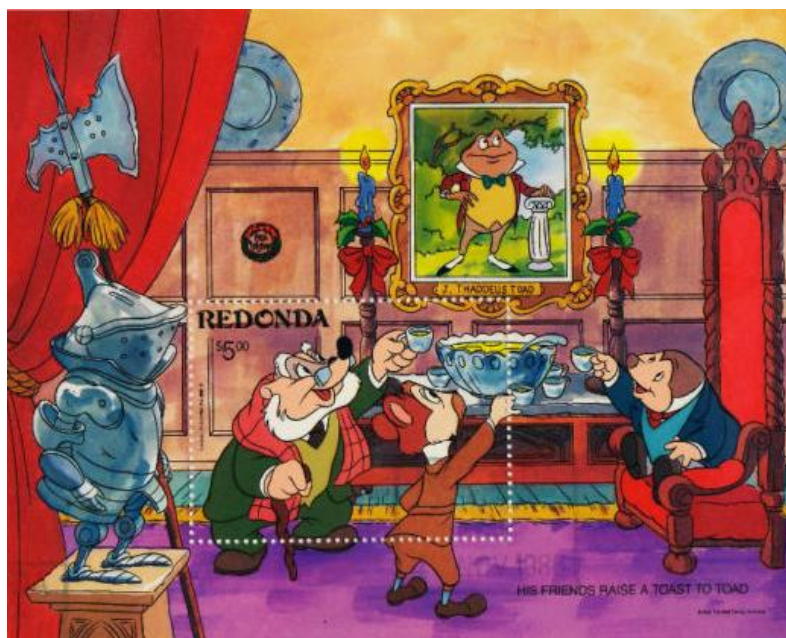


Viktor Vasnetsov (1848-1926) was a Russian folklorist who published "The Frog Tsarevna," in 1918. This is one of a number of variations that exists in many European countries where a frog becomes royalty after being freed from an evil spell and eventually marries a prince or princess. These stamps from a sheet of a dozen that illustrate two other Russian folktales illustrate scenes from Vasnetsov's "The Frog Tsarevna (Frog Princess)".

Story Illustration
Russia Sc#5279a-d



The most well-known writing of celebrated Scottish author **Kenneth Grahame (1859-1932)** is the classic children's tale *The Wind in The Willows*, published in 1908. Toad is one of the four animal characters whose interactions throughout the story have fascinated both adults and children for many generations. The visit of Toad's friends Rat, Mole, and Mouse to Toad Hall is commemorated in a 1986 "cinderella" sheet from Redonda in which a portrait of Toad is part of the margin.



Author and illustrator **Beatrix Potter (1866-1943)** is equally well known for her stories *The Tale of Peter Rabbit* (1902), and *The Tale of Jeremy Fisher* (1906). The Isle of Man issued a souvenir sheet honoring this English author in 2006. Great Britain released a stamp in 2006 also to honor this author.



Beatrice Potter Souvenir Sheet
Isle of Man Sc#1171d



Tale of Mr. Jeremy Fisher
Great Britain Sc#2334

American biologist **Rachel Carson (1907-1964)** is credited with advancing the environmental movement with the 1962 publication of her book *Silent Spring*. Her writing had the seminal effect of leading to a nationwide ban on DDT and other synthetic pesticides that she had shown were leading to the death of many species of animals.

Many countries have issued stamps with the likeness of Rachael Carson, including Palau (1987, 33c, Sc#479a), the United States (1981, 17c, Sc#1857), and Zambia (2000, K500, Sc#856g). In 2000, Marshall Islands issued a stamp to commemorate Rachel Carson that includes an illustration of a frog.



Rachel Carson
Marshall Islands Sc#710e

The author wishes to thank Editor Jack Congrove for providing information for some of the above items that were not listed in the Scott catalogues.

NTSS 2014 REPORT

Jack R. Congrove, BU1424

The American Topical Association held its annual National Topical Stamp Show 27–29 June 2014, at the Renaissance St. Louis Airport Hotel. The theme this year was “Gateway to Topicals,” word play on the famous St. Louis Gateway Arch landmark. The Biology Unit held its annual meeting at this show on Saturday. See the meeting report by Chris Dahle on page 143.

I enjoy the NTSS the most of all the shows I attend and I wish all of our members would pay it a visit at least once. The dealers have a wide variety of materials, and not just for the topical collector. But many of them specialize in topical material and most have their items arranged so that it is easy for a collector to search for their topic without having to wade through endless unrelated stuff.

Personally, I enjoy looking through boxes of mixed covers and postcards and I have discovered many treasured items this way. However, I was so busy at the show this year that I did not have a chance to look through any dealer offerings until Saturday afternoon. There are so many events happening that one person cannot participate in all of them. In addition, as one of the organizers for SEAPEX this year, I was busy pursuing dealers and exhibitors to support that show. And as co-chair of the NTSS to be held next year in Portland, Oregon, I was engaged in meetings and coordination to prepare for it as well.

But enough of my whining. One of the main reasons I have so much fun at this show is the opportunity to see old friends and meet new ones. The ATA also provides additional social activities that most other shows do not. For example, on the Thursday before the show they offer a half-day tour and on Monday following the show, there is a full day tour involving local attractions. This year the Thursday tour was around St. Louis. We visited the restored post office and customs house and its museum and toured some of the St. Louis neighborhoods. Especially interesting was the tour of the Cathedral Basilica of Saint Louis. This spectacular building is a true work of art.

For the Monday tour we traveled to Hannibal, Missouri, to visit the Mark Twain Boyhood Home and Museum. The Executive Director, Henry Sweets, who is also a stamp collector and philatelic judge, gave us a personal tour and during lunch, gave a presentation on stamps and covers relating to Samuel Clemens and his literary creations based on items from his own collection, many of which are unique.



Mark Twain Boyhood Home
L-R: Larry Davidson, David Kent, and Kathy Kirk

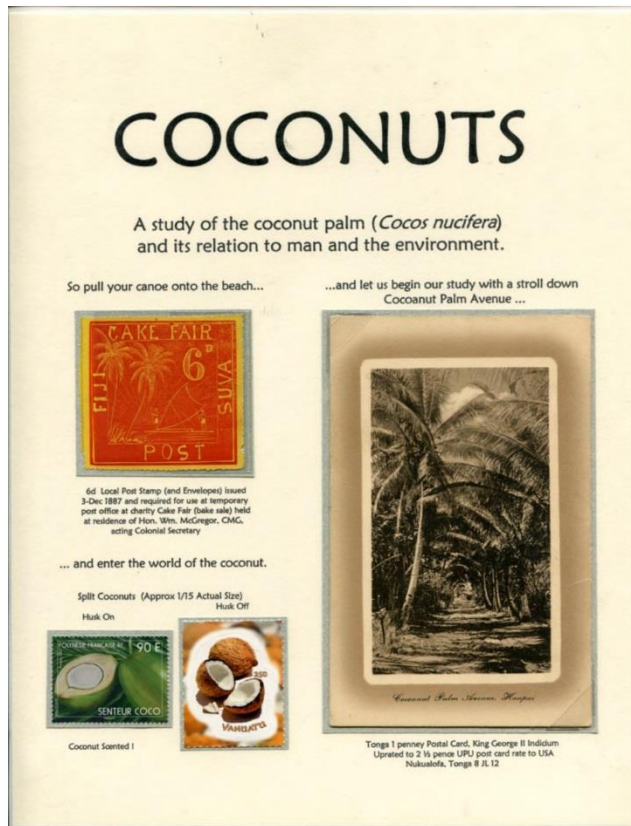
Now about the show itself. The bourse had 33 dealers mainly from the Midwest, but with a couple from as far away as California and Florida. As I mentioned, I did not have a chance to shop much, but I did visit each dealer and they were quite friendly and spent time chatting with me. I sensed that the attendance was lower than usual, so perhaps they had a little more time to talk instead of being busy with many other customers.

There were 31 competitive exhibits consisting of 137 frames. No less than 15 of these exhibits were of biological or medical themes. In addition, there were **five novice exhibitors** at this show. In most national shows it is atypical to find more than one novice. Four of the novice exhibitors showed biological themes and all of them received awards at Silver-Bronze, or above, with one meriting a Vermeil. This achievement is almost unheard of at a national show. This remarkable showing is a terrifically positive sign for topical collecting and the philatelic jury was considerably impressed.

The Biology Unit Award went to Vincent DeLuca for his exhibit *The Olive—Olea europaea*.



Page from *The Olive—Olea europaea*



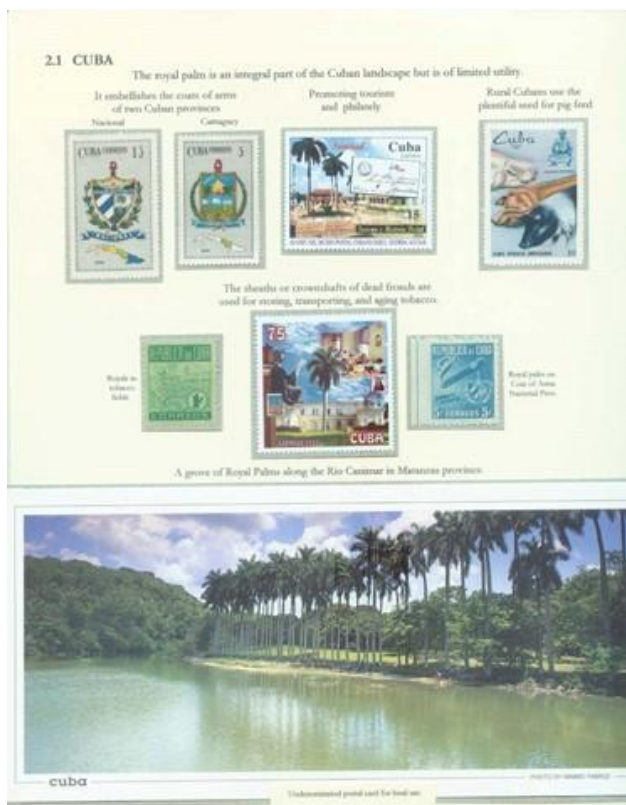
Title Page from *Coconuts*

Former Unit member, Vincent DeLuca, won the Grand award with *The Olive—Olea europaea*, a five-frame thematic exhibit on the origin and evolution of the olive tree and its uses. This honor makes the exhibit eligible for the Champion of Champions competition at the APS StampShow in Hartford, Connecticut, 21–24 August.

Another former Unit member, Phillip J. Stager, received the Reserve Grand award for his eight-frame thematic exhibit *Coconuts*, a study of the coconut palm (*Cocos nucifera*) and its relation to man. Phil also won the One-frame Grand award with *The Royal Palm*, a geographical study of this landscape palm. The One-frame Grand qualifies this exhibit to compete for the One-Frame Champion of Champions award at the APS AmeriStamp Expo in Riverside, California, 13–15 February 2015.

Botany was again well represented by Unit member Chris Dahle's five-frame thematic exhibit titled *Exploring the Evolution of Plants*, which received a Vermeil award.

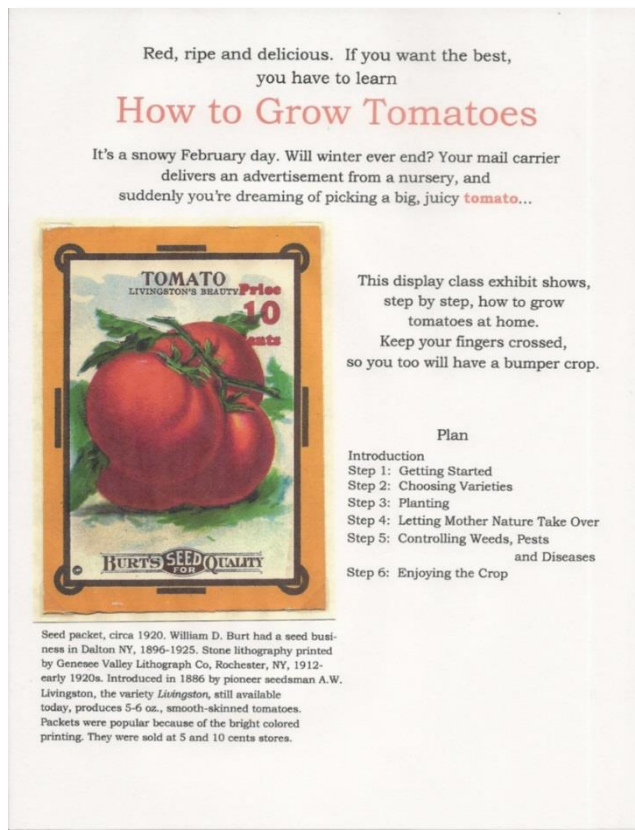
Continuing with the botany theme, Unit member Dawn Hamman received a Vermeil medal, the American Association of Philatelic Exhibitors Award of Honor, and the AAPE Best Title Page award for her one-frame display exhibit, *How to Grow Tomatoes*.



Page from *The Royal Palm*



Page from *Exploring the Evolution of Plants*



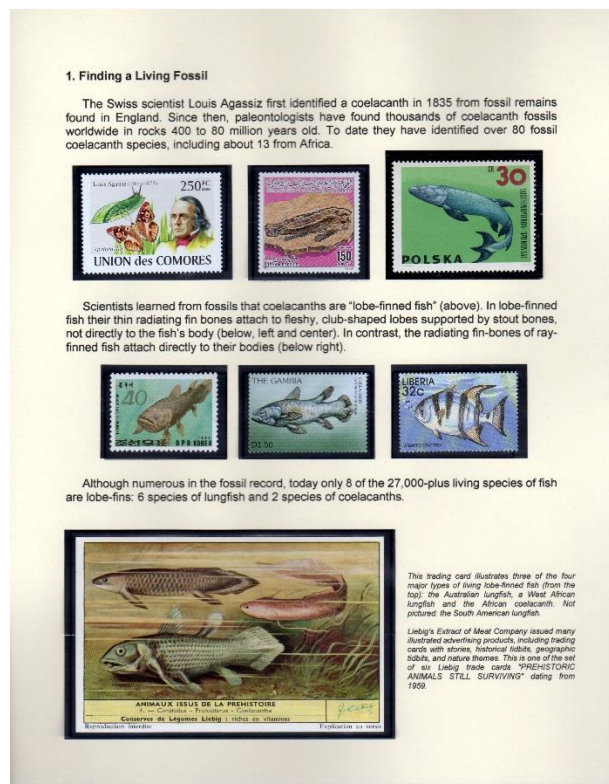
Title Page from *How to Grow Tomatoes*

After botany, the next most popular biological area was mammals with three exhibits. Robert Mather received a Gold medal for *The Donkey*, a ten-frame thematic exhibit on the history of this animal. Dennis Carman received a Vermeil medal and the Ships on Stamps award for his eight frame thematic exhibit, *Thar She Blows—A History of Whales and Whaling*. George DeKornfeld received a Vermeil medal for *Making Whitetail Venison Sausage*, a one-frame thematic exhibit in recipe form. Though it is not to some people's taste, it does involve a mammal.

Unit member Susan Jones, one of the novice exhibitors, won a Silver award for her two-frame display exhibit, *The African Coelacanth*, a story of a living fossil once thought extinct. I learned a lot from this interesting exhibit.

Another Unit member and novice exhibitor, Barbara Herbert, received a Silver medal and the ATA Chapter V Incentive Award for her one-frame thematic exhibit *California Quail—Beyond Their Native Territory* about these birds living outside their native range.

Dawn Hamman included some more birds with her five-frame display exhibit *Backyard Chickens*, which received a Vermeil medal and an AAPE Award of Honor.



Page from *The African Coelacanth*

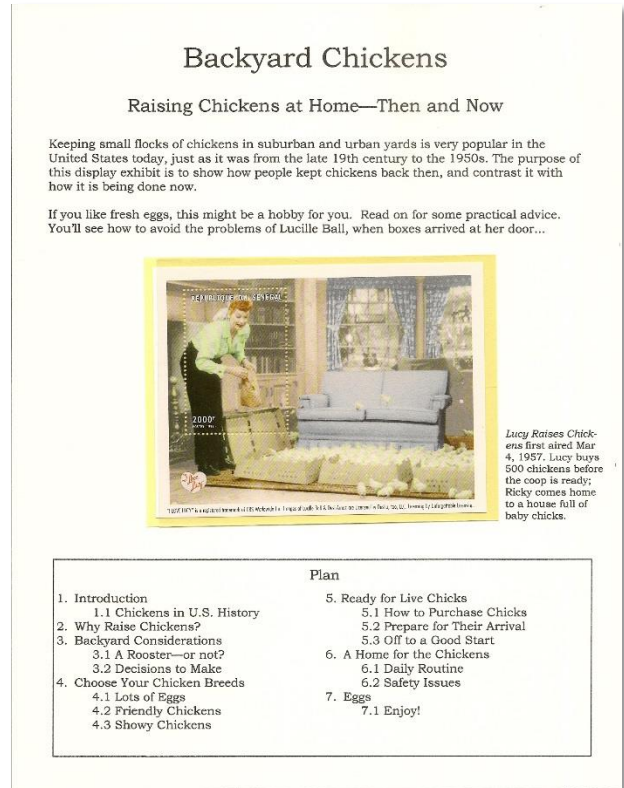


Page from *Coccinellidae—Ladybird Beetles*

One of my favorite exhibits was from former Unit member Jean Stout, another novice exhibitor at this show. Last year she decided to try making an exhibit by picking an off-the-wall topic depicted on only a small quantity of stamps. I think she succeeded admirably and the jury agreed. Her two-frame display exhibit titled, *A Celebration of the Cockroach!* not only won a Vermeil medal, but also received the AAPE Creativity Medal and the AAPE Novice Award. I am looking forward to seeing this exhibit again at SEAPEX.

As a collector of butterflies on stamps, I am always interested in exhibits that deal with insects and this show had another such presentation. Janice Erbach, another novice, received a Silver-Bronze medal and the Women Exhibitors Sterling Achievement Award for her one-frame thematic exhibit *Coccinellidae—Ladybird Beetles and their Impact on Man*.

I think many people were as impressed as I at the quantity and quality of the biological topic presentations at this show. The featured study unit this year was the Americana Study Unit. They had a one-frame exhibit that showcased their unit history. Next year in Portland, Oregon, our own **Biology Unit** will be the featured study unit. Unit members will be working on a Unit exhibit to display at that show. Let us all prepare an exhibit on a biology topic for the show next year and break the record set this year.



Title Page from *Backyard Chickens*



Page from *A Celebration of the Cockroach!*

TRAVELING INTO THE WORLD OF BUTTERFLIES AND MOTHS: PART I

Vladimir Kachan, Belarus

[Ed. Note: This article is the first in a four-part series on the study and science of Lepidoptera by Vladimir Kachan from Belarus. Mr. Kachan is a long-time, avid collector and exhibitor of Lepidoptera on stamps who has written articles for several philatelic publications dealing with this topic. He was a member of the former Butterfly and Moth Stamp Society as well as the former Philatelic Lepidopterist Association. You can contact him via email at: vladimirkachan@mail.ru, or post at: P.O. Box-36, BY-220089, Minsk-89, Republic of Belarus.]

Introduction

Butterflies are the most beautiful creations of nature, the top of its artistic mastery, undoubted masterpieces of evolution. Moths are often regarded as less engaging, but with their diversity of shapes, sizes, and colors, they are as fascinating as butterflies. They believed in Ancient Rome that butterflies had come from the flowers torn from their plants.

From the point of view of historical development, butterflies and moths are a comparatively young order of insects. The lack of paleontological data does not allow determination of their age even approximately. But on the grounds that all of them live inseparably linked with the existence of flowering plants, we may suppose that butterflies existed already at the end of Cretaceous period of the Mesozoic era. Moths existed most probably even earlier, perhaps already in Carboniferous period.

More than 170 thousand identified species of butterflies and moths, spread all over the world except in the Antarctic. Their sizes vary from 2-3 millimeters to 20-30 centimeters. There are many relic and endemic species among butterflies and moths, which are the adornment of nature, have great scientific significance, and bring real joy and boundless aesthetic delight. Great is the significance of butterflies as pollinators, and the chrysalis of Bombyx moths are used as a raw material for silk production. The hundreds of different species of butterflies and moths surprise us with their beauty and a creative peak of perfection.



Queen Liliuokalani
Hawaii Sc#52, 1898



Oldest entire postal with flying butterfly of Thurn and Taxis
Germany, 1863

Butterflies and moths have a wide distribution in philately. About 250 countries and territories have dedicated postage stamp issues to them. The first stamps with the pictures of moths appeared on the issues of Netherlands India in 1902, Curaçao in 1903, and Surinam in 1904. But the best stamp among the first issues is considered to be from Hawaii, issued in 1898, which depicted a hair-pin in the shape of a butterfly on the queen's head.

1. Study of Butterflies and Moths in the 17th to 20th Centuries

NATURALISTS, ENTOMOLOGISTS, and BIOLOGISTS

Butterflies and moths are not only beautiful with a variety of forms, but also their life is very interesting. Their transmutations and alternations of stages of development attracted the attention of nature-lovers from time immemorial. But only in the 17th Century (1648) was the first book published that described exotic insects, *Historia Naturalis Brasiliae*, by Georg Marcgrave and Willem Pizo. Dutch doctor Jan Swammerdam (1637-1680) in *Book of Nature* laid down the foundations of entomological anatomy and introduced the notion of metamorphosis of insects. Painter I. Hudard studied transmutations of butterflies for 40 years. The results of his work was the book, *Metamorphosis and Natural History of Insects*, published in 1662.

In the 17th and 18th Centuries, Maria Sibylla Merian (1647-1717), a German painter, naturalist, engraver, and publisher, achieved world-wide fame thanks to her scientific-artistic albums that showed and proved the phenomenon of metamorphosis of insects. Between 1699 and 1701, she travelled to Surinam. The result of her observations and sketches of that trip was *Metamorphosis of Surinam Insects*, published in 1705. Merian became a pioneer of the South American insect world thanks to her detailed and colorful depictions and the popularization of the metamorphosis of insects. Tsar Peter the Great purchased the most precious of Merian's publications, collections, and watercolors for Russian museums and libraries. In 1983, in memory of Merian, the postal authorities of Surinam issued a series of 12 stamps with the pictures of butterflies depicted by Merian during her trip to South America.



Maria Merian
Germany Sc#1479



Carl von Linné
Sweden Sc#298a

In the middle of the 18th Century, studies of entomofauna of vast territories began. The most valuable contribution to these studies was by Swedish scientist Carl von Linné (1707-1778). He described the zoological scheme, terminology, and classification of animals in the first edition of *Systema Naturae* (1735). In 1746, he published *Fauna Svecica* where he rebuilt the classification of animals, determined new genera, separated species from varieties, and gave simple names to species. For insects, he also studied the plants on which they lived. Carl von Linné described about 2000 species of insects and a considerable number of them were butterflies and moths.

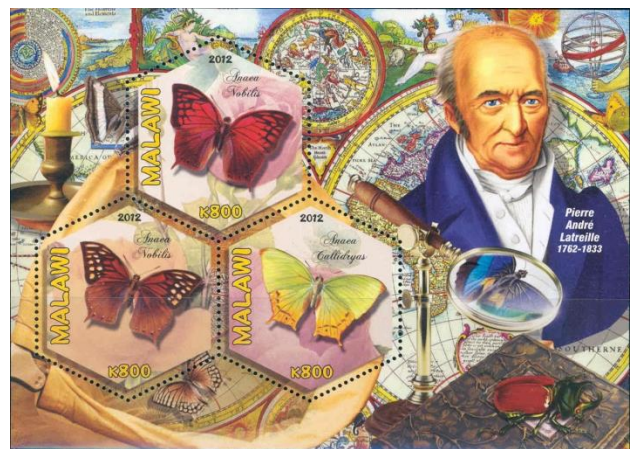
English naturalist Edward Donovan (1768-1837) made a trip through the countries of Oceania between 1800 and 1805, during which he collected and described a great number of insects, including butterflies. He founded the London Museum and Institute of Natural History in 1807. Another English naturalist, Adrian H. Haworth (1767-1833), who studied the butterflies of Europe, published *Lepidoptera Britannica* in 1829.

French entomologist Pierre André Latreille (1762-1833) described many species of insects from South America, including butterflies. In 1831, he proposed an improved system of classification of insects, approximately corresponding to the one currently in use.

In 1835, Italian biologist Agostino Bassi (1773-1856) wrote a work on the parasites of silkworms.

Cuban biologist Felipe Poey (1799-1891) was an investigator of the wild world of Cuba, including butterflies. The Cuban Society of Natural History was named after him, and the Cuba has repeatedly dedicated postage stamps in his honor.

Famous English naturalist Charles Darwin (1809-1882) was a founder of evolutionary studies about origin of animal and plant species by natural selection. During his world cruise aboard the ship HMS *Beagle* between 1831 and 1836, he made many observations on zoology, geology, anthropology, and ethnography. In the virgin forests of Brazil he, for the first time, saw a butterfly producing a sound with the help of special structure on its wings. From that trip, Darwin assembled a large entomological collection. After the trip, he published *The Diary of Investigation*, where he described for the first time the variety of South American and Islands animals. In his book, *The Origin of Species*, Darwin described the connection



Pierre André Latreille
Malawi (2012 not catalogued)



Charles Darwin
Chad (2014 not catalogued)

between a flower and an insect-pollinator. Darwin's work showed the great significance of the problem of plants pollination for the science and practice of agriculture.

Russian naturalist Karl Frantsovich Rul'e (1814-1858) worked out a wide program on ecology of animals. He studied moths—pests of winter crops. He wrote a work about harmful caterpillars of moths in 1847.

English naturalist Henry Walter Bates (1825-1892) spent 11 years in Brazil on the Amazon. There he assembled a large collection of insects including butterflies and moths—more than 14.7 thousand species, including eight thousand previously unknown to science. He discovered the phenomenon of mimicry in 1862. The case of imitation by edible species taking the coloring, shape, and behavior of inedible species is called “Batesian mimicry” in his honor.



Henry Walter Bates
Comoro Islands Sc#1053c



Tyan-Shansky
Russia Sc#1615

Russian geographer and entomologist Pyotr Semenov-Tyan-Shansky (1827-1914) devoted his entire life to the collection and study of insects, mainly of beetles and partly of butterflies. With an entomological purpose, he visited the western, central, and southern regions of Russia, and at the 1880s, he made big entomological collections in the Pyrenees, the Italian and Swiss Alps, and Germany. He was one of the founders of the Russian Entomological Society, and from 1889 to 1914, he was its president. The collection of insects, made by Semenov-Tyan-Shansky includes about 700 thousand specimens and it is kept in Zoological Museum of Science Academy of Russia.

French entomologist Jean Henri Fabre (1823-1915) investigated the life and instincts of insects. In his experiment with moths, he ascertained that males find females with the help of a sense of smell at a considerable distance. He described his observations of the life of insects in ten volumes of *Entomological Memories*.

Russian biologist Alexander O. Kovalevsky (1840-1901) was one of the founders of evolutionary embryology and physiology. He studied texture and functions of secretory organs of invertebrates, including butterflies and moths.

Russian entomologist Nikolai Yakovlevich Kuznetsov (1873-1948) studied the fauna of butterflies of Russia as well as the European and Asian parts of the Arctic. He also studied the fossil insects from the Paleogene. He wrote works on systematization, morphology, ecology, physiology, and paleontology of insects.



Artwork for entomologist J. H. Fabre issue
Monaco Sc#874

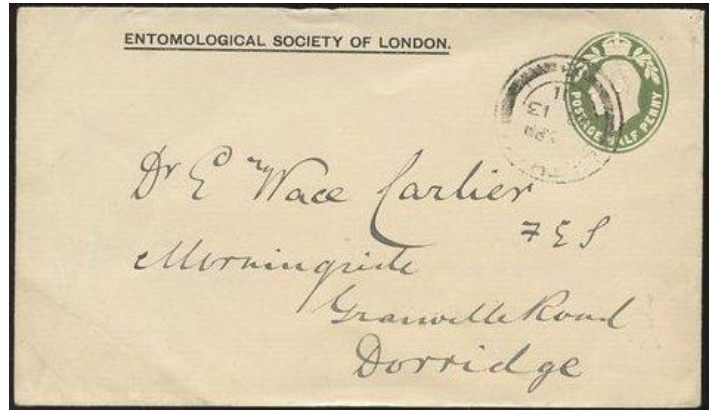
Russian zoologist Mercury S. Gilyarov (1912-1985) created a new branch of biology—soil zoology. He wrote works on soil pests, the role of animals in soil formation, the evolution of insects and other Arthropoda, the conformity to the laws of natural selection, and zoological methods for diagnostics of soils. He wrote about taking measures of fight against soil pests, including the caterpillars of moths, in 1954. From 1973 to 1985, he was the president of the Entomological Society of the USSR.

Many other naturalists and entomologists have studied butterflies and moths and made great contributions to the development of entomology. Among them were: Johan C. Fabricius, Johann C. Esper, Jean B. Godart, Josef J. Mann, Otto Staudinger, Kurt Lampert, Peter S. Pallas, Eduard A. Eversmann, Nikolay G. Yershov, Grigory Y. Grumm-Grzhimaylo, N. A. Kholodovsky, and Boris N. Shvanvich, but the postal authorities have not yet issued stamps to memorize them.

SCIENCE ORGANIZATIONS

In many European, Asian and American countries there are entomological societies that unite the scientists who work in the field of entomology. The oldest among them are the French Entomological Society founded in 1832 and the Royal Entomological Society London founded in 1833. The main tasks of these societies are the investigation of the fauna and biology of insects, the development of measures to fight pests, and the protection of useful species.

Most developed countries have natural history museums with permanent collections and expositions of butterflies and moths. The oldest one is the National Museum of Natural History in Paris, France, founded in 1793. Its collection of butterflies and moths include 1.5 million specimens. The most famous museum is the British Museum of Natural History founded in 1881. It has the largest collection of butterflies and moths in the world consisting of approximately three million specimens. These museums produce scientific research on systematization, faunistics, zoogeography of butterflies and moths, and popularization and information about environmental protection.



Great Britain cover from Entomological Society of London 1911

In order to promote and exchange scientific information, scientists hold entomological congresses from time to time. The first International Entomological Congress took place in 1910 in Brussels. Since 1956, such congresses are held once every four years.

The growth of cities, land development at the expense of forests and meadows, air pollution, and the use of insecticides all lead to the sharp decline of butterflies and moths. That is why many countries and communities have begun to create special zoological gardens—butterfly farms—for breeding of rare and exotic species, and also for studying these creatures. Nowadays such farms exist in Papua New Guinea, England, Germany, France, Japan, United States, Canada, and many other countries.

[to be continued]

**ANIMALS; DOGS & CATS; HORSES; INSECTS; BUGS
BUTTERFLIES; MALARIA; FLOWERS & PLANTS; ORCHIDS
MUSHROOMS; MARINE LIFE; FISH; TURTLES; REPTILES
SHELLS; WHALES & SEALS; BIRDS; MINERALS
MIXED BIOLOGY TOPICS**

Write for the price list of your choice

EASTERN SHORE STAMP COMPANY

P.O. BOX 241, SEAFORD, DE 19963

e-mail: essc@comcast.net Phone - Phone: (302) 629-2328



BOTANY

Editor

Christopher E. Dahle, BU1269



New Listings

Scott#	Denom	Common Name/Scientific Name	Family/Subfamily	Code
ALBANIA 2013 October 30 (Flowers)				
2942a	20L	<i>Scilla albanica</i>	Asparagaceae	Fl A
2942b	90L	<i>Gymnospermium maloi</i>	Berberidaceae	Fl A
2942c	175L	<i>Tulipa albanica</i>	Liliaceae	Fl A
2942		Horiz strip 3 (Sc#2942a-c)		
ARGENTINA 2014 April 14 (Flora & Fauna of Iguazu Falls)				
2725b	8p	<i>Billbergia zebrina</i>	Bromeliaceae	Fl A MS
2725		MS of 4 (Sc#2725a-d)		
ARMENIA 2013 December 28 (Wine Production)				
978	330d	Vineyards/ <i>Vitis vinifera</i>	Vitaceae	V A
ARUBA 2013 November 12 (Nature Photography)				
432d	120c	Barancannan di Ayo by Stan Kuiperi	Cactaceae	V B U MS
432f	120c	Un Tesoro by Bruce Harms, <i>Dichrostachys?</i>	Fabaceae	Fl A MS
432h	120c	Cactus Landscape by Lara Kuiperi	Cactaceae	V B U MS
432i	120c	Palo di Bonchi by J. Dania, <i>Erythrina velutina</i> Block 10 (Sc#432a-j)	Fabaceae	Fl A
AUSTRALIA 2014 January 14 (Orchids, perf. 11¾×14)				
4026	60c	Golden Rock Orchid, <i>Dendrobium striolatum</i> (= <i>Dockrillia striolata</i> ssp. <i>chrysantha</i>)	Orchidaceae	Fl A
4027	60c	Bee Orchid, <i>Caladenia discoidea</i>	Orchidaceae	Fl A
4028	60c	Orange Blossom Orchid, <i>Sarcochilus falcatus</i>	Orchidaceae	Fl A
4029	60c	Shirt Orchid, <i>Thelymitra campanulata</i>	Orchidaceae	Fl A
2014 January 14 (Orchids, s/a, die cut 11¼)				
4030	60c	Golden Rock Orchid, <i>Dendrobium striolatum</i> (= <i>Dockrillia striolata</i> ssp. <i>chrysantha</i>)	Orchidaceae	Fl A
4031	60c	Bee Orchid, <i>Caladenia discoidea</i>	Orchidaceae	Fl A
4032	60c	Orange Blossom Orchid, <i>Sarcochilus falcatus</i>	Orchidaceae	Fl A
4033	60c	Shirt Orchid, <i>Thelymitra campanulata</i>	Orchidaceae	Fl A
2014 February 4 (Hearts & roses, perf 14¾×14)				
4048	60c	Rose, <i>Rosa x hybrida</i>	Rosaceae	Fl A
2014 February 4 (Hearts & roses, s/a, die cut 11¼)				
4050	60c	Rose, <i>Rosa x hybrida</i>	Rosaceae	Fl A

AUSTRALIA (continued)		2014 March 24 (National & State Floral Emblems, perf 14½×14)		
4053	70c	Tasmanian Blue Gum, <i>Eucalyptus globulus</i>	Myrtaceae	Fl A
4054	70c	Waratah, <i>Telopea speciosissima</i>	Proteaceae	Fl A
4055	70c	Golden Wattle, <i>Acacia pycnantha</i>	Fabaceae	Fl A
4056	70c	Common Heath, <i>Epacris impressa</i>	Ericaceae	Fl A
4057	\$1.40	Cooktown Orchid, <i>Dendrobium phalaenopsis</i>	Orchidaceae	Fl A
4058	\$2.10	Kangaroo Paw, <i>Anigozanthos manglesii</i>	Haemodoraceae	Fl A
4059	\$3.50	Sturt's Desert Pea, <i>Swainsona formosa</i>	Fabaceae	Fl A
		2014 March 24 (National & State Floral Emblems, coil s/a, die cut 12¾)		
4060	70c	Tasmanian Blue Gum, <i>Eucalyptus globulus</i>	Myrtaceae	Fl A
4061	70c	Waratah, <i>Telopea speciosissima</i>	Proteaceae	Fl A
4062	70c	Golden Wattle, <i>Acacia pycnantha</i>	Fabaceae	Fl A
4063	70c	Common Heath, <i>Epacris impressa</i>	Ericaceae	Fl A
		2014 March 24 (National & State Floral Emblems, bklt s/a, die cut 11¼)		
4064	70c	Tasmanian Blue Gum, <i>Eucalyptus globulus</i>	Myrtaceae	Fl A
4065	70c	Waratah, <i>Telopea speciosissima</i>	Proteaceae	Fl A
4066	70c	Golden Wattle, <i>Acacia pycnantha</i>	Fabaceae	Fl A
4067	70c	Common Heath, <i>Epacris impressa</i>	Ericaceae	Fl A
AUSTRIA		2014 March 20 (Silk-screened on Porcelain)		
2492	590c	Rose, <i>Rosa x hybrida</i>	Rosaceae	Fl A
		2014 May 3 (Wachau Wine Region)		
2498	62c	Grapes and leaf, <i>Vitis vinifera</i>	Vitaceae	Fr V B
BANGLADESH		2013 September 16 (International Ozone Day)		
819	10t	Daisies, <i>Leucanthemum vulgare</i>	Asteraceae	Fl B
BURKINA FASO		2012 November 2012 (Riches of the Forest)		
1350	100fr	Jujubes, <i>Ziziphus jujuba</i>	Rhamnaceae	Fr A
1351	200fr	Le kaga, <i>Detarium microcarpa</i>	Fabaceae	Fr A
1352	500fr	Karité, Shea Nuts, <i>Vitellaria paradoxa</i>	Sapotaceae	Fr A
1353	1500fr	Plums, <i>Sclerocarya birrea</i>	Anacardiaceae	Fr A
CANADA		2014 April 13 (Roses)		
2727a	(85c)	Konrad Henkel Rose, <i>Rosa</i> 'Konrad Henkel'	Rosaceae	Fl A SS
2727b	(85c)	Maid of Honor Rose, <i>Rosa</i> 'Maid of Honour'	Rosaceae	Fl A SS
2728	(85c)	Konrad Henkel Rose, <i>Rosa</i> 'Konrad Henkel'	Rosaceae	Fl A
2729	(85c)	Maid of Honor Rose, <i>Rosa</i> 'Maid of Honour'	Rosaceae	Fl A
2730	(85c)	Konrad Henkel Rose, <i>Rosa</i> 'Konrad Henkel'	Rosaceae	Fl A
2731	(85c)	Maid of Honor Rose, <i>Rosa</i> 'Maid of Honour'	Rosaceae	Fl A
CHINA (Taiwan)		2014 March 27 (Berries type of 2012, see <i>Plants on Stamps</i> Vol.5, p.36)		
4164	\$5	Goji Berry, <i>Lycium chinense</i>	Solanaceae	Fr A
4165	\$5	Flax Lily, <i>Dianella ensifolia</i>	Xanthorrhoeaceae	Fr A
4166	\$15	Porcelain Vine, <i>Ampelopsis glandulosa</i> var. <i>hancei</i> (= <i>A. brevipedunculata</i> var. <i>hancei</i>)	Vitaceae	Fr A
4167	\$34	Striped cucumber, <i>Diplocyclos palmatus</i>	Cucurbitaceae	Fr A
CROATIA		2014 April 1 (University of Zagreb Botanical Garden, 125th anniv.)		
900	11k	Roses, <i>Rosa</i> sp.	Rosaceae	Fl Z SS

CROATIA (continued)		2014 April 11 (Orchids)			
903	2.80k	<i>Ophrys fuciflora</i> (= <i>dinarica</i>)	Orchidaceae	Fl	A
904	2.80k	<i>Serapias neglecta</i> ssp. <i>apulica</i> (= <i>S. istriaca</i>)	Orchidaceae	Fl	A
905	3.10k	<i>Ophrys sphegodes</i> (= <i>liburnica</i>)	Orchidaceae	Fl	A
CYPRUS		2014 January 30 (Olive Production)			
1199	34c	Olive tree and grove, <i>Olea europaea</i>	Oleaceae	T	A
1200a	51c	Olives, <i>Olea europaea</i>	Oleaceae	Fr	A
1200b	51c	Olives and oil, <i>Olea europaea</i>	Oleaceae	Fr	A
1200		Horiz pair (Sc#1200a–b)			
FRENCH POLYNESIA		2014 January 20 (New Banknotes)			
1115	10fr	Plumeria, <i>Plumeria rubra</i>	Apocynaceae	Fl	V B
		Yam, <i>Dioscorea</i> sp.	Dioscoreaceae	Fl	V B
GHANA		2012 February 28 (Fruit & Vegetables type of 2012, see Vol. 63(1 & 2))			
2719	10p	Pawpaw/Papaya, <i>Carica papaya</i>	Caricaceae	Fr	A
2720	25p	Pineapples, <i>Ananas comosus</i>	Bromeliaceae	Fr	A
2723	1.10ce	Tomatoes, <i>Lycopersicon esculentum</i>	Solanaceae	Fr	A
2724	1.20ce	Shallots, <i>Allium cepa</i>	Amaryllidaceae	V	A
2726	1.40ce	Mangoes, <i>Mangifera indica</i>	Anacardiaceae	Fr	A
GIBRALTAR		2014 February 19 (World War I Centenary)			
1436–41		Poppies, <i>Papaver rhoeas</i>	Papaveraceae	Fl	B
GUATEMALA		2014 January 13 (Guatemala Fir)			
681a	5q	Grove of trees, <i>Abies guatemalensis</i>	Pinaceae	T	A
681b	5q	Cones on tree, <i>Abies guatemalensis</i>	Pinaceae	Fr	A
681		Horiz pair (Sc#681a–b)			
		2014 March 4 (Native Cuisine)			
683	2q	Plantains in mole sauce, <i>Musa x paradisiaca</i>	Musaceae	Fr	B
LATVIA		2014 January 2 (Flowers)			
850	3c	Narcissus, <i>Narcissus pseudonarcissus</i>	Amaryllidaceae	Fl	A
851	47c	Crocuses, <i>Crocus autumnale</i>	Amaryllidaceae	Fl	A
852	57c	Pansies, <i>Viola x wittrockiana</i>	Violaceae	Fl	A
853	78c	Cornflowers, <i>Cyanus segetum</i>	Asteraceae	Fl	A
854	85c	Poppies, <i>Papaver rhoeas</i>	Papaveraceae	Fl	A
855	€1.25	Asters, <i>Aster hybridus</i>	Asteraceae	Fl	A
		2014 March 22 (Flowers)			
867	1c	Daisies, <i>Bellis</i> sp.	Asteraceae	Fl	A
868	4c	Hepatica, <i>Hepatica nobilis</i>	Ranunculaceae	Fl	A
869	7c	Marigolds, <i>Tagetes erecta</i>	Asteraceae	Fl	A
870	50c	Lily of the Valley, <i>Convallaria majalis</i>	Asparagaceae	Fl	A
LIECHTENSTEIN		2014 June 2 (Flowers)			
1612	100rp	Siberian Iris, <i>Iris sibirica</i>	Iridaceae	Fl	A
1613	280rp	Marsh Grass-of-Parnassus, <i>Parnassia palustris</i>	Celastraceae	Fl	A
1614	360rp	Bog-bean, <i>Menyanthes trifoliata</i>	Menyanthaceae	Fl	A

NEVIS		2013 August 26 (Flowers of Thailand)			
1767a	\$2.50	Pineapple, <i>Ananas comosus</i>	Bromeliaceae	Fr A MS	
1767b	\$2.50	Papayas, <i>Carica papaya</i>	Caricaceae	Fr A MS	
1767c	\$2.50	Red Pineapple, <i>Ananas comosus</i>	Bromeliaceae	Fr A MS	
1767d	\$2.50	Plumeria, <i>Plumeria rubra</i>	Apocynaceae	Fl A MS	
1767e	\$2.50	Magnolia, <i>Magnolia grandiflora</i>	Magnoliaceae	Fl A MS	
1767f	\$2.50	Camellia, <i>Camellia japonica</i>	Theaceae	Fl A MS	
1768	MS \$9	Bromeliad, <i>Guzmania erythrolepis</i>	Bromeliaceae	Fl A SS	
NEW CALEDONIA		2013 September 10 (Orchids)			
1169a	110fr	<i>Eria karicouyensis</i>	Orchidaceae	Fl A MS	
1169b	110fr	<i>Earina deplanchei</i>	Orchidaceae	Fl A MS	
1169c	110fr	<i>Eriaxis rigida</i>	Orchidaceae	Fl A MS	
1169d	110fr	<i>Dendrobium poissonianum</i>	Orchidaceae	Fl A MS	
NEW ZEALAND		2014 May 7 (Personalized Greeting Stamps)			
2528b	80c	Fern fiddlehead		V A U	
2528		Sheet of 8+4 labels (Sc#2528a-h)			
2529b	\$2	Fern fiddlehead		V A U	
2529		Sheet of 4+2 labels (Sc#2529a-d)			
		2014 July 2 (Landmarks)			
2532a	80c	Sculptures of peaches, Cromwell, <i>Prunus persica</i>	Rosaceae	Fr A	
2532c	80c	Kiwi fruit slice statue, Te Puke, <i>Actinidia deliciosa</i>	Actinidiaceae	Fr A	
2532g	80c	Carrot statue, Ohakune, <i>Daucus carota</i>	Apiaceae	V A	
2532		Sheet of 18+label (Sc#2532a-r)			
NIGER		2013 July 1 (Cezanne Painting)			
1241d	750fr	Apples and Oranges, <i>Malus domestica</i> ; <i>Citrus sinensis</i>	Rosaceae; Rutaceae	Fr A M	
1241		MS of 4 (Sc#1241a-d)			
PALAU		2013 January 8 (Paintings of Paul Signac)			
1129b	\$1.50	The Pine, Saint Tropez, <i>Pinus pinea</i>	Pinaceae	T A MS	
1129		Sheet of 3 (Sc#1129a-c)			
		2013 December 18 (Moth Orchids)			
1187a	\$1	<i>Phalaenopsis</i>	Orchidaceae	Fl A MS	
1187b	\$1	<i>Phalaenopsis</i>	Orchidaceae	Fl A MS	
1187c	\$1	<i>Phalaenopsis</i>	Orchidaceae	Fl A MS	
1187d	\$1	<i>Phalaenopsis</i>	Orchidaceae	Fl A MS	
1187e	\$1	<i>Phalaenopsis</i>	Orchidaceae	Fl A MS	
1187f	\$1	<i>Phalaenopsis</i>	Orchidaceae	Fl A MS	
1187		MS of 6 (Sc#1187a-f)			
1188	SS \$3.50	Lady's Slipper, <i>Cypripedium</i> sp.	Orchidaceae	Fl A SS	
PALESTINIAN AUTHORITY		2012 June 6 (Cultivated Fruit)			
203a	150f	Grapes, <i>Vitis vinifera</i>	Vitaceae	Fr A MS	
203b	300f	Oranges, <i>Citrus sinensis</i>	Rutaceae	Fr A MS	
203c	350f	Bananas, <i>Musa x paradisiaca</i>	Musaceae	Fr A MS	
203d	400f	Dates, <i>Phoenix dactylifera</i>	Arecaceae	Fr A MS	
203		MS of 8 (2ea Sc#203a-d)			

PAPUA NEW GUINEA**2013 April 10 (Root Crops)**

1685	1.30k	Cassava, <i>Manihot esculenta</i>	Euphorbiaceae	V A
1686	1.30k	Chinese Taro, <i>Xanthosoma sagittifolium</i>	Dioscoreaceae	V A
1687	6k	Sweet Potatoes, <i>Ipomoea batatas</i>	Convolvulaceae	V A
1688	8.70k	Taro, <i>Colocasia esculentum</i>	Araceae	V A
1689a	1.30k	Five-leaflet Yam, <i>Dioscorea pentaphylla</i>	Dioscoreaceae	V A MS
1689b	1.30k	Lesser Yam, <i>Dioscorea esculenta</i>	Dioscoreaceae	V A MS
1689c	6k	Greater Yam, <i>Dioscorea alata</i>	Dioscoreaceae	V A MS
1689d	8.70k	Nummularia Yam, <i>Dioscorea nummularia</i>	Dioscoreaceae	V A MS
1689		MS of 4 (Sc#1689a–d)		
1690	SS 10k	Queensland Arrowroot, <i>Canna edulis</i>	Cannaceae	V A SS

2013 May 24 (Orchids)

1691	1.30k	<i>Dendrobium gouldii</i>	Orchidaceae	Fl A
1692	1.30k	<i>Dendrobium lineale</i> var. Kui Island	Orchidaceae	Fl A
1693	6k	<i>Dendrobium mirbelianum</i>	Orchidaceae	Fl A
1694	8.70k	<i>Dendrobium</i> sp. aff. <i>D. cochiliodes</i>	Orchidaceae	Fl A
1695a	1.30k	<i>Dendrobium</i> sp. aff. <i>D. gouldii</i>	Orchidaceae	Fl A MS
1695b	1.30k	<i>Dendrobium</i> sp. aff. <i>D. conanthurum</i>	Orchidaceae	Fl A MS
1695c	6k	<i>Dendrobium lineale</i>	Orchidaceae	Fl A MS
1695d	8.70k	<i>Dendrobium carronii</i>	Orchidaceae	Fl A MS
1695		MS of 4 (Sc#1695a–d)		
1696	SS 10k	<i>Dendrobium mussauense</i>	Orchidaceae	Fl A SS

2013 August 21 (Coconuts)

1709	4k	Green coconuts, <i>Cocos nucifera</i>	Arecaceae	Fr A
1710	6k	Coconut husking, <i>Cocos nucifera</i>	Arecaceae	Fr A
1711	8.70k	Coconut juice, <i>Cocos nucifera</i>	Arecaceae	Fr A
1712	12k	Coconut meat, <i>Cocos nucifera</i>	Arecaceae	Fr A
1713a	1k	Dry coconut, <i>Cocos nucifera</i>	Arecaceae	Fr A MS
1713b	1.30k	Inner shell, <i>Cocos nucifera</i>	Arecaceae	Fr A MS
1713c	6k	Meat, <i>Cocos nucifera</i>	Arecaceae	Fr A MS
1713d	8.70k	Coconut cotyledon “apple,” <i>Cocos nucifera</i>	Arecaceae	Fr A MS
1713		MS of 4 (Sc#1713a–d)		
1714	SS 10k	Inner shell, new shoot, <i>Cocos nucifera</i>	Arecaceae	Fr A SS

PARAGUAY**2011 December 13 (Intl Year of Forests)**

2921	5000g	Animals and forest		T S
2922	6000g	Trees and map of Americas		T B U

2012 June 26 (50yr Diplomatic relations with South Korea)

2937	2000g	Dancers & national flowers, <i>Hibiscus syriacus</i>	Malvaceae	Fl B SS Z
		<i>Brunfelsia</i> sp.	Solanaceae	Fl B SS Z

2012 August 22 (75yr Economics Faculty, National Univ. of Asuncion)

2948	1400g	U/I tree		T A U
------	-------	----------	--	-------

2012 November 13 (20yr Independence of Slovakia)

2952	11000g	Large-leaved Linden, <i>Tilia platyphyllos</i>	Malvaceae	Fl A
------	--------	--	-----------	------

2012 November 29 (50yr Nanduti Radio)

2955	1400g	Chinaberry Tree, <i>Melia azedarach</i>	Meliaceae	Fl T A
------	-------	---	-----------	--------

PHILIPPINES**2012, December 7** (Reforestation, 75yr Leparto Mining Corp.)

3455a	7p	U/I trees			T A U
3455		Horiz pair (Sc#3455a-b)			

2013 March 13 (Pitcher Plants)

3465a	10p	<i>Nepenthes peltata</i>	Nepenthaceae	V A MS	
3465b	10p	<i>Nepenthes truncata</i>	Nepenthaceae	V A MS	
3465c	10p	<i>Nepenthes x burkei</i>	Nepenthaceae	V A MS	
3465d	10p	<i>Nepenthes attenboroughii</i>	Nepenthaceae	V A MS	
3465		MS of 4 (Sc#3465a-d)			
3466a	10p	<i>Nepenthes mindanaoensis</i>	Nepenthaceae	V A MS	
3466b	10p	<i>Nepenthes sibuyanensis</i>	Nepenthaceae	V A MS	
3466c	10p	<i>Nepenthes mira</i>	Nepenthaceae	V A MS	
3466d	10p	<i>Nepenthes mantalingajanensis</i>	Nepenthaceae	V A MS	
3466		MS of 4 (Sc#3466a-d)			

2013 April 15 (Edible Nuts & Seeds)

3469a	10p	Cashews, <i>Anacardium occidentale</i>	Anacardiaceae	Fr A	
3469b	10p	Pili Nuts, <i>Canarium ovatum</i>	Burseraceae	Fr A	
3469c	10p	Watermelon seeds, <i>Citrullus lanatus</i>	Cucurbitaceae	Fr A	
3469d	10p	Peanuts, <i>Arachis hypogea</i>	Fabaceae	Fr A	
3469		MS of 4 (Sc#3469a-d)			
3470a	10p	Sunflower seeds, <i>Helianthus annuus</i>	Asteraceae	Fr A SS	
3470b	10p	Mung beans, <i>Vigna radiata</i>	Fabaceae	Fr A SS	
3470c	10p	Coffee beans, <i>Coffea arabica</i>	Rubiaceae	Fr A SS	
3470d	10p	Squash seeds, <i>Cucurbita pepo</i>	Cucurbitaceae	Fr A SS	
3470		MS of 4 (Sc#3470a-d)			

2013 September 9 (Logo for Boysen Paints, 60th anniv.)

3496a	10p	Stylized tree			T A S
3496		Block of 4 (Sc#3496a-d)			

2013 December 20 (50yr Diplomatic relations with Nigeria, Vol. 63(2))

3511a	10p	Nigerian national flower, <i>Mesembryanthemum</i> sp.	Aizoaceae	Fl B	
3511b	45p	Philippine national flower, Sampaguita, <i>Jasminum sambac</i>	Lauraceae	Fl B	
3511		Horiz pair (Sc#3511a-b)			

PITCAIRN ISLAND**2014 June 12** (Flora)

774	20c	Sea mango, <i>Cerbera manghas</i>	Apocynaceae	Fl A	
775	\$1	Yellow Purslane, <i>Portulaca lutea</i>	Portulacaceae	Fl A	
776	\$1.80	Canna, <i>Canna</i> sp.	Cannaceae	Fl A	
777	\$2	<i>Euphorbia</i> (= <i>Chamaesyce</i>) <i>sparrmannii</i>	Euphorbiaceae	Fl A	
778	\$2.10	<i>Coprosma benefica</i>	Rubiaceae	Fl A	
779	\$3	Thatch Screwpine, <i>Pandanus tectorius</i>	Pandanaceae		

POLAND**2013 July 18** (Regional Productivity)

4086	4.60z	Strawberry, <i>Fragaria x ananassa</i>	Rosaceae	Fr A	
------	-------	--	----------	------	--

2013 October 18 (World Post Day)

4098	4.60z	Slice of wood			V A U
------	-------	---------------	--	--	-------

ROMANIA**2013 April 22** (Earth Day)

5440	5L	Lotus, <i>Nelumbo nucifera</i>	Nelumbonaceae	Fl B	
------	----	--------------------------------	---------------	------	--

ROMANIA (continued)**2013 June 7** (Healthy Foods)

5450	1L	Walnuts, <i>Juglans regia</i>	Juglandaceae	Fr V A
		Cinnamon sticks, <i>Cinnamomum verum</i>	Lauraceae	Fr V A
5451	1.40L	Hazelnuts, <i>Corylus avellana</i>	Betulaceae	Fr A
5452	6L	Raspberries and blackberries, <i>Rubus idaeus</i> ; <i>R. fruticosus</i>	Rosaceae	Fr A
5453	10L	Walnuts, <i>Juglans regia</i>	Juglandaceae	Fr V A
		Cinnamon sticks, <i>Cinnamomum verum</i>	Lauraceae	Fr V A
		Hazelnuts, <i>Corylus avellana</i> ;	Betulaceae	Fr V A
		Raspberries and blackberries, <i>Rubus idaeus</i> ; <i>R. fruticosus</i>	Rosaceae	Fr A

2013 June 21 (Flowers & Clocks type of 2013)

5454	50b	<i>Anthericum ramosum</i>	Asparagaceae	Fl B
5455	1.20L	Four-o'clock, <i>Mirabilis jalapa</i>	Nyctaginaceae	Fl B
5456	1.40L	Jimson Weed, <i>Datura stramonium</i>	Solanaceae	Fl B
5457	3L	White Campion, <i>Silene latifolia</i>	Caryophyllaceae	Fl B
5458	3.10L	Winged Tobacco, <i>Nicotiana glauca</i>	Solanaceae	Fl B
5459	4.70L	Evening primrose, <i>Oenothera biennis</i>	Onagraceae	Fl B

2013 December 12 (Paintings of Roses)

5501	1L	Ptg. by Nicolae Grigorescu, <i>Rosa</i> sp.	Rosaceae	Fl A
5502	3.60L	Ptg. by Theodor Aman, <i>Rosa</i> sp.	Rosaceae	Fl A
5503	4.50L	Ptg. by Stefan Luchian, <i>Rosa</i> sp.	Rosaceae	Fl A
5504	14.50L	Ptg. by Ion Andreescu, <i>Rosa</i> sp.	Rosaceae	Fl A

ST. LUCIA**2013** (Fruit & Nuts type of 2005, dated "2013")

1217b	30c	Seagrape, <i>Coccoloba uvifera</i>	Polygonaceae	Fr A
-------	-----	------------------------------------	--------------	------

ST. MARTIN**2014 April 9** (Flowers)

54a	10c	Crêpe Ginger, <i>Costus speciosus</i>	Zingiberaceae	Fl A MS
54b	20c	Cardoon, <i>Cynara cardunculus</i>	Asteraceae	Fl A MS
54c	50c	Pastor's Orchid, <i>Dendrobium macrophyllum</i>	Orchidaceae	Fl A MS
54d	70c	<i>Disa diodes</i>	Orchidaceae	Fl A MS
54e	90c	Hibiscus, <i>Hibiscus rosa-sinensis</i>	Malvaceae	Fl A MS
54f	100c	Red Hot Poker, <i>Kniphofia</i> sp.	Xanthorrhoeaceae	Fl A MS
54g	150c	Edelweiss, <i>Leontopodium alpinum</i>	Asteraceae	Fl A MS
54h	210c	<i>Phalaenopsis chibae</i>	Orchidaceae	Fl A MS
54i	300c	<i>Phalaenopsis schilleriana</i>	Orchidaceae	Fl A MS
54j	350c	<i>Rhynchostylis coelestis</i>	Orchidaceae	Fl A MS
54k	400c	Pink Quill, <i>Tillandsia cyanea</i>	Bromeliaceae	Fl A MS
54l	650c	<i>Vanda coerulea</i>	Orchidaceae	Fl A MS
54		Sheet 12 (Sc#54a-l)		

ST. PIERRE & MIQUELON**2013 December 7** (Christmas)

990	63c	Flower bouquet		Fl A U
-----	-----	----------------	--	--------

ST. VINCENT**2014 February 6** (Garden Flowers)

3912a	\$6.25	Great Bougainvillea, <i>Bougainvillea spectabilis</i>	Nyctaginaceae	Fl A MS
3912b	\$6.25	Hibiscus, <i>Hibiscus rosa-sinensis</i>	Malvaceae	Fl A MS
3912c	\$6.25	Iris, <i>Iris x hybrida</i>	Iridaceae	Fl A MS
3912		MS of 3 (Sc#3912a-c)		
3913a	\$9.50	Peony, <i>Paeonia officinalis</i>	Paeoniaceae	Fl A SS
3913b	\$9.50	Tulip, <i>Tulipa x hybrida</i>	Liliaceae	Fl A SS
3913		SS of 2 (Sc#3913a-b)		

SERBIA**2012 October 1** (Children's Week Postal Tax)

RA53 10d U/I flowers FI A U

SIERRA LEONE**2013 September 9** (History of Art)

3175a 5000le Ptg. by Henri Rousseau: fruit Fr B U MS

3175c 5000le Ptg. by Henri Rousseau: flowers FI B U MS

3175 MS of 4 (Sc#3175a-d)

3176a 6000le "The Yellow Tree," by Emile Bernard T A U MS

3176b 6000le "Woman Holding Fruit," by P. Gauguin Fr B U MS

3176c 6000le "Vase with Oleanders and Books," by Van Gogh, *Nerium oleander* Apocynaceae FI B MS

3176 MS of 3 (Sc#3176a-c)

2013 November 18 (Brasiliana 2013 World Stamp Exhibition)

3188c 5000le Amazon rainforest T A U MS

SINGAPORE**2013 July 13** (Our City in a Garden)Biodegradable stamps with *Portulaca* seeds affixed.1608 (26c) Lion-like *Dendrobium*, *Dendrobium leonis*; Orchidaceae FI B
Moss Rose, *Portulaca grandiflora* Portulacaceae FI B1609 50c *Cymbidium bicolor* Orchidaceae FI B1610 80c Ferns, Crepe myrtle, *Lagerstroemia indica* Lythraceae FI BHeliconias, *Heliconia* sp. Heliconiaceae FI BTiger Orchid, *Grammatophyllum speciosum* Orchidaceae FI B1611 \$1.10 Staghorn Fern, *Platynerium* sp. Polypodiaceae FI BCannonball flower, fruit, *Couroupita guianensis* Lecythidaceae FI BYellow Flame, *Peltophorum pterocarpum* Fabaceae FI BAngsana trees, *Pterocarpus indicus* Fabaceae T BRain trees, *Samanea saman* Fabaceae T B

1612 SS \$5 Composite of Sc#1608-11

1613a (26c) Lion-like *Dendrobium*, *Dendrobium leonis*; Orchidaceae FI BMoss Rose, *Portulaca grandiflora* Portulacaceae FI B1613b 50c *Cymbidium bicolor* Orchidaceae FI B

1613 Sheet of 4 (2ea Sc#1613a-b) (die cut 12½)

2013 October 16 (Vanishing Trades)

1630 5c Nut and legume seller Fr B U

2013 November 8 (Fashion)1642 \$1.10 Miss Joaquim orchid, *Vanda* 'Miss Joaquim' Orchidaceae FI B**2014 February 26** (Ferns)1654 (26c) *Angiopteris evecta* Marattiaceae V A1655 50c *Angiopteris evecta* Marattiaceae V A1656 80c *Cibotium barometz* Cibotiaceae V A1657 \$1 *Cibotium barometz* Cibotiaceae V A1658 \$1 *Cibotium barometz* Cibotiaceae V A**SLOVENIA****2014 March 26** (Old Grapevines in Various Locations)1034-36 Grapevines, *Vitis vinifera* Vitaceae V A1037 SS 97c Grapevines, *Vitis vinifera* Vitaceae V A SS

SOLOMON ISLANDS**2012 June 5 (Orchids)**

1167a	\$9	<i>Cattleya (=Laelia) harpophylla</i>	Orchidaceae	Fl A MS
1167b	\$9	<i>Cypripedium parviflorum</i>	Orchidaceae	Fl A MS
1167c	\$9	<i>Chysis bractescens</i>	Orchidaceae	Fl A MS
1167d	\$9	<i>Laelia anceps</i>	Orchidaceae	Fl A MS
1167e	\$27	<i>Cypripedium parviflorum</i> var. <i>pubescens</i> (= <i>C. pubescens</i>)	Orchidaceae	Fl A MS

SOUTH AFRICA**2013 July 1 (Kirstenbosch National Botanical Garden Centenary)**

1496a	(2.90r)	Silver tree, <i>Leucadendron argenteum</i>	Proteaceae	T A MS
1496b	(2.90r)	Natal Lily, <i>Crinum moorei</i>	Amaryllidaceae	Fl A MS
1496c	(2.90r)	Centenary Gold <i>Strelitzia</i> , <i>Strelitzia juncea</i> 'Centenary Gold'	Strelitziaceae	Fl A MS
1496d	(2.90r)	Krantz Aloe, <i>Aloe arborescens</i>	Xanthorrhoeaceae	Fl A MS
1496e	(2.90r)	Ninepin Heath, <i>Erica mammosa</i>	Ericaceae	Fl A MS
1496f	(2.90r)	Silver Restio, <i>Thamnochortus cinereus</i>	Restionaceae	Fl A MS
1496g	(2.90r)	Albany Cycad, <i>Encephalartos latifrons</i>	Cycadaceae	V A MS
1496h	(2.90r)	Welwitschia, <i>Welwitschia mirabilis</i>	Welwitschiaceae	V A MS
1496i	(2.90r)	White Gardenia, <i>Gardenia thunbergia</i>	Rubiaceae	Fl A MS
1496j	(2.90r)	King Protea, <i>Protea cynaroides</i>	Proteaceae	Fl A MS
1496		MS of 10 (Sc#1496a–j)		

2013 December 12 (Union Buildings Centenary)

1518d	(2.90r)	Discovery of new species, <i>Aloe pretoriensis</i>	Xanthorrhoeaceae	Fl A MS
1518		MS of 10 (Sc\$1518a–j)		

SRI LANKA**2012 March 10 (Peonies)**

1827a–b	30r	Peonies, <i>Paeonia officinalis</i>	Paeoniaceae	Fl A
---------	-----	-------------------------------------	-------------	------

2013 November 14 (Commonwealth Heads of Government Meeting)

1911	5r	Girl with red and purple flowers		Fl B U
1912	25r	Girl with blue and green flowers		Fl B U
1912a		SS of 2 (Sc#1911–12)		

SURINAM**2013 August 14 (Fruit)**

1454a	\$1.75	Custard Apple, <i>Annona muricata</i>	Annonaceae	Fr A MS
1454b	\$2.25	Cacao, <i>Theobroma cacao</i>	Malvaceae	Fr A MS
1454c	\$4.75	Star Fruit, <i>Averrhoa carambola</i>	Oxalidaceae	Fr A MS
1454d	\$5.25	Star Apple, <i>Chrysophyllum cainito</i>	Sapotaceae	Fr A MS
1454e	\$6.75	Papaya, <i>Carica papaya</i>	Caricaceae	Fr A MS
1454f	\$8.25	Watermelon, <i>Citrullus lanatus</i>	Cucurbitaceae	Fr A MS
1454g	\$9.75	Avocado, <i>Persea americana</i>	Lauraceae	Fr A MS
1454h	\$11.25	Malay Rose Apple, <i>Syzygium malaccense</i>	Myrtaceae	Fr A MS
1454		MS of 8+labels (Sc#1454a–h)		

2013 November 10 (Unity)

1458	\$1.25	Kapok, <i>Ceiba pentandra</i>	Malvaceae	T A
------	--------	-------------------------------	-----------	-----

2014 March 12 (Flowers)

1462	B	<i>Dendrobium nobile</i>	Orchidaceae	Fl A MS
1463	\$1.45	Day Lilies, <i>Hemerocallis fulva</i>	Xanthorrhoeaceae	Fl A MS
1464	\$2	<i>xLaeliocattleya</i>	Orchidaceae	Fl A MS
1465	\$2.50	<i>Lycaste cruenta</i>	Orchidaceae	Fl A MS
1466	\$3.50	Bee Orchid, <i>Ophrys apifera</i>	Orchidaceae	Fl A MS
1467	\$4.50	<i>Paphiopedilum</i>	Orchidaceae	Fl A MS
1468	\$5	<i>Phalaenopsis fuscata</i>	Orchidaceae	Fl A MS

SURINAM (continued)

1469	\$5.50	<i>xSophrolaeliocattleya</i>	Orchidaceae	Fl A MS
1470	\$7	<i>Vanda arcuata</i>	Orchidaceae	Fl A MS
1471	\$8	<i>Vanda bensonii</i>	Orchidaceae	Fl A MS

SWEDEN**2014 May 8** (Summer greetings)

2729a	(7k)	Flowers in paper airplane		Fl B U
2729e	(7k)	Bouquet of flowers		Fl B U
2729		Vert. strip of 5 (Sc#2729a–e)		
2729f		Bklt pane 10 (2ea Sc#2729a–e)		

TAJIKISTAN**2012 October 25** (Flowers & Butterflies)

390a	1.60s	Rose and grasshopper, <i>Rosa x hybrida</i>	Rosaceae	Fl A
390b	2.50s	Golden daisy and butterfly	Asteraceae	Fl A
390c	3s	Golden daisy and butterfly	Asteraceae	Fl A
390d	3s	Rose and ladybug, <i>Rosa x hybrida</i>	Rosaceae	Fl A
390		Block of 4 (Sc#390a–d)		
391a	1.60s	Butterfly on flower		Fl B U
391b	2.50s	Butterfly on flower		Fl B U
391c	3s	Butterfly on flower		Fl B U
391d	3s	Butterfly on flower		Fl B U
391		Block of 4 (Sc#391a–d)		

TANZANIA**2013 August 26** (Fruit)

2694a	1500sh	Watermelon, <i>Citrullus lanatus</i>	Cucurbitaceae	Fr A MS
2694b	1500sh	Calabashes, <i>Lagenaria siceraria</i>	Cucurbitaceae	Fr A MS
2694c	1500sh	Passion Fruit, <i>Passiflora quadrangularis</i>	Passifloraceae	Fr A MS
2694d	1500sh	Horned Melons, <i>Cucumis metuliferus</i>	Cucurbitaceae	Fr A MS
2694e	1500sh	Figs, <i>Ficus carica</i>	Moraceae	Fr A MS
2694f	1500sh	Safous, <i>Dacryodes edulis</i>	Bursaceae	Fr A MS
2695	SS 5500sh	Single stamp depicting all the above fruits		

TONGA (Niufo'ou)**2013 September 6** (Flowers & Butterflies, white frames)

301	20s	Jasmine, <i>Jasminum grandiflorum</i>	Oleaceae	Fl A
302	30s	Hibiscus, <i>Hibiscus rosa-sinensis</i>	Malvaceae	Fl A
303	40s	Elder, <i>Sambucus nigra</i>	Caprifoliaceae	Fl A
304	50s	Heilala, <i>Garcinia sessilis</i>	Clusiaceae	Fl A
305	60s	Blue Wild Indigo, <i>Baptisia australis</i>	Fabaceae	Fl A
306	80s	Purple Coneflowers, <i>Echinacea purpurea</i>	Asteraceae	Fl A
307	90s	Yellow Bell, <i>Allamanda cathartica</i>	Apocynaceae	Fl A
308	1.10pa	Frangipani, <i>Plumeria rubra</i>	Apocynaceae	Fl A
309	1.20pa	Tahitian Gardenia, <i>Gardenia taitensis</i>	Rubiaceae	Fl A
310	10pa	Frangipani, <i>Plumeria rubra</i>	Apocynaceae	Fl A
311	12.50pa	Hibiscus, <i>Hibiscus rosa-sinensis</i>	Malvaceae	Fl A
312	20pa	Tahitian Vanilla Orchid, <i>Vanilla planifolia</i>	Orchidaceae	Fl A

2013 September 6 (Flowers & butterflies, MS with blue frames)

313a	20s	Jasmine, <i>Jasminum grandiflorum</i>	Oleaceae	Fl A MS
313b	30s	Hibiscus, <i>Hibiscus rosa-sinensis</i>	Malvaceae	Fl A MS
313c	40s	Elder, <i>Sambucus nigra</i>	Caprifoliaceae	Fl A MS
313d	50s	Heilala, <i>Garcinia sessilis</i>	Clusiaceae	Fl A MS
313e	60s	Blue Wild Indigo, <i>Baptisia australis</i>	Fabaceae	Fl A MS

TONGA (Niuafu'ou) (continued)

313f	80s	Purple Coneflowers, <i>Echinacea purpurea</i>	Asteraceae	Fl A MS
313g	90s	Yellow Bell, <i>Allamanda cathartica</i>	Apocynaceae	Fl A MS
313h	1.10pa	Frangipani, <i>Plumeria rubra</i>	Apocynaceae	Fl A MS
313i	1.20pa	Tahitian Gardenia, <i>Gardenia taitensis</i>	Rubiaceae	Fl A MS
313j	10pa	Frangipani, <i>Plumeria rubra</i>	Apocynaceae	Fl A MS
313k	12.50pa	Hibiscus, <i>Hibiscus rosa-sinensis</i>	Malvaceae	Fl A MS
313l	20pa	Tahitian Vanilla Orchid, <i>Vanilla planifolia</i>	Orchidaceae	Fl A MS
313		MS of 12 (Sc#313a-l) (stamps with blue frames)		

TURKEY**2013 March 21** (World Down Syndrome Day)

3335c	2.20L	Children in field of flowers, <i>Leucanthemum vulgare</i>	Asteraceae	Fl B MS Z
3335		SS of 3 (Sc#3335a-c)		

2013 August 16 (Cuisine of Central Anatolia)

3352a	1.10L	Tomato, vegetables, etc., <i>Lycopersicon esculentum</i>	Solanaceae	Fr B MS
3352b	1.10L	Wheat stalk, plate of food, <i>Triticum vulgare</i>	Poaceae	Fr B MS
3352c	1.10L	Scallions, etc., <i>Allium cepa</i>	Amaryllidaceae	V B MS
3352c	1.10L	Radishes, etc., <i>Raphanus sativus</i>	Brassicaceae	V B MS
3352d	1.10L	Grapes, etc., <i>Vitis vinifera</i>	Vitaceae	Fr B MS
3352		SS of 4 (Sc#3352a-d)		

2013 May 29 (Bey pazari District)

B305	1.10L+50k	Carrots, <i>Daucus carota</i>	Apiaceae	V B
------	-----------	-------------------------------	----------	-----

NEW PLANT IDENTIFICATION**Cathie L. Stumpenhous, BU1471**

On 16 December 1986, Costa Rica issued a set of stamps depicting Fauna and Flora (Sc#377–85). The second stamp in this set (3 Col) shows the nectar-feeding bat *Glossophaga soricina*. In addition, this stamp also clearly shows the fruit on which this bat is feeding.

A little internet sleuthing uncovered a readily comparable photograph of this species of bat feeding from the same plant shown on the stamp.

<http://aob.oxfordjournals.org/content/104/6/1017/F2.expansion.html>



The article associated with the web page identifies the plant as *Mabea occidentalis*. This plant is native to Costa Rica and belongs to the family Euphorbiaceae. It does not appear that this species, or the genus *Mabea*, has previously received a listing in *Biophilately*.



Glossophaga soricina
Costa Rica Sc#378

Reference: Theodore H. Fleming, Cullen Geiselman, and W. John Kress. The evolution of bat pollination: a phylogenetic perspective; *Ann Bot* (2009) 104 (6): 1017-1043 first published online September 29, 2009 doi:10.1093/aob/mcp197.



FUNGI

Editor

Paul A. Mistretta, BU1681



New Listings

Scott#	Denom	Common Name/Scientific Name	Family	Code
ARMENIA 2013 November 25 (Mushroom)				
965	230d	<i>Macrolepiota rhacodes</i>	Agaricaceae	A
966	330d	<i>Boletus edulis</i>	Boletaceae	A
966a		Se-tenant pair (Sc#965–66) Sc#965–66 were printed in sheets of 8 with 2 labels		
CHINA (Taiwan) 2013 November 22 (National Palace Museum)				
4148a	\$5	Mushrooms on a blue ?rock? (Qing Dynasty Bowl)	N/A	C
4148		Block of 6 (Sc#4148a–f)		
GERMANY 2014 February 6 (Bolete look-alike)				
2771	69c	Devil's Table, Palatine Forest (rock formation)	N/A	X
MOZAMBIQUE 2013 June 25 (Owls & Mushrooms; MS & SS)				
2906a	16m	Lawyer's Wig, <i>Coprinus comatus</i>	Agaricaceae	B
2906b	16m	Brown-ribbed Elfin Cup, <i>Peziza acetabulum</i>	Pezizaceae	B
2906c	16m	Blusher, <i>Amanita rubescens</i>	Amanitaceae	B
2906d	16m	Tawny Funnel, <i>Clitocybe inversa</i>	Tricholomataceae	B
2937	SS 175m	Field Mushroom, <i>Psalliota campestris</i>	Agaricaceae	B
2013 June 25 (Insects & Mushrooms; MS & SS)				
2909a	16m	Fawn Mushroom, <i>Agaricus cervinus</i>	Agaricaceae	B
2909b	16m	Oak-loving Collybia, <i>Agaricus dryophilus</i>	Agaricaceae	B
2909c	16m	Stocking Webcap, <i>Cortinarius torvus</i>	Cortinariaceae	B
2909d	16m	<i>Russula</i> sp.	Russulaceae	B
2939	SS 175m	Common Ink cap, <i>Coprinopsis atramentaria</i>	Psathyrellaceae	B
NIGER 2013 July 1 (Scientists/Mycologists; MS & SS)				
1237	750fr	MS of 4 (Sc#1237a–d) Dr. Albert Schweitzer	N/A	B
1238	750fr	MS of 4 (Sc#1238a–d) Louis Pasteur	N/A	B
1260	SS 2500fr	Schweitzer	N/A	B
1261	SS 2500fr	Pasteur	N/A	B
2013 July 1 (Owls & Mushrooms; MS & SS)				
1245a	750fr	U/I mushrooms	N/A	B U
1245a	750fr	Slimy Gomphidius, <i>Gomphidius glutinosus</i>	Gomphidiaceae	B
1245a	750fr	U/I mushrooms	N/A	B U
1245a	750fr	Scaly Hydnum, <i>Sarcodon imbricatus</i>	Bankeraceae	B
1268	SS 2500fr	U/I mushrooms	N/A	B U
SENEGAL 2013 December 12 (Gueumbeul Reserve)				
1711	25fr	U/I mushrooms with reptiles, birds, and flowers near pond	N/A	C U

SIERRA LEONE		2013 September 9 (Mushrooms)			
3174	16000le	Stylized (appears to be mushrooms among food items)	N/A		S
		2013 December 23 (Mushrooms; MS)			
3205a	4000le	Delicious Milk Cap, <i>Lactarius deliciosus</i>	Russulaceae		A
3205b	4000le	Amethyst Deceiver, <i>Laccaria amethystine</i>	Hydnangiaceae		A
3205c	4000le	Penny Bun, <i>Boletus edulis</i>	Boletaceae		A
3205d	4000le	Japanese Umbrella, <i>Coprinus plicatilis</i>	Agaricaceae		A
3205e	4000le	Glistening Ink Cap, <i>Coprinus micaceus</i>	Agaricaceae		A
3205f	4000le	Panther Cap, <i>Amanita pantherina</i>	Amanitaceae		A
SLOVENIA		2014 May 30 (Fungus)			
1047	[64c]	Owl with bracket fungus	N/A		C
SPAIN		2013 October 8 (Mushrooms)			
3935a	37c	Yellow Stainer, <i>Agaricus xanthodermus</i>	Agaricaceae		A
3935b	37c	Panther Cap, <i>Amanita pantherina</i>	Amanitaceae		A
3935c	37c	Scotch Bonnet, <i>Marasmius oreades</i>	Marasmiaceae		A
3935		Horiz strip of 3 (Sc#3935a-c)			
SURINAM		2014 January 15 (Mushrooms)			
1460a	\$2.50	Panther Cap, <i>Amanita pantherina</i>	Amanitaceae		A
1460b	\$5.50	<i>Cystoderma granulosum</i>	Meruliaceae		A
1460c	\$5.50	Oakbug Milkcap, <i>Lactarius quiteus</i>	Russulaceae		A
1460d	\$7.50	Conifer Roundhead, <i>Stropharia hornemannii</i>	Strophariaceae		A
1460e	\$9.50	Stinking Brittlelegill, <i>Russula foetens</i>	Russulaceae		A
1460f	\$11.50	Plums & Custard, <i>Tricholomopsis rutilans</i>	Tricholomataceae		A
1460		Block of 6 (Sc#1460a-f)			
SWITZERLAND		2014 March 6 (Mushrooms)			
1515	10c	Golden Chanterelle, <i>Cantharellus cibarius</i>	Cantharellaceae		A
1516	15c	Sooty Lactarius, <i>Lactarius lignyotus</i>	Bankeraceae		A
1517	20c	Blue Tooth, <i>Hydnellum caeruleum</i>	Russulaceae		A
1518	50c	Old Man of the Woods, <i>Strobilomyces strobilaceus</i>	Strobilomycetaceae		A
1518a		Block of 4 (Sc#1515-18) on translucent paper			
TAJIKISTAN		2013 April 11 (Mushrooms; SS)			
393b	2.50s	U/I mushrooms at base of tree	N/A		C U
393		SS of 3 (Sc#393a-c)			
UKRAINE		2013 October 14 (Mushrooms; MS)			
941d	330h	Penny Bun, <i>Boletus edulis</i>	Boletaceae		A
941		MS of 4 (Sc#941a-d)			
Missed over the last 1½ years					
CHINA (Taiwan)		2013 March 20 (Qing Dynasty Embroidery)			
4096	\$10	Identification per <i>Linn's</i> (appears to be a lotus seed head and not a mushroom)			

GHANA**2012 December 12 (Mushrooms)**

2713a	3ce	Jack-o-lantern, <i>Omphalotus olearius</i>	Marasmiaceae	A
2713b	3ce	Fly Agaric, <i>Amanita muscaria</i>	Amanitaceae	A
2713c	3ce	Death Angel, <i>Amanita phalloides</i>	Amanitaceae	A
2713		SS of 3 (Sc#2713a-c) Toxic Mushrooms		
2714a	3ce	Oyster Mushroom, <i>Pleurotus ostreatus</i>	Pleurotaceae	A
2714b	3ce	Wine-colored Agaricus, <i>Agaricus subrufescens</i>	Agaricaceae	A
2714c	3ce	Saffron Milkcap, <i>Lactarius deliciosus</i>	Russulaceae	A
2714		SS of 3 (Sc#2714a-c) Edible Mushrooms		

HONG KONG**2013 January 26 (Mushrooms; 2SS)**

1558	\$10	Stylized mushroom icon in margin	N/A	C
1559	\$50	Stylized mushroom icon in margin	N/A	C

KOREA (North)**2006 (Mushrooms)**

Note: Information in *Linn's* is inaccurate for Sc#4527-28. Scott type (A1539) is correct, but the catalog numbers given for that type are not. Sc#3159 is the catalog number for a "Year of the Rooster" stamp with no connection to fungi that I can determine.

4521	3w on 20ch	Oyster Mushroom, <i>Pleurotus ostreatus</i> (Sc#2470 surch)	Pleurotaceae	A
4527	3w on 20ch	Cracked Green Russula, <i>Russula virescens</i> (Sc#3437 surch)	Russulaceae	A
4528	3w on 20ch	Cracked Green Russula, <i>Russula virescens</i> (Sc#3437 surch)(red)	Russulaceae	A
4535	3w on 20ch	Iodine Bolete, <i>Boletus impolitus</i> (Sc#2621 surch)	Boletaceae	A
4546	3w on 50ch	Nutty Brittle Gill, <i>Russula integra</i> (Sc#2987 surch)	Russulaceae	A
4553	3w on 80ch	Lawyer's Wig, <i>Coprinus comatus</i> (Sc#3468 surch)	Agaricaceae	A
4558	3w on 1w	Many-zoned Polypore, <i>Coriolus versicolor</i> (Sc#3919 surch)	Polyporaceae	A

MOZAMBIQUE**2010 November 30 (Atomic bomb with mushroom cloud)**

2107a	66m	Mushroom cloud	N/A	X
2107d	66m	Mushroom cloud	N/A	X
2119	SS 175m	Mushroom cloud	N/A	X

NEPAL**2012 July 29 (Fungus) (see *Linn's* 5/20/13)**

873d	10r	Varnished Conk, <i>Ganoderma lucidum</i>	Ganodermataceae	A
873		Block of 8 (Sc#873a-h)		

RUSSIA**2012 December 3 (Mushroom)**

Have not seen this one except picture in *Linn's Stamp News*. May be other than the capes justifies the listing.

7418d	10r	Polka dot cloaks (Look-alike?)	N/A	S
-------	-----	--------------------------------	-----	---

[*Ed. note: There are some tiny stylized mushrooms in the lower portion of this cartoon image.*]

SLOVENIA**2013 November 22 (Christmas)**

1019	C	Santa lawn statue leaning on mushroom (? <i>Amanita muscaria</i> ?)	N/A	S
------	---	---	-----	---

And one final oversight spotted during my review of catalog numbers in the Scott's International Catalogue (compliments of our local public library) is the following, not noted in *Linn's* (predates listing of North Korea)

KOREA (North)**2003 January 1 (Mushrooms)**

4265	SS	Stylized mushrooms in margin of "Antelopes carrying basket of fruit"		C
------	----	--	--	---



MAMMALIA

Editor

Michael Prince, LM68



Scott#	Denom	Common Name/Scientific Name	Family/Subfamily
BOLIVIA 2013 July 9 (Endangered Animals)			
1557	50c	Peruvian Guemal, <i>Hippocamelus antisensis</i>	Cervidae
1558	1b	Tomes's Sword-nosed Bat, <i>Lonchorhina aurita</i>	Phyllostomidae
CANADA 2013 December 11 (Juvenile Wildlife)			
2692	63c	Woodchuck, <i>Marmota monax</i>	Sciuridae
2692A	63c	Woodchuck, <i>Marmota monax</i>	Sciuridae
2014 March 31 (Juvenile Wildlife)			
2709a	P(85c)	American Beaver, <i>Castor canadensis</i>	Castoridae
2709c	\$1.20	Mountain Goat, <i>Oreamnos americanus</i>	Bovidae
2709e	\$2.50	Red Deer (Elk), <i>Cervus elaphus</i>	Cervidae
2711	P(85c)	American Beaver, <i>Castor canadensis</i>	Castoridae
2712	\$1.20	Mountain Goat, <i>Oreamnos americanus</i>	Bovidae
2714	\$2.50	Red Deer (Elk), <i>Cervus elaphus</i>	Cervidae
2715	\$1.20	Mountain Goat, <i>Oreamnos americanus</i>	Bovidae
2717	\$2.50	Red Deer (Elk), <i>Cervus elaphus</i>	Cervidae
CZECH REPUBLIC 2013 September 4 (Flora and Fauna of the Karlštejn Region)			
3579a-d		Stamps depict various fauna and flora plus a castle	
	Margin	Lesser Horseshoe Bat, <i>Rhinolophus hipposideros</i>	Rhinolophidae
GAMBIA 2013 August 26 (Animals of Thailand)			
3524a	45d	Asiatic Elephant, <i>Elaphus maximus</i>	Elephantidae
3524b	45d	Agile Gibbon, <i>Hylobates agilis</i>	Hylobatidae new
3524c	45d	Water Buffalo, <i>Bubalus bubalis</i>	Bovidae
3525a	55d	Tiger, <i>Panthera tigris</i>	Felidae
3525b	55d	Dhole, <i>Cuon alpinus</i>	Canidae
GERMANY 2014 January 2 (Juvenile Animals)			
2762	60c	Red Fox, <i>Vulpes vulpes</i>	Canidae
2763	60c	Western European Hedgehog, <i>Erinaceus europaeus</i>	Erinaceidae
2764	60c	Red Fox, <i>Vulpes vulpes</i>	Canidae
2765	60c	Western European Hedgehog, <i>Erinaceus europaeus</i>	Erinaceidae
GHANA 2013 August 28 (African Animals)			
2758a	2.25ce	Lion, <i>Panthera leo</i>	Felidae
2758b	2.25ce	Cheetah, <i>Acinonyx jubatus</i>	Felidae
2758c	2.25ce	Impala, <i>Aepyceros melampus</i>	Bovidae
2758d	2.25ce	African Elephant, <i>Loxodonta africana</i>	Elephantidae
2759a	2.25ce	African Elephant, <i>Loxodonta africana</i>	Elephantidae
2759b	2.25ce	Impala, <i>Aepyceros melampus</i>	Bovidae
2759d	2.25ce	White Rhinoceros, <i>Ceratotherium simum</i>	Rhinocerotidae
2759e	2.25ce	Cheetah, <i>Acinonyx jubatus</i>	Felidae

GHANA (continued)

2760a	2.25ce	Chimpanzee, <i>Pan troglodytes</i>	Hominidae
2760b	2.25ce	Giraffe, <i>Giraffa camelopardalis</i>	Giraffidae
2760e	2.25ce	Burchell's Zebra, <i>Equus quagga</i>	Equidae
2760f	2.25ce	Lion, <i>Panthera leo</i>	Felidae
2761	SS 7ce	Meerkat, <i>Suricata suricatta</i>	Herpestidae

GREAT BRITAIN (Guernsey) **2014 February 12** (Orangutan)

1246	£3	Sumatran Orangutan, <i>Pongo abelii</i>	Hominidae
------	----	---	-----------

GREENLAND **2013 September 17** (Greenland Post Office, 75th anniv.)

651	20k	Polar Bear, <i>Ursus maritimus</i>	Ursidae
-----	-----	------------------------------------	---------

GRENADA **2013 October 16** (Cats)

3917a	\$3.25	Puma, <i>Puma concolor</i>	Felidae
3917b	\$3.25	Snow Leopard, <i>Uncia uncia</i>	Felidae
3917c	\$3.25	Jaguar, <i>Panthera onca</i>	Felidae
3917d	\$3.25	Fishing Cat, <i>Prionailurus viverrinus</i>	Felidae

GRENADA GRENADINES **2013 October 16** (Marine Life)

2845	\$9	Humpback Whale, <i>Megaptera novaeangliae</i>	Balaenopteridae
------	-----	---	-----------------

INDIA **2013 May 10** (Wild Asses)

2643	5r	Onager, <i>Equus onager</i>	Equidae
2644	20r	Kiang, <i>Equus kiang</i>	Equidae new

INDONESIA **2013 August 2** (Thailand World Stamp Expo)

2356	10000r	Asiatic Elephant, <i>Elaphus maximus</i>	Elephantidae
------	--------	--	--------------

IRAQ **2013 September 9** (Camels)

1918	250d	Dromedary, <i>Camelus dromedarius</i>	Camelidae
1919	500d	Dromedary, <i>Camelus dromedarius</i>	Camelidae
1920	750d	Dromedary, <i>Camelus dromedarius</i>	Camelidae
1921	1000d	Dromedary, <i>Camelus dromedarius</i>	Camelidae
1922	10000d	Dromedary, <i>Camelus dromedarius</i>	Camelidae
1923	10000d	Dromedary, <i>Camelus dromedarius</i>	Camelidae

ISRAEL **2013 August 26** (Dorcas Gazelle)

1987	7s	Dorcas Gazelle, <i>Gazella dorcas</i>	Bovidae
------	----	---------------------------------------	---------

JAPAN **2013 September 20** (Young Animals)

3595a	50¥	African Elephant, <i>Loxodonta africana</i>	Elephantidae
3595b	50¥	Killer Whale, <i>Orcinus orca</i>	Delphinidae
3595c	50¥	Black-tailed Prairie Dog, <i>Cynomys ludovicianus</i>	Sciuridae
3595e	50¥	Red Kangaroo, <i>Macropus rufus</i>	Macropodidae
3596a	90¥	Tiger, <i>Panthera leo</i>	Felidae
3596b	90¥	Grey Wolf, <i>Canis lupus</i>	Canidae
3596c	90¥	Ring-tailed Lemur, <i>Lemur catta</i>	Lemuridae
3596d	90¥	Polar Bear, <i>Ursus maritimus</i>	Ursidae
3596e	90¥	Arabian Oryx, <i>Oryx leucoryx</i>	Bovidae

MALAYSIA**2013 February 5 (Exotic Pets)**

1447	60c	Four-toed Hedgehog, <i>Atelerix albiventris</i>	Erinaceidae	new
		North African Hedgehog, <i>Atelerix algirus</i>	Erinaceidae	

[Ed. Note: The African Pygmy Hedgehog on the stamp is a hybrid of these two species.]

1449	\$3	Sugar Glider, <i>Petaurus breviceps</i>	Petauridae	
------	-----	---	------------	--

2013 May 13 (Malaysian Forests)

1458		MS of five (Sc#1458a–e) with various fauna and flora		
	Margin	Tiger, <i>Panthera tigris</i>	Felidae	
1459a	\$1	Asiatic Elephant, <i>Elaphus maximus</i>	Elephantidae	
1460a	\$1	Binturong, <i>Arctictis binturong</i>	Viverridae	

2013 December 23 (Endangered Cats)

1482a	60c	Leopard, <i>Panthera pardus</i>	Felidae	
1482b	60c	Leopard, <i>Panthera pardus</i>	Felidae	
1483	80c	Clouded Leopard, <i>Neofelis nebulosa</i>	Felidae	
1484	80c	Bornean Clouded Leopard, <i>Neofelis diardi</i>	Felidae	

MALDIVE ISLANDS**2013 September 30 (Wildlife of the Indian Ocean)**

3024a	20r	South African Fur Seal, <i>Arctocephalus pusillus</i>	Otariidae	
3024b	20r	New Zealand Fur Seal, <i>Arctocephalus forsteri</i>	Otariidae	
3024c	20r	Australian Sea Lion, <i>Neophoca cinerea</i>	Otariidae	
3024d	20r	Subantarctic Fur Seal, <i>Arctocephalus tropicalis</i>	Otariidae	
3025a	20r	Dugong, <i>Dugong dugon</i>	Dugongidae	
3025b	20r	Dugong, <i>Dugong dugon</i>	Dugongidae	
3025c	20r	Dugong, <i>Dugong dugon</i>	Dugongidae	
3025d	20r	Dugong, <i>Dugong dugon</i>	Dugongidae	
3026a	20r	Pygmy Right Whale, <i>Caperea marginata</i>	Neobalaenidae	
3026b	20r	Longman's Beaked Whale, <i>Indopacetus pacificus</i>	Ziphiidae	new
3026c	20r	Bryde's Whale, <i>Balaenoptera edeni</i>	Balaenopteridae	
3026d	20r	Fin Whale, <i>Balaenoptera physalus</i>	Balaenopteridae	
3028a	20r	Bottlenose Dolphin, <i>Tursiops truncatus</i>	Delphinidae	
3028b	20r	Bottlenose Dolphin, <i>Tursiops truncatus</i>	Delphinidae	
3028c	20r	Bottlenose Dolphin, <i>Tursiops truncatus</i>	Delphinidae	
3028d	20r	Indo-Pacific Bottlenose Dolphin, <i>Tursiops aduncus</i>	Delphinidae	
3033	SS 60r	Australian Sea Lion, <i>Neophoca cinerea</i>	Otariidae	
3034	SS 60r	Dugong, <i>Dugong dugon</i>	Dugongidae	
3035	SS 60r	Blue Whale, <i>Balaenoptera musculus</i>	Balaenopteridae	
3037	SS 60r	Bottlenose Dolphin, <i>Tursiops truncatus</i>	Delphinidae	

2013 October 25 (Fauna and Flora)

3042a	20r	Indian Flying Fox, <i>Pteropus giganteus</i>	Pteropodidae	
3042b	20r	Indian Flying Fox, <i>Pteropus giganteus</i>	Pteropodidae	
3042c	20r	Variable Flying Fox, <i>Pteropus hypomelanus</i>	Pteropodidae	new
3042d	20r	Variable Flying Fox, <i>Pteropus hypomelanus</i>	Pteropodidae	new
3052	SS 60r	Indian Flying Fox, <i>Pteropus giganteus</i>	Pteropodidae	

MICRONESIA**2012 May 7 (Dolphins)**

1024a	\$1.20	Long-beaked Common Dolphin, <i>Delphinus capensis</i>	Delphinidae	
1024b	\$1.20	Short-beaked Common Dolphin, <i>Delphinus delphis</i>	Delphinidae	
1024c	\$1.20	Pygmy Killer Whale, <i>Feresa attenuata</i>	Delphinidae	
1024d	\$1.20	Short-finned Pilot Whale, <i>Globicephalus macrorhynchus</i>	Delphinidae	

MICRONESIA (continued)

1025a	\$1.20	Dusky Dolphin, <i>Lagenorhynchus obscurus</i>	Delphinidae
1025b	\$1.20	Hector's Dolphin, <i>Cephalorhynchus hectori</i>	Delphinidae
1025c	\$1.20	Bottlenose Dolphin, <i>Tursiops truncatus</i>	Delphinidae
1025d	\$1.20	Pantropical Spotted Dolphin, <i>Stenella attenuata</i>	Delphinidae
1026	\$3.50	Spinner Dolphin, <i>Stenella longirostris</i>	Delphinidae
1027	\$3.50	Rough-toothed Dolphin, <i>Steno bredanensis</i>	Delphinidae

2013 July 7 (Wildlife of Thailand)

1041b	75c	Dhole, <i>Cuon alpinus</i>	Canidae
1041e	75c	White-handed Gibbon, <i>Hylobates lar</i>	Hylobatidae
1041f	75c	Leopard, <i>Panthera pardus</i>	Felidae
1041g	75c	Malayan Tapir, <i>Tapirus indicus</i>	Tapiridae
1042a	\$1.75	Dugong, <i>Dugong dugon</i>	Dugongidae

MOROCCO**2013 January 9** (Animals in Rabat Zoo)

1147a	3.50d	Mouflon, <i>Ovis orientalis</i>	Bovidae
1147b	3.50d	Scimitar-horned Oryx, <i>Oryx dammah</i>	Bovidae
1147c	8.40d	Lion, <i>Panthera leo</i>	Felidae
1147		Strip of 4 (Sc#1147a–d)	
1147e		SS of 4 (Sc#1147a–d)	

MOZAMBIQUE**2013 May 25** (WWF)

2825a	16m	Ground Pangolin, <i>Manis temmincki</i>	Manidae
2825b	16m	Ground Pangolin, <i>Manis temmincki</i>	Manidae
2825c	92m	Ground Pangolin, <i>Manis temmincki</i>	Manidae
2825d	92m	Ground Pangolin, <i>Manis temmincki</i>	Manidae
2826	SS 175m	Ground Pangolin, <i>Manis temmincki</i>	Manidae

2013 June 25 (Mammals)

2902a	16m	Giant Panda, <i>Ailuropoda melanoleuca</i>	Ursidae
2902b	16m	Giant Panda, <i>Ailuropoda melanoleuca</i>	Ursidae
2902c	92m	Giant Panda, <i>Ailuropoda melanoleuca</i>	Ursidae
2902d	92m	Giant Panda, <i>Ailuropoda melanoleuca</i>	Ursidae
2903a	16m	African Bush Elephant, <i>Loxodonta africana</i>	Elephantidae
2903b	16m	African Bush Elephant, <i>Loxodonta africana</i>	Elephantidae
2903c	92m	African Bush Elephant, <i>Loxodonta africana</i>	Elephantidae
2903d	92m	African Bush Elephant, <i>Loxodonta africana</i>	Elephantidae
2904a	16m	Short-beaked Common Dolphin, <i>Delphinus delphis</i>	Delphinidae
2904b	16m	Long-beaked Common Dolphin, <i>Delphinus capensis</i>	Delphinidae
2904c	92m	Dusky Dolphin, <i>Lagenorhynchus obscurus</i>	Delphinidae
2904d	92m	Rough-toothed Dolphin, <i>Steno bredanensis</i>	Delphinidae
	Margin	UR: Commerson's Dolphin, <i>Cephalorhynchus commersonii</i>	Delphinidae
2932	SS 175m	Giant Panda, <i>Ailuropoda melanoleuca</i>	Ursidae
2933	SS 175m	African Bush Elephant, <i>Loxodonta africana</i>	Elephantidae
2934	SS 175m	L: Atlantic Humpbacked Dolphin, <i>Sousa teuszii</i>	Delphinidae
		R: Rough-toothed Dolphin, <i>Steno bredanensis</i>	Delphinidae

2013 September 25 (Mammals)

2966a	46m	Emperor Tamarin, <i>Saguinus imperator</i>	Callitrichidae
2966b	46m	White-faced Capuchin, <i>Cebus capucinus</i>	Cebidae
2966c	46m	Philippine Tarsier, <i>Tarsius syrichta</i>	Tarsiidae
2966d	46m	Eastern Gorilla, <i>Gorilla beringei</i>	Hominidae

MOZAMBIQUE (continued)

2967a	46m	Leopard, <i>Panthera pardus</i>	Felidae
2967b	46m	African Bush Elephant, <i>Loxodonta africana</i>	Elephantidae
2967c	46m	Hippopotamus, <i>Hippopotamus amphibius</i>	Hippopotamidae
2967d	46m	Giraffe, <i>Giraffa camelopardalis</i>	Giraffidae
2968a	46m	Humpback Whale, <i>Megaptera novaeangliae</i>	Balaenopteridae
2968b	46m	Bowhead, <i>Balaena mysticetus</i>	Balaenidae
2968c	46m	Grey Whale, <i>Eschrichtius robustus</i>	Eschrichtiidae
2968d	46m	Sperm Whale, <i>Physeter catodon</i>	Physeteridae
2996	SS 175m	South American Squirrel Monkey, <i>Saimiri sciureus</i>	Cebidae
2997	SS 175m	Lion, <i>Panthera leo</i>	Felidae
2998	SS 175m	Southern Right Whale, <i>Eubalaena australis</i>	Balaenidae

NAMIBIA**2013 September 30** (Antelopes)

1270	\$5.40	Eland, <i>Taurotragus oryx</i>	Bovidae
1271	NVI(\$6)	Greater Kudu, <i>Tragelaphus strepsiceros</i>	Bovidae
1272	NVI(\$6)	Gemsbok, <i>Oryx gazella</i>	Bovidae
1273	\$6.20	Sable Antelope, <i>Hippotragus niger</i>	Bovidae
1274	\$7.30	Blue Wildebeest, <i>Connochaetes taurinus</i>	Bovidae

NEPAL**2013 December 31** [Rajmansingh Chitrakar (1797–1865) Painter]

894a	10r	Chiru, <i>Pantholops hodgsonii</i>	Bovidae
------	-----	------------------------------------	---------

NETHERLANDS**2014 January 2** (Personalized Stamps)

1430	(54c)	Eurasian Red Squirrel, <i>Sciurus vulgaris</i>	Sciuridae
------	-------	--	-----------

2014 February 25 (Animals in Burgers' Zoo, Arnhem)

1437a	(54c)	Leopard, <i>Panthera pardus</i>	Felidae
1437c	(54c)	Giraffe, <i>Giraffa camelopardalis</i>	Giraffidae
1437e	(54c)	White Rhinoceros, <i>Ceratotherium simum</i>	Rhinocerotidae
1437f	(54c)	Burchell's Zebra, <i>Equus quagga</i>	Equidae
1437g	(54c)	Buff-cheeked Gibbon, <i>Nomascus gabriellae</i>	Hylobatidae
1437j	(54c)	Chimpanzee, <i>Pan troglodytes</i>	Hominidae

NEW CALEDONIA**2013 November 6** (Wildlife and Landscapes)

1164	85fr	Ornate Flying Fox, <i>Pteropus ornatus</i>	Pteropodidae
------	------	--	--------------

NIGER**2013 July 1** (Dolphins and Shells)

1244a	750fr	Dusky Dolphin, <i>Lagenorhynchus obscurus</i>	Delphinidae
1244d	750fr	Bottlenose Dolphin, <i>Tursiops truncatus</i>	Delphinidae
1267	2500fr	Striped Dolphin, <i>Stenella coeruleoalba</i>	Delphinidae

PHILIPPINES**2013 January 25** (Far Eastern University Save the Tamaraw Project)

3460	10p	Tamaraw, <i>Bubalus mindorensis</i>	Bovidae
3461	10p	Tamaraw, <i>Bubalus mindorensis</i>	Bovidae

ROMANIA**2013 July 9** (Sport Hunting and Fishing)

5465	2L	Mouflon, <i>Ovis orientalis</i>	Bovidae
5466	2.1L	European Hare, <i>Lepus europaeus</i>	Leporidae
5467	6L	Alpine Chamois, <i>Rupicapra rupicapra</i>	Bovidae

2013 October 25 (Fauna)

5493	3.3L	Alpine Marmot, <i>Marmota marmota</i>	Sciuridae
5495	4.5L	Eurasian Lynx, <i>Lynx lynx</i>	Felidae
5496	9.1L	European Bison, <i>Bison bonasus</i>	Bovidae

ST KITTS		2014 February 19 (Marine Mammals)		
865a	\$3.50	Pygmy Killer Whale, <i>Feresa attenuata</i>	Delphinidae	
865b	\$3.50	Short-finned Pilot Whale, <i>Globicephala macrorhynchus</i>	Delphinidae	
865c	\$3.50	Dwarf Sperm Whale, <i>Kogia simus</i>	Physeteridae	
865d	\$3.50	Humpback Whale, <i>Megaptera novaeangliae</i>	Balaenopteridae	
866	SS \$9	West Indian Manatee, <i>Trichechus manatus</i>	Trichechidae	
ST VINCENT		2013 August 7 (Mammals)		
3874a	\$3.25	Linnaeus's Two-toed Sloth, <i>Choloepus didactylus</i>	Megalonychidae	
3874b	\$3.25	Nine-banded Armadillo, <i>Dasypus novemcinctus</i>	Dasypodidae	
3874c	\$3.25	Little Big-eared Bat, <i>Micronycteris megalotis</i>	Phyllostomidae	
3874d	\$3.25	Southern Short-tailed Shrew, <i>Blarina carolinensis</i>	Soricidae	new
3875	SS \$9	West Indian Manatee, <i>Trichechus manatus</i>	Trichechidae	
SAMOA		2013 May 29 (Endangered Bats and Birds)		
1142	\$1	Polynesian Sheath-tailed Bat, <i>Emballonura semicaudata</i>	Emballonuridae	new
1150	\$8	Samoan Flying Fox, <i>Pteropus samoensis</i>	Pteropodidae	
SENEGAL		2008 February 27 (Tourism)		
1629	75fr	Patas Monkey, <i>Erythrocebus patas</i>	Cercopithecidae	
UNITED NATIONS (New York)		2013 October 10 (Endangered Species)		
1074	\$1.10	Malayan Tapir, <i>Tapirus indicus</i>	Tapiridae	
1075	\$1.10	Mongoose Lemur, <i>Eulemur mongoz</i>	Lemuridae	
1076	\$1.10	Flat-headed Cat, <i>Prionailurus planiceps</i>	Felidae	
1077	\$1.10	Aye-aye, <i>Daubentonia madagascariensis</i>	Daubentoniidae	
UNITED NATIONS (Geneva)		2013 October 10 (Endangered Species)		
572	1.40fr	Ground Pangolin, <i>Manis temmincki</i>	Manidae	
573	1.40fr	Potto, <i>Perodicticus potto</i>	Lorisidae	
574	1.40fr	Philippine Tarsier, <i>Tarsius syrichta</i>	Tarsiidae	
575	1.40fr	Comoro Black Flying Fox, <i>Pteropus livingstonei</i>	Pteropodidae	new
UNITED NATIONS (Vienna)		2013 October 10 (Endangered Species)		
534	70c	Banded Palm Civet, <i>Hemigalus derbyanus</i>	Viverridae	
536	70c	Slow Loris, <i>Nycticebus coucang</i>	Lorisidae	
537	70c	Western Long-beaked Echidna, <i>Zaglossus bruijini</i>	Tachyglossidae	
WALLIS AND FUTUNA ISLANDS		2013 February 20 (Bats)		
721	55fr	Pacific Flying Fox, <i>Pteropus tonganus</i>	Pteropodidae	



ORNITHOLOGY

Editor

Glenn G. Mertz, BU1455

Updates/Corrections



CHINA (Taiwan) – Vol. 62(1), p.20

Update: When I listed this issue, I only listed one stamp with a bird when, in fact, there were three. The other two are; 3993f, \$3.50, Red-crowned Crane, *Grus japonensis*, Gruidae (denomination color in red); 3994f, \$5.00, same bird (denomination color in blue-gray); 3993g, \$3.50, Mandarin Duck, *Aix galericulata*, Anatidae (denomination color in blue-gray); 3994g, \$5.00, same bird (denomination color in orange-red).

TANZANIA– Vol. 62(3), p.192

Update: Scott Publishing has assigned numbers to the set listed on page 192, issued 7/10/12. Sc#2668a–h for the set of eight; Sc#2667a–d, for first set of four; Sc#2666a–d for second set of four; Sc#2670 for first SS, and 2669 for second SS listed.

New Issues

Scott#	Denom	Common Name/Scientific Name	Family/Subfamily	Code
--------	-------	-----------------------------	------------------	------

BOLIVIA

2013 July 9

A*

A set of four stamps (Sc#1557–60) for Endangered Animals, with one stamp featuring a bird. Designer's name on photocopy is unreadable. Offset by Industrias Lara Bisch.

1560	10.50b	Andean Condor, <i>Vultur gryphus</i>	Cathartidae	
------	--------	--------------------------------------	-------------	--

CANADA

2014 March 31

A*

Another set of five stamps in Canada's Juvenile animals series, issued in a SS of five (Sc#2709a–e) with two stamps featuring birds. Designers: Monique Dufour and Sophie Lafortune. Lithography by Lowe-Martin.

2709b	\$1.00	Burrowing Owl, <i>Athene cunicularis</i>	Strigidae	
2710	\$1.00	Same bird, s/a coil		
2709d	\$1.80	Atlantic Puffin, <i>Fratercula arctica</i>	Alcidae	
2713	\$1.80	Same bird, s/a coil		
2716	\$1.80	Same bird, bklt format		

CHINA (Taiwan)

2013 June 26

A*

A set of four stamps of owls. Engravers: Qian Zhao De, Huang Lian Cai, Chou Mei Ling, and Chen Yueg Guey. Intaglio by Central Engraving Printing Plant.

4122	\$5	Collared Scops-Owl, <i>Otus lettia</i>	Strigidae	
4123	\$5	Australian Grass-Owl, <i>Tyto longimembris</i>	Tytonidae	
4124	\$10	Tawny Fish-Owl, <i>Ketupa flavipes</i>	Strigidae	Vol.62(3)
4125	\$25	Ryukyu Scops-Owl, <i>Otus elegans</i> (Cap: <i>Otus elegans botelensis</i> , which is a ssp. of Ryukyu Scops-Owl)	Strigidae	

CYPRUS (Turkish Zone)

2013 July 8

A*

Three stamps (Sc#745–47) for flora and fauna, with one stamp featuring one bird.

746	50k	Eurasian Hoopoe, <i>Upupa epops</i>	Upupidae	
-----	-----	-------------------------------------	----------	--

ITALY**2013 December 4****A***

A strip of five stamps for "Birds of the Alps." Designer: A.M. Maresca.

3219	70c	Rock Ptarmigan, <i>Lagopus muta</i>	Columbidae
3219b	70c	Gray-faced Woodpecker, <i>Picus canus</i>	Picidae
3219c	70c	Lammergeier, <i>Gypaetus barbatus</i>	Accipitridae
3219d	70c	Boreal Owl, <i>Aegolius funereus</i>	Strigidae
3219e	70c	Eurasian Capercaillie, <i>Tetrao urogallus</i>	Phasianidae

KOREA (North)**2009 December 31****C***

A set of nine stamps (Sc#4888a-i) for "End of Juche 98," but only two stamps feature birds.

4888g	57w	Common Ostrich, <i>Struthio camelus</i>	Struthionidae
4888h	70w	Red-crowned Crane, <i>Grus japonensis</i>	Gruidae

(Note: You need a magnifying glass to spot this bird back below the blue sky)

MOROCCO**2012 January 9****A***

A set of four se-tenant stamps (Sc#1147a-d) for the Rabat Zoo, but only one stamp features birds. Designer: M. Waquaf. Offset, no printer information.

1147d	8.40d	Waldrapp, <i>Geronticus eremita</i>	Threskiornithidae
1147e		SS of four (Sc#1147a-d)	

MOZAMBIQUE**2013 June 25****A***

A sheet of four non se-tenant stamps and a SS of birds and lighthouses.

2901a	16m	LL: Black-legged Kittiwake, <i>Rissa tridactyla</i> UL: Trumpeter Swan, <i>Cygnus buccinator</i>	Laridae Anatidae
2901b	16m	Common Loon, <i>Gavia immer</i>	Gaviidae
2901c	92m	Mallard, <i>Anas platyrhynchos</i>	Anatidae
2901d	92m	Long-billed Curlew, <i>Numenius americanus</i>	Scolopacidae
2931	SS 175m	Herring Gull, <i>Larus argentatus</i>	Laridae
	Margin	UL: Brolga, <i>Grus rubicunda</i> LL: African Spoonbill, <i>Platalea alba</i> LR: Canvasback, <i>Aythya valisineria</i>	Gruidae Threskiornithidae Anatidae

A sheet of four non se-tenant stamps and a SS of parrots.

2905a	16m	L: Papuan Lorikeet, <i>Charmosyna papou</i> R: Eastern Rosella, <i>Platycercus eximius</i>	Psittacidae Psittacidae
2905b	16m	L: Superb Parrot, <i>Polytelis swainsonii</i> R: Blue-and-yellow Macaw, <i>Ara ararauna</i>	Psittacidae Psittacidae
2905c	92m	L: Salmon-crested Cockatoo, <i>Cacatua moluccensis</i> R: Eclectus Parrot, <i>Eclectus roratus</i>	Psittacidae Psittacidae
2905d	92m	L: Red-and-Green Macaw, <i>Ara chloropterus</i> R: Hyacinth Macaw, <i>Anodorhynchus hyacinthinus</i>	Psittacidae Psittacidae
2935	SS 175m	L: Red-fan Parrot, <i>Deroptryus accipitrinus</i> R: Alexandrine Parakeet, <i>Psittacula eupatria</i>	Psittacidae Psittacidae

A sheet of four non se-tenant stamps and a SS of raptors.

2906a	16m	Cinereous Vulture, <i>Aegypius monachus</i>	Accipitridae
2906b	16m	Common Buzzard, <i>Buteo buteo</i>	Accipitridae
2906c	92m	Red-tailed Hawk, <i>Buteo jamaicensis</i>	Accipitridae
2906d	92m	Osprey, <i>Pandion haliaetus</i>	Pandionidae
2936	SS 175m	King Vulture, <i>Sarcoramphus papa</i>	Cathartidae

A sheet of four stamps, non-se-tenant, and a SS of owls and mushrooms.

2907a	16m	Northern Hawk-Owl, <i>Surnia ulula</i>	Strigidae
2907b	16m	Great Horned Owl, <i>Bubo virginianus</i>	Strigidae
2907c	92m	Barn Owl, <i>Tyto alba</i>	Tytonidae
2907d	92m	Great Gray Owl, <i>Strix nebulosa</i> (Cap: <i>Ulula cinerea lapponic</i>)	Strigidae
2937	SS 175m	Barn Owl, <i>Tyto alba</i>	Tytonidae
	Margin	LL: Tawny Owl, <i>Strix aluco</i>	Strigidae
		LR: Eurasian Eagle-Owl, <i>Bubo bubo</i>	Strigidae
		UL: Burrowing Owl, <i>Athene cunicularia</i>	Strigidae

2013 September 25

A*

A sheet of four se-tenant stamps and a SS showing owls.

2969a	46m	Brown Wood-Owl, <i>Strix leptogrammica</i>	Strigidae	
2969b	46m	White-fronted Scops-Owl, <i>Otus sagittatus</i>	Strigidae	Vol.63(2)
2969c	46m	Hume's Owl, <i>Strix butleri</i>	Strigidae	
2969d	46m	Madagascar Red Owl, <i>Tyto soumagnei</i>	Tytonidae	
2999	SS 175m	Great Gray Owl, <i>Strix nebulosa</i>	Strigidae	

NEPAL

2012 December 31

B*

A set of ten single stamps for Famous People (Sc#885–94) but only one of the stamps of Sc#894a–b, features birds. Designer: Mohan Narsingh Rana. Offset. The stamp is for Rajman Singh Chitrakar, an eminent artist.

894b	10r	L: Lammergeier, <i>Gypaetus barbatus</i>	Accipitridae
		R: Eurasian Eagle-Owl, <i>Bubo bubo</i>	Strigidae

NETHERLANDS

2013 February 25

A*

A pane of ten se-tenant, non-denominated stamps (Sc#1437a–j) for the 100th Anniversary of Burgers Zoo, with two stamps featuring birds. Designer: Harald Slaterus. Offset by Enschede in a tete-beche format on the pane.

1437d	(54c)	Hyacinth Macaw, <i>Anodorhynchus hyacinthinus</i>	Psittacidae
1437i	(54c)	Jackass Penguin, <i>Spheniscus demersus</i>	Spheniscidae

NEW CALEDONIA

2014 January 20

B*

A pane of four se-tenant stamps (Sc#1171a–d) for New Banknotes, with one stamp featuring two species of birds.

1171b	75fr	Horned Parakeet, <i>Eunymphicus cornutus</i>	Psittacidae
		Kagu, <i>Rhynochetos jubatus</i>	Rhynochetidae

NIGER

2013 July 1

A*

A sheet of four se-tenant stamps and a SS of owls and mushrooms. The two owl species are prominent on the left-hand side of the stamps and the same two less prominent on the right-hand stamps.

1245a–b	750fr	Barn Owl, <i>Tyto alba</i> (Top two stamps)	Tytonidae
1245c–d	750fr	Great Horned Owl, <i>Bubo virginianus</i> (Bottom two stamps)	Strigidae

PARAGUAY

2011 November 21

A*

A single stamp and a label for 75th Anniversary for Caritas/Radio. Offset.

2917	700g	Savanna Hawk, <i>Buteo gallus meridionalis</i>	Accipitridae
------	------	--	--------------

2012 July 14

A*

A set of two stamps (Sc#2940–41) and two labels for the 125th Anniversary of the P.L.R.F (Authentic Radical Liberal Party), with one stamp featuring a bird. Offset.

2940	2000g	Hyacinth Macaw, <i>Anodorhynchus hyacinthinus</i>	Psittacidae
------	-------	---	-------------

2012 November 20**A***

A single stamp and a label for Completion of New Dam near Encarnación.

2954 1400g Great Egret, *Ardea alba* Ardeidae

2012 December 18**A***

A single stamp and a SS for the 40th Anniversary of the United Nations Program for the Environment. Offset.

2956 3000g Striated Heron, *Butorides striata* Ardeidae

2957 SS 16000g Roseate Spoonbill, *Platalea ajaja* Threskiornithidae

ROMANIA**2013 June 28****A***

A set of four stamps of Nocturnal Birds of Prey. Designer: Mihai Vamasescu. Offset. Each stamp also issued as a miniature sheet of six.

5460 21 Little Owl, *Athene noctua* Strigidae

5460a MS of six

5461 3.30l Long-eared Owl, *Asio otus* Strigidae

5461a MS of six

5462 4.50l Ural Owl, *Strix uralensis* Strigidae

5462a MS of six

5463 9.10l Great Gray Owl, *Strix nebulosa* Strigidae

5463a MS of six

ST. KITTS**2014 February 19****A***

A sheet of six se-tenant stamps of "Hummingbirds of the Caribbean."

862a \$2.50 Rufous-crested Coquette, *Lophornis delattrei* Trochilidae
(Cap: *L. regulus*, which is not listed in Clements Checklist of Birds of the World)

862b \$2.50 Same bird

862c \$2.50 Purple-collared Woodstar, *Myrtis fanny* Trochilidae

862d \$2.50 Tufted Coquette, *Lophornis ornatus* Trochilidae

862e \$2.50 Black-crested Coquette, *Lophornis helenae* Trochilidae Vol.63(1)

862f \$2.50 Broad-tailed Hummingbird, *Selasphorus platycercus* Trochilidae

ST. MARTIN**2013 February 6****A***

A sheet of 12 se-tenant stamps and three labels of birds in the middle of the sheet. Designer: Studio Labranda. Offset by Austrian Government Printing Office.

37a 25c Plumbeous Pigeon, *Patagioenas plumbea* (Cap: *Columba p.*) Columbidae Vol.62(4)

37b 50c Blue-tailed Emerald, *Chlorostilbon mellisugus* Trochilidae

37c 75c Purplish Jay, *Cyanocorax cyanomelas* Corvidae Vol.62(4)

37d 100c Gray-headed Tanager, *Eucometis penicillata* Thraupidae Vol.62(4)

37e 150c Ochre-bellied Flycatcher, *Mionectes oleagineus* Tyrannidae Vol.62(4)

37f 200c Yellow-backed Tanager, *Hemithraupis flavicollis* Thraupidae

37g 225c Rufous-bellied Antwren, *Isleria guttata* (Cap: *Myrmotherula*) Thamnophilidae Vol.62(4)

37h 250c Squirrel Cuckoo, *Piaya cayana* Cuculidae

37i 300c Black-bellied Cuckoo, *Piaya melanogaster* Cuculidae Vol.62(4)

37j 350c Little Cuckoo, *Piaya minuta* Cuculidae

37k 400c Spot-winged Antshrike, *Pygiptila stelleris* Thamnophilidae Vol.62(4)

37l 475c Cocoa Thrush, *Turdus fumigratus* Turdidae Vol.62(4)

3 labels Spot-winged Antshrike, *Pygiptila stelleris* Thamnophilidae

Rufous-bellied Antwren, *Isleria guttata* Thamnophilidae

Squirrel Cuckoo, *Piaya cayana* Cuculidae

ST. PIERRE & MIQUELON **2014 January 16** **A***

A single stamp by designer P. Bolz. Offset by Philaposte.

992 47c Bohemian Waxwing, *Bombycilla garrulus* Bombycillidae**ST. VINCENT (Mustique)** **2013 November 11** **A***

A sheet of four se-tenant stamps of “Hummingbirds of the Amazon Rainforest” for Brasiliana 2013. Offset.

3885a \$3.25 White-necked Jacobin, *Florisuga mellivora* Trochilidae3885b \$3.25 Black-throated Mango, *Anthracothorax nigricollis* Trochilidae3885c \$3.25 Gray-breasted Sabrewing, *Campylopterus largipennis* Trochilidae3885d \$3.25 Fork-tailed Woodnymph, *Thalurania furcata* Trochilidae**SAMOA** **2013 May 29** **A***

A set of 12 stamps (Sc#1142–53) of “Threatened Birds and Bats,” but ten of them are of birds. Designer: Mariya Karchevskaya. Offset.

1143 \$2.70 Eurasian Moorhen, *Gallinula chloropus* (Cap: *G. pacifica*) Rallidae1144 \$3.00 Tooth-billed Pigeon, *Didunculus strigirostris* Columbidae1145 \$3.90 Polynesian Triller, *Lalage maculosa* Campephagidae1146 \$4.00 Samoan White-eye, *Zosterops samoensis* Zosteropidae1147 \$5.00 Polynesian Storm-Petrel, *Nesofregetta fuliginosa* Hydrobatidae1148 \$6.00 Bristle-thighed Curlew, *Numenius tahitiensis* Scolopacidae1149 \$7.50 Collared Petrel, *Pterodroma brevipes* Procellariidae Vol.62(3)

(Previously a subspecies under Gould’s Petrel elevated to full species status)

1150 \$10.00 Samoan Flycatcher, *Myiagra albiventris* Monarchidae1152 \$12.50 Friendly Ground-Dove, *Gallicolumba stairi* Columbidae1153 \$15.00 Mao, *Gymnomyza samoensis* Meliphagidae Vol.62(3)**SIERRA LEONE** **2013 December 23** **A***

A sheet of four se-tenant stamps and a SS for “Birds of Africa.”

3201a 5000le Crested Barbet, *Trachyphonus vaillantii* Capitonidae3201b 5000le White-fronted Bee-eater, *Merops bullockoides* Meropidae3201c 5000le Burchell’s Glossy-Starling, *Lamprotornis australis* Sturnidae Vol.63(2)3201d 5000le Crimson-breasted Gonolek, *Laniarius atrococcineus* Malaconotidae

(Cap: Crimson-breasted Shrike)

3202 SS 16000le Lilac-breasted Roller, *Coracias caudatus* Coraciidae**SINGAPORE** **2013 July 13** **B***

A set of four stamps (Sc#1608–11) to celebrate 50 years of greening Singapore, with three of the four stamps featuring birds. Designer: Nicodemus Loh. Offset by Cartor.

1608 (26c) Collared Kingfisher, *Todiramphus chloris* (Denom: 1st Local) Alcedinidae

1613a (26c) Same bird, s/a format

1609 50c Oriental Pied-Hornbill, *Anthracoceros albirostris* BucerotidaeEastern Crimson Sunbird, *Aethopyga siparaja* Nectariniidae

1613b 50c Same birds, s/a format

1610 80c Oriental Magpie-Robin, *Copsychus saularis* Muscicapidae

1613c 80c Same bird, s/a format

2013 September 12**A***

A set of two stamps for 40th Anniversary of Diplomatic Relations with Vietnam. Designers: To Ming Trang and Eng Siak Loy. Offset by Secura Singapore.

1626	(26c)	Gray Peacock-Pheasant, <i>Polyplectron bicalcaratum</i> (1st Local)	Phasianidae
1627	\$2.00	Red Junglefowl, <i>Gallus gallus</i>	Phasianidae

2013 October 16**B***

A set of ten stamps (Sc#1628–37) for “Vanishing Trades,” with one stamp featuring a bird. Designer: Lim An Ling. Offset by Southern Colour Print.

1637	80c	Rose-ringed Parakeet, <i>Psittacula krameri</i>	Psittacidae
------	-----	---	-------------

SLOVENIA**2014 May 30****A***

A set of five self-adhesive stamps, four with a letter on the stamp and one with a Euro value.

1043	(29c)	Eurasian Crag-Martin, <i>Ptyonoprogne rupestris</i> (Denom: “A”)	Hirundinidae	Vol.63(2)
1044	(33c)	Common Merganser, <i>Mergus merganser</i> (Denom: “B”)	Anatidae	
1045	36c	Great Bittern, <i>Botaurus stellaris</i>	Ardeidae	
1046	(60c)	Lesser Kestrel, <i>Falco naumanni</i> (Denom: “C”)	Falconidae	
1047	(64c)	Ural Owl, <i>Strix uralensis</i> (Denom: “D”)	Strigidae	

SOLOMON ISLANDS**2012 June 5****A***

Four large-width sheets of five stamps, with four of the stamps having two spaced apart and two in a se-tenant format on the left side of the large sheet, with a sheet separated from the left side by perforations, showing the fifth stamp, which I am going to list as a SS.

Lighthouses of Oceania

1151a	\$9	Black-fronted Tern, <i>Chlidonias albostratus</i>	Laridae
1151b	\$9	Red-billed Gull, <i>Chroicocephalus scopulinus</i>	Laridae
1151c	\$9	Silver Gull, <i>Chroicocephalus novaehollandiae</i>	Laridae
1151d	\$9	Bridled Tern, <i>Onychoprion anaethetus</i>	Laridae
	Margin	UR: Sooty Tern, <i>Onychoprion fuscatus</i>	Laridae
1151e	SS \$27	Gull-billed Tern, <i>Gelochelidon nilotica</i>	Laridae
	Margin	UL: Caspian Tern, <i>Hydroprogne caspia</i>	Laridae

Birds of Solomon Islands

1159a	\$9	Willie-wagtail, <i>Rhipidura leucophrys</i>	Rhipiduridae
1159b	\$9	Cardinal Myzomela, <i>Myzomela cardinalis</i>	Meliphagidae
1159c	\$9	Olive-backed Sunbird, <i>Cinnyris jugularis</i>	Nectariniidae
1159d	\$9	Rufous Fantail, <i>Rhipidura rufifrons</i>	Rhipiduridae
	Margin	UL: White-bellied Cuckooshrike, <i>Coracina papuensis</i>	Campehagidae
1159e	SS \$27	Oriole Whistler, <i>Pachycephala orioloides</i> (Subspecies elevated to full species status)	Pachycephalidae
	Margin	UL: White-bellied Cuckooshrike, <i>Coracina papuensis</i> UR: Long-tailed Myna, <i>Mino kreffti</i>	Campehagidae Sturnidae

Birds of Prey

1160a	\$9	Pacific Baza, <i>Aviceda subcristata</i>	Accipitridae
1160b	\$9	Brahminy Kite, <i>Haliastur indus</i>	Accipitridae
1160c	\$9	Whistling Kite, <i>Haliastur sphenurus</i>	Accipitridae
1160d	\$9	White-bellied Sea-Eagle, <i>Haliaeetus leucogaster</i>	Accipitridae
	Margin	Top: Brahminy Kite, <i>Haliastur indus</i>	Accipitridae
1161e	SS \$27	Swamp Harrier, <i>Circus approximans</i>	Accipitridae
	Margin	Top: Gray Goshawk, <i>Accipiter novaehollandiae</i>	Accipitridae

new

Owls

1161a	\$9	Barn Owl, <i>Tyto alba</i>	Tytonidae
1161b	\$9	Barn Owl, <i>Tyto alba</i>	Tytonidae
1161c	\$9	Solomon's Hawk-Owl, <i>Ninox jacquinoti</i>	Strigidae
1161d	\$9	Fearful Owl, <i>Nesasio solomonensis</i>	Strigidae
1161e	SS \$27	Barn Owl, <i>Tyto alba</i>	Tytonidae

SOUTH AFRICA**2014 July 18****C***

A sheet of ten non-denominated, self-adhesive stamps (Sc#1496a–j) for the 100th Anniversary of the Kirstenbosch National Botanical Gardens in Capetown, with one stamp featuring a bird as part of that stamp design. The stamps are all inscribed “Standard Postage.”

1496j	(2.80r)	Cape Sugarbird, <i>Promerops cafer</i>	Promeropidae
-------	---------	--	--------------

SRI LANKA**2013 July 28****A***

A set of four stamps (Sc#1896–99) of “Wildlife in Yala National Park,” with one stamp featuring a bird. A SS of two, with a bird stamp as one of the two, again with the Thailand 2013 World Stamp Exhibition emblem.

1899	30re	Black-necked Stork, <i>Ephippiorhynchus asiaticus</i>	Ciconiidae
1899a		SS of 2 (Sc#1898–99)	
1899b		SS of 2 (Sc#1898–99) with emblem	

SURINAME**2014 February 19****A***

A block of 12 stamps and four labels. The four labels are the heads only of Sc#1461a, d, f, and g.

1461a	(55c)	Buff-cheeked Greenlet, <i>Hylophilus muscicapinus</i> (Denom: “B”)	Vireonidae	Vol.63(2)
1461b	\$1.45	Plumbeous Euphonia, <i>Euphonia plumbea</i>	Fringillidae	
1461c	\$2	Ruddy Ground-Dove, <i>Columbina talpacoti</i>	Columbidae	
1461d	\$2.50	Double-banded Pygmy-Tyrant, <i>Lophotriccus vitiensis</i>	Tyrannidae	Vol.63(2)
1461e	\$3.50	Pygmy Antwren, <i>Myrmotherula brachyuran</i>	Thamnophilidae	Vol.63(2)
1461f	\$4.50	Yellow Oriole, <i>Icterus nigrogularis</i>	Icteridae	
1461g	\$5.50	Blue-black Grosbeak, <i>Cyanocompsa cyanoides</i> (Cap: <i>Passerina</i>)	Cardinalidae	Vol.63(2)
1461h	\$6	Golden-headed Manakin, <i>Pipra erythrocephala</i>	Pipridae	Vol.63(2)
1461i	\$7	White-plumed Antbird, <i>Pithys albifrons</i>	Thamnophilidae	
1461j	\$8	Plain Xenops, <i>Xenops minutus</i>	Furnariidae	Vol.63(2)
1461k	\$9	Ash-winged Antwren, <i>Terenura spodioptila</i>	Thamnophilidae	Vol.63(2)
1461l	\$10	Tawny-throated Leaf-tosser, <i>Sclerurus mexicanus</i>	Furnariidae	

SWITZERLAND**2014 March 6****C***

A strip of three stamps (Sc#1514a–c) of a scenic view of Swiss National Park, with one stamp featuring a bird. Designer: Andreas Panzer.

1514b	100c	Golden Eagle, <i>Aquila chrysaetos</i>	Accipitridae
-------	------	--	--------------

TAJIKISTAN**2013 November 9****A***

A set of four se-tenant stamps of “Birds of the Country,” but two of the birds of prey are not identifiable.

412a	2s	Chukar Partridge, <i>Alectoris chukar</i>	Phasianidae
412b	2s	U/I eagle	Accipitridae
412c	2s	U/I eagle	Accipitridae
412d	2s	Eurasian Scops-Owl, <i>Otus scops</i>	Strigidae

THAILAND**2013 July 29****A***

A set of four stamps of Nocturnal Birds. Designer: Mayuree Narknisorn. Offset by Thai British Security Printing. A SS also contains the four stamps in se-tenant format.

2745	5b	Barred Eagle-Owl, <i>Bubo sumatranus</i>	Strigidae	Vol.62(3)
2746	5b	Barn Owl, <i>Tyto alba</i>	Tytonidae	
2747	5b	Collared Scops-Owl, <i>Otus lettia</i>	Strigidae	
2748	5b	Collared Owlet, <i>Glaucidium brodiei</i>	Strigidae	
2748a		SS of 4 (Sc#2745–48) that sold for 35b		

UKRAINE**2012 September 1****C***

A se-tenant pair of stamps (Sc#893a–b) featuring the fairy tale *Zaliznonosa Bosorkania*, with one stamp with birds. Designer: Vladyslav Yerko. Offset by Ukraina.

893b	2.50h	Rook, <i>Corvus frugilegus</i>	Corvidae	
------	-------	--------------------------------	----------	--

2012 December 8**B***

A se-tenant pair of stamps (Sc#904a–b) for Christmas and New Year, with one stamp a bird in a sled. Designer: Eleva Levski. Offset a foil by Ukraina.

925a	2k	Great Tit, <i>Parus major</i>	Paridae	
------	----	-------------------------------	---------	--

2013 October 14**B***

A miniature sheet of four stamps (Sc#941a–d) for Autumn, with one stamp featuring a bird.

941a	2h	Bohemian Waxwing, <i>Bombycilla garrulus</i>	Bombycillidae	
------	----	--	---------------	--

UNITED STATES**2014 April 5****A***

A double-sided booklet pane of 20 self-adhesive “Forever” stamps, with ten different birds shown twice. The stamp values on the date of issue were 49c.

4882	(49c)	Western Meadowlark, <i>Sturnella neglecta</i>	Icteridae	
4883	(49c)	Mountain Bluebird, <i>Sialia currucoides</i>	Turdidae	
4884	(49c)	Western Tanager, <i>Piranga ludoviciana</i>	Cardinalidae	
4885	(49c)	Painted Bunting, <i>Passerina ciris</i>	Cardinalidae	
4886	(49c)	Baltimore Oriole, <i>Icterus galbula</i>	Icteridae	
4887	(49c)	Evening Grosbeak, <i>Coccothraustes vespertinus</i>	Fringillidae	Vol.63(2)
4888	(49c)	Scarlet Tanager, <i>Piranga olivacea</i>	Cardinalidae	
4889	(49c)	Rose-breasted Grosbeak, <i>Pheucticus ludovicianus</i>	Cardinalidae	
4890	(49c)	American Goldfinch, <i>Spinus tristis</i>	Fringillidae	
4891	(49c)	White-throated Sparrow, <i>Zonotrichia albicollis</i>	Emberizidae	
4891a		Bklt of 10 (Sc#4882–91)		
4891b		Bklt of 20 (2ea Sc#4882–91)		

URUGUAY**2013 December 4****A***

Two horizontal stamps (Sc#2451a–b) for tourism showing wildlife, with one stamp having a Bird. Designer: Daniel Pereyra. Offset by Sanfer.

2451a	15p	Red Knot, <i>Calidris canutus</i>	Scolopacidae	
-------	-----	-----------------------------------	--------------	--

NEW BIRDS IN THE PHILATELIC AVIARY

Charles E. Braun, BU1364

Corrections

The bird identified as a Variable Goshawk on the Solomon Islands 2012 \$27 stamp [Vol. 62(1), p.41] is indeed a Gray Goshawk, *Accipiter novaehollandiae* as indicated on the stamp. This species, split from the Variable Goshawk, occurs in northern and eastern Australia and Tasmania, not in the Solomon Islands or New Guinea (indicated in the species name).

The bird identified [Vol. 62(3)] as a Samoan Triller, *Lalage sharpei* (following the identification on the stamp) is a Polynesian Triller, Samoan subspecies, *Lalage maculosa maculosa*, which occurs on the islands of Upolu and Savai'i in Western Samoa.

Slender-billed Curlew has appeared on Morocco, 1994, Sc#786, 1.70d.

Evening Grosbeak has appeared on three issues, first on Nevis, 1985, Sc#420, 60c.

New Birds



BLUE-FACED RAIL, *Gymnocrex rosenbergii* Rallidae
Indonesia, 15 July 2014, not yet cataloged, 5000r

Length: 12 inches, sexes alike, resident. Reddish-brown above and black below with cobalt blue bare skin around the eyes.

Habitat: Forest and abandoned rice fields.

Range: Northern and north-central Sulawesi and Peleng, Indonesia.

Reference: del Hoyo, J., A. Elliott, and J. Sargatal, Eds. Handbook of the Birds of the World, Volume 3.



JAVAN PLOVER, *Charadrius javanicus* Charadriidae
Indonesia, 15 July 2014, not yet cataloged, 5000r

Length: 6 inches, resident. The male (shown on the stamp) is brown above and white below with a rufous-cinnamon neck patch and a black eyestripe and shoulder streak (brown in the female).

Habitat: Coastal lowlands.

Range: Java and neighboring islands.

Reference: del Hoyo, J., A. Elliott, and J. Sargatal, Eds. Handbook of the Birds of the World, Volume 3.



VINACEOUS DOVE, *Streptopelia vinacea* Columbidae
Togo, 15 November 2013, not yet cataloged, 2500fr, R margin

Length: 10 inches, sexes alike, resident. Grayish above and pinkish crown and below with a black hindcollar.

Habitat: Dry woodland.

Range: Senegal to Eritrea and Uganda.

Reference: del Hoyo, J., A. Elliott and J. Sargatal, Eds. Handbook of the Birds of the World, Volume 4.



DARK-BILLED CUCKOO, *Coccyzus melacoryphus* Cuculidae

St. Martin, 18 June 2014 not yet cataloged, 50c

Length: 11 inches, sexes alike, resident. Grayish-brown above and buff below with a black mask and bill, gray crown and nape and white-spotted black undertail.

Habitat: Forest, plantations, thickets and mangroves.

Range: Colombia to central Argentina.

Reference: del Hoyo, J., A. Elliott, and J. Sargatal, Eds. Handbook of the Birds of the World, Volume 4.



WHITE-BELLIED MOUNTAINGEM, *Lampornis hemileucus* Trochilidae

Montserrat, 22 April 2014, not yet cataloged, \$3

Length: 4 inches, resident. The male (shown on the stamp) is green above and white below with dark wings and tail, blue-violet throat and white postocular streaks; the female has a green-spotted throat.

Habitat: Cool wet subtropical forest.

Range: Southern Nicaragua to western Panama.

Reference: del Hoyo, J., A. Elliott, and J. Sargatal, Eds. Handbook of the Birds of the World, Volume 5.



COMMON SCIMITARBILL,

Rhinopomastus cyanomelas Phoeniculidae

Burundi, 19 May 2014, not yet cataloged, 3690r, R margin

Length: 10 to 12 inches, sexes similar but the female is duller, resident. All iridescent blue-black with a dark curved bill. Some have white spots in the wings and tail.

Habitat: Dry thornbush and wooded savanna.

Range: Western Uganda to Namibia and Transvaal.

Reference: del Hoyo, J., A. Elliott, and J. Sargatal, Eds. Handbook of the Birds of the World, Volume 6.



GOLDEN-COLLARED WOODPECKER, *Veniliornis cassini* Picidae

St. Martin, 18 June 2014, not yet cataloged, 650c

Length: 6 inches, resident. The male (shown on the stamp) is yellowish-green above and heavily barred dark brown and white below with a red crown and golden-yellow hindcollar; the female has a green-tinged brown crown.

Habitat: Rainforest and shrubbery.

Range: Eastern Venezuela, the Guianas, and adjacent Brazil.

Reference: del Hoyo, J., A. Elliott, and J. Sargatal, Eds. Handbook of the Birds of the World, Volume 7.

**GRAY KESTREL, *Falco ardosiaceus* Falconidae**

Burundi, 19 May 2014, not yet cataloged, 3090fr

Length: 12 to 13 inches, sexes alike, resident. All dark gray.

Habitat: Dense woodland and savanna.

Range: Senegal to Eritrea and northern Namibia.

Reference: del Hoyo, J., A. Elliott, and J. Sargatal, Eds. Handbook of the Birds of the World, Volume 2.

The Banded Pitta has been split into three species, all of which are on stamps.

**MALAYAN BANDED PITTA, *Pitta irena* Pittidae**

Malaysia, 14 May 2005, Sc#1030, \$2

Length: 8 to 9 inches, resident. The male (shown) is chestnut-brown above and blue below with a black head, deep yellow supercilium, blue tail, and white collar. The female is finely streaked below.

Habitat: Primary forest, often near limestone cliffs.

Range: Malay Peninsula and Sumatra.

Reference: del Hoyo, J., A. Elliott, and J. Sargatal, Eds. Handbook of the Birds of the World, Volume 8.

**BORNEAN BANDED PITTA, *Pitta schwaneri* Pittidae**

Malaysia, 9 September 1965, Sc#27, \$10

Length: 8 to 9 inches, sexes similar, resident. Chestnut-brown above finely streaked black and yellow below with a yellow supercilium, blue tail and white throat.

Habitat: Primary forest, often near limestone cliffs.

Range: Borneo.

Reference: del Hoyo, J., A. Elliott, and J. Sargatal, Eds. Handbook of the Birds of the World, Volume 8.

**JAVA BANDED PITTA, *Pitta guajana* Pittidae**

Micronesia, 7 July 2013, not yet cataloged, 75c

Length: 8 to 9 inches, resident. The male (shown on the stamp) is brown above and finely streaked black and yellow below with an orange crown, black mask, white throat and blue tail; the female has a black crown and mask and a yellow and white supercilium.

Habitat: Primary forest, often near limestone cliffs.

Range: Java and Bali.

Reference: del Hoyo, J., A. Elliott, and J. Sargatal, Eds. Handbook of the Birds of the World, Volume 4.



BLACK-TAILED ORIOLE, *Oreolus percivali* Oriolidae

Burundi, 19 May 2014, not yet cataloged, 3690r, LR margin

Length: 8 inches. Sexes alike, resident. Yellow with black head, neck, wings, and tail.

Habitat: Montane woodlands.

Range: Northwestern Burundi to eastern Congo and western Tanzania.

Reference: del Hoyo, J., A. Elliott, and J. Sargatal, Eds. Handbook of the Birds of the World, Volume 13.



ENTOMOLOGY

Editor

Donald P. Wright, Jr., BU243



New Listings

Scott#	Denom	Common Name/Scientific Name	Family/Subfamily	
ARGENTINA				
2014 April 14 (Flora & Fauna of Iguazu Falls)				
2725a	8p	<i>Doxocopa linda mileta</i> Boisduval	NYM, Apaturinae	A
2725		MS of 4 (Sc#2725a-d)		
BOSNIA-HERZEGOVINA (Serbia) 2014				
1.10m		Woodland Ringlet, <i>Erebia medusa</i> Fabr.	NYM, Satyrinae	A
1.70m		Small Tortoiseshell, <i>Nymphalis urticae</i> L.	NYM, Nymphalinae	A
2.70m		Marbled White, <i>Melanargia galathea</i> L.	NYM, Satyrinae	A
4m		Mourning Cloak, <i>Nymphalis antiopa</i> L.	NYM, Nymphalinae	A
5.10m		Scarce Swallowtail, <i>Iphiclides podalirius</i> L.	PAP, Papilioninae	A
BRUNEI				
2013 February 28 (Butterflies II) (New Data)				
10c		Great Helen, <i>Papilio sataspes</i> C&R Felder (Cap: <i>P. helenus</i>)	PAP, Papilioninae	A
20c		Gray Glassy Tiger, <i>Ideopsis juvena kinitis</i> Fruhstorfer	NYM, Danainae	A
\$1		Black or Wise Rajah, <i>Charaxes solon echo</i> Butler	NYM, Charaxinae	A
SS \$2		Lime or Checkered Swallowtail, <i>Papilio demoleus</i> L.	PAP, Papilioninae	A
2014 (Butterflies III)				
10c		Mimic, <i>Hypolimnas misippus</i> L. ♀	NYM, Nymphalinae	A
20c		Branded Yeoman, <i>Algia fasciata</i> C&R Felder (Cap: <i>Paduca</i>)	NYM, Heliconiinae	A
\$1		Blue Pansy, <i>Junonia orithya</i> L.	NYM, Nymphalinae	A
2014 April 20 (Butterflies IV)				
10c		Great Blue Mime, <i>Papilio paradoxa telesicles</i> C&R Felder	PAP, Papilioninae	A
20c		Malayan or Crow Eggfly, <i>Hypolimnas anomala</i> Wallace	NYM, Nymphalinae	A
\$1		Clipper, <i>Parthenos sylvia</i> Cramer	NYM, Limenitidinae	A
BURUNDI				
2014 May 19 (Stamperija)				
a	3970fr	Broad Blue-banded Sw'tail, <i>Papilio chrapkowskoides</i> Storace	PAP, Papilioninae	A
b	3970fr	Apollo, <i>Parnassius apollo</i> L.	PAP, Parnassiinae	A
c	3970fr	Common Red Glider, <i>Cymothoe coccinata</i> Hewitson LL: ♂, UR: ♀	NYM, Limenitidinae	A
d	3970fr	Chestnut Tiger, <i>Parantica sita</i> Kollar MS of 4 with narrow white margin	NYM, Danainae	A
a	3970fr	<i>Papilio chrapkowskoides</i> Storace	PAP, Papilioninae	A
b	3970fr	<i>Parnassius apollo</i> L.	PAP, Parnassiinae	A
c	3970fr	<i>Cymothoe coccinata</i> Hewitson, LL: ♂, UR: ♀	NYM, Limenitidinae	A
d	3970fr	<i>Parantica sita</i> Kollar MS of 4 with narrow white margin SS of 4 with wide colored margin	NYM, Danainae	A
Margin		UL: U/I BUTTERFLY (partial image) UR: <i>Acraea</i> Swordtail, <i>Graphium ridleyanus</i> White MR: Citrus Swallowtail, <i>Papilio demodocus</i> Esper	PAP, Papilioninae PAP, Papilioninae	U Z Z Z

BURUNDI (continued)

SS 3970fr	<i>Papilio chrapkowskoides</i> Storace	PAP, Papilioninae	A
Margin	UR: W. Blue Beauty, <i>Salamis cytora</i> Doubleday & Hewitson	NYM, Nymphalinae	Z
	Bot: Blue Salamis, <i>Salamis temora</i> C&R Felder	NYM, Nymphalinae	Z
SS 3970fr	Apollo, <i>Parnassius apollo</i> L.	PAP, Parnassiinae	A
Margin	UR: Crimson Tip, <i>Colotis danae</i> Fabr.	PIE, Pierinae	Z
	CTR: Crimson Tip, <i>Colotis danae</i> Fabr.	PIE, Pierinae	Z
	Bot: Silver-studded Blue, <i>Plebejus argus</i> L. ♀	LYC, Lycaeninae	Z
	LR: Silver-studded Blue, <i>Plebejus argus</i> L. ♂ (verso)	LYC, Lycaeninae	Z
SS 3970fr	<i>Cymothoe coccinata</i> Hewitson, LL: ♂, UR: ♀	NYM, Limenitidinae	A
Margin	UR: Caper White, <i>Belenois aurota</i> Fabr.	PIE, Pierinae	Z
	MR: Red-edged White, <i>Belenois rubrosignata</i> Weymer	PIE, Pierinae	Z
	LR: Calypso Caper White, <i>Belenois calypso</i> Drury	PIE, Pierinae	Z
SS 3970fr	Chestnut Tiger, <i>Parantica sita</i> Kollar	NYM, Danainae	A
Margin	UR & LR: Green Charaxes, <i>Charaxes eupale</i> Drury	NYM, Charaxinae	Z

CENTRAL AFRICA**2014 May 20** (Butterflies I) (Stamperija)

a	750fr	Old World Swallowtail, <i>Papilio machaon</i> L. (Cap: <i>Parthenos sylvia</i>)	PAP, Papilioninae	A
b	750fr	Red Helen, <i>Papilio helenus</i> L. (Cap: <i>Papilio lowi</i>)	PAP, Papilioninae	A
c	750fr	Common Mapwing, <i>Cyrestis maenalis negros</i> Martin	NYM, Cyrestinae	A
d	750fr	Orange Oakleaf, <i>Kallima inachus</i> Boisduval	NYM, Nymphalinae	A
	Margin	UL: Cecropia Moth, <i>Hyalophora cecropia</i> L.	SAT, Saturniinae	Z
		ML: African Moon Moth, <i>Argema mimosae</i> Boisduval	SAT, Saturniinae	Z
		LL: Owl Moth, <i>Brahmaea wallichii</i> Gray	BRA, Brahmaeinae	Z
		UR: <i>Morpho</i> sp.	NYM, Morphinae	Z
		LR: U/I BUTTERFLY		U Z
SS 2650fr		Scarce Bamboo page, <i>Philaethria dido</i> L. (Cap: <i>Siproeta stelenes</i>)	NYM, Heliconiinae	A
	Margin	UL: Mocker, <i>Papilio dardanus</i> Brown	PAP, Papilioninae	Z
		LL: Common Buckeye, <i>Junonia coenia</i> Hübner	NYM, Nymphalinae	Z
		Bot: Question Mark, <i>Nymphalis interrogationis</i> L.	NYM, Nymphalinae	Z
		UR: <i>Diaethria candrena</i> Godart	NYM, Biblidinae	Z
		LR: <i>Cyrestis</i> sp.	NYM, Cyrestinae	U Z

2014 May 20 (Butterflies II) (Stamperija)

a	900fr	<i>Callicore hesperis</i> Guérin-Méneville	NYM, Biblidinae	A
b	900fr	Purple-spotted Swallowtail, <i>Graphium weiskei</i> Ribbe	PAP, Papilioninae	A
c	900fr	Orange Albatross, <i>Appias nero</i> Fabr.	PIE, Pierinae	A
d	900fr	Small Bath White, <i>Pontia chloridice</i> Hübner	PIE, Pierinae	A
	Margin	UL: Blushing Phantom, <i>Cithaeris pireta</i> Stoll	NYM, Satyrinae	Z
		ML: ?Forest Mother-of-Pearl, <i>Salamis parhassus</i> Drury	NYM, Nymphalinae	
		LL: U/I CATERPILLAR		U Z
		LR: <i>Cyrestis</i> sp.	NYM, Cyrestinae	Z
SS 3000fr		Brimstone, <i>Gonepteryx rhamni</i> L.	PIE, Coliadinae	A
	Margin	UL: Tiny stylized BUTTERFLY		S
		ML: U/I BUTTERFLY		U Z
		Bot: U/I BUTTERFLY	Nymphalidae	U Z
		UR: Blushing Phantom, <i>Cithaeris pireta aurorina</i> Weymer	NYM, Satyrinae	Z
		LR: U/I CATERILLAR		U Z

CHAD**2014 April 10** (Cousteau & Darwin) (MS of 2) (Stamperija)

b	300fr	Two-tailed Pasha, <i>Charaxes jasius</i> L. (with Darwin & ape)	NYM, Charaxinae	B
---	-------	---	-----------------	---

FINLAND**2014 March 3** (Congratulations)

d	1st	<i>Polyommatus</i> sp. MS of 5+5 labels	LYC, Polyommatinae	A
---	-----	--	--------------------	---

THE GAMBIA**2013** (2ea MS of 2)

a	135d	Thick-rimmed Sailor, <i>Dynamine chryseis</i> Bates	NYM, Biblidinae	A
b	135d	Caribbean Sailor, <i>Dynamine serina</i> Fabr.	NYM, Biblidinae	A
a	135d	American Painted Lady, <i>Vanessa virginiensis</i> Drury	NYM, Nymphalinae	A
b	135d	Same, different coloration	NYM, Nymphalinae	A

GHANA**1991** (New data from Jose Reis)

1357	600ce	<i>Coniopteryx tineiformis</i> Curtis (Cap: <i>Lacetus</i>)	Coniopterygidae, Coniopteryginae	A
------	-------	--	----------------------------------	---

GREAT BRITAIN (Jersey)**2014** (Shakespeare's 450th Birthday)

	91p	Stylized SWALLOWTAIL	PAP, Papilioninae	S
--	-----	----------------------	-------------------	---

GREECE**2014 April 24** (Months, as booklet and sheet stamps)

	2c	"April" Stylized BUTTERFLIES, LADYBUG, birds, flowers, eggs		S
--	----	---	--	---

GRENADA**2014** (Moths of the World)

NOTE: All the names shown on the stamps are obsolete

a	\$2	Silver Lines, <i>Pseudoips prasinanus</i> L.	NOL, Chloephorinae	A
b	\$2	Cream-spotted Tiger, <i>Epicallia villica</i> L.	ARC, Arctiinae	A
c	\$2	Great or garden Tiger, <i>Arctia caja</i> L.	ARC, Arctiinae	A
d	\$2	Hebe Tiger, <i>Eucharia festiva</i> Hufnagel	ARC, Arctiinae	A
e	\$2	Small Magpie Moth, <i>Anania hortulata</i> L.	CRAM, Pyraustinae	A
f	\$2	Spotted Sulfur, <i>Emmelia trabealis</i> Scopoli	NOC, Acontiinae	A
g	\$2	Cinnabar Moth, <i>Tyria jacobaeae</i> L.	ARC, Arctiinae	A
h	\$2	Small or Wood Tiger, <i>Parasemia plantaginis</i> L.	ARC, Arctiinae	A
i	\$2	Argent & Sable Moth, <i>Rheumaptera hastata</i> L.	GEO, Larentiinae	A
		MS of 9 (a-i)		
a	\$5	Broad-bordered Bee Hawkmoth, <i>Hemaris fuciformis</i> L.	SPH, Macroglossinae	A
b	\$5	Drury's Sphinx, <i>Xylophanes chiron</i> Drury	SPH, Macroglossinae	A
		SS of 2 (a-b)		
a	\$5	Elephant Sphinx, <i>Deilephila elpenor</i> L.	SPH, Macroglossinae	A
b	\$5	Spurge Sphinx, <i>Hyles euphorbiae</i> L.	SPH, Macroglossinae	A
		SS of 2 (a-b)		

GUINEA**2014 March 25** (Stamperija)

a	15000fr	Duke of Burgundy Fritillary, <i>Hamearis lucina</i> L.	RIO, Riodinae	A
b	15000fr	Monarch, <i>Danaus plexippus</i> L.	NYM, Danainae	A
c	15000fr	Old World Swallowtail, <i>Papilio machaon</i> L. ♀	PAP, Papilioninae	A
	Margin:	Chequered Butterfly, <i>Papilio demoleus sthenelus</i> Macleay	PAP, Papilioninae	Z
	SS 40000fr	Common Rose, <i>Atrophaneura aristolochiae</i> Fabr.	PAP, Papilioninae	A
	Margin:	Old World Swallowtail, <i>Papilio machaon</i> L. (Cap: <i>P. glaucus</i>)	PAP, Papilioninae	Z

2014 March 25 (Malaria) (Stamperija)

a	15000fr	<i>Anopheles gambiae</i> Giles	CUL, Anophelinae	B
b	15000fr	Stylized anti-malaria emblem		S
c	15000fr	Stylized anti-malaria emblem		S
		MS of 3 (a-c) Stylized anti-malaria emblem in margin		Z
	SS 40000fr	<i>Anopheles gambiae</i> Giles, also in margin	CUL, Anophelinae	A

GUINEA (continued)		2014 May 15 (Stamperija)	
a	15000fr	Luna Moth, <i>Actias luna</i> L.	SAT, Saturniinae A
b	15000fr	Erichson's Cruiser, <i>Vindula dejone</i> Erichson	NYM, Heliconiinae A
c	15000fr	Rusty-tipped Page, <i>Siproeta epaphus</i> Latreille	NYM, Nymphalinae A
	Margin:	LL: CATERPILLAR & BUTTERFLY	Lepidoptera Z
		UR: <i>Parthenos</i> sp.	NYM, Limenitidinae Z
SS	40000fr	Lilac Clipper, <i>Parthenos sylvia lilacinus</i> Butler	NYM, Limenitidinae A
	Margin:	LL: Blue Pansy, <i>Junonia orithya</i> L.	NYM, Nymphalinae Z
		UR: Rusty-tipped Page, <i>Siproeta epaphus</i> Latreille	NYM, Nymphalinae Z
		MR: <i>Morpho helenor peleides</i> Kollar	NYM, Morphinae Z
		LR: <i>Eueides isabella</i> Stoll (Cap: <i>Euides isabella</i>)	NYM, Heliconiinae Z

GUINEA-BISSAU		2014 February 10 (50th anniv. of Red List) (Stamperija)	
c	650fr	Madeiran Speckled Wood, <i>Pararge xiphia</i> Fabr.	NYM, Satyrinae A
		MS of 5 (a–e)	
	2400fr	SS of 2 (a–b)	
	Margin	LR: Madeiran Speckled Wood, <i>Pararge xiphia</i> Fabr.	NYM, Satyrinae Z

KAZAKHSTAN **2013 December 25**

This species is parthenogenetic and males have never been found. It is given this common name for its leg-waving approach as it attacks its prey. It is also known as the Predatory Bush Cricket.

713b	150te	Spiked Magician, <i>Saga pedo</i> Pallas ♀	TET, Saginae A
713		SS of 3 (Sc#713a–c)	

MALDIVE ISLANDS		2014 April 1 (Butterflies of the Indian Ocean) (Stamperija)	
a	22r	Striped Blue Crow, <i>Euploea mulciber</i> Cramer	NYM, Danainae A
b	22r	Common Mime, <i>Papilio clytia</i> L. (with larva)	PAP, Papilioninae A
c	22r	Common Tiger, <i>Danaus genutia</i> Cramer (with larva)	NYM, Danainae A
d	22r	Tailed Jay, <i>Graphium agamemnon</i> L.	PAP, Papilioninae A
	SS 70r	Madagascan Sunset Moth, <i>Chrysidia rhipheus</i> Drury (& larva)	URA, Uraniinae A
		(Cap: <i>Chrysidia rhipheus</i>)	
	Margin:	LL: Ceylon Blue Glassy Tiger, <i>Ideopsis similis</i> L.	NYM, Danainae Z
		UR: Common Rose, <i>Atrophaneura aristolochiae</i> Fabr.	PAP, Papilioninae Z
		U-MR: Striped Blue Crow, <i>Euploea mulciber</i> Cramer, ♂	NYM, Danainae Z
		L-MR: U/I CATERPILLAR	U Z
		LR: Peacock Pansy, <i>Junonia almana</i> L.	NYM, Nymphalinae Z

MOZAMBIQUE		2013 November 25 (Stamperija)	
a	46m	Lychee Stink Bug, <i>Tessaratomia papillosa</i> L.	Tessaratomidae, Tessaratominae A
b	46m	Luna Moth, <i>Actias luna</i> L.	SAT, Saturniinae A
c	46m	Io Moth, <i>Automeris io</i> Fabr. ♂	SAT, Saturniinae A
d	46m	Walking Flower Mantis, <i>Hymenopus coronatus</i> Olivier	HYM, Hymenopodinae A
SS	175m	Cecropia Moth, <i>Hyalophora cecropia</i> L., also in MR margin	SAT, Saturniinae A
	Margin:	Top: Goliath Stick Insect, <i>Eurycnema goliath</i> Gray	PHA, Phasmatinae Z
		CTR: Hercules Beetle, <i>Dynastes hercules</i> L.	SCA, Dynastinae Z
		LR: Common Bluetail, <i>Ischnura heterosticta</i> Burmeister	COE, Ischnurinae Z

		2013 November 25 (Mushrooms, Insects & Scouts) (Stamperija)	
a	46m	U/I BUTTERFLY	Nymphalidae U B
b	46m	Trimen's Dotted Border, <i>Mylothris trimenia</i> Butler	PIE, Pierinae B
c	46m	BLUSHING PHANTOM, <i>Cithaerias pireta</i> Stoll	NYM, Satyrinae B
d	46m	BUCKEYE, <i>Junonia coenia</i> Hübner	NYM, Nymphalinae B

MOZAMBIQUE (continued)

	SS 175m	<i>Heliconius xanthocles</i> Bates	NYM, Heliconiinae	B
	Margin:	UL: Blushing Phantom, <i>Cithaerias pireta aurorina</i> Weymer	NYM, Satyrinae	Z
		LL: <i>Asterope leprieuri philotima</i> Rebel (Cap: <i>Callithea p.</i>)	NYM, Biblidinae	Z
2014 February 25 (50th anniv. of IUCN Red Book) (Stamperija)				
	SS 175m	UR: American Burying Beetle, <i>Nicrophorus americanus</i> Olivier	SIL, Nicrophorinae	Z
2014 April 30 (Bees) (Stamperija)				
a	46m	Mining Bee, <i>Colletes daviesanus</i> Smith	Colletidae, Colletinae	A
b	46m	Oil-collecting Bee, <i>Centris analis</i> Fabr.	API, Apinae	A
c	46m	Carpenter Bee, <i>Xylocopa valga</i> Gerstaecker	API, Xylocopinae	A
d	46m	<i>Ectemnius</i> sp.	CRA, Crabroninae	A
	SS 175m	Bumblebee, <i>Bombus</i> sp.	API, Apinae	A
	Margin:	LL: Leafcutter Bee, <i>Megachile centuncularis</i> L.	MEGA, Megachilinae	Z
		MR: Western Honeybee, <i>Apis mellifera</i> L.	API, Apinae	Z
		LR: Yellow Jacket, <i>Vespula</i> sp. (partial image)	VES, Vespinae	Z
2014 April 30 (Butterflies I) (Stamperija)				
a	46m	Apollo, <i>Parnassius apollo</i> L.	PAP, Papilioninae	A
b	46m	Popinjay, <i>Stibochiona nicea subucula</i> Fruhstorfer	NYM, Cyrestinae	A
c	46m	Lesser Purple Emperor, <i>Apatura ilia</i> Denis and Schiffermüller	NYM, Apaturinae	A
d	46m	Dark Green Fritillary, <i>Speyeria aglaja</i> L.	NYM, Heliconiinae	A
	SS 175m	Old World Swallowtail, <i>Papilio machaon</i> L. ♀	PAP, Papilioninae	A
	Margin:	LL: <i>Abisara saturata</i> , Moore	RIO, Riodinidae	Z
		UR: <i>Lethe argentata</i> , Leech	NYM, Satyrinae	Z
2014 April 30 (Butterflies II) (Stamperija)				
a	46m	Caper White, <i>Belenois java</i> , Sparrman	PIE, Pierinae	A
b	46m	Regent Skipper, <i>Euschemon rafflesia</i> , Macleay	HES, Pyrginae	A
c	46m	Monarch, <i>Danaus plexippus</i> L. ♂	NYM, Danainae	A
d	46m	Blue Emperor, <i>Papilio ulysses</i> L.	PAP, Papilioninae	A
	SS 175m	Orchard Swallowtail, <i>Papilio aegaeus</i> , Donovan	PAP, Papilioninae	A
	Margin:	LL: Blue Emperor, <i>Papilio ulysses</i> L.	PAP, Papilioninae	Z
		UR: Chain Swordtail, <i>Graphium aristeus</i> Stoll	PAP, Papilioninae	Z
		MR: Red-banded Jezebel, <i>Delias mysis</i> Fabr.	PIE, Pierinae	Z
		LR: Cairns Birdwing, <i>Troides priamus euphorion</i> Gray	PAP, Papilioninae	Z
NEW ZEALAND 2014 July 2 (New Zealand Landmarks/Sculptures)				
	2532o	80c Sandfly Sculpture, <i>Austrosimulium</i> sp.	SIM, Simuliinae	
NIGER 2014 June 25 (Stamperija)				
a	750fr	Monarch, <i>Danaus plexippus</i> L.	NYM, Danainae	
b	750fr	Rusty-tipped page, <i>Siproeta epaphus</i> Latreille	NYM, Nymphalinae	
c	750fr	Red Pierrot, <i>Talicauda nyseus</i> Guérin-Méneville	LYC, Polyommatainae	
d	750fr	Cramer's 88-Butterfly, <i>Diaethria clymena</i> Cramer	NYM, Biblidinae	
	Margin:	UL: Cramer's 88-Butterfly, <i>Diaethria clymena</i> Cramer	NYM, Biblidinae	
		LR: Black-veined White, <i>Aporia crataegi</i> L.	PIE, Pierinae	
	SS 2500fr	Monarch, <i>Danaus plexippus</i> L. (plus two in margin)	NYM, Danainae	
ST. VINCENT 2013 April 4 (Caribbean Sea Shells) (MS of 5)				
	3847	Margin Top: Stylized BUTTERFLY	Lepidoptera	S

SOLOMON ISLANDS**2013** (Thailand 2013) (Stamperija)

a	\$7	Australian Painted Lady, <i>Vanessa kershawi</i> McCoy	NYM, Nymphalinae	A
b	\$7	Common Banded Peacock, <i>Papilio crino</i> Fabr.	PAP, Papilioninae	A
c	\$7	Banded Orange Heliconian, <i>Dryadula phaetusa</i> L.	NYM, Heliconiinae	A
d	\$7	Red-spotted Purple, <i>Limnitis arthemis astyanax</i> Fabr.	NYM, Limenitidinae	A
	SS \$35	Common Buckeye, <i>Junonia coenia</i> Hübner	NYM, Nymphalinae	A
	Margin:	UR: Blue Emperor, <i>Papilio ulysses</i> L.	PAP, Papilioninae	Z
		LR: Purple Sapphire, <i>Heliophorus epicles</i> Godart	LYC, Lycaeninae	Z

2014 March 10 (Stamperija)

a	\$7	Question Mark, <i>Nymphalis interrogationis</i> L.	NYM, Nymphalinae	A
b	\$7	European Stag Beetle, <i>Lucanus cervus</i> L.	LUC, Lucaninae	A
c	\$7	White-tailed Bumblebee, <i>Bombus lucorum</i> L.	API, Apinae	A
d	\$7	Scarlet Dragonfly, <i>Crocothemis erythraea</i> Brullé	Libellulidae, Sympetrinae	A
	SS \$35	Top: Roesel's Bush-cricket, <i>Metrioptera roeselii</i> Hagenbach	TET, Tettigoniinae	B
		Bot: Marbled White, <i>Melanargia galathea</i> L.	NYM, Satyrinae	B
	Margin:	UR: Seven-spot Ladybird, <i>Coccinella septempunctata</i> L.	COC, Coccinellinae	Z
		LL: Wart-biter Bush-cricket, <i>Decticus verrucivorus</i> L.	TET, Decticinae	Z
		LR: High Brown Fritillary, <i>Fabriciana adippe</i> Schiffermüller	NYM, Heliconiinae	Z

2014 March 3 (Fight Against Malaria) (Stamperija)

c	\$7	<i>Anopheles</i> sp.	CUL, Anophelinae	
	SS \$35	Nurse & people. Margin: <i>Anopheles</i> sp.	CUL, Anophelinae	

SURINAM**2014**

a	B	Map Butterfly, <i>Araschnia levana</i> L.	NYM, Nymphalinae	A
b	\$1.45	Moloney's Io Moth, <i>Automeris moloneyi</i> Druce	SAT, Hemileucinae	A
c	\$2	Common Wood Nymph, <i>Cercyonis pegala</i> Fabr.	NYM, Satyrinae	A
d	\$2.50	Large Marble, <i>Euchloe ausonides</i> Lucas	PIE, Pierinae	A
e	\$3.50	<i>Hypanartia lethe</i> Fabr.	NYM, Nymphalinae	A
f	\$4.50	Great Spangled Fritillary, <i>Speyeria cybele</i> Fabr.	NYM, Heliconiinae	A
g	\$5.50	Blue Metalmark, <i>Lasaia sula</i> Staudinger	RIO, Riodininae	A
h	\$6	Bog Copper, <i>Lycaena epixanthe</i> Boisduval & LeConte	LYC, Lycaeninae	A
i	\$7	Tropical Dotted Border, <i>Mylothris rhodope</i> Fabr.	PIE, Pierinae	A
j	\$8	Clipper, <i>Parthenos sylvia</i> Cramer	NYM, Limenitidinae	A
k	\$9	Lilac Tree Nymph, <i>Sallya amulia</i> Cramer	NYM, Biblidinae	A
l	\$10	Red Admiral, <i>Vanessa gonerilla</i> Fabr.	NYM, Nymphalinae	A
		MS of 12 (a-l)		

SWEDEN**2014 May 8** (Summer Greetings)

2729b	1st	Balloons carrying LADYBUG, candy, gift & trumpet	Coccinellidae	S
2729		Vert strip of 5 (Sc#2729a-e)		
2729f		Bklt pane 10 (2ea Sc#2729a-e)		

TANZANIA**2013 July 7** (Paintings of Flowers)

2684a	1200sh	Roses, building, DRAGONFLY, bird, nest	Odonata	C
2684b	1200sh	Begonias with BUTTERFLIES	Lepidoptera	C
2684h	1200sh	Hydrangeas & BUTTERFLY at UR	Lepidoptera	C
2684		MS of 8 (Sc#2684a-h)		

TOGO**2013 November 15** (Fight Against Malaria) (Stamperija)

c	750fr	Malaria Mosquito, <i>Anopheles</i> sp.	CUL, Anophelinae	B
	SS 2500fr	Margin: Malaria Mosquito, <i>Anopheles</i> sp.	CUL, Anophelinae	Z

2014 April 10 (Stamperija)

a	750fr	Calypso Caper White, <i>Belenois calypso</i> Drury	PIE, Pierinae	A
b	750fr	Mocker Swallowtail, <i>Papilio dardanus</i> Brown ♂	PAP, Papilioninae	A
c	750fr	Gaudy Commodore, <i>Precis octavia</i> Cramer	NYM, Nymphalinae	A
d	750fr	Large Striped Swordtail, <i>Graphium antheus</i> Cramer	PAP, Papilioninae	A
	SS 2500fr	Coppery Swordtail, <i>Graphium latreillianus</i> Godart	PAP, Papilionidae	A
	Margin:	UL: Blue Pansy, <i>Junonia orithya</i> L.	NYM, Nymphalinae	Z
		LL: African Map Butterfly, <i>Cyrestis camillus</i> Fabr.	NYM, Cyrestinae	Z
		UR: Calypso Caper White, <i>Belenois calypso</i> Drury	PIE, Pierinae	Z

2014 May 20 (Butterflies of Togo) (Stamperija)

a	650fr	Strange Forester, <i>Bebearia elpinice</i> Hewitson	NYM, Limenitidinae	A
b	650fr	Green Orange Forester, <i>Euphaedra zampa</i> Westwood	NYM, Limenitidinae	A
c	650fr	Cutter's Forester, <i>Bebearia cutteri</i> Hewitson	NYM, Limenitidinae	A
d	650fr	Common Red Glider, <i>Cymothoe coccinata</i> Hewitson	NYM, Limenitidinae	A
		MS of 4 (a–d)		
a	950fr	Blue Diadem, <i>Hypolimnias salmactis</i> Drury	NYM, Nymphalinae	A
b	950fr	Common Commander, <i>Euryphura chalcis</i> C&R Felder	NYM, Limenitidinae	A
		MS of 2 (a–b)		

TONGA (Niuafu'ou)**2014 May 22** (Butterflies III)

a	\$11.30	Small Greasy, <i>Acraea andromacha</i> Fabr.	NYM, Heliconiinae	A
b	\$16.90	Spotted Crow, <i>Hypolimnias antilope</i> Cramer	NYM, Nymphalinae	A
c	\$28	Monarch, <i>Danaus plexippus</i> L., ♂	NYM, Danainae	A

TURKEY**2013 May 29** (130th Anniv. of Beypezari District)

B305	1.10L+1k	Two Stylized BUTTERFLIES	Lepidoptera	S
------	----------	--------------------------	-------------	---

2014 (World Environment Day)

a	1.25L	Western Honeybee, <i>Apis mellifera</i> L.	API, Apinae	A
b	1.25L	Western Honeybee, <i>Apis mellifera</i> L.	API, Apinae	A
c	2.50L	Western Honeybee, <i>Apis mellifera</i> L.	API, Apinae	A
		SS of 3 (a–c) (hexagonal shape)		

UGANDA**2014 February 24** (Bees) (Stamperija)

a–d	4×2500sh	Western Honeybee, <i>Apis mellifera</i> L.	API, Apinae	A
	Margin:	Beekeeper with hive frame and bees		Z
	SS 7500sh	Western Honeybees, <i>Apis mellifera</i> L. (on comb)	API, Apinae	A
	Margin	CTR: Western Honeybees, <i>Apis mellifera</i> L. (enlarged)	API, Apinae	Z

URUGUAY**1999 September 10** (New data from Jose Reis)

1811c	7p	<i>Euryptidia univitta</i> Hampson (<i>Paratype</i> or <i>Metalobosia</i> of some)	ARC, Lithosiinae	A
-------	----	---	------------------	---

VANUATU**2012 December 5** (Greetings)

1051	160v	Aerial view of islands, Stylized BUTTERFLIES	Lepidoptera	C S
------	------	--	-------------	-----

BIOLOGY REFERENCE WEBSITES

This section contains a listing of web links to on-line references relating to biology topics on stamps and general philatelic information. We are providing this information to assist members in research and not to endorse the sites listed in any way. If readers know of, or use other useful sites, please send the links to your editor and we will include them in future editions. New entries since the last publication are indicated with an asterisk (*).

STAMP ISSUES

Cyber Stamps. On-line postage stamp catalogue of worldwide topical issues.

<http://www.cyberstamps.com>

Delcampe. Worldwide listings and illustrations of stamps for sale.

<http://stamps.delcampe.net/page/category/cat,-1,language,E.html>

Neofila. Modern issues from Russia, Eastern Europe, and Baltic States.

<http://www.neofila.com/>

Stamperija. Listings and illustrations of thematic issues from countries located in Africa, Asia, and Oceania produced by Stamperija, Ltd., under contract to several postal administrations.

<http://www.stamperija.eu/index.php>

Stanley Gibbons. Searchable on-line stamp catalogue from Stanley Gibbons.

<http://www.allworldstamps.com/>

Zillions of Stamps. Worldwide listings and illustrations of stamps for sale.

<http://www.zillionsofstamps.com/>

GENERAL

Fauna-Stamps. Listings of stamps for sale (mainly new issues) on all sorts of biological themes including Cats, Dogs, Horses, Birds, Butterflies, Paleontology, Flora, and WWF animal stamps.

<http://www.fauna-stamps.com/>

Tree of Life Web Project. Worldwide collaborative effort to map the genome of every organism on earth and to establish their relationships to one another.

<http://www.tolweb.org/tree>

Zip Code Zoo. Links to taxonomic identification for all areas of biology.

<http://zipcodezoo.com/>

BOTANY

Encyclopedia of Plants. All kinds of information about plants including cultivation. Searchable by common name or scientific name. Grouped by plant types.

<http://www.botany.com/>

Fungal Biodiversity Center. Dutch site under the Royal Netherlands Academy of Science and Arts dealing with the taxonomy and evolution of fungi. Includes searchable taxonomic databases.

<http://www.cbs.knaw.nl/>

International Association for Plant Taxonomy. Links for the standard codes on taxonomy and nomenclature for algae, fungi, and plants.

<http://www.iapt-taxon.org/nomen/main.php>

Lichens of North America. Many photos of lichens and links to related sites.

<http://www.lichen.com/>

ICHTHYOLOGY

FishBase. A searchable database developed at the WorldFish Center in Taiwan in collaboration with the Food and Agriculture Organization of the United Nations. Contains all you ever wanted to know about fishes.

http://fishbase.sinica.edu.tw/home_tw.htm

MAMMALS

Feline Philately Homepage. All sorts of cat stamps, postmarks, and related articles.

<http://www.catstamps.org/>

ENTOMOLOGY:

Cercopoidea Organised On Line. Taxonomic database operated under the auspices of *Université Pierre-et-Marie-Curie* in Paris and dedicated to the insects Cercopoidea, which belong to the Hemiptera order.

<http://rameau.snv.jussieu.fr/cool/index.php>

FUNET. Finnish university share network site containing updated taxonomic listings for insects, especially Lepidoptera. It also has limited listings for mammals, birds, and plants.

<http://www.nic.funet.fi/pub/sci/bio/life/intro.html>

International Odonata Research Institute. Information about dragonflies and damselflies, including listings by geographical area, taxonomy, and links to related sites.

<http://www.iodonata.net/>

Natural History Museum. British site containing Lepidoptera generic names and type species listings.

<http://www.nhm.ac.uk/research-curation/research/projects/butmoth/>

HERPETOLOGY:

AmphibiaWeb. Provides access to information on amphibian declines, conservation, natural history, and taxonomy. Includes an on-line database of species and links to many related sites.

<http://amphibiaweb.org/index.html>

The Reptile Database. Uetz, P. (Ed.). Taxonomic database that provides basic information about all living reptile species, such as turtles, snakes, lizards, and crocodiles, as well as tuataras and amphisbaenians, but does not include dinosaurs.

<http://reptile-database.reptarium.cz/>

Sea Turtle Postage Stamps of the World. Shows over 1800 images of stamps, maxi cards, covers, and cinderellas that feature the sea turtle as the subject. Includes checklists by country, new issues, and links to many related sites.

<http://www.2xtreme.net/~nlinsley/>

World-Wide List of Turtles and Tortoises on Stamps. This on-line listing was produced by Donald N. Riemer, a former member of the Biology Unit and contributor to this journal, who passed away in June 2012. The site contains a checklist of stamps by country along with appendixes listing labels, cinderellas, turtle look-alike stamps, and post offices with “turtle” or “tortoise” in their name.

<http://www.personal.psu.edu/crr2/turtstmp/>

ORNITHOLOGY

Birds of the World. All sorts of bird stamps by country and species, including new issues.

<http://www.bird-stamps.org/>

Birds on Stamps. Listings of local, unofficial, and cinderella issues featuring birds—last updated in 2007.

<http://www.birdstamp.com/>

Theme Birds on Stamps. All sorts of bird stamps by country and species, including new issues.

<http://www.birdtheme.org/>

PALEONTOLOGY:

Dinosaur Illustrations. Galleries of dinosaur illustrations by species. Includes links to paleontology stamp sites and other related sites.

<http://www.search4dinosaurs.com/>

Paleophilatelic. Catalogue of Paleontology related philatelic items, such as paleontologists, fossils, prehistoric animals, dinosaurs, early man, museums on official post stamps, envelopes, and post cards. Contains links to related news items and sites.

<http://www.paleophilatelic.eu/index.html>

GLOSSARY OF TERMS

This section lists the definitions of acronyms, abbreviations, and code letters used throughout this journal. This listing does not include abbreviations used for the name of a taxonomic author, or commonly used symbols.

Checklist Codes:

Br	Branch	A	Subject is the primary design element
Fl	Flowers (with or without other plant parts)	B	Subject is only part of the main design
Fr	Fruit (including seeds, nuts, grains, etc.)	C	Subject is a minor representation
FrV	Grain head with sheaf or stalk	G	Subject is a generalized depiction
L	Lichen	R	Related subject (e.g., scientist, equipment)
M	Mushroom or fungus	S	Subject is a stylized or symbolic depiction
T	Trees (without flowers or fruit)	U	Subject is unidentified or unidentifiable
V	Various (vines, vegetables, roots, leaves, etc.)	X	Subject is a lookalike (e.g., mushroom cloud)
Wr	Wreath	Z	Subject is in the margin or selva
Wr*	Head wreath (or chaplet)	*	Subject depicted in natural colors

Acronyms and Abbreviations:

AAPE	American Association of Philatelic Exhibitors	ovpt	overprinted
anniv	anniversary	perf	perforated
APC	American Philatelic Center (Bellefonte, PA)	photo	photogravure
APS	American Philatelic Society	ptg	painting or artwork
ATA	American Topical Association	R	right position indicator
bkl	booklet	s/a	self-adhesive
Cap	captioned	Sc#	Scott Catalogue number
CTO	canceled to order	s-o-s	stamp on stamp
CTR	center position indicator	sp.	species
DS	deluxe sheet	SS	souvenir sheet
Ed.	Editor	ssp.	sub-species
Expo	Exposition	s/t	se-tenant
horiz	horizontal orientation	surch	surcharged
imperf	imperfurate	UL	upper left position indicator
Intl.	International	unwmk	un-watermarked
L	left position indicator	UPU	Universal Postal Union
litho	lithography	UR	upper right position indicator
LL	lower left position indicator	US	United States
LR	lower right position indicator	USPOD	United States Post Office Department
mm	millimeter	USPS	United States Postal Service
MS	miniature sheet	var.	variety
ML	middle left position indicator	vert	vertical orientation
MR	middle right position indicator	Vol	Volume
N/A	not applicable (or not available)	wmk	watermarked
nd	non-denominated	WWF	World Wildlife Federation
NTSS	National Topical Stamp Show	Yv#	Yvert & Tellier Catalog number
NWF	National Wildlife Federation		

BIOLOGY UNIT MEMBERS LIST 2014

Codes for major collecting categories are in parentheses following the address.

0=Paleontology (incl. fossils, prehistoric)	5=Birds
1=Flora and Fauna	6=Fish and Fishing
2=Botany	7=Insects (incl. Arachnids)
3=Zoology	8=Mammals (wild and domestic)
4=Amphibians and Reptiles	9=Marine Invertebrates

- LM65 Adams, Francis; APO #420308, San Diego, CA 92124 (fran@franadams.com) (0)
- LM70 Adler, Leslie R.; P.O. Box 65045 North Hill RPO, Calgary, AB T2M 1R4 Canada
- LM73 Ahrendsen, Jon; 728 Maple Lane, Clarion, IA 50525 (jonahr@netins.net) (8)
- LM80 Ahshapanek, Dr. Don; 1008 Mimosa Drive, Anadarko, OK 73005 (nentico@netride.net) (1, 2, 7)
- 1817 Albright, Janis; 29 Coach Road, So. Portland, ME 04106 (2, 5, 8, marine life, flora, conservation, dogs)
(catcherdog@maine.rr.com)
- 1830 Anderson-Decina, Rick J.; 622 Daffon Drive, Indianapolis, IN 46227-2765 (7)
(rickandersondecina@illinoisalumni.org)
- 1834 Andrews, Sarah M.; 11528 Scottsbury Terrace, Germantown, MD 20876 (5)
(editor@sundragonediting.com)
- 1567 Applebaum, Doris; 13680 Winchester, Oak Park, MI 48237-1360 (ibis4247@sbcglobal.net) (2, 5, 8)
- 1856 Arias, Orlando, 1221 1st Avenue, #401, Seattle, WA 98101 flowers from countries beginning with A
(orlarias99@gmail.com)
- LM22 Bajema, Dr. Carl; 940 Shawmut Court, Grand Rapids, MI 49504 (bajemacarl@comcast.net) (1, 8)
- 1677 Barylski, Mildred; 6334 Beryl Road, Alexandria, VA 22312-6303 (dbarylski@juno.com) (2, 8)
- 1848 Batdorf, Lynn; 6005 Kingsford Road, Bethesda, MD 20817-2449 (hollykids@comcast.net) (2)
- 1846 Boehning, Harold; 8523 Thackery St., Apt. 3204, Dallas, TX 75225-3910 (n.boehning@earthlink.net) (1)
- 1820 Bono, Peter R.; P.O. Box 705, Yarmouth Port, MA 02675 (pbono@prba.com) (5)
- 768 Bouzek, Maurine; Box 407, Highmore, SD 57345-0407 (1, 5, 7, 8)
- 450 Bratlie, Byron H.; 9705 Lake Bess Road #909, Winter Haven, FL 33884 (BBratlie@gmail.com)
- 1364 Braun, Charles E.; 7 Winthrop Drive, Aiken, SC 29803-6272 (charlesebraun@gmail.com) (5)
- LM47 Brown, Harriet; 7328 Barr Way, Sacramento, CA 95831 (2, 7)
- 1796 Brunt, Michael (address withheld) (robins.mike@charter.net) (5, Audubon, Darwin)
- 1800 Bruth, Eric; 92 Rue Maurice Arnoux, 92120 Montrouge, France (eric.bruth@gmail.com) (frogs, toads)
- 1853 Burch, Ben; 3112A Lewiston Ave, Berkeley, CA 94705-2717 (benburch1950@hotmail.com) (0, 3)
- 1445 Burness, Mrs. Robert (address withheld)
- 274 Byrnes, Patricia E.; 410 Edgar Road, Westfield, NJ 07090 (2, 8)
- LM72 Chandler, Richard T.; 4508 NE 49th Street, Vancouver, WA 98661 (2, 6, 9)
- 1835 Clark, Michael; 130 Horseshoe Hill Rd, Pound Ridge, NY 10576 (medicine, pharma)
(mikalcee@earthlink.net)
- 1833 Cochrane, William; 9/30 William Street, Castlemaine, Victoria 3450 Australia (2, 5)
(enquiries@philatelicdatabase.com)
- 1804 Coin, Ivan; Piazza Luzzatti, 31045 Motta di Livenza, Italy (coin@tele2.it) (2, mushrooms, wine, golf)
- 1424 Congrove, Jack R.; P.O. Box 33092, Fort Lewis, WA 98433-0092 (jackcongrove@comcast.net) (7)
- 1799 Cooper, Phill; 7538 E Desert Vista Rd, Scottsdale, AZ 85255 (pac1954@cox.net) (7)
- 1847 Corman, Paula; 2250 Manhattan, Wichita, KS 67204 (2, 5, 8)
- 964 Crane, Leslie E.; 787 Coon Hollow Rd, Shinglehouse, PA 16748
- 1269 Dahle, Christopher E.; 1401 Linmar Dr NE, Cedar Rapids, IA 52402-3724 (chris-dahle@fastermac.net) (2)
- 1857 Das, Indraneil; Institute of Biodiversity & Environmental Conservation, University of Malaysia Sarawak,
Kota Samaraman, Sarawak 94300 Malaysia (4, Tin Tin, coelacanths)
- 1768 Davidson, Larry; 1410-100 Queen St. N., Kitchener, ON N2H 2H6 Canada (beavers, UN, Canada)
(larrydavidson@sympatico.ca)
- 1860 Davis, Asher B.; 28 Bancroft Road, Northampton, MA 01060 (theherpkid@gmail.com) (4)

- 1706 Douglas, Robert G.; P.O. Box 6, Aminya St, Mansfield, QLD 4122 Australia (7)
(rdouglas42@optusnet.com.au)
- 1837 Drago, Cláudio; Al. Santos 734 ap.25, Cerqueira Cesar, São Paulo SP 01418-100 Brazil (4)
(cddrago@uninet.com.br)
- 1790 Edholm, Keith & Carol (address withheld)
- 1850 Eichler, Dr. Vic; 10867 Dutch Settlement Rd, Three Rivers, MI 49093 (vic33@frontier.com) (4)
- 1854 Ericson, Jack; 19 Spring St, Westfield, NY 14787-1514 (jtericson@yahoo.com) Darwin
- LM45 Fibel, Joseph L., Jr.; 94 Beverly Rd, New Rochelle, NY 10804 (jfibel@msn.com) (5)
- 581 Foster, Merrill; 1119 N. Maplewood Ave, Peoria, IL 61606-1037 (fossil@bradley.edu) (2, 8)
- LM82 Freytag, Paul H.; 2104 Palmbrooke Court, Lexington, KY 40513-1125 (freytag2104@windstream.net) (7)
- 1781 Gerner, Glen; 3157 Hillview Court, Edgewood, KY 41017 (rrdesign1us@yahoo.com)
- 1714 Gilman, Bob; 702 Canyon Drive, Pacifica, CA 94044-2404 (drragilman@comcast.net) (5)
- 503 Glatz, Roberta; 524 Copeland Hill Road, Feura Bush, NY 12067-2052 (7)
- LM66 Gomez, Dr. Edgardo D.; 108 Batangas North St., Ayalabang, Muntinlupa City 1780 Philippines (4, 8)
(edgomez@msi01.cs.upd.edu.ph)
- 1808 Grabulosa Comaño, Salvador; Historiador Pere Tomie No. 32, 08695 Bagà Barcelona, Spain (mushrooms)
(ayyagrabulosa@terra.es)
- 1855 Gray, John; 47 Barrons Way, Comberton, Cambridge CB23 7EQ UK (Darwin, Linnaeus, plant genetics)
(jcg2@cam.ac.uk)
- 1425 Greve, John H.; 334 24th Street, Ames, IA 50010-4867 (2)
- 1533 Grimstad, Paul R.; 52022 Heather Cove, South Bend, IN 46635 (7)
- 1803 Grothaus, Craig L.; 39 Crestview Rd, Mountain Home, AR 72653 (grot@centurytel.net) (8, UNESCO)
- 1751 Halbedel, Elaine M.; P.O. Box 151, Silver City, NM 88062-0151 (inannaqoh@aol.com)
- 1254 Hamilton, Sarah E.; 900 Chapman Street, Ionia, MI 48846-1018 (1, 2)
- 1831 Hamman, Dawn; 334 Rio Terra, Venice, FL 34285 (dawnhamman@aol.com) (2, 5, manatees)
- 1387 Hammond, Edward; P.O. Box 823, Branford, CT 06405 (edstamp@comcast.net) (5)
- 698 Hanks, Alan J.; 34 Seaton Drive, Aurora, ON L4G 2K1 Canada (alan.hanks@sympatico.ca) (7)
- 1818 Harrison, Terry (address withheld) (tharrison52@roadrunner.com) (mushrooms)
- 1792 Hayward, Jeffrey A.; P.O. Box 60180, Staten Island, NY 10306 (stamps@jeffhayward.com) (5)
- 1750 Herbert, Barbara; 2805 Yosemite Ave, Alameda, CA 94501-1666 (alamedaherbert@yahoo.com)
- 1685 Herrmann, Lois C. (address withheld) (5)
- 1492 Herzog, David (address withheld) (7)
- 1852 Hicks, Earle; Unit A103, 1515 Forrest Nelson Blvd, Port Charlotte, FL 33952-2104 (many topics)
- LM58 Hinkel, Manfred; Am Rotes Tor 63, D55232 Alzey, Germany (Manfred.Hinkel.AZ@t-online.de)
- 1654 Holland, F. D., Jr.; Parkwood Place #342, 749 S. 30th St., Grand Forks, ND 58201 (0)
(budholland@gra.midco.net)
- 1850 Hoppe, Patricia J. (address withheld)
- 1619 Hunter, Ian; 228 7th Ave NE, Calgary, AB T2E 0M7 Canada (ighunter@shaw.ca) (4, 6, 8)
- 1776 Johnson, Donald E.; 40 S. Forest Ave, Naperville, IL 60540 (don43.j@sbcglobal.net)(owls, woodpeckers)
- 1843 Jones, Susan B.; 1663 Francis Dr, Pingree, IL 60140 (sjones1665@comcast.net) (5, 9, coelacanth)
- 1743 Jordan, Terry L.; P.O. Box 650097, Potomac Falls, VA 20165-0097 (7)
- 1482 Kavalecs, Stephen; 971 Lark Drive, Harrisburg, PA 17111 (5, 7, 8)
- LM42 Kley, Dr. Ruben Reis (address withheld) (7)
- LM64 Komadowski, Henry E.; 1411 12th Ave N, Lethbridge, AB T1H 1R2 Canada (henryk2@telus.net) (6)
- LM60 Kritzman, Ellen B.; 107010 SW Cowan Rd, Vashon, WA 98070-3052 (ekritzman@centurytel.net) (8)
- 674 Law, A. Ronald; 3607 Utah Drive NW, Calgary, AB T2N 4A6 Canada (lawron@shaw.ca)
- 1821 Lerner, William (address withheld) (wlerner44@gmail.com) (4, 7)
- LM77 Lindstrom, Kris P.; P.O. Box 51008, Pacific Grove, CA 93950 (kplind@redshift.com) (6, 7, 8, 9)
- LM67 Littlewood, Roland K.; 5109 Coney Weston Place, Madison, WI 53711 (rklittle@wisc.edu) (2)
- 1841 Lloyd, Randy; P.O. Box 1963, North Platte, NE 69103-1963 (rwllloyd_2000@yahoo.com) (7, malaria)
- 1825 Matveev, Alexey; Radouňova 2681/24, Prague 15500, Czech Republic (1, flora, fauna)
(alexey.matveev@fauna-stamps.com)

- 1810 Mauney, Patrick; P.O. Box 1236, Sagamore Beach, MA 02562 (pinetops236@earthlink.net) (trees, Darwin)
- 1830 McDonald, Thomas; 3350 Uplands Dr, Nanaimo, BC V9T 2T5 Canada (mcdonaldte@shaw.ca) (4, 6, 7, 9)
- 1839 McNair, Stephen; 605 Warrington Lane, Southlake, TX 76092 (mcnairs1@aol.com) (9)
- 1435 Mertz, Glenn G.; 625 N. Lafayette Street, Allentown, PA 18842-1666 (ggmertz@juno.com) (1, 7)
- 1840 Miguelgorry, James; 846 N. Sixth St, San Jose, CA 95112 (5)
- 1730 Mirando, Peter A.; 83 Sunset Blvd., Angola, NY 14006-1038 (drpmira@mac.com)
- 1681 Mistretta, Dr. Paul A.; 722 Indian Manor Ct, Stone Mountain, GA 30083 (pamistretta@earthlink.com) (2)
- 1859 Mohr, Rebecca; 551 Sugar Camp Road, Manchester, TN 37355-4922 (2, 7, 9)
- 1729 Moravec, Zdenek; Vrazska 331, 252 28 Cernosice, Czech Republic (moravec.zd@volny.cz)
- 1822 Norman, Sven; Båling 118, Gnarp SE-820 77 Sweden (sven.baling@telia.com) (7, butterflies)
- 981 Nystuen, Mrs. John (Gwen); 1016 Olivia Ave, Ann Arbor, MI 48104-3929 (gnystuen@umich.edu) (4)
- 1815 Ovrebo, Clark; 1018 Washington, Edmond, OK 73034 (mycena@cox.net) (2, mushrooms)
- 1757 Palazzo, Don; dba Westminster Stamps, P.O. Box 456, Foxboro, MA 02035-0456
(stamps@westmin.win.net)
- 1777 Patterson, Joanne; 4814 Sugar Plum Court, Wilmington, DE 19808-1724 (5, 7)
(joannepatterson07@comcast.net)
- 1310 Peabody, Robert H.; 50 Alfalfa Hill, Milford, NJ 08848-1727 (pagprolog@aol.com) (2)
- 1823 Peggy J. Slusser Library, Postal History Foundation, 920 North First Ave, Tucson, AZ 85719
(slusser.library@gmail.com)
- 1813 Pereira, John; 193 Blackmer St, New Bedford, MA 02744 (johnPereira@gmail.com) (2)
- LM68 Prince, Michael J.; "Dorset," Grove Road, Ash Vale, Aldershot, Hants GU12 5BD England (1)
(michael.prince@bushinternet.com)
- 1827 Rajh, Edo; Davora Zbiljskog 1, 10000 Zagreb, Croatia (edorajh@gmail.com) (2, mushrooms)
- 1632 Reif, William; 500 35th St SE, Cedar Rapids, IA 52403
- 1725 Reineke, Mark; 925 Boychuk Drive, Saskatoon, SK S7H4L6 Canada (reinekem@stf.sk.ca) (6, fish)
- LM61 Ridgely, Dr. Beverly S. (address withheld) (4, 5, 8)
- LM83 Roman, Richard A. (address withheld) (dick.roman@sbcglobal.net) (2, 4, 5, 6, 8)
- LM81 Rong-yuan, Lian; P.O. Box 19-25, Chung-Li, 320 Taiwan (8, 9)
- 1844 Russ, Gina; 48 Thompson Ave, Fort Mitchell, KY 41017-2709 (3, 4, 5)
- 1719 Ryan, Laurie J.; 4134 Wenbrook Dr, Cincinnati, OH 45241 (hedgehog, ermine, fish, endangered spp)
(doxiemom7@gmail.com)
- 1709 Salkin, Dr. Cyril; 10 Elswick Green, Marshside, Merseyside, PR9 9XT UK (salkin@talktalk.net)
- 1603 Samford, Arlene; P.O. Box 1164, Cherokee, NC 28719-1164 (4)
- 1849 Schoen, Fred; 1218 Third Ave. #2000, Seattle, WA 98101 (fredsfredo@yahoo.com) (5)
- 1845 Setterberg, Susan (address withheld) (smsetterberg@yahoo.com) (5)
- 1778 Sheppard, Stuart; 27 Hillview Dr., RR#1, Bobcaygeon, ON K0M 1A0 Canada (tigers, roses)
- 1832 Shively, J. Dale; 106 Lazy Lane, San Marcos, TX 78666-9538 (dale.shively@tpwd.state.tx.us) (6)
- 1712 Shore, Randall L.; 20385 Pintail Lane, Schooner Bay, Onancock VA 23417 (randalllee@verizon.net) (5)
- 1842 Siegling, Evan; 243 Landover Rd, Gahanna, OH 43230-3175 (sieginge@yahoo.com) (0, Harry Potter)
- LM49 Skaptason, James L. (address withheld) (7)
- 1836 Skog, Laurence; 611 Roberts Dr NW, Vienna, VA 22180-4178 (treed59@gmail.com) (2)
- LM79 Skvara, Dr. Frederick C.; P.O. Box 6228, Bridgewater, NJ 08807 (fcskvara@bellatlantic.net) (5, 7, 9)
- 1252 Stansfield, William T.; 310 Penfield Road, Fairfield, CT 09824-6614 (wtstans@aol.com) (5, 8)
- LM69 Stragnell, Robert; 80 Lyme Rd #369, Hanover, NH 03755-1235
- 1851 Strydom, Pieter (address withheld) (pstrydom@msn.com) (flowers)
- 1471 Stumpenhous, Cathie (address withheld) (clstumpe@hotmail.com) (1)
- 1745 Svoboda, Wayne; 8828 N. Bennett Ave, Evanston IL 60203-1901 (1, 5, flora, fauna esp birds)
- LM43 Truhon, Dorothy; 4000 NW 20th Dr, Gainesville, FL 32605 (8)
- LM84 Urbani, Bernardo; Apartado 66.755, Caracas 1061-A, Venezuela (urbaniglobal@yahoo.com)
- 1838 van Laere, Roger; Grote Stoppelbergen 15, 2040 Antwerpen, Belgium (roger-van-laere@skynet.be) (5)
- 1824 Vassuer, Mary; 4149 Ruxton Lane, Columbus, OH 43220
- 792 Vaughn, Charles R.; 1306 Frederick Avenue, Salisbury, MD, 21801 (essc@comcast.net) (2, 5)

- 1858 Vincent, Michael A.; 609 French Dr, Oxford, OH 45056 (fabaceae@hotmail.com) (2)
 1809 Vogel, Dr. Beatrice; 46 S. Howie, Helena, MT 59601 (beavogel@mt.net) (7, spiders, arachnids)
 LM75 Wallace, Scott; 356 Lincoln Ave, Palo Alto, CA 94301 (scottgwallace@yahoo.com) (5)
 LM78 Walsh, Roberta; P.O. Box 332, Newport, NY 13416 (ro.walsh@verizon.net) (4)
 LM63 Wilkie, David B.; 5710 Redwood River Dr, Kingwood, TX 77345 (dbwkf@kingwoodcable.net) (2, 5)
 LM53 Willems, Pippa: "Argyle", Quondong Rd, Grenfell, NSW 2810 Australia (5)
 1683 Wilson, Peter; 1326 Phoebe Lane, Garland, TX 75042-8031 (6, 8)
 1296 Wongpakdee, Sobsan M.D.; Watthasoong, A. Muang, Uthaithani Province 61000 Thailand
 243 Wright, Donald P., Jr.; 84 Woosamonsa Road, Pennington, NJ 08534-3803 (aa2f@arrl.net) (insects)
 1769 Yagi, Betty H.; 6112 Old Log Trail, Kalamazoo, MI 49009 (2, microbiology, doves, cranes)
 (yyagi1@ameritech.net)

EDITOR BIOGRAPHIES (continued from page 145)

Fred Skvara

[Ed. Note: Dr. Frederick C. Skvara joined the Biology Unit in 1992. He was elected to the Unit Governing Board as a Director in 1998.]

Physician and philatelist Frederick C. Skvara of Bridgewater, New Jersey, was a member of the ATA Board of Directors from 2006 until his retirement this year. He was the ATA Director of Chapters, including author of the *Topical Time* "Chapter Chatter" column between 2006 and 2010. He has served since 2004 as editor of *Scalpel & Tongs*, the quarterly journal of the ATA Medical Subjects Unit, of which he is also the Secretary-Treasurer.

Since January 2010, he has been the editor of the *Americana Philatelic News*, the quarterly journal of the ATA Americana Unit. For several years, he also edited and published programs for the National Topical Stamp Show.

In 2012, he received American Topical Association's Distinguished Topical Philatelist award, the highest honor bestowed by the ATA.

In 2008, Dr. Skvara published an article in *Topical Time* based on his many years of experience in promoting the ATA at the American Stamp Dealers Association Spring and Fall Mega Event shows in New York City. This article became the genesis of the ATA Ambassadors program. Dr. Skvara's other contributions as an author include writing a column since 1998 titled "Philatelic Sketches in Medicine," for the newsletter of the Medical History Society of New Jersey, and as editor since 2008 of *The Westfield Philatelist*, published by the Westfield Stamp Club.

Dr. Skvara was born April 7, 1941, in Somerville, New Jersey. He married Margie Kelemen in 1968, and received his M.D. degree in 1970 from Jefferson Medical College in Philadelphia. After completing an internship, residency, and fellowship, he began to practice as an attending pathologist at the JFK Medical Center in Edison, New Jersey, and as associate professor of pathology at the Robert Wood Johnson Medical School in Piscataway. He retired from both positions in 2005, but continues to serve as the medical director of the Department of Medical Laboratory Technology at the Middlesex County College in Edison.

Fred Skvara has collected worldwide stamps since childhood. As he developed an interest in a wide variety of topics, he joined more than a dozen different ATA study units. His keen interest in the literature of philately led him to compile a fairly large personal library. He is an avid gardener and gives talks to garden clubs, some illustrated with stamp images. His interest in photography has evolved into a medical photomicrography business, with his images used in books, magazines and wall decor.