

# BIOPHILATELY

OFFICIAL JOURNAL OF THE BIOLOGY UNIT OF ATA

MARCH 2014

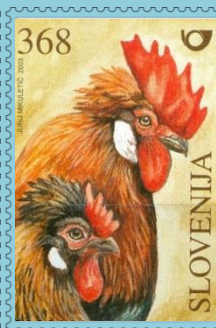
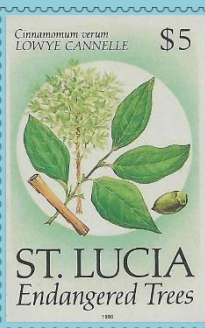
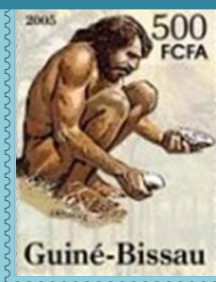
VOLUME 63, NUMBER 1

## Stamps: The Spice of Life



## Dawn Hamman Fresh Eggs

More Inside >>



## IN THIS ISSUE

From the Editor's Desk .....	1
President's Message .....	2
Secretary-Treasurer's Corner .....	3
Letters.....	3
News of Note.....	6
Glossary.....	64
Editors Biographies .....	65

## NEW ISSUES:

Botany – Christopher E. Dahle .....	10
Fungi – Paul A. Mistretta .....	21
Ornithology – Glenn G. Mertz.....	23
Ichthyology – Kris P. Lindstrom .....	41
Herpetology – Jack R. Congrove.....	45
Entomology – Donald Wright, Jr.....	50
Paleontology – Hans-Peter Schultze.....	59

## ARTICLES & ILLUSTRATIONS:

Stamp Stories – Jack Congrove .....	7
Herbs & Spices Part 2: Spices – Christopher E. Dahle .....	17
New Birds in the Philatelic Aviary – Charles E. Braun .....	36
Fresh Eggs – Dawn R. Hamman.....	39
Fire Salamander – Vic Eichler.....	48
Neanderthal Genes – Jack Congrove ...	61
Biology Reference Websites.....	62

**BIOPHILATELY****Editor**

Jack R. Congrove  
P.O. Box 33092, Fort Lewis, WA 98433, USA  
jackcongrove@comcast.net

**Publisher**

Richard Roman  
Dick.Roman@SbcGlobal.Net

**Associate Editors**

Christopher E. Dahle *Botany*  
1401 Linmar Dr. NE, Cedar Rapids, IA 52402  
chris-dahle@fastermac.net

Dr. Paul A. Mistretta *Fungi*  
4148 Commodore Dr., Atlanta, GA 30341  
paulmistretta70@gmail.com

Michael J. Prince *Mammalia*  
"Dorset," Grove Road, Ash Vale, Aldershot, Hants. U.K.  
Michael.Prince@bushinternet.com

Glenn G. Mertz *Ornithology*  
625 N. Lafayette St., Allentown, PA 18104  
ggmertz@juno.com

Charles E. Braun *New Birds*  
7 Winthrop Drive, Aiken, SC 29803  
ChuckBraun@aol.com

Kris P. Lindstrom *Ichthyology*  
P.O. Box 51008, Pacific Grove, CA 93950  
kplenviro2@sti.net

Ian Hunter *Invertebrate Zoology*  
77 Edgevalley Way N.W., Calgary, AB  
T3A 4X7, Canada  
ighunter@shaw.ca

Donald P. Wright, Jr. *Entomology*  
84 Woosamonsa Rd., Pennington, NJ 08534  
don.aa2f@verizon.net

Dr. Hans-Peter Schultze *Paleontology*  
2001 Vermont, Lawrence, KS 66046  
hp1937@ku.edu

**BIOLOGY UNIT OF ATA**

Alan J. Hanks **President**  
34 Seaton Drive, Aurora, ON Canada L4G 2K1

Laurence E. Davidson **Vice-President**  
P.O. Box 154, Tobermory, ON Canada N0H 2R0

Christopher E. Dahle **Secretary/Treasurer**  
1401 Linmar Dr. NE, Cedar Rapids, IA 52402

**Directors**

Jack R. Congrove (Washington)  
Lois C. Herrmann (New Mexico)  
Dr. Frederick C. Skvara (New Jersey)  
Donald P. Wright, Jr. (New Jersey)

**Publicity Director**

William Cochran  
9/30 William Street, Castlemaine, Victoria  
3450 Australia  
enquiries@philatelicdatabase.com

**Librarian**

Mark Reineke  
925 Boychuk Drive, Saskatoon, SK  
S7H 4L6 Canada  
mikadoate@sasktel.net

**Website**

[www.biophilately.org](http://www.biophilately.org)

The Biology Unit, founded in 1951, is a study unit of the American Topical Association dedicated to the international cooperative study of biological postage stamps and related material.

Back copies of *Biophilately* are available from the Librarian. Copies of separate articles are available at a charge six cents per page. Please contact the individual associate editors if you have queries about the content of their columns.

Send membership enquiries and change of address notices to the Secretary, Chris Dahle, (319) 364-4999. See the following page for dues rates.

The purpose of this journal is to provide members with informative articles dealing with biological topics and to publish listings covering the new **zoological** and **botanical** issues of the world, identified and classified to the best of our ability.

Please send letters, comments on the journal, articles, or new material to the Editor (data above). The Publisher will handle requests for issues from the current year. Contact the Librarian (address above) for copies of all other issues.

**NOTE:** Please provide a self-addressed envelope with the necessary return postage (or International Reply Coupons, if available) for all enquiries requiring an answer.

The term Scott and Scott Catalogue numbers are trademarks of Amos Philatelics, Inc., dba Scott Publishing Company.

**PLEASE NOTE: Material for the next issue should be in the hands of the Editor before 16 May 2014.**

### FROM THE EDITOR'S DESK

When I took over writing the editor's page, I set some guidelines for myself. And one of those guidelines was that I would try to avoid discussing the weather. So I am not going to write anything about the deep freeze most of us have been experiencing lately. This is the March issue of our journal and I can see Spring from here, so on to subjects of more interest and importance.

In this issue, Chris Dahle concludes his two-part feature on Herbs and Spices beginning on page 17. We also have articles from two of our newer members. First is one on raising chickens by Dawn Hamman, based on her new one-frame exhibit on that same topic. The second is about the fire salamander from Vic Eichler, who points out that amphibians have not received the emphasis they deserve when it comes to philatelic recognition. I also suspect that several people do not realize that salamanders are not reptiles, since many of them greatly resemble lizards. Turtles, which are reptiles, are often also confused with amphibians.

We have continued our Letters column and have received several comments regarding a new policy implemented by Linn's Stamp News to discontinue their "New Issues" column in their weekly editions. Please keep your letters and e-mails coming. This sort of exchange is one of the primary goals of our Unit.

This edition is missing our Mammalia and Marine Invertebrate columns. We expect to continue them in June.

The American Topical Association, our parent organization, will hold its annual National Topical Stamp Show 27–29 June 2014, at the Renaissance St. Louis Airport Hotel in St. Louis, Missouri. Please read the news item about the show on page 7. The Biology Unit will hold its annual membership meeting at the show on Saturday, 28 June at 10:00 A.M. I urge all of our members to attend, not only for a chance to meet everyone, but also because I am totally convinced all of you will enjoy the activities that the show has to offer. There are too many to list here, but in addition to dozens of dealers, you will find top notch exhibits on a great variety of topics, society meetings and presentations by philatelic experts, and social activities to satisfy almost every wish. Check out the ATA website (<http://www.americantopicalassn.org>) for more details.

Lois Herrmann, one of the Directors on our Unit Governing Board, has indicated her desire to step down from that position effective at the annual meeting this year, scheduled for the National Topical Stamp Show in June. As a result, we are seeking nominations to fill her Director position. Please contact President Hanks, Secretary Dahle, or me if you are interested in running for this office, or if you would like to nominate another member.

Congratulations to Chris Dahle, who has recently received his full certification as a philatelic judge by the Committee on Accreditation of National Exhibitions and Judges (CANEJ). This achievement is not easy to accomplish. Prospective judges must complete a series of four judging apprenticeships with an above average rating and attend several judging seminars sanctioned by CANEJ. In order to even qualify, the candidate must have prepared an exhibit that was awarded at least a vermeil medal at a World Series of Philately (WSP) show within the past two years.

Jack R. Congrove

#### DUES RATES (US\$)

Regular membership (US & Canada)	\$20
Overseas membership	\$25
Overseas airmail (add)	\$10
On-line membership	\$15

#### ADVERTISING RATES

Full page insertion	\$20
Half page insertion	\$10
Quarter page insertion	\$5

Please see the Biology Unit website ([www.biophilately.org](http://www.biophilately.org)) for membership applications. Several payment options are available. Send applications and payments payable to the Biology Unit of ATA to: Chris Dahle, 1401 Linmar Drive NE, Cedar Rapids, IA 52402

### PRESIDENT'S MESSAGE

This is the time of year when I wish that I had been one of the migratory birds that has the good sense to depart from our northern location and while away the winter in a warmer climate. We have been experiencing some really low temperatures over the past couple of weeks, with the mercury dropping to  $-21^{\circ}\text{C}$  ( $-3^{\circ}\text{F}$ ), almost to the point where you wonder if the car will start! In addition, we experienced an ice storm in and around Toronto that weighted down so many trees that large branches were breaking off and landing on the overhead power lines. This created power failures over much of our area and we were without power for three days! We tried to be tough and cope with it, but one night on our Swedish foam mattress, which had turned into a concrete like consistency had me on the phone to the nearest hotel and a room with HEAT! The citizens of Toronto had a really tough time, with power in some areas being out for quite a few days and elderly residents of high rise condo towers with no emergency power supply being in really poor shape.

One disturbing piece of news that appeared recently is that *Linn's Monthly Stamp Journal* will apparently be dropping the listing of new issues! I would imagine that this will make it more difficult for our group of editors to come up with listings for future issues of our journal. I checked with the Editor and he stated that there are other means for getting the required information, so it hopefully will not be as bad as it sounds.

The ATA is gearing up for the next annual show, which will be in St. Louis and will not involve another organization, as was the case in Rochester. I am looking forward to the show, as it is an interesting drive from here to St. Louis, one that my wife and I did many times when we were going to shows on the West Coast. I hope to see many Biology Unit members there at the annual meeting!

Until next time...

*Alan J. Hanks*

*[Ed. note. One comment on Alan's message to help avoid confusion: The monthly edition of Linn's Stamp News will continue to publish updates to the Scott Catalogue regarding new issues. It is the weekly editions that will drop the "New Issues" column. See more comments about this development in the Letters section.]*

Flora &  
Fauna



**New issues FDCs and Stamps**

**[www.fauna-stamps.com](http://www.fauna-stamps.com)**



**Philately Company s.r.o.**  
 Radouňova 2681/24, 155 00, Prague, Czech Republic  
 E-mail: [info@fauna-stamps.com](mailto:info@fauna-stamps.com) / Telefon: + (420) 773 133 955

## SECRETARY-TREASURER'S CORNER

### ANNUAL DUES

In the December edition of the journal, we placed a reminder for all members to send in their dues for the upcoming year. Thank you to all who have accomplished that. However, the Secretary has had to send reminders to a few who have yet to respond.

This is the first time the Secretary has sent out an e-mail reminder. Previously, we have handled this via the postal system. This method did reveal that we do not have current e-mail addresses (and in some cases current mailing addresses) for some members because some reminders were returned as undeliverable.

As a result, we ask that all members with access to e-mail send a short message to the Secretary to update your e-mail and postal mailing addresses. His e-mail address is: *chris-dahle@fastermac.net*.

---

### NEW MEMBERS

The Biology Unit welcomes the following new members:

1850	Vic Eichler, Three Rivers, MI	amphibians and reptiles (4)
1851	Pieter Strydom, Littleton, CO	flowers (2)
1852	Earle Hicks, Port Charlotte, FL	many topics
1853	Ben Burch, Berkeley, CA	paleontology, fauna (0, 3)

### LETTERS

A thank you note from a former ATA President regarding the Biology Unit History publication.

“You ruined my day! I had all sorts of things planned, but your Biology History arrived and I became totally engrossed in it. What a fascinating study. I don't know how you did it. Even though I am not a member of the BU, I knew (know) so many of the people involved, and had a great time reading about them. It is not often that such an in-depth study is done on a group—and it is important that this type of history is preserved. Too often, as you well know, info gets totally lost. A remarkable study and I thank you for including me in your mailing.” —Donald W. Smith (ATA Past President)

More feedback on the *Biophilately* Index/Unit History publication.

“Please accept my congratulations on your marvelous history of the Biology Unit, which I read tonight after receiving *The Mother of All Indexes* in the mail today. I am inspired to attempt a bird-stamp-related article sometime in 2014! I am thinking about an article on the 27 species that are monotypic (only representative of their family) using the Clements/Cornell taxonomy.” —Peter R. Bono

*[I am eager to receive such an article for publication. I think many members would find it interesting, including those who do not collect the bird topic. I encourage all of our members to submit even just a couple of paragraphs on a topic that interests them —Ed.]*

“Thx for the *Biophilately* index. What an incredible resource – and what a huge amount of time, energy and patience to prepare it!” —Jack Andre Denys (ATA President)

Member suggestions.

“I didn't find [a renewal] form when I went to the website. The home page of the website has a main button called ‘Membership.’ Under that is one button which says ‘Application.’ In addition to having the renewal form with the current issue—which is accessible only if you login in with your membership credentials, I suggest adding a second link under ‘Membership.’ This link would say ‘Renewal’ and would cause the downloading of the Renewal form PDF.

“I note that the "Renewal" form doesn't contain the word 'Renewal' on it. Instead it is called a DUES NOTICE. Most people think about renewing their membership not being notified that dues are now due.

“[The form] doesn't contain a field where you can indicate what CALENDAR YEAR you are renewing for. For example, if you receive one of these in Sept 2013, you might not know if it was intended to prepay 2014 or to catch up and pay for 2013....” —Peter R. Bono

*[Our webmaster has incorporated these suggestions. In the past, the lack of a distinctive form for renewal has sometimes caused us to mistakenly assign a new membership number to an existing member. —Ed.]*

Member request to our Secretary.

“Chris, I received the package you sent to me and in reading over the materials am truly impressed with the completeness and passion that the members of the Biology Unit of ATA have provided to the Society. I had no idea that such an effort was underway in this world, but am truly grateful for the work of so many people over the past 62 years!

“The index to all 62 volumes is most impressive, and certainly useful for newcomers such as myself, and in reading over the history of the Biology Unit by Jack Congrove I can more completely understand the professionalism involved in directing the Unit to the present time.

“Now a question: How is it possible for me to access the articles indicated in the index to the 62 issues? As I am updating the checklist of amphibians for the Society, I particularly desire to be able to review articles that have been published in Section 2: Zoology/Amphibians (listed on page 81) and Herpetology (listed on page 91) of the complete index.

“I have checked with our local library for Scott catalogs and found out that they have only one catalog from 2010. I have need to find out the Scott (or other) numbers for several hundred amphibian stamps dating back several decades and obtaining the articles from earlier copies of Biophilately Journal seems like a wise way to go if that is possible. Are they possibly accessible online? I look forward to your comments regarding how this can be achieved.

“My interest in collecting stamps probably began when I was ten years old, which would have been exactly the same year as the first issue of *Biophilately Journal* was published. I can only imagine how much richer my experience would have been if I learned of the ATA way back then! But, on the other hand, with my professional career behind me, maybe I had to wait until the present time to delve into the topical collecting with the time and focus that I'm doing now.

“Sending best wishes, with thanks for all you sent.” —Vic Eichler

Response from Chris Dahle: *Our Unit librarian, Mark Reineke (mikadoate@sasktel.net) may have access to the articles you are interested in. I am also copying to Jack Congrove because he located a complete set of the journals while compiling the index. I don't know if any one library has a complete collection of the journals. My collection goes back to 1983, and I would be glad to send you electronic copies of any articles. The Postal History Foundation's (PHF) Peggy Slusser Museum in Arizona has issues of Biophilately from 1960 to present as well as Biology and Biological Tid-Bits starting in 1951. The American Philatelic Research Library (APRL) in Bellefonte, Pennsylvania (part of the American Philatelic Society) has an online catalog that shows holdings in 10 philatelic libraries and has copies of the journal from 1951-1986. The APRL will charge for lending or photocopying. I don't know what the lending opportunities are for the PHF library.*

*The 2010 Scott Catalogue in your library should list all stamps from the first issues of each country through issues of 2009, so you should be able to find many of the Scott numbers using that reference. You should also ask the ATA for a copy of Handbook 91, Fishes, Amphibia and Reptiles on Stamps of the World published in 1977. That should have a list of amphibians to that date. That should also give you a starting point for the update. Don't hesitate to ask if you have more questions. We'll do our best to get answers.*

*[We are in the process of scanning all back issues of the Unit journal into electronic format to provide access to all the articles and checklists in past editions. At almost 14,000 pages, this process will take us a little time, especially since most of the scans we currently have are not searchable and we want to do them over to enable search capability. —Ed.]*

A portion of an open letter to the Editor of *Linn's Stamp News* from one of our Associate Editors regarding a change in their policy that will affect many of us who are interested in finding out about new issues in our topics.

“I’d like to make a few comments regarding the disappearance of this [New Issues listing]. As you know, I write for a Journal, *Biophilately*, a part of the ATA. From this New Issues section, I was able to get advance listing of what countries were issuing what stamps and the listing of what each issue consisted of, which alerted me to issues having birds as part of the issue. There are other writers that author other sections of this journal, which is published quarterly to collectors who subscribe to *Biophilately*. We have authors for Botany, Fungi, Mammalia, Ornithology, which I author, Ichthyology, Invertebrates, Herpetology, Entomology and Paleontology. They all rely on the New Issues to get advance notification of upcoming issues to inform members who collect any of these items.

“Not knowing what upcoming issues are being released by all the postal administration countries in the world, will cause many collectors to be unaware of when these countries will be issuing items that they collect. Collectors are a very peculiar lot and like completeness to what they collect....

“In addition, Scott Catalog is not going to take care of the reasons I’ve listed above, because Scott does not list every release each month. Some country listings don’t get listed for over a year. Some countries Scott has problems even knowing what is being issued and when to even get listed in their catalog. I can probably name at least eight to ten countries that have not been updated for more then (sic) three or more years.

“This decision to drop the New Issues section and to rely on *Scott Stamp Catalog* to be the one to herald what new issues are out there is a very big step backwards to the stamp collecting community and the collectors. I’m sure that there are dealers who also rely on the New Issues section to know what to order for their customers collecting interest from these countries. Many dealers do not have an automatic agreement contract with these countries to forward them new material. They rely on the New Issues section in *Linn's Stamp News* and then make their determination of what material to purchase. They know what interests the majority of their collectors they deal with, but without knowing what is being issued will only hurt their sales to their collectors because they were not aware of the material available.

“It would appear the *Linn's Stamp News* does not know as much about the stamp collecting community and it's collectors as they think they do. This decision was very poorly thought out.” —Glenn G. Mertz

More on this same subject from the editor of another ATA study unit journal.

“Dear Linn’s, Using the excuse (*Linn's*, 3 February 2014, p. 50) that ‘preparing these [New Issues] listings takes up an enormous amount of time’ (I’m sure it does; so what? That’s your job, and it’s time well spent!), and that ‘the New Issues listings, for all intents and purposes, were duplicating a great deal of the content in the New Issues Update’ (not true), are pretty lame excuses for eliminating the New Issues feature altogether! My primary ‘intent and purpose’ in faithfully checking the weekly New Issues listings is to learn who designed the stamps, how they were printed, what entities printed them, and how many stamps were included in the press run—where can I find that information in the monthly New Issues Update? Answer: I can’t. You have eliminated one of the primary reasons that I even bother to subscribe to Linn’s. Bad move, people, bad move!” —Bruce L. Johnson, Editor *Philateli-Graphics*, Graphics Philately Association

*[Like most business decisions, I am sure there were cogent arguments on both sides. Perhaps the editors misapprehended the interest in this column among the community. Its loss will make it more difficult to find out about new issues and their related details for our journal. Fortunately we have been gathering and publishing details in Biophilately about the many websites (see page 62) that provide this information, so there are still resources available to help our readers and associate editors. —Ed.]*

## NEWS OF NOTE

### NTSS 2014



The American Topical Association (our parent organization) will present its 65th Annual National Topical Stamp Show 27–29 June 2014, at the Renaissance St. Louis Airport Hotel in St. Louis, Missouri.

This is one of the largest, if not the largest, thematic stamp shows in the world. The show will include a bourse with a multitude of dealers from many parts of the US. It is also one of the American Philatelic Society's "World Series of Philately" shows featuring thousands of pages of philatelic exhibits. The winner of the Grand Award will compete with the Grand Award winners of 30 other WSP shows for the "Champion of Champions" award at the APS StampShow in Hartford, Connecticut, 21–24 August 2014.

The event schedule is not yet confirmed, but the ATA always sponsors tours of notable local sites both before and after the show as well as many society meetings, educational presentations, and other ceremonies.

The Biology Unit will hold its annual membership meeting at the show on Saturday, 28 June at 10:00 AM. The Unit officers join me in extending an invitation to every member and any others who are interested in biological philately to attend the annual meeting and the show. I personally would like to meet each of you and I guarantee that you will find something to interest you and enjoy at this show.

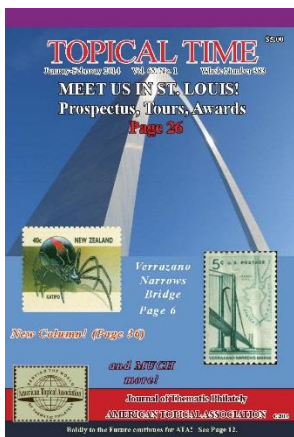
See details and registration forms at <http://americantopicalassn.org/ntss/ntss2014.shtml>.

### BIOPHILATELY WINS AWARD



Our *Biophilately* journal received a Silver-Bronze award in the philatelic literature exhibition at CHICAGOPEX held at the Westin Chicago Northwest Hotel in Itasca, Illinois, 22–24 November 2013. This award was based on issues from Volumes 61 and 62. One suggested area for improvement is to include more articles. Thus, I am asking each of the Biology Unit members to send me an article about some biological or philatelic subject that interests you.

### TOPICAL TIME ELECTRONIC EDITION



Beginning with the January-February 2014 edition, *Topical Time*, the journal of the American Topical Association, published its first on-line electronic version. The electronic version is available to all current ATA members via the ATA website at [www.americantopicalassn.org](http://www.americantopicalassn.org). A password is required to access the publication.

The on-line interface uses FlippingBook software that is intuitive and very easy to use. You can navigate to any desired page in several different ways. The image quality is superb. The application enables you to zoom in to each page. You can select and copy text, or download and save entire pages as Portable Document Format (PDF) files.

This issue has two articles featuring members of the Biology Unit. A new column written by our own Dawn Hamman (BU1831) titled "My Topic," features vignettes spotlighting the interests of some fellow ATA members. The first of this series features Bea Vogel (BU1809) whose topical specialty is spiders on stamps.

The second article is the third in a series of brief biographies of members of the ATA Board of Directors. This edition features our own Unit Vice President, Larry Davidson (BU1768). Larry serves as the NTSS Awards Chair for the ATA and also writes a regular column on "Foreign Thematic Exhibits" for *Topical Time*.



## STAMP STORIES

**Jack R. Congrove, BU1424**

As some of you may know, I was raised on a small dairy farm in central Ohio. Not long ago while at my day job, I was discussing a frustrating business matter with some colleagues when I mentioned that the circumstances did not pass the “Ohio Farm Boy Common Sense Test.” I have found that usually when this is the case, something is haywire. Someone asked me what I meant by this test, so I told them a couple simple examples.

As I thought more about this, I decided it might make an interesting subject for a Stamp Story. After all, farming and agriculture have traditionally been topics we have included in *Biophilately*. So, I decided to present a few examples in this article. I should also point out that this common sense applies equally well to Ohio Farm Girls.

Living and working on a farm or ranch requires a pragmatic outlook and lots of flexibility. Agriculture and animal husbandry, especially at the family farm level, is precarious, being reliant on the vagaries of the weather, disease, market forces, and other factors mainly outside the control of the individual farmer. Over the years, I have discovered that most of the lessons I learned while growing up on the farm have held true. And, if you really think about them, they provide principles that can guide you in many other areas of life. Here are some of those lessons and I hope they may help you as they have helped me.

- **Farming does not stop just because it is raining, or snowing, or hailing. However, tornados are another matter.**

Life is full of obstacles. It reminds me of Gilda Radner’s autobiography, *It’s Always Something*. Most of the time, we only need to put on our rain jacket and rubber boots and get on with our chores. But sometimes the situation is serious enough we need to head to the root cellar. We must be able to recognize the difference and take appropriate action.

On 4 October 2004, the U.S. issued a miniature sheet of 15 stamps (Sc#3878) depicting various cloud formations to commemorate National Stamp Collecting Month. The stamp in the lower right-hand corner shows a cumulonimbus cloud with a tornado funnel. Nimbus is a modifier for cloud types that indicates precipitation. The image is from a photograph by Edi Ann Otto of Osnabrock, North Dakota. The designs also appeared on 23c postal cards.



Tornado over farmland  
U.S. Sc#3878o

The US Postal Service allied with The Weather Channel, the American Meteorological Society, and the National Weather Service to use this issue as part of an educational outreach. The designer was Howard Paine. The stamps were printed on self-adhesive paper by Avery Dennison using the gravure process and die cut 11.

Tornadoes vary in intensity regardless of shape or size. One method of measurement uses the Fujita scale that assigns categories based on wind speeds from F0 (40–72 mph) to F5 (261–318 mph). Each year in the U.S., tornados cause human and livestock deaths and damages to crops and structures totaling in the billions of dollars.



Tractor plowing a field  
Afghanistan Sc#1388

- **It takes a mighty powerful tractor to pull a six-bottom plow.**

If you want to build a database (or a health care website) that deals with hundreds of millions of entries and terabytes of data, Microsoft Office is not going to work for you. You need to employ some more serious horsepower.

Traveling back and forth from one end of a field to the other, I have driven a plow-pulling tractor many miles. I found it a pleasant, fairly mindless exercise that allowed me to enjoy the fresh air and cogitate on the events of life (in other words daydream). We always used our most powerful tractor and put it in low gear with the throttle open in order to overcome the drag of the plow with its multiple plowshares as it tried to anchor the tractor to the earth.

On 21 March 2003, Afghanistan issued a set of two stamps to commemorate Farmer’s Day. The 6af stamp (Sc#1389) shows a team of two oxen pulling one plowshare and the 3af stamp shows a rather crude drawing of a tractor performing the same operation pulling what appears to be a four-bottom plow. These stamps were printed by lithography in sheets of 36 and perforated 12½×13.

- **If you are going to cut down a locust tree, you had better bring a pretty sharp saw.**

Some things are tougher than they look. You can try to tackle these things with brute force, but you will undoubtedly work up a lot of sweat and expend a lot of time and energy unless you use the right tool in an effective manner.

The Black Locust tree (*Robinia pseudoacacia*) is native to the eastern United States, especially the Appalachian region. It can grow to a height of seventy feet and diameter of up to four feet, but trees of this size are unusual. The flowers are a major contributor to honey production, and the wood is very useful in farming. It is extremely hard, resistant to rot, and durable. This makes it prized for furniture, flooring, paneling, fence posts, and small watercraft. In fact, it is one of the heaviest and hardest woods in North America. The rails and fence posts that Abraham Lincoln spent his youth splitting were locust wood.

On our farm, we used locust poles for fence posts and I can personally attest to its toughness, having dulled many axes and broken much sweat working with it.

On 14 January 2012, Ukraine issued a set of four stamps (Sc#854–57) depicting trees. The lowest denomination in this set shows the seed pods and leaves of a black locust. The stamps were printed by Ukraine Integrated Printing Plant in sheets of 90 using the offset method. They measure 22×26mm and are perforated 13¾. The artist for this issue was Volodymyr Taran. The billet under coat of arms luminesces under UV-light and the stamps also include micro printing of the year of issue and the scientific name of the plant.



Locust leaves & seeds  
Ukraine Sc#854

- **Do not try to harvest wheat with a hay baler. The best you will end up with is a bale of wheat.**

My father, who was a professional mechanic in addition to being a farmer, used to say, “Use the proper tool for the proper job.” Sometimes we take shortcuts to try to “save time.” Although I spent a lot of time in the Army forced by combat or emergency and lack of the proper item to use what are known as “field expedients,” I have typically found that shortcuts result in wasting time. Often they are even unsafe and ultimately, because they do not adequately fix the problem, require us to do the job over again the right way.

Wheat and other grains were originally reaped (cut and gathered) by hand. Although the Romans had some simple mechanical reapers, Obed Hussey and Cyrus McCormick created the first modern reapers in the 1830s. These evolved into reaper-binders that bound the grain stalks into sheaves. Workers then fed these sheaves into a threshing machine that separated the grain kernels from the stalks. Eventually the reaper and the thresher were “combined” into the modern combine that performs the harvesting and threshing in one operation.

On 6 January 1929, Royal Mail Canada issued a definitive stamp depicting farmers harvesting wheat with a horse- or mule-drawn reaper-binder. One farmer, mounted on the machine, is driving the team while the other farmer at left and behind is collecting the sheaves. One sheaf lies on the ground apparently having just been produced by the reaper. A stack of sheaves stands in the foreground presumably waiting to be hauled to the thresher. It is difficult to see, but there also is a railroad train short of the mountains in the distant background.

This stamp was part of the 1928 definitive series that was the first to contain bilingual inscriptions. The lower values (Sc#150–54) bore a portrait of King George V in uniform, taken from a photograph by Lafayette of London. The higher values (Sc#155–59) depicted scenes from the various Canadian regions.

The stamp was printed by the Canadian Banknote Company using the intaglio process and perforated 12. Because Canada changed printers in 1929, this issue had a relative short life and covers (including FDC) are scarce.



Harvesting wheat with a reaper  
Canada Sc#157

- **It does not matter if you raised her from a calf. If it costs \$10 per day to feed and care for Elsie, but she only produces \$9 worth of milk, she is heading to the auction house.**

I expect I may receive some critical comments from pet owners regarding this observation, but nevertheless it applies to almost all business dealings and many other aspects of life. If you can afford to keep Elsie for sentimental reasons, that is fine. However, sometimes we hold on to a cherished object or idea in contradiction to sound economics and in spite of all logic and reason.

Based on my observations, it appears that much of the intelligence has been bred out of most domestic animals. Some may no longer be able to thrive without human assistance. I think dairy cows fall somewhere in the middle of the domestic animal intelligence spectrum, but that is not saying much.

Domestic cattle are members of the Bovidae family and are currently classified in one species, *Bos primigenius taurus*. Cattle have been domesticated for at least 10,500 years and there are about 1.3 billion of them on Earth today. On our farm, we used the Jersey breed exclusively and sold our milk to a dairy that specialized in “All-Jersey” milk. The Jersey is one of the smallest dairy breeds and originates from the Isle of Jersey in the English Channel. They do not produce the volume of milk that other breeds do, but they make up for that by producing milk with the highest butterfat content of all breeds. Our herd averaged well over 5 percent butterfat by volume.

On 20 March 2012, Australia Post issued a set of five stamps (Sc#3670–74) to commemorate farming. The lowest value shows the head of a Jersey cow with other cows on a farm in the background. The other stamps in the set show a pineapple field (20c), vineyard (\$1), field of sunflowers (\$3), and an apple orchard (\$5). The designer and illustrator was Jo Mure. The stamps were printed by McKellar Renown using lithography. The two lower values measure 30×25mm and are perforated 14×14.4. The higher values measure 50×30mm and are perforated 14.6×14.



Jersey cow  
Australia Sc#3670

- **When you tinker with moving machinery, be prepared to lose some appendages.**

As Roy Hobbs said in *The Natural*, “There are some mistakes you just never stop paying for.” Placing your hand in a running machine is one of these. Farm machinery can cause serious injuries even when it is just sitting there. It is especially dangerous when it is in motion. Most farm machinery is designed to perform operations that are inherently hazardous such as cutting, crushing, compacting, and shredding. The human body does not tolerate any of these actions very well.

Our neighbor on the farm next to ours wore a prosthetic right arm. He lost his arm in an accident involving a corn picker when he was young. This disability hardly slowed him down. He worked in his fields and with his livestock all the time that I knew him. He could drive tractors, load hay, and was one of the toughest men I ever knew. Along the way, he raised a family of ten children.

On 5 April 2004, New Zealand Post issued a set of five stamps (Sc#1930–34) showing historic farm equipment. The second highest denomination shows a threshing machine. As mentioned earlier, this machine separated the grain from the stalks. The designer was Ross Jones. The stamps were printed in sheets of 50 by Southern Colour Print using lithography. The stamps measure 40×30mm and are perforated 14. New Zealand Post also produced a prestige booklet containing six miniature sheets incorporating all the stamps from this issue.



Threshing Mill  
New Zealand Sc#1933

*[Ed. note. While researching this article, I noticed to my surprise that there are many stamp issues depicting tractors and other types of farm implements. I am eager to receive, and would be greatly interested in reading and publishing, an article about these issues from one of our readers. Please contact me if you can submit one.]*



# BOTANY

Editor

Christopher E. Dahle, BU1269



## New Listings

Scott#	Denom	Common Name/Scientific Name	Family/Subfamily	Code
<b>ALGERIA</b>		<b>2012 December 11 (Medicinal Plants)</b>		
1571	15d	<i>Globularia vulgaris</i>	Plantaginaceae	Fl A
1572	20d	Liquorice, <i>Glycyrrhiza glabra</i>	Fabaceae	Fl A
1573	30d	Bog-bean, <i>Menyanthes trifoliata</i>	Menyanthaceae	Fl A
		<b>2013 March 13 (Fruit and Blossoms)</b>		
1581	15d	Apricots, <i>Prunus armeniaca</i>	Rosaceae	Fl Fr A
1582	20d	Cherries, <i>Prunus avium</i>	Rosaceae	Fl Fr A
<b>ANDORRA (French Admin)</b>		<b>2013 September 7 (Flora Type of 2011)</b>		
720	58c	Field Poppy, <i>Papaver rhoeas</i>	Papaveraceae	Fl A
721	€1.05	Peony, <i>Paeonia mascula</i>	Paeoniaceae	Fl A
<b>ARGENTINA</b>		<b>2013 March 23 (Festivals)</b>		
2676	3.50p	Lemon Festival, <i>Citrus limon</i>	Rutaceae	Fr A S
<b>ARMENIA</b>		<b>2013 June 18 (Brandy Production)</b>		
939	300d	Grapes, <i>Vitis vinifera</i>	Vitaceae	Fr B
<b>ARUBA</b>		<b>2013 September 5 (Flowers)</b>		
430a	200c	Passiflora, <i>Passiflora quadrangularis</i>	Passifloraceae	Fl A MS
430b	200c	Canna, <i>Canna indica</i>	Cannaceae	Fl A MS
430c	200c	Bougainvillea, <i>Bougainvillea spectabilis</i>	Nyctaginaceae	Fl A MS
430d	200c	Amaryllis, <i>Hippeastrum x hybridum</i>	Amaryllidaceae	Fl A MS
430e	200c	Hibiscus, <i>Hibiscus rosa-sinensis</i>	Malvaceae	Fl A MS
430f	200c	Ipomoea, <i>Ipomoea sp.</i>	Convolvulaceae	Fl A MS
430g	200c	Strelitzia, Bird-of-Paradise, <i>Strelitzia reginae</i>	Strelitziaceae	Fl A MS
430h	200c	Lily, <i>Lilium sp.</i>	Liliaceae	Fl A MS
430i	200c	Allamanda, <i>Allamanda cathartica</i>	Apocynaceae	Fl A MS
430j	200c	Lantana, <i>Lantana camara</i>	Verbenaceae	Fl A MS
<b>AUSTRALIA</b>		<b>2013 August 13 (Carnivorous Plants)</b>		
3966	60c	<i>Cephalotus follicularis</i> (perf 14¾×14)	Cephalotaceae	V A
3967	60c	<i>Drosera rupicola</i>	Droseraceae	V A
3968	60c	<i>Drosera lowriei</i>	Droseraceae	V A
3970	60c	<i>Nepenthes rowanae</i>	Nepenthaceae	V A
3971	60c	<i>Cephalotus follicularis</i> (die cut 11¼)	Cephalotaceae	V A
3972	60c	<i>Drosera rupicola</i>	Droseraceae	V A
3973	60c	<i>Drosera lowriei</i>	Droseraceae	V A
3974	60c	<i>Nepenthes rowanae</i>	Nepenthaceae	V A

**BANGALDESH****2013 June 5**

813 10t National Tree Planting Campaign T U B

**2013 July 30** (Flowering Trees)

816a 10t Sensitive Plant, *Mimosa pudica* Fabaceae FI A  
 816b 10t Ceylon Ironwood, *Mesua ferrea* (= *nagassarium*) Calophyllaceae FI A  
 816c 10t Elephant Apple, *Dillenia indica* Dilleniaceae FI A  
 816d 10t Scarlet Wrightia, *Wrightia coccinea* Apocynaceae FI A

**BELGIUM****2013 June 24** (Royal Meteorological Institute Centenary)

Leaves on trees printed in thermochromic ink and change colors when stamp is warmed.

2655b €1.03 Tree in spring T A U MS  
 2655c €1.03 Tree in summer T A U MS  
 2655d €1.03 Tree in autumn T A U MS  
 2655e €1.03 Tree in winter T A U MS

**2013 September 13**2658 1 (67c) Calla Lily, *Zantedeschia aethiopica* Araceae FI A**BOSNIA & HERZEGOVINA (Croat Admin.)** **2013 May 22** (Myths and Flora)287 2m Turkey Oak, *Quercus cerris* Fagaceae T A SS Z**2012 September 12** (Tuberculosis Tax)RA31 20pf *Gazania* sp. Asteraceae FI A**BRAZIL****2011 October 3** (Trees of Brazil - Natural Treasures)

3189a (1.10r) Tree with small branches, few leaves, text: "As arvores..." T A S  
 3189b (1.10r) Larger tree, text: "...copas abertas..." T A S  
 3189c (1.10r) Larger tree, text: "...devolvendo a VIDA..." T A S  
 3189d (1.10r) Large tree, text within tree T A S  
 3190 2.70r Stamps without white frames T A S MS

**BULGARIA****2013 October 26** (Orchids)

4654a 65s *Cymbidium iridioides* Orchidaceae FI A MS  
 4654b 65s *Dendrobium fimbriatum* (= *var. oculatum*) Orchidaceae FI A MS  
 4654c 1L *Epidendrum radicans* Orchidaceae FI A MS  
 4654d 1L *Dendrobium nobile* Orchidaceae FI A MS

**2013 October 27**

4655 1L U/I tree T A U MS

**BURUNDI****2012 October 15** (Burundi Coffee Production)

1170a 1180fr Hands holding coffee cherries, *Coffea arabica* Rubiaceae V Fr B  
 1170b 1190fr Bags of coffee beans, *Coffea arabica* Rubiaceae V Fr B  
 1170d 3000fr Hands holding coffee cherries, *Coffea arabica* Rubiaceae V Fr B  
 1189 7500fr Woman, coffee bush, and beans, *Coffea arabica* Rubiaceae V Fr B

**2012 December 28** (Succulents and Animals)

1212a 1180fr *Euphorbia trigona* Euphorbiaceae V B  
 1212b 1190fr *Opuntia ficus-indica* Cactaceae V B  
 1212c 3000fr *Euphorbia tortilis* Euphorbiaceae V B  
 1212d 3000fr *Euphorbia trigona* *var. rubra* Euphorbiaceae V B  
 1237 7500fr *Opuntia robusta* Cactaceae

<b>BURUNDI</b> (continued)		<b>2013 July 15</b> (Paintings by Sérusier)	
1306b	1190fr	<i>The Flowered Barrier</i>	Fl A U
1306c	3000fr	<i>The Garland of Roses, Rosa</i> sp.	Rosaceae Fl A
		<b>2013 July 15</b> (Paintings by Gauguin)	
1310c	3000fr	<i>Picking Lemons, Citrus limon</i>	Rutaceae Fr B
		<b>2013 July 15</b> (Paintings by Van Gogh)	
1311b	1190fr	<i>Picking Olives, Olea europaea</i>	Oleaceae T Fr B
1311c	3000fr	<i>Avenue of Poplars in Autumn, Populus</i> sp.	Sapindaceae T B
		<b>2013 July 15</b> (Paintings by Felix Vallotton)	
1313c	3000fr	<i>Still Life with Flowers</i>	Fl A U
1313d	3000fr	<i>Still Life with Marigolds and Tangerines</i> Marigold, <i>Tagetes</i> sp. Tangerine, <i>Citrus reticulata</i>	Asteraceae Rutaceae Fl A Fr A
		<b>2013 August 20</b> (Wild Dogs and Cacti)	
1382a	90fr	<i>Maihueiopsis (=Opuntia) ovata</i>	Cactaceae V B
1382b	1190fr	<i>Ferocactus echidne</i>	Cactaceae V B
1382c	3000fr	<i>Ferocactus pilosus</i>	Cactaceae V B
1382d	3000fr	<i>Cylindropuntia fulgida</i>	Cactaceae V B
1423	7500fr	<i>Hydrangea macrophylla</i>	Hydrangeaceae Fl B
<b>CAMBODIA</b>		<b>2010 May 25</b> (Environmental Protection)	
2588	6000r	Cars in flood, Palm trees	Arecaceae T B U
<b>CHILE</b>		<b>2012 December 5</b> (50yrs Diplomatic relations - Chile & Thailand)	
1588	500p	Chilean Bellflower, <i>Lapageria rosea</i> Golden Shower, <i>Cassia fistula</i>	Philesiaceae Fabaceae Fl B Fl B
<b>CHINA P.R.</b>		<b>2013 May 11</b> (Mother's Day)	
4098	\$1.20	Carnation, <i>Dianthus caryophyllus</i>	Caryophyllaceae Fl A
		<b>2013 August 8</b>	
4131	\$3	Ptg: Bamboo	Poaceae V A U
		<b>2013 August 15</b> (China-ASEAN EXPO 10th Anniv)	
4133	\$1.20	Bouquet of flowers	Fl A U
<b>CHINA (Taiwan)</b>		<b>2013 June 11</b> (Herbs)	
4118	\$5	Peppermint, <i>Mentha x piperita</i>	Lamiaceae Fl A
4119	\$5	Rosemary, <i>Rosmarinus officinalis</i>	Lamiaceae Fl A
4120	\$12	Pineapple Sage, <i>Salvia elegans</i>	Lamiaceae Fl A
4121	\$15	Mugwort, <i>Artemisia indica</i>	Asteraceae Fl A
<b>CHRISTMAS ISLAND</b>		<b>2013 June 18</b> (Flowering Shrubs Type of 2013) (die cut 11¼)	
518	60c	<i>Colubrina pedunculata</i>	Rhamnaceae Fl A
519	60c	<i>Abutilon listeri</i>	Malvaceae Fl A
<b>COLOMBIA</b>		<b>2013 April 29</b> (Renaming Natl. Park for Gloria Valencia de Castaño)	
1392	1800p	U/I mountain plants	V B U
<b>COOK ISLANDS</b>		<b>2013 February 6</b> (Coronation of Queen Elizabeth 60th anniv)	
1427	\$1.20	Packet of Sweet Pea seeds, <i>Lathyrus odoratus</i>	Fabaceae Fl A

<b>COOK ISLANDS</b> (continued)		<b>2013 April 9</b> (Sc#1328, 1330–37 surch in gold)	
1437	20c on 10c	Madagascar Periwinkle, <i>Catharanthus roseus</i>	Apocynaceae FI A
1438	20c on 30c	Hibiscus, <i>Hibiscus rosa-sinensis</i>	Malvaceae FI A
1439	20c on 50c	Japanese Lantern, <i>Hibiscus schizopetalus</i>	Malvaceae FI A
1440	20c on 80c	Bougainvillea, <i>Bougainvillea spectabilis</i>	Nyctaginaceae FI A
1441	20c on 90c	Chinese Hibiscus, <i>Hibiscus rosa-sinensis</i>	Malvaceae FI A
1442	20c on \$1	Water Lily, <i>Nymphaea capensis</i>	Nymphaeaceae FI A
1443	20c on \$1.10	Poinsettia, <i>Euphorbia pulcherrima</i>	Euphorbiaceae FI A
1444	20c on \$1.20	Impatiens, <i>Impatiens walleriana</i>	Balsaminaceae FI A
1445	20c on \$2	Anthurium, <i>Anthurium andraeanum</i>	Araceae FI A

**2010 October 12** (Sc#1305–19 ovpt in Metallic Green like O70)

O88	10c	Madagascar Periwinkle, <i>Catharanthus roseus</i>	Apocynaceae FI A
O89	20c	Ixora, <i>Ixora casei</i>	Rubiaceae FI A
O90	30c	Hibiscus, <i>Hibiscus rosa-sinensis</i>	Malvaceae FI A
O91	40c	Heliconia, <i>Heliconia psittacorum</i>	Heliconiaceae FI A
O92	50c	Japanese Lantern, <i>Hibiscus schizopetalus</i>	Malvaceae FI A
O93	70c	Red Ginger, <i>Alpinia purpurata</i>	Zingiberaceae FI A
O94	80c	Bougainvillea, <i>Bougainvillea spectabilis</i>	Nyctaginaceae FI A
O95	90c	Chinese Hibiscus, <i>Hibiscus rosa-sinensis</i>	Malvaceae FI A
O96	\$1	Water Lily, <i>Nymphaea capensis</i>	Nymphaeaceae FI A
O97	\$1.10	Poinsettia, <i>Euphorbia pulcherrima</i>	Euphorbiaceae FI A
O98	\$1.20	Impatiens, <i>Impatiens walleriana</i>	Balsaminaceae FI A
O99	\$2	Anthurium, <i>Anthurium andraeanum</i>	Araceae FI A
O100	\$3	Chrysanthemum, <i>Chrysanthemum cultivar</i>	Asteraceae FI A
O101	\$4	<i>Acalypha pendula</i>	Euphorbiaceae FI A
O102	\$5	<i>Heliconia rostrata</i>	Heliconiaceae FI A

**2010 October 12** (Sc#1305–19 ovpt in Metallic Red like O70)

O103	10c	Madagascar Periwinkle, <i>Catharanthus roseus</i>	Apocynaceae FI A
O104	20c	Ixora, <i>Ixora casei</i>	Rubiaceae FI A
O105	30c	Hibiscus, <i>Hibiscus rosa-sinensis</i>	Malvaceae FI A
O106	40c	Heliconia, <i>Heliconia psittacorum</i>	Heliconiaceae FI A
O107	50c	Japanese Lantern, <i>Hibiscus schizopetalus</i>	Malvaceae FI A
O108	70c	Red Ginger, <i>Alpinia purpurata</i>	Zingiberaceae FI A
O109	80c	Bougainvillea, <i>Bougainvillea spectabilis</i>	Nyctaginaceae FI A
O110	90c	Chinese Hibiscus, <i>Hibiscus rosa-sinensis</i>	Malvaceae FI A
O111	\$1	Water Lily, <i>Nymphaea capensis</i>	Nymphaeaceae FI A
O112	\$1.10	Poinsettia, <i>Euphorbia pulcherrima</i>	Euphorbiaceae FI A
O113	\$1.20	Impatiens, <i>Impatiens walleriana</i>	Balsaminaceae FI A
O114	\$2	Anthurium, <i>Anthurium andraeanum</i>	Araceae FI A
O115	\$3	Chrysanthemum, <i>Chrysanthemum cultivar</i>	Asteraceae FI A
O116	\$4	<i>Acalypha pendula</i>	Euphorbiaceae FI A
O117	\$5	<i>Heliconia rostrata</i>	Heliconiaceae FI A

**CROATIA****2010 December 8** (Red Cross Solidarity Week)

RA114	1.55k	Forest scene	T A U
-------	-------	--------------	-------

**CUBA****2012 November 29** (Flora and Fauna)

5333	10c	Bala de cañón, cannonball tree, <i>Couroupita guianensis</i>	Lecythidaceae FI A
5334	15c	Lotus, <i>Nelumbo nucifera</i>	Nelumbonaceae FI A
5336	90c	Orchid	Orchidaceae FI A

<b>CUBA (continued)</b>		<b>2013 January 15 (Orchids)</b>			
5344	5c	Orchid		Orchidaceae	Fl A
5345	10c	Orchid		Orchidaceae	Fl A
5346	15c	Orchid		Orchidaceae	Fl A
5347	65c	Orchid		Orchidaceae	Fl A
5348	75c	Orchid		Orchidaceae	Fl A
5349	90c	Orchid		Orchidaceae	Fl A
5350	1p	Orchid		Orchidaceae	Fl A SS
		<b>2013 January 25 (National Museum Centenary)</b>			
5356	65c	Ptg: Vase with Flowers			Fl A U
<b>CURAÇAO</b>		<b>2013 April 15 (Suggestions for environmentally friendly living)</b>			
113	65c	Save energy using LED lights: Leaf			V B U
114	118c	Drive green: Sunflower, <i>Helianthus annuus</i>		Asteraceae	Fl B
		Corn, <i>Zea mays</i>		Poaceae	Fr B
118	350c	Rainwater: Coconuts, <i>Cocos nucifera</i>		Areaceae	Fr B
119	428c	Plant trees & protect wetlands: Mangroves			T B U
<b>CZECH REPUBLIC</b>		<b>2013 September 4 (Karlštejn National Nature Reserve)</b>			
3579		<i>Campanula bononiensis</i>		Campanulaceae	Fl A MS Z
		<i>Melittis melissophyllum</i>		Lamiaceae	Fl A MS Z
		<i>Hepatica nobilis</i>		Ranunculaceae	Fl A MS Z
		<i>Saxifraga paniculata</i>		Saxifragaceae	Fl A MS Z
3579a	10k	<i>Dracocephalum austriacum</i>		Lamiaceae	Fl A MS
3579b	14k	<i>Sorbus exima</i>		Rosaceae	Fr A MS
3579c	18k	<i>Pulsatilla pratensis</i>		Ranunculaceae	Fl A MS
3579d	20k	<i>Rosa gallica</i>		Rosaceae	Fl A MS
<b>DENMARK</b>		<b>2013 October 29 (Christmas)</b>			
1657a	6k	Christmas rose, <i>Helleborus niger</i> (perf 13×12¾)		Ranunculaceae	Fl A SS
1658	6k	Christmas rose, <i>Helleborus niger</i> (die cut 13×13¼)		Ranunculaceae	Fl A
1661	6k	Christmas rose, <i>Helleborus niger</i> (die cut 13½)		Ranunculaceae	Fl A
<b>ECUADOR</b>		<b>2012 November 29 (Guayas Tourism)</b>			
2090d	75c	Rice farmer, <i>Oryza sativa</i>		Poaceae	Fr B MS
2090e	75c	Cacao farmer, <i>Theobroma cacao</i>		Malvaceae	Fr B MS
		<b>2013 January 16 (Galápagos Islands Type of 2012)</b>			
2094g	\$1	Flower			Fl A U
<b>FIJI</b>		<b>2013 October 30 (Mangrove Protection)</b>			
1296	50c	Mangroves			T A U
1297	65c	Mangrove, jellyfish, starfish			T B U
1298	\$1.20	Fish and underwater roots			T B U
1299	\$10	Planting mangroves			T B U
<b>FINLAND</b>		<b>2013 September 9 (Paintings by Järnefelt)</b>			
1443a	1 (85c)	Forest scene			T A U
		<b>2013 September 9 (Autumn Scenes)</b>			
1445e	1 (85c)	Leaves on park bench			V B U
<b>FRENCH POLYNESIA</b>		<b>2013 August 22 (Jasmine-scented)</b>			
1106	100fr	Jasmine, <i>Jasminum officinale</i>		Oleaceae	Fl A



<b>GAMBIA</b>		<b>2013 May 7</b> (Flowers of Africa)			
3511a	35d	Broadleaf Beechwood, <i>Faurea rochetiana</i>	Proteaceae	Fl A MS	
3511b	35d	Red Daisy, <i>Gerbera jamesonii</i>	Asteraceae	Fl A MS	
3511c	35d	Wagon Tree, <i>Protea nitida</i>	Proteaceae	Fl A MS	
3511d	35d	River Beechwood, <i>Faurea delevoyi</i>	Proteaceae	Fl A MS	
3512a	35d	Thistle Protea, <i>Protea scolymocephala</i>	Proteaceae	Fl A MS	
3512b	35d	African Violet, <i>Saintpaulia ionantha</i>	Gesneriaceae	Fl A MS	
3512c	35d	Common Protea, <i>Protea caffra</i>	Proteaceae	Fl A MS	
3512d	35d	King Protea, <i>Protea cynaroides</i>	Proteaceae	Fl A MS	
3513	110d	Welwitschia, <i>Welwitschia mirabilis</i>	Welwitschiaceae	Fr A SS	
3514	110d	Cape African Queen, <i>Anisodonteia capensis</i>	Malvaceae	Fl A SS	
<b>GHANA</b>		<b>2012 February 28</b> (Fruits and Vegetables)			
2721	27p	Unripe oranges, <i>Citrus sinensis</i>	Rutaceae	Fr A	
<b>GREAT BRITAIN (Guernsey)</b>		<b>2013 November 13</b> ( <i>Clematis</i> varieties developed by Raymon Evison)			
1227	40p	<i>Clematis</i> "Samaritan Jo"	Ranunculaceae	Fl A	
1228	53p	<i>Clematis</i> "Anna Louise"	Ranunculaceae	Fl A	
1229	55p	<i>Clematis</i> "Chelsea"	Ranunculaceae	Fl A	
1230	63p	<i>Clematis</i> "Edda"	Ranunculaceae	Fl A	
1231	71p	<i>Clematis</i> "The Countess of Wessex"	Ranunculaceae	Fl A	
1232	79p	<i>Clematis</i> "Giselle"	Ranunculaceae	Fl A	
<b>GREENLAND</b>		<b>2013 June 11</b> (Medicinal Plants)			
647	8.50k	Bladder Wrack, <i>Fucus vesiculosus</i>	Fucaceae	V A	
648	28k	Juniper, <i>Juniperus communis</i> var. <i>saxatilis</i>	Cupressaceae	Fr A	
<b>KAZAKHSTAN</b>		<b>2013 July 5</b> (Navruz Bayam)			
705		Apple blossoms, <i>Malus x domestica</i>	Rosaceae	Fl MS Z	
<b>LIBYA</b>		<b>2013 June 17</b> (Campaign Against Desertification)			
1773	500d	Planting seedling		V B U	
<b>MALAGASY</b>		<b>2011 February 16</b> (Flower Type of 2011)			
1625	300a	<i>Rhopalocarpus similis</i>	Sphaerosepalaceae	Fl A	
<b>MARSHALL ISLANDS</b>		<b>2013 November 28</b> (Thanksgiving Day 150th Anniv)			
1071	\$2	Wheat, <i>Triticum aestivum</i>	Poaceae	Fr B SS Z	
		Pear, <i>Pyrus communis</i>	Rosaceae	Fr B SS Z	
		Eggplant, <i>Solanum melongena</i>	Solanaceae	Fr B SS Z	
		Corn, <i>Zea mays</i>	Poaceae	Fr B SS Z	
		Grapes, <i>Vitis vinifera</i>	Vitaceae	Fr B SS Z	
		Cabbage, <i>Brassica oleracea</i>	Brassicaceae	Fr B SS Z	
		Orange, <i>Citrus sinensis</i>	Rutaceae	Fr B SS Z	
		Cauliflower, <i>Brassica oleracea</i>	Brassicaceae	Fr B SS Z	
		Onion, <i>Allium cepa</i>	Amaryllidaceae	Fr B SS Z	
		Apple, <i>Malus x domestica</i>	Rosaceae	Fr B SS Z	
		Tomato, <i>Lycopersicon esculentum</i>	Solanaceae	Fr B SS Z	
<b>MALAYSIA</b>		<b>2012 July 16</b> (Banknotes on Stamps)			
1412-13		Hibiscus, <i>Hibiscus rosa-sinensis</i>	Malvaceae	Fl B MS Z	
		Oil palm, <i>Eleais guineensis</i>	Aceraceae	T B MS Z	

<b>MALAYSIA</b> (continued)		<b>2012 November 5</b> (Greetings Stamps)			
1433a	60c	<i>Rafflesia</i> sp.		Rafflesiaceae	Fl B S
1434c	60c	Orchids		Orchidaceae	Fl A
		<b>2012 December 20</b> (Postal History of Kedah)			
1439	90c	Rice sheaf, <i>Oryza sativa</i>		Poaceae	Fr A
<b>NEVIS</b>		<b>2013 June 3</b> (Fruit)			
1746a	\$3.25	Lemon, <i>Citrus limon</i>		Rutaceae	Fr A MS
1746b	\$3.25	Persimmons, <i>Diospyros kaki</i>		Ebenaceae	Fr A MS
1746c	\$3.25	Yellow Plum, <i>Prunus domestica</i>		Rosaceae	Fr A MS
1746d	\$3.25	Oranges, <i>Citrus sinensis</i>		Rutaceae	Fr A MS
1747	\$9	Peach, <i>Prunus persica</i>		Rosaceae	Fr A SS
<b>PERU</b>		<b>2013 September 27</b> (Intl. Year of Quinoa)			
1822	5.50s	Quinoa, <i>Chenopodium</i> ssp.		Amaranthaceae	Fr A
<b>URUGUAY</b>		<b>2013 July 26</b> (Intl. Year of Quinoa)			
2434	45p	Quinoa, <i>Chenopodium</i> ssp.		Amaranthaceae	Fr A
<b>UZBEKISTAN</b>		<b>2013 June 17</b> (Flora)			
729	1400s	<i>Cousinia platystegia</i>		Compositae	V A
730	1500s	Date-Plum, Caucasian Persimmon, <i>Diospyros lotus</i>		Ebenaceae	V A
<b>VIETNAM</b>		<b>2013 April 1</b> (Orchids)			
3470	2000d	<i>Dendrobium aphyllum</i>		Orchidaceae	Fl A
3471	2500d	<i>Dendrobium chrysotoxum</i>		Orchidaceae	Fl A
3472	17500d	<i>Dendrobium draconis</i>		Orchidaceae	Fl A

**ANIMALS; DOGS & CATS; HORSES; INSECTS; BUGS**  
**BUTTERFLIES; MALARIA; FLOWERS & PLANTS; ORCHIDS**  
**MUSHROOMS; MARINE LIFE; FISH; TURTLES; REPTILES**  
**SHELLS; WHALES & SEALS; BIRDS; MINERALS**  
**MIXED BIOLOGY TOPICS**

Write for the price list of your choice

**EASTERN SHORE STAMP COMPANY**

**P.O. BOX 241, SEAFORD, DE 19963**

**e-mail: [essc@comcast.net](mailto:essc@comcast.net) Phone - Phone: (302) 629-2328**

## HERBS AND SPICES PART 2: SPICES

Christopher E. Dahle, BU1269

This is the second of a two-part series on herbs and spices. Herbs and spices are plants or plant parts used as flavor enhancers in food. As before, what follows is a listing of commonly used spices. The list is in alphabetical order by family. Each entry contains a short description of their use and growth characteristics. Not all have appeared on stamps. For those that have, I have chosen the stamps in the list when a single motif is dominant. Occasionally, there are two different species on one stamp.

***Illicium verum*****Illiciaceae****Star Anise**

[Note: Do not confuse this with anise (*Pimpinella anisum*). A design error on the Montserrat and Singapore stamps shows the seedpod of *Illicium* with the vegetative parts of *Pimpinella*.]

**Use:** Fruit and seeds used in Chinese, Indian Indonesian, and Malay cooking, in meat dishes and curries, especially in the Indian spice *garam masala*. For flavoring pastries in Scandinavia and Russia. Also in liqueurs. The compound anethole gives flavor to both kinds of anise.

**Growth characteristics:** Evergreen tree indigenous to Southeast Asia, only found in cultivation. Grows to 10 meters (m).



Malaysia 1348 (2011) [illus]; Montserrat 1262a (2011) [design error]; Singapore 1501 (2011) [illus] [design error]; Sweden 2507a (2005); North Viet Nam 191 (1962)

***Cinnamomum verum*****Lauraceae****Cinnamon**

**Use:** Ground bark used to flavor baked goods and desserts, especially in the U.S., and to flavor meat and stews in the Middle East. Also in pickles and soups. Popular in ancient Egypt and Rome. Gives off sweet aroma. Hot to taste.

**Growth characteristics:** Evergreen tree cultivated in tropical countries. Originally from Sri Lanka.

Comoro Islands 816D, 816E (1997), 964 (2001); Fiji 945 (2002); France-Mayotte 243a (2008); India 2321b (2009) [illus]; Laos 1845 (2011); Malaysia 1347 (2011) [illus]; St Lucia 963 (1990); St Vincent 3749f (2011); Tanzania 2225d (2008) [illus]

***Myristica fragrans*****Myristicaceae****Nutmeg, Mace**

**Use:** Nutmeg made from ground seed. Mace made from reddish aril surrounding seed. Used in savory dishes in a number of cuisines, e.g., potato dishes, omelets, and soufflés. Imparts flavor to *béchamel* sauce in French cuisine. Used in mulled cider and eggnog. Nutmeg has a warm, spicy sweet flavor. Mace is described as having a more delicate flavor.

**Growth characteristics:** Indigenous to Southeast Asia, widely grown in the Caribbean. Evergreen tree to 20m.

Comoro Is. 816G (1997), 963 (2001); Fiji 943 (2002); France-Mayotte 243b (2008); Grenada 1650 (1988), 2460 (1995); Mauritius 799 (1995); St Vincent 831 (1985); Seychelles 424 (1978); Singapore 1350 (2008) [illus]; Tanzania 2518 (2008) [illus]



***Pimenta dioica*****Myrtaceae****Allspice, Pimento**

**Use:** Dried unripe berries. Flavor combination of cloves, cinnamon, and nutmeg. In meat dishes in Middle Eastern and Caribbean, sausages, pickles. In *mole* in Mexican cooking and in Scandinavian cuisine. In liqueurs Benedictine and Chartreuse.

**Growth characteristics:** Indigenous to Central America and Caribbean. Evergreen shrub or small tree.

Jamaica 343 (1972) [illus]

***Syzygium aromaticum*****Myrtaceae****Clove**

**Use:** Dried flower buds. African, Asian, and Middle Eastern cooking use cloves in meat dishes, curries, and marinades. Often used in sweet dishes with fruit. In mulled wines. Warm, sweet aromatic flavor.

**Growth characteristics:** Evergreen tree to 10m. Indigenous to Indonesia.

India 2321d (2009) [illus]; Madagascar 298 (1957); Mauritius 801 (1995); St Vincent 1676 (1992); Tanzania 238 (1984), 589C (1990), 2225 (2003), 2358 (2005), 2429 (2006) [illus], 2519, 2520 (2008); Zanzibar 249, 250 (1957), 264-4 (1961), 314 (1964) 336, 343 (1966)

***Vanilla planifolia*****Orchidaceae****Vanilla**

**Use:** Whole seedpod, powdered pod, or extract. Major use is in ice cream and in other desserts to enhance flavorings like chocolate or caramel. Flavor is described as “pure, spicy, and delicate” with a complex floral aroma.

**Growth characteristics:** Climbing stems up to 10m. From tropical America, originally cultivated by Pre-Colombian Mesoamericans.

Antigua 2348c (2000); Comoros 80 (1969), 971 (2003); Fiji 944 (2002); France-Mayotte 130 (1999); French Polynesia 872 (2004); Gambia 2462a (2001); Honduras 1124, C1243 (2002); Madagascar 299 (1957); Malagasy 840 (1988); Mexico C633 (1980); New Caledonia 1028 (2007) [illus]; St Vincent 1371 (1990), 2775c (2000), 3571c (2007); Seychelles 199 (1962), 391 (1978); Tanzania 2150 (2000), 2318c (2004) 2522b (2008) [illus]; Turks & Caicos 1119 (1995)

***Papaver somniferum*****Papaveraceae****Poppy Seeds**

**Use:** Ripe seeds used in baked goods and pastries in a number of cuisines. Also as garnish or in candies.

**Growth characteristics:** Believed origin in southwest Asia. Cultivated as crops, to 1.5m. Same plant as opium poppy, but seeds contain no opioids.

Afghanistan 1396-98A (2003) [illus]; Egypt 1887 (2004); North Korea (1974); Laos 1481 (2000); Montserrat 1279b (2011); Palestine Authority 54 (1996); Monaco 1393 (1983); Myanmar 323 (1995); Pakistan 679 (1987); Syria 1117 (1987)



***Sesamum indicum*****Pedaliaceae****Sesame**

**Use:** Used in breads and baked goods, in U.S. for hamburger buns. Seeds and oil used in Chinese, Japanese, Korean, Indian, and Middle Eastern cuisines (where it is used in *hummus* and *tahini*). Provides a nutty taste and crunch to foods.

**Growth characteristics:** Annual plant up to 1m. Originated in East Africa or India. One of earliest cultivated plants, with records dating back 5000 years.

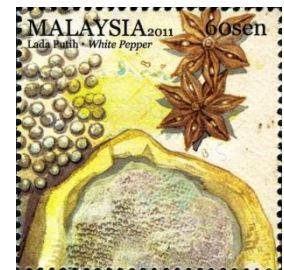
Sierra Leone 231 (1963); Somalia 253 (1961) [illus]; Surinam 1005 (1995) [illus]; Thailand 1844 (1998); Uganda 1209 (1993)

***Piper nigrum*****Piperaceae****Pepper**

**Use:** Ripe or unripe fruits are harvested. Black pepper is made from sun-dried unripe fruit. White pepper is made from ripe fruit with skins removed. Immature fruits give green pepper. Original hot taste for Indian food. Used for flavoring many savory foods. White pepper is used in French and Chinese cuisines.

**Growth characteristics:** Flowering vine up to 10m grown on trellises. Native to south India. Cultivated for 3000 years, used for 9000 years.

Comoro Is. 816A, 816H (1997), 947 (1999?); Fiji 942 (2002); Gabon 373 (1976); Gambia 2410f (2001); India 2321a (2009) [illus]; Madagascar 313 (1957); Malaysia 1350i,j (2011); [illus]; Malaysian States [e.g., Johore 193 (1986)]; St Vincent 3149e (2011); Sarawak 190 (1950); Singapore 1347,1351 (2008); St Thomas & Prince 1290 (1996); St Vincent 3749e (2011); Tanzania 2522e (2008) [illus]; Thailand 1996 (2001); Wallis & Futuna 473 (1995)

***Alpinia galangal*****Zingiberaceae****Galangal**

**Use:** Chopped rhizome used in Asian, especially Thai cuisines. Stronger taste than ginger.

**Growth characteristics:** Perennial herb to 2m indigenous to tropical Asia.

Not illustrated

***Curcuma longa*****Zingiberaceae****Turmeric**

**Use:** Powdered roots used in curry powders throughout Asia. Occasionally in sweet dishes like Indian *Sfouf*. Also used as coloring agent. Warm and bitter flavor.



**Growth characteristics:** Leafy stemless plant from South or Southeast Asia, grows to 1m.

France-Mayotte 243c (2008) [illus]; India 1641 (1997), 2321e (2009); Laos 153 (1967); Malaysia 1350c,d (2011) [illus]; Philippines 2132 (1992); St Vincent 3749d (2011); Singapore 1503 (2011); Tanzania 2523 (2008)

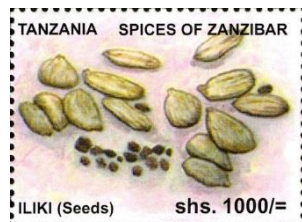


***Elettaria cardamomum***      **Zingiberaceae**      **Cardamom**

**Use:** Ripe fruits and seeds, used whole or ground to flavor Indian curries and drinks such as Arabian coffee. Scandinavian cuisine uses it in a variety of foods including mulled wines and stewed fruit.

**Growth characteristics:** Perennial herb, native to India, grows 2–4m. Cultivated under shade trees.

Cambodia 109 (1962); India 2321c (2009) [illus]; Malaysia 1349 (2011) [illus]; Mauritius 802 (1995); Tanzania 2521 [illus], 2522a (2008) [illus]

***Zingiber officinale***      **Zingiberaceae**      **Ginger**

**Use:** Rhizomes are used fresh, dried, or powdered in Asian in meat dishes, soups, fish, curries, and stir-fries. In other parts of the world, used in confectionery and to flavor drinks. Pungent, aromatic spice.

**Growth characteristics:** Perennial herb to 1.2m, thought to be indigenous to northeast India or China, but not found in the wild.

Ethiopia 1144 (1986); France-Mayotte 243d (2008) [illus]; St Lucia 1184 (2003); St Vincent 832 (1985); Tanzania 2522c (2008) [illus]

**References:**

<http://en.wikipedia.org/wiki/Spice>

[http://en.wikipedia.org/wiki/List\\_of\\_culinary\\_herbs\\_and\\_spices](http://en.wikipedia.org/wiki/List_of_culinary_herbs_and_spices)

<http://www.ors.od.nih.gov/pes/dats/food/balance/Documents/herbs-spices.pdf>

<http://www.kew.org/plants-fungi/plants-fungi-A-Z/index.htm>

Van Wyk, B-E. 2005. *Food Plants of the World: An Illustrated Guide*. Timber Press, Portland, OR 97204. 480pp.



# FUNGI

Editor

Paul A. Mistretta, BU1681



## New Listings

Scott#	Denom	Common Name/Scientific Name	Family	Code
<b>BURUNDI</b>				
<b>2012 December 21 (Mushrooms)</b>				
1213a	1180fr	Blusher, <i>Amanita rubescens</i>	Amanitaceae	A
1213b	1190fr	Black Morel, <i>Morchella conica</i>	Morchellaceae	A
1213c	3000fr	Chanterelle, <i>Cantharellus cibarius</i>	Cantharellaceae	A
1213d	3000fr	Penny Bun, <i>Boletus edulis</i>	Boletaceae	A
1213		MS of 4 (Sc#1213a-d)		
1214a	1180fr	Livid Entoloma, <i>Entoloma sinuatum</i>	Entolomataceae	A
1214b	1190fr	L: Fool's Mushroom, <i>Amanita verna</i> R: Fly Agaric, <i>Amanita muscaria</i>	Amanitaceae Amanitaceae	A A
1214c	3000fr	Sickener, <i>Russula emetica</i>	Russulaceae	A
1214d	3000fr	L: Fly Agaric, <i>Amanita muscaria</i> R: Brown Roll-rim, <i>Paxillus involutus</i>	Amanitaceae Paxillaceae	A A
1214		MS of 4 (Sc#1214a-d)		
1238	SS 7500fr	Caesar's Mushroom, <i>Amanita caesarea</i>	Amanitaceae	A
1239	SS 7500fr	Devil's Bolete, <i>Boletus satanas</i>	Boletaceae	A
<b>2013 August 5 (Miles Joseph Berkeley [1803-1889] &amp; Fungi)</b>				
1355a	1090fr	Butter Bolete, <i>Boletus appendiculatus</i>	Boletaceae	A
1355b	1180fr	Gypsy Mushroom, <i>Cortinarius caperatus</i>	Cortinariaceae	A
1355c	3000fr	Fly Agaric, <i>Amanita muscaria</i>	Amanitaceae	A
1355d	3000fr	Sulphur Tuft, <i>Hypholoma fasciculare</i>	Strophariaceae	A
1355		MS of 4 (Sc#1355a-d)		
1375	SS 7500fr	Queen Bolete, <i>Boletus regineus</i> Penny Bun, <i>Boletus edulis</i>	Boletaceae Boletaceae	A A
<b>CHINA (Taiwan)</b>				
<b>2013 July 24 (Mushrooms)</b>				
The four single stamps have a white border. The stamps in the MS lack the border.				
4128	\$5	Clustered Coral, <i>Ramaria botrytis</i>	Gomphaceae	A
4129	\$5	Black Morel, <i>Morchella elata</i>	Morchellaceae	A
4130	\$12	Shaggy Chanterelle, <i>Gomphus floccosus</i>	Gomphaceae	A
4131	\$12	Orange Peel Fungus, <i>Aleuria aurantia</i>	Pyrenomycetaceae	A
4132a	\$5	Clustered Coral, <i>Ramaria botrytis</i>	Gomphaceae	A
4132b	\$5	Black Morel, <i>Morchella elata</i>	Morchellaceae	A
4132c	\$12	Shaggy Chanterelle, <i>Gomphus floccosus</i>	Gomphaceae	A
4132d	\$12	Orange Peel Fungus, <i>Aleuria aurantia</i>	Pyrenomycetaceae	A
4132		MS of 4 (Sc#4132a-d)		

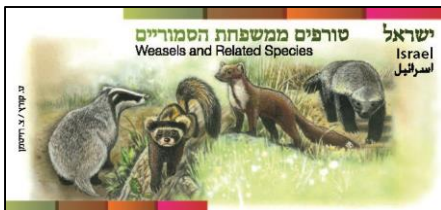
<b>CROATIA</b>		<b>2013 September 3 (Mushrooms)</b>		
880a	4.60k	Parasol Mushroom, <i>Macrolepiota procera</i>	Agaricaceae	A
880b	4.60k	Royal Bolete, <i>Boletus regius</i>	Boletaceae	A
880c	4.60k	L: White Truffle, <i>Tuber magnatum</i>	Tuberaceae	A
		R: Black Truffle, <i>Tuber melanosporum</i>	Tuberaceae	A
880		Horiz strip of 3 (Sc#880a–c)		
<b>CZECH REPUBLIC</b>		<b>2013 September 4 (Karlštejn National Nature Reserve) (SS/4+4labels)</b>		
3579	Margin	LL: Spring Orange Peel Fungus, <i>Caloscypha fulgens</i>	Caloscyphaceae	A
<b>ESTONIA</b>		<b>2013 September 12 (Mushrooms)</b>		
738	45c	Death Cap, <i>Amanita phalloides</i>	Amanitaceae	A

A special thanks to Jack Congrove, our Senior Editor, for bailing me out in the last issue. I had surgery in the beginning of October and was poorly focused on the input I needed to provide to him. So, what I did provide was not nearly as good as it should have been. Jack jumped in and upgraded my material to include several items I had missed while preoccupied, and, in the process, saved me from a real embarrassment.

Again, thanks Jack!

### ISRAEL ATM LABELS

In January 2014, Israel Post began a new series of ATM labels showing Weasels and Related Species. These cute little animals are depicted on the general January ATM label and the Marbled Polecat (*Vormela peregusna*) dances over the February ATM label.



Marbled polecats inhabit the drier areas and grasslands from south-eastern Europe to western China. Like other members of Mustelinae, they can emit a strong-smelling secretion from anal sacs under the tail when threatened.

These solitary animals range in length from 11–13 inches excluding the tail. Males can weigh up to 1.5 pounds. They have weak eyesight and rely on a well-developed sense of smell. They eat small rodents, lizards, fish, and insects, and sometimes fruit and grass. They are classified as a vulnerable species due to habitat destruction.





# ORNITHOLOGY

Editor

Glenn G. Mertz, BU1455



## Updates/Corrections

### AUSTRALIA – Vol. 59(1), p.16      2009 September 9

**Update:** Australia has reissued the following issues and Scott Catalogue has updated their numbers to reflect the reissue of these stamps and two others. These three issues were reissued, using the same values as originally designated, but reflect a new date of May 11, 2013. The new numbers for the new date are Sc#3148a, 3149b, 3150c, and 3151b. The book number is 3151c for the four stamps.

### AUSTRALIA – Vol. 60(1), p.16      2010 October 26

**Update:** For this set (Sc#3373–76), the new numbers are Sc#3373a–76a, and Sc#3376b for the booklet containing them.

### AUSTRALIA – Vol. 61(4), p.214      2012 March 6

**Update:** For this set (Sc#3662–65), the new numbers are Sc#3662a–65a, and Sc#3665b for the booklet containing them.

### ST. THOMAS & PRINCE ISLANDS – Vol. 60(3), p.91

**Update:** Scott Publishing has assigned Sc#2317a–e to the set with the Yellow-billed Pintail, with number for the bird stamp being Sc#2317e.

### ST. THOMAS & PRINCE ISLANDS – Vol. 60(3), p.92

**Update:** For the sheet that contains the Mauritius Kestrel, Scott Publishing has assigned Sc#2315a–e, with the bird stamp itself being Sc#2315a.

## New Issues

Scott#	Denom	Common Name/Scientific Name	Family/Subfamily	Code
--------	-------	-----------------------------	------------------	------

### ARUBA

2013 April 5

A\*

An issue of five se-tenant stamps (Sc#425a–e) of Aruban Bank Notes, of which one features a bird. Designer: Studio Labranda. Offset, in sheets of ten, by Austrian Government Printing Office.

425c	200c	Burrowing Owl, <i>Athene cucularia</i>	Strigidae	
------	------	--	-----------	--

2013 August 1

B\*

A pane of 12 se-tenant stamps, all birds. Designer: Elvis Trump. Offset by Austrian Government Printing Office.

429a	167c	Bananaquit, <i>Coereba flaveola</i>	Thraupidae	
429b	167c	Brown-throated Parakeet, <i>Aratinga pertinax</i> (The stamp shows <i>A. p. arubensis</i> , a subspecies)	Psittacidae	
429c	167c	White-cheeked Pintail, <i>Anas bahamensis</i>	Anatidae	
429d	167c	Rufous-collared Sparrow, <i>Zonotrichia capensis</i>	Emberizidae	
429e	167c	Crested Bobwhite, <i>Colinus cristatus</i>	Odontophoridae	
429f	167c	Common Ground-Dove, <i>Columbina passerine</i>	Columbidae	
429g	167c	Snowy Egret, <i>Egretta thula</i>	Ardeidae	
429h	167c	Venezuelan Troupial, <i>Icterus icterus</i>	Icteridae	

**ARUBA** (continued)

429i	167c	Tropical Mockingbird, <i>Mimus gilvus</i>	Mimidae
429j	167c	Brown Pelican, <i>Pelecanus occidentalis</i>	Pelecanidae
429k	167c	Cabot's Tern, <i>Thalasseus acuflavidus</i>	Laridae
		(This is a subspecies of the Sandwich Tern, <i>Thalasseus sandvicensis</i> . The stamp is captioned <i>T. eurygnatha</i> , another subspecies of the Sandwich Tern)	
429l	167c	Little Owl, <i>Athene noctua</i>	Strigidae
		(This stamp has the species name of <i>cunicularia</i> , which is not a subspecies of Little Owl, but of the Burrowing Owl)	

**ASCENSION ISLAND****2013 August 16****A\***

A set of six stamps, all showing Frigatebirds. Designer: Bee Design. Photographers: Nicola Weber, Derren Fox, Martin Routledge, and Anselmo Pelembe. Offset by Cartor.

1093	20p	Ascension Frigatebird, <i>Fregata aquila</i> (♂ & ♀)	Fregatidae
1094	45p	Same bird, male on egg	
1095	50p	Same bird, chick	
1096	60p	Same bird, female and chick	
1097	£1.10	Same bird, juvenile	
1098	£1.45	Same bird, male in flight	

**AUSTRALIA****2013 May 11****C\***

A two-stamp issue (Sc#3920–21) for first Commonwealth Banknotes of Australia, but only one banknote features a bird.

3921	\$2.60	Emu, <i>Dromaius novaehollandiae</i>	Dromaiidae
------	--------	--------------------------------------	------------

**2013 May 11****A\***

A set of four stamps of different species of Australian birds of the Pardalotus genus. The four stamps were printed in a booklet pane and one of the four as a s/a coil stamp, and one as a s/a booklet stamp. Designers: Christopher Pope and Jo Mure. Offset in sheets of 50 and coils of 100 for the 60c value, by McKellar Renown.

3922	60c	Forty-spotted Pardalote, <i>Pardalotus quadragintus</i>	Pardalotidae	Vol.62(2)
3926	60c	Same bird, s/a coil		
3923	\$1.20	Spotted Pardalote, <i>Pardalotus punctatus</i>	Pardalotidae	
3927	\$1.20	Same bird, s/a bklt		
3924	\$1.80	Red-browed Pardalote, <i>Pardalotus rubricatus</i>	Pardalotidae	Vol.62(2)
3925	\$3.00	Striated Pardalote, <i>Pardalotus striatus</i>	Pardalotidae	Vol.62(2)
3925a		Bklt pane of 4 (Sc#3922–25)		

**2013 July 2****B\***

A pane of five stamps (Sc#3936–40), Part 2 of Road Trip Australia, with one stamp featuring a bird. Designer: Gavin Ryan. Offset by McKellar Renown in sheets of 50 and booklets of 10 and 20 in self-adhesive format.

3937	60c	Silver Gull, <i>Chroicocephalus novaehollandiae</i>	Laridae
3941	60c	Same bird, s/a bklt	

**AUSTRALIAN ANTARCTIC TERR. 2013 September 10****B\***

Third set of five se-tenant stamps (Sc#L172–76) commemorating the 100th Anniversary of the Australasian Antarctic Expedition, but only one stamp features a bird. Designer: Andrew Hogg Design. Offset by RA Print.

L174	60C	Antarctic Petrel, <i>Thalassoica antarctica</i>	Procellariidae
------	-----	---	----------------

**AZERAIJAN****2013 July 16****A\***

A set of five definitive stamps, all of birds. Designer: K. Mirzoyev. Offset, no printer information.

1031	10g	Blue-cheeked Bee-eater, <i>Merops persicus</i>	Meropidae
1032	20g	European Roller, <i>Coracias garrulus</i>	Coraciidae
1033	30g	Common Kingfisher, <i>Alcedo atthis</i>	Alcedinidae
1034	50g	Eurasian Hoopoe, <i>Upupa epops</i>	Upupidae
1035	60g	Eurasian Jay, <i>Garrulus glandarius</i>	Corvidae

**BELARUS****2013 July 9****A\***

Four stamps and two labels (Sc#865–68), all non-denominated, each with a different letter representing different classes of mail, for zoos in Belarus, but only one of the stamps features a bird. Designer: Alexander Mityanin. Offset by A.T. Nepogodin.

867	(6500r)	Steller's Sea Eagle, <i>Haliaeetus Pelagius</i>	Accipitridae
868a		SS of 4+2 labels (Sc#865–68)	

**BELGIUM****2013 May 12****A\***

A booklet of ten self-adhesive, non-denominated “1” domestic rate stamps (Sc#2644–53) of animals in the Antwerp Zoo, with two stamps featuring birds. Designer: Myriam Voz. Gravure by State Printer.

2644	(67c)	Snowy Owl, <i>Bubo scandiacus</i>	Strigidae
2647	(67c)	King Penguin, <i>Aptenodytes patagonicus</i>	Spheniscidae

**2013 October 16****A\***

A single stamp for Registration. No designer or printing method or printer information

F4	(1.20l)	Northern Lapwing, <i>Vanellus vanellus</i>	Charadriidae
----	---------	--	--------------

**BRITISH ANTARCTIC TERR.****2012 November 16****A\***

A set of five self-adhesive coil stamps for Airmail Post Card rate. I did not find any article in *Linn's Stamp News* under their “New Issues” listing, so I have no information relative to designer or printer method or printer name.

C18	(65p)	Gentoo Penguin, <i>Pygoscelis papua</i>	Spheniscidae
C19	(65p)	Adelie Penguin, <i>Pygoscelis adeliae</i>	Spheniscidae
C20	(65p)	Chinstrap Penguin, <i>Pygoscelis antarcticus</i>	Spheniscidae
C21	(65p)	Adelie Penguin, <i>Pygoscelis adeliae</i>	Spheniscidae
C22	(65p)	Gentoo Penguin, <i>Pygoscelis papua</i>	Spheniscidae

**BULGARIA****2013 May 22****C\***

A SS with one stamp for the Mantarica Ecology Reserve. Designer: Maglena Konstantinove. Offset, no printer information.

4643	1.50L	Eurasian Capercaillie, <i>Tetrao urogallus</i>	Phasianidae
------	-------	--	-------------

**2013 June 17****A\***

Four se-tenant stamps (Sc#4648a–d) for Tourist Attractions in the southwest regions of Bulgaria, but only one stamp features a bird. Designer: Ivan Gazdov. Offset, no printer information.

4648d	65s	Eurasian Nutcracker, <i>Nucifraga caryocatactes</i>	Corvidae
-------	-----	---	----------

**BURUNDI****2012 December 21****A\***

Five sheets of four se-tenant stamps and five SS. No designer or printing method or printer information.

1199a	1180fr	Black-winged Kite, <i>Elanus caeruleus</i>	Accipitridae	
1199b	1190fr	Yellow-billed Kite, <i>Milvus aegyptius</i> (ssp. of Black Kite)	Accipitridae	
1199c	3000fr	African Fish-Eagle, <i>Haliaeetus vocifer</i>	Accipitridae	
1199d	3000fr	Red Kite, <i>Milvus milvus</i>	Accipitridae	
1224	SS 7500fr	African Fish-Eagle, <i>Haliaeetus vocifer</i>	Accipitridae	
	Margin	Same bird		
1200a	1180fr	Great Horned Owl, <i>Bubo virginianus</i>	Strigidae	
1200b	1190fr	Spotted Eagle-Owl, <i>Bubo africanus</i>	Strigidae	
1200c	3000fr	L: Eurasian Eagle-Owl, <i>Bubo bubo</i>	Strigidae	
		R: Spotted Eagle-Owl, <i>Bubo africanus</i>	Strigidae	
1200d	3000fr	L: Eastern Screech-Owl, <i>Megascops asio</i>	Strigidae	
		R: Northern White-faced Owl, <i>Ptilopsis leucotis</i>	Strigidae	
1225	SS 7500fr	Barn Owl, <i>Tyto alba</i>	Tytonidae	
	Margin	UL: Rusty-barred Owl, <i>Strix hylophila</i>	Strigidae	<b>new</b>
		LR: Great Horned Owl, <i>Bubo virginianus</i>	Strigidae	
1201a	1180fr	Andean Condor, <i>Vultur gryphus</i>	Cathartidae	
1201b	1190fr	Red-headed Vulture, <i>Sarcogyps calvus</i>	Accipitridae	Vol.62(3)
		(This species was previously shown on an Afghanistan issue declared illegal)		
1201c	3000fr	Hooded Vulture, <i>Necrosyrtes monachus</i>	Accipitridae	
1201d	3000fr	Lammergeyer, <i>Gypaetus barbatus</i>	Accipitridae	
1226	SS 7500fr	King Vulture, <i>Sarcoramphus papa</i>	Cathartidae	
	Margin	UR: King Vulture, <i>Sarcoramphus papa</i>	Cathartidae	
		LR: Black Vulture, <i>Coragyps atratus</i>	Cathartidae	
1202a	1180fr	Gray Parrot, <i>Psittacus erithacus</i>	Psittacidae	
1202b	1190fr	Fischer's Lovebird, <i>Agapornis fischeri</i>	Psittacidae	
1202c	3000fr	Cape Parrot, <i>Poicephalus robustus</i>	Psittacidae	
1202d	3000fr	Yellow-collared Lovebird, <i>Agapornis personatus</i>	Psittacidae	
1227	SS 7500fr	Meyer's Parrot, <i>Poicephalus meyeri</i>	Psittacidae	
	Margin	UL: Yellow-collared Lovebird, <i>Agapornis personatus</i>	Psittacidae	
		R: Blue-throated Macaw, <i>Ara glaucogularis</i>	Psittacidae	
1203a	1180fr	Golden Pheasant, <i>Chrysolophus pictus</i> (bird in flight)	Phasianidae	
1203b	1190fr	Same bird (two male birds)	Phasianidae	
1203c	3000fr	Same bird (denom at LR)	Phasianidae	
1203d	3000fr	Same bird (denom at LL)	Phasianidae	
1228	SS 7500fr	Same bird	Phasianidae	

**2013 August 20****A\***

1388a	1020fr	Augur Buzzard, <i>Buteo augur</i>	Accipitridae	
1388b	1180fr	White-backed Vultur, <i>Gyps africanus</i>	Accipitridae	
1388c	3000fr	Verreaux's Eagle, <i>Aquila verreauxii</i>	Accipitridae	
1388d	3000fr	Steppe Eagle, <i>Aquila nipalensis</i>	Accipitridae	
1413	SS 7500fr	Bateleur, <i>Terathopius ecaudatus</i>	Accipitridae	
1401a	1090fr	Long-eared Owl, <i>Asio otus</i>	Strigidae	
1401b	1190fr	Striped Owl, <i>Pseudoscops clamator</i>	Strigidae	
1401c	3000fr	Short-eared Owl, <i>Asio flammeus</i>	Strigidae	
1401d	3000fr	Tawny Owl, <i>Strix aluco</i>	Strigidae	
1426	SS 7500fr	Great Horned Owl, <i>Bubo virginianus</i>	Strigidae	

**DOMINICA****2013 September 2****A\***

A SS as part of a pane of seven se-tenant stamps of parrots and marine life. No birds on the seven stamps. No designer information. Offset, no printer information

2796 \$5.00 Rainbow Lorikeet, *Trichoglossus haematodus moluccanus* Psittacidae

**ECUADOR****2013 January 16****A\***

Two booklets, each with eight se-tenant stamps (Sc#2094a-h & Sc#2095a-h), titled, "Galapagos, Enchanted Islands." Bklt 1 contains one stamp with a bird, and Bklt 2 contains four stamps featuring birds.

2094b 25c Waved Albatross, *Phoebastria irrorata* Diomedidae  
 2095a 25c Magnificent Frigatebird, *Fregata magnificens* Fregatidae  
 2095c 50c Woodpecker Finch, *Camarhynchus pallidus* Thraupidae  
 2095d 50c Vermilion Flycatcher, *Pyrocephalus rubinus* Tyrannidae  
 2095e 75c Galapagos Hawk, *Buteo galapagoensis* Accipitridae

**FALKLAND ISLANDS****2013 October 3****A\***

Four stamps (Sc#1108a-b & Sc#1109a-b). Designers and photographers: Ian J. & Georgina Strange. Offset by BDT International. The stamps are titled, "Color in Nature" as was a similar set 2012.

1108a 30p Macaroni Penguin, *Eudyptes chrysolophus* Spheniscidae  
 1109a 75p Crested Duck, *Lophonetta specularioides* Anatidae

**2013 November 21****A\***

Six non-denominated "Airmail postcard" rate stamps. Designer: Robin Carter. Offset by BDT International. The stamps were issued with white frames and a SS of the six stamps without white frames.

C15 (65p) Rockhopper Penguin, *Eudyptes chrysocome* Spheniscidae  
 C21a (65p) Same bird, w/o white frame  
 C16 (65p) Gentoo Penguin, *Pygoscelis papua* Spheniscidae  
 C21b (65p) Same bird, w/o white frame  
 C17 (65p) Magellanic Penguin, *Spheniscus magellanicus* Spheniscidae  
 C21c (65p) Same bird, w/o white frame  
 C18 (65p) Rockhopper Penguin, *Eudyptes chrysocome* Spheniscidae  
 C21d (65p) Same bird, w/o white frame  
 C19 (65p) King Penguin, *Aptenodytes patagonicus* Spheniscidae  
 C21e (65p) Same bird, w/o white frame  
 C20 (65p) Macaroni Penguin, *Eudyptes chrysolophus* Spheniscidae  
 C21f (65p) Same bird, w/o white frame

**FRENCH SOUTHERN & ANTARCTIC TERR. 2013 April 5****A\***

A voyage booklet type issue of 1999, of 16 stamps (Sc#482a-p) containing four stamps per booklet pane, with four stamps featuring birds. Designer: F. Chauvlier. Offset by Phila Post.

482b £1 Adelie Penguin, *Pygoscelis adeliae* Spheniscidae  
 482d £1 Adelie Penguin, *Pygoscelis adeliae* Spheniscidae  
 482h £1 Emperor Penguin, *Aptenodytes forsteri* Spheniscidae  
 482i £1 Adelie Penguin, *Pygoscelis adeliae* Spheniscidae

**GERMANY****2013 August 8****A\***

Three stamps titled, "Young Songbirds." Designer: Julia Warbanow. Offset by Bagel Security Print.

B1079 58c+27c European Goldfinch, *Carduelis carduelis* Fringillidae  
 B1080 90c+40c Eurasian Bullfinch, *Pyrrhula pyrrhula* Fringillidae  
 B1081 145c+55c Eurasian Blue Tit, *Cyanistes caeruleus* Paridae

**GIBRALTAR****2013 September 14****A\***

A sheet of six stamps (Sc#1405–10) for Endangered Animals, but only two stamps feature birds.

1405	42p	Jackass Penguin, <i>Spheniscus demerus</i>	Spheniscidae
1410	42p	Red-crowned Crane, <i>Grus japonensis</i>	Gruidae
1410a		SS of 6 (Sc#1405–10)	

**GUINEA****2011–2013**

The last time I listed issues of Guinea was in Vol. 62(2) and prior to that in Vol. 61(1). As of the 2012 Scott Stamp Catalogue, 2004 is still the last date they have listed any issues for any subject. Following are a number of new issues released since 2011, still without Scott Catalogue numbers and no “New Issue” articles in *Linn’s Stamp News*. What the Guinea postal authorities will eventually, if ever, confirm as valid or invalid issues, is anybody’s guess.

**2011 September 30****B\***

A SS for the Berlin Zoo with one stamp.

N/A	SS 40000fr	Emperor Penguin, <i>Aptenodytes forsteri</i>	Spheniscidae
-----	------------	--	--------------

**2011 December 2****A\***

A sheet of three stamps of three different parrots.

N/A	5000fr	Meyer’s Parrot, <i>Poicephalus meyeri</i>	Psittacidae
N/A	15000fr	Gray Parrot, <i>Psittacus erithacus</i>	Psittacidae
N/A	20000fr	Red-bellied Parrot, <i>Psittacus rufiventris</i>	Psittacidae

A sheet of three stamps of three different owls.

N/A	5000fr	Striped Owl, <i>Pseudoscops clamator</i>	Strigidae
N/A	15000fr	Short-eared Owl, <i>Asio flammeus</i>	Strigidae
N/A	20000fr	Fearful Owl, <i>Nesasio solomonensis</i>	Strigidae

A sheet of three stamps of three different kingfishers.

N/A	5000fr	Black-backed Dwarf Kingfisher, <i>Ceyx erithaca</i>	Alcedinidae
N/A	15000fr	Sacred Kingfisher, <i>Todiramphus sanctus</i>	Alcedinidae
N/A	20000fr	Common Kingfisher, <i>Alcedo atthis</i>	Alcedinidae

**2011 December 30****A\***

A SS with one stamp for Species Discoveries.

N/A	SS 40000fr	R: Rufous Twisting, <i>Cnipodectes superrufus</i>	Tyrannidae	Vol.61(2)
		L: Bald Parrot, <i>Pyrilia aurantiocephala</i>	Psittacidae	Vol.61(2)

**2012 June 1****A\***

Guinea issued nine sheets, each with three stamps, for Endangered Animals in West Africa. Six of the sheets each feature one stamp with a bird. Two sheets feature two stamps with a bird. And in one sheet, all three stamps feature birds. These sets include three SS, with one SS having a stamp as part of the sheet. If this issue receives Scott recognition, I have no idea how they will be numbered, so I am using a sequence number to designate the sheets.

**Sheet #1**

N/A	5000fr	Lesser Kestrel, <i>Falco naumanni</i>	Falconidae
-----	--------	---------------------------------------	------------

**Sheet #2**

N/A	5000fr	White-headed Vulture, <i>Trigonoceps occipitalis</i>	Accipitridae
N/A	5000fr	Yellow-casqued Hornbill, <i>Ceratogymna elata</i>	Bucerotidae
N/A	15000fr	White-necked Rockfowl, <i>Picathartes gymnocephalus</i>	Picathartidae

**Sheet #3**

N/A	5000fr	Lesser Kestrel, <i>Falco naumanni</i>	Falconidae
N/A	15000fr	Brown-cheeked Hornbill, <i>Ceratogymna cylindrical</i>	Bucerotidae

**GUINEA (continued) Sheet #4**

N/A	5000fr	Damara Tern, <i>Sternula balaenarum</i>	Laridae	
N/A	5000fr	R: Copper-tailed Glossy-Starling, <i>Lamprotornis cupreocauda</i>	Sturnidae	Vol.62(1)
		L: Greater Blue-eared Glossy-Starling, <i>Lamprotornis chalybaeus</i>	Sturnidae	
N/A	15000fr	Purple Glossy-Starling, <i>Lamprotornis purpureus</i> (Cap: <i>Lamprotornis cupreocauda</i> )	Sturnidae	

**Sheet #5**

N/A	5000fr	Gray Parrot, <i>Psittacus erithacus</i>	Psittacidae	
-----	--------	---	-------------	--

**Sheet #6**

N/A	15000fr	Black-tailed Godwit, <i>Limosa limosa</i>	Scolopacidae	
-----	---------	---	--------------	--

**Sheet #7**

N/A	5000fr	Yellow-casqued Hornbill, <i>Ceratogymna elata</i>	Buceroridae	
-----	--------	---	-------------	--

**Sheet #8**

N/A	5000fr	Golden Eagle, <i>Aquila chrysaetos</i>	Accipitridae	
-----	--------	--	--------------	--

**Sheet #9**

N/A	5000fr	Gray Parrot, <i>Psittacus erithacus</i>	Psittacidae	
-----	--------	---	-------------	--

N/A	SS 45000fr	Gray Parrot, <i>Psittacus erithacus</i> Margin LR: Same bird	Psittacidae	
-----	------------	---	-------------	--

N/A	SS 45000fr	Raso Skylark, <i>Alauda razae</i>	Alaudidae	
-----	------------	-----------------------------------	-----------	--

N/A	SS 45000fr	Golden Eagle, <i>Aquila chrysaetos</i> Margin L, R, LL, UR: Same bird	Accipitridae	
-----	------------	--	--------------	--

**2012 August 30****B\***

Sheet of three stamps marking the birthdate of Mohandas K. Gandhi (1869–1948) with one stamp featuring a bird.

N/A	20000fr	Indian Peafowl, <i>Pavo cristatus</i>	Phasianidae	
-----	---------	---------------------------------------	-------------	--

**2012 August 30****B\***

A sheet of three stamps including two stamps featuring a bird, and a SS with one stamp that features a bird, for the 100th Anniversary of Robert Falcon Scott's expedition to the South Pole.

N/A	5000fr	Long-tailed Jaeger, <i>Stercorarius longicaudus</i>	Stercorariidae	
-----	--------	---	----------------	--

N/A	15000fr	Emperor Penguin, <i>Aptenodytes forsteri</i>	Spheniscidae	
-----	---------	--	--------------	--

N/A	SS 30000fr	Snow Petrel, <i>Pagodroma nivea</i>	Procellariidae	
-----	------------	-------------------------------------	----------------	--

**2012 September 12****B\***

A three-value sheet for Albert Schweitzer, with two stamps featuring birds. The sheet is for 60th Anniversary of his award of the Nobel Prize.

NA	5000fr	Rufous-vented Paradise Flycatcher, <i>Tersiphone rufocinerea</i>	Monarchidae	Vol.62(1)
----	--------	--	-------------	-----------

N/A	15000fr	Black Bee-eater, <i>Merops gularis</i>	Meropidae	
-----	---------	--	-----------	--

**2012 December 3****C\***

A SS for Earth Summit with one stamp featuring two birds.

N/A	SS 40000fr	L: Scarlet Macaw, <i>Ara macao</i>	Psittacidae	
-----	------------	------------------------------------	-------------	--

		R: Gray Parrot, <i>Psittacus erithacus</i>	Psittacidae	
--	--	--	-------------	--

**GUINEA (continued)****2013 April 30****A\***

A sheet with three stamps and a SS with one stamp.

N/A	10000fr	Secretarybird, <i>Sagittarius serpentarius</i>	Accipitridae	
N/A	15000fr	White-backed Vulture, <i>Gyps africanus</i>	Accipitridae	
N/A	20000fr	Jerdon's Baza, <i>Aviceda jerdoni</i>	Accipitridae	Vol.62(3)
N/A	SS 40000fr	Crested Eagle, <i>Morphnus guianensis</i>	Accipitridae	
	Margin	Steller's Sea-Eagle, <i>Haliaeetus pelagicus</i>	Accipitridae	

**2013 August 8****A\***

A strip of four stamps of an eagle, which was also printed with a sheet of two sets of the four and a sheet with four sets of the four and a SS. This set has the WWF panda emblem on each stamp.

N/A	15000fr	Martial Eagle, <i>Polemaetus bellicosus</i> (standing on killed prey)	Accipitridae	
N/A	15000fr	Same bird (♂ & ♀)	Accipitridae	
N/A	15000fr	Same bird (one bird in flight)	Accipitridae	
N/A	15000fr	Same bird (bird on nest with newborn)	Accipitridae	

**LATVIA****2013 June 7****A\***

Two stamps depicting birds. Designer: Girts Griva. Offset by Baltijas Banknote.

833	35s	Long-tailed Duck, <i>Clangula hyemalis</i>	Anatidae	
834	98s	European Bee-eater, <i>Merops apiaster</i>	Meropidae	

**MALAYSIA****2013 January 13****A\***

An issue featuring three stamps and a SS of woodpeckers. Designer: Reign Associates. Offset by Percetakan Keselamatan.

1443	60s	Banded Woodpecker, <i>Picus miniaceus</i>	Picidae	Vol.62(1)
1444	80s	Common Flameback, <i>Dinopium javanense</i>	Picidae	
1445	1r	Lesser Yellownape, <i>Picus chlorolophus</i>	Picidae	Vol.62(1)
1446	SS 5r	White-bellied Woodpecker, <i>Dryocopus javensis</i>	Picidae	

**MARSHALL ISLANDS****2013 March 9****A\***

Birds of the World, Part 2. A pane of ten se-tenant stamps. Designer: Chuck Ripper. Offset by Pioneer Printing.

1056a	46c	Hadada Ibis, <i>Bostrychia hagedash</i>	Threskiornithidae	
1056b	46c	White-faced Whistling-Duck, <i>Dendrocygna viduata</i>	Anatidae	
1056c	46c	Scarlet Ibis, <i>Eudocimus ruber</i>	Threskiornithidae	
1056d	46c	Fulvous Whistling-Duck, <i>Dendrocygna bicolor</i>	Anatidae	
1056e	46c	Comb Duck, <i>Sarkidiornis melanotos</i>	Anatidae	
1056f	46c	Egyptian Goose, <i>Alopochen aegyptiaca</i>	Anatidae	
1056g	46c	Baikal Teal, <i>Anas formosa</i>	Anatidae	
1056h	46c	Humboldt Penguin, <i>Spheniscus humboldti</i>	Spheniscidae	
1056i	46c	Whooping Crane, <i>Grus americana</i>	Gruidae	
1056j	46c	Red-breasted Goose, <i>Branta ruficollis</i>	Anatidae	

**2013 May 13****A\***

Birds of the World, Part 3. A pane of ten se-tenant stamps. Designer: Chuck Ripper. Offset by Pioneer Printing.

1057a	46c	American Flamingo, <i>Phoenicopterus ruber</i>	Phoenicopteridae	
1057b	46c	Dalmatian Pelican, <i>Pelecanus crispus</i>	Pelecanidae	
1057c	46c	Piping Plover, <i>Charadrius melodus</i>	Charadriidae	
1057d	46c	Coscoroba Swan, <i>Coscoroba coscoroba</i>	Anatidae	
1057e	46c	Hawaiian Goose, <i>Branta sandvicensis</i>	Anatidae	



**MARSHALL ISLANDS** (continued)

1057f	46c	Brown Pelican, <i>Pelecanus occidentalis</i>	Pelecanidae
1057g	46c	Jabiru, <i>Jabiru mycteria</i>	Ciconiidae
1057h	46c	Emperor Penguin, <i>Aptenodytes forsteri</i>	Spheniscidae
1057i	46c	Eurasian Spoonbill, <i>Platalea leucorodia</i>	Threskiornithidae
1057j	46c	Blue Crane, <i>Anthropoides paradiseus</i>	Gruidae

**2013 October 3****A\***

Birds of the World, Part 4. A pane of ten se-tenant stamps. Designer: Chuck Ripper. Offset by Pioneer Printing.

1058a	46c	Golden Parakeet, <i>Guaruba guarouba</i>	Psittacidae
1058b	46c	Pink Cockatoo, <i>Lophochroa leadbeateri</i>	Cacatuidae
1058c	46c	Eastern Bluebird, <i>Sialia sialis</i>	Turdidae
1058d	46c	Giant Scops-Owl, <i>Otus gurneyi</i>	Strigidae
1058e	46c	Thick-billed Parrot, <i>Rhynchopsitta pachyrhyncha</i>	Psittacidae
1058f	46c	Western Crowned-Pigeon, <i>Goura cristata</i>	Columbidae
1058g	46c	American Kestrel, <i>Falco sparverius</i>	Falconidae
1058h	46c	White-chested White-Eye, <i>Zosterops albogularis</i>	Zosteropidae
1058i	46c	St. Lucia Parrot, <i>Amazona versicolor</i>	Psittacidae
1058j	46c	California Condor, <i>Gymnogyps californianus</i>	Cathartidae

**MONGOLIA****2012 December 24****A\***

Six stamps, of various birds of the world. No designer information. Offset, no printer information.

2758	100t	R: Blue-and-yellow Macaw, <i>Ara ararauna</i> CTR: Red-and-green Macaw, <i>Ara chloropterus</i> L: Turquoise-fronted Parrot, <i>Amazona aestiva</i>	Psittacidae Psittacidae Psittacidae
2759	200t	L & CTR: Raggiana Bird-of-Paradise, <i>Paradisaea raggiana</i> R: Blue Bird-of-Paradise, <i>Paradisaea rudolphi</i>	Paradisaeidae Paradisaeidae
2760	300t	L: Black Swan, <i>Cygnus atratus</i> CTR: Mute Swan, <i>Cygnus olor</i> R: American Flamingo, <i>Phoenicopterus ruber</i> (Cap: <i>Phoenicopterus roseus</i> )	Anatidae Anatidae Phoenicopteridae
2761	400t	L: Mandarin Duck, <i>Aix galericulata</i> R: Wood Duck, <i>Aix sponsa</i>	Anatidae Anatidae
2762	800t	L: Gouldian Finch, <i>Erythrura gouldiae</i> CTR: King-of-Saxony Bird-of-Paradise, <i>Pteridophora alberti</i> (Cap: <i>Pteridophora albertus</i> ) R: Red Bishop, <i>Euplectes orix</i>	Estrildidae Paradisaeidae Ploceidae
2763	1000t	L: Indian Peafowl, <i>Pavo cristatus</i> CTR & R: Golden Pheasant, <i>Chrysolophus pictus</i>	Phasianidae Phasianidae

**2013 June 19****A\***

A pane of six se-tenant stamps of Mongolia's National bird. No designer information. Offset, but no printer information.

2770a	100t	Saker Falcon, <i>Falco cherrug</i> (single bird in flight)	Falconidae
2770b	200t	Same bird, two birds in flight	Falconidae
2770c	300t	Same bird, chicks and owls	Falconidae
2770d	400t	Same bird, bird on rock	Falconidae
2770e	800t	Same bird, bird & Mongolian regalia	Falconidae
2770f	1000t	Same bird, on hand of falconer	Falconidae

**MOZAMBIQUE** **2012 April 30** **A\***

A sheet of six se-tenant stamps (Sc#2613a–f) for Extinct Animals, with one stamp featuring a bird.

2613f 66m Great Auk, *Pinguinus impennis* Alcidae

**NEVIS** **2013 April 25** **A\***

A pane of four se-tenant stamps and a SS, all of hummingbirds. No designer listed on “New Issues” article, nor on the stamps. Offset, no printer information. The SS has two stamps.

1742a \$3.25 Antillean Mango, *Anthracothorax dominicus* Trochilidae  
 1742b \$3.25 Ruby-throated Hummingbird, *Archilochus colubris* Trochilidae  
 1742c \$3.25 Purple-throated Carib, *Eulampis jugularis* Trochilidae  
 1742d \$3.25 Long-billed Starthroat, *Heliomaster longirostris* Trochilidae  
 1743a SS \$4.50 Green-throated Carib, *Eulampis holosericeus* Trochilidae  
 1743b SS \$4.50 Tufted Coquette, *Lophornis ornatus* Trochilidae

**2013 June 3** **A\***

Parrots of the Caribbean. Offset, no printer information, nor designer information. The set consists of a pane of four and a SS. The stamps Sc#1750a, b, d, & Sc#1751 are captioned Amazon instead of parrot.

1750a \$3.25 Imperial Parrot, *Amazona imperialis* Psittacidae  
 1750b \$3.25 Cuban Parrot, *Amazona leucocephala* Psittacidae  
 1750c \$3.25 Hispaniolan Parrot, *Amazona ventralis* Psittacidae  
 1750d \$3.25 St. Vincent Parrot, *Amazona guildingii* Psittacidae  
 1751 SS \$9.00 St. Lucia Parrot, *Amazona versicolor* Psittacidae

**NEW CALEDONIA** **2013 March 7** **A\***

A single stamp for UNESCO World Patrimony/Lagoons of New Caledonia, Reef Diversity and Associated Ecosystems Emblem. Designer: Jean Richard Lisiak. Offset by Philapost.

1150 110fr Masked Booby, *Sula dactylatra* Sulidae

**NICARAGUA** **2012 September 6** **A\***

A pane of six se-tenant stamps (Sc#2533a–f) of flora and fauna of the San Juan River, with two stamps featuring birds. No designer information. Offset, no printer information.

2533e 14cor Steely-vented Hummingbird, *Amazilia saucerrottei* Apodidae Vol. 62(1)  
 2533 50cor Great Egret, *Ardea alba* Ardeidae

**ST. MARTIN** **2012 December 12** **A\***

Twelve se-tenant stamps, all birds. Designer: Studio LaBranda. Offset by Austrian Government Printing Office.

35a 10c Plain-bellied Emerald, *Amazilia leucogaster* Trochilidae  
 35b 30c Whitely's Toucanet, *Aulacorhynchus whitleianus* Ramphastidae  
 (This is a subspecies of Chestnut-tipped Toucanet, *Aulacorhynchus derbianus*, which is the scientific name on the stamp)  
 35c 50c Great Horned Owl, *Bubo virginianus* Strigidae  
 35d 75c Great Jacamar *Jacamerops aureus* (Cap: *J. aurea*) Galbulidae  
 35e 100c Black-necked Aracari, *Pteroglossus aracari* Ramphastidae  
 35f 150c Racket-tailed Coquette, *Discosura longicaudus* Trochilidae  
 35g 175c Bicolored Hawk, *Accipiter bicolor* Accipitridae  
 35h 200c Pearl Kite, *Gampsonyx swainsonii* Accipitridae  
 35i 240c Gray-headed Kite, *Leptodon cayanensis* Accipitridae  
 35j 300c Crimson Topaz, *Topaza pella* Trochilidae  
 35k 350c Gartered Trogon, *Trogon caligatus* Trogonidae  
 35l 400c Spangled Cotinga, *Cotinga cayana* Cotingidae

**ST. THOMAS & PRINCE ISLANDS 2010 December 1****A\***

Scott Publishing has assigned numbers to all issues for the year 2010 (88 panes or sheets and 76 SS), which is absurd for a small island. Only two of the sheets show birds and one set has not been seen by me or Kjell Sharning in Norway, nor was I able to locate it at some dealers that sell stamp of St. Thomas. The first sheet, not seen, is a sheet of ten stamps (Sc#2353a–j) depicting six birds and four butterflies.

2353a	10000d	Black-capped Speirops, <i>Zosterops lugubris</i>	Zosteropidae
2353b	10000d	U/I sp.	
2353c	15000d	Giant Weaver, <i>Ploceus grandis</i> (facing right)	Ploceidae
2353d	15000d	U/I parrot species facing left (Scott incorrectly identifies this as <i>Ploceus grandis</i> )	Psittacidae
2353f	20000d	São Tomé Green-Pigeon, <i>Treron sanctithomae</i>	Columbidae
2353i	25000d	São Tomé Oriole, <i>Oriolus crassirostris</i>	Oriolidae

This sheet of four stamps shows a pane displaying the obverse and reverse sides of banknotes.

2339a	10000d	Principe Glossy-Starling, <i>Lamprotornis ornatus</i>	Sturnidae
2339b	15000d	Brown-hooded Kingfisher, <i>Halcyon albiventris</i>	Alcedinidae
2339c	20000d	Sao Tome Oriole, <i>Oriolus crassirostris</i>	Oriolidae
2339d	25000d	African Emerald Cuckoo, <i>Chrysococcyx cupreus</i>	Cuculidae

**SOUTH AFRICA****2013 June 14****A\***

A SS with two se-tenant, self-adhesive, non-denominated “B4” lenticular stamps. Photographer: Chris Van Rooyen. Lenticular Printing.

1495a	(6.90r)	African Fish-Eagle, <i>Haliaeetus vocifer</i> (facing right)	Accipitridae
1495b	(6.90r)	Same bird, facing left	

**SURINAME****2013 June 19****A\***

A pane of six stamps (Sc#1453a–f) for the Bangkok 2013 Stamp Exhibition, with two stamps featuring birds. Designer: Studio LaBranda. Offset by Austrian Government Printing Office.

1453c	\$5.50	Siamese Fireback, <i>Lophura diardi</i>	Phasianidae
1453d	\$7.50	Channel-billed Toucan, <i>Ramphastos vitellinus</i>	Ramphastidae

**TOGO****2013**

I last listed the issues from this country in the journal of March 2013, Vol. 62(1). At that time I listed the years 2010–2012, which still have not been listed by Scott Publishing. The following are issues for 2013.

**2013 January 1****B\***

A pane of four se-tenant stamp and a SS of Birds in Painting. The second stamp shows 11 identifiable birds.

N/A	750fr	UL: Gray Parrot, <i>Psittacus erithacus</i>	Psittacidae
		LL: Eurasian Bullfinch, <i>Pyrrhula pyrrhula</i>	Fringillidae
		LR: Great Tit, <i>Parus major</i>	Paridae
N/A	750fr	LL: Great White Pelican, <i>Pelecanus onocrotalus</i>	Pelecanidae
		LL: Eurasian Teal, <i>Anas crecca</i>	Anatidae
		Bot: Common Merganser, <i>Mergus merganser</i>	Anatidae
		LR: Red-breasted Goose, <i>Branta ruficollis</i>	Anatidae
		LR: Eurasian Wigeon, <i>Anas penelope</i>	Anatidae
		MR: Smew, <i>Mergellus albellus</i>	Anatidae
		MR: Egyptian Goose, <i>Alopochen aegyptiaca</i>	Anatidae
		UL: Southern Cassowary, <i>Casuarus casuarus</i>	Casuariidae
		UL: American Flamingo, <i>Phoenicopterus ruber</i>	Phoenicopteridae
		CTR: Black-crowned Crane, <i>Balearica pavonina</i>	Gruidae
		MR: Sarus Crane, <i>Grus antigone</i>	Gruidae

**TOGO** (continued)

N/A	750fr	U/I parrot species	Psittacidae
N/A	750fr	Ruby-throated Hummingbird, <i>Archilochus colubris</i>	Trochilidae
N/A	SS 2000fr	L: Eurasian Jay, <i>Garrulus glandarius</i>	Corvidae
		CTR: Common Ringed Plover, <i>Charadrius hiaticula</i>	Charadriidae
		R: Northern Lapwing, <i>Vanellus vanellus</i>	Charadriidae
	Margin	13 other birds	

**2013 February 4****A\***

A pane of four se-tenant stamps titled, "Animals of China," but only one stamp features a bird. Offset, no printer information.

N/A	450fr	Red-crowned Crane, <i>Grus japonensis</i>	Gruidae
-----	-------	---	---------

**2013 March 1****A\***

A sheet of four se-tenant stamps and a SS of Indigobirds. I have no "New Issues" article for this set.

N/A	750fr	Jambandu Indigobird, <i>Vidua raricola</i>	Viduidae	Vol.62(2)
N/A	750fr	Cameroon Indigobird, <i>Vidua camerunensis</i>	Viduidae	Vol.62(2)
N/A	750fr	Quailfinch Indigobird, <i>Vidua nigeriae</i>	Viduidae	Vol.62(2)
N/A	750fr	Baka Indigobird, <i>Vidua larvaticola</i>	Viduidae	Vol.62(2)
N/A	SS 2500fr	Pale-winged Indigobird, <i>Vidua wilsoni</i>	Viduidae	Vol.62(2)
	Margin	Village Indigobird, <i>Vidua chalybeate</i>	Viduidae	

A sheet of four se-tenant stamps and a SS of hornbills.

N/A	750fr	African Gray Hornbill, <i>Tockus nasutus</i>	Bucerotidae	
N/A	750fr	Black-casqued Hornbill, <i>Ceratogymna atrata</i>	Bucerotidae	
N/A	750fr	Piping Hornbill, <i>Ceratogymna fistulator</i>	Bucerotidae	Vol.62(2)
N/A	750fr	Black-and-white-casqued Hornbill, <i>Ceratogymna subcylindrica</i>	Bucerotidae	
N/A	SS 2500fr	Northern Red-billed Hornbill, <i>Tockus erythrorhynchus</i>	Bucerotidae	
	Margin	Black Dwarf Hornbill, <i>Tockus hartlaubi</i>	Bucerotidae	<b>new</b>

A sheet of four se-tenant stamps and a SS of flamingos.

N/A	750fr	Greater Flamingo, <i>Phoenicopterus roseus</i>	Phoenicopteridae	
N/A	750fr	L: Greater Flamingo, <i>Phoenicopterus roseus</i>	Phoenicopteridae	
		R: Lesser Flamingo, <i>Phoenicopterus minor</i>	Phoenicopteridae	
N/A	750fr	L: American Flamingo, <i>Phoenicopterus ruber</i>	Phoenicopteridae	
		R: Greater Flamingo, <i>Phoenicopterus roseus</i>	Phoenicopteridae	
N/A	750fr	L: American Flamingo, <i>Phoenicopterus ruber</i>	Phoenicopteridae	
		R: Greater Flamingo, <i>Phoenicopterus roseus</i>	Phoenicopteridae	
N/A	SS 2500fr	Chilean Flamingo, <i>Phoenicopterus chilensis</i>	Phoenicopteridae	
		Lesser Flamingo, <i>Phoenicopterus minor</i>	Phoenicopteridae	

A sheet of four se-tenant stamps and a SS of eagles.

N/A	750fr	L: Long-crested Eagle, <i>Lophaetus occipitalis</i>	Accipitridae	
		R: Tawny Eagle, <i>Aquila rapax</i>	Accipitridae	
N/A	750fr	Short-toes Eagle, <i>Circaetus gallicus</i>	Accipitridae	
N/A	750fr	African Hawk-Eagle, <i>Aquila spilogaster</i>	Accipitridae	
N/A	750fr	Brown Snake-Eagle, <i>Circaetus cinereus</i>	Accipitridae	
N/A	SS 2500fr	L: Egyptian Goose, <i>Alopochen aegyptiaca</i>	Anatidae	
		R: Martial Eagle, <i>Polemaetus bellicosus</i>	Accipitridae	
	Margin	LL: African Fish-Eagle, <i>Haliaeetus vocifer</i>	Accipitridae	
		R: Long-crested Eagle, <i>Lophaetus occipitalis</i>	Accipitridae	

**UNITED STATES****2013 November 19****A\***

The USPS issued 20 Forever stamps (Sc#4825–44) depicting scenes from the Harry Potter movies, but only one stamp features a bird. The stamps were issued in booklet panes of four and in self-adhesive format. Designed by Greg Breeding. Printed Lithographed by Ashton Potter, Ltd.

4380 (46c) Snowy Owl, *Bubo scandiacus* Strigidae  
 4382a Same bird, in bklt pane of 4 (Sc#4829–32) with a central label.

**NEW HUMMINGBIRD STAMP**

The U.S. Postal Service issued a new definitive stamp on 7 February 2014, showing a stylized, digital image of a hummingbird. The 34c stamps will pay the new postcard rate that went into effect on 26 January 2014. The stamps are self-adhesive (what the USPS calls pressure-sensitive adhesive, or PSA) and are available in two formats. One format is a pane of 20 stamps and the other is a coil roll of 100.

The illustrator for the stamp was New York artist Nancy Stahl. The designer was Carl T. Herrman. Both formats were produced using five-color offset printing by Ashton Potter. The image also contains “USPS” microprinting. The total print quantity for the 20-stamp panes was 100 million. The print quantity for the coil stamps was 400 million.

Hummingbirds are among the smallest birds. In fact, the Bee Hummingbird (*Mellisuga helenae*) is the smallest living bird species weighing less than two grams (0.07 oz) and measuring less than six centimeters (2.4 in). Hummingbirds get their common name from the humming sound made by their rapidly flapping wings, which can beat at up to 80 times per second. They are the only group of birds with the ability to fly backwards.



This is not the first hummingbird stamp issued by the USPS. In 1992, they issued a booklet pane of five different species (Sc#2642–46). And in 2007, they featured a hummingbird in the set of four stamps depicting pollinators (Sc#4153–56).



## NEW BIRDS IN THE PHILATELIC AVIARY

Charles E. Braun, BU1364

### Corrections

Black-bellied Cuckoo was previously on a 100-franc issue from Mali in 1995.

### New Birds



**ROYAL SPOONBILL, *Platalea regia*** Threskiornithidae  
Solomon Islands, 2013 August 30, not yet cataloged, \$35 SS (Previously on a local from Rainbow Creek, 1982, \$1)

Length: 30 to 32 inches. Sexes alike, disperses. White with black tail, legs, head and curved spatulate bill.

Habitat: Freshwater wetlands and sheltered marine habitats.

Range: Java to the Solomon Islands, eastern Australia and New Zealand.

Disperses mainly throughout northern and eastern Australia.

Reference: del Hoyo, J., A. Elliott, and J. Sargatal, Eds. Handbook of the Birds of the World, Volume 1.



**GLOSSY BLACK-COCKATOO, *Calyptorhynchus lathami*** Cacatuidae  
St. Thomas and Prince, 2013 September 10, not yet cataloged, 96000d SS

Length: 18 to 20 inches, resident. The male (shown) is brownish black with a large red patch at the base of the tail. The female has additional yellow patches on the head and neck.

Habitat: Coastal forest and open woodland.

Range: Southeastern Australia and Kangaroo Island.

Reference: del Hoyo, J., A. Elliott, and J. Sargatal, Eds. Handbook of the Birds of the World, Volume 4.

**FINSCH'S PYGMY-PARROT, *Micropsitta finschii*** Psittacidae  
Solomon Islands, 2013, aerogramme (Illustration not yet available)

Length: 3.65 inches, resident. The male is green, paler below with a yellow undertail. The female is pink around the base of the lower mandible.

Habitat: Forest and clearings.

Range: New Hanover to the Solomon Islands.

Reference: del Hoyo, J., A. Elliott, and J. Sargatal, Eds. Handbook of the Birds of the World, Volume 4.



**RUSTY-BARRED OWL, *Strix hylophila*** Strigidae  
Burundi, 2012 December 21, Sc#1225, 7500fr SS (UL margin)

Length: 14 inches, sexes alike, resident, barred brown above and barred white below with a rusty-brown facial disk with concentric rings.

Habitat: Evergreen forest with undergrowth.

Range: Central Paraguay to southeastern Brazil.

Reference: del Hoyo, J., A. Elliott and J. Sargatal, Eds. Handbook of the Birds of the World, Volume 5.



**GOLDEN NIGHTJAR, *Caprimulgus eximius*** Caprimulgidae  
Niger, 2013 September 30, not yet cataloged, 750fr (left-hand bird)

Length: 9 to 10 inches, sexes similar, resident. Tawny-buff with black-and-white spots.

Habitat: Open semi-desert areas.

Range: Northern Senegal to central Sudan.

Reference: del Hoyo, J., A. Elliott, and J. Sargatal, Eds. Handbook of the Birds of the World, Volume 5.



**RUFOUS-CRESTED COQUETTE, *Lophornis delattrei*** Trochilidae  
St. Kitts, 2013, not yet cataloged, \$2.50 (Previously on a local from Bernera.)

Length: 2.7 inches, resident. The male (shown) is green with a bushy rufous crest and a narrow white band across the rump. The female lacks the crest and has a spotted neck.

Habitat: Open areas near trees and bushes.

Range: Southwestern Costa Rica to northern Bolivia.

Reference: del Hoyo, J., A. Elliott, and J. Sargatal, Eds. Handbook of the Birds of the World, Volume 5.



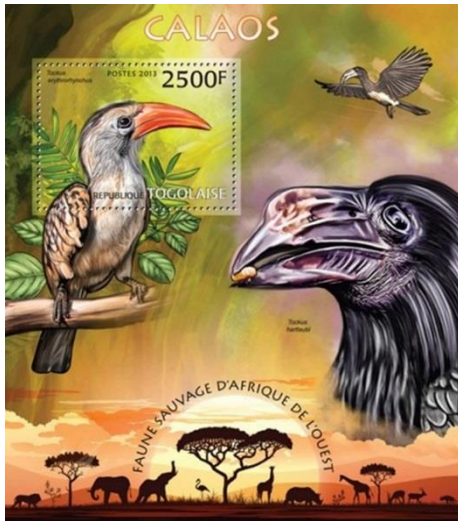
**BLACK-CRESTED COQUETTE, *Lophornis helenae*** Trochilidae  
St. Kitts, 2013, not yet cataloged, \$2.50

Length: 2.7 inches, resident. The male (shown) is green with a black hair-like crest, bronzy-spotted belly, and whitish band on the rump. The female lacks the crest and has a bronzy-spotted throat.

Habitat: Semi-open habitats.

Range: Southern Mexico to eastern Costa Rica.

Reference: del Hoyo, J., A. Elliott, and J. Sargatal, Eds. Handbook of the Birds of the World, Volume 5.



**BLACK DWARF HORNBILL, *Tockus hartlaubi*** Bucerotidae  
Togo, 2013 March 1, not yet cataloged, 2500fr SS (LR margin)

Length: 13 inches, resident. The male (shown) is black with a white band from the eye to the neck and a black and red casque. The female has no red in the casque.

Habitat: Forest sub-canopy.

Range: Southern Sierra Leone to western Uganda and northwestern Angola.

Reference: del Hoyo, J., A. Elliott, and J. Sargatal, Eds. Handbook of the Birds of the World, Volume 6.



**BAR-TAILED LARK. *Ammomanes cinctura*** Alaudidae  
Niger, 2013 September 30, not yet cataloged, 750fr (right-hand bird)

Length: 5.5 inches, sexes alike, resident. Gray to tawny-rufous above and pale below with a black bar on the tail.

Habitat: Desert and semi-desert.

Range: Cape Verde to southern Pakistan.

Reference: del Hoyo, J., A. Elliott, and J. Sargatal, Eds. Handbook of the Birds of the World, Volume 9.



**BLACK LARK, *Melanocoryphus yeltoniensis*** Alaudidae  
Kazakhstan, 2013 December 25, not yet cataloged, 150t

Length: 8 inches, migratory. The male (shown) is black with a white bill. The female is brownish gray above and whitish below with streaking.

Habitat: Steppe.

Range: Breeds from southwestern Russia to Lake Balkhash in Siberia. Winters from the Black Sea to the Caspian and southern Kazakhstan.

Reference: del Hoyo, J., A. Elliott, and J. Sargatal, Eds. Handbook of the Birds of the World, Volume 9.



## FRESH EGGS: JUST OUT THE BACK DOOR

Dawn Hamman, BU1831

Keeping chickens has become a popular hobby throughout the United States in recent years. People on farms and in rural areas have always kept chickens, but now the hobby has spread to urban areas as well. It has become trendy for urban professionals to keep a few chickens, and nearly every large city allows it.

Why have millions of people decided to raise chickens? The new push to keep backyard flocks is part of the emphasis on refitting ourselves as locavores—those who eat as much locally grown food as possible. In this age of genetically modified food, isn't it great to think that we can raise and grow food for our families? With that in mind, urbanites have carved out spaces in small yards for vegetable gardens and chicken coops.

There is nothing as delicious as a fresh egg collected and cooked in the morning. Eggs are the perfect protein food, and those from a home flock are the best. But there are other reasons for keeping chickens. They will eat your food leftovers—wilted lettuce, celery tops, etc., thus reducing the amount of food that goes to a landfill. If you are able to give them “free range” of your yard, they will munch weeds, grass, and insects.

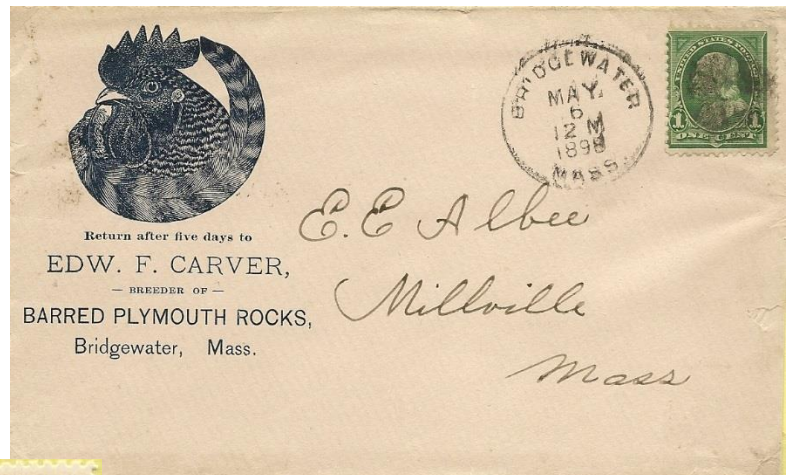
Children love chickens and learn the importance of routines and obligations when caring for them. Chicken keeping is easy. After the coop and run (open caged area for exercise) are in place, they need only food and water on a daily basis, and bedding replenished weekly. Today's breeds have few health problems.

Perhaps most of all, watching chickens is fun and relaxing. After a busy day at the computer screen, the simple act of tossing some feed and watching hens come running allows us to experience the joy in simple things.

Codes in most cities prohibit the keeping of roosters. There is no doubt that roosters, with their plumage, are magnificent creatures, but they can be aggressive and they are noisy. Hens get along fine on their own, so most people choose only hens.

Keeping chickens declined after World War II, as “modern” people embraced supermarket shopping. Breeds were developed for commercial poultry operations, and some traditional breeds were in danger of extinction. Fortunately, that is now being reversed, as hatcheries are selling breeds that have been around for centuries. Let us look at a few popular breeds.

The **Plymouth Rock** is an American original. The most popular breed in the world was developed in New England in the middle of the 19th Century. The Barred Plymouth Rock has distinctive black and white bars, or stripes. There are also white, black, buff, and silver Plymouth Rocks. In addition to their prolific laying, they are docile and friendly. They can tolerate all kinds of weather and have few health problems.



Plymouth Rock  
Poster Stamp



Plymouth Rock  
Romania Sc#1558

Barred Plymouth Rock  
Advertising Cover

The **Orpington**, a big, hardy breed was developed in Orpington, Kent, United Kingdom. It is very popular in the U.K., France, and the U.S., as it provides large, brown eggs. The most popular is the Buff Orpington, which is prized for its beautiful gold color.



Rhode Island Red  
US Sc#1991b



Rhode Island Red  
Bophuthatswana Sc#284



Buff Orpington & Chicks  
Montserrat Sc#764



Buff Orpington  
Uruguay Sc#1911b

Known for its prolific egg-laying, the **Rhode Island Red**, is also popular because it is friendly, intelligent, and hardy in most climates. It is the state bird of Rhode Island.

Prospective urban chicken-keepers have myriad books, videos, and websites available for information on how to get started, choose breeds, and manage day-to-day. For those who would like a no-obligation trial, there is *Rent the Chicken*, a business that will rent a pair of hens, coop, and food from May to November for \$350.

RIDE 'EM

This is the Year of the Horse in the Chinese lunar year cycle. Get ready for a stampede of horse issues this year. Last year, the snakes were bad enough. But horses are way more popular subjects than snakes, so I expect to see equine stamps from almost every postal issuing authority and from others of doubtful authority as well.

These issues started to appear late last year. I have not attempted to count the quantity so far, but it is a significant number.

On 6 January 2014, Tonga issued a MS of four different designs depicting a thoroughbred horse to commemorate the lunar year. The designer was Alison Ditko. I was unable to find any printer or production information for this set.

It is interesting that most of the few horses in Tonga are draft animals used in farming.





# ICHTHYOLOGY

Editor

Kris P. Lindstrom, LM77



## New Listings

Scott#	Denom	Common Name/Scientific Name	Family/Subfamily	Code
<b>ARGENTINA</b>		<b>2013 March 23</b> (National Trout Festival)		
2675	3.50p	Trout	Salmonidae	S
<b>ASCENSION</b>		<b>2013 August 29</b> (Shallow Marine Surveys Group)		
Set of four with white frames and strip of four without white frames. Sc#1099 and 1103a show a fire worm. This issue also includes a SS containing three £1 stamps, all depicting marine invertebrates, from Ascension, Falkland Islands, and South Georgia & South Sandwich Islands.				
1100	50p	Black-barred Soldierfish, <i>Myripristis jacobus</i>	Holocentridae	A*
1101	60p	Endemic White Hawkfish, <i>Amblycirrhitus earnshawi</i>	Cirrhitidae	A*
1102	£1.45	Atlantic Blue Tang, <i>Acanthurus coeruleus</i>	Acanthuridae	A*
1103b	50p	Black-barred Soldierfish, <i>Myripristis jacobus</i>	Holocentridae	A*
1103c	60p	Endemic White Hawkfish, <i>Amblycirrhitus earnshawi</i>	Cirrhitidae	A*
1103d	£1.45	Atlantic Blue Tang, <i>Acanthurus coeruleus</i>	Acanthuridae	A*
1103		Strip of 4 (Sc#1103a–d) (w/o white frames)		
1104		SS of 3 (Sc#1104a, Falklands Sc#1107a, & South Georgia Sc#485a)		
	Margin	LR: U/I reef fishes (with coral)		U Z
<b>AUSTRALIA</b>		<b>2013 August 20</b> (Coral Reefs)		
3974	60c	U/I fish (underwater view Ningaloo Reef) (perf 14½×14)		U
3974a	60c	Same (perf 13½×14)		U
3975	60c	U/I fish (underwater view Great Barrier Reef) (perf 14½×14)		U
3975a		Horiz pair (Sc#3974–75)		
3975b	60c	Same (perf 13½×14)		U
3977c		SS of 4 (Sc#3974a, 3975b, 3976a, 3977b)		
	Margin	L & LL: U/I reef fish		Z
		Bot: U/I reef fish		Z
		UR: Angelfish		Z
		LR: U/I reef fish		Z
3978	60c	U/I fish (underwater view Ningaloo Reef) (die cut 10½)		U
3979	60c	U/I fish (underwater view Great Barrier Reef) (die cut 10½)		U
3979a		Bklt pane 20 (10ea Sc#3978–79)		
<b>BOSNIA &amp; HERZEGOVINA</b>		<b>2012 November 27</b> (Marine Life)		
696a	70pf	Various fish (9 species)		U
696b	70pf	Seahorse and other fish		U
696d	70pf	Crab and fish		U
696e	70pf	Jellyfish and fish		U
696		Horiz strip 5 (Sc#696a–e)		

<b>BOTSWANA</b>		<b>2012 (Myths and Legends)</b>		
932	4.10p	Stylized fish (Tumtumbolosa)		S
<b>BURUNDI</b>		<b>2012 October 15 (Greenland Shark)</b>		
1168a	1180fr	Greenland Shark, <i>Sominiosus microcephalus</i>	Somniosidae	A
1168b	1190fr	Greenland Shark, <i>Sominiosus microcephalus</i>	Somniosidae	A
1168c	3000fr	Greenland Shark, <i>Sominiosus microcephalus</i> (diagonal LL-UR)	Somniosidae	A
1168d	3000fr	Greenland Shark, <i>Sominiosus microcephalus</i> (diagonal UL-LR)	Somniosidae	A
1168		MS of 4 (Sc#1168a-d)		
1187	SS 7500fr	Greenland Shark, <i>Sominiosus microcephalus</i>	Somniosidae	A
		<b>2012 December 21 (Goldfish Breeds)</b>		
1208a	1180fr	Panda Moor Goldfish, <i>Carassius auratus</i>	Cyprinidae	A
1208b	1190fr	Celestial Eye Goldfish, <i>Carassius auratus</i>	Cyprinidae	A
1208c	3000fr	Bubble Eye Goldfish, <i>Carassius auratus</i>	Cyprinidae	A
1208d	3000fr	Black Moor Goldfish, <i>Carassius auratus</i>	Cyprinidae	A
1208		MS of 4 (Sc#1208a-d)		
1209a	1180fr	Rainbow Krib, <i>Pelvicachromis pulcher</i>	Cichlidae	A
1209b	1190fr	<i>Neochromis omnicaeruleus</i>	Cichlidae	A
1209c	3000fr	<i>Ptyochromis (Haplochromis) sp.</i>	Cichlidae	A
1209d	3000fr	<i>Paralabidochromis (Haplochromis) sp.</i>	Cichlidae	A
1209		MS of 4 (Sc#1209a-d)		
1233	SS 7500fr	Pearlscale Goldfish, <i>Carassius auratus</i>	Cyprinidae	A
1234	SS 7500fr	<i>Lithochromis rufus</i>	Cichlidae	A
		<b>2013 August 20 (Fish)</b>		
1383a	90fr	Pajama Cardinal Fish, <i>Sphaeramia nematoptera</i>	Apogonidae	A
1383b	1190fr	Banggai Cardinal Fish, <i>Pterapogon kauderni</i>	Apogonidae	A
1383c	3000fr	Orange-lined Triggerfish, <i>Balistapus undulatus</i>	Balistidae	A
1383d	3000fr	Mandarinfish, <i>Synchiropus splendidus</i>	Callionymidae	A
1383		MS of 4 (Sc#1383a-d)		
1408	SS 7500fr	Fire Goby, <i>Nemateleotris magnifica</i>	Microdesmidae	A
<b>CANADA</b>		<b>2013 September 30 (Children's Art by Ezra Peters)</b>		
B20	63c+10c	Stylized fish		S
B20a		Bklt pane 10 (Sc#B20) (s/a, die cut 13×12½)		
<b>CHINA P. R.</b>		<b>2013 June 1 (Tadpoles and Pond Life)</b>		
4114b	\$1.20	Stylized goldfish (with tadpoles)		S
4114f		Bklt pane 5 (Sc#4114a-e)		
4114		Horiz strip 5 (Sc#4114a-e)		
<b>COOK ISLANDS</b>		<b>2013 February 20 (Cook Islands Marine Life) (Set of 6)</b>		
1431	80c	Sergeant Major and various reef fishes		U A
1432	80c	Angelfish and various reef fishes		U A
1433	90c	Red reef fishes		U A
1435	90c	Purple-striped reef fish		U A
<b>CUBA</b>		<b>2012 September 26 (Diplomatic Relations)</b>		
5319	75c	Stylized angelfish silhouettes (7) with various flag patterns		S

**DOMINICA****2013 September 2** (Painting of Marine Life)

These are rather crude, unrealistic depictions. The other stamps in the sheet show coral and marine invertebrates.

2795c	65c	Spotted Eagle Ray, <i>Aetobatus narinari</i>	Myliobatidae	S
2795d	65c	Gold-spotted Cowfish?		S
2795		MS of 7 (Sc#2795a–g)		

**ECUADOR****2012 November 29** (Guayas Tourism)

2090c	75c	Stylized fish silhouette (with fishermen in boats)		S
2090		MS of 6+2 labels (Sc#2090a–f)		

**2013 January 16** (Galapagos Islands Type of 2012)

2094c	50c	Galapagos shark, <i>Carcharhinus galapagensis</i>	Carcharhinidae	A*
2094e	75c	Angelfish, <i>Pterophyllum scalare</i>	Cichlidae	A*
2094		Bklt pane 8 (Sc#2094a–h) (s/a)		
2095g	\$1	Red reef fish		U*
2095		Bklt pane 8 (Sc#2095a–h) (s/a)		

**EGYPT****2013 June 5** (World Environment Day)

2098	£3	Stylized (World Environment Day logo)		S
------	----	---------------------------------------	--	---

**FALKLAND ISLANDS****2013 August 29** (Shallow Marine Surveys Group)

1107		SS of 3 (Sc#1107a, Ascension Sc#1104a, & South Georgia Sc#485a)		
	Margin	LR: U/I reef fishes (with coral)		U Z

**FAROE ISLANDS****2013 September 23** (Nordafar Fishery - Foroyinghavn)

609a	9k	Fishing boat (no fish)		R
609b	9k	Fishermen on dock (no fish)		R
609c	9k	Fishing boats (no fish)		R
609		SS of 3 (Sc#609a–c)		

**FIJI****2013 October 30** (Mangrove Protection) (Set of 4)

1298	\$1.20	Fish (with underwater mangrove root system)		U
------	--------	---	--	---

**FRANCE****2013 September 6** (French Heritage) (Set of 12)

4476	(58c)	Stylized fish (Mosaics of Montcaret Archaeological Site)		S
4477a		Bklt pane 4 (Sc#4474–77)		

**FRENCH POLYNESIA****2013 June 7** (Marine Life)

1103	75fr	Clown Fish, <i>Amphiprion</i> sp.	Pomacentridae	A*
		MS of 4 (Sc#1101–04)		
	Margin	UL: Arabian Angelfish, <i>Pomacanthus asfur</i>	Pomacanthidae	A Z
		CTR: Emperor Angelfish, <i>Pomacanthus imperator</i>	Pomacanthidae	A Z
		UR: U/I sea bass		U Z
		LR: U/I tiny reef fish		U Z

**GIBRALTAR****2013 September 14** (Endangered Animals Type of 2011)

1406	42p	Atlantic Blue-finned Tuna, <i>Thunnus thynnus</i>	Scombridae	A*
1410a		SS of 6 (Sc#1405–10)		

**KUWAIT****2012 November** (Children's Art)

1723k	50f	Stylized yellow fish		S
1723p	50f	Stylized blue fish		S
1723		MS of 20 (Sc#1723a–t)		

<b>MARSHALL ISLANDS</b>		<b>2013 January 28</b> (Marine Life Type of 2013)		
1053	\$44.95	Grouper, U/I sp.	Serranidae	U A*
<b>MONTENEGRO</b>		<b>2012 May 14</b> (Tourism)		
310	95c	Stylized seahorse		S
310a		MS of 4 (Sc#307–10)		
	Margin	UL: Stylized seahorse		S
<b>PERU</b>		<b>2013 August 2</b> (World Record Marlin Catch 60th anniv.) (Set of 2)		
1812	2.50s	Black Marlin, <i>Istiompax indica</i>	Istiophoridae	A
<b>ST. THOMAS &amp; PRINCE IS.</b>		<b>2010 September 2</b> (Intl. Year of Biodiversity)		
2317c	20000d	Black-finned Anemonefish, <i>Amphiprion nigripes</i> (Maldives Sc#1187 s-o-s)	Pomacentridae	B
2317		MS of 5 (Sc#2317a–e)		
2324	SS 100000d	LR: Tuna and U/I fish (WWF)		U Z
2327	SS 110000d	LL: Black-tipped Reef Shark, <i>Carcharhinus melanopterus</i> (Cocos Sc#342 s-o-s)	Carcharhinidae	Z
		<b>2010 December 1</b> (Coins) (MS of 6 & SS)		
2347a	10000d	U/I fish (on 50 centavo coin)		U
2355	SS 100000d	LR: U/I fish (on 50 centavo coin)		U Z
<b>SOUTH AFRICA</b>		<b>2013 March 22</b> (Intl. Year of Water Cooperation)		
1493e	6.30r	U/I fish		U
1493		MS of 5 (Sc#1493a–e)		
<b>SOUTH GEORGIA &amp; SOUTH SANDWICH IS.</b>		<b>2013 August 29</b> (Shallow Marine Surveys Group)		
Set of four with white frames and strip of four without white frames. The other stamps show a marine invertebrates. This issue also includes a SS containing three £1 stamps, all depicting marine invertebrates, from Ascension, Falkland Islands, and South Georgia & South Sandwich Islands.				
482	£1	Crocodile Fish, <i>Parachaenichthys georgianus</i>	Bathypodaconidae	A*
484c	£1	Crocodile Fish, <i>Parachaenichthys georgianus</i>	Bathypodaconidae	A*
484		Strip of 4 (Sc#484a–d) (w/o white frames)		
485		SS of 3 (Sc#485a, Falklands Sc#1107a, & Ascension Sc#1104a)		
	Margin	LR: U/I reef fishes (with coral)		U Z
<b>TUVALU</b>		<b>2013 July 24</b> (Fish)		
1251a	\$1.25	Blue-head wrasse, <i>Thalassoma amblycephalum</i>	Labridae	A*
1251b	\$1.25	Clownfish, <i>Amphiprion</i> sp.	Pomacanthidae	A*
1251c	\$1.25	Clown triggerfish, <i>Balistes vetula</i>	Balistidae	A*
1251d	\$1.25	Copper-banded Butterflyfish, <i>Chelmon rostratus</i>	Chaetodontidae	A*
1251		MS of 4 (Sc#1251a–d)		
1252a	\$1.25	Scribbled angelfish, <i>Chaetodontoplus duboulayi</i>	Pomacanthidae	A*
1252b	\$1.25	Flame angelfish, <i>Centropyge loriculus</i>	Pomacanthidae	A*
1252c	\$1.25	Harlequin tuskfish, <i>Choerodon fasciatus</i>	Labridae	A*
1252d	\$1.25	Flame-backed angelfish, <i>Centropyge aurantonotus</i> MS of 4 (Sc#1252a–d)	Pomacanthidae	A*
<b>URUGUAY</b>		<b>2013</b> (Farmer Workers Rights) (Set of 8, s/a)		
2418	45p	U/I fish (worker processing fish)		U R
<b>WALLIS &amp; FUTUNA ISLANDS</b>		<b>2013 January 17</b> (Ocean Garden)		
719	85fr	Stylized fish		S
720	85fr	Stylized fish		S



# HERPETOLOGY



**Jack R. Congrove, BU1424**

[Ed. Note: I am still looking for someone to take over as Associate Editor for this column. Please contact me if you can provide more complete and accurate data, and I will coordinate with you to produce future listings.]

Scott#	Denom	Common Name/Scientific Name	Family/Subfamily	Code
<b>AUSTRALIA</b>				
<b>2013 August 13 (Carnivorous Plants)</b>				
3969	60c	U/I frog sp. (with <i>Nepenthes rowanae</i> ) (perf 14¾×14)		U B
3969a	240c	Block 4 (Sc#3966–69)		
3973	60c	U/I frog sp. (with <i>Nepenthes rowanae</i> ) (die cut 11¼)		U B
3973a		Bklt pane 10 (3ea Sc#3970, 3072; 2ea Sc#3971, 3973)		
<b>2013 August 20 (Coral Reefs)</b>				
3974	60c	Green Sea Turtle, <i>Chelonia mydas</i> (perf 14½×14)	Cheloniidae	A*
3974a	60c	Green Sea Turtle, <i>Chelonia mydas</i> (perf 13½×14)	Cheloniidae	A*
3977a	SS \$3.60	Sheet 4 (Sc#3974a, 3975b, 3976a, 3977b)		
3979	60c	Green Sea Turtle, <i>Chelonia mydas</i> (die cut 10½)	Cheloniidae	A*
3979a		Bklt pane 20 (10ea Sc#3978–79)		
<b>BAHAMAS</b>				
<b>2013 October 29 (Bahamas Reef Environment Education Foundation)</b>				
	50c	U/I sea turtle (swimming left with diver)		U A*
	50c	U/I sea turtle (swimming right)		U A*
		Horiz strip of 2 with central label		
<b>BANGLADESH</b>				
<b>2013 July 30 (Endangered Animals)</b>				
818b	8t	Indian Cobra, <i>Naja naja</i>	Elapidae	A*
818	MS 36t	Sheet 4 (Sc#818a–d)		
	Margin	Indian Cobra, <i>Naja naja</i>	Elapidae	Z
818e	MS 36t	Same (ovpt with emblem of Thailand 2013 World Stamp Exhibition)		
<b>BELGIUM</b>				
<b>2013 May 13 (Opera Houses &amp; Scenes from Operas)</b>				
2639	1	Stylized frog (scene from <i>Das Rheingold</i> )		S
2643a		Bklt pane 5 (Sc#2639–43)		
<b>BOSNIA (Serbia Admin)</b>				
<b>2013 September 12 (Amphibians)</b>				
Each stamp comes with an attached label showing the head of the other species.				
	90pf	Fire Salamander, <i>Salamandra salamandra</i>	Salamandridae	A*
	1.50m	Agile Frog, <i>Rana dalmatina</i>	Ranidae	A*
<b>BOSNIA &amp; HERZEGOVINA</b>				
<b>2013 June 20 (17th Mediterranean Games)</b>				
702	1m	Stylized sea turtle		S
<b>BOTSWANA</b>				
<b>2012 (Myths and Legends)</b>				
935	6.60p	Stylized turtle (How Death Came to the World)		S

<b>BURUNDI</b>		<b>2012 December 21 (Flora and Fauna)</b>		
1211a	1180fr	Leatherback Sea Turtle, <i>Dermochelys coriacea</i>	Dermochelyidae	A*
1211b	1190fr	Loggerhead Sea Turtle, <i>Caretta caretta</i>	Cheloniidae	A*
1211c	3000fr	Flatback Sea Turtle, <i>Natator depressus</i>	Cheloniidae	A*
1211d	3000fr	Hawksbill Sea Turtle, <i>Eretmochelys imbricata</i>	Cheloniidae	A*
1211		MS of 4 (Sc#1211a–d) (Sea Turtles)		
1236	SS 7500fr	Loggerhead Sea Turtle, <i>Caretta caretta</i>	Cheloniidae	A*
	Margin	Top: Green Sea Turtle, <i>Chelonia mydas</i>	Cheloniidae	Z*
1212a	1180fr	Rock Monitor, <i>Varanus albogularis</i>	Varanidae	B*
1212d	3000fr	Egyptian Cobra, <i>Naja haje</i>	Elapidae	B*
1212		MS of 4 (Sc#1212a–d) (Cacti and Animals)		
1237	SS 7500fr	Margin: Rock Monitor, <i>Varanus albogularis</i>	Varanidae	Z*
<b>BURUNDI (continued)</b>		<b>2012 December 28 (Columbus Discovery 520th anniv.)</b>		
1269	SS 7500fr	Margin LR: U/I crocodile specimen (Tiepolo painting detail)	Crocodylidae	U Z
		<b>2013 August 20 (Fauna)</b>		
1384a	90fr	Yellow Rat Snake, <i>Elaphe obsoleta quadrivittata</i>	Colubridae	A*
1384b	1190fr	Milk Snake, <i>Lampropeltis triangulum</i>	Colubridae	A*
1384c	3000fr	Ring-necked Snake, <i>Diadophis punctatus</i>	Colubridae	A*
1384d	3000fr	Smooth Green Snake, <i>Ophedryx vernalis</i>	Colubridae	A*
1384		MS of 4 (Sc#1384a–d) (Snakes)		
1409	SS 7500fr	Gulf Crayfish Snake, <i>Regina rigida sinicola</i>	Colubridae	A*
1395a	1020fr	Black River Turtle, <i>Rhinoclemmys funerea</i>	Geoemydidae	A*
		Sulawesi Forest Turtle, <i>Leucocephalon yuwonoi</i>	Geoemydidae	A*
1395b	1190fr	Spiny Turtle, <i>Heosemys spinosa</i>	Geoemydidae	A*
1395c	3000fr	Hawksbill Sea Turtle, <i>Eretmochelys imbricata</i>	Cheloniidae	A*
1395d	3000fr	Green Sea Turtle, <i>Chelonia mydas</i>	Cheloniidae	A*
1395		MS of 4 (Sc#1395a–d) (Turtles)		
1420	SS 7500fr	Geometric Tortoise, <i>Psammobates geometricus</i>	Testudinidae	A*
<b>CURAÇAO</b>		<b>2013 April 15 (Environmental Friendly Living) (Set of 7)</b>		
115	175c	U/I lizard		U
<b>ECUADOR</b>		<b>2013 January 16 (Galapagos Islands Type of 2012)</b>		
2094d	50c	Green Sea Turtle, <i>Chelonia mydas</i>	Cheloniidae	A*
		<b>2013 July 4 (Death of Lonesome George)</b>		
2102	\$3	Pinta Island Tortoise, <i>Chelonoidis nigra abingdonii</i>	Testudinidae	A*
2103	\$25	Pinta Island Tortoise, <i>Chelonoidis nigra abingdonii</i> (imperf)	Testudinidae	A*
<b>FRENCH POLYNESIA</b>		<b>2013 June 7 (Marine Life)</b>		
1104	100fr	Green Sea Turtle, <i>Chelonia mydas</i>	Cheloniidae	A*
	SS 190fr	Sheet 4 (Sc#1101–04)		
	Margin	Top: Green Sea Turtle, <i>Chelonia mydas</i>	Cheloniidae	Z
<b>GHANA</b>		<b>2013 February 12 (Chinese Zodiac Animals)</b>		
2732f	50p	Stylized snake silhouette		S
2732		SS of 12 (Sc#2732a–l)		
		<b>2013 May 15 (New Year 2013: Year of the Snake)</b>		
2743a	3.5ce	U/I snake (head and body coils)		U A
2743b	3.5ce	U/I snake (tail)		U A
2743		SS of 2 (Sc#2743a–b)		



**2013 July 7 (Reptiles)**

2746a	2.25ce	Desert Monitor, <i>Varanus griseus</i>	Varanidae	A*
2746b	2.25ce	Nile Crocodile, <i>Crocodylus niloticus</i>	Crocodylidae	A*
2746c	2.25ce	African Slender-snouted Crocodile, <i>Crocodylus cataphractus</i>	Crocodylidae	A*
2746d	2.25ce	Ground Agama, <i>Agama aculeata</i>	Agamidae	A*
2746		MS of 4 (Sc#2746a-d)		
	Margin	L: Mwanza Flat-headed Agama, <i>Agama mwanzae</i>	Agamidae	Z*
2747a	2.25ce	African Striped Skink, <i>Trachylepis striata</i>	Scincidae	A*
2747b	2.25ce	Mwanza Flat-headed Agama, <i>Agama mwanzae</i>	Agamidae	A*
2747c	2.25ce	Red-headed Rock Agama, <i>Agama agama</i>	Agamidae	A*
2747d	2.25ce	Rock Monitor, <i>Varanus albigularis</i>	Varanidae	A*
2747		MS of 4 (Sc#2747a-d)		A*
	Margin	L: Mozambique Spitting Cobra, <i>Naja mossambica</i>	Elapidae	Z*
2748	SS 7ce	Yellow-throated Day Gecko, <i>Phelsuma flavigularis</i>	Gekkonidae	A*
	Margin	LR: African Striped Skink, <i>Trachylepis striata</i>	Scincidae	Z*
2749	SS 7ce	Mozambique Spitting Cobra, <i>Naja mossambica</i>	Elapidae	A*
	Margin	UL: Ground Agama, <i>Agama aculeata</i>	Agamidae	Z*

**GUINEA****2013 May 31 (Snakes)**

15000fr		Yellow Anaconda, <i>Eunectes notaeus</i>	Boidae	A*
15000fr		Eastern Green Mamba, <i>Dendroaspis angusticeps</i>	Elapidae	A*
20000fr		Spotted Python, <i>Antaresia maculosa</i>	Pythonidae	A*
		MS of 3		
	Margin	LL: <i>Lystrophis semicinctus</i>	Colubridae	Z*
		LR: Spotted Python, <i>Antaresia maculosa</i>	Pythonidae	A*
SS 45000fr		Indian Cobra, <i>Naja naja</i>	Elapidae	A*
	Margin	ML & LR: Carpet Python, <i>Morelia spilota</i>	Pythonidae	Z*
		LL: Milk Snake, <i>Lampropeltis triangulum</i>	Colubridae	Z*

**MALAYSIA****2012 July 16 (Banknotes) (MS of 3)**

1412	MS \$15	Margin: Green Sea Turtle, <i>Chelonia mydas</i>	Cheloniidae	A*
------	---------	---	-------------	----

**MONGLIA****2013 February 6 (New Year 2013: Year of the Snake)**

2765	600t	Stylized snake (diamond shaped)		S
------	------	---------------------------------	--	---

**NEVIS****2013 June 3 (Turtles of the World)**

1748a	\$3.25	Desert Tortoise, <i>Gopherus agassizii</i>	Testudinidae	A*
1748b	\$3.25	African Helmeted Turtle, <i>Pelomedusa subrufa</i>	Pelomedusidae	A*
1748c	\$3.25	Florida Redbelly Turtle, <i>Pseudemys nelsoni</i>	Emydidae	A*
1748d	\$3.25	Red-eared Slider, <i>Trachemys scripta elegans</i>	Emydidae	A*
1748		MS of 4 (Sc#1748a-d)		
1749	SS \$9	Gulf Coast Box Turtle, <i>Terrapene carolina major</i>	Emydidae	A*

**NEW CALEDONIA****2013 February 7 (New Year 2013: Year of the Snake)**

1149	110fr	U/I snake		U
------	-------	-----------	--	---

**2013 March 7 (Encastreaux Reefs Area)**

1150	110fr	U/I sea turtle (with Gannets)		U B
------	-------	-------------------------------	--	-----

**PHILIPPINES****2013 October 14 (50th Fish Conservation Week)**

10p		Green Sea Turtle, <i>Chelonia mydas</i>	Cheloniidae	A*
		Horiz strip of 3 different designs from Red List Painting Competition		

**THE FIRE SALAMANDER ON STAMPS**

**Dr. Vic Eichler, BU1850**

[Ed. New member Vic Eichler, a naturalist, author, and retired biology professor, is a career amphibian biologist.]

*Salamandra salamandra*, commonly known as the Fire Salamander, is probably the best known salamander throughout central and southern Europe where it is found. This amphibian is also found on the postage stamps of numerous countries. The scientific name of this salamander, which is recognizable by the mixing of its black and yellow skin pigmentation, was given by Linnaeus, the originator of scientific nomenclature, in the year 1758.



*S. salamandra*  
Croatia Sc#864  
set of 3 Amphibians  
also in bktl pane 10



*S. salamandra*  
Belgium Sc#1801  
WWF Endangered  
Reptiles & Amphibians

The salamander is found among leaves on the floor of deciduous forests, and they often crawl into openings in tree trunks or fallen wood in search of worms, larvae, insects, and spiders that make up its diet. The name “fire salamander” has persisted in the folklore of many European countries, probably due to instances when wood containing a salamander hidden within was put into a home fire, and the heat drove the small amphibian out of the wood where it appeared to originate in the flames.



*S. salamandra*  
Czech Rep. Sc#3278c  
from SS of 4+4 labels  
Krkonoše Mountains  
Nature Protection



*S. salamandra*  
East Germany Sc#664  
from set of 4 Fauna

While captive individuals may tame down enough to be handled, skin glands are capable of producing a toxic alkaloid secretion that affects the nerves and muscles. The chemical, when released into the mouth lining of a predator from the salamander’s skin glands, can cause hyperventilation as well as strong muscle contractions leading to convulsions and the immediate release of the prey by the grasping animal.



*S. salamandra*  
Laos Sc#1180  
from set of 5 “Reptiles”



*S. salamandra terrestris*  
Luxembourg Sc#766  
from set of 4  
Wildlife Conservation

The color pattern of yellow and black pigmentation is quite variable, and several subspecies have been identified. There may be black spots on a basic yellow body, or yellow spots on a basic black body. The extremes of these color patterns are shown in the illustrations below.



*S. salamandra*  
Mail (2010)  
SS of 1 Amphibians



*S. salamandra terrestris*  
Slovakia Sc#580  
from set of 2  
Nature Preservation

The popularity of this species is recognized by this sampling of postage stamps. Like amphibian species worldwide there is concern that pollution of air, land, and water, as well as the drying effects of climate change and diseases that are affecting many species of amphibians will affect populations of the Fire Salamander as well.



*S. salamandra*  
Spain Sc#1897  
set of 5 Amphibians



*S. salamandra*  
Turkey Sc#2472  
from set of 4  
World Environment Day



*S. salamandra*  
Yugoslavia Sc#2291a  
strip of 4+label  
Nature Protection



# ENTOMOLOGY

Editor

Donald P. Wright, Jr., BU243



## New Listings

Scott#	Denom	Common Name/Scientific Name	Family/Subfamily	
<b>2013 November 12</b> (Nature Photography)				
<b>ARUBA</b> f,	120c	Western Honeybee, <i>Apis mellifera</i> L. (with tarabara flower) MS of 20+5 labels (2ea Sc# a-j) (one label shows the bee)	API, Apinae	A
<b>2013 September 19</b> (Bolivian Migrants)				
<b>BOLIVIA</b>	50b	Humanized INSECTS (with luggage, passport, baby, plane, etc.)		S
<b>2013 August 5</b> (Baden-Powell & Butterflies) (Stamperija)				
1348a	1020fr	Paradise Birdwing, <i>Troides paradisea</i> Staudinger ♂	PAP, Papilioninae	B*
1348b	1190fr	Madagascan Sunset Moth, <i>Chrysidia ripheus</i> Drury	URA, Uraniinae	B*
1348c	3000fr	Orange Albatross, <i>Appias nero</i> Fabr.	PIE, Pierinae	B*
1348d	3000fr	Blue Doctor, <i>Rhetus periander</i> Cramer	RIO, Riodininae	B*
1348		MS of 4 (Sc#1348a-d)		
1368	SS 7500fr	<i>Hebomoia leucippe</i> Cramer	PIE, Pierinae	B*
	Margin	LR: Purple Emperor, <i>Apatura iris</i> L.	NYM, Apaturinae	Z*
<b>2013 August 5</b> (Fight Against Malaria) (Stamperija)				
1349b	1190fr	<i>Anopheles stephensi</i> Liston	CUL, Anophelinae	S
1349d	3000fr	<i>Anopheles stephensi</i> Liston	CUL, Anophelinae	A*
1349		MS of 4 (Sc#1349a-d)		
1369	SS 7500fr	<i>Anopheles stephensi</i> Liston (on bed netting)	CUL, Anophelinae	B*
<b>2013 August 5</b> (Gandhi & Butterflies) (Stamperija)				
1359a	1090fr	Golden Birdwing, <i>Troides aeacus</i> C&R Felder	PAP, Papilioninae	B*
1359b	1190fr	Kaiser-I-Hind, <i>Teinopalpus imperialis</i> Hope	PAP, Papilioninae	B*
1359c	3000fr	Krishna Swallowtail, <i>Papilio krishna</i> Moore	PAP, Papilioninae	B*
1359d	3000fr	Peacock Pansy, <i>Junonia almana</i> L.	NYM, Nymphalinae	B*
1359		MS of 4 (Sc#1359a-d)		
1379	SS 7500fr	Maharaja Apollo, <i>Parnassius maharaja</i> Avinoff	PAP, Papilioninae	B*
	Margin	UL & LR: Kaiser-I-Hind, <i>Teinopalpus imperialis</i> Hope	PAP, Papilioninae	Z*
<b>2013 August 20</b> (Bees & Flowers) (Stamperija)				
1398a	1090fr	Western Honeybee, <i>Apis mellifera mellifera</i> L.	API, Apinae	B*
1398b	1190fr	Eastern, or Asian Honeybee, <i>Apis cerana</i> Enderlein	API, Apinae	B*
1398c	3000fr	Western Honeybee, <i>Apis mellifera</i> L.	API, Apinae	B*
1398d	3000fr	Little or Dwarf Honeybee, <i>Apis florea</i> Fabr.	API, Apinae	B*
1423	SS 7500fr	German Wasp, <i>Vespula germanica</i> Fabr.	VES, Vespinae	B*

**CENTRAL AFRICA****2013 June 10** (Butterflies) (Stamperija)

a	900fr	<i>Milionia rawakensis</i> Quoy & Gaimard	GEO, Ennominae	A*
b	900fr	New Guinea Birdwing, <i>Troides priamus</i> L.	PAP, Papilioninae	A*
c	900fr	Queen Alexandra's Birdwing, <i>Troides alexandrae</i> Rothschild	PAP, Papilioninae	A*
d	900fr	Common Morpho, <i>Morpho cypris</i> Westwood	NYM, Morphinae	A*
		MS of 4 (Sc# a-d)		
Margin	LL:	New Guinea Birdwing, <i>Troides priamus</i> L.	PAP, Papilioninae	Z
	LR:	Pamela, <i>Perrhybris pamela</i> Stoll (Cap: <i>Perrhybris pyrrrha</i> )	PIE, Pierinae	Z
SS 3000fr		Apollo, <i>Parnassius apollo</i> L.	PAP, Parnassiinae	A*
Margin	UL:	Common Morpho, <i>Morpho cypris</i> Westwood	NYM, Morphinae	Z
	LL:	Black-veined White, <i>Aporia crataegi</i> L. (Cap: <i>Pieris c.</i> )	PIE, Pierinae	Z

**2013 June 10** (Bees & Peonies) (Stamperija)

a	750fr	Miner Bee, <i>Dasygaster altercator</i> Harris	Dasygasteridae,	B
b	750fr	Carniolan Honeybee, <i>Apis mellifera carnica</i> Pollmann	API, Apinae	B
c	750fr	European Wool Carder Bee, <i>Anthidium manicatum</i> L.	MEGA, Megachilinae	B
d	750fr	<i>Colletes daviesanus</i> Smith	Colletidae	B
		MS of 4 (Sc# a-d)		
Margin		Western Honeybee, <i>Apis mellifera</i> L.	API, Apinae	Z
SS 2650fr		<i>Colletes daviesanus</i> Smith (also in margin)	Colletidae	B

**CONGO D. R.****2013** (Bees & Orchids) (Stamperija)

These sets contain a MS of four with each of the four values issued in its own SS of one. There is a separate SS containing all four values. Each of the SS has other insects in the margin.

a	800fr	European Wool Carder Bee, <i>Anthidium manicatum</i> L.	MEGA, Megachilinae	B*
b	800fr	Tawny Mining Bee, <i>Andrena fulva</i> Müller	Andrenidae, Andreninae	B*
c	800fr	African Honeybee, <i>Apis mellifera scutellata</i> Lepelletier	API, Apinae	B*
d	800fr	Italian Honeybee, <i>Apis mellifera ligustica</i> Spinola	API, Apinae	B*
		MS of 4 (Sc# a-d)		
SS 800fr		European Wool Carder Bee, <i>Anthidium manicatum</i> L.	MEGA, Megachilinae	B*
Margin	Top:	Bee swarm on a tree branch		Z*
	LR:	Egyptian Honeybee, <i>Apis mellifera lamarckii</i> Cockerell	API, Apinae	Z*
SS 800fr		Tawny Mining Bee, <i>Andrena fulva</i> Müller	Andrenidae, Andreninae	B*
Margin	UR:	Stingless Bee, <i>Meliponula ferruginea</i> Cockerell	API, Apinae	Z*
SS 800fr		African Honeybee, <i>Apis mellifera scutellata</i> Lepelletier	API, Apinae	B*
Margin	UR:	Same species (11 bees with set of beehives)	API, Apinae	Z*
	LR:	Violet Carpenter Bee, <i>Xylocopa violacea</i> L.	API, Xylocopinae	Z*
SS 800fr		Italian Honeybee, <i>Apis mellifera ligustica</i> Spinola	API, Apinae	B*
Margin	UR:	Western Honeybee, <i>Apis mellifera mellifera</i> L. (2 bees)	API, Apinae	Z*
	LR:	Friar, <i>Amauris niavius dominicanus</i> Trimen	NYM, Danainae	Z*
		SS of 4 (Sc# a-d)		
Margin	LL:	Giant Honeybee, <i>Apis dorsata</i> Fabr.	API, Apinae	Z*
	LR:	Dwarf Honeybee, <i>Apis florea</i> Fabr.	API, Apinae	Z*

**2013** (Insects) (Stamperija)

a	650fr	<i>Anthia sexmaculata</i> Fabr.	CAR, Anthiinae	A*
b	650fr	<i>Henosepilachna elaterii</i> , Rossi	COC, Epilachninae	A*
c	650fr	<i>Lycus latissimus</i> L.	Lycidae, Lycinae	A*
d	650fr	Common Eastern Firefly, <i>Photinus pyralis</i> L.	LAM, Lampyrinae	A*
		MS of 4 (Sc# a-d)		

<b>CONGO D. R. (continued)</b>		<b>2013 (Insects) (Stamperija)</b>	
Margin	UL: DAMSELFLY ML: U/I INSECT ML: Southern Green Stink Bug, <i>Nezara viridula</i> L. LL: Cowpea Weevil, <i>Callosobruchus maculatus</i> Fabr. UR: Flower Mantis, <i>Creobroter</i> sp. MR: Common Eastern Firefly, <i>Photinus pyralis</i> L. MR: CICADA LR: <i>Micropterix aureatella</i> Scopoli	Odonata PEN, Pentatominae CER, Bruchinae HYM, Hymenopodinae LAM, Lampyrinae Cicadidae Micropterigidae CAR, Anthiinae CER, Lamiinae RED, Reduviinae COC, Epilachninae Plataspidae CER, Bruchinae Lycidae, Lycinae PEN, Pentatominae HYM, Hymenopodinae LAM, Lampyrinae MEL, Meloinae SPH, Macroglossinae Micropterigidae CER, Lamiinae CER, Lamiinae CER, Prioninae TEN, Pimeliinae	U Z U Z Z Z Z Z U Z Z A* Z* Z* A* Z* Z* A* Z* Z* A* Z* Z* Z* Z*
SS 650fr	<i>Anthia sexmaculata</i> Fabr.	CAR, Anthiinae	A*
Margin	UR: Longhorn Beetle, <i>Analeptes trifasciata</i> Fabr. LR: White Spot Assassin Bug, <i>Platyeris biguttata</i> L.	CER, Lamiinae RED, Reduviinae	Z* Z*
SS 650fr	Pumpkin Ladybug, <i>Henosepilachna elaterii</i> , Rossi	COC, Epilachninae	A*
Margin	UR: <i>Ceratocoris horni</i> , Schouteden LR: Cowpea Weevil, <i>Callosobruchus maculatus</i> Fabr.	Plataspidae CER, Bruchinae	Z* Z*
SS 650fr	<i>Lycus latissimus</i> L.	Lycidae, Lycinae	A*
Margin	UR: Southern Green Stink Bug, <i>Nezara viridula</i> L. LR: Flower Mantis, <i>Creobroter</i> sp.	PEN, Pentatominae HYM, Hymenopodinae	Z* Z*
SS 650fr	Common Eastern Firefly, <i>Photinus pyralis</i> L.	LAM, Lampyrinae	A*
Margin	UR: Yellow-banded Blister Beetle, <i>Mylabris phalerata</i> Pallas MR: Hummingbird Hawkmoth, <i>Macroglossum stellatarum</i> L. LR: <i>Micropterix aureatella</i> Scopoli SS of 4 (Sc# a-d)	MEL, Meloinae SPH, Macroglossinae Micropterigidae	Z* Z* Z*
Margin	UL: <i>Eotithoes palinii</i> Hope LL: <i>Tragostoma imperator</i> Aurivillius (Cap: <i>Tragsomi i.</i> ) UR: <i>Sobarus poggei</i> Harold MR: Striped Toktokkie Beetle, <i>Psammodes striatus</i> Fabr.	CER, Lamiinae CER, Lamiinae CER, Prioninae TEN, Pimeliinae	Z* Z* Z* Z*
<b>COOK ISLANDS</b>		<b>2014 January 6 (Entomology)</b>	
10c	Oceanic Field Cricket, <i>Teleogryllus oceanicus</i> Le Guillou	GRY, Gryllinae	A*
40c	Mimicking Snout-nose Katydid, <i>Pseudorhynchus lessonii</i> Serville (Cap: <i>Euconocephalus roberti</i> )	TET, Conocephalinae	A*
\$1	Western Honeybee, <i>Apis mellifera</i> L.	API, Apinae	A*
\$2.10	Cabbage Cluster Caterpillar, <i>Crocidolomia pavonana</i> Fabr.	CRA, Evergestinae	A*
\$2.50	Meadow Argus, <i>Junonia villida</i> Fabr.	NYM, Nymphalinae	A*
\$3	Polynesian Tiger Mosquito, <i>Aedes polynesiensis</i> Marks	CUL, Culicinae	A*
\$3.50	Glassy-winged Sharpshooter, <i>Homalodisca vitripennis</i> Germar (Cap: <i>Homalodisca coagulate</i> )	CICA, Cicadellinae	A*
\$4.50	Humpback Bug, <i>Lygus flavoscutellatus</i> Distant	MIR, Mirinae	A*
\$5.50	Perry's Crow, <i>Euploea lewinii perryi</i> Butler	NYM, Danainae	A*
\$6.70	Blue Moon, <i>Hypolimnas bolina</i> L.	NYM, Nymphalinae	A*
\$7	Wood louse, <i>Porcellio laevis</i> Latreille	Isopoda, Porcellionidae	A*
\$10.10	Bowden's Vagrant, <i>Vagrans egista bowdenia</i> Butler, (Cap: <i>Vagrans egista bodenia</i> ) MS of 12 (Sc# a-l)	NYM, Heliconiinae	A*

**CUBA****2013 May 22**

There is some confusion here. Scott Catalogue lists the following insects as Sc#5289–96, but shows them as being issued on 2012 May 22, and in a different order, i.e., according to Scott, the 5c shows *Phoebis avellaneda*, etc. Not having seen any of them, I do not know if there really are two different sets, or the 2013 listing is in error. Any further information is welcome. —DPW

[Ed. note: Stamp World (see Web References) shows images of the May 2012 issue just as Scott lists them. I do not know where Don got the listing for the first set with different values (75c, 65c, 5c, 15c, 40c, 90c, 85c, 10c). It appears to be erroneous. Cuba issued the other set in 2013. Images of it are at PostBeeld.com.]

5289	5c	<i>Phoebis avellaneda</i> Herrich-Schaeffer	PIE, Coliadinae	A*
5290	10c	<i>Parides gundlachianus</i> C&R Felder	PAP, Papilioninae	A*
5291	15c	<i>Greta cubana</i> Herrich-Schaeffer	NYM, Danainae	A*
5292	35c	<i>Protographium celadon</i> Lucas	PAP, Papilioninae	A*
5293	40c	<i>Anartia chrysopelea</i> Hübner	NYM, Nymphalinae	A*
5294	65c	<i>Dismorphia cubana</i> Herrich-Schaeffer	PIE, Dismorphiinae	A*
5295	75c	<i>Calisto israeli</i> Torre	NYM, Satyrinae	A*
5296	85c	<i>Libytheana motya</i> Hübner	NYM, Libytheinae	A*

**2013**

	5c	Poey's Black Swallowtail, <i>Papilio caiguanabus</i> Poey	PAP, Papilioninae	A*
	10c	Mays' Skipper, <i>Proteides maysi</i> Lucas	HES, Pyrginae	A*
	15c	Cuban Hairstreak, <i>Allosmaitia coelebs</i> Herrich-Schaeffer	LYC, Theclinae	A*
	40c	Salvin's Anetia, <i>Anetia cubana</i> Salvin	NYM, Danainae	A*
	65c	Cuban Sulfur, <i>Kricogonia cabrerai</i> Ramsden	PIE, Coliadinae	A*
	75c	Oxynius Swallowtail, <i>Papilio oxynius</i> Geyer	PAP, Papilioninae	A*
	85c	Cuban Harlequin, <i>Atlantea perezii</i> Herrich-Schaeffer	NYM, Nymphalinae	A*
	90c	<i>Eurema lucina</i> Poey	PIE, Coliadinae	A*

**CURAÇAO****2013**

	65c	<i>Chlorocala africana oertzeni</i> Kolbe	SCA, Cetoninae	A*
	118c	<i>Stephanorrhina julia</i> Waterhouse	SCA, Cetoninae	A*
	175c	<i>Mecynorrhina passerini nyanzanas</i> Bureon (Cap: <i>Amaurodes</i> )	SCA, Cetoninae	A*
	181c	<i>Protaetia speciosa jousselini</i> Gory & Percheron (Cap: <i>Cetonischema speciosa jousselini</i> )	SCA, Cetoninae	A*
	250c	Eastern Goliath Beetle, <i>Goliathus orientalis</i> Moser	SCA, Cetoninae	A*
	301c	<i>Eudicella aethiopica</i> Muller	SCA, Cetoninae	A*
	428c	<i>Ranzania bertoloni</i> Lucas	SCA, Cetoninae	A*
	500c	<i>Dicronorrhina derbyana layardi</i> Péringuey	SCA, Cetoninae	A*

**CZECH REPUBLIC****2013 September 4** (Karlštejn National Nature Reserve) (SS/4+4labels)

3579a	10k	Pine Grasshopper, <i>Chorthippus vagans</i> Eversmann	ACR, Gomphocerinae	B*
3579c	18k	L: Chalk Hill Blue, <i>Polyommatus coridon</i> Poda ♂	LYC, Polyommatinae	B*
		R: Clouded Yellow, <i>Colias croceus</i> Fourcroy ♂ & ♀	PIE, Coliadinae	B*
Margin		UL: U/I BUTTERFLY	NYM, Nymphalinae	U Z*
		UR: Lesser Purple Emperor, <i>Apatura ilia</i> Denis & Schiffermüller	NYM, Apaturinae	Z*
		MR: <i>Hypercallia citrinalis</i> Scopoli	OEC, Amphibatininae	Z*
		LR: <i>Paidia rica</i> Freyer	ARC, Lithosiinae	Z*
		Bot: <i>Carabus cancellatus</i> Illiger	CAR, Carabinae	Z*
		Top label: <i>Pyrausta castalis</i> Treitschke	CRAM, Pyraustinae	Z*

**DJIBOUTI****2013 (Butterflies) (Stamperija) (2ea MS of 4 & MS of 6)**

a	100fr	<i>Papilio blumei</i> Boisduval	PAP, Papilioninae	A*
b	200fr	Regal or Banknote Blue, <i>Evenus regalis</i> Cramer	LYC, Theclinae	A*
c	300fr	Blue Doctor, <i>Rhetus periander</i> Cramer	RIO, Riodininae	A*
d	400fr	Euchenor Butterfly, <i>Papilio euchenor</i> Guérin-Ménéville	PAP, Papilioninae	A*
a	100fr	Blue Morpho, <i>Morpho menelaus didius</i> Hopffer	NYM, Morphinae	A*
b	200fr	<i>Opsiphanes sallei</i> Doubleday	NYM, Morphinae	A*
c	300fr	<i>Stalactis calliope</i> L.	RIO, Riodininae	A*
d	400fr	Tailed Sulfur, <i>Phoebis neocypris rurina</i> C&R Felder	PIE, Coliadinae	A*
a	100fr	False Acraea, <i>Pseudacraea boisduvali</i> Doubleday	NYM, Limenitidinae	A*
b	200fr	Leprieuri's Glory, <i>Asterope leprieuri</i> Feisthamel	NYM, Biblidinae	A*
c	300fr	Tiger Leafwing, <i>Consul fabius</i> Cramer, label: <i>Anaea</i>	NYM, Charaxinae	A*
d	400fr	<i>Salamis anteva</i> Ward	NYM, Nymphalinae	A*
e	500fr	Acontius Firewing, <i>Catonephele acontius</i> L.	NYM, Biblidinae	A*
f	600fr	<i>Fountainea nobilis</i> Bates (Cap: <i>Anaea nobilis</i> )	NYM, Charaxinae	A*

**DOMINICA****2013 September 2 (Bees and Wasps) (MS of 4 & SS)**

2789a	\$2	Eastern Carpenter Bee, <i>Xylocopa virginica</i> L.	API, Xylocopinae	A*
2789b	\$2	Golden Digger Wasp, <i>Spheg ichneumoneus</i> L.	SPHE, Sphecinae	A*
2789c	\$2	California Bumblebee, <i>Bombus californicus</i> Smith	API, Apinae	A*
2789d	\$2	German Wasp, <i>Vespula germanica</i> Fabr.	VES, Vespinae	A*
2790	SS \$5	Golden Paper Wasp, <i>Polistes fuscatus aurifer</i> Saussure	VES, Polistinae	A*

**2013 September 2 (Caribbean Butterflies)**

These stamps show only a simplified view of the wing patterns detached from any body parts. They were issued in MS of four containing two of each stamp alternating side-to-side.

2797a	\$2	Malachite, <i>Siproeta stelenes</i> L.	NYM, Nymphalinae	S
2797b	\$2	Silver-banded Hairstreak, <i>Chlorostymon simaethis</i> Drury	LYC, Theclinae	S
2797		Pair (Sc#2797a–b)		
2798a	\$2	Gold Rim, <i>Battus polydamas</i> L.	PAP, Papilioninae	S
2798b	\$2	Mangrove Buckeye, <i>Junonia evarete</i> Cramer	NYM, Nymphalinae	S
2798		Pair (Sc#2798a–b)		

**GUINEA****2013 September 15 (Butterflies of the World) (Stamperija) (MS 3 & SS)**

a	15000fr	Long-tailed Skipper, <i>Urbanus proteus</i> L.	HES, Pyrginae	A*
b	20000fr	Orange-barred Sulphur, <i>Phoebis philea</i> L.	PIE, Coliadinae	A*
c	20000fr	Blue Morpho, <i>Morpho rhetenor</i> Cramer, ♂	NYM, Morphinae	A*
SS	40000fr	<i>Callicore lyca aegina</i> C&R Felder (Cap: <i>C. aegina aegina</i> )	NYM, Biblidinae	A*
Margin		UL: Purple Emperor, <i>Apatura iris</i> L.	NYM, Apaturinae	Z*
		LL: <i>Brephidium exilis isophthalma</i> , Herrich-Schäffer (Cap: <i>Brephidium isophthalma</i> )	LYC, Polyommatae	Z*
		UR: Gulf Fritillary, <i>Agraulis vanillae lucina</i> C&R Felder	NYM, Heliconiinae	Z*
		LR: Figtree Blue, <i>Myrina silenus</i> Fabr.	LYC, Theclinae	Z*

**GUINEA-BISSAU****2013 June 24 (Butterflies of Africa) (Stamperija) (MS of 4 & SS)**

a	800fr	Janetta Themis Forester, <i>Euphaedra janetta</i> Butler	NYM, Limenitidinae	A*
b	800fr	<i>Salamis cytora</i> Doubleday & Hewitson (Cap: <i>Protogoniomorpha cytora</i> )	NYM, Nymphalinae	A*
c	800fr	Christmas Butterfly, <i>Papilio demodocus</i> Esper	PAP, Papilioninae	A*
d	800fr	Large Fairy Hairstreak, <i>Hypolycaena antifaunus</i> Westwood	LYC, Theclinae	A*



**GUINEA-BISSAU** (continued)

SS 2800fr	Common Grass Yellow, <i>Eurema hecabe</i> L.	PIE, Coliadinae	A*
Margin	UR: Janetta Themis Forester, <i>Euphaedra janetta</i> Butler	NYM, Limenitidinae	Z*
	MR: Western Red Glider, <i>Cymothoe mabillei</i> Overlaet	NYM, Limenitidinae	Z*
	LR: Gaudy Commodore, <i>Precis octavia</i> Cramer (wet season)	NYM, Nymphalinae	Z*

**2013 June 24** (Boy Scouts) (Stamperija) (MS of 4)

a	800fr	African Grass Blue, <i>Zizeeria knysna</i> Trimen (with Boy Scout)	LYC, Polyommatainae	B*
---	-------	--	---------------------	----

**MALDIVE ISLANDS**

**2013 October 25** (Tropical Butterflies) (Stamperija) (MS of 4 & SS)

a	22r	Japanese Emperor, <i>Sasakia charonda</i> Hewitson	NYM, Apaturinae	A*
b	22r	Blue Triangle, <i>Graphium sarpedon luctatius</i> , Fruhstorfer	PAP, Papilioninae	A*
c	22r	Regal Hairstreak, <i>Evenus regalis</i> Cramer	LYC, Theclinae	A*
d	22r	Dazzling Glasswing, <i>Godyris duillia</i> Hewitson	NYM, Danainae	A*
	SS 70r	Malay Cruiser, <i>Vindula dejone erotella</i> , Butler	NYM, Heliconiinae	A*
Margin		UL: Common Mime, <i>Papilio clytia clytia</i> L. (Cap: <i>Chilasa clytia clytia</i> )	PAP, Papilioninae	Z*
		Top: Red Lacewing, <i>Cethosia biblis perakana</i> Fruhstorfer	NYM, Heliconiinae	Z*
		LL: Fivebar Swordtail, <i>Graphium antiphates itamputi</i> Butler (Cap: <i>Pathysa antiphates itamputi</i> )	PAP, Papilioninae	Z*
		LR: Great Mormon, <i>Papilio memnon agenor</i> L.	PAP, Papilioninae	Z*

**MALI**

**2013 September 26** (Bees) (Stamperija)

The two 500fr stamps are right triangles framing the 1800fr stamp, which is diamond-shaped, as is the SS.

a	500fr	<i>Nomada succincta</i> Panzer	API, Nomadinae	A*
b	500fr	Alfalfa Leafcutter Bee, <i>Megachile rotundata</i> Fabr.	MEGA, Megachilinae	A*
c	1800fr	Western Honeybee, <i>Apis mellifera</i> L.	API, Apinae	A*
	SS 1800fr	<i>Bombus</i> sp.	API, Apinae	A*
Margin		LL & UR: Western Honeybee, <i>Apis mellifera</i> L. (with honey)	API, Apinae	Z*

**MOZAMBIQUE**

**2013 June 25** (Bees) (Stamperija) (MS of 4 & SS)

a	16m	<i>Anthidium florentinum</i> Fabr.	MEGA, Megachilinae	A*
b	16m	Little or Dwarf Honeybee, <i>Apis florea</i> Fabr.	API, Apinae	A*
c	92m	Blueberry Bee, <i>Osmia ribifloris</i> Cockerell	MEGA, Megachilinae	A*
d	92m	Buff-tailed Bumblebee, <i>Bombus terrestris</i> L.	API, Apinae	A*
	SS 175m	Western Honeybee, <i>Apis mellifera</i> L.	API, Apinae	A*
Margin		Same bee (10 examples)		

**2013 June 25** (Butterflies & Orchids) (Stamperija) (MS of 4 & SS)

a	16m	Anise Swallowtail, <i>Papilio zelicaon</i> Lucas	PAP, Papilioninae	A*
b	16m	Malay Birdwing, <i>Troides amphrysus</i> Cramer	PAP, Papilioninae	A*
c	92m	Zodiac Moth, <i>Alcides metaurus</i> Hopffer, ( <i>zodiaca</i> of some)	URA, Uraniinae	A*
d	92m	Queen Victoria's Birdwing, <i>Troides victoriae</i> Gray ♀	PAP, Papilioninae	A*
Margin		Top: Indian Blue Moth, <i>Amesia sanguiflua</i> Drury (Cap: <i>Erasmia sanguiflua</i> )	ZYG, Chalcosiinae	Z*
	SS 175m	L: Orchard Swallowtail, <i>Papilio aegaeus</i> Donovan ♀	PAP, Papilioninae	B*
		R: <i>Erasmia pulchella</i> Hope	ZYG, Chalcosiinae	B*
Margin		UL: <i>Morpho anaxibia</i> Esper	NYM, Morphinae	Z*
		LL: Common Buckeye, <i>Junonia coenia</i> Hübner	NYM, Nymphalinae	Z*

<b>MOZAMBIQUE</b> (continued)		<b>2013 June 25</b> (Mushrooms & Insects) (Stamperija)		
a	16m	UL: Mantis, <i>Choeradodis</i> sp. LR: Spider, <i>Phrynus lunatus</i> Pallas	MAN, Choeradodinae Phrynidae	B* B*
b	16m	Oleander Hawkmoth, <i>Daphnis nerii</i> L.	SPH, Macroglossinae	B*
c	92m	UR: New Guinea Birdwing, <i>Troides priamus</i> L. (Cap: <i>Papilio</i> ) LR: Giant Woodwasp, <i>Urocerus gigas</i> L. (Cap: <i>Sirex gigas</i> )	PAP, Papilioninae SIR, Siricinae	B* B*
d	92m	<i>Heterosternus buprestoides</i> Dupont (Cap: <i>Heterosterne buprestoide</i> )	SCA, Rutelinae	B*
SS	175m	UL: Banded Demoiselle, <i>Calopteryx splendens</i> Harris LR: Fox Moth, <i>Macrothylacia rubi</i> L. (larva)	CAL, Calopteryginae LAS, Lasiocampinae	B* B*
Margin		UL: Spider, <i>Phrynus lunatus</i> Pallas ML: Mantis, <i>Choeradodis</i> sp. LL: <i>Heterosternus buprestoides</i> Dupont MR: Oleander Hawkmoth, <i>Daphnis nerii</i> L. CTR: Giant Woodwasp, <i>Urocerus gigas</i> L. LR: New Guinea Birdwing, <i>Troides priamus</i> L.	Phrynidae MAN, Choeradodinae SCA, Rutelinae SPH, Macroglossinae SIR, Siricinae PAP, Papilioninae	Z* Z* Z* Z* Z* Z*
<b>NEW CALEDONIA</b>		<b>2013 November 7</b> (Honey & Bees)		
a	110fr	Honey jars, beehives, & beekeeper		R
b	110fr	Western Honeybee, <i>Apis mellifera</i> L. Horiz pair (Sc# a-b)	API, Apinae	A*
<b>NEVIS</b>		<b>2013 April 25</b>		
	\$9	<i>Simulium bipunctata</i> Malloch	Simuliidae, Simuliinae	A
<b>NIGER</b>		<b>2013 March 1</b> (Stamperija) (New data)		
1143d	750fr	Amethyst Blue, <i>Zizeeria knysna</i> Trimen	LYC, Polyommatae	A*
Margin		UL: Tropical Striped Blue, <i>Leptotes pirithous</i> L. LL: Bush Scarlet, <i>Axiocerses amanga</i> Westwood UR: Bath White, <i>Pontia daplidice</i> L. LR: Violet Tip, <i>Colotis celimene</i> Lucas	LYC, Theclinae LYC, Theclinae PIE, Pierinae PIE, Pierinae	Z* Z* Z* Z*
1169	2500fr	Plain Tiger, <i>Danaus chrysippus</i> L.	NYM, Danainae	A*
Margin		UL: Amethyst Blue, <i>Zizeeria knysna</i> Trimen LL: Common Five-ring, <i>Ypthima baldus</i> Fabr. UR: Plain Tiger, <i>Danaus chrysippus</i> L. MR: Violet-eyed Evening Brown, <i>Melanitis libya</i> Distant LR: Foxy Charaxes, <i>Charaxes jasius</i> L.	LYC, Polyommatae NYM, Satyrinae NYM, Danainae NYM, Satyrinae NYM, Charaxinae	Z* Z* Z* Z* Z*
<b>PALAU</b>		<b>2013 September 17</b> (Butterflies of Oceania) (MS of 4 & SS)		
a	\$1.20	Tailed Jay, <i>Graphium agamemnon</i> L.	PAP, Papilioninae	A*
b	\$1.20	Old World Swallowtail, <i>Papilio machaon</i> L.	PAP, Papilioninae	A*
c	\$1.20	Common or White Albatross, <i>Appias albina</i> Boisduval	PIE, Pierinae	A*
d	\$1.20	Australian Lurcher, <i>Yoma sabina</i> Cramer	NYM, Nymphalinae	A*
SS	\$3.50	Macleay's Swallowtail, <i>Graphium macleayanus</i> Leach	PAP, Papilioninae	A*
<b>PORTUGAL</b>		<b>2013 September 23</b> (Apiculture) (Set of 4 & 2 SS)		
	36c	Western Honeybee, <i>Apis mellifera</i> L. (with honeycomb)	API, Apinae	B*
	50c	Same bee (10 examples at hive)	API, Apinae	B*
	70c	Same bee (4 bees over field)	API, Apinae	B*
	80c	Same bee (3 bees at flowers)	API, Apinae	B*
SS	€1.70	Same bee (on flower)	API, Apinae	B*
SS	€1.90	Same bee (on flower with apiarist removing honey)	API, Apinae	B*

<b>PORTUGAL (Azores)</b>		<b>2013 October 9</b> (Apiculture) (Set of 4 & 2 SS)	
36c	Western Honeybee, <i>Apis mellifera</i> L. (apiarists removing honey)	API, Apinae	C
70c	Same bee (apiarist smoking hives)	API, Apinae	C
80c	Same bee (apiarists with round hives)	API, Apinae	C
€1.70	Same bee (apiarist removing honey)	API, Apinae	C
SS €1.70	Same bee (with cow and round hives) (also in margin)	API, Apinae	C
SS €1.90	Same bee (with apiarists, cows, and square hives)	API, Apinae	C

<b>PORTUGAL (Madeira)</b>		<b>2013 May 17</b> (Apiculture) (Set of 4 & 2 SS)	
36c	Western Honeybee, <i>Apis mellifera</i> L. (by lagoon)	API, Apinae	A*
70c	Same bee (on purple & white flower)	API, Apinae	A*
80c	Same bee (on white flower)	API, Apinae	A*
€1.70	Same bee (with hives & apiarist)	API, Apinae	B*
SS €1.70	Same bee (in flight with flower)	API, Apinae	B*
SS €1.90	Same bee (on leaf with hives)	API, Apinae	B*

**ST. THOMAS & PRINCE IS.**      **2013 May 10 & 20** (Stamperija)

Change all 95000d values to 96000d in these three sets

<b>SIERRA LEONE</b>		<b>2013 September 9</b> (Insects of Africa) (MS of 4 & SS)	
a	5000L <i>Analeptes trifasciata</i> Fabr.	CER, Lamiinae	A*
b	5000L <i>Eotithoes palinii</i> Hope	CER, Prioninae	A*
c	5000L <i>Hecphora latefasciata</i> Jordan	CER, Lamiinae	A*
d	5000L <i>Gnathoena flavovariegata</i> Breuning	CER, Lamiinae	A*
Margin	UL: Centaur Beetle, <i>Archon centaurus</i> Fabr.	SCA, Dynastinae	Z*
	ML: <i>Cicindela</i> sp.	CAR, Cicindelinae	Z*
	LL: Speckled Rose Chafer, <i>Stephanorrhina guttata</i> Olivier	SCA, Cetoniinae	Z*
SS 16000L	Royal Goliath Beetle, <i>Goliathus regius</i> Klug	SCA, Cetoniinae	A*
Margin	UL: U/I BEETLE		U A
	LL: U/I BEETLE		U A
	UR: U/I BEETLE		U A

**SINGAPORE**      **2013 July 13** (Greening of Singapore)

This issue includes a set of four gummed stamps (1st, 50c, 80c, \$1.10), s/a MS of two each of the 1st and 50c values, and SS with the designs of all four stamps in a continuous horizontal strip. The MS and SS are embedded with some flower seeds that will grow if you plant the stamps according to instructions.

80c	R: Blue Pansy, <i>Junonia orithya</i> L.	NYM, Nymphalinae	C
	T: Blue-spotted Crow, <i>Euploea midamus singapura</i> Moore (larva)	NYM, Danainae	C
\$1.10	Crimson Dropwing, <i>Trithemis aurora</i> Burmeister	Libellulidae	C
	MS of 4 (2ea 1st & 50c)		
Margin	Stylized BUTTERFLIES, DRAGONFLY, BEETLES		S Z
SS \$5	Continuous design		

**ST. MARTIN**      **2013 May 2** (Correction)

350c	Acmon Blue, <i>Aricia acmon</i> Westwood	LYC, Polyommatae	
------	--	------------------	--

**TOGO**      **2013 August 30** (Butterflies of Togo) (Stamperija) (MS of 3 & SS)

a	950fr Mimetic Swallowtail, <i>Papilio cynorta</i> Fabr.	PAP, Papilioninae	A*
b	950fr Giant Blue Swallowtail, <i>Papilio zalmoxis</i> Hewitson	PAP, Papilioninae	A*
c	950fr African Giant Swallowtail, <i>Papilio antimachus</i> Drury	PAP, Papilioninae	A*
SS 2500fr	Green-patch Swallowtail, <i>Papilio phorcas</i> Cramer	PAP, Papilioninae	A*
Margin	LL & LR: Christmas Butterfly, <i>Papilio demodocus</i> Esper	PAP, Papilioninae	Z*

**URUGUAY****2013 August 30**

2437a	15p	<i>Borellia bruneri</i> Rehn	ACR, Gomphocerinae	A*
2437b	15p	<i>Diloboderus abderus</i> Sturm, ♂	SCA, Dynastinae	A*
2437c	15p	<i>Sulcophanaeus menelas</i> Castelnau	SCA, Scarabaeinae	A*
2437d	15p	Western Honeybee, <i>Apis mellifera</i> L.	API, Apinae	A*

*Linn's Stamp News* has announced that they will no longer list new issues in their weekly journal, since the same information is said to be mostly duplicated in the monthly "Scott New Issues Update." This is false, since many issues never get a Scott Catalogue listing, or if they do, it is long after they have appeared in the Linn's new issues list. In fact, many of the Stamperija, Ltd. and other such issues never get listed by Scott, or when they do, it can be years after the issue date. There are probably a number of reasons for this decision to cease new issue listings, but I cannot help wondering if this is not partly an effort to discourage the many topical issues from Stamperija, Ltd. and various non-existent countries. Depending on your particular viewpoint, that may or may not be desirable. Since some collect these issues and others do not, I have tried to list everything and include a notation as to the source so that all can pick what they do or do not want to collect.—DPW

[Ed. note: For other comments on this subject, see the "Letters" section.]

**BUZZ!**

In 2013, Portugal along with its two Autonomous Regions, The Azores and Madeira, each issued sets of four stamps and two souvenir sheets to promote apiculture, a fancy name for beekeeping. The output began on 17 May with the issue from Madeira and ended on 9 October with the issue from The Azores.

Beekeeping was a popular stamp topic in 2013. New Zealand also issued a set of five stamps and a SS on 3 July, and New Caledonia released a pair to publicize the industry on 7 November. In addition, the 15p value in a set from Uruguay on rural workers issued on 17 May shows an image of a beekeeper in full regalia holding a honeycomb apparently just removed from a hive in the background.



In fact, I believe you could put together a single-frame exhibit on bees and honey with just the stamps issued in 2013, because Yemen, Romania, Dominica, Bosnia, Gambia, Mali, Niger, Mozambique, and Nevis all also issued stamps last year having bees and/or honey as a subject.

The Portuguese post office, Correio, issued these 18 stamps, each of which is valid for use throughout Portugal. The stamps were printed using offset lithography by Cartor in sheets of 50 for the Azorean and Madeiran stamps, and in sheets of 20 for the Portuguese stamps. All stamps are denominated in euros and are perforated 13 with a Cross of Christ perforation on the vertical sides. The Portuguese stamps measure 80×30.6mm, and the regional stamps measure 40×30.6mm. All of the souvenir sheets measure 125×95mm.

The illustrator for the Azores issue was Pedro Ferreira. Elizabete Fonseca designed the Madeiran issue and José Projecto was the designer for the Portuguese set.

Beekeeping is one of humanity's oldest agricultural activities and has been depicted in 15,000 year old cave paintings as well in 5,000 year old Egyptian tomb drawings. In fact, jars of honey were found in the tomb of Tutankhamen. In addition to the production of honey as a valuable food source, apiculture directly produces other commercial products such as pollen and beeswax, and indirectly enhances the economy by ensuring crop pollination.



# PALEONTOLOGY

Editor

Dr. Hans-Peter Schultze



Scott# Denom Common Name/Scientific Name

Order: Family

## MAN

### BURUNDI

2013 August 20 (Human Ancestors)

1390a 1020fr *Homo erectus* (hunting)  
 1390b 1180fr *Homo neanderthalensis* (drawing on cave wall)  
 1390c 3000fr *Homo neanderthalensis* (drawing of mammoth)  
 1390d 3000fr *Homo floresiensis* (hunting)  
 1415 SS 7500fr *Homo neanderthalensis* (drawing on cave wall)

Primates: Hominoidea  
 Primates: Hominoidea  
 Primates: Hominoidea  
 Primates: Hominoidea  
 Primates: Hominoidea

## MAMMALS

### PERU

2013 October 12 (Prehistoric Animals)

1829 SS 10s Extinct rodent remains, *Canaanimys maquiensis*

Rodentia: Hystricomorpha

## REPTILES

### ARGENTINA

2012 April 28 (Natural Science Museum) (Set of 4)

2653 2.50p Dinosaur skeleton, *Bonatitan reigi*

Sauropodomorpha: Titanosauria

### AUSTRALIA

2013 September 24 (Australia's Age of Dinosaurs)

3987 60c *Serendipaceratops arthurclarkei*  
 3987a Bklt pane 4 (Sc#3987) (perf 14½×14)  
 3987b 60c Same reptile (perf 14½)  
 3988 60c *Timimus hermani* (perf 14½×14)  
 3988a 60c Same reptile (perf 14×13½)  
 3988b Bklt pane 2 (Sc#3988a)  
 3988c 60c Same reptile (perf 14½)  
 3989 60c *Qantassaurus intrepidus*  
 3989a Bklt pane 4 (Sc#3989) (perf 14½×14)  
 3989b 60c Same reptile (perf 14½)  
 3990 60c *Diamantinasaurus matildae* (perf 14½×14)  
 3990a 60c Same reptile (perf 14×13½)  
 3990b Bklt pane 2 (Sc#3990a)  
 3990c 60c Same reptile (perf 14½)  
 3991 60c *Australovenator wintonensis*  
 3991a Bklt pane 4 (Sc#3991) (perf 14½×14)  
 3991b 60c Same reptile (perf 14½)  
 3991c SS of 6 (Sc#3986b, 3987b, 3988c, 3989b, 3990c, 3991b)  
 3993 60c *Diamantinasaurus matildae*  
 3993a Bklt pane 10 (5ea Sc#3992–93) (s/a, die cut 11¼)  
 3994 60c *Australovenator wintonensis*  
 3995 60c *Serendipaceratops arthurclarkei*  
 3995a Bklt pane 20 (10ea Sc#3994–95) (s/a, die cut 11¼)

Ornithischia: Ceratopsia  
 Ornithischia: Ceratopsia  
 Saurischia: Theropoda  
 Saurischia: Theropoda  
 Saurischia: Theropoda  
 Ornithischia: Ornithopoda  
 Ornithischia: Ornithopoda  
 Sauropodomorpha: Titanosauria  
 Sauropodomorpha: Titanosauria  
 Sauropodomorpha: Titanosauria  
 Saurischia: Theropoda  
 Saurischia: Theropoda  
 Sauropodomorpha: Titanosauria  
 Saurischia: Theropoda  
 Ornithischia: Ceratopsia

**BURUNDI****2013 August 5** (Haroun Tazieff [1914-88] geologist and volcanologist)

1345a	90fr	Tazieff & Nyiragongo Volcano, Congo	
1345b	1190fr	<i>Tyrannosaurus</i> (Redoubt Volcano, Alaska)	Saurischia: Theropoda
1345c	3000fr	<i>Compsognathus</i> (Ulawun Volcano, Papua New Guinea)	Saurischia: Theropoda
1345d	3000fr	Tazieff & Mount Etna, Sicily	
1365	SS 7500fr	<i>Pteranodon</i> (Tazieff & Mount Etna)	Pterosauria: Pteranodontidae

**2013 August 20** (Dinosaurs)

1389a	1020fr	<i>Tyrannosaurus rex</i>	Saurischia: Theropoda
1389b	1180fr	<i>Nasutoceratops</i>	Ornithischia: Ceratosauria
1389c	3000fr	<i>Stegosaurus</i>	Ornithischia: Stegosauria
1389d	3000fr	<i>Plateosaurus</i>	Saurischia: Sauropodomorpha
1414	SS 7500fr	<i>Dollodon</i>	Ornithischia: Ornithopoda

**GUINEA-BISSAU****2013 March 25** (Prehistoric Ocean Reptiles) ([detailed record over last](#))

a	600fr	<i>Macroplata tenuiceps</i>	Sauropterygia: Plesiosauria
b	600fr	<i>Rhomaleosaurus</i>	Sauropterygia: Plesiosauria
c	600fr	<i>Elasmosaurus</i>	Sauropterygia: Plesiosauria
d	600fr	<i>Kronosaurus</i>	Sauropterygia: Plesiosauria
e	600fr	<i>Liopleurodon</i>	Sauropterygia: Plesiosauria
		MS of 5 (#a–e)	
	SS 2800fr	Water Dinosaurs, <i>Macroplata tenuiceps</i>	Sauropterygia: Plesiosauria
	Margin	UR: <i>Elasmosaurus</i>	Sauropterygia: Plesiosauria
		Bot: <i>Elasmosaurus</i>	Sauropterygia: Plesiosauria
		LL: <i>Kronosaurus</i>	Sauropterygia: Plesiosauria

**MOZAMBIQUE****2012 September 30** (Charles Darwin [1809-1882])

2661a	16m	<i>Sauropelta</i>	Ornithischia: Ankylosauria
2661b	16m	<i>Allosaurus</i>	Saurischia: Theropoda
2661c	16m	Darwin & monkey	
2661d	66m	<i>Ceratosaurus</i>	Saurischia: Theropoda
2661e	66m	Darwin & pages of <i>On the Origin of Species</i> (black denom)	
2661f	66m	Charles Darwin + microscope + finches – and around	
2661		MS of 6 stamps (Sc#2661a–f)	
	Margin	<i>Stegosaurus</i>	Ornithischia: Stegosauria
2691	SS 175m	<i>Euoplocephalus</i>	Ornithischia: Ankylosauria
	Margin	UL: <i>Pteranodon</i>	Pterosauria: Pteranodontidae
		R: <i>Plateosaurus</i>	Saurischia: Sauropoda

**ST. VINCENT (Bequia)****2013 September 27** (Dinosaurs) ([Note change of year from last issue](#))

\$2.75	<i>Zhenyuanopterus</i>	Pterosauria: Boreopteridae
\$2.75	<i>Stegosaurus</i>	Ornithischia: Stegosauria
\$2.75	<i>Torosaurus</i>	Ornithischia: Ceratopsia
\$2.75	<i>Sauropelta</i>	Ornithischia: Ankylosauria
\$2.75	<i>Styracosaurus</i>	Ornithischia: Ceratopsia
\$2.75	<i>Brontosaurus</i>	Saurischia: Sauropoda
	MS of 6 (with Theropod skeletons in margin background)	
\$4.75	<i>Tyrannosaurus</i>	Saurischia: Theropoda
\$4.75	<i>Camarasaurus</i>	Saurischia: Sauropoda
	SS of 2 (designs extend into margin)	

**BIRDS****PERU****2013 September 12** (Prehistoric Animals)1820 SS 10s Extinct penguin remains, *Inkayacu paracasensis* Neognathae: Sphenisciformes**AMPHIBIA****AUSTRALIA****2013 September 24** (Australia's Age of Dinosaurs)

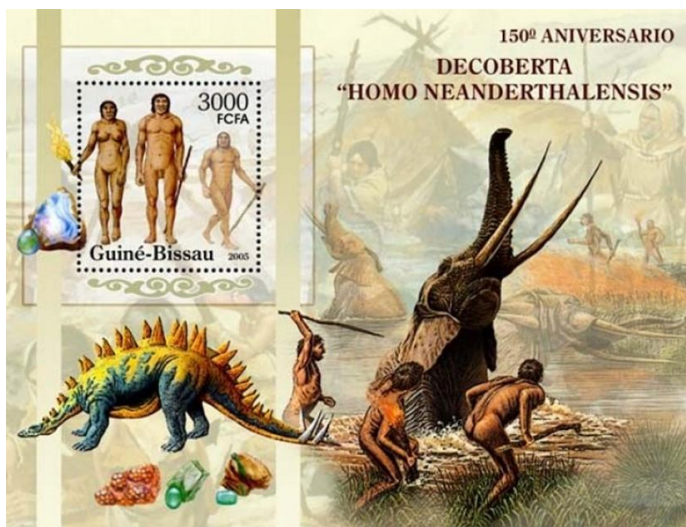
3986 60c *Koolasuchus cleelandi* Temnospondyli: Stereospondyli  
 3986a Bklt pane 4 (Sc#3986) (perf 14½×14)  
 3986b 60c Same amphibian (perf 14½) Temnospondyli: Stereospondyli  
 3991c SS of 6 (Sc#3986b, 3987b, 3988c, 3989b, 3990c, 3991b)  
 3992 60c *Koolasuchus cleelandi* Temnospondyli: Stereospondyli  
 3993a Bklt pane 10 (5ea Sc#3992–93) (s/a, die cut 11¼)

**NEANDERTHAL GENES**

[Ed. note. This item is based on an article by Geoffrey Mohan published in The Los Angeles Times on 29 January 2014, that itself was a report on genomic studies by Sankararaman, et al., published in the journal Nature, and by Vernot and Akey published in the journal Science.]

The authors of these studies report that anatomically modern humans overlapped and mated with Neanderthals such that non-African humans inherit between one and three percent of their genomes from Neanderthal ancestors. The studies were based on specific sequences of altered DNA that both Neanderthals and several hundred modern Europeans and Asians had in common.

The studies suggest that the strongest remnant of our Neanderthal heritage appears to be related to as-yet unknown changes in skin and hair that likely proved advantageous. The interbreeding between the two species likely occurred around 50,000 years ago and may have involved as few as 300 matings. According to Joshua M. Akey, a population geneticist from the University of Washington, and author of the studies, “Collectively, there is a substantial part of the Neanderthal genome that’s still floating around in the human population that’s just shattered into different pieces, and everyone has slightly different parts.” At least 20 percent of the Neanderthal genome is included in the genome of our European and Asian ancestors, with East Asians retaining slightly more of it, according to the study.



*Homo neanderthalensis*  
Guinea-Bissau

The Neanderthal genome project has made large advances in the past several years in the understanding of our closest human relatives, who vanished about 28,000 years ago. Other studies have traced important immune system genes to Neanderthals and another extinct group, the Denisovans. Scientists are working to determine what other advantages or disadvantages we may have inherited from these distant relatives.

On 15 July 2005, Guinea-Bissau issued a MS of five plus five labels and a SS to commemorate the 150th anniversary of the discovery of Neanderthal remains.

The SS depicts the robust bodies of a male and female Neanderthal with a group of hunters attacking a trapped mammoth in the margin. It also includes an anachronistic image of a stegosaurus, a species that went extinct 150 million years before Neanderthals came into existence.

**Reference:**

<http://www.latimes.com/science/sciencenow/la-sci-sn-neanderthal-genes-20140129,0,1218853.story>

## BIOLOGY REFERENCE WEBSITES

This section contains a listing of web links to on-line references relating to biology topics on stamps and general philatelic information. We are providing this information to assist members in research and not to endorse the sites listed in any way. If readers know of, or use other useful sites, please send the links to your editor and we will include them in future editions. New entries since the last publication are indicated with an asterisk (\*).

### STAMP ISSUES

**Cyber Stamps.** On-line postage stamp catalogue of worldwide topical issues.

<http://www.cyberstamps.com>

**Delcampe.** Worldwide listings and illustrations of stamps for sale.

<http://stamps.delcampe.net/page/category/cat,-1,language,E.html>

**Neofila.** Modern issues from Russia, Eastern Europe, and Baltic States.

<http://www.neofila.com/>

**Stamperija.** Listings and illustrations of thematic issues from countries located in Africa, Asia, and Oceania produced by Stamperija, Ltd., under contract to several postal administrations.

<http://www.stamperija.eu/index.php>

**\*Stamp World.** Listings and illustrations of almost all issues from countries throughout the world. The site has a buy and sell section as well as news and events pages and other features. After registering you can search for issues by country, or use advanced search options.

<http://www.stampworld.com/>

**Stanley Gibbons.** Searchable on-line stamp catalogue from Stanley Gibbons.

<http://www.allworldstamps.com/>

**\*Virtual Stamp Club.** Comprehensive listing with links to the websites of societies (including ATA study units), dealers, philatelic resources, publications, shows, auctions, and much more. You can spend days here.

<http://www.virtualstampclub.com/hotlink.html>

**Zillions of Stamps.** Worldwide listings and illustrations of stamps for sale.

<http://www.zillionsofstamps.com/>

### GENERAL

**Fauna-Stamps.** Listings of stamps for sale (mainly new issues) on all sorts of biological themes including Cats, Dogs, Horses, Birds, Butterflies, Paleontology, Flora, and WWF animal stamps.

<http://www.fauna-stamps.com/>

**Tree of Life Web Project.** Worldwide collaborative effort to map the genome of every organism on earth and to establish their relationships to one another.

<http://www.tolweb.org/tree>

**Zip Code Zoo.** Links to taxonomic identification for all areas of biology.

<http://zipcodezoo.com/>

### BOTANY

**Encyclopedia of Plants.** All kinds of information about plants including cultivation. Searchable by common name or scientific name. Grouped by plant types.

<http://www.botany.com/>

**Fungal Biodiversity Center.** Dutch site under the Royal Netherlands Academy of Science and Arts dealing with the taxonomy and evolution of fungi. Includes searchable taxonomic databases.

<http://www.cbs.knaw.nl/>

**International Association for Plant Taxonomy.** Links for the standard codes on taxonomy and nomenclature for algae, fungi, and plants.

<http://www.iapt-taxon.org/nomen/main.php>

**Lichens of North America.** Many photos of lichens and links to related sites.

<http://www.lichen.com/>

### MAMMALS

**Feline Philately Homepage.** All sorts of cat stamps, postmarks, and related articles.

<http://www.catstamps.org/>



**ICHTHYOLOGY**

**FishBase.** A searchable database developed at the WorldFish Center in Taiwan in collaboration with the Food and Agriculture Organization of the United Nations. Contains all you ever wanted to know about fishes.

[http://fishbase.sinica.edu.tw/home\\_tw.htm](http://fishbase.sinica.edu.tw/home_tw.htm)

**ENTOMOLOGY:**

**Cercopoidea Organised On Line.** Taxonomic database operated under the auspices of *Université Pierre-et-Marie-Curie* in Paris and dedicated to the insects Cercopoidea, which belong to the Hemiptera order.

<http://rameau.snv.jussieu.fr/cool/index.php>

**FUNET.** Finnish university share network site containing updated taxonomic listings for insects, especially Lepidoptera. It also has limited listings for mammals, birds, and plants.

<http://www.nic.funet.fi/pub/sci/bio/life/intro.html>

**International Odonata Research Institute.** Information about dragonflies and damselflies, including listings by geographical area, taxonomy, and links to related sites.

<http://www.iodonata.net/>

**Natural History Museum.** British site containing Lepidoptera generic names and type species listings.

<http://www.nhm.ac.uk/research-curation/research/projects/butmoth/>

**HERPETOLOGY:**

**AmphibiaWeb.** Provides access to information on amphibian declines, conservation, natural history, and taxonomy. Includes an on-line database of species and links to many related sites.

<http://amphibiaweb.org/index.html>

**The Reptile Database.** Uetz, P. (Ed.). Taxonomic database that provides basic information about all living reptile species, such as turtles, snakes, lizards, and crocodiles, as well as tuataras and amphisbaenians, but does not include dinosaurs.

<http://reptile-database.reptarium.cz/>

**Sea Turtle Postage Stamps of the World.** Shows over 1800 images of stamps, maxi cards, covers, and cinderellas that feature the sea turtle as the subject. Includes checklists by country, new issues, and links to many related sites.

<http://www.2xtreme.net/~nlinsley/>

**World-Wide List of Turtles and Tortoises on Stamps.** This on-line listing was produced by Donald N. Riemer, a former member of the Biology Unit and contributor to this journal, who passed away in June 2012. The site contains a checklist of stamps by country along with appendixes listing labels, cinderellas, turtle look-alike stamps, and post offices with “turtle” or “tortoise” in their name.

<http://www.personal.psu.edu/crr2/turtstmp/>

**ORNITHOLOGY**

**Birds of the World.** All sorts of bird stamps by country and species, including new issues.

<http://www.bird-stamps.org/>

**Birds on Stamps.** Listings of local, unofficial, and cinderella issues featuring birds—last updated in 2007.

<http://www.birdstamp.com/>

**Theme Birds on Stamps.** All sorts of bird stamps by country and species, including new issues.

<http://www.birdtheme.org/>

**PALEONTOLOGY:**

**Dinosaur Illustrations.** Galleries of dinosaur illustrations by species. Includes links to paleontology stamp sites and other related sites.

<http://www.search4dinosaurs.com/>

**Paleophilatelic.** Catalogue of Paleontology related philatelic items, such as paleontologists, fossils, prehistoric animals, dinosaurs, early man, museums on official post stamps, envelopes, and post cards. Contains links to related news items and sites.

<http://www.paleophilatelic.eu/index.html>

## GLOSSARY OF TERMS

This section lists the definitions of acronyms, abbreviations, and code letters used throughout this journal. This listing does not include abbreviations used for the name of a taxonomic author, or commonly used symbols.

### Checklist Codes:

Br	Branch	A	Subject is the primary design element
Fl	Flowers (with or without other plant parts)	B	Subject is only part of the main design
Fr	Fruit (including seeds, nuts, grains, etc.)	C	Subject is a minor representation
FrV	Grain head with sheaf or stalk	G	Subject is a generalized depiction
L	Lichen	R	Related subject (e.g., scientist, equipment)
M	Mushroom or fungus	S	Subject is a stylized or symbolic depiction
T	Trees (without flowers or fruit)	U	Subject is unidentified or unidentifiable
V	Various (vines, vegetables, roots, leaves, etc.)	X	Subject is a lookalike (e.g., mushroom cloud)
Wr	Wreath	Z	Subject is in the margin or selva
Wr*	Head wreath (or chaplet)	*	Subject depicted in natural colors

### Acronyms and Abbreviations:

AAPE	American Association of Philatelic Exhibitors	ovpt	overprinted
anniv	anniversary	perf	perforated
APC	American Philatelic Center (Bellefonte, PA)	photo	photogravure
APS	American Philatelic Society	ptg	painting or artwork
ATA	American Topical Association	R	right position indicator
bkl	booklet	s/a	self-adhesive
Cap	captioned	Sc#	Scott Catalogue number
CTO	canceled to order	s-o-s	stamp on stamp
CTR	center position indicator	sp.	species
DS	deluxe sheet	SS	souvenir sheet
Ed.	Editor	ssp.	sub-species
Expo	Exposition	s/t	se-tenant
horiz	horizontal orientation	surch	surcharged
imperf	imperfurate	UL	upper left position indicator
Intl.	International	unwmk	un-watermarked
L	left position indicator	UPU	Universal Postal Union
litho	lithography	UR	upper right position indicator
LL	lower left position indicator	US	United States
LR	lower right position indicator	USPOD	United States Post Office Department
mm	millimeter	USPS	United States Postal Service
MS	miniature sheet	var.	variety
ML	middle left position indicator	vert	vertical orientation
MR	middle right position indicator	Vol	Volume
N/A	not applicable (or not available)	wmk	watermarked
nd	non-denominated	w/o	without
NTSS	National Topical Stamp Show	WWF	World Wildlife Federation
NWF	National Wildlife Federation	Yv#	Yvert & Tellier Catalog number

## EDITOR BIOGRAPHIES

This section completes our series of biographical information about our editors that we began in the Volume 62, Number 1. The Associate Editors continue a long tradition in *Biophilately* of providing research data and expert commentary on both philatelic matters and biological topics. Many of them are also authors of some of the checklists and handbooks published by the ATA.

### Glenn G. Mertz

[*Ed. Note: Glenn Mertz joined the Biology Unit in 1987. He took over as Associate Editor of the Ornithology column from Randall Shore in 2006.*]

Glenn graduated from high school in 1962, and married in 1964. He started work at a public utility company right out of high school, and continued there for 41 years, retiring in March 2003, at age 59. During the years, he moved up the corporate ladder to his final position as Administrator of Customer Accounting, responsible for working with the Information Technology section in getting computer programming for the area customer accounting sections, meter reading departments, central telephone answering section, and credit departments.

Glenn started collecting U.S. stamps in 1964 and collected them until 2005, when it became too difficult to acquire the multitude of issues due to the policy of having to purchase whole sheets or whole rolls of stamps to get just the particular items desired.

Glenn has been collecting bird stamps since about 1970 and has accumulated a very large collection, which he houses in three-ring, two inch binders, by family. He started using the 2nd Edition of Clements Checklist of Birds of the World as a guide and graduated to each new edition that came out. The 6th Edition is his current bird checklist. Since Cornell University took over the publication upon the death of James F. Clements, they, in conjunction with the American Birding Association and the Cornell Laboratory of Ornithology, have published updates for the past five years, in collaboration with the various birding associations of the world. In addition, he created his own spreadsheet, using the 6th Edition of Clements, so that he can also keep track of all the changes and denote which of the ten thousand plus species have had a stamp produced for the bird in the Clements listing.

Glenn says he very much enjoys his hobby of collecting stamps with birds and mounting them in his albums by each family. It enables him to see all of the bird stamps within one family and see the various renditions, poses, and colors of each of the birds. He now has 13 albums of just stamps depicting birds.

Glenn and his wife Barbara (who will celebrate their 50th anniversary this year) also attend many first day stamp ceremonies for new U.S. issues, that are within four or five hours driving time. Many ceremonies are very interesting, educational.



Glenn G. Mertz

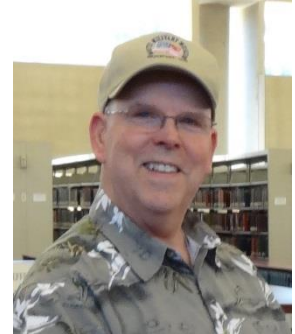
**Jack R. Congrove**

*[Ed. Note: Jack Congrove joined the Biology Unit in 1987. He contributed his first article to the journal in 1991. In 2010, he was appointed to the Governing Board as a Director. In 2011, he assumed overall editorship of the journal upon the retirement of Alan J. Hanks.]*

Jack grew up on a dairy farm in Ohio and received a degree in Chemical Engineering from Ohio University in 1969. He was commissioned as a Field Artillery officer upon graduation and served in places such as Vietnam, Syria, Lebanon, Egypt, and Germany with the U.S. Army before retiring in 1990. Following his Army career, he has worked more than 20 years with various contractors supporting military tests and evaluations.

Jack began collecting stamps as a youngster, but like many others put collecting on hiatus until returning to it in the early 1980s. He collects mint and used U.S. stamps and both U.S. military history and butterfly topical stamps and ephemera. He has an award winning exhibit on the life of Alexander Hamilton and is preparing another exhibit on Lepidoptera and their defensive mechanisms.

In addition to the ATA and the Biology Unit, Jack is a member of the American Philatelic Society, American Association of Philatelic Exhibitors, Women Exhibitors, Military Postal History Society, Americana study unit of the ATA, and the Evergreen Stamp Club. He was recently elected President of the Board of the Seattle Philatelic Exhibition (SEAPEX).



Jack R. Congrove