

BIOPHILATELY

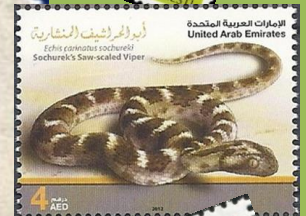
OFFICIAL JOURNAL OF THE BIOLOGY UNIT OF ATA

JUNE 2013

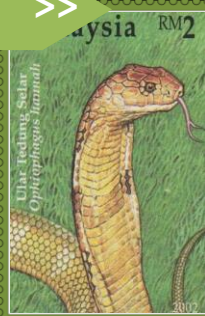
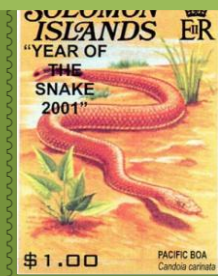
VOLUME 62, NUMBER 2

The Snake Will Smoke!

Biology Unit
Annual Meeting



More Inside >>



IN THIS ISSUE

From the Editor's Desk	77
President's Message	79
Secretary-Treasurer's Report.....	80
New Members	80
Biology Unit Annual Meeting	82
NTSS 2013 Report	91
Journal Index Update.....	95
Distinguished Topical Philatelist.....	101
Editors Biographies	143

NEW ISSUES:

Botany – Christopher E. Dahle	85
Fungi – Paul A. Mistretta	93
Mammalia – Michael Prince.....	97
Ornithology – Glenn G. Mertz.....	103
Ichthyology – Kris P. Lindstrom	120
Entomology – Donald Wright, Jr.....	128
Paleontology – Hans-Peter Schultze..	136

ARTICLES & ILLUSTRATIONS:

Stamp Stories – Jack R. Congrove.....	83
Baltimore Oriole – Sarah Andrews	96
Serpent in a Bottle.....	101
Stamps Lack Animal Diversity	102
Bird of the Year	114
New Birds in the Philatelic Aviary – Charles E. Braun	115
Frightful Hairy Fly – Don Wright.....	135
Biology Reference Web Sites	141

BIOPHILATELY**Editor**

Jack Congrove
P.O. Box 33092, Fort Lewis, WA 98433, USA
jackcongrove@comcast.net

Publisher

Dick Roman
Dick.Roman@SbcGlobal.Net

Associate Editors

Christopher E. Dahle *Botany*
1401 Linmar Dr. NE, Cedar Rapids, IA 52402
chris-dahle@fastermac.net (new)

Paul A. Mistretta *Fungi*
4148 Commodore Dr., Atlanta, GA 30341
paulmistretta70@gmail.com (new)

Michael J. Prince *Mammalia*
"Dorset," Grove Road, Ash Vale, Aldershot, Hants. U.K.
Michael.Prince@bushinternet.com

Glenn G. Mertz *Ornithology*
625 N. Lafayette St., Allentown, PA 18104
ggmertz@juno.com

Charles E. Braun *New Birds*
7 Winthrop Drive, Aiken, SC 29803
ChuckBraun@aol.com

Kris P. Lindstrom *Ichthyology*
P.O. Box 51008, Pacific Grove, CA 93950
kplenviro2@sti.net

Ian Hunter *Invertebrate Zoology*
77 Edgevalley Way N.W., Calgary, AB
T3A 4X7, Canada
ighunter@shaw.ca

Donald P. Wright, Jr. *Entomology*
84 Woosamonsa Rd., Pennington, NJ 08534
don.aa2f@verizon.net

Dr. Hans-Peter Schultze *Paleontology*
2001 Vermont, Lawrence, KS 66046
hp1937@ku.edu

BIOLOGY UNIT OF ATA

Alan J. Hanks **President**
34 Seaton Drive, Aurora, ON Canada L4G 2K1

(vacant) **Vice-President**

Christopher E. Dahle **Secretary/Treasurer**
1401 Linmar Dr. NE, Cedar Rapids, IA 52402

Directors

Jack R. Congrove (Washington)
Lois C. Herrmann (New Mexico)
Dr. Frederick C. Skvara (New Jersey)
Donald P. Wright, Jr. (New Jersey)

International Secretary

(vacant)

Librarian

Mark Reineke
925 Boychuk Drive, Saskatoon, SK
S7H 4L6 Canada
mikadoate@sasktel.net

Web Site

www.biophilately.org

The Biology Unit, founded in 1951, is a study unit of the American Topical Association dedicated to the international cooperative study of biological postage stamps and related material.

Back copies of *Biophilately* are available from the Librarian. Copies of separate articles are available at a charge six cents per page. Please contact the individual associate editors if you have queries about the content of their columns.

Send membership enquiries and change of address notices to the Secretary, Chris Dahle, (319) 364-4999. See the following page for dues rates.

The purpose of this journal is to provide members with informative articles dealing with biological topics and to publish listings covering the new **zoological** and **botanical** issues of the world, identified and classified to the best of our ability.

Please send letters, comments on the journal, articles, or new material to the Editor (data above). The Publisher will handle requests for issues from the current year. Contact the Librarian (address above) for copies of all other issues.

NOTE: Please provide a self-addressed envelope with the necessary return postage (or International Reply Coupons, if available) for all enquiries requiring an answer.

The term Scott and Scott Catalogue numbers are trademarks of Amos Philatelics, Inc., dba Scott Publishing Company.

PLEASE NOTE: Material for the next issue should be in the hands of the Editor before 15 August 2013.

FROM THE EDITOR'S DESK

This edition of *Biophilately* should arrive in your possession closely following the 2013 National Topical Stamp Show where the Biology Unit held its annual membership meeting. See page 82 for a report on the annual Unit meeting and page 91 for a description of the NTSS events.

One of the key topics under discussion at the meeting was the nomination of candidates for election of the Unit officer positions. You will find a separate ballot containing these nominations enclosed with this copy of the journal. Please make your selections and return it as soon as possible, but **not later than 15 July 2013** to the Secretary, Chris Dahle. The officer positions include President, Vice-President, Secretary-Treasurer, and four Unit Directors. We will publish the results in the next edition of *Biophilately*.

I have noticed from advertising in the new issues services that there seem to be no small amount of stamp issues currently being offered commemorating 2013 as the Year of the Snake in the Chinese zodiac. In keeping with that theme, this edition of *Biophilately* provides some snake-related articles that I hope you will find interesting. Unfortunately, I have not been able to lock in a permanent Associate Editor for Herpetology, but I am still actively seeking someone to take on this role. Please contact me, if you are interested.

On page 143, you will find more of our continuing column introducing our Associate Editors. This quarter we feature our New Birds editor, Chuck Braun, and our Paleontology editor, Dr. Hans-Peter Schultze.

Naturally you will also find the regular quarterly checklists of new issues in this edition. There is a bonus in the "Mammalia" section as it contains the entries that missed the deadline for the last issue as well as those for the current edition. This time as I was editing the lists, I recalled recently looking over the very early editions of the journal from the 1950s. In those times, the listings of **all** new biological issues could fit on a single page. It is amazing how far topical collecting has come. Some Unit members in those days collected every type of issue with a biological theme. Even if one could afford it, I do not see how one could manage to do that today.

One of our former Biology Unit members has been selected as American Topical Association 2013 Distinguished Topical Philatelist. Jean C. Stout (BU1801) joined the Unit in 2009, but later dropped out to concentrate on the Penguins on Stamps Study Unit, which she co-founded. Last year's DTP was our own Director, Fred Skvara. In fact, 26 of the 120 DTP recipients have been members of the Biology Unit, so our Unit is doing pretty well. See page 101 for more about this year's winner.

For readers who may not be aware, the Biology Unit is now in its sixty-second year and is the second oldest study unit in the American Topical Association behind the Casey Jones Railroad Unit. Our Unit from the very beginning began publishing a newsletter that ultimately evolved into the journal you are reading. (I was going to write "the journal you now hold in your hands," but I realized that many of our members no longer receive a printed copy. Instead they view the journal on-line or download it from our web site.)

Fred Skvara has started republishing older articles in *Scalpel and Tongs*, the journal of the Medical Subjects Unit, and it occurred to me that the earlier editions of our journal might contain interesting and useful reference articles that none of the current members have ever read, or even know exist. So, I decided to begin a project to index all of the previous editions and see if I could find items to re-publish occasionally. Our librarian, Mark Reineke, has been a big help providing scans of older editions, and ultimately we plan to have all of these available in electronic format. It is not much good to have an index to publications you cannot access. There are some immense complications involved, which I shall describe at a later date.

DUES RATES (US\$)

Regular membership (US & Canada)	\$20
Overseas membership	\$25
Overseas airmail (add)	\$10

ADVERTISING RATES

Full page insertion	\$20
Half page insertion	\$10
Quarter page insertion	\$5

Please see the Biology Unit web site (www.biophilately.org) for membership applications. Several payment options are available. Send applications and payments payable to the Biology Unit of ATA to:
Chris Dahle, 1401 Linmar Drive NE, Cedar Rapids, IA 52402

As I have read through editions from the past, one theme continues throughout the span of publication, and that is the requests for input from Unit members. So many issues are filled with articles and commentary from the journal editor with lesser input from other contributors. When the editors have been articulate and informed, this has provided interesting reading despite the lack of variety. When editors have been less erudite, the content has suffered. I am perfectly happy to fill up the journal with my own ramblings on various subjects, but I suspect the readership will tire of this in short order and this publication is not titled "The Congrove Newsletter." More importantly, one of the primary purposes of this organization is to serve as a **cooperative study unit** so that every member might provide some of their expertise and gain some knowledge from others in return.

It is inevitable that many members do not contribute anything other than their membership dues to the organizations that they join. What is concerning is that these members possess knowledge that would be at least informative and more likely useful and educational to the rest of the Unit members.

In an editorial in Volume 11, Number 3, Dr. Willard F. Stanley lamented the lack of responses from the membership to repeated pleas for help with various Unit projects and for input for the journal. He acknowledged that everyone was "busy" with their many obligations and projects, but then presented this request that I believe is worthy of consideration by all of our members today:

"When I was a child, I played the part of the Devil in one Children's Day Program. My part considered the various ways by which I could be an effective devil. Finally, the decision reached was to gently persuade the various characters to—WAIT UNTIL TOMORROW. It is very effective! Please—don't listen to this devil. Jot down what comes to your mind—possibly on a post card—and get it to me. Also—put aside something else, this once, and send me that bit of information you have had such good intentions about."

In these days of more efficient and faster communications, it is not necessary to resort to post cards. Just send me an e-mail message to jackcongrove@comcast.net. There is no need to spend hours composing and formatting a submission. I will have to edit it to fit anyway. All I need are your ideas and a couple paragraphs. I can take care of the formatting and I am always looking for short articles to insert in partial pages. If it seems that we could expand your submission into a longer article, or even if you provide more extensive input, we can work together to easily tune it up. Please, do not "Wait Until Tomorrow."

Jack Congrove

PRESIDENT'S MESSAGE

Greetings once again from a distinctly summery Ontario, although we did have some hail and snow squalls yesterday. We have a Magnolia tree in our front yard and we can usually rely on it to give us a reasonable display of flowers. However, last year was a complete disaster, as we had early high temperatures followed by a killing frost. This year has more than made up for it, as the numerous Magnolias around the town had glorious displays of flowers over a fairly lengthy period.

Recently, I attended the ORAPEX stamp show held annually in Ottawa, Ontario and it was a real pleasure to spend a couple of days with many of my philatelic friends. The exhibits on display were of a very high order and a larger than usual number of gold medals were awarded. Many of the exhibits dealt with early Canadian Postal History and made very interesting reading.

Unfortunately, there were very few exhibits of a thematic nature and it seems that thematics are just not popular north of the border! As I have mentioned in previous columns, I have been working on the disposal of a large collection and I took a few binders of Canadian Revenue material with me. Much to my surprise, I was able to dispose of the whole lot, with a promise from one dealer that he would be happy to take more material!

Nest weekend (May 17-19), the annual show of the American Topical Association is being held in Rochester, New York, together with the annual ROPEX show, in effect two shows in one, and I am really looking forward to that, as I have quite a few acquaintances in the Rochester Philatelic Society as well as many in the ATA. For a number of years, I have been charged with one pleasant duty, which is to find a prize to be awarded to the best exhibit of a biological subject in any category at the annual ATA show. Usually I manage to find a book and I hope that the awards have given some pleasure to the lucky winners.

Until next time...

Alan J. Hanks



Flora & Fauna

New issues  FDCs and Stamps

www.fauna-stamps.com

 **Philately Company s.r.o.**
Radouňova 2681/24, 155 00, Prague, Czech Republic
E-mail: info@fauna-stamps.com / Telefon: + (420) 773 133 955

SECRETARY-TREASURER'S REPORT

The current membership is 132. Of these, 32 are Life Members. Six members were dropped for non-payment of dues. We have had seven members join since July 2012.

The current assets of the Biology Unit are:

Checking account	\$17,398.19
PayPal account	<u>281.82</u>
Total	\$17,680.01

Expenses June 2012 to May 2013:

Advertising (NTSS program)	\$35.00
Credit card fees to ATA	16.00
Domain name	13.95
NTSS Award	10.50
PayPal charges	3.04
Post office box rental	76.00
Postage Canada	53.70
Postage Foreign	279.73
Postage U.S.	409.30
Printing	669.86
Supplies	77.07
Sales tax	40.14
Web charges	<u>101.49</u>
Total	\$1,785.78

Income June 2012 to May 2013:

Dues	\$1,148.92
Donations	<u>220.00</u>
Total	\$1,368.92

The good news is our operating loss was reduced in 2012–13 from \$836.16 during the previous year to \$416.86 this year. The bad news is we still had a loss for the current year.

NEW MEMBERS

The Biology Unit welcomes the following new member:

1836 Skog, Laurence; Vienna, VA

(2)

GLOSSARY OF TERMS

This section lists the definitions of acronyms, abbreviations, and code letters used throughout this journal. This listing does not include abbreviations used for the name of a taxonomic author, or commonly used symbols.

Checklist Codes:

Br	Branch	A	Subject is the primary design element
Fl	Flower	B	Subject is only part of the main design
Fr	Fruit (including seeds, nuts, grains, etc.)	C	Subject is a minor representation
FrV	Grain head with sheaf or stalk	G	Subject is a generalized depiction
L	Lichen	R	Related subject (e.g., scientist, equipment)
M	Mushroom or fungus	S	Subject is a stylized or symbolic depiction
T	Tree	U	Subject is unidentified or unidentifiable
V	Various (vines, vegetables, roots, leaves, etc.)	X	Subject is a lookalike (e.g., mushroom cloud)
Wr	Wreath	Z	Subject is in the margin or selva
Wr*	Head wreath (or chaplet)	*	Subject depicted in natural colors

Acronyms and Abbreviations:

AAPE	American Association of Philatelic Exhibitors	ovpt	overprinted
anniv.	anniversary	perf	perforated
APC	American Philatelic Center (Bellefonte, PA)	photo	photogravure
APS	American Philatelic Society	Ptg	painting or artwork
ATA	American Topical Association	R	right position indicator
bkl	booklet	s/a	self-adhesive
Cap	captioned	Sc#	Scott Catalogue number
CTO	canceled to order	s-o-s	stamp on stamp
DS	deluxe sheet	sp.	species
Ed.	Editor	SS	souvenir sheet
Expo	Exposition	ssp.	sub-species
horiz	horizontal orientation	s/t	se-tenant
imperf	imperforate	surch	surcharged
Intl.	International	UL	upper left position indicator
L	left position indicator	unwmk	un-watermarked
litho	lithography	UPU	Universal Postal Union
LL	lower left position indicator	UR	upper right position indicator
LR	lower right position indicator	US	United States
mm	millimeter	USPOD	United States Post Office Department
MS	miniature sheet	USPS	United States Postal Service
ML	middle left position indicator	var.	variety
MR	middle right position indicator	vert	vertical orientation
N/A	not applicable (or not available)	Vol	Volume
nd	non-denominated	wmk	watermarked
NTSS	National Topical Stamp Show	WWF	World Wildlife Federation
NWF	National Wildlife Federation		

BIOLOGY UNIT ANNUAL MEETING 2013

The Biology Unit held its annual meeting in the Main Street Armory at the National Topical Stamp Show in Rochester, New York on Saturday 18 May 2013. President Alan J. Hanks convened the meeting at 10:00 A.M. Other officers in attendance were the Secretary-Treasurer, Christopher E. Dahle, and Directors Jack Congrove, Lois Herrmann, and Frederick Skvara. Four other Unit members were present: Dawn Hamman, Jeff Hayward, Marcos Iglesias, and Charles Vaughn. Van Siegling from the ATA Board and Larry Rausch from the Rochester Philatelic Association attended as guests.

There being no outstanding old business, President Hanks opened the floor for discussion. The first topic involved the publication of *Biophilately*. The editor discussed the need for articles and the on-going indexing project for past issues. The ATA Board has proposed holding a literature competition for all the study unit journals at the next NTSS.

Also mentioned was the availability of the on-line version from the Unit web site. Chris Dahle, who serves as the web master for the Unit web site, asked for any recommendations for improving it.

Chris Dahle delivered a summary of the Secretary-Treasurer's Report (see page 80). Currently the Unit has a significant amount of funds in savings, but with the decline of membership, we are expending more each year than we take in. This is despite the fact that several members have provided donations during the past year in addition to their annual dues.

The Unit presented membership award certificates to members who have belonged to the Unit for 60, 50, and 40 years. We have two 60-year members: Dr. Carl J. Bajema and Dr. Beverly S. Ridgely who both joined the Unit in 1952. Two 40-year members were present to receive their certificates in person: Charles Vaughn and Alan Hanks. The others will receive theirs in the mail. See below for a listing of other membership awards.

Van Siegling gave a short presentation on the ATA and the support it provides to the study units. The ATA is one of the few philatelic organizations that is growing in membership.



The last order of business was to complete the nomination of candidates for election to the Unit officer positions. All incumbents agreed to run again. Jack Congrove nominated Larry Davidson for the vacant Vice-President position seconded by Alan Hanks. The board announced that ballots would be enclosed with the June 2013 edition of *Biophilately*. Members are to select their choices and return the ballots to the Unit Secretary not later than 15 July 2013. The meeting adjourned at 11:00 A.M.

50-year Members

Alan L. Steffen (1955)
Donald P. Wright, Jr. (1956)
Patricia E. Byrnes (1957)
Joseph L. Fibel, Jr. (1960)
Byron H. Bratlie (1962)
Roberta Glatz (1963)

40-year Members

Dr. Merrill W. Foster (1966)
Dr. George Griffenhagen (1968)
A. Ronald Law (1969)
Harold E. Walker (1969)
James L. Skaptason (1969)
Alan J. Hanks (1969)
Dona Jaquet (1970)
Roland K. Littlewood (1970)

Leslie R. Adler (1971)
Ellen B. Kritzman (1971)
Maurine Bouzek (1971)
Dorothy L. Truhon (1971)
Charles R. Vaughn (1971)
Peter A. Willmann (1972)
Dr. Don Ahshapanek (1972)
Harriet W. Brown (1973)

STAMP STORIES

Jack R. Congrove, BU1424

I want to use this edition of Stamp Stories to introduce a new historical series that will reprint updated versions of articles published in past editions of the Biology Unit journal. This story begins with a series of entries that appeared in Volume 6 of *Biology Tid-Bits* in 1956. The chain started with a “Can You Tell Us” request about a Brazilian stamp.

“What is the real significance of the snake smoking a pipe—the insignia of the Brazilian Expeditionary Force, as shown on Brazil Sc#636–639? There must be a story here.”

This answer appeared in the next edition shown with the editor’s comments in italics.

“Concerning the ‘Smoking Snake’” (Brazil Sc#636–639)

The following letter is from a non-member who wishes his name withheld. We appreciate his reply and are intrigued by how he saw the question.



“I believe here’s the story back of the ‘Smoking Snake’ shoulder patch used by the Brazilian Expeditionary Forces during World War II.

“The final action which brought Brazil into the war was the sinking, by submarines, of a large part of Brazil’s commercial fleet, largely coastwise vessels.

“After these sinkings there was, understandably, considerable bitterness against the Germans. A Brazilian, conversing with a German, was told that all the Brazilians were capable of doing was to make a lot of noise verbally, which bothered none. The Brazilian replied that if Germany’s attacks on neutral Brazilian shipping continued, the day would come when Brazilians would be in the trenches in Europe and the Germans would see for themselves that Brazil could fight physically as well as verbally. The German replied that when that day came, the Germans would also see snakes smoking pipes.

“I was in Brazil during the entire war and heard this story many times; naturally, in Para the hero was Paraense, in Rio a Carioca, etc., but the foregoing paragraphs will, I believe, correctly answer your question.”

However, that was not the end of the story, for in the following edition another explanation was presented.

“That Smoking Snake Again”

In the September 1st issue of Western Stamp Collector, editor William W. Wylie, in his “Worth Mentioning” column, mentioned the new Biology Tid-Bits and requested information on Brazil’s “Smoking Snake,” as requested in that issue.

Mr. Wylie has kindly forwarded a letter from Lt. Cmdr. George F. Thometz of the U.S. Coast Guard. That part directly concerning the smoking snake is reproduced below:

“During 1944, I served aboard the USS General M.C. Meigs, one of two U.S. troop transports engaged in transporting Brazilian troops from Rio de Janeiro to Naples, Italy. The most popular song of the Brazilian troops was one entitled *Cobra Esta Fumando*, meaning ‘the snake is now smoking.’

“It seems that the Brazilian people are very adept at training animals, birds, and all pets to do all kinds of tricks and stunts, but no one had ever been able to train a snake to smoke. When Brazil declared war on Germany, they had no transports to send troops to the fighting area and people were beginning to believe that, although Brazil was at war, they would never have a chance for their troops to participate in the actual fighting.

“The saying in Rio was that the troops would go overseas when snakes started smoking, in other words, never. However, when the United States made provisions to transport Brazilian troops to

Italy aboard the USS Meigs and the USS General Mann, the Brazilian troops made up the song, *Cobra Esta Fumando*, meaning the snake is now smoking and we are going to participate in the fighting. It was quite a popular marching song comparable to the marching songs of our troops in World War I.

“...This history of the picture of the snake smoking can be verified, I’m sure, through any Brazilian Consul or Embassy...”

We are grateful to both of these gentlemen for their interest and their courtesy, which has made possible the sharing of this version of the smoking snake with you. We will follow up Commander Thometz’s suggestion of consulting Brazilian officials and report our findings in these pages.

Unfortunately, it appears that either there was no follow-up, or the results were negative, because the journal contains no further explanations regarding this stamp issue.

Few people today know that, of all the South American countries, only one provided troops that saw overseas combat during WWII. The other countries remained officially neutral, or joined the Allied side only late in the war. This stamp honors the troops of the Brazilian Expeditionary Force (FEB) that fought in the invasion of Italy as part of the U.S. 5th Army under General Mark Clark.



The Smoking Snake is the second lowest denomination in a set of five issued on 18 July 1945 (Sc#635–39). The other values in the set were 20 centavos and 1, 2, and 5 cruzeiros. The four remaining stamps show the 5th Army shoulder patch and the three high values also show the Smoking Snake patch.

This set was printed by lithography on paper watermarked CASA+DA+MOEDA+DO+BRASIL and perforated 11. Some imperforate and un-gummed examples also exist.



Earlier, on 8 May 1945, Brazil had issued another stamp that also shows the smoking snake, although you almost need a magnifying glass to see it. It appears on the highest value of a set of five stamps (Sc#628–32) issued to celebrate the Allied victory in WWII. It was printed by photogravure, also on watermarked paper and rouletted 7.



This stamp recognized international cooperation and showed the South Atlantic air ferry route traveled by military flights between the U.S. and Europe. This round-about path was necessary to enable short-range aircraft to fly across the Atlantic under their own power using a series of intermediate airfields and obviating the need to transport them by sea. My father, the crew chief of a C-47 aircraft, flew on part of this route during his return from Europe at the end of the war.



Brazil issued another stamp showing the Smoking Snake division patch on 8 September 1970 to commemorate the 25th anniversary of the Allied Forces victory in WWII. Whereas the previous set showed significant U.S. influence, even going so far as to depict an American flag, this stamp reflected more independence by showing only Brazilian military symbols. It was printed by lithography on unwatermarked paper and perforated 11×11½.

The 25,000 troops that Brazil sent to fight in Europe were completely integrated into the U.S. command structure. Brazil was also the only South American country to send air force units to fight overseas.

(See *Stamp Stories*, page 90)



BOTANY

Editor

Christopher E. Dahle, BU1269



New Listings

Scott#	Denom	Common Name/Scientific Name	Family/Subfamily	Code
ALGERIA				
2012 September 29				
1566	15d	Bousselam wheat, <i>Triticum vulgare</i> 'Bousselam'	Poaceae	Fr A
1567	20d	Mohammed Ben Bachir wheat, <i>Triticum vulgare</i> 'Mohammed Ben Bachir'	Poaceae	Fr A
1568	30d	Hedba wheat, <i>Triticum vulgare</i> 'Hedba'	Poaceae	Fr A
BULGARIA				
2012 October 18				
4614a	65a	God's Cowslip, <i>Primula deorum</i>	Primulaceae	Fl A SS Z
CANADA				
2012 November				
2591	(61c)	Personalized stamp: Maple leaves, <i>Acer saccharum</i>	Sapindaceae	V B
2597	(61c)	Personalized stamp: Holly leaves & berries, <i>Ilex aquifolium</i>	Aquifoliaceae	Fr V B
2013 March 4				
2621a	P (63c)	Yellow Bird Magnolia, <i>Magnolia</i> 'Yellow Bird'	Magnoliaceae	Fl A SS
2621b	P (63c)	Eskimo Magnolia, <i>Magnolia</i> 'Eskimo' Die cut 8¼	Magnoliaceae	Fl A SS
2622	P (63c)	Yellow Bird Magnolia, <i>Magnolia</i> 'Yellow Bird'	Magnoliaceae	Fl A
2623	P (63c)	Eskimo Magnolia, <i>Magnolia</i> 'Eskimo' Die cut 13½	Magnoliaceae	Fl A
2624	P (63c)	Yellow Bird Magnolia, <i>Magnolia</i> 'Yellow Bird'	Magnoliaceae	Fl A
2625	P (63c)	Eskimo Magnolia, <i>Magnolia</i> 'Eskimo'	Magnoliaceae	Fl A
CZECH REPUBLIC				
2012 September 5				
3546a	10k	<i>Dendrobium peguanum</i>	Orchidaceae	Fl A MS Z
3546b	14k	<i>Stanhopea tigrina</i> ; <i>Coryanthes fieldingii</i>	Orchidaceae	Fl A MS Z
3546c	18k	<i>Cattleya aclandiae</i> ; <i>C. maxima</i>	Orchidaceae	Fl A MS Z
3546d	20k	<i>Paphiopedilum charlesworthii</i> ; <i>P. insigne</i> ; <i>P. hirsutissimum</i>	Orchidaceae	Fl A MS Z
2012 October 3				
3548	A (10k)	<i>Paphiopedilum venustum</i>	Orchidaceae	Fl A
EQUATORIAL GUINEA				
2012				
303a	525fr	<i>Xylopiya aethiopica</i>	Annonaceae	
303b	625fr	West African Pepper, <i>Piper guineense</i>	Piperaceae	
303c	675fr	<i>Capsicum frutescens</i>	Solanaceae	
303d	725fr	Ginger, <i>Zingiber officinale</i>	Zingiberaceae	
FINLAND				
2013 January 21				
1421	€1.10	<i>Epidendrum parkinsonianum</i> (= <i>Coliostylis parkinsoniana</i>)	Orchidaceae	Fl A

FRENCH POLYNESIA**2012 December 13**

1089 500fr Matavai Bay: U/I tree T A U

GERMANY**2012 December 6**2407A 58c Pasque flower (khuschelle), *Anemone pulsatilla* Ranunculaceae Fl A
2416A 240c White gaura (prachtkerze), *Gaura lindheimeri* Onagraceae Fl A**GREAT BRITAIN (Jersey)****2013 January 8**1640 45p Paradise Belinda camellia, *Camellia sasanqua* 'Paradise Belinda' Theaceae Fl A
1641 55p Butcher's broom, *Ruscus aculeatus* Asparagaceae Fl A
1642 60p Snowdrop, *Galanthus nivalis* Amaryllidaceae Fl A
1643 68p Mistletoe, *Viscum album* Santalaceae Fl A
1644 80p Bramble, *Rubus fruticosus* Rosaceae Fl A
1645 88p Hawthorn, *Crataegus monogyna* Rosaceae Fl A**GUYANA****2012 (Sc#136, Sc#326, Sc#2360, & Sc#2361 surch in violet black)**4165 \$20 on 5c Annatto tree, *Bixa orellana* Bixaceae Fl A
4169 \$20 on 30c *Hymenaea courbaril* Fabaceae Fl A
4173 \$20 on \$8.90 *Epidendrum ibaguense* Orchidaceae Fl A
4179 \$20 on \$12.80 *Maxillaria parkeri* Orchidaceae Fl A**INDONESIA****2012 November 5**2328b 2500r *Kandelia candel* Rhizophoraceae V A
2329 5000r *Kandelia candel* Rhizophoraceae V A**IRAQ****2012 May 6**1860 250d Sunflowers, *Helianthus annuus* Asteraceae Fl A
1861 500d Gardenias, *Gardenia* sp. Rubiaceae Fl A
1862 750d Weasel's snouts, *Misopates orontium* Plantaginaceae Fl A
1863 1000d Carnations, *Dianthus caryophyllus* Caryophyllaceae Fl A
1864 1000d Flowers Fl A SS
Die cut
1865 250d Zinnias, *Zinnia elegans* Asteraceae Fl A
1866 500d Anemones, *Anemone* sp. Ranunculaceae Fl A
1867 750d Roses, *Rosa x hybrida* Rosaceae Fl A
1868 1000d Chrysanthemums, *Chrysanthemum* sp. Asteraceae Fl A**ITALY****2012 May 9**3120 60c Field of sunflowers, *Helianthus annuus* Asteraceae Fl B**2012 September 28**3139 75c Botanical Gardens: Rome V B U
3140 75c Botanical Gardens: Catania V B U**JAPAN****2012 September 4**3468 80¥ Plum blossoms, *Prunus mume* Rosaceae Fl A
Peonies, *Paeonia officinalis* Paeoniaceae Fl A**2012 September 11**

3469g,h 80¥ Glover Gardens Fl B U

2012 October 153482d 80¥ Strawberries (yellow flowers), *Fragaria ananassa* Rosaceae Fl Fr B MS Z
3482e 80¥ Strawberries (pink flowers), *Fragaria ananassa* Rosaceae Fl Fr B MS Z

JAPAN (continued)**2012 December 3**

3496	50¥	Camellia, <i>Camellia japonica</i>	Theaceae	Fl A
3497	50¥	Plum blossom, <i>Prunus mume</i>	Rosaceae	Fl A
3498	50¥	Adonis, <i>Adonis ramosa</i>	Ranunculaceae	Fl A
3499	50¥	Cyclamen, <i>Cyclamen persicum</i>	Primulaceae	Fl A
3500	50¥	Hellebore, <i>Helleborus</i> sp.	Ranunculaceae	Fl A
3501	80¥	Camellia, <i>Camellia japonica</i>	Theaceae	Fl A
3502	80¥	Plum blossom, <i>Prunus mume</i>	Rosaceae	Fl A
3503	80¥	Adonis, <i>Adonis ramosa</i>	Ranunculaceae	Fl A
3504	80¥	Cyclamen, <i>Cyclamen persicum</i>	Primulaceae	Fl A
3505	80¥	Hellebore, <i>Helleborus</i> sp.	Ranunculaceae	Fl A

2013 January 15

3506e	80¥	Narcissus, <i>Narcissus pseudonarcissus</i>	Amaryllidaceae	Fl A MS
-------	-----	---	----------------	---------

2013 February 1

5308b	50¥	Strawberry wreath, <i>Fragaria ananassa</i>	Rosaceae	Fr A Wr
5309b	80¥	Bouquet of red & pink flowers		Fl A U
5309c	80¥	Bouquet of blue & white flowers		Fl A U
5309d	80¥	Bouquet of yellow & orange flowers		Fl A U

2013 February 8

3510	50¥	Carnation, <i>Dianthus caryophyllus</i>	Caryophyllaceae	Fl A
3511	50¥	Tulip, <i>Tulipa x hybrida</i>	Liliaceae	Fl A
3512	50¥	Cherry blossoms, <i>Prunus mume</i>	Rosaceae	Fl A
3513	50¥	Gerbera daisy, <i>Gerbera x hybrida</i>	Asteraceae	Fl A
3514	50¥	Forget-me-not, <i>Myosotis scorpioides</i>	Boraginaceae	Fl A
3515	80¥	Carnation, <i>Dianthus caryophyllus</i>	Caryophyllaceae	Fl A
3516	80¥	Tulip, <i>Tulipa x hybrida</i>	Liliaceae	Fl A
3517	80¥	Cherry blossoms, <i>Prunus mume</i>	Rosaceae	Fl A
3518	80¥	Gerbera daisy, <i>Gerbera x hybrida</i>	Asteraceae	Fl A
3519	80¥	Forget-me-not, <i>Myosotis scorpioides</i>	Boraginaceae	Fl A

KOREA (South)**2012 April 5**

2381a	270w	Zelkova tree, <i>Zelkova serrata</i>	Ulmaceae	T A
2381b	270w	Trifoliolate orange tree, <i>Citrus trifoliata</i>	Rutaceae	T A
2381c	270w	Spring cherry tree, <i>Cerasus spachiana</i> f. <i>ascendens</i>	Rosaceae	T A
2381d	270w	Asian Fringe tree, <i>Chionanthus retusus</i>	Oleaceae	T A

LIECHTENSTEIN**2013 March 4**

1569	100rp	Mathematics & nature: Grape leaf, <i>Vitis vinifera</i>	Vitaceae	V A
1570	260rp	Mathematics & nature: Apple leaf, <i>Malus domestica</i>	Rosaceae	V A
1571	400rp	Mathematics & nature: Japanese maple leaf, <i>Acer palmatum</i>	Sapindaceae	V A

MALAGASY REPUBLIC**2011 February 16**

1623	100a	<i>Physena sessiliflora</i>	Physenaceae	Fl A
1624	200a	<i>Pentachlaena latifolia</i>	Sarcolaenaceae	Fl A
1625	300a	<i>Rhopalocarpus similis</i>	Sphaerosepalaceae	Fl A
1626	500a	<i>Asteropeia ambylocarpa</i>	Asteropeiaceae	Fl A

MALAYSIA**2012 May 24**

1393	60c	Kesum, <i>Persicaria minor</i> (= <i>Polygonum minus</i>)	Polygonaceae	V A
1394	\$1	Peppermint (pudina), <i>Mentha piperita</i>	Lamiaceae	V A
1395	\$5	Kaffir lime (limau purut), <i>Citrus hystrix</i>	Rutaceae	V A SS Z

MARSHALL ISLANDS**2013 February 22**

1053a	46c	Camellias, <i>Camellia sinensis</i>	Theaceae	FI A
1053b	46c	Camellias, <i>Camellia sinensis</i>	Theaceae	FI A
1053c	46c	Camellias, <i>Camellia sinensis</i>	Theaceae	FI A
1053d	46c	Camellias, <i>Camellia sinensis</i>	Theaceae	FI A
1053e	46c	Camellias, <i>Camellia sinensis</i>	Theaceae	FI A
1053f	46c	Camellias, <i>Camellia sinensis</i>	Theaceae	FI A
1053g	46c	Camellias, <i>Camellia sinensis</i>	Theaceae	FI A
1053h	46c	Camellias, <i>Camellia sinensis</i>	Theaceae	FI A

MOLDOVA**2012 August 10**

760	85b	Mildred Scheel rose, <i>Rosa</i> 'Mildred Scheel'	Rosaceae	FI A
761	1.201	Friesia rose, <i>Rosa</i> 'Friesia'	Rosaceae	FI A
762	31	Priscilla rose, <i>Rosa</i> 'Priscilla'	Rosaceae	FI A
763	4.201	Caribia rose, <i>Rosa</i> 'Caribia'	Rosaceae	FI A

MONACO**2013 January 13**

2709	€1.75	Intl Flower Arranging Festival		FI A U
------	-------	--------------------------------	--	--------

MONGOLIA**2012 October 20**

2756c	1200t	Customs officers: Marijuana leaf, <i>Cannabis sativa</i>	Cannabaceae	V B
-------	-------	--	-------------	-----

MONTSERRAT**2012 February 10**

1287a	\$2.75	Queen of the night cactus, <i>Selenicereus grandiflorus</i>	Cactaceae	FI A MS
1287b	\$2.75	Old man's whiskers cactus, <i>Cephalocereus senilis</i>	Cactaceae	FI A MS
1287c	\$2.75	Devil cholla, <i>Corynopuntia kunzei</i>	Cactaceae	FI A MS
1287d	\$2.75	Century plant, <i>Agave</i> sp.	Asparagaceae	FI A MS
1288a	\$3.50	Prickly pear cactus, <i>Opuntia</i> sp.	Cactaceae	Fr A SS
1288b	\$3.50	Prickly pear fruit, <i>Opuntia</i> sp.	Cactaceae	Fr A SS

2012 August 12

1295a	\$3	<i>Argyrochosma jonesii</i>	Adiantaceae	V A MS
1295b	\$3	<i>Danaea kalevala</i>	Marattiaceae	V A MS
1295c	\$3	<i>Lastreopsis effusa</i>	Dryopteridaceae	V A MS
1295d	\$3	<i>Asplenium serratum</i>	Aspleniaceae	V A MS
1296	\$6	<i>Phlebodium aureum</i>	Polypodiaceae	V A SS

MOZAMBIQUE**2011 December 30**

There are many mini-sheets listed in April 2013 Scott's Monthly New Issues from Mozambique. They seem of doubtful legality to me. Some of them have botanical motifs, but I have no way of identifying them, so I am omitting them from my listing. There are more of the same in the May "New Issues" section of *Linn*'s.

2480a	66m	Apple tree, <i>Malus</i> sp.	Rosaceae	T A MS
2480b	66m	Hawthorn tree, <i>Crataegus monogyna</i>	Rosaceae	T A MS
2480c	66m	Yellow birch tree, <i>Betula alleghaniensis</i>	Betulaceae	T A MS
2480d	66m	White poplar tree, <i>Populus alba</i>	Salicaceae	T A MS
2480e	66m	Black poplar tree, <i>Populus nigra</i>	Salicaceae	T A MS
2480f	66m	Horse chestnut tree, <i>Aesculus hippocastanum</i>	Sapindaceae	T A MS
2508	175m	Hornbeam, <i>Carpinus</i> sp.	Betulaceae	T A SS

NAMIBIA**2012 September 22**

1249b	\$5.10	Dune grass, <i>Stipagrostis sabulicola</i>	Poaceae	V A
-------	--------	--	---------	-----

NEPAL**2012 July 29**

873a	10r	<i>Delphinium himalayae</i>	Ranunculaceae	Fl A MS
873b	10r	<i>Dendrobium eriflorum</i>	Orchidaceae	Fl A MS
873c	10r	<i>Sinopodophyllum (=Podophyllum) hexandrum</i>	Berberidaceae	Fl A MS

NETHERLANDS**2012 July 16**

1421a	1 (50c)	Maple leaves (esdoorn), <i>Acer</i> sp.	Salicaceae	V A MS
1421b	1 (50c)	Ijsbloem, <i>Dorotheanthus</i> sp.	Aizoaceae	Fl A MS
1421c	1 (50c)	Snow peas, <i>Pisum sativum</i>	Fabaceae	Fr A MS
1421d	1 (50c)	Dahlia, <i>Dahlia x hybrida</i>	Asteraceae	Fl A MS
1421e	1 (50c)	Fritillaries (kievitsbloem), <i>Fritillaria</i> sp.	Liliaceae	Fl A MS
1421f	1 (50c)	Rowanberries (Ljisterbes), <i>Sorbus aucuparia</i>	Rosaceae	Fr A MS
1421g	1 (50c)	Purple coneflower (rode zonnehoed), <i>Echinacea purpurea</i>	Asteraceae	Fl A MS
1421h	1 (50c)	Rugosa rose (rose hips), <i>Rosa rugosa</i>	Rosaceae	Fl Fr A MS
		Rose geranium, <i>Pelargonium graveolens</i>	Geraniaceae	Fl Fr A MS
1421i	1 (50c)	Tulips, <i>Tulip x hybrida</i>	Liliaceae	Fl A MS
1421j	1 (50c)	Blueberries (Blauwe bes), <i>Vaccinium myrtillus</i>	Ericaceae	Fr A MS

NEW CALEDONIA**2012 August 6**

1136	180fr	<i>Amborella trichopoda</i>	Amborellaceae	Fl Fr A
------	-------	-----------------------------	---------------	---------

2012 September 25

1143c	110fr	<i>Pittosporum tianianum</i>	Pittosporaceae	Fl A SS
-------	-------	------------------------------	----------------	---------

2012 September 26

1144	75fr	Tree planting campaign, <i>Araucaria</i> sp.?	Araucariaceae?	T A
------	------	---	----------------	-----

2012 November 9

1147	75fr	Mangrove forest		V A U
------	------	-----------------	--	-------

NIGER**2011 October 19**

1121	500fr	Onions, <i>Allium cepa</i>	Amaryllidaceae	V A
------	-------	----------------------------	----------------	-----

NEW ZEALAND**2013 February 7**

2445	70c	Hen and Chickens fern, <i>Asplenium bulbiferum</i>	Aspleniaceae	V A
2446	\$1.40	Kidney fern, <i>Cardiomanes reniforme</i>	Hymenophyllaceae	V A
2447	\$1.90	Colenso's hard fern, <i>Blechnum colensoi</i>	Blechnaceae	V A
2448	\$2.40	Umbrella fern, <i>Sticherus cunninghamii</i>	Gleicheniaceae	V A
2449	\$2.90	Silver fern, <i>Cyathea dealbata</i>	Cyatheaceae	V A

PAKISTAN**2012 August 13**

1169a-d	8r	Roses, <i>Rosa x hybrida</i>	Rosaceae	Fl A
---------	----	------------------------------	----------	------

PALAU**2012 March 26**

1092a	\$1	Washington hawthorn, <i>Crataegus phaenopyrum</i>	Rosaceae	Fl A
1092b	\$1	Flowering dogwood, <i>Cornus florida</i>	Cornaceae	Fl A
1092c	\$1	Callery pear, <i>Pyrus calleryana</i>	Rosaceae	Fl A
1092d	\$1	Crabapple, <i>Malus</i> sp.	Rosaceae	Fl A
1092e	\$1	Magnolia, <i>Magnolia x soulangeana</i>	Magnoliaceae	Fl A
1092f	\$1	Eastern redbud, <i>Cercis canadensis</i>	Fabaceae	Fl A
1093	\$3.50	Cherry blossoms, <i>Prunus mume</i>	Rosaceae	Fl A SS Z

PALAU (continued)		2012 November 28			
1116a	\$1.20	Pale butterwort, <i>Pinguicula lusitanica</i>		Lentibulariaceae	Fl A MS
1116b	\$1.20	Corkscrew plant, <i>Genlisea</i> sp.		Lentibulariaceae	Fl A MS
1116c	\$1.20	Alice sundew, <i>Drosera aliciae</i>		Droseraceae	Fl A MS
1116d	\$1.20	Zigzag bladderwort, <i>Utricularia subulata</i>		Lentibulariaceae	Fl A MS
1117	\$3.50	King sundew, <i>Drosera regia</i>		Droseraceae	Fl A SS
PARAGUAY		2010 December 31			
2094	2000g	Rose, <i>Rosa x hybrida</i>		Rosaceae	Fl B
2905	6000g	Rose, <i>Rosa x hybrida</i>		Rosaceae	Fl B
UNITED STATES		2013 January 17			
4727	(46c)	Northern Spy apple, <i>Malus domestica</i> 'Northern Spy'		Rosaceae	Fr A
4728	(46c)	Golden Delicious apple, <i>Malus domestica</i> 'Golden Delicious'		Rosaceae	Fr A
4729	(46c)	Granny Smith apple, <i>Malus domestica</i> 'Granny Smith'		Rosaceae	Fr A
4730	(46c)	Baldwin apple, <i>Malus domestica</i> 'Baldwin'		Rosaceae	Fr A
		Coil, Die cut 11			
4731	(46c)	Northern Spy apple, <i>Malus domestica</i> 'Northern Spy'		Rosaceae	Fr A
4732	(46c)	Golden Delicious apple, <i>Malus domestica</i> 'Golden Delicious'		Rosaceae	Fr A
4733	(46c)	Granny Smith apple, <i>Malus domestica</i> 'Granny Smith'		Rosaceae	Fr A
4734	(46c)	Baldwin apple, <i>Malus domestica</i> 'Baldwin'		Rosaceae	Fr A
		2013 April 3			
4750	(46c)	Chinese hibiscus, <i>Hibiscus rosa-sinensis</i>		Malvaceae	Fl A MS
4751	(46c)	Cannas, <i>Canna indica</i>		Cannaceae	Fl A MS
4752	(46c)	Morning glories, <i>Ipomoea purpurea</i>		Convolvulaceae	Fl A MS
4753	(46c)	Passionflowers, <i>Passiflora quadrangularis</i>		Passifloraceae	Fl A MS

STAMP STORIES (from page 84)

Like a lot of slang (and urban legends), it is difficult to determine how these stories actually got started, and often no one really knows the answer. However, after doing some subsequent research on this topic, I was able to find out some details that are actually documented.

Brazil was neutral until 1942. Getúlio Vargas, the Brazilian dictator, was unwilling to become more involved in the Allied war effort, but permitted the U.S. to use some Brazilian airfields to stage maritime patrols in exchange for the promise of future U.S. industrial assistance. The Germans took issue with this policy and began actively attacking Brazilian ships. After experiencing extensive losses to its commercial shipping, popular support turned against the Germans forcing Vargas to side with the Allies. However, he was reluctant to send forces and using a popular saying, told a government session, "it's more likely for snakes to start to smoke now than for the BEF to set out." (*"Mais fácil uma cobra fumar do que a FEB embarcar."*)

Until the BEF entered combat, the expression "*a cobra vai fumar*" (the snake will smoke) was often used in Brazil in a context similar to "when pigs fly." Ironically, the soldiers of the BEF called themselves *Cobras Fumantes* (literally, Smoking Snakes) and wore the divisional shoulder patch depicted in the stamp that showed a snake smoking a pipe. It was also common for Brazilian soldiers to write on their mortar shells, "the Snake is smoking..." (*"a cobra está fumando..."*).

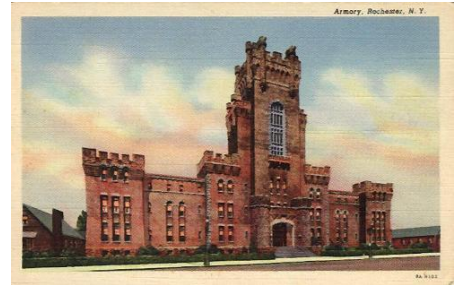
After the war, due to its usage by the Brazilian soldiers, the meaning became reversed, signifying that something will definitely happen and in a furious and aggressive way. With that second meaning, the use of the phrase *a cobra vai fumar* has been retained in Brazilian Portuguese until the present time, although few in the younger generations realize the origin of the expression.

NTSS 2013

Jack R. Congrove, BU1424

The American Topical Association held its annual National Topical Stamp Show in Rochester, New York 17–19 May. This year the ATA decided to join with the Rochester Philatelic Association to hold a combined show. Traditionally, the NTSS takes place in the month of June, but the Rochester Philatelic Exhibition (ROPEX) occurs in May, so the show was a month earlier than usual.

The two groups held the shows at the Main Street Armory in Rochester. This was a change from the original planned venue. The Sports Centre at Monroe Community College, which had been the usual site, was undergoing some renovation forcing the move. The Armory is an impressive, castle-like building, but in my opinion, it did not provide a very good place for a stamp show. The lighting was inadequate for the exhibits and made it difficult for viewers to see the material in at least two of the rows. The meeting rooms were also problematic. In addition, there seemed to be no hotels or eating establishments near the Armory and the show hotel was several miles away.



Main Street Armory

Both shows highlighted the railroad theme. ROPEX focused on the 100th Anniversary of New York City's Grand Central Terminal, the Empire State Express Engine 999, and the Trans-Continental Railroad. The ATA features a selected study unit for each NTSS and this year's featured unit was the Casey Jones Railroad Unit. As someone who finds railroads interesting and likes to ride trains from time-to-time, I enjoyed the featured theme.

One of the reasons for holding a combined show was to increase the number of dealers participating in the bourse and thus take advantage of the opportunity for both shows to interact with dealers that they might not otherwise encounter. This part of the plan seems to have paid off because there were almost 50 dealers offering every variety of philatelic items.

Another reason for combining the shows was to expose the public that normally attends ROPEX to the area of topical collecting with the hopes of attracting new members for ATA and its various study units. And on the flip side of this to enable topical collectors that attend NTSS to have access to dealers that they would not ordinarily see and provide exposure to traditional stamp exhibits that one does not always find at NTSS. The number of visitors was relatively sparse throughout the weekend and ATA only gained 12 new members.

Speaking of exhibits, both ROPEX and NTSS are World Series of Philately qualified shows and each had its own set of exhibits with separate juries and separate awards. The Grand Award winner from each show qualified for competition in the WSP Champion of Champions exhibit to be held at the American Philatelic Society Stamp Show this August in Milwaukee, Wisconsin. The single frame Grand Award winners will compete for the Single Frame Champion of Champions Award at the APS AmeriStamp Expo 2014 to be held in Little Rock, Arkansas in February 2014.

Our own Unit Secretary-Treasurer, Chris Dahle, served as an apprentice juror for the NTSS exhibits.

The ROPEX Grand winner was Gregory Shoults with his exhibit, *Washington and Franklin Rotary Press Coils 1914–1922 Perforated 10 Issues Production and Uses*.

The NTSS Grand winner was Norman F. Jacobs for his exhibit, *Tennis: From Game of Kings to King of Games*.

The show included five exhibits in the Youth Division and they were all top quality as each received a Gold Award, which is a highly encouraging sign for the future of philately. Alex Fillion (age 13) won the Youth Grand Award with her exhibit, *What a Princess Wants*. This is a terrific exhibit and one of my personal favorites.

This year also offered a veritable plethora of biology-related exhibits and they won a boatload of special awards.

The Olive: Olea europaea, by Vincent De Luca, a five-frame thematic exhibit showing the origin and evolution of the olive tree, its many uses and symbolism, and its essential relation to man received a Gold Award and also won the Reserve Grand Award, one of the top three special awards. This exhibit also won our own Biology Unit Award for the best exhibit on a biological topic.

Plague: The Story of the Most Infamous Bacterial Disease, by Dr. Edwin J. Andrews, a six-frame thematic exhibit detailing the cause and transmission of plague, its major pandemics, treatment, prevention and socioeconomic impact on humanity received a Gold Award. It also won the APS Research Medal for research excellence.

The Donkey in Man's World, by Robert J. Mather, a ten-frame thematic exhibit that acquaints the viewer with the donkey and highlights its place in the world and its relationship with man received a Gold Award.

The Lion: Most Symbolic Animal of All, by Greg Balagian, a six-frame thematic exhibit that chronicles the origins and development of lion symbolism in human culture received a Vermeil Award and also won an AAPE Award of Honor for exemplifying high standards of philatelic exhibition presentation.

How to Grow Tomatoes, by Dawn R. Hamman, a one-frame display exhibit presenting step-by-step guide to selecting, growing, and harvesting your own delicious tomatoes received a Vermeil Award in its first ever showing, and won the Mary Ann Owens One-Frame Grand Award, another of the top three prizes. This clever exhibit also won the Most Popular Exhibit award as well as the American Association of Philatelic Exhibitors Creativity Award given for inventiveness, humor, or unusual subject matter.

The Sirenians: Manatees and Dugongs, by Dawn R. Hamman, a one-frame display exhibit about these marine mammals and their struggle to survive received a Silver Award and also won the Women Exhibitors Sterling Achievement Award, which, by the way, does not have to go to a woman exhibitor as Chris Dahle won this award in the ROPEX competition for his exhibit on *The Universal Declaration of Human Rights*.

Food was the theme of several exhibits, including the Tomatoes exhibit already mentioned. And, as I have indicated previously in these pages, food certainly deserves a place in the field of biology.

Making of Whitetail Venison Sausage, by George DeKornfeld, a one frame thematic exhibit in recipe form received a Silver Award.

Dairy Products of the Cow, by Alex Fillion (age 13), a one-frame youth exhibit received a Gold Award.

The USDA "My Plate" Food Plate: Mapping Out the Foods, by Mia Fillion (age 12), a one-frame youth exhibit also received a Gold Award.

Stamp shows like NTSS offer visitors the chance to purchase supplies and search for new acquisitions for their collections from the many dealers that are present, as well as to see interesting and entertaining exhibits in a variety of categories. But the most appealing aspect of these shows to me is the opportunity to get together with friends I have made at previous shows and to meet and get to know other collectors, exhibitors, and dealers who share an interest in this most excellent hobby. I strongly urge all of you to take this opportunity at shows near you and to plan to attend the 65th Annual NTSS in St. Louis, Missouri, scheduled for 27–29 June 2014. I look forward to meeting you there.

See page 101 for a related article on the Distinguished Topical Philatelist award recipient.





FUNGI

Editor

Paul A. Mistretta, BU1681



New Listings

Scott#	Denom	Common Name/Scientific Name	Family	Code
COMORO ISLANDS				
2009 January 7 (Medical Pioneers; MS of 6 & SS)(see Note at list end)				
1037b	150fr	Robert Koch	----	A
1037d	300fr	Louis Pasteur	----	A
1037f	1000fr	Alexander Fleming	----	A
1038	3000fr	Louis Pasteur	----	B
2009 January 7 (Mycologists & Mushrooms; MS of 6 & SS)				
1055a	200fr	<i>Chroogomphus vinicolor</i> (& Charles Horton Peck)	Gomphidiaceae	B
1055b	250fr	<i>Macrolepiota procera</i> (& Michel Adanson)	Lepiotaceae	B
1055c	350fr	<i>Paxillus involutus</i> (& Miles Joseph Berkeley)	Paxillaceae	B
1055d	450fr	<i>Tricholoma flavovirens</i> (& Andrea Cesalpino)	Tricholomataceae	B
1055e	500fr	<i>Phallus impudicus</i> (& Eduard Fischer)	Phallaceae	B
1055f	1000fr	<i>Armillariella mellea</i> (& Charles Edwin Bessey)	Tricholomataceae	B
1056	3000fr	<i>Marasmius oreades</i> (& Pier Adolph Karsten)	Tricholomataceae	B
1056	3000fr	Milk Cap, <i>Lactarius lignyotus</i>	Russulaceae	Z
1056	3000fr	<i>Leccinum aurantiacum</i>	Boletaceae	Z
1056	3000fr	Ugly Milk-cap, <i>Lactarius necator</i>	Russulaceae	Z
1056	3000fr	Fire-milk Lactarius, <i>Lactarius pyrogalus</i>	Russulaceae	Z
2009 March 2 (Mushrooms; MS of 6 & SS)				
1069a	125fr	Caesar's Mushroom, <i>Amanita caesarea</i>	Amanitaceae	A
1069b	150fr	Panther Cap, <i>Amanita pantherina</i>	Amanitaceae	A
1069c	225fr	King Trumpet Mushroom, <i>Pleurotus eryngii</i>	Polyporaceae	A
1069d	300fr	Blusher, <i>Amanita rubescens</i>	Amanitaceae	A
1069e	400fr	Penny Bun, <i>Boletus edulis</i>	Boletaceae	A
1069f	1000fr	Lion Shield, <i>Pluteus leoninus</i>	Pluteaceae	A
1070	3000fr	Death Cap, <i>Amanita phalloides</i>	Amanitaceae	A
GHANA				
2012 December 12 (Mushrooms; two MS of 3ea)				
2173a	3ce	Jack-o'-Lantern Mushroom, <i>Omphalotus olearius</i>	Tricholomataceae	A
2173b	3ce	Fly Agaric, <i>Amanita muscaria</i>	Amanitaceae	A
2173c	3ce	Death Cap, <i>Amanita phalloides</i>	Amanitaceae	A
2174a	3ce	Oyster Mushroom, <i>Pleurotus ostreatus</i>	Polyporaceae	A
2174b	3ce	Almond Mushroom, <i>Agaricus subrufescens</i>	Agaricaceae	A
2174c	3ce	Saffron Milk Cap, <i>Lactarius deliciosus</i>	Russulaceae	A
ICELAND				
2012 November 1 (Boletes)				
1285 B50g(103k)		<i>Boletus edulis</i>	Boletaceae	A

MOZAMBIQUE**2010 November 10** (Mushrooms; MS of 4 & SS)

2108a	66m	Parasol Mushroom, <i>Macrolepiota procera</i>	Agaricaceae	B
2108b	66m	Lurid Bolete, <i>Boletus luridus</i>	Boletaceae	B
2108c	66m	White Knight, <i>Agaricus albus</i> [<i>Ed. note: A. album</i>]	Agaricaceae	B
2108d	66m	<i>Agaricus nitidus</i>	Agaricaceae	B
2119	66m	<i>Cortinarius torvus</i>	Cortinariaceae	B

2011 June 30 (Alexander Fleming & Penicillin; MS of 4 & SS)

2287a	16m	Molecular model of penicillin	----	B
2287b	16m	<i>Penicillium</i> sp.	Trichocomaceae	B
2287c	16m	Vial and needle of penicillin	----	B
2287d	16m	Petri dish with <i>Penicillium</i> sp.	Trichocomaceae	B
2299	175m	Fleming, <i>Penicillium</i> sp., tablets, Red Cross workers/soldiers	Trichocomaceae	B

2011 December 30 (Fungi & Mycologists; MS of 6 & SS)

2468a	66m	<i>Crinipellis scaber</i> (& Elias Magnus Fries)[<i>Ed. note: scabellus?</i>]	Marasmiaceae	B
2468b	66m	<i>Psilocybe semilanceata</i> (& Heinrich Anton De Barry)	Strophariaceae	B
2468c	66m	<i>Crinipellis zonata</i> (& Charles Horton Peck)	Marasmiaceae	B
2468d	66m	<i>Inocybe patouillardii</i> (& Narcisse Théophile Patouillard)	Cortinariaceae	B
2468e	66m	<i>Stephanospora caroticolor</i> (& Miles Joseph Berkeley)	Stephanosporaceae	B
2468f	66m	<i>Sarcodon fuligineoviolaceus</i> (& Károly Kalchbrenner)	Hydnaceae	B
2496	175m	<i>Clavariadelphus truncatus</i> (& Lucien Quélet)	Clavariaceae	B

2012 October 30 (Fungi & Mycologists; MS of 6 & SS)

2729a	16m	<i>Hygrophorus lucorum</i> (& Gordon H. Cunningham)	Hygrophoraceae	B
2729b	16m	<i>Lycoperdon perlatum</i> (& Gordon H. Cunningham)	Lycoperdaceae	B
2729c	16m	<i>Leccinum scabrum</i> (& Gordon H. Cunningham)	Boletaceae	B
2729d	16m	<i>Bolbitius psittacinus</i> (& Gordon H. Cunningham)	Bolbitiaceae	B
2729e	16m	<i>Calocera viscosa</i> (& Gordon H. Cunningham)	Dacrymycetaceae	B
2729f	16m	<i>Armillaria gallica</i> (& Gordon H. Cunningham)	Physalacriaceae	B
2759	175m	<i>Plectania melastoma</i> (& Gordon H. Cunningham)	Sarcosomataceae	B

Related Issues**BRAZIL****2012 June 5** (Non-mushroom lookalike; MS of 4)

3171a	2.70r	2 different jellyfish (<i>Pelagia</i> sp. & <i>Phyllorhiza punctata</i>)	----	A
-------	-------	--	------	---

MOZAMBIQUE**2010 November 10** (Atomic mushroom cloud; MS of 4 & SS)

2107a	66m	Mushroom cloud from atomic explosion	----	B
2107b	66m	Mushroom cloud from atomic explosion	----	B
2119	175m	Mushroom cloud from atomic explosion	----	B

Awaiting Catalog Listing

Country	Issue Date	Description	Code
Burundi	12/12/2012	Poisonous mushrooms (MS of 4 & SS)	A
Ghana	12/12/2012	Mushrooms (two MS of 3ea)	A
Solomon Islands	02/15/2013	Mushrooms (MS of 4 & SS)	A

Note: I have listed three “Medical Pioneers” above (Comoro Islands), which may cause some consternation. Unlike the mycologists pictured on the other Comoro Islands issue and the issues of mycologists and fungi from Mozambique, the medical men’s relation to mycology is less obvious. I include them since each had a significant linkage to mycology, if not a major commitment to it.

Alexander Fleming was a Scottish biologist, pharmacologist, and botanist. He was the first to publish on the medicinal properties of a fungus. The fungus *Penicillium notatum* is the source of penicillin, which was the first antibiotic drug found by Fleming to be effective against a wide spectrum of previously untreatable diseases. (Fleming also appears on an issue from Mozambique detailed above).

Louis Pasteur, a French chemist and microbiologist, discovered the process we now call “pasteurization,” which is still used to sterilize liquids with a complex mix of fungal and bacterial contaminants.

Robert Koch, a German scientist and physician, had the least obvious linkage to mycology. His development of what have become known as “Koch’s postulates” has for many years been the basis of determining causality of infectious diseases that affect both plants and animals; with fungi being among the causes to which these diagnostic postulates are applied.

As for a lot of the recent listings in this quarterly report, make your own call as to whether these items belong in your collection, or not.

JOURNAL INDEX UPDATE

As I mentioned in the last edition, I am currently creating an index for Volumes 1 through 61 of the Biology Unit journal for publication later this year. This publication will also include a section on the “History of the Biology Unit.” Our Unit library of past issues has some serious deficiencies due to several unfortunate circumstances, which I will not detail here. Mark Reineke, our current Librarian, and I have been working to correct this.

We have received some valuable assistance from John Bloor and Sergio Lugo at the Rocky Mountain Philatelic Library in Denver and from Barbara Kittle and her staff at the Daniel A. Reed Library of the State University of New York at Fredonia. These libraries have provided copies of their holdings for us and we have begun a project of scanning each edition into digital format in order to make them available for reference.



Presentation to Ms. Barbara Kittle

While I was back in New York for the NTSS this past week, I took the opportunity to drive to Fredonia to visit Ms. Kittle and present a certificate of appreciation to her and the Reed Library on behalf of the Biology Unit. You may wonder why this library would have holdings of our journal and it is because Dr. Willard F. Stanley, who was the first Secretary-Treasurer of the Unit and also the second editor of the journal, served as the head of the Biology Department there for 35 years.

Ms. Kittle also very graciously provided a tour of the Willard F. Stanley Biology Museum located in Jewett Hall. This museum contains some of the specimens collected by Dr. Stanley and others at Fredonia representing many phyla. There were many ornithological specimens including not only stuffed birds, but also eggs and nests. I was particularly interested in the several drawers of insect specimens.

Despite the success in acquiring two dozen editions to replace missing, partial, or damaged copies, we are still in need of some other replacements. I hope there are some members who can help in this area by loaning copies of editions that we need. I have listed these volumes and editions below. If you have one (or more) of these, and can let me borrow it, please contact me by e-mail (jackcongrove@comcast.net) or letter at the addresses on the inside cover.

- Vol. 2, No. 1 (May 1952): pages 1, 3, and 4 damaged
- Vol. 2, No. 2 (June 1952): page 1 damaged
- Vol. 2, No. 9 (January 1953): page 3 to end missing
- Vol. 3, No. 2 (June 1953): page 1 missing
- Vol. 3, No. 4 (August 1953): page 4 missing
- Vol. 4, No. 7 (January 195): pages after page 8?

THE BALTIMORE ORIOLE

Maryland's Beloved Songster and State Bird

Sarah M. Andrews, BU1834



State Bird

The Baltimore Oriole (*Icterus galbula*), with its distinctive black and bright orange coloring and melodious voice, is a familiar songbird across much of eastern North America. The species is especially well-known and loved in Maryland, where it has been the official state bird since 1947, and was first adopted as the name of a Baltimore baseball team in the 1880s.

These birds are seen most often among the high branches of deciduous trees in open woodlands and forest edges as well as urban parks and suburban areas. The male is easily identified by its orange under parts and rump, black head and upper back, black and white wings, and black tail tipped with orange.

The female is less brightly colored, with a mottled orange-gray head, orange under parts, and gray wings with white wing bars. Baltimore Orioles eat caterpillars, insects, spiders, and fruits and can be attracted to backyard feeding stations with halved oranges or oriole feeders stocked with sugar water. During breeding season, the female may spend about a week, sometimes two, weaving a pendant nest in which she will lay between three and seven eggs.



Female

The birds are Neotropical migrants, wintering in the West Indies and from southern Mexico through Central America into the northwest portions of South America. The Baltimore Oriole is one of many species that have suffered declines from pesticide use and loss of wintering habitat, particularly as shade trees have been cleared for coffee plantations.

The common name "Baltimore Oriole" can be traced to the colonial era, when Europeans associated the bird's coloring with the colors of the Calvert family (the Lords Baltimore), the 17th-century proprietors of the Maryland colony. The "Baltimore-Bird" was one of many "Birds and beasts of Curiosity" ordered shipped to England in 1698 to grace the royal gardens (Archives of Maryland 23: 455-56). In 1731, naturalist Mark Catesby illustrated the "Baltimore Bird" in *The Natural History of Carolina, Florida and the Bahama Islands*, and in 1758, Linnaeus named the species *Coracias galbula* (the small yellowish jackdaw).



Audubon Illustration

The birds were commonly called orioles because of their resemblance to the Old World Orioles, to which they are not closely related. When John James Audubon depicted the species and its pendant nest in *The Birds of America*, published between 1827 and 1838, he called it the Baltimore Oriole.

Baltimore Orioles are known to hybridize with Bullock's Orioles (*Icterus bullocki*) where their ranges overlap in the Great Plains, and the two species were lumped into one, the Northern Oriole, in 1983. But, happily for Marylanders and Baltimore baseball fans, Northern Oriole was split once again to Baltimore and Bullock's orioles in 1995. Also happily, the bird is seen regularly across Maryland during the spring and summer months.



Bullock's Oriole

Source:

Rising, James D. and Nancy J. Flood. 1998. *Baltimore Oriole (Icterus galbula)*, *The Birds of North America Online* (A. Poole, Ed.). Ithaca: Cornell Lab of Ornithology; Retrieved from the Birds of North America Online: <http://bna.birds.cornell.edu.bnaproxy.birds.cornell.edu/bna/species/384>.

[Ed. note: Ms. Andrews is a relatively recent member of the Biology Unit. She quickly responded to my appeal for an article with the above result. Perhaps I can use this example to convince you longer-term members to provide an article of your own. Get busy.]



MAMMALIA

Editor

Michael Prince, LM68



Scott#	Denom	Common Name/Scientific Name	Family/Subfamily
AUSTRALIA 2012 September 28 (Animals in Australian Zoos)			
3777	60c	Tiger, <i>Panthera tigris</i>	Felidae
3779, 3787	60c	Sumatran Orangutan, <i>Pongo abelii</i>	Hominidae
3780, 3786	60c	Giant Panda, <i>Ailuropoda melanoleuca</i>	Ursidae
3781, 3785	60c	Giraffe, <i>Giraffa camelopardalis</i>	Giraffidae
3783, 3784	60c	Black Rhinoceros, <i>Diceros bicornis</i>	Rhinocerotidae
AUSTRIA 2012 September 14 (Fox)			
2395	90c	Red Fox, <i>Vulpes vulpes</i>	Canidae
2012 September 22 (Innsbruck Alpenzoo 50th Anniv)			
2397	70c	Alpine Ibex, <i>Capra ibex</i>	Bovidae
BANGLADESH 2012 June 14 (Endangered Animals)			
799b	25t	Hanuman Langur, <i>Semnopithecus entellus</i>	Cercopithecidae
BELARUS 2012 June 20 (Hedgehogs)			
827	(3300r)	Long-eared Hedgehog, <i>Hemiechinus auritus</i>	Erinaceidae
828	(5100r)	Eastern European Hedgehog, <i>Erinaceus concolor</i>	Erinaceidae
BOSNIA (Serbian Admin) 2012 April 20 (Animals)			
418	10p	European Rabbit, <i>Oryctolagus cuniculus</i>	Leporidae
419	20p	Least Weasel, <i>Mustela nivalis</i>	Mustelidae
420	50p	European Otter, <i>Lutra lutra</i>	Mustelidae
421	90p	Eurasian Lynx, <i>Lynx lynx</i>	Felidae
2012 June 12 (Animals)			
454	50p	European Otter, <i>Lutra lutra</i>	Mustelidae
455	90p	Eurasian Lynx, <i>Lynx lynx</i>	Felidae
BURUNDI 2011 December 1 (Animals)			
822	1020fr	Hippopotamus, <i>Hippopotamus amphibius</i>	Hippopotamidae
823	1090fr	Hippopotamus, <i>Hippopotamus amphibius</i>	Hippopotamidae
824	3000fr	Hippopotamus, <i>Hippopotamus amphibius</i>	Hippopotamidae
825	3000fr	Hippopotamus, <i>Hippopotamus amphibius</i>	Hippopotamidae
826a-b	1090fr	Hippopotamus, <i>Hippopotamus amphibius</i>	Hippopotamidae
826c-d	3000fr	Hippopotamus, <i>Hippopotamus amphibius</i>	Hippopotamidae
827	1020fr	Chimpanzee, <i>Pan troglodytes</i>	Hominidae
828	1090fr	Olive Baboon, <i>Papio anubis</i>	Cercopithecidae
829	3000fr	Angola Colobus, <i>Colobus angolensis</i>	Cercopithecidae
830	3000fr	Vervet Monkey, <i>Chlorocebus pygerythrus</i>	Cercopithecidae

BURUNDI (continued)

831a	1090fr	Vervet Monkey, <i>Chlorocebus pygerythrus</i>	Cercopithecidae	
831b	1090fr	Chimpanzee, <i>Pan troglodytes</i>	Hominidae	
831c	3000fr	Olive Baboon, <i>Papio anubis</i>	Cercopithecidae	
831d	3000fr	Angola Colobus, <i>Colobus angolensis</i>	Cercopithecidae	
832	1090fr	Black Rhinoceros, <i>Diceros bicornis</i>	Rhinocerotidae	
833	1090fr	White Rhinoceros, <i>Ceratotherium simum</i>	Rhinocerotidae	
834	3000fr	Black Rhinoceros, <i>Diceros bicornis</i>	Rhinocerotidae	
835	3000fr	White Rhinoceros, <i>Ceratotherium simum</i>	Rhinocerotidae	
836a	1020fr	White Rhinoceros, <i>Ceratotherium simum</i>	Rhinocerotidae	
836b	1120fr	Black Rhinoceros, <i>Diceros bicornis</i>	Rhinocerotidae	
836c	3000fr	White Rhinoceros, <i>Ceratotherium simum</i>	Rhinocerotidae	
836d	3000fr	Black Rhinoceros, <i>Diceros bicornis</i>	Rhinocerotidae	
837	1020fr	Franquet's Epauletted Bat, <i>Epomops franqueti</i>	Pteropodidae	new
838	1020fr	Common Noctule, <i>Nyctalus noctula</i>	Vespertilionidae	
839	3000fr	Vampire Bat, <i>Desmodus rotundus</i>	Phyllostomidae	
840	3000fr	Grey Big-eared Bat, <i>Plecotus austriacus</i>	Vespertilionidae	new
841a	1000fr	Common Noctule, <i>Nyctalus noctula</i>	Vespertilionidae	
841b	1120fr	Lesser Horseshoe Bat, <i>Rhinolophus hipposideros</i>	Vespertilionidae	
841c	3000fr	Grey Big-eared Bat, <i>Plecotus austriacus</i>	Vespertilionidae	new
841d	3000fr	Eastern Long-eared Bat, <i>Nyctophilus corbeni</i>	Vespertilionidae	new
842	1000fr	Cheetah, <i>Acinonyx jubatus</i>	Felidae	
843	1090fr	Serval, <i>Leptailurus serval</i>	Felidae	
844	3000fr	Leopard, <i>Panthera pardus</i>	Felidae	
845	3000fr	Lion, <i>Panthera leo</i>	Felidae	
846a	1020fr	Cheetah, <i>Acinonyx jubatus</i>	Felidae	
846b	1090fr	Lion, <i>Panthera leo</i>	Felidae	
846c	3000fr	Wild Cat, <i>Felis silvestris</i>	Felidae	
846d	3000fr	Leopard, <i>Panthera pardus</i>	Felidae	
847	1000fr	African Bush Elephant, <i>Loxodonta africana</i>	Elephantidae	
848	1120fr	African Bush Elephant, <i>Loxodonta africana</i>	Elephantidae	
849	3000fr	African Bush Elephant, <i>Loxodonta africana</i>	Elephantidae	
850	3000fr	African Bush Elephant, <i>Loxodonta africana</i>	Elephantidae	
851a-b	1000fr	African Bush Elephant, <i>Loxodonta africana</i>	Elephantidae	
851c-d	3000fr	African Bush Elephant, <i>Loxodonta africana</i>	Elephantidae	
852	1020fr	White-beaked Dolphin, <i>Lagenorhynchus albirostris</i>	Delphinidae	
853	1090fr	Risso's Dolphin, <i>Grampus griseus</i>	Delphinidae	
854	3000fr	Short-beaked Common Dolphin, <i>Delphinus delphis</i>	Delphinidae	
855	3000fr	Hourglass Dolphin, <i>Lagenorhynchus cruciger</i>	Delphinidae	
856a	1000fr	Common Bottlenose Dolphin, <i>Tursiops truncatus</i>	Delphinidae	
856b	1020fr	Pantropical Spotted Dolphin, <i>Stenella attenuata</i>	Delphinidae	
856c	3000fr	Spinner Dolphin, <i>Stenella longirostris</i>	Delphinidae	
856d	3000fr	Atlantic Spotted Dolphin, <i>Stenella frontalis</i>	Delphinidae	
857	1020fr	Blue Whale, <i>Balaenoptera musculus</i>	Balaenopteridae	
858	1020fr	Fin Whale, <i>Balaenoptera physalus</i>	Balaenopteridae	
859	3000fr	Killer Whale, <i>Orcinus orca</i>	Delphinidae	
860	3000fr	Grey Whale, <i>Eschrichtius robustus</i>	Balaenopteridae	
861a	1000fr	Grey Whale, <i>Eschrichtius robustus</i>	Balaenopteridae	
861b	1000fr	Blue Whale, <i>Balaenoptera musculus</i>	Balaenopteridae	
861c	3000fr	Humpback Whale, <i>Megaptera novaeangliae</i>	Balaenopteridae	
861d	3000fr	Beluga, <i>Delphinapterus leucas</i>	Delphinidae	

CUBA		2011 October 18 (Animals)		
5242	5c	Polar Bear, <i>Ursus maritimus</i>		Ursidae
5243	10c	Red Deer (Elk), <i>Cervus elaphus</i>		Cervidae
5244	15c	Llama, <i>Lama glama</i>		Camelidae
5245	50c	Grey Wolf, <i>Canis lupus</i>		Canidae
5246	65c	Bornean Orangutan, <i>Pongo pygmaeus</i>		Hominidae
5247	85c	Koala, <i>Phascolarctos cinereus</i>		Phascolarctidae
5248	1p	Lion, <i>Panthera leo</i>		Felidae
ECUADOR		2011 June 11 (Flora and Fauna)		
2061a	25c	Nine-banded Armadillo, <i>Dasypus novemcinctus</i>		Dasypodidae
2061b	25c	Common Squirrel Monkey, <i>Saimiri sciureus</i>		Cebidae
		2012 June 11 (Galapagos Islands Landscape and Fauna)		
2064a	25c	Galapagos Sea Lion, <i>Zalophus wollebaeki</i>		Otariidae
FALKLAND ISLANDS		2012 November 9 (Dolphins and Whales)		
1067	1p	Southern Right Whale Dolphin, <i>Lissodelphis peronii</i>		Delphinidae
1068	2p	Minke Whale, <i>Balaenoptera acutorostrata</i>		Balaenopteridae
1069	5p	Peale's Dolphin, <i>Lagenorhynchus australis</i>		Delphinidae
1070	10p	Dusky Dolphin, <i>Lagenorhynchus obscurus</i>		Delphinidae
1071	30p	Southern Right Whale, <i>Eubalaena australis</i>		Balaenidae
1072	50p	Fin Whale, <i>Balaenoptera physalus</i>		Balaenopteridae
1073	75p	Hourglass Dolphin, <i>Lagenorhynchus cruciger</i>		Delphinidae
1074	£1	Long-finned Pilot Whale, <i>Globicephala melas</i>		Delphinidae
1075	£1.20	Killer Whale, <i>Orcinus orca</i>		Delphinidae
1076	£2	Sperm Whale, <i>Physeter catodon</i>		Physeteridae
1077	£3.50	Commerson's Dolphin, <i>Cephalorhynchus commersonii</i>		Delphinidae
1078	£5	Sei Whale, <i>Balaenoptera borealis</i>		Balaenopteridae
GIBRALTAR		2012 November 2 (Endangered Animals)		
1353	42p	Arabian Oryx, <i>Oryx leucoryx</i>		Bovidae
1354	42p	Indian Rhinoceros, <i>Diceros unicornis</i>		Rhinocerotidae
1355	42p	Grey Wolf, <i>Canis lupus</i>		Canidae
1356	42p	Iberian Lynx, <i>Lynx pardinus</i>		Felidae
1357	42p	Snow Leopard, <i>Uncia uncia</i>		Felidae
1358	42p	Western Gorilla, <i>Gorilla gorilla</i>		Hominidae
ICELAND		2012 September 13 (Seals)		
1280	(475k)	Hooded Seal, <i>Cystophora cristata</i>		Phocidae
1281	(480k)	Walrus, <i>Odobenus rosmarus</i>		Phocidae
INDONESIA		2012 June 5 (Environmental Care)		
2309	2000r	White Rhinoceros, <i>Ceratotherium simum</i>		Rhinocerotidae
2310	5000r	White Rhinoceros, <i>Ceratotherium simum</i>		Rhinocerotidae
JAPAN		2012 June 20 (Ogaswara Islands UNESCO World Heritage Site)		
3442i	80¥	Common Bottlenose Dolphin, <i>Tursiops truncatus</i>		Delphinidae
	Margin	Humpback Whale, <i>Megaptera novaeangliae</i>		Balaenopteridae
		2012 August 23 (Fauna and Flora)		
3463	80¥	Eurasian Least Shrew, <i>Sorex minutissimus</i>		Soricidae

new

KOREA (South)		2012 January 26 (Diplomatic Relations with Mexico 50th Anniv)	
2377a–b	270w	Grey Whale, <i>Eschrichtius robustus</i>	Balaenopteridae
LAOS		2012 July 13 (Wildlife Conservation)	
1850	1000k	Asian Elephant, <i>Elephas maximus</i>	Elephantidae
1851	3000k	Tiger, <i>Panthera tigris</i>	Felidae
1852	5000k	Saola (Vu Quang Ox), <i>Pseudoryx nghetinhensis</i>	Bovidae new
1853	8000k	Red-shanked Douc Langur, <i>Pygathrix nemaeus</i>	Cercopithecidae
LIBERIA		2012 May 3 (African Wildlife)	
2807a	\$75	Giraffe, <i>Giraffa camelopardalis</i>	Giraffidae
2807b	\$75	Dorcas Gazelle, <i>Gazella dorcas</i>	Bovidae
2807c	\$75	Blue Duiker, <i>Philantomba monticola</i>	Bovidae
2807d	\$75	Red River Hog, <i>Potamochoerus porcus</i>	Suidae
2807e	\$75	Hartebeest, <i>Alcelaphus buselaphus</i>	Bovidae
2808a	\$100	Spotted Hyena, <i>Crocuta crocuta</i>	Hyaenidae
2808b	\$100	Side-striped Jackal, <i>Canis adustus</i>	Canidae
2808c	\$100	Serval, <i>Leptailurus serval</i>	Felidae
2809	\$250	African Bush Elephant, <i>Loxodonta africana</i>	Elephantidae
2810	\$250	Patas Monkey, <i>Erythrocebus patas</i>	Cercopithecidae
MEXICO		2012 January 26 (Diplomatic Relations with South Korea 50th Anniv)	
2771	13.50p	Grey Whale, <i>Eschrichtius robustus</i> (adult)	Balaenopteridae
2772	13.50p	Grey Whale, <i>Eschrichtius robustus</i> (juvenile)	Balaenopteridae
NAMIBIA		2012 April 9 (Bats)	
1236	(\$5.30)	Straw-colored Fruit Bat, <i>Eidolon helvum</i>	Pteropodidae
1237	(\$5.30)	Egyptian Slit-faced Bat, <i>Nycteris thebaica</i>	Nycteridae
1238	(\$5.30)	Angolan Epauletted Fruit Bat, <i>Epomophorus angolensis</i>	Pteropodidae new
SINGAPORE		2012 September 6 (Giant Pandas)	
1567	50c	Giant Panda, <i>Ailuropoda melanoleuca</i>	Ursidae
1568	65c	Giant Panda, <i>Ailuropoda melanoleuca</i>	Ursidae
1569	\$2	Giant Panda, <i>Ailuropoda melanoleuca</i>	Ursidae
1570	\$10	Giant Panda, <i>Ailuropoda melanoleuca</i>	Ursidae
1571	50c	Giant Panda, <i>Ailuropoda melanoleuca</i>	Ursidae
SOUTH AFRICA		2012 July 12 (Big Game Animals)	
C108	(5.40r)	African Buffalo, <i>Syncerus caffer</i>	Bovidae
C109	(5.40r)	African Bush Elephant, <i>Loxodonta africana</i>	Elephantidae
C110	(5.40r)	Leopard, <i>Panthera pardus</i>	Felidae
C111	(5.40r)	Black Rhinoceros, <i>Diceros bicornis</i>	Rhinocerotidae
C112	(5.40r)	Lion, <i>Panthera leo</i>	Felidae
SOUTH GEORGIA & SOUTH SANDWICH IS. 2012 November 9 (Marine Protected Area)			
460	65p	Southern Elephant Seal, <i>Mirounga leonina</i>	Phocidae
VIETNAM		2012 April 1 (Bears)	
3440	2000d	Asiatic Black Bear, <i>Ursus thibetanus</i>	Ursidae
3441	4500d	Sun Bear, <i>Helarctos malayanus</i>	Ursidae
3442	8500d	Sun Bear, <i>Helarctos malayanus</i>	Ursidae
3443	10500d	Asiatic Black Bear, <i>Ursus thibetanus</i>	Ursidae
3444	14500d	Asiatic Black Bear, <i>Ursus thibetanus</i>	Ursidae

SERPENT IN THE BOTTLE

[*Ed. note: This stamp was first mentioned in Volume 7, Number 1 of these pages by Dr. Willard Stanley. I include his comments below. It is apparent that times have changed in that most of the recent stamp issues that depict snakes show them in their natural habitat and colors.*]

Of the stamps showing snakes, very few are devoted to showing snakes as zoological exhibits. All too frequently they are stylized as a symbol of something—usually something unpleasant.

A striking example of snake symbolism is a recent issue by Turkey showing a coiled and striking snake in a bottle with two hands forcing a stopper into the neck of the bottle to confine the snake. The stamp was issued to mark the recent meeting of the 25th International Congress Against Alcoholism, which was held at the University of Istanbul.

This is an interesting example of a *tête-bêche* pair. This is a French term that means “head-to-tail” (literally “head-to-head”). It defines two stamps printed in reverse to one another. They may be printed as reverse head-to-head, reverse side-by-side, or reverse foot-to-foot. You may use *tête-bêche* stamps as pairs in payment of postage rates or as single stamps.

Turkey issued this stamp (Sc#1213a) on 10 September 1956 to promote the Congress meeting held 10–15 September. It was printed by offset both in regular sheets and in sheets with alternate vertical rows inverted and perforated 10½.



Tête-bêche Pair

Dr. Stanley also included a comment from a Mr. Everett, “An interesting aspect is that, although Turkey is a Moslem country, the inscription for this design came from the Christian Bible. It is based on Proverbs 25:32. ‘At last it bites like a serpent and stings like an adder.’” Clearly there is no such inscription on the stamp itself, so I wondered if it appeared on the margins of the sheet, or in some commemorative cachet or panel. However, my investigations have not revealed any such inscription on covers or other related material. If any reader can provide more information about this matter, please contact the editor.

JEAN C. STOUT 2013 DISTINGUISHED TOPICAL PHILATELIST

[*Editor’s Note: The following is excerpted from and ATA press release.*]

Topical collector Jean C. Stout of Jackson, Mississippi, has been selected as the American Topical Association 2013 Distinguished Topical Philatelist, according to an announcement by DTP committee chairman Donald W. Smith. The award will be presented 18 May 2013, during the ATA National Topical Stamp Show in Rochester, New York.

Jean Stout joined ATA in 2004, and began serving as a member of the ATA Board of Directors in 2012. She is co-founder and vice president of the ATA Penguins on Stamps Study Unit, organized in June 2007. Serving as Unit Treasurer, Jean regularly teamed up with Unit Secretary Sue Rosenberg to prepare and present CD programs at the 2010 and 2011 unit meetings. During the 2012 unit meeting Jean introduced a contest for members to prepare one-page penguin exhibits to be used in a noncompetitive single-frame exhibit publicizing the Penguins on Stamps unit.

Jean also participates in the ATA Ambassador program, maintains the Penguins on Stamps Study Unit checklist, and has prepared Penguin displays at three different local libraries. She is a member of the American Philatelic Society and the American Society of Polar Philatelists. Her other topical interests include Roosters/Chickens, Sherlock Holmes, and Halloween/Horror.



Jean C. Stout

In early 1996, Jean asked her husband, R. Lamar Stout, a prominent philatelic Rhodesia collector, if there was anything she could do to help. He handed her a shoe box of stamps to soak off covers. He then bought her a U.S. Minute Man album, and she was hooked. But what to collect? The Stouts owned a wholesale company selling refrigeration and heating equipment. The company logo was a Penguin named "Polly." Jean decided to collect penguin stamps initially to illustrate a children's book for her granddaughters.

Jean Stout was born in Port Arthur, Texas. She received a Bachelor Degree in Business Administration from McNeese State University in Lake Charles, Louisiana. She has been married for 52 years and has a son, a daughter, and four granddaughters. Jean has been involved with the United Methodist Women, most recently serving as president of her local unit. Other interests include visiting aquariums and zoos, organizing patio flower gardens, and identifying birds.

The ATA Distinguished Topical Philatelist Award was established in 1952 by ATA founder Jerome Husak to recognize notable service in topical philately. This award has been presented in the past 64 years to 120 topical philatelists, including residents of Canada, Great Britain, and Italy. The current selection committee, chaired by Donald W. Smith, consists of Donald Beuthel, Jack H. Green, George Griffenhagen, Dorothy C. Smith, Dalene Thomas, and Mark H. Winnegrad.

STAMPS LACK ANIMAL DIVERSITY

[*Editor's Note: This article is reprinted from the 25 March 2013 edition of Linn's Stamp News.*]

Brazilian biologists Andre Nemesio and two colleagues have analyzed the animals pictured on stamps, according to a guest blog by Laura Jane Martin on the website of the *Scientific American*.

The blog was posted Feb. 20.

Martin reported that after examining stamps offered on the Delcampe and eBay auction sites, Nemesio discovered that 60 percent of them show birds or mammals, although the vast majority of the world's 8.7 million known species are neither of those.

Nemesio said, "If someone studied the diversity of life through stamps, he or she would reach the conclusion that birds and mammals are the dominant species on earth, that elephants are perhaps the most abundant creatures on this planet, and that insects are a small fraction of nature, mainly represented by butterflies."

He stressed the role that stamps could play in educating people about the diversity of animal life, especially the "hundreds of thousands" of beneficial insects. Nemesio added that images, not numbers, will attract attention.

My comment on this study is that it was far from a scientific investigation of the issue. Searches of on-line auction sites would typically yield filtered results since sellers tend to offer primarily items that have a greater chance of selling than those that do not. One only needs to look at the collecting interests of our own Unit members to see that a large percentage concentrate on birds and mammals. Marketing experts and retail sellers are not fools. They design and offer wares to appeal to the most dominant consumers.

One would expect that species selected for stamp designs would be attractive, cuddly, or notable for some other striking reason. For example, it should not be surprising that butterflies disproportionately represent the insect world as they are very colorful and eye-catching, not lackluster, ugly, or scary like many other insects. There are at least ten times as many moth species as butterfly species, but since most moths are dull and tiny, you will less often see them depicted on a stamp.



ORNITHOLOGY

Editor

Glenn G. Mertz, BU1455

Updates/Corrections



MOZAMBIQUE – Vol. 62(1), pp.25–26

Update: Scott Publishing Company has assigned numbers to several issues listed in Vol. 62(1):

2010 November 30

p.25 Hong Kong Ocean Park, Sc#2148e, g, & h

2011 January 30

- p.26 Year of Forests/Harpy Eagle, in list order Sc#2168a–f, SS 2198
 p.25 Year of Forests/Great Hornbill, in list order Sc#2181 a–f, SS 2211
 p.25 Year of Forests/Cassowary, in list order Sc#2182a–f, SS 2212
 p.25 Year of Forests/Owls in list order Sc#2183a–f, SS 2213
 p.25 Year of Forests/Lories in list order Sc#2184a–f, SS 2214
 p.25 Year of Forests/Resplendent Quetzal, in list order Sc#2185a–f
 p.26 Year of Forests/Toucans, in following order Sc#2186a, b, c, d, f, e, SS 2216

2011 January 30

- p.26 Fridtjof Nansen, Sc#2226c
 p.26 Antarctic Treaty, Sc#2259b & Sc#2259c

New Issues

Scott#	Denom	Common Name/Scientific Name	Family/Subfamily	Code
--------	-------	-----------------------------	------------------	------

ASCENSION 2012 December 5 A*

A pane of four se-tenant stamps (Sc#1066a–d) for the 70th Anniversary of Wideawake Field, but only two stamps featuring birds. Designer: Robin Carter. Offset by Cartor.

1066a	45p	Sooty Tern, <i>Onychoprion fuscatus</i>	Laridae	
1066d	£1.45	Masked Booby, <i>Sula dactylatra</i>	Sulidae	

AZERBAIJAN 2012 November 5 A*

A pane of six stamps (Sc#1004a–f) and a SS (Sc#1005). Two of the six stamps are common barnyard animals, as is the SS. Designer: K. Mirzoyev. Offset but no printer information.

1004b	20g	Wild Turkey, <i>Meleagris gallopavo</i>	Phasianidae	
1004d	40g	Helmeted Guineafowl, <i>Numida meleagris</i>	Phasianidae	
1004e	50g	Mallard, <i>Anas platyrhynchos</i>	Anatidae	
1004f	60g	Common Quail, <i>Coturnix coturnix</i>	Phasianidae	

BRAZIL 2011 July 6 A*

A SS with two stamps for Tijuca National Park. Designer: Paulo Baptista. Offset by State Mint.

3174a	5r	Green-headed Tanager, <i>Tangara seledon</i>	Thraupidae	
3174b	5r	Violet-capped Woodnymph, <i>Thalurania glaucopis</i>	Trochilidae	

2011 November 25**B***

No listing found in the “New Issues” section of *Linn’s Stamp News*. According to Scott Publishing Company, these two stamps were each printed in sheets of 12 stamps and 12 labels that sold for 30r and the labels could be personalized.

- | | | | |
|------|-------|--|----------|
| 3203 | (30r) | Azure Jay, <i>Cyanocorax caeruleus</i> (dawn setting design) | Corvidae |
| 3204 | (30r) | Same bird, but the bird is with a tree in the background | |

BURKINA FASO**2011 October 12****A***

A set of three stamps for poultry (Sc#1336–38), but only two of the birds can be found in the wild. No information regarding the printing method, but the name of Cartor on the stamps is the printer. Designer is K. Timpous.

- | | | | |
|------|-------|---|-------------|
| 1337 | 160fr | Wild Turkey, <i>Meleagris gallopavo</i> | Phasianidae |
| 1338 | 265fr | Red Junglefowl, <i>Gallus gallus</i> | Phasianidae |

BURUNDI**2012 August 31****A***

A set of five MS from a set of 20, with a set of four SS from a set of 20. None of these sheets, which show birds, have been listed in the *Linn’s Stamp News* “New Issues” section.

Endangered Birds

- | | | | |
|-------|-----------|---|--------------|
| 1123a | 1070fr | Hyacinth Macaw, <i>Anodorhynchus hyacinthinus</i> | Psittacidae |
| | | Military Macaw, <i>Ara militaris</i> | Psittacidae |
| 1123b | 1070fr | Green Bee-eater, <i>Merops orientalis</i> | Meropidae |
| 1123c | 3000fr | Tawny Eagle, <i>Aquila rapax</i> | Accipitridae |
| 1123d | 3000fr | Great Gray Owl, <i>Strix nebulosa</i> | Strigidae |
| 1143 | SS 7500fr | Spotted Owl, <i>Strix occidentalis</i> | Strigidae |

Birds and Pollution

- | | | | |
|-------|-----------|---|--------------|
| 1122a | 1070fr | Common Cuckoo, <i>Cuculus canorus</i> | Cuculidae |
| 1122b | 1070fr | Whooping Crane, <i>Grus americana</i> | Gruidae |
| 1122c | 3000fr | Great Curassow, <i>Crax rubra</i> | Cracidae |
| 1122d | 3000fr | Red Siskin, <i>Spinus cucullatus</i> | Fringillidae |
| 1142 | SS 7500fr | Yellow-crested Cockatoo, <i>Cacatua sulphurea citrinocristata</i> | Cacatuidae |

Species Extinct or Threatened (Only one stamp on this sheet (Sc#1116a–d) features a bird.)

- | | | | |
|-------|--------|---------------------------------------|----------|
| 1116a | 1070fr | Guam Rail, <i>Gallirallus owstoni</i> | Rallidae |
|-------|--------|---------------------------------------|----------|

Warming of the Climate (The SS for this issue does not have a bird species.)

- | | | | |
|-------|--------|---|--------------|
| 1114a | 1070fr | Snowy Owl, <i>Bubo scandiacus</i> | Strigidae |
| 1114b | 1070fr | Arctic Tern, <i>Sterna paradisaea</i> | Laridae |
| 1114c | 3000fr | Adelie Penguin, <i>Pygoscelis adeliae</i> | Spheniscidae |

Deforestation (The SS for this issue does not have a bird species.)

- | | | | |
|-------|--------|--|--------------|
| 1111b | 1070fr | Harpy Eagle, <i>Harpia harpyja</i> | Accipitridae |
| 1111d | 3000fr | Keel-billed Toucan, <i>Ramphastos sulfuratus</i> | Ramphastidae |

1980

In Vol. 60(4), I listed a stamp that Scott Publishing Company listed in the format of the stamps issued in 1979 (Sc#585D). In Vol. 59(1), I listed another (Sc#585F). The 18 stamps issued in 1979 were numbered Sc#548–56 (values 1fr, 2fr, 3fr, 5fr, 8fr, 10fr, 20fr, 27fr, and 50fr) and Sc#C273–81 (values 6fr, 13fr, 18fr, 26fr, 31fr, 36fr, 40fr, 54fr, and 70fr.). The stamps Sc#548–56 were written-up in Vol. 29(2), June 1980. The stamps Sc#C273–81 were written-up in Vol. 29(3), September 1980.

The stamps issued in 1980, in the same formats of the 1979 sets were never listed in *Biophilately*. Kjell Scharning's web site, www.birdtheme.com, listed two sets of these 1980 issues, one set with a brown frame/border and one set with a grey-green frame/border. He lists five birds in each of the sets. In checking *Stanley Gibbons Thematic Catalogue, Collect Birds on Stamps*, 5th Edition, revised by Dr. Malcolm Ogilvie and printed in 2003, it also lists the two sets as listed on Kjell's web site, five of them with copper frames/borders and the same five with grey-green frames/borders. Ogilvie's two listings carry a (t) after each of the two sets of five, which indicates an issue where other designs in the set depict other than birds. I am listing the two sets below, as both listed by Kjell's web site and as printed in the *Stanley Gibbons Thematic Catalogue*.

With Copper or Brown frame (also exist with grey-green frames/borders)

N/A	5fr	Abyssinian Ground Hornbill, <i>Bucorvus abyssinicus</i>	Bucorvidae	***
N/A	10fr	African Darter, <i>Anhinga rufa</i>	Anhingidae	
585D	40fr	Lesser Flamingo, <i>Phoenicopterus minor</i>	Phoenicopteridae	Vol.60(4)
N/A	45fr	Congo Peacock, <i>Afropavo congensis</i>	Phasianidae	
585F	50fr	Purple Swamphen, <i>Porphyrio porphyrio</i>	Rallidae	Vol.59(1)

It would appear, based on the new listing by Scott Publishing Company in the *Linn's Stamp News* of February 2013, that there might be more than five different values of these two 1980's sets bird type of 1979, as Scott indicates they are still looking for seven additional items that they have not seen.

585A	5fr	Abyssinian Ground Hornbill, <i>Bucorvus abyssinicus</i> (brown frame)	Bucorvidae	***
585C	30fr	Little Bee-eater, <i>Merops pusillus</i> (brown frame/border) (Not previously listed by Kjell or Stanley Gibbons)	Meropidae	
585L	50fr	Purple Swamphen, <i>Porphyrio porphyrio</i> (Scott lists this as having metallic blue frame)	Rallidae	

CARIBBEAN NETHERLANDS 2012 June 1

A*

A set of four stamps of parrots. Designer: Ariadne Faries. Offset by Enschede.

27	100c	Red-and-green Macaw, <i>Ara chloropterus</i>	Psittacidae
28	150c	Brown-throated Parakeet, <i>Aratinga pertinax</i>	Psittacidae
29	200c	Yellow-crowned Parrot, <i>Amazona ochrocephala</i> (Cap: <i>A. o. ochrocephala</i> , a subspecies)	Psittacidae
30	250c	Hyacinth Macaw, <i>Anodorhynchus hyacinthinus</i>	Psittacidae

CHRISTMAS ISLAND 2012 November 1

C*

Two stamps for Christmas Sand Sculpture with various items. Designer: Andrew Hopgood. Offset by RA Printing in sheets of 50, a SS containing the two stamps, and booklets of five and 20 in a SA format for the \$1.60 stamps.

506	55c	Christmas Island Frigatebird, <i>Fregata andrewsi</i>	Fregatidae
507	\$1.60	Same bird	
507a		SS of two (Sc#506-07)	

COMORO ISLANDS 2009 March 2 (Sheet of six se-tenant stamps of kingfishers)

A*

I have no "New Issues" articles from *Linn's Stamp News* on any of the listings I am writing for the Comoro Islands. The listings below were all reported in Vol. 59(4), but without Scott numbers.

1089a	200fr	Giant Kingfisher, <i>Megaceryle maximus</i>	Alcedinidae
1089b	250fr	Common Kingfisher, <i>Alcedo atthis</i>	Alcedinidae
1089c	350fr	Woodland Kingfisher, <i>Halcyon senegalensis</i>	Alcedinidae
1089d	450fr	African Pygmy-Kingfisher, <i>Ispidina picta</i>	Alcedinidae
1089e	500fr	Collared Kingfisher, <i>Todiramphus chloris</i>	Alcedinidae
1089f	1000fr	Malachite Kingfisher, <i>Corythornis cristatus</i>	Alcedinidae
1090	SS 3000fr	Blue-breasted Kingfisher, <i>Halcyon malimbica</i>	Alcedinidae

COMORO ISLANDS (continued) 2009 March 2**A***

A sheet of six se-tenant stamps of owls.

1087a	200fr	Pemba Scops-Owl, <i>Otus pembaensis</i>	Strigidae
1087b	250fr	Southern White-faced Owl, <i>Ptilopsis granti</i>	Strigidae
1087c	350fr	Barn Owl, <i>Tyto alba</i>	Tytonidae
1087d	450fr	Long-eared Owl, <i>Asio otus</i>	Strigidae
1087e	500fr	African Wood-Owl, <i>Strix woodfordii</i>	Strigidae
1087f	1000fr	Not identified, but the stamp has the scientific name <i>Tyto soumagnei</i> for Madagascar Red Owl	Tytonidae?
1088	SS 3000fr	Spotted Eagle-Owl, <i>Bubo africanus</i>	Strigidae

Two other issues reported in Vol. 59(4) were also assigned Scott numbers. The sheet of six of Ornithologists was assigned Sc#1041a–f and the SS, Sc#1042. The other sheet was of birds and lighthouses, assigned Sc#1033a–f, and the SS, Sc#1034.

CYPRUS 2011 May 4**C***

A two-stamp issue for the Europa Theme, International Year of Forest (Sc#1149–50). The two designs are se-tenant, with only one stamp featuring an owl in a tree. Designer: Stelios Karamallakis. Offset by Giesecke & Devrient Matsoukis. Booklet pane of eight (4ea Sc#1149a–50a) perforated 13×13½ on three sides.

1149	51c	Long-eared Owl, <i>Asio otus</i>	Strigidae
1149a		Same bird, booklet stamp	

DOMINICAN REPUBLIC 2012 September 19**A***

A sheet of ten se-tenant stamps and two labels of Endemic Birds. Designer: Alejandro Vignieri. Photographer: Miguel A. Landestoy. Offset by Editora De Luxe.

1529a	20p	Hispaniolan Nightjar, <i>Antrostomus cubanensis ekmani</i> (Now a subspecies of Greater Antillean Nightjar)	Caprimulgidae
1529b	20p	Hispaniolan Pewee, <i>Contopus hispaniolensis</i>	Tyrannidae Vol.62(1)
1529c	20p	Black-crowned Palm-Tanager, <i>Phaenicophilus palmarum</i>	Thraupidae
1529d	20p	Greater Antillean Oriole, <i>Icterus dominicensis</i>	Icteridae
1529e	20p	Hispaniolan Crossbill, <i>Loxia megaplaga</i>	Fringillidae Vol.62(1)
Label		Western Chat-Tanager, <i>Calyptophilus tertius</i>	Thraupidae Vol.62(1)
(Chuck Braun has inadvertently listed this as a postage stamp, which it is not, although the bird on the label is new to the Aviary.)			
Label		Ridgway's Hawk, <i>Buteo ridgwayi</i>	Accipitridae
1529f	20p	Eastern Chat-Tanager, <i>Calyptophilus frugivorus</i>	Thraupidae
1529g	20p	White-fronted Quail-Dove, <i>Geotrygon leucometopia</i>	Columbidae Vol.62(1)
1529h	20p	Hispaniolan Spindalis, <i>Spindalis dominicensis</i>	Thraupidae
1529i	20p	Palm Crow, <i>Corvus palmarum</i>	Corvidae Vol.62(1)
1529j	20p	Ashy-faced Owl, <i>Tyto glaucops</i>	Tytonidae

ECUADOR 2010 September 30**A***

Listed in the "New Issues" section of *Linn's Stamp News* of 13 September 2010 as Tourism/Diversity of Ecuador, Scott Publishing listed them as tourism type issue of 2009. The 16 stamps are of various sites of Provinces in Ecuador, and were released over a period of four different dates. The article in *Linn's* also listed them as self-adhesive stamps and in booklets, but Scott Publishing, in their listing made no reference to them being either SA or in booklets. Only one stamp of the 16 features a bird. The designer is listed as Rameix. Offset by Military Geography Institute.

1998	\$3	Harpy Eagle, <i>Harpia harpyja</i>	Accipitridae
------	-----	------------------------------------	--------------

FALKLAND ISLANDS**2012 December 14****A***

Two se-tenant pairs (Sc#1079a–b and Sc#1080a–b) for colors in nature, but only one stamp in each pair features a bird. Designers: Ian J. and Georgini Strange. Offset by Cartor.

1079a	30p	Black-crowned Night-Heron, <i>Nycticorax nycticorax</i>	Ardeidae
1080a	75p	Short-eared Owl, <i>Asio flammeus</i>	Strigidae

GHANA**2012 July 12****A***

Ghana issued two different panes of stamps and two SS on this date, but the “New Issues” section of *Linn’s Stamp News*, listed only one of the panes and one SS. Therefore, I have no information on designer, printing method, nor printer.

2702a	2c	Eurasian Hoopoe, <i>Upupa epops</i>	Upupidae	
2702b	2c	Long-tailed Glossy-Starling, <i>Lamprotornis caudatus</i>	Sturnidae	
2702c	2c	Northern Carmine Bee-eater, <i>Merops nubicus</i>	Meropidae	
2702d	2c	Miombo Sunbird, <i>Cinnyris manoensis</i>	Nectariniidae	
(bird on stamp incorrectly identified as a Southern Double-collared Sunbird, <i>Cinnyris chalybeus</i>)				
2703	SS 5c	Ostrich, <i>Struthio camelus</i>	Struthionidae	
2704a	2c	Cape Parrot, <i>Poicephalus robustus</i>	Psittacidae	
2704b	2c	Red-bellied Parrot, <i>Poicephalus rufiventris</i>	Psittacidae	New
2704c	2c	Meyer’s Parrot, <i>Poicephalus meyeri</i>	Psittacidae	
2704d	2c	Ruppell’s Parrot, <i>Poicephalus rueppellii</i>	Psittacidae	
2704e	2c	Gray Parrot, <i>Psittacus erithacus</i>	Psittacidae	
2704f	2c	Brown-headed Parrot, <i>Poicephalus cryptoxanthus</i>	Psittacidae	
2705	SS 5c	Senegal Parrot, <i>Poicephalus senegalus</i>	Psittacidae	

GREAT BRITAIN (Guernsey)**2011 July 28****A***

Six stamps (Sc#1130–35) issued for the Guernsey Literary and Potato Peel Pie Society, but only one stamp features a bird. Designer: Charlotte Barnes. Offset by BDT International.

1135	65p	Blue-and-yellow Macaw, <i>Ara ararauna</i>	Psittacidae
------	-----	--	-------------

GREAT BRITAIN (Jersey)**2012 August 14****A***

Another set of six birds of the type of 2007: Birdlife, Part 6, Threatened Birds. A SS is part of the issue and a SS of three of the birds, without white frames. Designer: Nick Parlett. Lithography by Cartor.

1609	45p	Lesser Spotted Woodpecker, <i>Dendrocopos minor</i>	Picidae
1610	55p	European Stonechat, <i>Saxicola rubicola</i>	Muscicapidae
1611	60p	Yellowhammer, <i>Emberiza citrinella</i>	Emberizidae
1612	68p	European Serin, <i>Serinus serinus</i>	Fringillidae
1615a	68p	Same bird, w/o white frames/borders	
1613	70p	Eurasian Bullfinch, <i>Pyrrhula pyrrhula</i>	Fringillidae
1615b	70p	Same bird, w/o white frames/borders	
1614	88p	Cirl Bunting, <i>Emberiza cirlus</i>	Emberizidae
1615c	88p	Same bird, w/o white frames/borders	
1614a		SS of six se-tenant stamps (Sc#1609–14)	

GUINEA**2011 August 30****A***

In Vol. 61(1), I listed a number of issues for this country with the date of 30 August 2011, for which Scott Publishing Company has not yet assigned numbers. Listed below are two more issues in the same style of birds located inside of pyramid formats, one with three pyramids, and the other with five pyramids.

N/A	5000fr	Yellow-billed Stork, <i>Mycteria ibis</i>	Ciconiidae
N/A	15000fr	Same bird	
N/A	25000fr	Same bird	

GUINEA (continued)

N/A	10000fr	Saddle-billed Stork, <i>Ephippiorhynchus senegalensis</i>	Ciconiidae
N/A	10000fr	Same bird	
N/A	10000fr	Marabou Stork, <i>Leptoptilos crumenifer</i>	Ciconiidae
N/A	10000fr	Yellow-billed Stork, <i>Mycteria ibis</i>	Ciconiidae
N/A	10000fr	Marabou Stork, <i>Leptoptilos crumenifer</i>	Ciconiidae

GUYANA**2010 April 26****A***

In 2010, Guyana overprinted Sc#3957 with “Haiti Earthquake Relief Fund” and the map of Haiti on the stamps and sheet margin. The sheet has four stamps in se-tenant format and is titled “Birds of South America.”

4025a	\$160	Golden-crowned Warbler, <i>Basileuterus culicivorus</i>	Parulidae
4025b	\$160	Blue-crowned Parakeet, <i>Aratinga acuticaudata</i>	Psittacidae
4025c	\$160	White-winged Parakeet, <i>Brotogeris versicolurus</i>	Psittacidae
4025d	\$160	Yellow-green Vireo, <i>Vireo flavoviridis</i>	Vireonidae

2012 October 23**A***

A pane of three se-tenant stamps (Sc#4137a–c) for Wildlife of South America. No designer information given. No printer information provided.

4137b	\$300	Channel-billed Toucan, <i>Ramphastos vitellinus</i>	Ramphastidae
-------	-------	---	--------------

INDIA**2011 December 19****C***

A single stamp for the 50th Anniversary of the Liberation of Goa. Seagulls in flight. No designer information. Offset, no printer information.

2556	5r	Pallas’s Gull, <i>Ichthyaetus ichthyaeus</i>	Laridae
------	----	--	---------

2012 October 16**A***

Endemic Species of Indian Biodiversity of Hot Spots. Four stamps (Sc#2594–97) with two stamps featuring birds and a SS (Sc#2597a) that contains the four stamps. No designer information. Offset by Hyderabad Security Press.

2594	5r	Nicobar Scrubfowl, <i>Megapodius nicobariensis</i>	Megapodiidae	Vol.62(1)
2597	25r	Bugun Liocichla, <i>Liocichla bugunorum</i>	Leiothrichidae	Vol.62(1)

IRELAND**2012 May 3****C***

A set if two stamps for Europa/Visit, but only one stamp features a bird in flight over Little Skellig Island. Designer: Steve Simpson. Offset by Irish Security Stamp Printing.

1963	55c	Herring Gull, <i>Larus argentatus</i>	Laridae
------	-----	---------------------------------------	---------

2012 September 13**A***

Stamps for Myths and Legends. Two 55c se-tenant stamps (Sc#1978–79) and two 82c se-tenant stamps (Sc#1980–81), but only one stamp features a bird.

1978	55c	Whooper Swan, <i>Cygnus cygnus</i>	Anatidae
------	-----	------------------------------------	----------

JAPAN**2012 November 15****C***

A sheet of five stamps (Sc#3492a–e) for the 60th Anniversary of the Oita Local Autonomy Law, with a single stamp in the upper half of the sheet and four stamps in a se-tenant format in the lower half of the sheet, but only one stamp features a bird. No designer listed on the “New Issues” article. Gravure, no printer information.

3492b	80¥	Japanese White-eye, <i>Zosterops japonicus</i>	Zosteropidae
-------	-----	--	--------------

JAPAN (continued) 2013 January 15 A*

A pane of five stamps (Sc#3506a–e) for the 60th Anniversary of Hyogo Local Autonomy Law. The stamp with the bird is at the top of the pane, and the other four are in a se-tenant format at the lower half of the pane. Designer: Maruyama Satoru. Gravure, but no printer information.

3506a 80¥ Oriental Stork, *Ciconia boyciana* Ciconiidae

JORDAN 2011 A*

A SS issued for Preserve the Polar Regions and Glaciers (Sc#2115a–b) has one stamp featuring penguins. No designer information. Offset, no printer information.

2115a 80p Gentoo Penguin, *Pygoscelis papua* Spheniscidae

KIRIBATI 2011 July A*

No “New Issues” article in *Linn’s Stamp News* regarding the issuing of these four stamps with surcharges on Sc#927–30. The stamps are overprinted with “1911–2011” on one line, and “100 Years of Stamps” on a second line, in addition to the new surcharge amounts.

984 25c on 5c Great Crested Tern, *Thalasseus bergii* (Sc#927 surch) Laridae
 985 30c on 10c Eurasian Teal, *Anas crecca* (Sc#928 surch) Anatidae
 (now a subspecies of *A. c. nimia*)
 986 50c on 20c Black-tailed Godwit, *Limosa limosa* (Sc#930 surch) Scolopacidae
 987 75c on 15c Laughing Gull, *Leucophaeus atricilla* (Sc#929 surch) Laridae

LITHUANIA 2012 September 29 C*

A sheet showing various animals on banknotes for the 20th Anniversary of the Lithuanian Banknote System. Designer: D. Gasiunaite. Offset by Austrian Government Printing Office in sheets of nine.

983 2L Northern Lapwing, *Vanellus vanellus* Charadriidae
 Mistle Thrush, *Turdus viscivorus* Turdidae

MALAYSIA 2012 March 8 B*

A horizontal set of two stamps (Sc#1383a–b) for Malaysia Antarctic Research Program, with one stamp featuring a bird. Designer: Hazel Design. Offset by National Security Printer.

1383b 90c Emperor Penguin, *Aptenodytes forsteri* Spheniscidae

2012 June 21 C*

Stamps denoting Traditional Occupations (Sc#1401a–b) with one stamp featuring men with bird and bird cage. Designer: Peter Chuah. Offset by Percetakan Keselamatan.

1401b 80c Java Sparrow, *Lonchura oryzivora* Estrildidae

MARSHALL ISLANDS 2010 June 1 B*

A pane of 20 stamps (Sc#964a–t) in the Constellations type issue of 2008, but only one stamp features a bird.

964d 44c Keel-billed Toucan, *Ramphastos sulfuratus* Ramphastidae

2012 July 7 A*

A set of six high-value stamps (Sc#995–1000) for various Priority Rates, but only one features birds. No designer information. Offset, but no printer information.

999 \$18.30 Micronesian Imperial-Pigeon, *Ducula oceanica* Columbidae

MARSHALL ISLANDS (continued) 2012 July 16 C*

A sheet of 12 se-tenant stamps (Sc#1036a–l) to mark the 10th Anniversary of the Euro. One of the coins has a bird that is fairly identifiable (the coin for Finland), but two other coins with birds (Germany and Greece) are not. Designer: Zoe Seemel. Offset by Pioneer Printing.

1036c 45c Whooping Swan, *Cygnus cygnus* Anatidae

2012 September 28 C*

A 12-stamp pane (Sc#1040a–l) for the 12 days of Christmas, with three stamps featuring birds. Designer: Eric Stemp. Offset by Pioneer Printing.

1040a 45c Rock Partridge, *Alectoris graeca* Phasianidae

1040f 45c Canada Geese, *Branta canadensis* Anatidae

1040g 45c Mute Swan, *Cygnus olor* Anatidae

2013 January 10 A*

A pane of ten stamps, in se-tenant format, titled “Birds of the World – 1,” which could imply additional issues in the future. Designer: Chuck Ripper. Offset by Pioneer Printing.

1043a 45c Great Hornbill, *Buceros bicornis* Bucerotidae

1043b 45c Peregrine Falcon, *Falco peregrinus* Falconidae

1043c 45c Bald Eagle, *Haliaeetus leucocephalus* Accipitridae

1043d 45c Channel-billed Toucan, *Ramphastos vitellinus* Ramphastidae

1043e 45c Secretary-Bird, *Sagittarius serpentarius* Sagittariidae

1043f 45c Black-bellied Bustard, *Lissotis melanogaster* Otididae

1043g 45c Toco Toucan, *Ramphastos toco* Ramphastidae

1043h 45c Hyacinth Macaw, *Anodorhynchus hyacinthinus* Psittacidae

1043i 45c Burrowing Owl, *Athene cucularia* Strigidae

1043j 45c Bald Ibis, *Geronticus calvus* Threskiornithidae

MICRONESIA 2011 April 6 A*

A pane of four se-tenant stamps (Sc#920a–d) for the 100th Anniversary of “The First Humans to Reach the South Pole” by Roald Amundsen’s Expedition, but only one stamp features birds. No designer information. Offset, no printer information.

920c 98c Emperor Penguin, *Aptenodytes forsteri* Spheniscidae

MONTENEGRO 2011 March 17 A*

Four stamps (Sc#272–75) of fauna, but only two stamps feature birds. Designer: Darko Vuckovic. Offset by Blicdruk.

274 40c Dalmatian Pelican, *Pelecanus crispus* Pelecanidae

275 90c Pygmy Cormorant, *Phalacrocorax pygmaeus* Phalacrocoracidae

MOROCCO 2011 May 30 A*

A pair of stamps (Sc#1132–33) for flora and fauna, with one stamp featuring a bird. Designer: Waguaf. Offset by Philaposte.

1132 3.50d Wild Turkey, *Meleagris gallopavo* Phasianidae

NAMIBIA 2011 June 7 C*

Five se-tenant, non-denominated “Postcard Rate” stamps (Sc#1207–11) for Tourism/Gonawana Lodges, but only one stamp features a bird. Designer: Helge Denker. Offset, with se-tenant labels that can be personalized. Each stamp sold for \$5.

1209 (\$5) Verreaux’s Eagle, *Aquila verreauxii* Accipitridae

1211a Sheet of 5 (Sc#1207–11) (sheet sold for \$35)

PHILIPPINES **2012 March 16** **B***

Four se-tenant stamps (Sc#3420a–d) for the 75th Anniversary for Davao City, but only one stamp features a bird, in a circled area on the right-hand lower corner. Designer: Victorino Z. Serevo. Offset by Amstar.

3420d 7p Great Philippine Eagle, *Pithecophaga jefferyi* Accipitridae

POLAND **2012 October 10** **C***

A single stamp for Nature Painter Piotr Kwit. Designer: Agata Tobolczyk. Gravure by State Printer.

4056 1.55z Eurasian Bullfinch, *Pyrrhula pyrrhula* Fringillidae

ROMANIA **2012 January** **B***

A set of ten stamps (Sc#5324–33) issued over two separate dates in January 2012, for flowers. Three of the stamps show birds on the right-hand side. Designers: Mihai Vamasescu and Stan Pelteacu. Offset in sheets of 80, miniature sheets of eight stamps and a central label, and miniature sheets of four with six labels.

5325 60b Wild Turkey, *Meleagris gallopavo* Phasianidae
 5327 1.20l Red Junglefowl, *Gallus gallus* Phasianidae
 5333 7.60l Barn Swallow, *Hirundo rustica* Hirundinidae

ST MARTIN **2011 October 6** **A***

A set of five non-denominated “A” stamps (Sc#8–12) and a set of seven denominated stamps (Sc#13–19). The lone bird stamp is in the set of denominated stamps. Designer: Studio Labranda. Offset by Austrian Government Printing.

18 285c Brown Pelican, *Pelecanus occidentalis* Pelecanidae

ST PIERRE & MIQUELON **2012 September 15** **C***

A single stamp in a large landscape format titled “Meet the Poitou.” Designers: R. Goineau and R. Irolla. Engraver: Elsa Catelin. Intaglio and offset by Philapost.

959 €1.15 Mute Swan, *Cygnus olor* Anatidae
 Atlantic Puffin, *Fratercula arctica* Alcidae

ST VINCENT & GRENADINES **2011 February 9** **A***

A SS of seven se-tenant stamps (Sc#3750a–g) with two labels showing animals, issued for the 2011 International Philatelic Exhibition (INDIPEX) held in New Delhi, India, but only one stamp features a bird. No designer information. Offset, but no printer information.

3750a \$1.85 Indian Peafowl, *Pavo cristatus* Phasianidae

SERBIA **2011 July 12** **A***

Belgrade Zoo 75th Anniversary. One single stamp (non-bird), and a sheet of four se-tenant stamps (Sc#562a–d) of white or albino animals, but only one stamp features a bird. Designer: N. Skocajic. Offset by Forum.

562b 44d Egyptian Vulture, *Neophron percnopterus* Accipitridae

SPAIN **2011 January 3** **C***

A single self-adhesive, non-denominated “B” stamp for tourism. Designer: J. Carrero. Offset by National Printer.

3761 (65c) European Goldfinch, *Spinus carduelis* (inside a frame) Fringillidae

2012 April 26 **C***

Three stamps (Sc#3847–49) for Spanish Cinema, but only one stamp features a small bird as part of the stamp design. Stamps are for 2012 Goya Award for Best Film. No designer information. Offset by National Printer.

3848 36c Eurasian Jackdaw, *Corvus monedula* Corvidae

SOUTH AFRICA**2012 April 20****A***

A sheet of eight circular, non-denominated self-adhesive "Standard Postage" stamps (Sc#1477a–h) for National Symbols of South Africa, but only one stamp features a bird. Designer: Lize Marie Dreyer. Offset by Southern Colour Security Print.

1477h (2.65r) Blue Crane, *Anthropoides paradiseus* Gruidae

TONGA**2010 May 10****A***

Two prior Niuafou stamps have been re-issued and surcharged: Sc#203 from a WWF set (Sc#202–05) issued 15 May 1998, and Sc#235 from a set of owls (Sc#234–37) issued 21 November 2001.

1155 70s Blue-crowned Lorikeet, *Vini australis* Psittacidae

1156 70s Barn Owl, *Tyto alba* Tytonidae

2012 August 30**A***

Four se-tenant 25pa Air Post Special Delivery stamps with white frames all around and with white frames on two sides only, which is the same format as the issue for Niuafou, below. Designer: Allison Dittko. Offset, no printer information.

CE2 25pa Short-eared Owl, *Asio flammeus*, (all around white frames) Strigidae

CE3 25pa Same bird (in flight to right)

CE4 25pa Same bird (on ground)

CE5 25pa Same bird (in flight straight ahead)

CE6a 25pa Same bird as above, white frames on two sides only Strigidae

CE6b 25pa Same bird as above, white frames on two sides only

CE6c 25pa Same bird as above, white frames on two sides only

CE6d 25pa Same bird as above, white frames on two sides only

TONGA (Niuafou)**2012 August 30****A***

Four se-tenant 25pa Air Post Special Delivery stamps of owls. They exist with white frames all around and with white frames on two sides only. Designer: Allison Dittko. Offset, no printer information.

CE1 25pa Barn Owl, *Tyto alba* (white frames, four sides) Tytonidae

CE2 25pa Same bird (looking right)

CE3 25pa Same bird (looking left)

CE4 25pa Same bird (three birds)

CE5a 25pa Same bird as above, white frames on two sides only

CE5b 25pa Same bird as above, white frames on two sides only

CE5c 25pa Same bird as above, white frames on two sides only

CE5d 25pa Same bird as above, white frames on two sides only

TRINIDAD & TOBAGO**2012****A***

A stamp from the set issued on 17 December 1990 (Sc#509–20) has been surcharged.

889 \$1 Channel-billed Toucan, *Ramphastos vitellinus* (on Sc#515) Ramphastidae

TRISTAN DA CUNHA**2013 January 28****A***

A set of four stamps, with and without white border frames, and a SS for World Wildlife Fund. All the stamps have the WWF panda emblem. Designer: Andrew Robinson. Offset by Cartor.

983	35p	Tristan Albatross, <i>Diomedea exulans dabbenena</i> (a subspecies of Wandering Albatross)(with white frames)	Diomedidae
987a	35p	Same bird without white frames.	
984	45p	Same bird with white frames	
987b	45p	Same bird without white frames	
985	70p	Same bird with white frames	
987c	70p	Same bird without white frames	
986	£1.10	Same bird with white frames	
987d	£1.10	Same bird without white frames	
988	SS £3	Same bird	

TURKEY**2011 May 9****C***

A two-stamp issue for Europa (Sc#3254–55) with one bird on a tree. No designer information. Offset by Ajans-turk.

3254	90k	Great Spotted Woodpecker, <i>Dendrocopos major</i>	Picidae
------	-----	--	---------

UKRAINE**2011 November 25****B***

A pane of six stamps (Sc#844a–f) titled “Spring,” but only one stamp features a bird. Designer: Natalia Kokhal. Offset by Ukraina.

844a	1.80h	European Robin, <i>Erithacus rubecula</i>	Muscicapidae
------	-------	---	--------------

UNITED ARAB EMIRATES**2011 November 30****A***

A pane of ten stamps (Sc#1024–33) for Bu Tinah Island/Seven New Wonders of Nature Finalist, with two stamps featuring birds. No designer information. Offset, no printer information.

1028	1d	Socotra Cormorant, <i>Phalacrocorax nigrogularis</i>	Phalacrocoracidae
1032	1d	Greater Flamingo, <i>Phoenicopterus roseus</i>	Phoenicopteridae
1034	SS 15d	with above two birds and Osprey, <i>Pandion haliaetus</i>	Pandionidae

UNITED STATES**2012 January 23****A***

A single self-adhesive stamp for the new 3-ounce first-class letter rate. Design artist: Robert Giusti. Offset by Ashton Potter.

4737	86c	Atlantic Puffin, <i>Fratercula arctica</i>	Alcidae
------	-----	--	---------

VANUATU**2011 September 28****C***

Four stamps (Sc#1012–15) titled “Beaches,” but only one stamp features a bird, which I will call an “artist rendering,” as the stamp is in a blue or purple outline. Designer: Denise Durkin. Offset by Southern Colour Print.

1012	100v	Red-tailed Tropicbird, <i>Phaethon rubricauda</i>	Phaethontidae
------	------	---	---------------

VANUATU (continued)

2012 May 2

A*

A pane of 12 se-tenant stamps, all birds. Designer: Donna McKenna. Offset by Southern Colour Print.

1025	10v	Southern Shrikebill, <i>Clytorhynchus pachycephaloides</i>	Monarchidae	Vol. 61(3)
1026	20v	Silver-eye, <i>Zosterops lateralis</i>	Zosteropidae	
1027	40v	Red-bellied Fruit-Dove, <i>Ptilinopus greyii</i>	Columbidae	
1028	50v	Pacific Imperial-Pigeon, <i>Ducula pacifica</i>	Columbidae	
1029	70v	Long-tailed Triller, <i>Lalage leucopyga</i>	Campephagidae	
1030	90v	Vanuatu Scrubfowl, <i>Megapodius layardi</i>	Megapodiidae	Vol. 61(3)
1031	100v	Streaked Fantail, <i>Rhipidura spilodera</i>	Rhipiduridae	Vol. 61(3)
1032	140v	Dark-brown Honeyeater, <i>Lichmera incana</i>	Meliphagidae	Vol. 61(3)
1033	160v	Vanuatu Petrel, <i>Pterodroma occulta</i>	Procellariidae	Vol. 61(3)
1034	400v	Ruddy Turnstone, <i>Arenaria interpres</i>	Scolopacidae	
1035	500v	Purple Swampphen, <i>Porphyrio porphyrio</i>	Rallidae	
1036	1000v	Striated Heron, <i>Butorides striata solomonensis</i>	Ardeidae	
1036a		SS of 12 (Sc#1025–36)		

BIRD OF THE YEAR POSTMARK

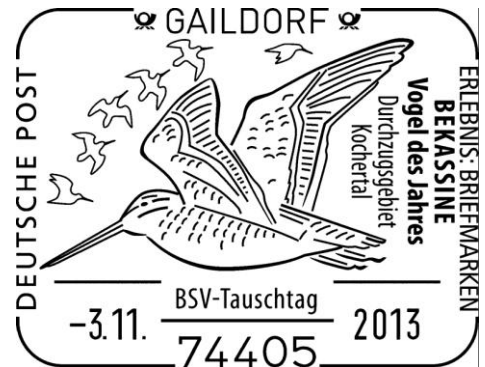
We have been informed of a special postmark created to commemorate the Bird of the Year at a local philatelic exhibition to be held in Gaildorf, Germany on 3 November 2013. The selection for this year's bird is the *Bekassine*, or Common Snipe (*Gallinago gallinago*).

This show is sponsored by BSV Gaildorf. BSV is an acronym that stands for *Briefmarkensammlerverein* (postmark collectors club).

The Common Snipe is a small, stocky wader native to the Old World. The breeding habitat is marshes, bogs, tundra, and wet meadows throughout northern Europe and northern Asia.

Collectors interested in obtaining a copy of this postmark should contact:

Axel Brockmann
BSV Gaildorf
Postfach 13
74536 ROSENGARTEN
GERMANY



Further information is available on their web site (in German) at: www.bsv-gaildorf.de. Their site shows examples of avian postmarks from previous shows, but there is no indication that these are still available.

NEW BIRDS IN THE PHILATELIC AVIARY

Charles E. Braun, BU1364

Corrections

The Laughing Owl [Vol. 61(2)] has appeared earlier on issues from Tanzania (1990) and New Zealand (1996).

New Birds



EATON'S PINTAIL, *Anas eatoni* Anatidae
French Southern and Antarctic Territories, 2013 January 2, not yet cataloged, 60c

Length: 12 to 16 inches, resident. The male (foreground) is brown with a green speculum. The female (background) has a brown speculum.

Habitat: Shallow freshwater marshes, small lakes, and rivers, preferably with dense vegetation.

Range: Southern Indian Ocean on Kerguelen and Crozet Islands. Introduced to St. Paul and Amsterdam Islands.

Reference: del Hoyo, J., A. Elliott, and J. Sargatal, Eds. *Handbook of the Birds of the World, Volume 1*.



GRAY-HEADED KITE, *Leptodon cayanaensis* Accipitridae
St. Martin, 2012 December 12, not yet cataloged, 240c

Length: 18 to 22 inches, sexes alike, resident. Black above and white below with a gray head and two white tail bands.

Habitat: Rainforest, particularly near water.

Range: Southern Mexico to Trinidad, Paraguay, and northern Argentina.

Reference: del Hoyo, J., A. Elliott and J. Sargatal, Eds. *Handbook of the Birds of the World, Volume 2*.



PEARL KITE, *Gampsonyx swainsonii* Accipitridae
St. Martin, 2012 December 12, not yet cataloged, 200c

Length: 8 to 11 inches, sexes alike, resident. Blackish above and white collar and below with yellowish forehead and cheek patches. The stamp shows the *leona* subspecies that has rufous flanks.

Habitat: Dry to arid regions.

Range: Nicaragua to northern Peru and northern Argentina.

Reference: del Hoyo, J., A. Elliott and J. Sargatal, Eds. *Handbook of the Birds of the World, Volume 2*.



SILVER-CAPPED FRUIT-DOVE, *Ptilinopus richardsii* Columbidae
Solomon Islands, 2013 March 15, not yet cataloged, \$5

Length: 8 to 9 inches, sexes alike, resident. Green with a silvery gray forehead, crown, breast, and malar area; pale yellow throat; and a bright orange belly patch.

Habitat: Forest.

Range: Eastern and southeastern Solomon Islands.

Reference: del Hoyo, J., A. Elliott and J. Sargatal, Eds. *Handbook of the Birds of the World, Volume 4*.



BRUSH CUCKOO, *Cacomantis variolosus* Cuculidae
Solomon Islands, 2013 March 15, not yet cataloged, \$5

Length: 8 to 11 inches, sexes alike, resident. Blackish above and paler below with a gray head. The stamp shows the *addendus* subspecies, which is rufous below.

Habitat: Forest and undergrowth.

Range: Southern Thailand to the Philippines, Solomon Islands, and eastern Australia.

Reference: del Hoyo, J., A. Elliott and J. Sargatal, Eds. *Handbook of the Birds of the World, Volume 4*.



PLAIN-BELLIED EMERALD, *Agyrtria leucogaster* Trochilidae
St. Martin, 2012 December 12, not yet cataloged, 10c

Length: 4 inches, sexes similar, resident. Green above and white below with bluish-black wings.

Habitat: Mangroves, plantations, parks and gardens.

Range: East coast of South America from eastern Venezuela to eastern Brazil.

Reference: del Hoyo, J., A. Elliott and J. Sargatal, Eds. *Handbook of the Birds of the World, Volume 5*.



PIPING HORNBILL, *Ceratogymna fistulator* Bucerotidae
Togo, 2013 March 1, not yet cataloged, 750fr

Length: 18 inches, sexes similar but the female is smaller, resident. Black with a white belly, rump, and outer tail.

Habitat: Forest.

Range: Senegal to Zaire and Sudan.

Reference: del Hoyo, J., A. Elliott and J. Sargatal, Eds. *Handbook of the Birds of the World, Volume 6*.



BLACK-AND-WHITE CASQUED HORNBILL, *Ceratogymna subcylindrica* Bucerotidae
Togo, 2013 March 1, not yet cataloged, 750fr

Length: 24 to 28 inches, resident. The male (shown) is black with a white lower back, belly, and thighs and a large casque with a white patch at the top base. The female has a much smaller casque with no white.

Habitat: Forest and plantations.

Range: Sierra Leone to northwestern Tanzania and northern Angola.

Reference: del Hoyo, J., A. Elliott and J. Sargatal, Eds. *Handbook of the Birds of the World, Volume 6*.



PALE-BREASTED SPINETAIL, *Synallaxis albescens* Furnariidae
Surinam, 2013 February 20, not yet cataloged, \$2.25

Length: 5 to 6 inches, sexes alike, resident. Dull olive-brown above and white below with a rufous crown and wing patch, brownish-gray face, and black flecking on the lower throat.

Habitat: Grasslands, savanna, brush, and shrub-steppe.

Range: southwestern Costa Rica to northern Argentina.

Reference: del Hoyo, J., A. Elliott and J. Sargatal, Eds. *Handbook of the Birds of the World, Volume 8*.



MCCONNELL'S SPINETAIL, *Synallaxis macconnelli* Furnariidae
Surinam, 2013 February 20, not yet cataloged, \$3.25

Length: 6 to 7 inches, sexes alike, resident. Dark olive-brown above and brownish-gray below with a dark rufous crown, nape, and wings.

Habitat: Forest and forest edges.

Range: Southeastern Venezuela to extreme northeastern Brazil.

Reference: del Hoyo, J., A. Elliott and J. Sargatal, Eds. *Handbook of the Birds of the World, Volume 8*.



SPECKLED SPINETAIL, *Certhiopsis gutturata* Furnariidae
Surinam, 2013 February 20, not yet cataloged, \$4.25

Length: 5 to 6 inches, sexes alike, resident. Ochraceous brown above and supercilium and finely spotted pale below with a rufous cap, wings, and tail.

Habitat: Tropical forest.

Range: Southeastern Colombia and Southern Venezuela to Surinam and northern Bolivia.

Reference: del Hoyo, J., A. Elliott and J. Sargatal, Eds. *Handbook of the Birds of the World, Volume 8*.



RUDDY FOLIAGE-GLEANER, *Automolus rubiginosus* Furnariidae
Surinam, 2013 February 20, not yet cataloged, \$7.50

Length: 7 to 8 inches, sexes alike, resident. Dark reddish-brown above and slightly paler below with a white eye ring.

Habitat: Evergreen forest.

Range: Southwestern Mexico to northeastern Brazil and northern Peru.

Reference: del Hoyo, J., A. Elliott and J. Sargatal, Eds. *Handbook of the Birds of the World, Volume 8*.



RUDDY-TAILED FLYCATCHER, *Terenotriccus erythrus* Tyrannidae
Surinam, 2013 February 20, not yet cataloged, \$1.75

Length: 4 inches, sexes alike, resident. Gray above and cinnamon-buff below with a rufous tail.

Habitat: Forest.

Range: Southern Mexico to Brazil.

Reference: del Hoyo, J., A. Elliott and J. Sargatal, Eds. *Handbook of the Birds of the World, Volume 9*.



RUFIOUS-SIDED PYGMY-TYRANT, *Euscarthmus rufomarginatus* Tyrannidae
Surinam, 2012 February 20, not yet cataloged, \$9.50

Length: 4.5 inches, sexes alike, resident. Brown above and pale yellow below with a white throat and warm ochraceous-buff flanks.

Habitat: Pristine *campo* and *campo-cerrado* and tall shrubby grassland.

Range: Central Brazil and southern Surinam.

Reference: del Hoyo, J., A. Elliott and J. Sargatal, Eds. *Handbook of the Birds of the World, Volume 9.*



FORTY-SPOTTED PARDALOTE, *Pardalotus quadragintus* Pardalotidae
Australia, 2013 May 11, not yet cataloged, 60c

Length: 3.5 to 4.5 inches, sexes similar, resident. Olive-green above and gray-white below with two lines of white spots on black wings.

Habitat: Eucalypt.

Range: East and south coasts of Australia.

Reference: del Hoyo, J., A. Elliott and J. Sargatal, Eds. *Handbook of the Birds of the World, Volume 13.*



RED-BROWED PARDALOTE, *Pardalotus rubricatus* Pardalotidae
Australia, 2013 May 11, not yet cataloged, \$1.80

Length: 3.5 to 4.5 inches, sexes similar, resident. Fawn-brown above and pale below with a yellow wash, with a white-spotted black crown and a creamy supercilium with a red spot.

Habitat: Woodlands.

Range: Northern and central Australia.

Reference: del Hoyo, J., A. Elliott and J. Sargatal, Eds. *Handbook of the Birds of the World, Volume 13.*



STRIATED PARDALOTE, *Pardalotus striatus* Pardalotidae
Australia. 2013 May 11, not yet cataloged, \$3

Length: 3.5 to 5 inches, sexes similar, resident. Gray above and yellow below with a black head and yellow-and-white supercilium.

Habitat: Eucalypt.

Range: Australia except west-central and outback.

Reference: del Hoyo, J., A. Elliott and J. Sargatal, Eds. *Handbook of the Birds of the World, Volume 13.*



PALM TANAGER, *Thraupis palmarum* Thraupidae
Surinam, 2013 February 20, not yet cataloged, \$3.75

Length: 7 inches, sexes similar, resident. Grayish olive or yellow with a two-toned wing

Habitat: Forest and clearings.

Range: Eastern Nicaragua to northern Argentina.

Reference: del Hoyo, J., A. Elliott and J. Sargatal, Eds. *Handbook of the Birds of the World, Volume 15.*

**JAMBANDU INDIGOBIRD, *Vidua raricola*** Viduidae

Togo, 2013 March 1, not yet cataloged, 750fr

Length: 4 inches, resident. The male (shown) is black with a bright green gloss and brownish wings. The female is brown above and gray below with a whitish supercilium.

Habitat: Grassy wetlands and marshes.

Range: Sierra Leone to Zaire, Ethiopia, and Sudan.

Reference: del Hoyo, J., A. Elliott and J. Sargatal, Eds. *Handbook of the Birds of the World, Volume 15*

**CAMEROON INDIGOBIRD, *Vidua camerunensis*** Viduidae

Togo, 2013 March 1, not yet cataloged, 750fr

Length: 4 inches, resident. The male (shown) is black with a blue to bluish-green gloss with brown wings and tail. The female is brown above and whitish below with a white neck and supercilium.

Habitat: River edges and cultivated lands.

Range: Guinea-Bissau to the Congo and Sudan.

Reference: del Hoyo, J., A. Elliott and J. Sargatal, Eds. *Handbook of the Birds of the World, Volume 13*.

**QUAILFINCH INDIGOBIRD, *Vidua nigeriae*** Viduidae

Togo, 2013 March 1, not yet cataloged, 750fr

Length: 4 inches, resident. The male (foreground) is black with a dull green gloss with brown wings; the female (background) is brown above and whitish below with a white neck and supercilium and purplish legs.

Habitat: Open areas.

Range: Gambia to southern Sudan.

Reference: del Hoyo, J., A. Elliott and J. Sargatal, Eds. *Handbook of the Birds of the World, Volume 13*.

**BARKA INDIGOBIRD, *Vidua larvaticola*** Viduidae

Togo, 2013 March 1, not yet cataloged, 750fr

Length: 4 inches, resident. The male (shown) is black with a blue to blue-green gloss with dark brown wings. The female is brown above and whitish below with a white neck and supercilium and purplish-gray or whitish legs.

Habitat: Riverine thickets, wooded savannas, and grassland.

Range: Guinea-Bissau to Sudan.

Reference: del Hoyo, J., A. Elliott and J. Sargatal, Eds. *Handbook of the Birds of the World, Volume 13*.

**PALE-WINGED INDIGOBIRD, *Vidua wilsoni*** Viduidae

Togo, 2013 March 1, not yet cataloged, 2500fr

Length: 4 inches, resident. The male (shown) is black with purple to bluish-purple gloss with brown wings; the female is brown above and whitish below with a white neck and supercilium and gray legs.

Habitat: Grassland and farms.

Range: Senegal to western Ethiopia.

Reference: del Hoyo, J., A. Elliott and J. Sargatal, Eds. *Handbook of the Birds of the World, Volume 13*.



ICHTHYOLOGY

Editor

Kris P. Lindstrom, LM77



New Listings

Scott#	Denom	Common Name/Scientific Name	Family/Subfamily	Code
ANGOLA				
2006 April 26 (23rd Conference African Oil Producing Countries)(SS)				
1294	51k	Striped Marlin		Z
ANTIQUA				
2012 September 24 (Seahorses)(Sheet of five)				
3191a	\$3	Seahorse	Syngnathidae	A
3191b	\$3	Seahorse	Syngnathidae	A
3191c	\$3	Seahorse	Syngnathidae	A
3191d	\$3	Seahorse	Syngnathidae	A
3191e	\$3	Seahorse	Syngnathidae	A
2012 December 3 (Caribbean Marine Life)(Sheet of 12)				
3200a	\$1.25	Copperband Butterflyfish, <i>Chaetodon rostratus</i>	Chaetodontidae	A
3200b	\$1.25	Butterflyfish sp.	Chaetodontidae	A
3200e	\$1.25	Masked (Hooded) Butterflyfish, <i>Chaetodon larvatus</i>	Chaetodontidae	A
3200g	\$1.25	Ocellaris Clownfish, <i>Amphiprion ocellaris</i>	Pomacentridae	A
3200k	\$1.25	Ocellaris Clownfish, <i>Amphiprion ocellaris</i>	Pomacentridae	A
2012 December 3 (Stingrays and Skates)(Sheet of four and SS)				
3201a	\$3	Blue skate, <i>Dipturus batis</i>	Rajidae	A
3201b	\$3	Longnose Skate, <i>Dipturus oxyrinchus</i>	Rajidae	A
3201c	\$3	Longnose Skate, <i>Dipturus oxyrinchus</i>	Rajidae	A
3201d	\$3	Small-eyed Ray, <i>Raja microocellata</i>	Rajidae	A
3202	\$9	Cuckoo Ray, <i>Leucoraja naevus</i>	Rajidae	A
ARUBA				
2012 November 15 (Underwater Exploration)(Block of 10)				
410a	100c	U/I fish (Stylized Spanish Hogfish)		S
410b	100c	U/I fish (Stylized Sergeant Major)		S
410c	100c	Spotted Eagle Ray, <i>Aetobatus narinari</i>	Myliobatidae	A
410d	100c	Imperial (Emperor) Angelfish, <i>Pomacanthus imperator</i>	Pomacanthidae	A
410e	100c	Turtle (no fish)		R
410f	100c	Shipwreck on side with stylized fish		S
410g	100c	Diver, shipwreck (no fish)		R
410h	100c	Shipwreck upright with stylized fish		S
410i	100c	Shipwreck (no fish)		R
410j	100c	Sunken airplane with stylized fish		S
AUSTRALIA				
2012 September 18 (Road Trips)(Sheet of five and SS, s/a bklt)				
3763	60c	Volkswagen bus at Great Barrier Reef (any fish?)		U
3766a		Sheet of five (Sc#3762-66)(any fish?)		U
3767	60c	Volkswagen bus at Great Barrier Reef (s/a)(any fish?)		U
3769a		Bklt pane 10 (3ea Sc#3767/3769, 4ea Sc#3768)(any fish?)		U

BENIN		1993 (Dahomey #312 ovpt)		
698	5fr	White Grouper, <i>Epinephelus aeneus</i>	Serranidae	A
		2005-08? (Benin Sc#1151 surch like Sc#1334)		
1347	175fr	Dwarf Rasbora, <i>Rasbora maculata</i>	Cyprinidae	A
		2005-09? (Benin Sc#1050 surch like Sc#1334)		
1408	175fr	Empress Angelfish, <i>Pygoplites diacanthus</i>	Pomacanthidae	A
BOLIVIA		2011 October 21 (Endangered Fish)(Set of four)		
1467	1b	<i>Orestias agassizii</i>	Cyprinodontidae	A
1468	1.50b	Peacock Bass, <i>Cichla pleiozona</i>	Cichlidae	A
1469	3b	Cachama, <i>Colossoma macropomum</i>	Serrasalmidae	A
1470	9b	<i>Orestias luteus</i>	Cyprinodontidae	A
BRAZIL		2011 June 5 (Marine Life)(Sheet of four)		
3171	2.70r	U/I fish in background		U
		2011 October 21 (Bible)(Pair Sc#3194a-b)		
3194	2.70r	Fish (Christian sign)		S
BRUNEI		2011 November 1 (Horiz pair Sc#628a-b)		
628a	20c	Fishermen at work		R
BURUNDI		2011 December 1 (Birds)		
870	3000fr	Yellow-billed Stork (<i>Mycteria ibis</i>) eating a fish		B
		2011 December 1 (Fish and Marine Life)(Set of four and MS of four)		
892	1000fr	Atlantic guitarfish, <i>Rhinobatos lentiginosus</i>	Rhinobatidae	A
893	1090fr	Common Fangtooth, <i>Anoplogaster cornuta</i>	Anoplogastridae	A
894	3000fr	Zebra Shark, <i>Stegostoma fasciatum</i>	Stegostomatidae	A
896a	1000fr	Blacktip Shark, <i>Carcharhinus limbatus</i>	Carcharhinidae	A
896b	1020fr	Bat Ray, <i>Myliobatis californica</i>	Myliobatidae	A
896c	3000fr	Pacific Seahorse, <i>Hippocampus ingens</i>	Syngnathidae	A
896d	3000fr	Oceanic Sunfish, <i>Mola mola</i>	Molidae	A
		2012 August 31 (Plastic Waste in North Pacific)		
1115a	1070fr	U/I fish in net		U
		2012 August 31 (Endangered Fish)(Sheets of four and SS)		
1118a	1070fr	Great White Shark, <i>Carcharodon carcharias</i>	Lamnidae	A
1118b	1070fr	Great White Shark, <i>Carcharodon carcharias</i>	Lamnidae	A
1118c	3000fr	Great White Shark, <i>Carcharodon carcharias</i>	Lamnidae	A
1118d	3000fr	Great White Shark, <i>Carcharodon carcharias</i>	Lamnidae	A
1120a	1070fr	Great White Shark, <i>Carcharodon carcharias</i>	Lamnidae	A
1120b	1070fr	Great White Shark, <i>Carcharodon carcharias</i>	Lamnidae	A
1120c	3000fr	Great White Shark, <i>Carcharodon carcharias</i>	Lamnidae	A
1120d	3000fr	Great White Shark, <i>Carcharodon carcharias</i>	Lamnidae	A
1126a	1070fr	Malawi Thick-lip, <i>Cheilochromis euchilus</i>	Cichlidae	A
1126b	1070fr	Emperor Angelfish, <i>Pomacanthus imperator</i>	Pomacanthidae	A
1126c	3000fr	Yellow-ear angelfish, <i>Apolemichthys xanthurus</i>	Pomacanthidae	A
1126d	3000fr	Coral Trout, <i>Cephalopholis miniata</i>	Serranidae	A
1138	7500fr	Great White Shark, <i>Carcharodon carcharias</i>	Lamnidae	A
1140	7500fr	Great White Shark, <i>Carcharodon carcharias</i>	Lamnidae	A
1146	7500fr	Yellowband Angelfish, <i>Pomacanthus maculosus</i>	Pomacanthidae	A

CARIBBEAN NETHERLANDS		2012 November 1 (Arms and Christmas ornaments)(Set of three)		
34	66c	Stylized fish in Saba coat of arms		S
CAYMAN ISLANDS		2012 October 9 (Marine Life)(Set of 12, Sc#1106–17, wmk 406)		
1106	25c	Stoplight Parrotfish, <i>Sparisoma viride</i>	Scaridae	A
1110	\$1	Juvenile Yellowtail Damsel fish, <i>Microspathodon chrysurus</i>	Pomacentridae	A
1111	\$1.50	Spotted Trunkfish, <i>Lactophrys bicaudalis</i>	Ostraciidae	A
1114	\$4	Caribbean Reef Shark, <i>Carcharhinus perezi</i>	Carcharhinidae	A
1115	\$5	Great Barracuda, <i>Sphyraena barracuda</i>	Sphyraenidae	A
1116	\$10	Southern Stingray, <i>Dasyatis americana</i>	Dasyatidae	A
CHINA P. R.		2012 August 23 (Riding a Carp to Heaven)(Set of four)		
4035	\$1.20	Common Carp, <i>Cyprinus carpio</i>	Cyprinidae	S
CHRISTMAS ISLAND		2011 October 31 (Santa Claus)(Set of two and bkt)		
498	\$1.50	Santa in water with flippers)(any fish?)		U
500	\$1.50	Santa in water with flippers)(any fish?)		U
500a	\$1.50	Bklt pane of 5 (s/a)		U
COMORO ISLANDS		2008 October 1		
998	3000fr	Submarines and turtle (any fish?)		U
		2009 March 2 (Fish)(Sheet of six and SS)		
1081a	125fr	Coelacanth, <i>Latimeria chalumnae</i>	Coelacanthidae	A
1081b	150fr	Reef Stonefish, <i>Synanceia verrucosa</i>	Scorpaenidae	A
1081c	225fr	Orange Scorpionfish, <i>Scorpaena scrofa</i>	Scorpaenidae	A
1081d	300fr	Barred Mudskipper, <i>Periophthalmus argentilineatus</i>	Gobiidae	A
1081e	400fr	American Angler, <i>Lophius americanus</i>	Lophiidae	A
1081f	1000fr	Wide Sawfish, <i>Pristis microdon</i>	Pristidae	A
1082	3000fr	Brazilian Electric Ray, <i>Narcine brasiliensis</i>	Narcinidae	A
		2009 March 2 (Kingfishers)(Sheet of six)		
1089b	250fr	U/I fish in bird beak?		U
COSTA RICA		2012 June 12 (Bank of Costa Rica 135th Anniv)		
648	275col	U/I stylized fish?		C
CUBA		2011 October 18 (Coral and Fish)(Set of six and SS)		
5249	10c	U/I fish		U
5250	15c	U/I fish		U
5251	20c	U/I fish		U
5252	30c	U/I fish		U
5253	50c	U/I fish		U
5254	65c	U/I fish		U
5255	1p	U/I fish		U
CURAÇAO		2012 January 12 (Fish)(Set of seven)		
62	25c	Blacktip Soldierfish, <i>Myripristis botche</i>	Holocentridae	A
63	150c	Blackfin Squirrelfish, <i>Neoniphon opercularis</i>	Holocentridae	A
64	225c	Giant Squirrelfish, <i>Sargocentron spiniferum</i>	Holocentridae	A
65	325c	Slender Grouper, <i>Anyperodon leucogrammicus</i>	Serranidae	A
66	475c	Tomato Hind, <i>Cephalopholis sonnerati</i>	Serranidae	A
67	500c	White-spotted Grouper, <i>Epinephelus caeruleopunctatus</i>	Serranidae	A
68	700c	Indo-Pacific Sergeant, <i>Abudefduf vaigiensis</i>	Pomacentridae	A

CURAÇAO (continued)		2012 March 12 (Birds)(Sheet of eight)		
72	35c-700c	Fishermen? (margin)		R
		2012 October 9 (Set of three semi-postal)		
B6	190c+75c	Rowboat with stylized fish		S
B7	293c+125c	Rowboat, house, flower, and bird with stylized fish		S
DENMARK		2013 January 7 (Fish)(Sets of four in bklt and s/a)		
1625	6k	Atlantic Herring, <i>Clupea harengus</i>	Clupeidae	A
1625a	6k	Bklt pane of one (Sc#1625)		
1626	8k	Atlantic Cod, <i>Gadus morhua</i>	Gadidae	A
1626a	8k	Bklt pane of one (Sc#1626)		
1627	12.50k	European Flounder, <i>Platichthys flesus</i>	Pleuronectidae	A
1627a	12.50k	Bklt pane of one (Sc#1627)		
1628	14.50k	European Eel, <i>Anguilla anguilla</i>	Anguillidae	A
1628a	14.50k	Bklt pane of one (Sc#1628)		
1628b	27.14k	Bklt pane of four (Sc#1625–28)		
1629	6k	Atlantic Herring, <i>Clupea harengus</i> (die cut 13)	Clupeidae	A
1630	8k	Atlantic Cod, <i>Gadus morhua</i> (die cut 13)	Gadidae	A
1631	12.50k	European Flounder, <i>Platichthys flesus</i>	Pleuronectidae	A
1632	14.50k	European Eel, <i>Anguilla anguilla</i>	Anguillidae	A
1633	6k	Atlantic Herring, <i>Clupea harengus</i> (die cut 13½)	Clupeidae	A
1633a	60k	Bklt pane of 10+10 etiquettes (Sc#1633)(s/a)		
1634	8k	Atlantic Cod, <i>Gadus morhua</i> (die cut 13½)	Gadidae	A
1634a	80k	Bklt pane of 10 (Sc#1634)(s/a)		
ECUADOR		2012 July 11 (Galapagos Islands)(Bklt pane of eight, unwmk, s/a)		
2064h	\$1	Scalloped Hammerhead, <i>Sphyrna lewini</i>	Sphyrnidae	A
GERMANY		2012 September 13 (Children and Cartoon Animals)		
2691	55c	Stylized fish		S
GIBRALTAR		2012 September 14 (Old Views of Gibraltar)(Set of five and SS)		
1344	78p	Waterport (any fish?)		U
GREAT BRITAIN (Guernsey)		2013 February 20 (Fish)(Set of six and SS)		
1194	39p	Tompot Blenny, <i>Parablennius gattorugine</i>	Blenniidae	A
1195	52p	Leopard-spotted Goby, <i>Thorogobius ephippiatus</i>	Gobiidae	A
1196	53p	Red Gurnard, <i>Aspitrigla cuculus</i>	Triglidae	A
1197	59p	Cuckoo Wrasse, <i>Labrus mixtus</i> ♀	Labridae	A
1198	69p	Cuckoo Wrasse, <i>Labrus mixtus</i> ♂	Labridae	A
1199	74p	John Dory, <i>Zeus faber</i>	Zeidae	A
1200	£5	Black-face Blenny, <i>Tripterygion delaisi</i>	Tripterygiidae	A
GREAT BRITAIN (Isle of Man)		2013 February 8 (New Year 2013)(Sheet of six)		
1548b	20p	U/I fish with flowers and butterfly		U
GRENADA-GRENADINES		2012 April 5 (Sharks)(Sheet of five)		
2812a	\$3	Great Hammerhead Shark, <i>Sphyrna mokarran</i>	Sphyrnidae	A
2812b	\$3	Reef Shark, <i>Carcharhinus springeri</i>	Carcharhinidae	A
2812c	\$3	Longfin (Shortfin) Mako Shark, <i>Isurus oxyrinchus</i>	Lamnidae	A
2812d	\$3	Lemon Shark, <i>Negaprion brevirostris</i>	Carcharhinidae	A
2812e	\$3	Great White Shark, <i>Carcharodon carcharias</i>	Lamnidae	A

GUYANA		2012 (Sc#70 surch)			
4107	\$20 on 3c	Butterfly Peacock Bass, <i>Cichla ocellaris</i>		Cichlidae	A
		2012 (Sc#2917 [footnote] surch)			
4122h	\$20 on \$5	Disney characters at work (Aquarist)			S
		2012 (Sc#68 surch)			
4164	\$20 on 1c	Pike Cichlid, <i>Crenicichla lepidota</i>		Cichlidae	A
		2012 (Sc#413Dg surch)			
4174	\$20 on \$1	Pike Cichlid, <i>Crenicichla lepidota</i>		Cichlidae	A
HONG KONG		2012 November 1 (Zodiac)(Set of 12 Sc#1516–27)(granite paper)			
1518	\$1.40	Pisces			S
1527a	\$16.80	Sheet of 12 (Sc#1516–27)(perf 14 syncopated)			
		2012 November 1 (Zodiac)(Set of 12 Sc#1528–39)(s/a)			
1530	\$1.40	Pisces			S
1539a	\$16.80	Coil strip 12 (Sc#1528–39)(die cut 14)(s/a)			
1539b	\$16.80	Bklt pane 12 (Sc#1528–39)(die cut 14)(s/a)			
ICELAND		2012 July 2 (Sc#1150 surch)			
1278	103k on 90k	Fishing boat (no fish)			R
IRAN		2011 (Fish Type of 2009–11)			
[Ed. note: This is a set of eight stamps with the same designs as Sc#2987/2999, but measuring 30×23mm.]					
3055A	300r	Yellowbar Angelfish, <i>Pomacanthus maculosus</i>		Pomacanthidae	A
3055B	400r	Latticed Butterflyfish, <i>Chaetodon rafflesi</i>		Chaetodontidae	A
3055C	500r	Bicolor Angelfish, <i>Centropyge bicolor</i>		Pomacanthidae	A
3055D	1000r	Blue-striped Angelfish, <i>Chaetodontoplus septentrionalis</i>		Pomacanthidae	A
3055E	2000r	Hooded Butterflyfish, <i>Chaetodon larvatus</i>		Chaetodontidae	A
3055F	4000r	Goldtail Angelfish, <i>Pomacanthus chrysurus</i>		Pomacanthidae	A
3055G	5000r	Blue-girdled Angelfish, <i>Pomacanthus navarchus</i>		Pomacanthidae	A
3055H	6400r	Blue Tang, <i>Paracanthurus hepatus</i>		Acanthuridae	A
3055I	7500r	Maroon Clownfish, <i>Premnas biaculeatus</i>		Pomacentridae	A
IRELAND		2012 September 13 (Fionn MacCumhail)(Set of four)			
1980	82c	Man in water with U/I fish			U
1981a	164c	Horiz pair (Sc#1980–81)			
JAPAN		2012 May 15 (Return of Okinawa to Japan)(Sheet of 10)			
3424	80¥	Whale shark and stylized fish, <i>Rhincodon typus</i>		Rhincodontidae	A
		2012 July 3 (Season's Memories in my Heart)(Sheet of 10)			
3448e	80¥	Boy with fishing pole (no fish)			R
		2012 March 6 (Constellations)(Sheet of 10)			
3449c	80¥	Pisces			S
		2012 August 23 (Vert strip of five)			
3466	80¥	Japanese Rice Fish, <i>Oryzias latipes</i>		Adrianichthyidae	A
		2012 October 15 (Sheet of five)			
3482c	80¥	Carp amulets on sticks			S

KIRIBATI**2011 July** (Ovpt "100 Years of Stamps" on Sc#794, Sc#801, Sc#803)

988	40c	Threespot Dascyllus, <i>Dascyllus trimaculatus</i> (Sc#794 ovpt)	Pomacentridae	A
989	\$2	Coral Trout, <i>Cephalopholis miniata</i> (Sc#801 ovpt)	Serranidae	A
990	\$10	Clown Triggerfish, <i>Balistoides conspicillum</i> (Sc#803 ovpt)	Balistidae	A

2012 July 11 (WWF)(Horiz strip of four)

995a	80c	Giant Trevally, <i>Caranx ignobilis</i>	Carangidae	A
995b	\$1	Giant Trevally, <i>Caranx ignobilis</i>	Carangidae	A
995c	\$1.50	Giant Trevally, <i>Caranx ignobilis</i>	Carangidae	A
995d	\$2	Giant Trevally, <i>Caranx ignobilis</i>	Carangidae	A

2012 September 12 (Phoenix Island Marine Life)(Sheet of eight)

996a	40c	Manta Ray, <i>Manta birostris</i>	Myliobatidae	A
996b	50c	Napoleon (Humphead) Wrasse, <i>Cheilinus undulatus</i>	Labridae	A
996c	60c	Yellow and Blueback Fusiliers, <i>Caesio teres</i>	Caesionidae	A
996d	75c	Rainbow Runners, <i>Elagatis bipinnulata</i>	Carangidae	A
996e	\$1	Turtle (any fish?)		R
996f	\$1.50	Ornate Butterflyfish, <i>Chaetodon ornatus</i>	Chaetodontidae	A
996g	\$2	<i>Chrysiptera albata</i>	Pomacentridae	A
996h	\$2.50	Giant Clam (any fish?)		R

KOREA (North)**2006** (Surch stamps of 1963-2002)

4539	3w	Fisherman and net of fish (Sc#447 surch)		G
4565	12w	Purple Puffer, <i>Sphoeroides porphyreus</i> (Sc#1622 surch)	Tetraodontidae	A
4578	128w	U/I sp. with snail (Sc#1619 surch)		B

KOREA (South)**2012 May 11** (Expo 2012, Yeosu)(2ea horiz strips of four)

2383a	270w	Stylized fish with Korea Pavilion (perf 13¼×13)		S
2383b	270w	Stylized fish with Theme Pavilion (perf 13¼×13)		S
2383c	270w	Stylized fish with Big-O (perf 13¼×13)		S
2383d	270w	Stylized fish with Sky Tower (perf 13¼×13)		S
2384a	270w	Stylized fish with Korea Pavilion (perf 13×13¼)		S
2384b	270w	Stylized fish with Theme Pavilion (perf 13×13¼)		S
2384c	270w	Stylized fish with Big-O (perf 13×13¼)		S
2384d	270w	Stylized fish with Sky Tower (perf 13×13¼)		S

LUXEMBOURG**2012 September 25** (Outdoor Activities Type of 2010)(Set of two)

1338	85c	Diving with U/I fish		U
------	-----	----------------------	--	---

MACAO**2012 May 18** (Horiz strip of four and SS)

1367a	1.50p	Fishing harbor view		R
1367b	2.50p	Fishing harbor view		R
1367c	3.50p	Fishing harbor view		R
1367d	4p	Fishing harbor view		R
1368	10p	Fishing harbor view		R

MALAYSIA**2012 March 21** (Marine Life)(Set of four Sc#1384-87 and SS)

1385	60c	Leopard Moray Eel, <i>Enchelycore pardalis</i> (perf 12)	Muraenidae	A
1385a	60c	Leopard Moray Eel, <i>Enchelycore pardalis</i> (perf 13½)	Muraenidae	A
1386	60c	Mandarinfish, <i>Synchiropus splendidus</i> (perf 12)	Callionymidae	A
1386a	60c	Mandarinfish, <i>Synchiropus splendidus</i> (perf 13½)	Callionymidae	A
1388	\$5	Thorny Seahorse, <i>Hippocampus histrix</i>	Syngnathidae	A

MARSHALL ISLANDS		2013 January 28 (Marine Life)(Set of seven)		
1045	33c	Raccoon Butterflyfish, <i>Chaetodon lunula</i>	Chaetodontidae	A
1047	\$1.10	Long-nosed Butterflyfish, <i>Forcipiger flavissimus</i>	Chaetodontidae	A
1048	\$5.60	Tiger Shark, <i>Galeocerdo cuvier</i>	Carcharhinidae	A
1049	\$12.35	Star Puffer, <i>Arothron stellatus</i>	Tetraodontidae	A
1050	\$16.85	Nassau Grouper, <i>Epinephelus striatus</i>	Serranidae	A
1051	\$23.95	Porkfish, <i>Anisotremus virginicus</i>	Haemulidae	A
MONTSERRAT		2012 June 26 (Marine Life)(Sheet of four and SS)		
1293a	\$4	Yellow Tang, <i>Zebrasoma flavescens</i>	Acanthuridae	
1294	\$6	Blue-spotted Grouper (Peacock hind), <i>Cephalopholis argus</i>	Serranidae	
MOZAMBIQUE		2010 November 30 (Ocean Park Aquarium)(SS)		
2155	175m	Zebra shark, <i>Stegostoma fasciatum</i>	Stegostomatidae	A
		2011 January 30 (Piranha)(Sheet of six and SS)		
2171a	16m	Red Piranha, <i>Pygocentrus nattereri ternetzi</i>	Serrasalminidae	A
2171b	16m	<i>Serrasalmus manuelei</i>	Serrasalminidae	A
2171c	16m	Red Piranha, <i>Pygocentrus nattereri</i>	Serrasalminidae	A
2171d	16m	Black Spot Piranha, <i>Pygocentrus cariba</i>	Serrasalminidae	A
2171e	66m	Red Piranha, <i>Pygocentrus nattereri</i>	Serrasalminidae	A
2171f	66m	Red Piranha, <i>Pygocentrus nattereri ternetzi</i>	Serrasalminidae	A
2197	175m	<i>Trachelyopterus insignis</i>	Auchenipteridae	A
2201	175m	Red Piranha, <i>Pygocentrus nattereri</i>	Serrasalminidae	A
		2011 April 30 (Antarctic Treaty)(Sheet of six)		
2259d	16m	U/I Icefish	Channichthyidae	U
PAKISTAN		2012 June 22 (Children's Art Competition)(Sheet of 8+2 labels)		
1168c	8r	Stylized fish		S
ROMANIA		2012 June 15 (Fish)(Set of four, each in sheets of 8 + central label)		
5364	1.4L	Molly, <i>Poecilia sphenops</i>	Poeciliidae	A
5365	3L	Pumpkinseed, <i>Eupomotis (Lepomis) gibbosus</i>	Centrarchidae	A
5366	3.1L	Paradisefish, <i>Macropodus opercularis</i>	Belontiidae	A
5367	14.5L	Firemouth Cichlid, <i>Thorichthys meeki</i>	Cichlidae	A
RUSSIA		2012 July 4 (Belozersk 1050th Anniv)(SS)		
7372	30r	Sturgeon (in crest)	Acipenseridae	G
ST HELENA		2012 June 12 (Children's Art 60th Anniv)(Set of four, wmk 406)		
1054	20p	Stylized fish		S
ST PIERRE & MIQUELON		2012 February 4 (Trawler <i>Le Ravenel</i>)		
948	60c	Fishing Trawler (no fish)		R
		2012 May 16 (<i>Le Travail des Graves</i> by Gaston Rouillet)(Sheet of six)		
955a-f	60c	Dried fish? (various vignettes from painting)		U
ST THOMAS & PRINCE ISLANDS		1992 April 4 (Flora and Fauna Type of 1991)(SS)		
1054M	800d	Sea Turtle with fish in background		B

SLOVAKIA		2011 November 11 (Bklt Christmas Type of 2011)(s/a)		
627	40c	Any fish?		U
627a	400c	Bklt pane 10 (s/a)		
SOUTH AFRICA		2012 April 20 (National Symbols)(Sheet of eight, s/a)		
1477f	2.65r	Galjoen, <i>Coracinus capensis</i>	Dichistiidae	A
SOUTH GEORGIA & SOUTH SANDWICH IS.		2012 November 9 (Marine Protected Area)(Set of six)		
462	75p	Patagonian Toothfish, <i>Dissostichus eleginoides</i>	Nototheniidae	B
463	£1	Lantern Fish, <i>Nannobranchium achirus</i>	Myctophidae	B
SRI LANKA		2012 April 10 (Hindu New Year)(Block of four)		
1832a	5r	Stylized fish		S
1832c	5r	Stylized fish		S
TAJIKISTAN		2012 March 16 (Lunar Calendar)(Set of two)		
384	2.50s	Stylized fish		S
TOKELAU		2012 October 3 (Fish)(Set of four and SS)		
406	40c	Yellowfin Tuna, <i>Thunnus albacares</i>	Scombridae	A
407	45c	Ruby Snapper, <i>Etelis carbunculus</i>	Lutjanidae	A
408	\$1.40	Wahoo, <i>Acanthocybium solandri</i>	Scombridae	A
409	\$2	Common Dolphinfin, <i>Coryphaena hippurus</i>	Coryphaenidae	A
409a		SS of four (Sc#406–09)		
TUNISIA		2012 September 15 (Fish)(Set of four)		
1533	250m	Saupe, <i>Sarpa salpa</i>	Sparidae	A
1534	250m	Marbe (Sand Steenbras), <i>Lithognathus mormyrus</i>	Sparidae	A
1535	600m	Sardine (European Pilchard), <i>Sardina pilchardus</i>	Clupeidae	A
1536	1100m	Sparailon (White Seabream), <i>Diplodus sargus sargus</i>	Sparidae	A
TUVALU		2012 July 15 (Fish)(Set of 12)		
1214	10c	Sling-jaw Wrasse, <i>Epibulus insidiator</i>	Labridae	A
1215	40c	Moorish Idol, <i>Zanclus cornutus</i>	Zanclidae	A
1216	60c	Pearl Wrasse, <i>Anampses cuvier</i>	Labridae	A
1217	90c	Blackbelly Triggerfish, <i>Rhinecanthus verrucosus</i>	Balistidae	A
1218	\$1	Thornback Cowfish, <i>Lactoria fornasini</i>	Ostraciidae	A
1219	\$1.25	Leopard Moray Eel, <i>Enchelycore pardalis</i>	Muraenidae	A
1220	\$1.5	Black-blotched Porcupinefish, <i>Diodon liturosus</i>	Diodontidae	A
1221	\$1.75	Elegant Wrasse, <i>Anampses elegans</i>	Labridae	A
1222	\$2	Christmas Wrasse, <i>Thalassoma trilobatum</i>	Labridae	A
1223	\$2.75	Emperor Angelfish, <i>Pomacanthus imperator</i>	Pomacanthidae	A
1224	\$3.25	Semicircle Angelfish, <i>Pomacanthus semicirculatus</i>	Pomacanthidae	A
1225	\$5	Red-breasted Wrasse, <i>Cheilinus fasciatus</i>	Labridae	A
UNITED NATIONS (Geneva)		2012 June 1 (Rio + 20 Conference Type of 2012)		
553	1.40fr	U/I fish		U
UNITED NATIONS (Vienna)		2012 June 1 (Rio + 20 Conference Type of 2012)		
515	70c	U/I fish		U
VANUATU		2011 September 28 (Pele Island Beach)(Set of four)		
1015	160v	U/I fish		U



ENTOMOLOGY

Editor

Donald P. Wright, Jr., BU243

New Listings



Scott#	Denom	Common Name/Scientific Name	Family/Subfamily
ARUBA			
2013 January 16			
a	150c	Common Blue Bottle, <i>Graphium sarpedon</i> L.	PAP, Papilioninae
b	150c	Monarch, <i>Danaus plexippus</i> L.	NYM, Danainae
c	150c	Large Green-banded Blue, <i>Danis danis</i> Cramer	LYC, Polyommatae
d	150c	False Acraea, <i>Pseudacraea boisduvali</i> Doubleday	NYM, Limenitidinae
e	150c	Common Morpho, <i>Morpho helenor peleides</i> Kollar	NYM, Morphinae
f	150c	Protea Scarlet, <i>Capys alphaeus</i> Cramer	LYC, Theclinae
g	150c	Blue Pansy, <i>Junonia orithya</i> L.	NYM, Nymphalinae
h	150c	Palla Butterfly, <i>Palla ussheri</i> Butler	NYM, Charaxinae
i	150c	Purple Mort Bleu, <i>Eryphanis automedon</i> Cramer	NYM, Morphinae
j	150c	Cramer's Eighty-eight, <i>Diaethria clymena</i> Cramer	NYM, Biblidinae
k	150c	Orange Sulfur, <i>Colias eurytheme</i> Boisduval	PIE, Coliadinae
l	150c	Orange Tip, <i>Anthocharis cardamines</i> L.	PIE, Pierinae
BELARUS			
2012 (20 Years Belarus-Israel)			
	15000r	Sycophant, <i>Calosoma sycophanta</i> L. (LL margin)	CAR, Carabinae
BELGIUM			
2013, March 25			
	Domestic	Small Tortoiseshell, <i>Nymphalis urticae</i> L.	NYM, Nymphalinae
	Intl	Red Admiral, <i>Vanessa atalanta</i> L.	NYM, Nymphalinae
BOSNIA & HERZEGOVINA			
2013 March 15			
a	2.50m	GRASSHOPPER	
b	2.50m	CRICKET	
BOTSWANA			
2011 (Anti-Malaria)			
	2.60p	<i>Anopheles</i> sp.	CUL, Anophelinae
	4.10p	<i>Anopheles</i> sp.	CUL, Anophelinae
	5.50p	<i>Anopheles</i> sp.	CUL, Anophelinae
	6.10p	<i>Anopheles</i> sp.	CUL, Anophelinae
BURUNDI			
2012 December 21			
a	1180fr	Red-veined Dropwing, <i>Trithemis arteriosa</i> Burmeister	LIB, Trithemistinae
b	1190fr	Red-veined Dropwing, <i>Trithemis arteriosa</i> Burmeister	LIB, Trithemistinae
c	3000fr	Epaulet Skimmer, <i>Orthetrum chrysostigma</i> Burmeister	LIB, Libellulinae
d	3000fr	Common Marsh Bluetail, <i>Ischnura senegalensis</i> Rambur	COE, Ischnurinae
	7500fr	Scarlet Darter, <i>Crocothemis erythraea</i> Brulle	LIB, Sympetrinae
	Margin	<i>Trithemis</i> sp.	LIB, Trithemistinae

BURUNDI (continued)**2012 December 21**

a	1180fr	Christmas Butterfly, <i>Papilio demodocus</i> Esper	PAP, Papilioninae
b	1190fr	Western Red Glider, <i>Cymothoe mabillei</i> Overlaet	NYM, Limenitidinae
c	3000fr	Common Grass Yellow, <i>Eurema hecabe</i> L.	PIE, Coliadinae
d	3000fr	Janetta Themis Forester, <i>Euphaedra janetta</i> Butler	NYM, Limenitidinae
	7500fr	Large Fairy Hairstreak, <i>Hypolycaena antifaunus</i> Westwood	LYC, Theclinae
	Margin	Small Striped Swordtail, <i>Graphium polices</i> Cramer	PAP, Papilioninae
a	1180fr	Eastern Honeybee, <i>Apis cerana</i> Enderlein	API, Apinae
b	1190fr	German Wasp, <i>Paravespula germanica</i> L.	VES, Vespinae
c	3000fr	Western Honeybee, <i>Apis mellifera</i> L.	API, Apinae
d	3000fr	Oriental Hornet, <i>Vespa orientalis</i> L.	VES, Vespinae
	7500fr	Western Honeybee, <i>Apis mellifera</i> L.	API, Apinae
	Margin	Western Honeybee, <i>Apis mellifera</i> L.	API, Apinae

CHINA (Taiwan)**2012**

\$70	Birds printed on silk from SILKWORM, <i>Bombyx mori</i> L.	Bombycidae
------	--	------------

DJIBOUTI**2013**

a	350fr	Giant Charaxes, <i>Charaxes castor</i> Cramer	NYM, Charaxinae
b	350fr	Christmas Butterfly, <i>Papilio demodocus</i> Esper	PAP, Papilioninae
	Margin	UL: BUTTERFLY	NYM, Biblidinae
		UR: Clipper, <i>Parthenos sylvia</i> Cramer	NYM, Limenitidinae
a	350fr	<i>Charaxes zingha</i> Stoll	NYM, Charaxinae
b	350fr	Gaudy Commodore, <i>Precis octavia</i> Cramer	NYM, Nymphalinae
	Margin	UL: Blue Pansy, <i>Junonia orithya</i> L.	NYM, Nymphalinae
		UR: Tailed Comet Moth, <i>Argema mittrei</i> Guérin-Méneville	SAT, Saturniinae

GAMBIA**2012 December 31**

a	40d	Fiery Searcher, <i>Calosoma scrutator</i> Fabr.	CAR, Carabinae
b	40d	Blue Milkweed Beetle, <i>Chrysochus cobaltinus</i> LeConte	CHR, Eumolpinae
c	40d	Locust Borer, <i>Megacyllene robiniae</i> Forster	CER, Cerambycinae
d	40d	Grapevine Beetle, <i>Pelidnota punctata</i> L.	SCA, Rutelinae
	100d	Banded Alder Beetle, <i>Rosalia funebris</i> Motschulsky	CER, Cerambycinae

GREAT BRITAIN (Alderney)**2013 February 20**

459	39p	Rose Chafer, <i>Cetonia aurata</i> L.	SCA, Cetoniinae
460	52p	Burying Beetle, <i>Nicrophorus americanus</i> Olivier	SIL, Nicrophorinae
461	53p	Green Tiger Beetle, <i>Cicindela campestris</i> L.	CAR, Cicindelinae
462	59p	May Bug, <i>Melolontha melolontha</i> L.	SCA, Melolonthinae
463	69p	<i>Netocia moria</i> Fabr.	SCA, Cetoniinae
464	74p	an Oil Beetle, <i>Meloe</i> sp.	MEL, Meloinae
464a		Sheet of six (Sc#459–64)	

GREAT BRITAIN (Isle of Man)**2013 February 8** (Year of the Snake)

1548b	20p	Stylized BUTTERFLY, with fish, flowers & Chinese character	Lepidoptera
-------	-----	--	-------------

GRENADA**2013 January 3** (Each surrounded by other species)

a	\$3.50	" <i>Heliconius</i> mimicry," <i>Heliconius</i> sp.	NYM, Heliconiinae
b	\$3.50	Caribbean Buckeye, <i>Junonia evarete</i> Cramer	NYM, Nymphalinae
c	\$3.50	Red Passion Flower, <i>Heliconius erato petiverana</i> Dbldy. & Hew.	NYM, Heliconiinae
d	\$3.50	Gulf Fritillary, <i>Agraulis vanillae</i> L.	NYM, Heliconiinae
	\$9	White Peacock, <i>Anartia jatrophae</i> Johansson	NYM, Nymphalinae

GUYANA		2012 (Sc#1987 surch)	
4176	\$20 on \$5	Common Morpho, <i>Morpho deidamia</i> Hübner	NYM, Morphinae
HONG KONG		2012 November 22 (Sheets of six)	
1540	\$1.40	<i>Cosmoscarta bispecularis</i> White	Cercopidae, Cercopinae
1541	\$1.80	<i>Creobroter gemmatus</i> Stoll	HYM, Hymenopodinae
1542	\$2.40	Mangrove China-mark, <i>Eristena sp. nov.</i>	CRAM, Acentropinae
1543	\$2.50	White Dragontail, <i>Lamproptera curius</i> Fabr.	PAP, Papilioninae
1544	\$3	Four-spot Midget, <i>Mortonagrion hirosei</i> Asahina	COE, Agriocnemidinae
1545	\$5	<i>Pteroptyx maipo</i> Ballantyne	LAM, Luciolinae
1545a		Sheet of six (Sc#1540–45)	
JAPAN		2013 February 1 (Spring Greetings)	
d	50¥	Tulips, BUTTERFLY, humanized bears, & rabbit	Lepidoptera
		2013 March 1 (Greetings/Winnie the Pooh)	
a–j	10×50¥	Honey from <i>Apis mellifera</i> L.	API, Apinae
a–j	10×80¥	Honey from <i>Apis mellifera</i> L.	API, Apinae
KOREA (North)		2006 (Sc#4524 & 4538 surch)	
	3w on 20ch	Spangle Swallowtail, <i>Papilio protenor</i> Cramer	PAP, Papilioninae
	3w on 30ch	Stylized BUTTERFLY, with cat	Lepidoptera
LIECHTENSTEIN		2012 October 4 (Sc#1516 surch)	
1556	600rp	Orange Tip, <i>Anthocharis cardamines</i> L.	PIE, Pierinae
MALAWI		2012 January 25	
774a-d	105-115k	Like Sc#770–73, but with colored frames	
MALAYSIA		2012	
b	60s	Rajah Brooke's Birdwing, <i>Troides brookiana</i> Wallace	PAP, Papilioninae
MARSHALL ISLANDS		2012	
i	45c	Common Grass Yellow, <i>Eurema hecabe</i> L.	PIE, Coliadinae
MICRONESIA		2013 October 10 (Year of the Snake)	
a	18c	BUTTERFLY, calligraphy, fish, flower	Lepidoptera
MONTSERRAT		2013 March 3	
	10c	Pygmy Fritillary, <i>Anaea troglodyta minor</i> Hall	NYM, Charaxinae
	30c	Cloudless Sulfur, <i>Phoebis sennae</i> L.	PIE, Coliadinae
	35c	Gulf Fritillary, <i>Agraulis vanillae</i> L.	NYM, Heliconiinae
	50c	St. Christopher's Hairstreak, <i>Chlorostrymon simaethis</i> Drury	LYC, Theclinae
	70c	Violet-banded Skipper, <i>Nyctelius nyctelius</i> Latreille	HES, Hesperinae
	80c	Cassius Blue, <i>Leptotes cassius</i> Cramer	LYC, Polyommatainae
	90c	Antillean Crescent, <i>Antillea pelops</i> Drury	NYM, Nymphalinae
	\$1	Gold Rim, <i>Battus polydamas</i> L.	PAP, Papilioninae
	\$1.10	Warner's Flambeau, <i>Dryas iulia warneri</i> Hall	NYM, Heliconiinae
	\$1.50	Bronze Hairstreak, <i>Electrostrymon angerona</i> Godman & Salvin	LYC, Theclinae
	\$2.25	Caribbean Buckeye, <i>Junonia evarete</i> Cramer	NYM, Nymphalinae

MONTSERRAT (continued)**2013 March 3**

\$2.50	Red Rim, <i>Biblis hyperia</i> Cramer	NYM, Biblidinae
\$2.75	White Peacock, <i>Anartia jatrophae</i> Johansson	NYM, Nymphalinae
\$5	Lilac-banded Longtail, <i>Urbanus dorantes obscurus</i> Hewitson	HES, Pyrginae
\$10	Zebra Longwing, <i>Heliconius charithonia</i> L.	NYM, Heliconiinae
\$20	Manuel's Skipper, <i>Polygonus manueli</i> Bell & Comstock	HES, Pyrginae

MOROCCO**2012 December 24** (Sustainable Energy Year)

8.40d	Windmill, solar panels, tree, BUTTERFLIES, flowers	Lepidoptera
-------	--	-------------

MOZAMBIQUE**2011 January 25** (Stamperija) (Corrected data)

2169a–d	4×16m	Queen Alexandra's Birdwing, <i>Troides alexandrae</i> Rothschild	PAP, Papilioninae
2169e–f	2×66m	Queen Alexandra's Birdwing, <i>Troides alexandrae</i> Rothschild	PAP, Papilioninae
2170a–d	4×16m	Blue Morpho, <i>Morpho menelaus</i> L.	NYM, Morphinae
2170e–f	2×66m	Blue Morpho, <i>Morpho menelaus</i> L.	NYM, Morphinae
2187a	16m	Emperor Dragonfly, <i>Anax imperator</i> Leach	AES, Aeshninae
2187b	16m	Broad-bodied Chaser, <i>Libellula depressa</i> L.	LIB, Libellulinae
2187c	16m	Red-Veined Chaser, <i>Sympetrum fonscolombii</i> Selys	LIB, Sympetrinae
2187d	16m	Four-Spotted Chaser, <i>Libellula quadrimaculata</i> L.	LIB, Libellulinae
2187e	92m	Common Bluetail, <i>Ischnura heterosticta</i> Burmeister	COE, Ischnurinae
2187f	92m	Little Scarlett <i>Crocothemis sanguinolenta</i> Burmeister	LIB, Sympetrinae
2188a–d	4×16m	Monarch, <i>Danaus plexippus</i> L.	NYM, Danainae
2188e–f	2×92m	Monarch, <i>Danaus plexippus</i> L.	NYM, Danainae
2199	175m	<i>Troides alexandrae</i> Rothschild	PAP, Papilioninae
2200	175m	<i>Morpho menelaus</i> L. ♂	NYM, Morphinae
Margin		Top: Same ♂	
		Bottom: Same ♀	
2217	175m	Orange-Winged Droptail, <i>Trithemis kirbyi</i> Selys	LIB, Trithemistinae
Margin		Top & LL: Common Bluetail, <i>Ischnura heterosticta</i> Burmeister	COE, Ischnurinae
2218	175m	Monarch, <i>Danaus plexippus</i> L., plus 2 more in margin	NYM, Danainae

NETHERLANDS**2012 October 8** (Children's Book Week)

1426b	(€2.50)	Very stylized BUTTERFLY	Lepidoptera
-------	---------	-------------------------	-------------

NEVIS**2012 November 28**

1719a	\$2.50	King Cracker, <i>Hamadryas amphinome</i> L.	NYM, Biblidinae
1719b	\$2.50	Tropical Milkweed, <i>Lycorea halia atergatis</i> Doubleday	NYM, Danainae
1719c	\$2.50	Bahaman Daggerwing, <i>Marpesia eleuchea bahamensis</i> Munroe	NYM, Cyrestinae
1719d	\$2.50	Tailed Orange, <i>Eurema proterpia</i> Fabr.	PIE, Coliadinae
1719e	\$2.50	Same, no antennae	
1719f	\$2.50	<i>Pyrrhocalles antiqua</i> Herrich-Schaffer	HES, Hesperinae
1720a	\$2.50	<i>Lema biornata</i> Jacoby	CHR, Criocerinae
1720b	\$2.50	<i>Lema splendida</i> Allard	CHR, Criocerinae
1720c	\$2.50	<i>Oulema minuta</i> R. White	CHR, Criocerinae
1720d	\$2.50	<i>Neolema dorsalis</i> Olivier	CHR, Criocerinae
1721a	\$4	<i>Leptinotarsa heydeni</i> Stoll	CHR, Chrysomelinae
1721b	\$4	<i>Stilodes leoparda</i> Jacoby	CHR, Chrysomelinae

NIGER		2013 March 1 (Stamperija)		
1143a	750fr	Zebra White, <i>Pinacopteryx eriphia</i> Godart		PIE, Pierinae
1143b	750fr	Large Orange Tip, <i>Colotis antevippe</i> , Boisduval		PIE, Pierinae
1143c	750fr	Same ♂		PIE, Pierinae
1143d	750fr	Amethyst Blue, <i>Zizeeria knysna</i> Trimen		LYC, Polyommatainae
	Margin	UL: Hairstreak		LYC, Theclinae
		LL: Bush Scarlet, <i>Axiocerses amanga</i> Westwood		LYC, Theclinae
		UR: Bath White, <i>Pontia daplidice</i> L.		PIE, Pierinae
		LR: Purple Tip, <i>Colotis ione</i> Godart		PIE, Pierinae
1144a	750fr	African Migrant, <i>Catopsilia florella</i> Fabr.		PIE, Coliadinae
1144b	750fr	Striped Policeman, <i>Coeliades forestan</i> Stoll		HES, Coeliadinae
1144c	750fr	Wandering Donkey Acraea, <i>Acraea neobule</i> Doubleday		NYM, Heliconiinae
1144d	750fr	Mimic, <i>Hypolimnas misippus</i> L. ♂		NYM, Nymphalinae
	Margin	LL: Wandering Donkey Acraea, <i>Acraea neobule</i> Doubleday		NYM, Heliconiinae
		LR: Cupreus Hairtail, <i>Anthene princeps</i> Butler		LYC, Polyommatainae
1168	2500fr	Mountain Sandman, <i>Spialia spio</i> L.		HES, Pyrginae
	Margin	LL: White Lady, <i>Graphium angolanus</i> Goeze		PAP, Papilioninae
		LM: Christmas Butterfly, <i>Papilio demodocus</i> Esper		PAP, Papilioninae
		LR: Wandering Donkey Acraea, <i>Acraea neobule</i> Doubleday		NYM, Heliconiinae
		UR: Desert Orange Tip, <i>Colotis liagore</i> Klug ♂		PIE, Coliadinae
		MR: African Migrant, <i>Catopsilia florella</i> Fabr.		PIE, Coliadinae
1169	2500fr	PLAIN TIGER, <i>Danaus chrysippus</i> L.		NYM, Danainae
	Margin	UL: BUTTERFLY		LYC, Polyommatainae
		LL: BUTTERFLY		NYM, Satyrinae
		UR: Plain Tiger, <i>Danaus chrysippus</i> L.		NYM, Danainae
		MR: BUTTERFLY		NYM, Nymphalinae
		LR: Foxy Charaxes, <i>Charaxes jasius</i> L.		NYM, Charaxinae
NIUE		2013 April 10		
	\$1.20	Niue Blue, <i>Nacaduba niueensis</i> Lachlan		LYC, Polyommatainae
	\$1.40	Niue Blue, <i>Nacaduba niueensis</i> Lachlan		LYC, Polyommatainae
	\$1.70	Niue Blue, <i>Nacaduba niueensis</i> Lachlan		LYC, Polyommatainae
	\$2	Niue Blue, <i>Nacaduba niueensis</i> Lachlan		LYC, Polyommatainae
PALAU		2012 January 2		
1083	\$2.50	BUTTERFLY (with mangrove monitor)		Lepidoptera
PARAGUAY		2012 (New Data)		
b	16g	Common Morpho, <i>Morpho helenor peleides</i> Kollar		NYM, Morphinae
RUSSIA		2012 December 3 (Animated Films)		
7418a	10r	Western Honeybee, <i>Apis mellifera</i> L. (with Pooh & Piglet)		API, Apinae
ST VINCENT		2013 February 28		
a	\$3.50	<i>Doryphora undata</i> Degner		CHR, Chrysomelinae
b	\$3.50	<i>Leptinotarsa lacerata</i> Stoll		CHR, Chrysomelinae
c	\$3.50	<i>Chrysomela populi</i> L.		CHR, Chrysomelinae
d	\$3.50	Colorado Potato Beetle, <i>Leptinotarsa decemlineata</i> Say		CHR, Chrysomelinae
	\$9	<i>Leptinotarsa puncticollis</i> Jacoby		CHR, Chrysomelinae
ST VINCENT GRENADINES (Mustique)		2011 December 11 (New Data)		
b	\$3.50	<i>Nesonotus</i> sp.		TET, Pseudophyllinae

SOLOMON ISLANDS		2013 February 15 (Rotary/Matching Grant Projects)	
a	\$7	<i>Anopheles sp.</i> , with mosquito net & child	CUL, Anophelinae
SOUTH AFRICA		2013 March 20 (Intl Year of Water Cooperation)	
Intl small ltr		<i>Proischnura polychromatica</i> Barnard	COE, Ischnurinae
SURINAM		2013 January 16	
a	\$1	Large Striped Swordtail, <i>Graphium antheus</i> Cramer	PAP, Papilioninae
b	\$2	<i>Atrophaneura lucti</i> Roepke	PAP, Papilioninae
c	\$3	<i>Pandemos pasiphae</i> Cramer	Riodinidae
SWEDEN		2013 January 10	
a	12k	Cockchafer, <i>Melolontha melolontha</i> L.	SCA, Melolonthinae
b	12k	Harlequin or Black & Red Bug, <i>Lygaeus equestris</i> L.	LYG, Lygaeinae
c	12k	Baltic Hawker, <i>Aeshna serrata</i> Hagen	AES, Aeshninae
d	12k	Pink-winged Grasshopper, <i>Bryodemella tuberculata</i> Fabr.	ACR, Oedipodinae
SWITZERLAND		2013 March 7 (Children's Books Artwork)	
	1fr	Stylized GRASSHOPPERS in "Autumn Migration"	
	1fr	Marbled White, <i>Melanargia galathea</i> L. in "With the Pansies"	NYM, Satyrinae
TAJIKISTAN		2012 October 19	
a	1.60s	BUTTERFLY	
b	2.50s	BUTTERFLY	
c	3s	BUTTERFLY	
d	3s	BUTTERFLY	
a	1.60s	GRASSHOPPER	
b	2.50s	BUTTERFLY	
c	3s	BUTTERFLY	
d	3s	LADYBUG	
TUVALU		2012 September 5 (New Data)	
	\$3	Common Eastern Firefly, <i>Photinus pyralis</i> L.	LAM, Lampyrinae
Margin	LL:	Orange Blister Beetle, <i>Mylabris pustulata</i> Thunberg	MEL, Meloinae
	LR:	3ea Seven-spotted Ladybird, <i>Coccinella septempunctata</i> L.	COC, Coccinellinae
UKRAINE		2012 October 9 (My Lovely Ukraine)	
	2k	Sun, flowers, BUTTERFLY	Lepidoptera
ZIMBABWE		2012 November 20 (Ants and Termites)	
1155	5c	Honeydew Ant, with APHIDS	FOR, Myrmicinae Aphididae
1156	30c	<i>Phyllidris</i> sp.	FOR, Dolichoderinae
1157	30c	Leaf-cutter Ant, (<i>Atta</i> sp. or <i>Acromyrmex</i> sp.)	FOR, Myrmicinae
1158	75c	TERMITE Matabele Soldier Ant, <i>Dorylus</i> sp.	Termitidae FOR, Ecitoninae
1159	85c	<i>Camponotus</i> sp.	FOR, Formicinae
1160	\$1	TERMITE environment	Termitidae
1160a		Sheet of six (Sc#1155–60)	

Beyond the Catalog

The following issues were printed and sold by Stamperija Ltd., and are not listed in the Scott Catalogue:

CHAD		2012 November 5 (Four SS of one each) (Stamperija)	
	600fr	Scarlet Tip, <i>Colotis danae</i> Fabr.	PIE, Pierinae
Margin		UR: Tiger Blue, <i>Tarucus theophrastus</i> Fabr.	LYC, Polyommatainae
		LR: Scarlet Tip, <i>Colotis danae annae</i> Wallengren	PIE, Pierinae
	600fr	Plain Tiger, <i>Danaus chrysippus</i> L.	NYM, Danainae
Margin		mid: BUTTERFLY	Nymphalidae
		LR: <i>Acraea</i> sp.	NYM, Heliconiinae
	600fr	Golden Arab, <i>Colotis chrysonome</i> Klug	PIE, Pierinae
Margin		UR: Christmas Butterfly, <i>Papilio demodocus</i> Esper	PAP, Papilioninae
		Bottom: Christmas Butterfly, <i>Papilio demodocus</i> Esper, larva	PAP, Papilioninae
	600fr	African Migrant, <i>Catopsilia florella</i> Fabr.	PIE, Coliadinae
Margin		UR: BUTTERFLY	Lycaenidae
		LR: Caper White, <i>Belenois aurota</i> Fabr.	PIE, Pierinae
		2012 November 5 (Sheet of four) (Stamperija)	
a	600fr	Golden Arab, <i>Colotis chrysonome</i> Klug	PIE, Pierinae
b	600fr	Plain Tiger, <i>Danaus chrysippus</i> L.	NYM, Danainae
c	600fr	Scarlet Tip, <i>Colotis danae</i> Fabr.	PIE, Pierinae
d	600fr	African Migrant, <i>Catopsilia florella</i> Fabr.	PIE, Coliadinae
		Also found in all four corners of sheet	
		2012 November 5 (Collective sheet of four) (Stamperija)	
a–d	4×600fr	Same as sheet of four	
Margin		UR: Christmas Butterfly, <i>Papilio demodocus</i> Esper	PAP, Papilioninae
		MR: Small Verdant Hawkmoth, <i>Basiothea medea</i> Fabr.	SPH, Macroglossinae
GUINEA		2011 December 2 (Stamperija) (New Data)	
	5000-20000fr	Claudia's Beauty, <i>Euptoieta claudia</i> Cramer (LR margin)	NYM, Heliconiinae
GUINEA BISSAU		2012 September 10	
a	650fr	<i>Pseudochazara alpina</i> Staudinger	NYM, Satyrinae
		Plain Tiger, <i>Danaus chrysippus</i> L. (larva)	NYM, Danainae
b	650fr	<i>Zygaena tamara</i> Christoph	ZYG, Zygaeninae
		<i>Euploea eichorni</i> Staudinger (chrysalis & larva)	NYM, Danainae
c	650fr	White M Hairstreak, <i>Parrhasius m-album</i> Boisduval & LeConte	LYC, Theclinae
		Asian Swallowtail, <i>Papilio xuthus</i> L.	PAP, Papilioninae
d	650fr	Orange Oak Leaf, <i>Kallima inachus</i> Boisduval	NYM, Nymphalinae
		Caper White, <i>Belenois java teutonia</i> Fabr. (larva)	PIE, Pierinae
	2700fr	Monarch, <i>Danaus plexippus</i> L. (with larva)	NYM, Danainae
Margin		LL: Great Mormon, <i>Papilio memnon</i> L.	PAP, Papilioninae
		UR: Malay Lacewing, <i>Cethosia hypsea hypsina</i> C&R Felder	NYM, Heliconiinae
		LR: Eastern Festoon, <i>Allancastris cerisyi</i> Godart (larva)	PAP, Parnassiinae
NIGER		2013 March 1	
a	750fr	African Migrant, <i>Catopsilia florella</i> Fabr.	PIE, Coliadinae
b	750fr	Striped Policeman, <i>Coeliades forestan</i> Stoll	HES, Coeliadinae
c	750fr	Wandering Donkey <i>Acraea</i> , <i>Acraea neobule</i> Doubleday	NYM, Heliconiinae
		Also in LL margin	
d	750fr	Diadem, <i>Hypolimnas misippus</i> L. ♂	NYM, Nymphalinae
Margin		LR: BUTTERFLY	Lycaenidae

NIGER (continued)**2013 March 1**

2500fr	Mountain Sandman, <i>Spialia spio</i> L.	HES, Pyrginae
Margin	LL: White Lady Swallowtail, <i>Graphium angolanus</i> Goeze	PAP, Papilioninae
	LM: Christmas Butterfly, <i>Papilio demodocus</i> Esper	PAP, Papilioninae
	UR: Large Orange Tip, <i>Colotis antevippe</i> Boisduval ♂	PIE, Pierinae
	MR: African Migrant, <i>Catopsilia florella</i> Fabr.	PIE, Coliadinae
	LR: Wandering Donkey Acraea, <i>Acraea neobule</i> Doubleday	NYM, Heliconiinae

THE FRIGHTFUL HAIRY FLY**Donald P. Wright, Jr., BU243, ATA5009**

Kenya issued a set of 100 insect stamps in November 2011, in four sheets of 25 each with 25sh, 65sh, 75sh, and 95sh denominations. The stamps honor the International Centre of Insect Physiology and Ecology (ICIPE). The third stamp in the 65sh pane shows the Frightful Hairy Fly, *Mormotomyia hirsuta* Austen. This insect is the sole member of the Family Mormotomyiidae. There is disagreement as to whether this Family belongs in the Superfamily Hippoboscoidea or Ephydroidea. The Scott Catalogue has not yet assigned numbers to this set.

The fly is $\frac{3}{8}$ of an inch long with non-functional wings and terribly hairy legs such that it looks more like a spider than a fly. It was discovered in 1933, when two males were found and again in 1948, when many females, larvae, and puparia were also found. Since then, despite many expeditions, no one had seen another until in 2011, when several hundred flies were discovered, revealing that the males were about 50 percent larger than the females. This fly has been collected only from a crack in a 60-foot high rock in eastern Kenya. The crack is inhabited by bats and the fly larvae breed in the bat feces. Since it cannot fly and has no way of clinging onto any animal and thus cannot spread readily, it is thought that this may be the only colony of these flies found anywhere in the world.



**ANIMALS; DOGS & CATS; HORSES; INSECTS; BUGS
BUTTERFLIES; MALARIA; FLOWERS & PLANTS; ORCHIDS
MUSHROOMS; MARINE LIFE; FISH; TURTLES; REPTILES
SHELLS; WHALES & SEALS; BIRDS; MINERALS
MIXED BIOLOGY TOPICS**

Write for the price list of your choice

EASTERN SHORE STAMP COMPANY

P.O. BOX 241, SEAFORD, DE 19963

e-mail: essc@comcast.net Phone - Phone: (302) 629-2328



PALEONTOLOGY

Editor

Dr. Hans-Peter Schultze



I have not seen many new stamps with fossils this year, so that the following list contains additions to my earlier record of 2012. I have included stamps of Mozambique with recently extinct animals, which are not really fossils. Even I doubt that there will ever be a fossil record of the recently disappearing species.

Scott# Denom Common Name/Scientific Name Order: Family

FOSSIL MAMMALS

MOZAMBIQUE

2012 April 30 (*Animais da Europa extintos*)

Sheet of four stamps and SS (extinct animals of Europe)

2584a	66m	Woolly Rhinoceros, <i>Coelodonta antiqunitatis</i>	Perissodactyla: Rhinocerotidae
2584b	66m	Deinotherium, <i>Deinotherium giganteum</i>	Proboscidea: Deinotheriidae
2584c	66m	Wild Horse, <i>Equus ferus ferus</i>	Perissodactyla: Equidae
2584d	66m	European Hippopotamus, <i>Hippopotamus antiquus</i>	Artiodactyla: Hippopotamidae
2592	SS 175m	Cave Bear, <i>Ursus spelaeus</i>	Carnivora: Ursidae

2012 April 30 (*Animais da Africa extintos*)

Sheet of four stamps and SS (extinct animals of Africa)

2585a	66m	Bluebuck, <i>Hippotragus leucophaeus</i>	Artiodactyla: Bovidae
2585b	66m	Auroch, <i>Bos primigenius</i>	Artiodactyla: Bovidae
2585c	66m	Elephant, <i>Elephas recki</i>	Proboscidea: Elephantidae
2585d	66m	Red Gazelle, <i>Eudorcas rufina</i>	Artiodactyla: Bovidae
2593	SS 175m	Lion, <i>Panthera leo leo</i>	Carnivora: Felidae

2012 April 30 (*Murciélagos extintos*)

Sheet of four stamps and SS (extinct bats)

2586a	66m	Nendo Tube-nosed Fruit Bat, <i>Nyctimene sanctacrucis</i>	Chiroptera: Pteropodidae
2586b	66m	Guam Flying Fox, <i>Pteropus tokudae</i>	Chiroptera: Pteropodidae
2586c	66m	Large Palau Flying Fox, <i>Pteropus pilosus</i>	Chiroptera: Pteropodidae
2586d	66m	New Zealand Greater Short-tailed Bat, <i>Mystacina robusta</i>	Chiroptera: Mystacinidae
2594	SS 175m	Philippine Naked-backed Fruit Bat, <i>Dobsonia chapmani</i>	Chiroptera: Pteropodidae

2012 April 30 (*Criaturas marinos extintos*) (SS extinct marine life)

2599	SS 175m	Caribbean Monk Seal, <i>Monachus tropicalis</i>	Pinnipedia: Phocidae
------	---------	---	----------------------

2012 April 30 (*Animais das Américas extintos*)

Sheet of six stamps and SS (extinct animals of America)

2600a	16m	Macrauchenia, <i>Macrauchenia patagonica</i>	Litopterna: Macraucheniidae
2600c	16m	Columbian Mammoth, <i>Mammuthus columbi</i>	Proboscidea: Elephantidae
2600d	66m	Cuvieronius, <i>Cuvieronius hyodon</i>	Proboscidea: Gomphotheriidae
2600e	66m	Dire Wolf, <i>Canis dirus</i>	Carnivora: Canidae
2600f	66m	Beautiful Armadillo, <i>Dasypus bellus</i>	Cingulata: Dasypodidae
2614	SS 175m	Ancient Bison, <i>Bison antiquus</i>	Artiodactyla: Bovidae
	Margin	Saber-toothed Cat, <i>Smilodon</i>	Carnivora: Felidae

MOZAMBIQUE (continued) **2012 April 30** (*Animais extintos*)

Sheet of six stamps and SS (extinct animals)

2613a	16m	Falkland Islands Wolf, <i>Dusicyon australis</i>	Carnivora: Canidae
2613b	16m	Lesser Bilby, <i>Macrotis leucura</i>	Peramelemorphia: Thylacomyidae
2613c	16m	Quagga, <i>Equus quagga quagga</i>	Perissodactyla: Equidae
2613d	66m	Crescent Nail-tail Wallaby, <i>Onychogalea lunata</i>	Diprotodontia: Macropodidae
2613e	66m	Thylacine, <i>Thylacinus cynocephalus</i>	Dasyuromorphia: Thylacinidae
2627	SS 175m	Cave Lion, <i>Panthera leo spelaea</i>	Carnivora: Felidae

2012 April 30 (*Animais das Ásia extintos*)

Sheet of eight stamps and SS (extinct animals of Asia). Recently extinct, no real fossils.

2628a	16m	Bali Tiger, <i>Panthera tigris balica</i>	Carnivora: Felidae
2628b	16m	Formosan Clouded Leopard, <i>Neofelis nebulosa brachyura</i>	Carnivora: Felidae
2628c	16m	Arabian Gazelle, <i>Gazella arabica</i>	Artiodactyla: Bovidae
2628d	16m	Giant Tapir, <i>Megatapirus augustus</i>	Perissodactyla: Tapiridae
2628e	16m	Honshu Wolf, <i>Canis lupus hodophilax</i>	Carnivora: Canidae
2628f	16m	Schomburgk's Deer, <i>Cervus schomburgki</i>	Artiodactyla: Cervidae
2628g	92m	Sumatran Rhinoceros, <i>Dicerorhinus sumatrensis lasiotis</i>	Perissodactyla: Rhinocerotidae
2628h	92m	Caspian Tiger, <i>Panthera tigris virgata</i>	Carnivora: Felidae
2636	SS 175m	Javan Tiger, <i>Panthera tigris sondaica</i>	Carnivora: Felidae
	margin	Irish Elk, <i>Megaloceros giganteus</i>	Artiodactyla: Cervidae

2012 April 30 (*Animais das Oceanias extintos*)

Sheet of eight stamps and SS (extinct animals of Oceania)

2629a	16m	Bulldog Rat, <i>Rattus nativitatis</i>	Rodentia: Muridae
2629b	16m	Crescent Nail-tail Wallaby, <i>Onychogalea lunata</i>	Diprotodontia: Macropodidae
2629c	16m	Desert Rat-kangaroo, <i>Caloprymnus campestris</i>	Diprotodontia: Potoroidae
2629g	92m	Lesser Bilby, <i>Macrotis leucura</i>	Peramelemorphia: Thylacomyidae
2629h	92m	New Zealand Greater Short-tailed Bat, <i>Mystacina robusta</i>	Chiroptera: Mystacinidae
2637	SS 175m	Thylacine, <i>Thylacinus cynocephalus</i>	Dasyuromorphia: Thylacinidae

2012 April 30 (*Roederos extintos*)

Sheet of eight stamps and SS (extinct rodents)

2630a	16m	Gould's mouse, <i>Pseudomys gouldii</i>	Rodentia: Muridae
2630b	16m	Pemberton's Deer Mouse, <i>Peromyscus pembertoni</i>	Rodentia: Cricetidae
2630c	16m	<i>Oryzomys nelson</i>	Rodentia: Cricetidae
2630d	16m	Little Swan Island Hutia, <i>Geocapromys thoracatus</i>	Rodentia: Capromyidae
2630e	16m	Lesser Stick-nest Rat, <i>Leporillus apicalis</i>	Rodentia: Muridae
2630f	16m	Bavarian Pine Vole, <i>Microtus bavaricus</i>	Rodentia: Cricetidae
2630g	92m	Big-eared Hopping Mouse, <i>Notomys macrotis</i>	Rodentia: Muridae
2630h	92m	Santa Lucian Giant Rice Rat, <i>Megalomys luciae</i>	Rodentia: Cricetidae
2638	SS 175m	Short-tailed Hopping Mouse, <i>Notomys amplus</i>	Rodentia: Muridae
		Maclear's Rat, <i>Rattus macleari</i>	Rodentia: Muridae

FOSSIL INVERTEBRATES**MOZAMBIQUE****2012 April 30** (*Criaturas marinos extintos*)(Sheet of four stamps)

2591d	66m	<i>Belemnitida</i>	(class) Cephalopoda
-------	-----	--------------------	---------------------

FOSSIL BIRDS

COMORO ISLANDS

2009 January 7 (Paleontologists - Sheet of six stamps)

1043a 125fr *Archaeopteryx* (with Barnum Brown) (class) Aves: Archaeopterygidae

MOZAMBIQUE

2012 April 30 (*Pássaros extintos*)

Sheet of four stamps and a SS of extinct birds. Recently extinct, no real fossils.

2587a	66m	Brace's Emerald, <i>Chlorostilbon bracei</i>	Trochiliformes: Trochilidae
2587b	66m	White-winged Sandpiper, <i>Prosobonia leucoptera</i>	Charadriiformes: Scolopacidae
2587c	66m	Greater 'Amakihi, <i>Hemignathus sagittirostris</i>	Passeriformes: Fringillidae
2587d	66m	Bush Wren, <i>Xenicus longipes</i>	Passeriformes: Acanthisittidae
2595	SS 175m	Rodrigues Owl, <i>Mascarenotus murivorus</i>	Strigiformes: Strigidae
		Mysterious Starling, <i>Aplonis mavornata</i>	Passeriformes: Sturnidae
	Margin	Snail-eating Coua, <i>Coua delalandei</i>	Cuculiformes: Cuculidae
		Laughing Owl, <i>Sceloglaux albifacies</i>	Strigiformes: Strigidae
		Chatham Islands Rail, <i>Gallirallus modestus</i>	Gruiformes: Rallidae

2012 April 30 (*Pássaros africanos extintos*)

Sheet of four stamps and SS (extinct African parrots). Recently extinct, no real fossils.

2588a	66m	Newton's Parakeet, <i>Psittacula exsul</i>	Psittaciformes: Psittaculidae
2588b	66m	Mauritius Blue Pigeon, <i>Alectroenas nitidissima</i>	Columbiformes: Columbidae
2588c	66m	Dodo, <i>Raphus cucullatus</i>	Columbiformes: Columbidae
2588d	66m	Réunion Swamphen, <i>Porphyrio coerulescens</i>	Gruiformes: Rallidae
2596	SS 175m	Mascarene Parrot, <i>Mascarinus mascarinus</i>	Psittaciformes: Psittaculidae

2012 April 30 (*Papagaios extintos*)

Sheet of four stamps and SS (extinct parrots). Recently extinct, no real fossils.

2589a	66m	Seychelles Parakeet, <i>Psittacula wardi</i>	Psittaciformes: Psittacidae
		Raiatea Parakeet, <i>Cyanoramphus ulietanus</i>	Psittaciformes: Psittacidae
2589b	66m	Cuban Macaw, <i>Ara tricolor</i>	Psittaciformes: Psittacidae
		Newton's Parakeet, <i>Psittacula exsul</i>	Psittaciformes: Psittacidae
2589c	66m	Paradise Parakeet, <i>Psephotus pulcherrimus</i>	Psittaciformes: Psittacidae
2589d	66m	Mascarene Parrot, <i>Mascarinus mascarin</i>	Psittaciformes: Psittacidae
		Norfolk Island Kaka, <i>Nestor productus</i>	Psittaciformes: Strigopidae
2597	SS 175m	Black-fronted Parakeet, <i>Cyanoramphus zealandicus</i>	Psittaciformes: Psittacidae

2012 April 30 (*Pássaros extintos*)

Sheet of six stamps and a SS of extinct birds. Recently extinct, no real fossils.

2606a	16m	Choiseul Pigeon, <i>Microgoura meeki</i>	Columbiformes: Columbidae
2606b	16m	Himalayan Quail, <i>Ophrysia superciliosa</i>	Galliformes: Phasianidae
2606c	16m	Pallas's Cormorant, <i>Phalacrocorax perspicillatus</i>	Sulliformes: Phalacrocoracidae
2606d	16m	Red-moustached Fruit-Dove, <i>Ptilinopus mercierii</i>	Columbiformes: Columbidae
2606e	16m	Passenger Pigeon, <i>Ectopistes migratorius</i>	Columbiformes: Columbidae
2606f	16m	Passenger Pigeon, <i>Ectopistes migratorius</i>	Columbiformes: Columbidae
		Ryukyu Pigeon, <i>Columba jouyi</i>	Columbiformes: Columbidae
2620	SS 175m	Pink-headed Duck, <i>Rhodonessa caryophyllacea</i>	Anseriformes: Anatidae
	Margin	Auckland Islands Merganser, <i>Mergus australis</i>	Anseriformes: Anatidae

MOZAMBIQUE (continued) **2012 April 30** (*Animais extintos*)

Sheet of six stamps and a SS of extinct birds. Recently extinct, no real fossils.

2607a	16m	Hoopoe Starling, <i>Fregilupus varius</i>	Passeriformes: Sturnidae
2607b	16m	Guadeloupe Amazon, <i>Amazona violacea</i>	Psittaciformes: Psittacidae
2607c	16m	Kāma'o, <i>Myadestes myadestinus</i>	Passeriformes: Turdidae
2607d	66m	Spectacled Cormorant, <i>Phalacrocorax perspicillatus</i>	Sulliformes: Phalacrocoracidae
2607e	66m	Rodrigues Solitaire, <i>Pezophaps solitaria</i>	Columbiformes: Columbidae
2607f	66m	North Island Takahē, <i>Porphyrio mantelli</i>	Gruiformes: Rallidae
2627	SS 175m	Pitt Shag, <i>Phalacrocorax featherstoni</i>	Sulliformes: Phalacrocoracidae

2012 April 30 (*Animais extintos*)(Sheet of six stamps)

2613f	66m	Great Auk, <i>Pinguinus impennis</i>	Charadriiformes: Alcidae
-------	-----	--------------------------------------	--------------------------

2012 April 30 (*Animais das Américas extintos*)

2614	SS 175m	<i>Paraphysornis</i> (with ancient bison)	Cariamiformes: Phorusrhacidae
------	---------	---	-------------------------------

2012 April 30 (*Pássaros extintos*)

Sheet of eight stamps and a SS of extinct birds. Recently extinct, no real fossils.

2632a	16m	Slender-billed Grackle, <i>Quiscalus palustris</i>	Passeriformes: Icteridae
2632b	16m	Chatham Fernbird, <i>Bowdleria rufescens</i>	Passeriformes: Locustellidae
2632c	16m	Mauritius Blue Pigeon, <i>Alectroenas nitidissima</i>	Columbiformes: Columbidae
2632d	16m	Laysan Rail, <i>Porzana palmeri</i>	Gruiformes: Rallidae
2632e	16m	Bar-winged Rail, <i>Nesoclopeus poecilopterus</i>	Gruiformes: Rallidae
2632f	16m	Hawaiian Rail, <i>Pennula sandwichensis</i>	Gruiformes: Rallidae
2632g	92m	Hawai'i 'Ō'ō, <i>Moho nobilis</i>	Passeriformes: Mohoidae
2632h	92m	Wake Island Rail, <i>Gallirallus wakensis</i>	Gruiformes: Rallidae
2640	SS 175m	Greater Koa Finch, <i>Rhodacanthis palmeri</i>	Passeriformes: Fringillidae

2012 April 30 (*Pássaros extintos*)

Sheet of eight stamps and a SS of extinct birds. Recently extinct, no real fossils.

2633a	16m	Lesser Koa Finch, <i>Rhodacanthis flaviceps</i>	Passeriformes: Fringillidae
2633b	16m	Kosrae Starling, <i>Aplonis corvina</i>	Passeriformes: Sturnidae
2633c	16m	Bonin Grosbeak, <i>Chaunoproctus ferreorostris</i>	Passeriformes: Fringillidae
2633d	16m	Kioea, <i>Chaetoptila angustipluma</i>	Passeriformes: Mohoidae
2633e	16m	Reunion Starling, <i>Fregilupus varius</i>	Passeriformes: Sturnidae
2633f	16m	Kona Grosbeak, <i>Chloridops kona</i>	Passeriformes: Drepanididae
2633g	92m	'Ula-'ai-Hawane, <i>Ciridops anna</i>	Passeriformes: Drepanididae
2633h	92m	Bonin Thrush, <i>Zoothera terrestris</i>	Passeriformes: Turdidae
2641	SS 175m	Robust White-eye, <i>Zosterops strenuus</i>	Passeriformes: Zosteropidae

FOSSIL REPTILES**COMORO ISLANDS****2009 January 7** (Paleontologists)(Sheet of six stamps and SS)

1043b	150fr	<i>Gallimimus</i> with Thomas Condon	Saurischia: Ornithomimidae
1043c	225fr	<i>Irritator</i> with Robert Broom	Saurischia: Spinosauridae
1043d	300fr	<i>Dimorphodon</i> with William Buckland	Pterosauria: Dimorphodontidae
1043e	400fr	<i>Parasaurolophosaurus</i> with E. D. Cope	Ornithischia: Hadrosauridae
1043f	1000fr	<i>Allosaurus</i> with Edwin Colbert	Saurischia: Allosauridae
1044	SS 3000fr	fossil dinosaur egg with Roy Chapman Andrews	

COMORO ISLANDS (continued)			2009 March 2 (Prehistoric animals)(Sheet of six stamps and SS)
1097a	200fr	<i>Heterodontosaurus</i>	Ornithischia: Heterodontosauridae
1097b	250fr	<i>Malawisaurus</i>	Saurischia: Titanosauria
1097c	350fr	<i>Carnotaurus</i>	Saurischia: Abelisauridae
1097d	450fr	<i>Rhamphorhynchus</i>	Pterosauria: Rhamphorhynchidae
1097e	500fr	<i>Ouranosaurus</i>	Ornithischia: Hadrosauriformes
1097f	1000fr	<i>Herrerasaurus</i>	Saurischia: Herrerasauridae
1098	SS 3000fr	<i>Abriotosaurus</i>	Ornithischia: Heterodontosauridae

MOZAMBIQUE **2012 April 30** (*Répteis extintos*)

Sheet of four stamps and a SS of extinct reptiles

2590a	66m	<i>Desmotosuchus</i>	Aetosauria: Stagonolepididae
2590b	66m	<i>Scaphonyx</i>	Rhynchosauria: Hyperodapedontidae
2590c	66m	<i>Erythrosuchus</i>	Archosauriformes: Erythrosuchidae
2590d	66m	<i>Dimetrodon</i>	Sphenacodontia: Sphenacodontidae
2598	SS 175m	<i>Lystrosaurus</i>	Therapsida: Lystrosauridae
	Margin	<i>Dimetrodon</i>	Sphenacodontia: Sphenacodontidae
		<i>Eoraptor</i>	Saurischia: Eusaurischia

2012 April 30 (*Criaturas marinos extintos*)

Sheet of four stamps of extinct marine life

2591c	66m	<i>Henodus chelyops</i>	Placodontia: Henodontidae
-------	-----	-------------------------	---------------------------

2012 April 30 (*Animais das Américas extintos*)

2614	SS 175m	<i>Ameiva major</i> (with ancient bison)	Squamata: Teiidae
------	---------	--	-------------------

2012 April 30 (*Animais das Oceanias extintos*)

Sheet of eight stamps and SS (extinct animals of Oceania)

2629f	16m	<i>Hoplodactylus delcourti</i>	Squamata: Gekkonidae
-------	-----	--------------------------------	----------------------

TOGO

2012 October 11 (Charles Darwin)(pane of four stamps)

	750fr	<i>Pentaceratops</i>	Ornithischia: Ceratopsidae
	SS 2000fr	<i>Diabloceratops</i>	Ornithischia: Ceratopsidae

FOSSIL AMPHIBIANS

MOZAMBIQUE			2012 April 30 (<i>Criaturas marinos extintos</i>)(Sheet of four stamps)
2591a	66m	<i>Ichthyostega</i>	Ichthyostegalia: Ichthyostegidae

			2012 April 30 (<i>Animais das Américas extintos</i>)(Sheet of six stamps)
2600b	16m	Golden Toad, <i>Bufo periglenes</i>	Anura: Bufonidae

			2012 April 30 (<i>Animais das Oceanias extintos</i>)(Sheet of eight stamps)
2629e	16m	<i>Peltobatrachus pustulatus</i>	Temnospondyli: Peltobatrachidae

FOSSIL FISHES

MOZAMBIQUE			2012 April 30 (<i>Criaturas marinos extintos</i>)(Sheet of four stamps)
2591b	66m	<i>Bothriolepis</i>	Antiarchi: Bothriolepidae

			2012 April 30 (<i>Animais das Oceanias extintos</i>)(Sheet of eight stamps)
2629d	16m	New Zealand Grayling, <i>Prototroctes oxyrhynchus</i>	Osmeriformes: Retropinnidae

BIOLOGY REFERENCE WEB SITES

This section contains a listing of web links to on-line references relating to biology topics on stamps and general philatelic information. We are providing this information to assist members in research and not to endorse the sites listed in any way. If readers know of, or use other useful sites, please send the links to your editor and we will include them in future editions. New entries since the last publication are indicated with an asterisk (*).

STAMP ISSUES

Cyber Stamps. On-line postage stamp catalogue of worldwide topical issues.

<http://www.cyberstamps.com>

Delcampe. Worldwide listings and illustrations of stamps for sale.

<http://stamps.delcampe.net/page/category/cat,-1,language,E.html>

Neofila. Modern issues from Russia, Eastern Europe, and Baltic States.

<http://www.neofila.com/>

Stamperija. Listings and illustrations of thematic issues from countries located in Africa, Asia, and Oceania produced by Stamperija, Ltd., under contract to several postal administrations.

<http://www.stamperija.eu/index.php>

Stanley Gibbons. Searchable on-line stamp catalogue from Stanley Gibbons.

<http://www.allworldstamps.com/>

Zillions of Stamps. Worldwide listings and illustrations of stamps for sale.

<http://www.zillionsofstamps.com/>

GENERAL

***Fauna-Stamps.** Listings of stamps for sale (mainly new issues) on all sorts of biological themes including Cats, Dogs, Horses, Birds, Butterflies, Paleontology, Flora, and WWF animal stamps.

<http://www.fauna-stamps.com/>

Tree of Life Web Project. Worldwide collaborative effort to map the genome of every organism on earth and to establish their relationships to one another.

<http://www.tolweb.org/tree>

Zip Code Zoo. Links to taxonomic identification for all areas of biology.

<http://zipcodezoo.com/>

BOTANY

***Fungal Biodiversity Center.** Dutch site under the Royal Netherlands Academy of Science and Arts dealing with the taxonomy and evolution of fungi. Includes searchable taxonomic databases.

<http://www.cbs.knaw.nl/>

***International Association for Plant Taxonomy.** Links for the standard codes on taxonomy and nomenclature for algae, fungi, and plants.

<http://www.iapt-taxon.org/nomen/main.php>

ENTOMOLOGY:

Cercopoidea Organised On Line. Taxonomic database operated under the auspices of *Université Pierre-et-Marie-Curie* in Paris and dedicated to the insects Cercopoidea, which belong to the Hemiptera order.

<http://rameau.snv.jussieu.fr/cool/index.php>

FUNET. Finnish university share network site containing updated taxonomic listings for insects, especially Lepidoptera. It also has limited listings for mammals, birds, and plants.

<http://www.nic.funet.fi/pub/sci/bio/life/intro.html>

***International Odonata Research Institute.** Information about dragonflies and damselflies, including listings by geographical area, taxonomy, and links to related sites.

<http://www.iodonata.net/>

Natural History Museum. British site containing Lepidoptera generic names and type species listings.

<http://www.nhm.ac.uk/research-curation/research/projects/butmoth/>

HERPETOLOGY:

***AmphibiaWeb**. Provides access to information on amphibian declines, conservation, natural history, and taxonomy. Includes an on-line database of species and links to many related sites.

<http://amphibiaweb.org/index.html>

***The Reptile Database**. Uetz, P. (Ed.). Taxonomic database that provides basic information about all living reptile species, such as turtles, snakes, lizards, and crocodiles, as well as tuataras and amphisbaenians, but does not include dinosaurs.

<http://reptile-database.reptarium.cz/>

***Sea Turtle Postage Stamps of the World**. Shows over 1800 images of stamps, maxi cards, covers, and cinderellas that feature the sea turtle as the subject. Includes checklists by country, new issues, and links to many related sites.

<http://www.2xtreme.net/~nlinsley/>

***World-Wide List of Turtles and Tortoises on Stamps**. This on-line listing was produced by Donald N. Riemer, a former member of the Biology Unit and contributor to this journal, who passed away in June 2012. The site contains a checklist of stamps by country along with appendixes listing labels, cinderellas, turtle look-alike stamps, and post offices with “turtle” or “tortoise” in their name.

<http://www.personal.psu.edu/crr2/turtstmp/>

ICHTHYOLOGY

***FishBase**. A searchable database developed at the WorldFish Center in Taiwan in collaboration with the Food and Agriculture Organization of the United Nations. Contains all you ever wanted to know about fishes.

http://fishbase.sinica.edu.tw/home_tw.htm

MAMMALS

Feline Philately Homepage. All sorts of cat stamps, postmarks, and related articles.

<http://www.catstamps.org/>

ORNITHOLOGY

Birds of the World. All sorts of bird stamps by country and species, including new issues.

<http://www.bird-stamps.org/>

Birds on Stamps. Listings of local, unofficial, and cinderella issues featuring birds—last updated in 2007.

<http://www.birdstamp.com/>

Theme Birds on Stamps. All sorts of bird stamps by country and species, including new issues.

<http://www.birdtheme.org/>

PALEONTOLOGY:

***Paleophilatelie**. Catalogue of Paleontology related philatelic items, such as paleontologists, fossils, prehistoric animals, dinosaurs, early man, museums on official post stamps, envelopes, and post cards. Contains links to related news items and sites.

<http://www.paleophilatelie.eu/index.html>

EDITOR BIOGRAPHIES

This section continues our series of biographical information about our Associate Editors that we began in the previous edition. In the last issue, I was unable to include a photo of Associate Editor Donald P. Wright, Jr. with his biography for the simple reason that I did not have one. Happily that situation has been corrected and I include his smiling visage herewith.

The Associate Editors continue a long tradition in *Biophilately* of providing research data and expert commentary on both philatelic matters and biological topics. Many of them are also authors of some of the checklists and handbooks published by the ATA. In fact, Don Wright informs me that he has just completed Volume IV of *Insects on Stamps of the World* (2003–12) and is readying it for delivery to the ATA for publication.



Don Wright

Charles E. Braun

[*Editor's note: Chuck Braun first joined the Biology Unit in 1968, but dropped out after about a dozen years. He re-joined the unit in 1985 and since 2000, has been our regular contributor to the "New Birds in the Philatelic Aviary" column.*]

Chuck was born and raised in Buffalo, New York. He says he has lived a "Norman Rockwell" life. He received a degree in chemistry from the University of Buffalo. He spent his entire work career at the Savannah River Site nuclear reservation near Aiken, South Carolina. He built a house in the suburbs with a dog and a fenced in yard. He and his wife, Joyce, a stay-at-home mom, raised two children, a son and a daughter.

His main interest is birds. He is former President of the Aiken-Augusta Chapter of the National Audubon Society. He has birded in more than 60 countries and has seen almost two-thirds of all species. Thus, he collects birds on stamps (and coins). Besides collecting, he is an avid jazz fan and plays bridge and chess.



Chuck Braun

Hans-Peter Schultze

[*Editor's note: Dr. Hans-Peter Schultze has been the Associate Editor for Paleontology since 2007. He is a distinguished paleontologist who has worked and taught at prestigious institutions in the U.S. and Germany.*]

Hans-Peter Schultze was born on 13 August 1937, in Swinemünde, Germany (now Świnoujście, Poland). During World War II from 1940 until January 1945, he lived in Thorn, West Prussia (now Toruń, Poland). In February 1945, he and his family had to flee the fighting to live with his grandmother in Penzig, Silesia (now Pieńsk, Poland). A month later they continued their flight before the Russian Army to Berlin and then to Ermsleben at the Harz Mountains in central Germany where he lived in the Russian occupation zone until the fall of 1949.

His father, a medical doctor, was released from a camp in Denmark to the French occupation zone and in September 1949, Hans-Peter crossed the boundary between Russian and American occupation zones, continuing to Offenburg in the state of Baden, Germany in the French occupation zone to join him. He lived there until completing high school in March 1956.

In 1958, he received a *Vordiplom* (B.S.) in geology from the University of Freiburg. Between 1958 and 1959, he completed his mandatory German military service and in 1959, entered the University of Tübingen, Germany, where in 1962 he received a *Diplom* (M.S.) in geology and in 1965, a Ph.D. in paleontology.

Hans-Peter has worked as a research fellow with DFG (German Research Council) at the Riksmuseet in Stockholm, Sweden, and with DAAD (German Academic Exchange Service) at the Field Museum in Chicago and the American Museum of Natural History in New York City. He served as Assistant Professor at the Geol.-Paläontol. Institut of the University of Göttingen and Universitätsdozent (Associate Professor) at the University of Göttingen, before moving to the United States in 1978.



Hans-Peter Schultze

From 1978 until 1981, he was Assistant Curator for the Museum of Natural History and Assistant Professor for Systematics and Ecology at the University of Kansas. In 1981, he was promoted to Associate Curator and Associate Professor and in 1981, became Curator-in-charge of the Division of Vertebrate Paleontology for the Museum. In 1987, he was promoted again to become Curator of the Museum of Natural History and Professor of Systematics and Ecology. Between 1988 and 1990, he served as Chairman of the Department of Systematics and Ecology at the University of Kansas.

In July 1994, Hans-Peter moved to former East Berlin, Germany, to rebuild the Department of Paleontology at the Humboldt Universität. From 1994 until 2004, he was Director of the Institut für Paläontologie at the Museum für Naturkunde in Berlin and Professor of Biologie at Humboldt-Universität. In 2000, he was named Director of the Museum für Naturkunde in Berlin. He retired from the museum in 2004 and since then has been working again at the University of Kansas Natural History Museum.

Hans-Peter started collecting stamps in the 1950s while in high school. His father presented him with an album, »KA-BE« Briefmarken-Album Jugend-Ausgabe Nr. 3a Europa und Übersee of 1937, which he had received from a colleague, because his collection was lost during the war-time movements. He started to collect stamps from the whole world and placed them in stamp albums, but did not continue to place them in the old album. His interest shifted to stamps from Germany only. He received the »KA-BE« Album Deutschland starting in 1933 as a present and continued to buy additional sheets up to 1961. Then he had to give up collecting for monetary reasons and lack of time. He collected what he could get in stamps from his own correspondence and that of relatives, but could rarely find the time to deal seriously with his collection. His profession and family took all of his time.

In the 1980s, dinosaur stamps began appearing in large numbers. That ignited a new interest, the collecting of stamps with fossils. In Berlin, he found a colleague with the same interest, and the friend connected him with a stamp shop, where he bought his stamps with fossils. They went together to stamp shows; and jointly published an article on fossil stamps (Schultze, H.-P. & Hampe, O. 2001. *Fossile Knochenfische in der Philatelie*. – Fossilien, Heft 4: 240-247 [in German]).

Hans-Peter is a member of the American Philatelic Society and his local Lawrence Stamp Club. He gave a presentation on fossil stamps (“Stamps on Fossils and Dinosaurs”) in 2009 to the Lawrence Stamp Club.

New stamp issues with fossils are becoming less frequent, and he has the collection nearly completed, thus he has changed his interest towards stamps with endangered species. That field is not so easy to limit, as there is a fluid transition from protected to extinct by human influence.

In addition to his philatelic collecting interests, Hans-Peter also has a large collection of scientific books concentrated on publication of fossil fish.

His wife, Gloria Arratia, is also an ichthyologist/paleoichthyologist. She publishes scientific papers and has started with an Internet presentation of stamps with freshwater fishes. Their daughter, Gloria Sturm, also collects stamps (general) and is member of the Lawrence Stamp Club. Their teen-aged granddaughter, Kelli, has great interest in stamps and is active in the stamp club as vice-president.