

NEW BIRDS IN THE PHILATELIC AVIARY

Charles E. Braun, BU1364

New Birds



FEA'S PETREL, *Pterodroma feae* Procellariidae
Cape Verde, 2012 March, not yet cataloged, 20\$

Length: 13 to 15 inches, sexes alike, disperses. Dark, white below with a white superciliary and black mask.

Habitat: Marine and pelagic.

Range: Breeds in Cape Verde Islands, Desertas Islands (off Madeira), and possibly the Azores. Disperses to tropical and subtropical waters of the northern Atlantic.

Reference: del Hoyo, J., A. Elliott, and J. Sargatal, Eds. *Handbook of the Birds of the World, Volume 1*.



COLLARED PETREL, *Pterodroma brevipes* Procellariidae
Samoa, 2013 May 29, not yet cataloged, \$7.50

Length: 12 inches, sexes alike, resident. Dark above and grayish below with a black face and collar.

Habitat: Breeds in mountain forests and grasslands. Marine, but stays near breeding areas.

Range: Fiji, Cook Islands, Samoa; possibly Vanuatu and Solomon Islands.

Reference: del Hoyo, J., A. Elliott, and J. Sargatal, Eds. *Handbook of the Birds of the World, Volume 1*.



JERDON'S BAZA, *Aviceda jerdoni* Accipitridae
Guinea, 2013 April 30, not yet cataloged, 20000fr

Length: 16 to 19 inches, resident. The male (shown) is brownish above and barred rufous and white below with a dark crest and a rufous or gray head. The female is paler with a pale head.

Habitat: Tropical forest edges and clearings.

Range: Southwestern India and Sri Lanka, northeastern India to southern China, the Philippines, and Sulawesi.

Reference: del Hoyo, J., A. Elliott, and J. Sargatal, Eds. *Handbook of the Birds of the World, Volume 2*



RED-HEADED VULTURE, *Sarcogyps calvus* Accipitridae
Burundi, 2012 December 21, Yv#1795, 1190fr

Length: 30 to 36 inches, sexes alike, resident. Black with gray in the wings and a red head and legs.

Habitat: Open countryside, savanna woodland, and foothills.

Range: Eastern Pakistan to Vietnam and Thailand.

Reference: del Hoyo, J., A. Elliott, and J. Sargatal, Eds. *Handbook of the Birds of the World, Volume 2*.



BEAUDOUIN'S SNAKE-EAGLE, *Circus beaudouini* Accipitridae
Uganda, 2012 March 30, Yv#2333, 3400sh

Length: 24 inches, sexes alike, resident. Brown above and brown-barred white below with a dark chest.

Habitat: Open woodland and tree savanna.

Range: Senegal to northwestern Kenya.

Reference: del Hoyo, J., A. Elliott, and J. Sargatal, Eds. *Handbook of the Birds of the World, Volume 2.*



WAHLBERG'S EAGLE, *Hieraaetus wahlbergi* Accipitridae
Niger, 2013 March 1, Sc#1167, SS 2500fr (LR margin)

Length: 22 to 24 inches, resident migratory. All brown with brown eyes. A pale morph is light brown above and white below with a white head, neck, and thighs.

Habitat: Savanna.

Range: Breeds from Mauritania to Ethiopia. Winters to South Africa.

Reference: del Hoyo, J., A. Elliott, and J. Sargatal, Eds. *Handbook of the Birds of the World, Volume 2.*



LORD HOWE'S SWAMPHEN, *Porphyrio albus* Rallidae
Mozambique, 2012 April 30, Sc#2641, SS 175m (LR margin)

Length: 25 inches, sexes alike, resident. White with a red bill.

Habitat: Wetlands.

Range: Formerly Lord Howe Island; extinct around 1834.

Reference: Ripley, S. D. *Rails of the World.*



GREAT THICK-KNEE, *Esacus recurvirostris* Burhinidae
Palau, 2002 February 20, Sc#664, \$2 (This was not written up when issued.)

Length: 20 to 22 inches, sexes alike, resident. Grayish above and white below with a patterned face and tan breast.

Habitat: Riverbeds, stony banks, and mud around large lakes.

Range: Southeastern Iran to Sri Lanka, Hainan, and Vietnam.

Reference: del Hoyo, J., A. Elliott, and J. Sargatal, Eds. *Handbook of the Birds of the World, Volume 3.*



GRAY-HEADED LAPWING, *Vanellus cinereus* Charadriidae
Vietnam, 2013 June 1, not yet cataloged, 10500d

Length: 14 to 15 inches, sexes alike, migratory. Brown above and white below with a gray head, neck, and upper breast and a black breast band.

Habitat: Breeds in swamps; winters in wetlands.

Range: Breeds in northeastern China, neighboring Russia, and Japan. Winters from Nepal to Taiwan and Vietnam.

Reference: del Hoyo, J., A. Elliott, and J. Sargatal, Eds. *Handbook of the Birds of the World, Volume 3.*



LILAC-CROWNED PARROT, *Amazona finschi* Psittacidae
Canada, 2013 April 22, Sc#2636b, (63c)

Length: 12 to 14 inches, sexes alike, resident. Green, paler below with a red forecrown and lilac hindcrown and nape.

Habitat: Semi-deciduous woodland, pine-oak forest, and edges.

Range: Western Mexico. A feral population is in Los Angeles.

Reference: del Hoyo, J., A. Elliott, and J. Sargatal, Eds. *Handbook of the Birds of the World, Volume 4.*



RYUKYU SCOPS-OWL, *Otus elegans* Strigidae
Taiwan, 2013 June 26, not yet cataloged, \$25

Length: 8 inches, sexes alike, resident. Brown above and pale below with intricate black patterning.

Habitat: Subtropical dense evergreen forest.

Range: Ryukyu and Daito Islands (Japan), Lanyu Island (Taiwan), and small islands off the northern Philippines.

Reference: del Hoyo, J., A. Elliott, and J. Sargatal, Eds. *Handbook of the Birds of the World, Volume 5.*



BARRED EAGLE-OWL, *Bubo sumatranus* Strigidae
Thailand, 2013 July 29, not yet cataloged, 5b

Length: 16 to 18 inches, sexes alike, resident. Blackish-brown above and barred white below with dirty white facial disks and horizontal ear tufts.

Habitat: Forest, edges, and clearings.

Range: Southern Thailand to Bali and Borneo.

Reference: del Hoyo, J., A. Elliott, and J. Sargatal, Eds. *Handbook of the Birds of the World, Volume 5.*



TAWNY FISH-OWL, *Ketupa flavipes* Strigidae
Taiwan, 2013 June 26, not yet cataloged, \$10

Length: 19 to 22 inches, sexes alike, resident. Orange-rufous with black streaks below and horizontal ear tufts.

Habitat: Deep wooded ravines, stream banks, and forest pools.

Range: Northwestern India to Vietnam and Taiwan.

Reference: del Hoyo, J., A. Elliott, and J. Sargatal, Eds. *Handbook of the Birds of the World, Volume 5*.



GRAY-TAILED MOUNTAIN-GEM, *Lampornis cinereicauda*
Trochilidae

Guinea-Bissau, 2012 May 25, Yv#4338, 750fr

Length: 4 inches, resident. The male (shown) is green with a white throat and superciliary and a gray tail. The female is cinnamon-rufous below with a green tail.

Habitat: Highland forest canopy.

Range: Southern Costa Rica.

Reference: del Hoyo, J., A. Elliott, and J. Sargatal, Eds. *Handbook of the Birds of the World, Volume 5*.



PURPLE-THROATED MOUNTAIN-GEM, *Lampornis calolaemus*
Trochilidae

Guinea-Bissau, 2012 May 25, Yv#4340, 750fr

Length: 4 inches, resident. The male (shown) is green with a white superciliary and purple throat; the female is cinnamon-rufous below.

Habitat: Wet subtropical forest.

Range: Southern Nicaragua to western Panama.

Reference: del Hoyo, J., A. Elliott, and J. Sargatal, Eds. *Handbook of the Birds of the World, Volume 5*.



FAWN-BREASTED BRILLIANT, *Heliodoxa rubinoides* Trochilidae
Guinea-Bissau, 2012 May 25, Yv#777, SS 3500fr

Length: 5 inches, resident. The male (shown) is bronzy-green above and cinnamon-buff below with a small rosy-violet throat patch. The female lacks the throat patch.

Habitat: Wet and humid pre-montane forest and forest edges.

Range: Andes from central Colombia to Peru.

Reference: del Hoyo, J., A. Elliott, and J. Sargatal, Eds. *Handbook of the Birds of the World, Volume 5*.



TYRIAN METALTAIL, *Metallura tyrianthina* Trochilidae
Guinea-Bissau, 2012 May 25, Yv#4339, 750fr

Length: 4 inches, resident. The male is bottle-green above and grayish below with an emerald-green throat patch and a coppery-red or violet tail. The female has whitish underparts with green spots, an ochre-orange throat, and coppery-red tail.

Habitat: Open humid forest.

Range: Andes from Venezuela to Bolivia.

Reference: del Hoyo, J., A. Elliott, and J. Sargatal, Eds. *Handbook of the Birds of the World, Volume 5.*



SCALED METALTAIL, *Metallura aeneocauda* Trochilidae
Guinea-Bissau, 2012 May 25, Yv#777. SS 3500fr (UR margin)

Length: 5 inches, sexes similar, resident. Bottle-green above and scaly grayish below with an iridescent bright green throat patch and a copper red tail.

Habitat: Bushy areas in cloud forest.

Range: Southeastern Peru to central Bolivia.

Reference: del Hoyo, J., A. Elliott, and J. Sargatal, Eds. *Handbook of the Birds of the World, Volume 5.*



WHITE-HEADED MOUSEBIRD, *Colius leucocephalus* Coliidae
Tanzania, 2011 November 20, Sc#2639, SS 3800sh

Length: 24 to 28 inches, sexes alike, resident. Gray above and buff below with a white head and black streaking on the upper back and throat.

Habitat: Dry thorn bush.

Range: Southeastern Ethiopia to northeastern Tanzania.

Reference: del Hoyo, J., A. Elliott, and J. Sargatal, Eds. *Handbook of the Birds of the World, Volume 6.*



WHITE-THIGHED HORNBILL, *Ceratogymna albotibialis* Bucerotidae
Congo D.R., 2012 October 22, not yet cataloged, 600fr

Length: 18 inches, sexes similar, but the female is smaller with a darker casque, resident. Black with white lower back, tail tip, and thighs.

Habitat: Tall lowland evergreen forest.

Range: Benin to western Uganda and northern Angola.

Reference: del Hoyo, J., A. Elliott, and J. Sargatal, Eds. *Handbook of the Birds of the World, Volume 6.*



SAMOAN TRILLER, *Lalage sharpei* Campephagidae
Samoa, 2013 May 29, not yet cataloged, \$3.90

Length: 5 inches, sexes alike, resident. Gray-brown above and finely-barred paler below with a red-orange bill.

Habitat: Native forest and forest edges.

Range: Western Samoa.

Reference: Pratt, H. D., P. L. Bruner, and D. G. Berrett. *The Birds of Hawaii and the Tropical Pacific*.



PARADISE RIFLEBIRD, *Ptiloris paradiseus* Paradisaeidae
Solomon Islands, 2013 February 15, not yet cataloged, \$5

Length: 12 inches, resident. The male (left) is velvety jet black with iridescent sheens of green and purple/magenta. The female (right) is brown above and white below marked with chevrons.

Habitat: Subtropical and temperate rainforest.

Range: Coastal eastern Australia (not found in the Solomon Islands).

Reference: del Hoyo, J., A. Elliott, and J. Sargatal, Eds. *Handbook of the Birds of the World, Volume 14*.



BARLOW'S LARK, *Certhilauda barlowi* Alaudidae
Namibia, 2013 March 1, Sc#1255, \$1

Length: 7 inches, sexes alike, but male has a longer bill, resident. Sandy or sandy-gray above and brown-spotted white below with a whitish supercilium and eye ring.

Habitat: Sandy plains with dwarf shrub lands and grassy dunes.

Range: Coastal Namibia.

Reference: del Hoyo, J., A. Elliott, and J. Sargatal, Eds. *Handbook of the Birds of the World, Volume 9*.



BENGUELA LARK, *Certhilauda benguelensis* Alaudidae
Namibia, 2013 March 1, Sc#1254, 90c

Length: 7 to 8 inches, sexes alike, resident. Gray-brown above and whitish below with dark brown spots on the breast and a narrow white supercilium.

Habitat: Arid stony hill slopes and adjacent plains.

Range: Southwestern Angola and western Namibia.

Reference: del Hoyo, J., A. Elliott, and J. Sargatal, Eds. *Handbook of the Birds of the World, Volume 9*.



KĀMA‘O, *Myadestes myadestinus* Turdididae
Mozambique, 2012 April 30, Sc#2607c, 16m

Length: 8 inches, sexes alike, resident. Brown above and faintly mottled gray below.
Habitat: Dense montane forest.

Range: Kauai, Hawaii.

Reference: Pratt, H. D., P. L. Bruner, and D. G. Berrett. *The Birds of Hawaii and the Tropical Pacific*.



BISHOP'S 'Ō'Ō, *Moho bishopi* Meliphagidae
Mozambique, 2012 April 30, Sc#2641, SS 175m (UR margin)

Length: 12 inches, sexes alike, resident. Black with yellow ear and axillary tufts and yellow undertail.

Habitat: Dense rainforest.

Range: Formerly Molokai, Hawaii. Extinct in 1981.

Reference: Pratt, H. D., P. L. Bruner, and D. G. Berrett. *The Birds of Hawaii and the Tropical Pacific*.



MAO, *Gymnomyza samoensis* Meliphagidae
Samoa, 2013 May 29, not yet cataloged, \$15

Length: 12 inches, sexes alike, resident. All dark olive.

Habitat: Montane forest.

Range: Samoa.

Reference: Pratt, H. D., P. L. Bruner, and D. G. Berrett. *The Birds of Hawaii and the Tropical Pacific*.



GREATER AKIALOA, *Hemignathus ellisianus* Drepanididae
Mozambique, 2012 April 30, Sc#2621, SS 175m (LR margin)

Length: 7.5 inches, sexes alike, resident. Green above, paler below with along curved bill.
Habitat: Forest.

Range: Formerly Oahu. Extinct in 1969.

Reference: Pratt, H. D., P. L. Bruner, and D. G. Berrett. *The Birds of Hawaii and the Tropical Pacific*.



LESSER AKIALOA, *Hemignathus obscura* Drepanididae
Mozambique, 2012 April 30, Sc#2621, SS 175m (LL margin)

Length: 6.5 inches, sexes alike, resident. Green above, paler below with a curved bill.

Habitat: Forest.

Range; Formerly Lanai and Molokai (Hawaii). Extinct in 1940.

Reference: Pratt, H. D., P. L. Bruner, and D. G. Berrett. *The Birds of Hawaii and the Tropical Pacific*.



KĀKĀWAHIE, *Paroreomyza flammea* Drepanididae
Guinea-Bissau, 2012 October 31, Yv#4634, 900fr

Length: 5 inches, resident. The male (lower) is bright scarlet; the female (upper) is rusty brown above and buffy white below with an orange throat.

Habitat: Forest and undergrowth.

Range: Formerly Molokai, Hawaii. Extinct in 1963.

Reference: Pratt, H. D., P. L. Bruner, and D. G. Berrett. *The Birds of Hawaii and the Tropical Pacific*.



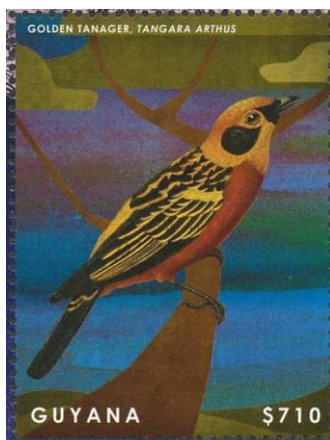
BACHMANN'S WARBLER, *Vermivora bachmanii* Parulidae
Guinea-Bissau, 2012 October 31, Yv#4636, 900fr

Length: 5 inches, migratory. The male (upper) is olive above and yellow below with a black crown and throat patch. The female (lower) is olive above and yellow below.

Habitat: Bred in swampy seasonally flooded forest. Wintered in wooded areas.

Range: Formerly bred in the southeastern U.S. and wintered in Cuba and the Bahamas. Extinct in 1988.

Reference: Curson, J., D. Quinn, and D Beadle. *Warblers of the Americas*.



GOLDEN TANAGER, *Tangara arthus* Thraupidae

Guyana, 2013, not yet cataloged, \$710

(previously on an Equatorial Guinea issue and margin of a 1998 Tanzania issue)

Length: 5 inches, sexes similar, resident. Golden with a greenish-yellow-streaked black back and a black patch below the eye.

Habitat: Humid and wet montane forest edges and clearings.

Range: Western Venezuela to Bolivia.

Reference: del Hoyo, J., A. Elliott, and J. Sargatal, Eds. *Handbook of the Birds of the World, Volume 16*.



BLACK-BACKED TANAGER, *Tangara peruviana* Thraupidae
Guyana, 2013, not yet cataloged, \$225

Length: 5.5 inches, migratory. The male (shown) is pale above and bluish below with a black back, rufous-chestnut head and blue and black wings. The female is greenish above and blue-green below with a cinnamon-rufous head.

Habitat: Coastal sandy-soil forest and scrub.

Range: Breeds in Espirito Santo and Rio de Janeiro provinces. Winters slightly north.

Reference: del Hoyo, J., A. Elliott, and J. Sargatal, Eds. *Handbook of the Birds of the World, Volume 16.*



BONIN GROSBEAK, *Chaunoproctus ferreorostris* Fringillidae
Mozambique, 2012 April 30, Sc#2633c, 16m

Length: 8 inches, resident. The male is brown above and whitish below with a red face and breast. The female (shown) is brown.

Habitat: Low shrubs.

Range: Formerly Ogashawara (Bonin) Island, south of Japan. Extinct in 1828.

Reference: Day, D. *Vanished Species.*